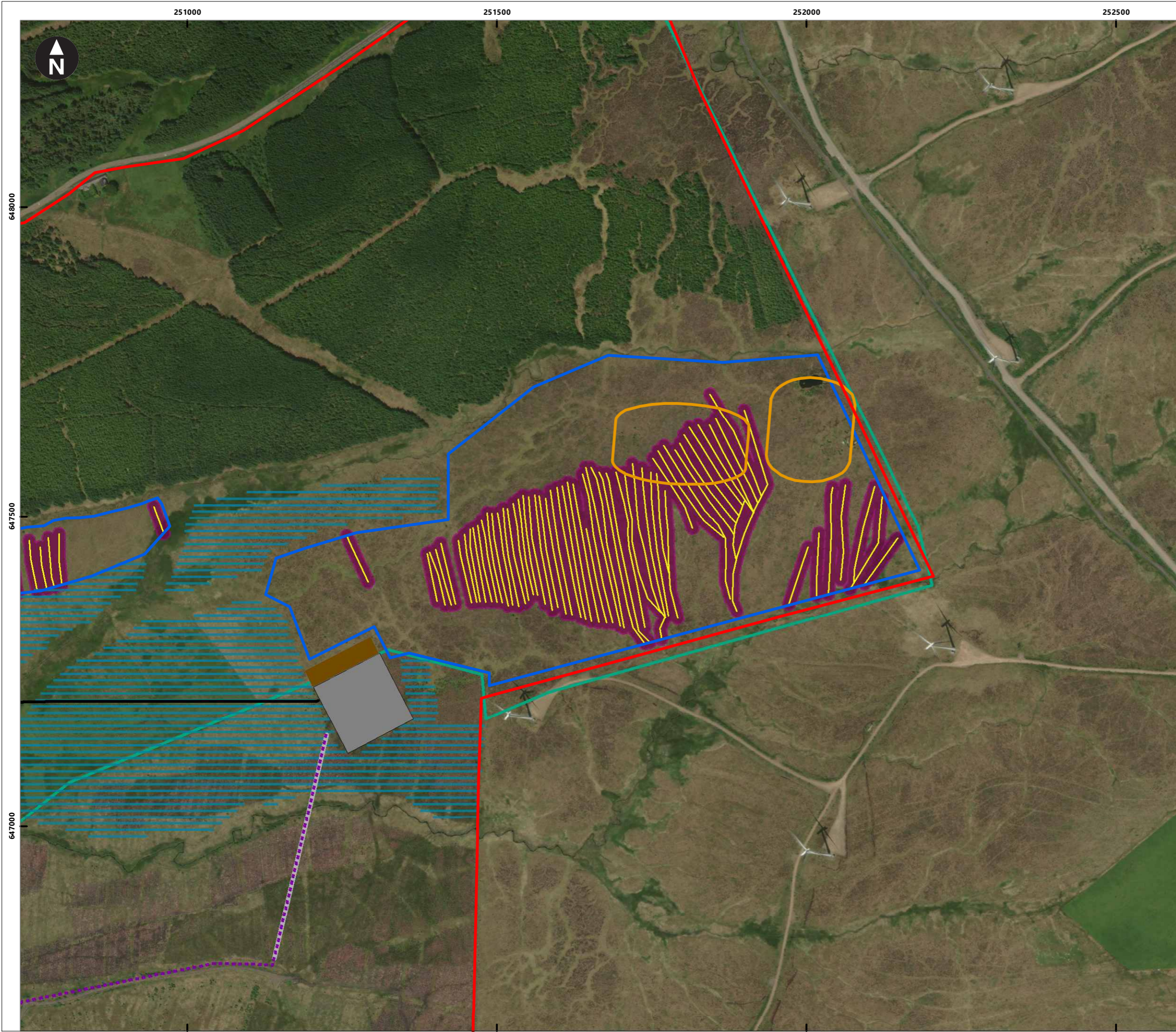


N:\Projects\SUB_43122_Whitelees Solar PV and Hydrogen\Drawings\GIS\MXD\43122-WOOD-XX-XX-FG-OE-0027_S0_P01.3.mxd Originator: benjamin.barnard



- Key
- Extent of Project Landholding
 - Proposed Habitat Management Units
 - Habitat Management Plan
 - New cable
 - Link/haul road (S36)
 - Proposed access track
 - PV Layout
 - Proposed Removal of Coniferous Regeneration
 - Electrolyser Laydown Area (Full PP)
 - Green Hydrogen Production Facility (Full PP)
 - Historic Ditches
 - 10m ditch restoration

0 100 200 300 m
 Scale at A3: 1:6,000
 © Crown Copyright. All rights reserved. Licence number AL100001776.



Whitelees Windfarm Extension Solar PV, Green Hydrogen Production and Battery Storage Facilities
 Ecological Impact Assessment
 EclA

Figure 6.5 Management Unit B