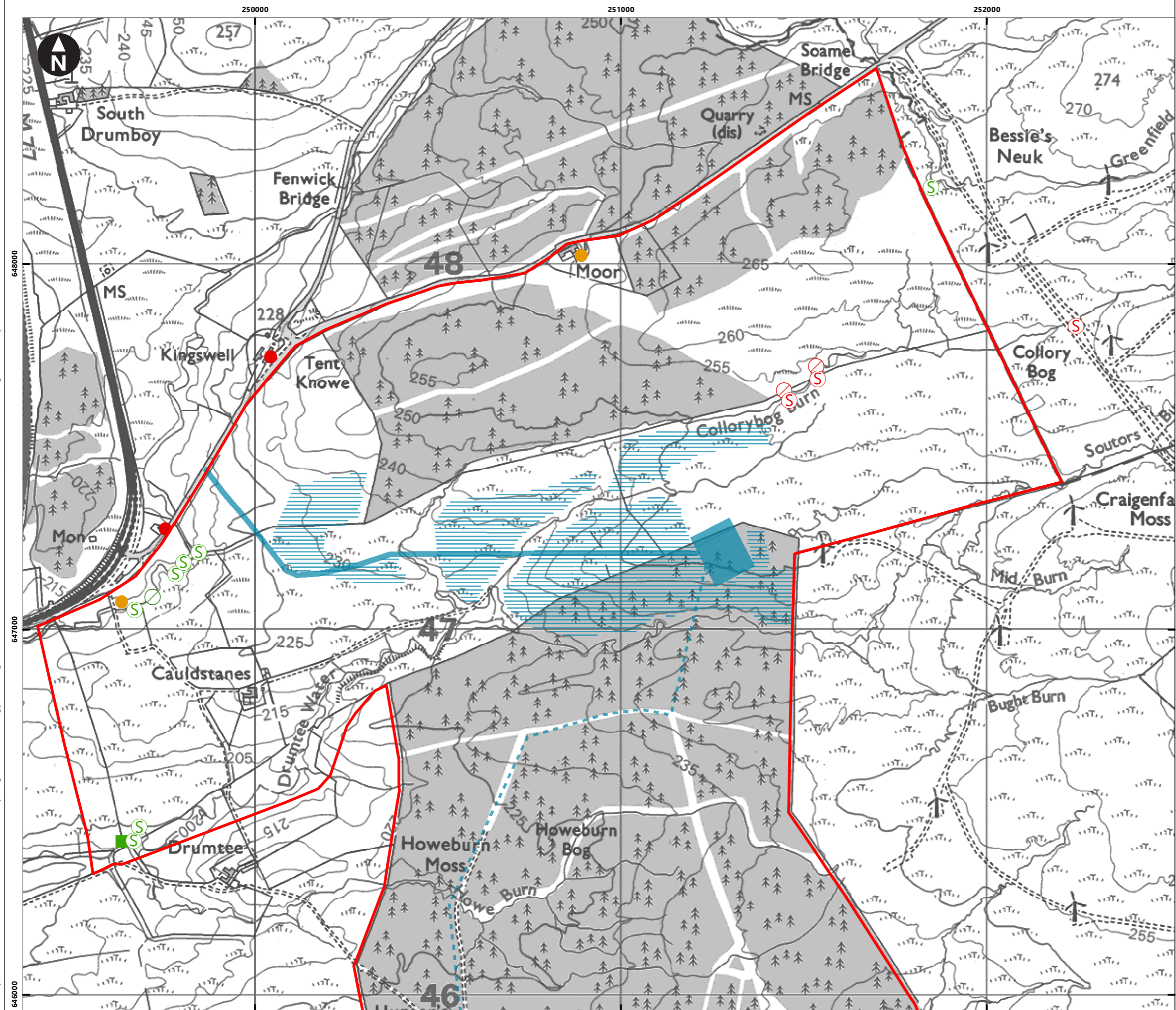


N:\Projects\SUB_43122_Whitelees Solar PV and Hydrogen\Drawings\GIS\MXD\43122-WOOD-XX-XX-FG-OE-0023_S0_P01.1.mxd Originator: benjamin.barnard



- Key
- Site Boundary
 - Proposed Development
 - Bat, Potential Roost - Building 2a
 - Bat, Potential Roost - Building 2b
 - Otter, Holt, 2010
 - Otter, Run, 2010
 - Otter, Run, 2012
 - ⊗ Otter, Spraint, 2010
 - ⊗ Otter, Spraint, 2012

CONFIDENTIAL

0 200 400 600 m
Scale at A3: 1:10,000
© Crown Copyright. All rights reserved. Licence number AL100001776.



Whitelee Windfarm Extension Solar PV, Green Hydrogen Production and Battery Storage Facilities
Ecological Impact Assessment
Appendix A – Ecological Desk Study

Figure 3A6.3a Protected species data (2011/12) - Whitelee Extension Phase 3

March 2021