





## FOREWORD

I am proud of our relationship with Dumfries and Galloway. Through positive engagement with stakeholders, communities and local suppliers, we have been investing in the region for over fifteen years and will continue to develop strong relationships to help shape and inform our future plans whilst delivering a lasting legacy for generations to come.

We recognise the importance of empowering local communities by putting decision making in the hands of the communities within Dumfries and Galloway and we are committed to being a good neighbour to the communities in which we work.

To date we have committed over £7m to community benefit funds within Dumfries and Galloway with Kilgallioch Community Benefit Fund receiving over £3.4m and we have been delighted to see our community benefit funds being used by local communities to deliver projects and support such as the creation of a multi-use community facility, the installation of a new children's playpark by New Luce Community Council and the Euan's Playspace Trust enhanced play space in Portpatrick. There has also been environmental work such as the upgrading and improved accessibility of the coastal paths around Kirkcolm and Cairnryan.

Through our existing renewable energy projects within the region at Kilgallioch, Wether Hill, Harestanes and Ewe Hill windfarms we have spent over £5m directly with local suppliers, helping create and sustain employment opportunities with local companies. We are confident that one of the best ways to support a

sustainable economic recovery is investment in renewable energy. Investment in cleaner power from onshore wind (which is proven to be the lowest cost form of generation able to deliver rapid decarbonisation), cleaner transport and cleaner home heating delivers jobs, kickstarts the economy and tackles climate change all at the same time.

We've seen climate change move to the mainstream of political debate amid a groundswell of public support to make faster progress in cleaning up the environment and decarbonising the economy - a win for the environment in terms of getting closer to our Net Zero targets.

That support and those voices for a greener future will only continue to grow as we start to come out of the current pandemic. Our Dumfries and Galloway projects have the potential to deliver an additional 253MW of clean renewable electricity, an additional 31MW of energy storage and a positive step towards Net Zero.

I am delighted to be bringing Kilgallioch Extension, Harestanes South Extension and Eucharhead windfarms to the region as part of our investment and growth plan. It will have an important and positive part to play in delivering a better future, quicker for everyone.

**Lindsay McQuade,**  
CEO, ScottishPower Renewables



# KILGALLIOCH WINDFARM EXTENSION

With the successful operation of Kilgallioch Windfarm, SPR has submitted a consent application to the Scottish Government, adding generating capacity to the existing 239MW at the windfarm whilst maximising the use of the existing infrastructure and grid connections from the operational windfarm.



Add around 82MW of clean green electricity - 11 wind turbines and solar panels

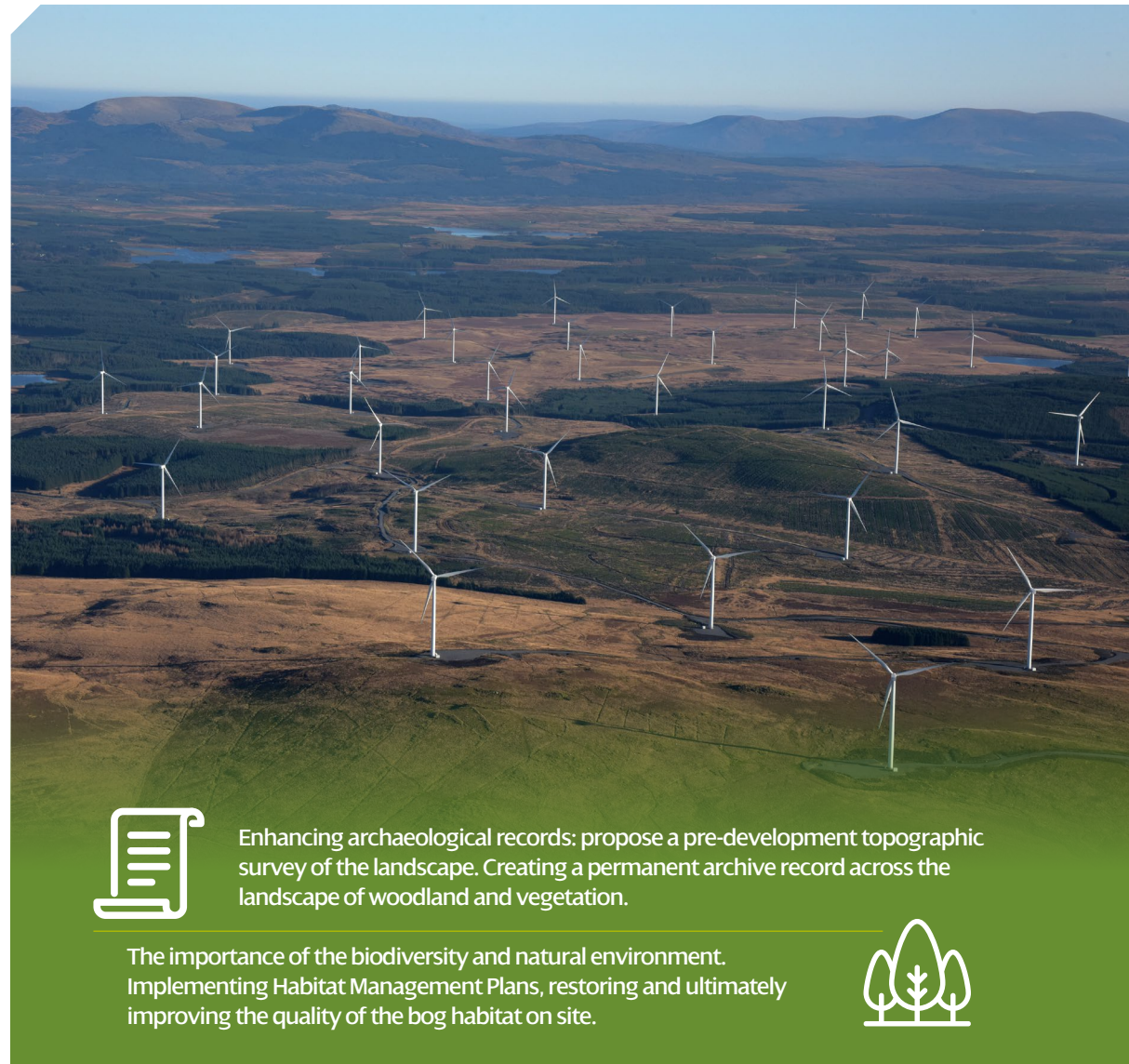


Generating enough electricity to power over 44,000 average UK households

We recognise the importance of the biodiversity and natural environment within Dumfries and Galloway. A Habitat Management Plan similar to those in our case studies on page 6 would also be implemented, restoring and ultimately improving the quality of the bog habitat on site.

The Dumfries and Galloway Council Local Development Plan 2 has an overarching principle that "all development proposals should support sustainable development, including the reduction of carbon and other greenhouse gas emissions." We take great pride in ensuring our proposals deliver this.

Kilgallioch Windfarm Extension is a well-designed project in an appropriate location and can play a key role in Dumfries and Galloway's post-COVID green recovery, assisting in reaching the renewable energy deployment needed to meet Scotland's Net Zero targets and contributing to the valuable community and socio-economic benefits highlighted throughout the brochure.



Enhancing archaeological records: propose a pre-development topographic survey of the landscape. Creating a permanent archive record across the landscape of woodland and vegetation.

The importance of the biodiversity and natural environment. Implementing Habitat Management Plans, restoring and ultimately improving the quality of the bog habitat on site.







**Commitment to circular economy:** Proposals include bike shelters from recycled turbine blades.

## HARESTANES SOUTH WINDFARM EXTENSION

We are currently preparing a consent application for an extension to our operational Harestanes Windfarm to add 8 turbines and increase our generating capacity by around 45MW from 136MW to 181MW. The scheme would utilise existing Harestanes Windfarm access, grid connection and other associated windfarm infrastructure minimising any environmental impact during the extension.



The existing Harestanes Windfarm contributes around £300,000 per year in community benefit and is administered by the Annandale & Nithsdale Community Benefit Company (ANCBC). 42 Community Councils have access to this fund for local initiatives.

Other potential unique local improvements could be:

- Installation of 2 EV charging points at the 7stanes recreational facility
- 10 E-bikes to be provided for use on the 7stanes recreational facility
- Info boards and bike shelter with maintenance tools at 7stanes recreational facility
- £10k annual funding to support seasonal ranger staff on the Romans and Reivers walking route



Images: Port of Aalborg



# EUCHANHEAD RENEWABLE ENERGY DEVELOPMENT

We've submitted a consent application for:



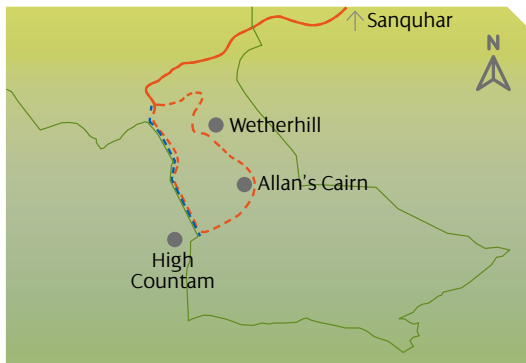
21 turbines equating to an installed generating capacity of 126MW



31MW of Battery Energy Storage Systems (BESS) providing grid support and stability to the electrical supply network helping create a more resilient local network.

The proposed Development would improve access and signage to Allan's Cairn, a covenanter's grave marker situated on the Southern Upland Way (SUW) and provide information boards explaining the cultural heritage of the cairn to walkers visiting the area.

We've consulted with the SUW Rangers and agreed an additional walking route for the SUW will be installed for the duration of the proposed Development. Located around the western perimeter of the site and offering more open views across the hills to the west, the route would initially be a temporary diversion during construction. On completion the walking route would remain, creating an additional circular route around Allan's Cairn.



- Application Boundary
- Proposed temporary diversion during construction
- Southern Upland Way - Post construction will create additional circular route around Allan's Cairn
- Southern Upland Way



**Environmentally sustainable legacy:** Habitat Management Plan restoring around 23 hectares of modified and drained blanket peat bog using methods successfully used on SPR's windfarms resulting in a likely net gain in biodiversity.



## HOW WE'RE COMMITTED TO THE ENVIRONMENT

ScottishPower was the first of its kind to go **100% green** – we only produce renewable electricity. We're committed to speeding up the transition to cleaner electric transport, improving air quality and over time, driving down bills to deliver a **better future, quicker** for everyone.

We'll deliver this through developing renewable energy responsibly, enhancing the environment, empowering communities and investing £4m every working day on pioneering ideas to make this happen.

Building a sustainable, deliverable pipeline of renewable projects can play an important role in helping to drive a resilient, green and sustainable economic recovery in the UK after the COVID-19 crisis whilst delivering cost-effective progress towards reducing carbon to meet the Net Zero challenge.

Onshore wind will also play a key role in helping to deliver a Net Zero emissions future to tackle the global climate emergency. Our proposed extension at Kilgallioch Windfarm has the potential to impact on climate change and carbon reduction.

The potential savings in CO<sub>2</sub> emissions due to the proposed development of Kilgallioch Windfarm Extension replacing other electricity sources over its lifetime are approximately:



- 65,000 tonnes of CO<sub>2</sub> per year over a fossil fuel mix of electricity



- Assuming a 40 year life, the proposal would save 2.6 million tonnes of CO<sub>2</sub> emissions compared to a fossil fuel mix of electricity



# WHY WE CREATE AN ENVIRONMENTALLY SUSTAINABLE LEGACY

Throughout planning, proposals are sensitively designed to minimise the environmental impact from our projects and seek opportunities for ecological enhancement wherever practicable. The important work we commit to do is discussed in more detail below:

## Case Study 1



Ewe Hill Windfarm: SPR's Habitat Management Plan covers a total area of 214 hectares. This includes 10 hectares of blanket bog restoration through grazing management and 204 hectares of native woodland regeneration.

During construction we removed the former non-native forestry plantation and we are now managing and actively encouraging native woodland regeneration which will have a multitude of benefits including providing quality habitat for black grouse.

## Case Study 2

Kilgallioch Windfarm: SPR has a 24.6 hectare Habitat Management Plan encompassing peatland restoration on the windfarm. We're planting 245 hectares of broadleaf woodlands to replace the non-native commercial forestry previously planted here. This will have many benefits for species such as red squirrel. Four barn owl nest boxes were also installed to provide alternative nesting locations for barn owl off the site. Through sensitive design, we minimise the environmental impact from our projects and seek opportunities for ecological enhancement wherever possible.

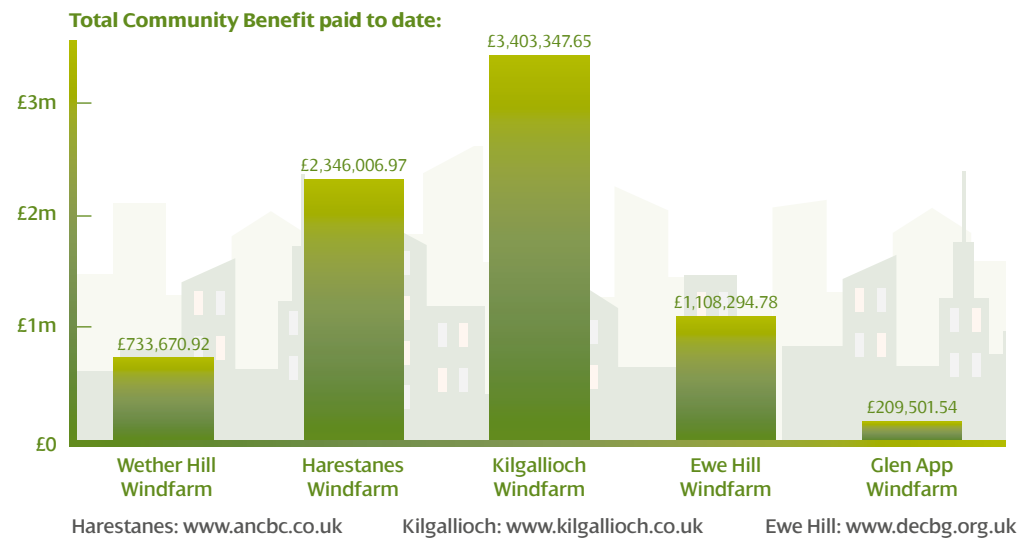


# WE DEVELOP, CONSTRUCT AND OPERATE OUR WINDFARMS

We develop, construct and operate our windfarms throughout the full project lifecycle, positively engaging with local stakeholders early in the development process and building lasting relationships, often for 25 to 40 years.

The consenting of proposals such as Kilgallioch Windfarm Extension, Harestanes South Windfarm Extension and Eucharhead Windfarm will enable us to continue our investment and growth plans within the region.

Our investment in local communities ensures they benefit from renewable energy developments within their area. We'll provide more than £38m in community benefit funds from our windfarms currently operating in Dumfries and Galloway. We're committed to empowering and enabling them to determine how best to spend their community benefit funds, creating a local legacy.



SPR has contributed more than £38m in community benefit funding towards local initiatives across the UK. **£38m**



  
**£7m+**

has gone directly to communities across Dumfries and Galloway. SPR is providing ongoing support and building relationships with those administering our funds.



# WHAT WE CAN ACHIEVE TOGETHER



New Luce Community Council received £67,000 towards the installation of a new children's playpark, creating a safe and exciting outdoor play space, keeping local children active and encouraging more people to visit the park.

## Community Benefit Recipients in Dumfries and Galloway:



Glentool and Bargrennan Community Trust received £60,000 towards the costs of converting the former Glentool Primary School into a multi-use community facility. Plans include a base for outdoor activities, a gallery space and a range of community services within. Based within the Galloway Forest Dark Skies Park the biosphere community now has great potential for building sustainable eco-tourism.

Galloway Mountain Rescue Team received £28,360 to replace 40 safety helmets and contribute to the costs of purchasing a new 4x4 rescue vehicle to support the continued service of keeping locals and visitors safe in the surrounding Galloway hills.



Euan's Playspace Trust in Portpatrick received £15,000 to enhance and maintain the play space following the huge success of the space and the unprecedented visitor numbers.

£22,148 for Food Train to replace and maintain delivery vans providing meals and shopping for elderly residents across Annandale & Eskdale and Nithsdale.

£44,000 to Xcel Youth Trust to deliver a number of events in recent years focussing on activity, employability and leadership for 8-24yr olds across Eskdale.



COMPASS Brain Injury Specialists Ltd - SW Scotland - D&G's only specialist organisation dedicated to helping and enabling people who have an acquired brain injury (ABI), received £7,299 to deliver Talking Heads support group sessions in Stranraer and Wigtown for their families and their carers.





Forestry and  
Land Scotland  
Coilltearachd agus  
Fearann Alba

Harestanes Windfarm Partnership Fund – SPR provides £50,000 every year of the operational life for Forestry and Land Scotland to promote and support of recreational, educational and environmental initiatives in the forest estate in south west Scotland. This helps create and sustain jobs and tourism across the region.



## WHAT DO WE INVEST IN THE LOCAL GREEN ECONOMY?

SPR is looking to the future for a sustainable, faster and more resilient progress on decarbonisation by investing in a green recovery post COVID-19. By continuing to invest in local communities we'll help sustain and create job opportunities by maximising the UK, Scottish and local supply chain.

During the development and construction phase, the projects within Dumfries and Galloway could generate over £50 million GVA and 600 person-years of employment in Scotland (including £10 million GVA and 100 person-years of employment in Dumfries and Galloway and South Ayrshire). Peak construction would see around 150 jobs on sites. Eucharhead RED would see approximately £14.5 million of the construction spend locally in and around Dumfries and Galloway.

Through the development, construction and operation of our windfarms, SPR has spent over c£5m directly with businesses across Dumfries and Galloway from Stranraer to Langholm.



### Examples of SPR's c£5m spend in Dumfries and Galloway

Hotels:  
**£128,000**

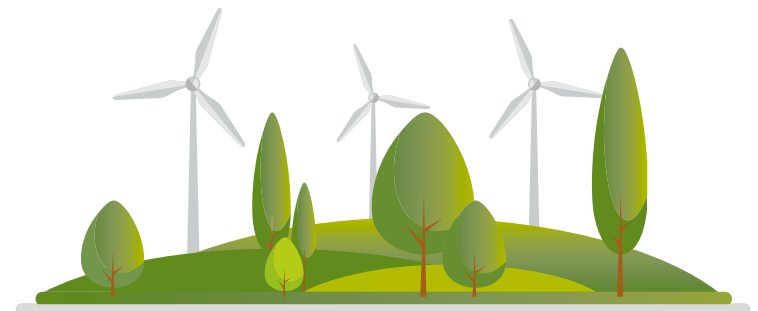
Tyres & Garage Services:  
**£15,000**

Private Leasing:  
**£13,000**

Civil Engineering:  
**£500,000**

Technical Specialist Services:  
**£245,000**

Fencing:  
**£50,000**



PR & Design:  
**£10,000**

Building Merchants:  
**£50,000**

Council Services:  
**£380,000**

Construction:  
**£139,000**

Forestry Services:  
**£2,000,000**

Surveying:  
**£100,000**



## SUPPORTING THE SOUTHERN UPLAND WAY

As part of the construction of Kilgallioch Windfarm, SPR undertook 4.5km of upgrade works on the Southern Upland Way. The windfarm also contributes £50,000 every year of its operational life to Dumfries and Galloway Council towards the employment of two rangers to promote, manage and maintain the Southern Upland Way across the region, including ancillary routes and associated services.

With the rangers plans to promote accommodation and other services along the route to the 80,000 annual users, there are fantastic potential economic benefits for local businesses from visitors to the Southern Upland Way.

[Find out more about the five year plan for the SUW here](#)

“The Southern Upland Way is a national treasure as Scotland’s only official coast-to-coast walk, with thousands experiencing it’s rugged and beautiful scenery every year – its particularly special to me as I’ve childhood memories of family holidays and frequently walking part of the route from Killantringan. I’m delighted that ScottishPower has committed to funding further development and management of the Southern Upland Way from our Kilgallioch Windfarm for years to come, enabling many more people to enjoy this spectacular trail, as well as supporting connections with local communities and businesses along the route whom I hope will benefit from increased footfall.”

**Lindsay McQuade,**  
CEO, ScottishPower Renewables



ScottishPower Renewables  
320 St Vincent St, Glasgow G2 5AD  
[www.scottishpowerrenewables.com](http://www.scottishpowerrenewables.com)

