

1	19/06/2019	JM	Second Issue.
0	25/03/2019	JM	First Issue.
Rev	Date	By	Comment

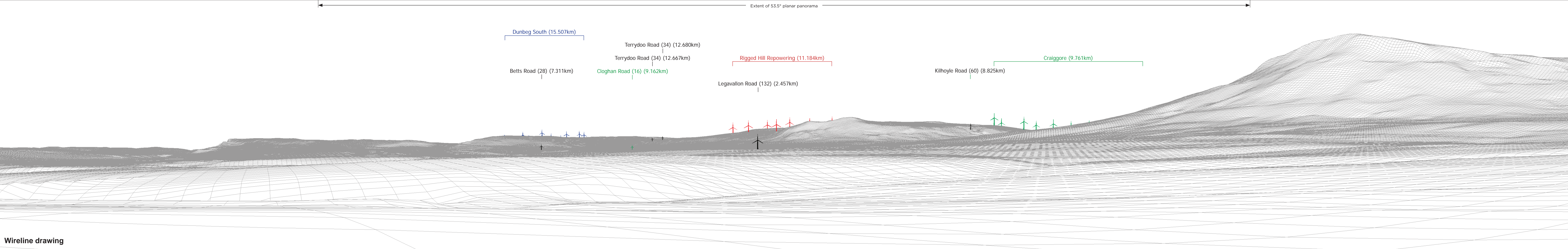
This is Crown Copyright and is reproduced with the permission of Land & Property Services under delegated authority the Controller of Her Majesty's Stationery Office, © Crown Copyright and database right 2017 Licence Number 100,220-163505

**Rigged Hill Windfarm Repowering**  
Figure 6.43 - Viewpoint 16  
Garvagh Road, Dungiven

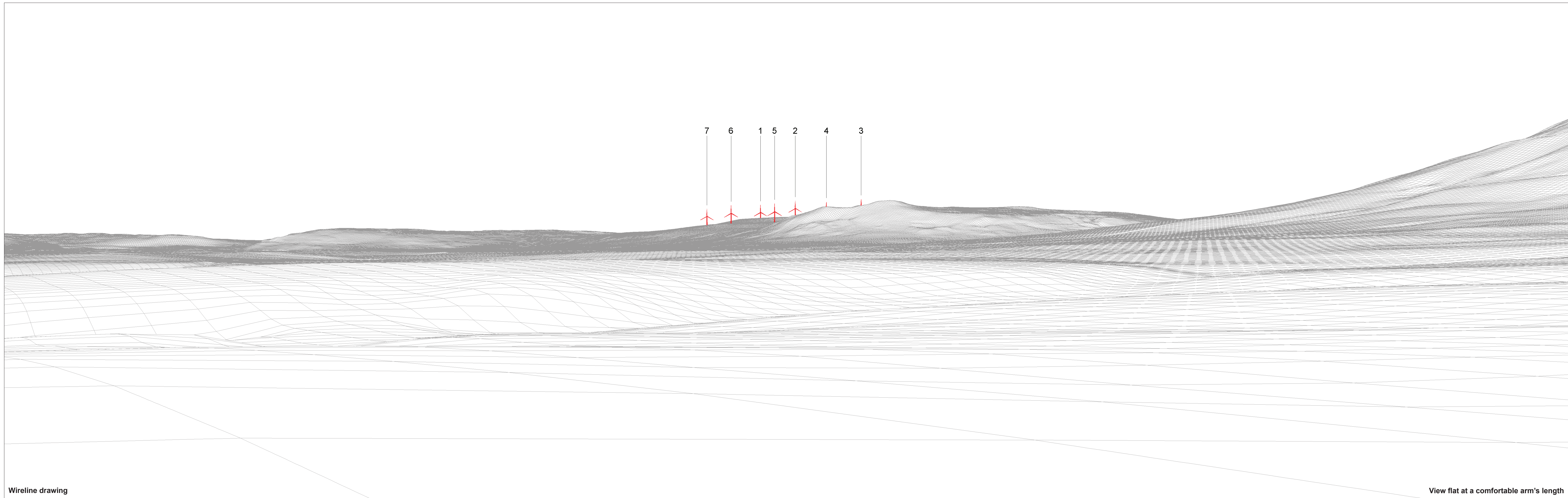
<b>Drawing Number:</b> 2607-LVIA-045	Datum TM65	Projection TM
Scale @ A3 1:25,000	Drawing produced by <b>Optimised Environments Ltd.</b>	

U:\PS-EE-GIS\2009 REV\001









<b>OS reference:</b>	269327 E 409822 N	<b>Horizontal field of view:</b>	53.5° (planar projection)	<b>Camera:</b>	Canon EOS 6D	<b>Figure: 6.43c</b> <b>Viewpoint 16: Garvagh Road, Dungiven</b>
<b>Eye level:</b>	85.98m AOD	<b>Principal distance</b>	812.5 mm	<b>Lens:</b>	50mm (Canon EF 50mm f/1.4)	
<b>Direction of view:</b>	30°	<b>Paper size:</b>	841 x 297 mm	<b>Camera height:</b>	1.5 m AGL	
<b>Nearest turbine:</b>	11.184 km	<b>Correct printed image size:</b>	820 x 260 mm	<b>Date and time:</b>	20/06/17, 13:31	





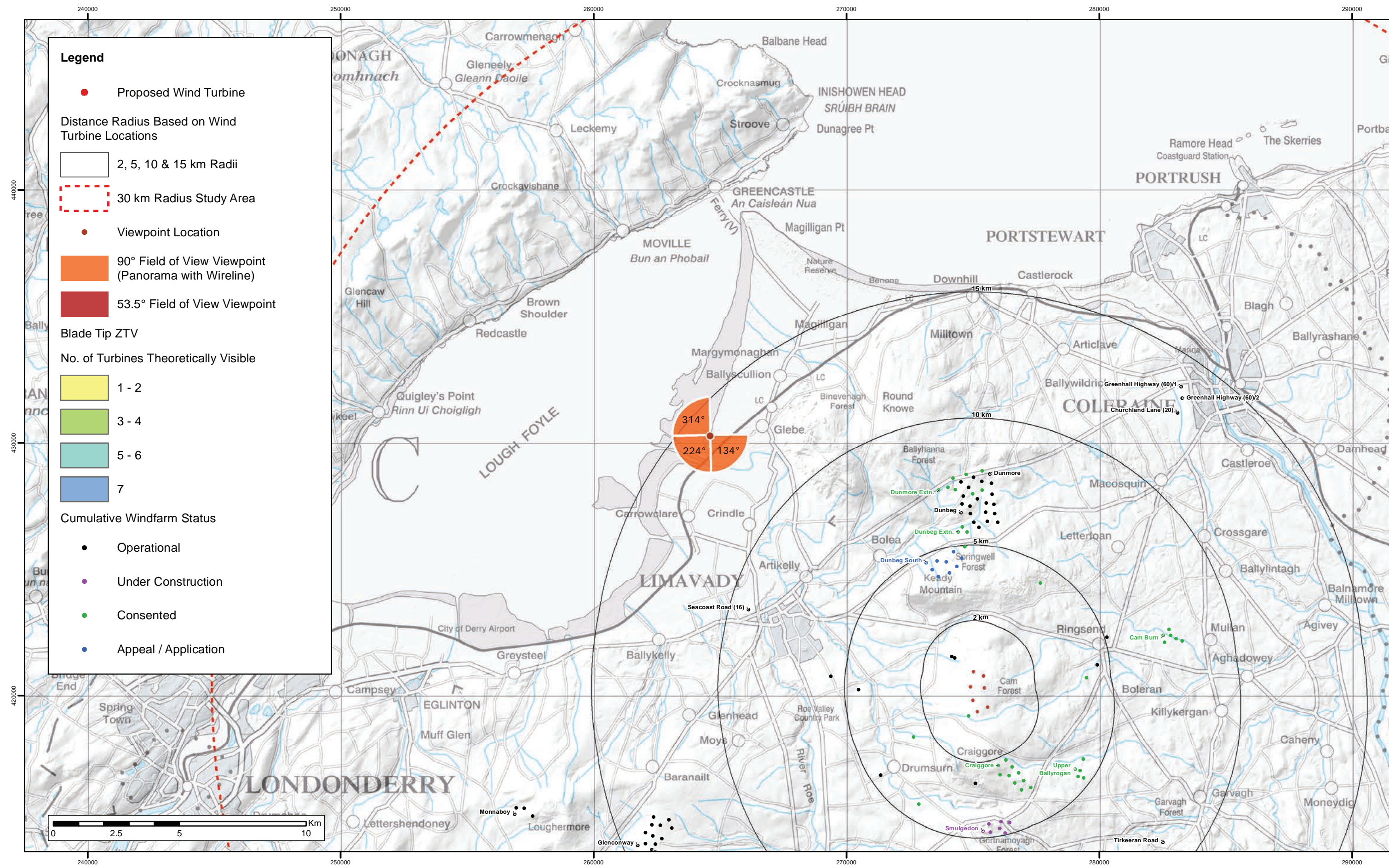
Photomontage

View flat at a comfortable arm's length

OS reference:	269327 E 409822 N	Horizontal field of view:	53.5° (planar projection)	Camera:	Canon EOS 6D
Eye level:	85.98m AOD	Principal distance	812.5 mm	Lens:	50mm (Canon EF 50mm f/1.4)
Direction of view:	30°	Paper size:	841 x 297 mm	Camera height:	1.5 m AGL
Nearest turbine:	11.184 km	Correct printed image size:	820 x 260 mm	Date and time:	20/06/17, 13:31

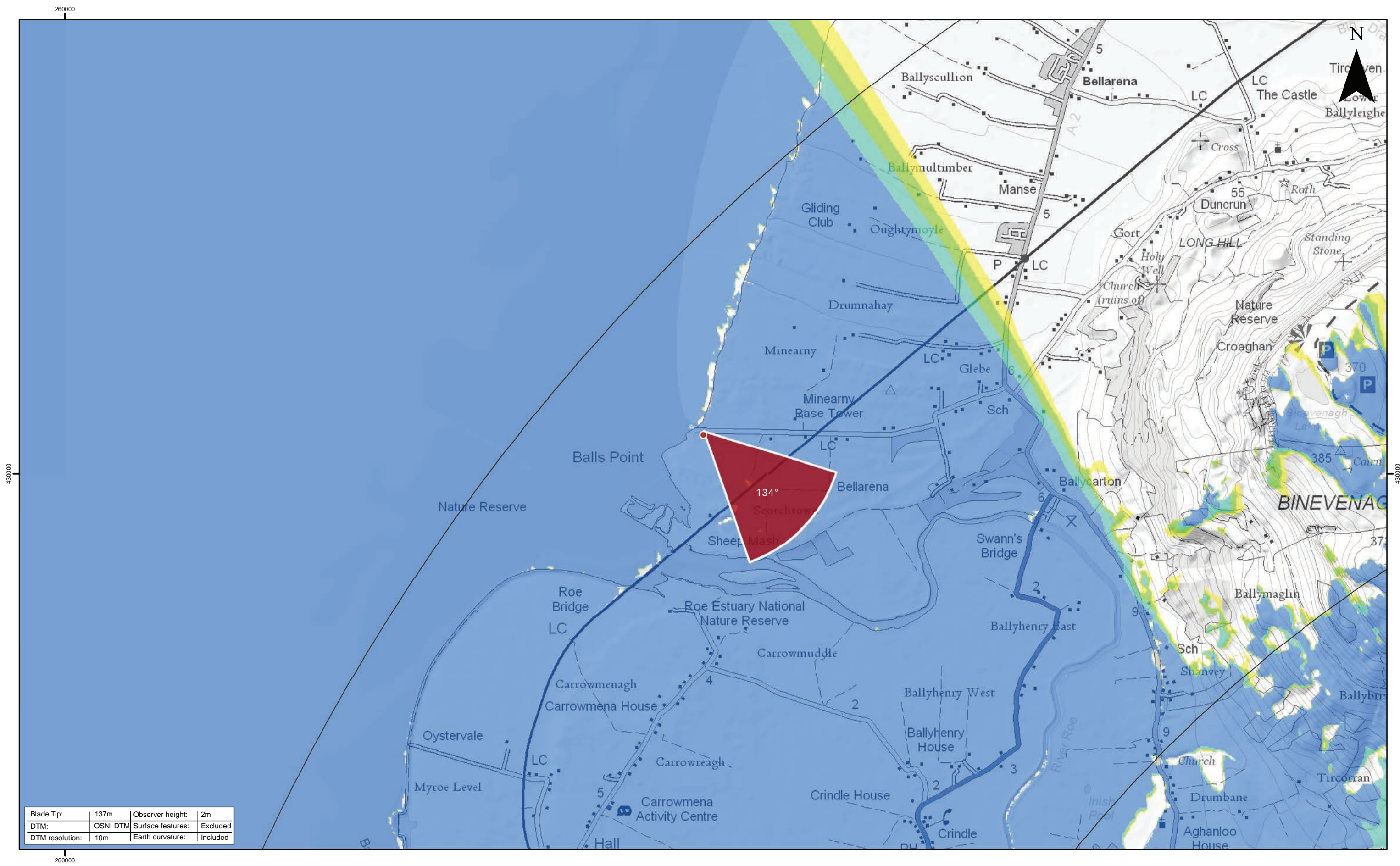
Figure: 6.43d  
Viewpoint 16: Garvagh Road, Dungiven



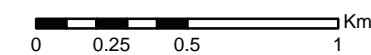


**Note:**

1. **ZTV:** Created using ESRI ArcGIS 10.6 software using the following data and parameters:  
Blade tip height: 137m  
DTM Data: OSNI 10m DTM  
Observer height: 2m  
No surface features, such as buildings or trees, were included in the analysis.  
Earth curvature and light refraction have been included in calculations.



1	19/06/2019	JM	Second Issue.
0	25/03/2019	JM	First Issue.
<b>Rev</b>	<b>Date</b>	<b>By</b>	<b>Comment</b>



This is Crown Copyright and is reproduced with the permission of Land & Property Services under delegated authority the Controller of Her Majesty's Stationery Office, © Crown Copyright and database right 2017 Licence Number 100,220-163505

## Rigged Hill Windfarm Repowering

Figure 6.44 - Viewpoint 17  
Scotchtown Road, Magilligan

**Drawing Number:**  
2607-LVIA-046

Datum  
TM65Projection  
TM

Scale @ A3  
1:25,000

**Drawing produced by  
Optimised Environments Ltd.**

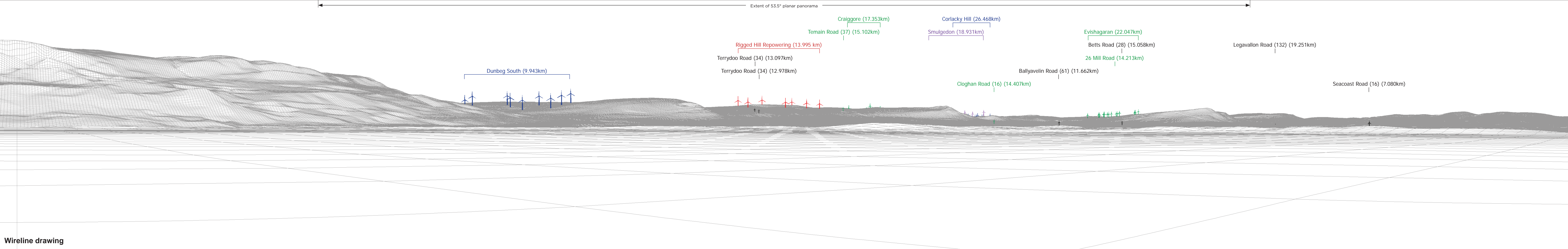
JKPS-FGE-GIS0009 REV 001





Baseline photograph

This image provides landscape and visual context only



Wireline drawing

OS reference:	264604 E 430308 N	Horizontal field of view:	90° (cylindrical projection)	Camera:	Canon EOS 6D
Eye level:	5.06m AOD	Principal distance:	522 mm	Lens:	50mm (Canon EF 50mm f/1.4)
Direction of view:	134°			Camera height:	1.5 m AGL
Nearest turbine:	13.995 km			Date and time:	30/04/18, 15:13

Figure: 6.44b  
Viewpoint 17: Scotchtown Road, Magilligan





Baseline photograph

This image provides landscape and visual context only



Wireline drawing

OS reference:	264604 E 430308 N	Horizontal field of view:	90° (cylindrical projection)	Camera:	Canon EOS 6D
Eye level:	5.06m AOD	Principal distance	522 mm	Lens:	50mm (Canon EF 50mm f/1.4)
Direction of view:	224°			Camera height:	1.5 m AGL
Nearest turbine:	13.995 km			Date and time:	30/04/18, 15:13

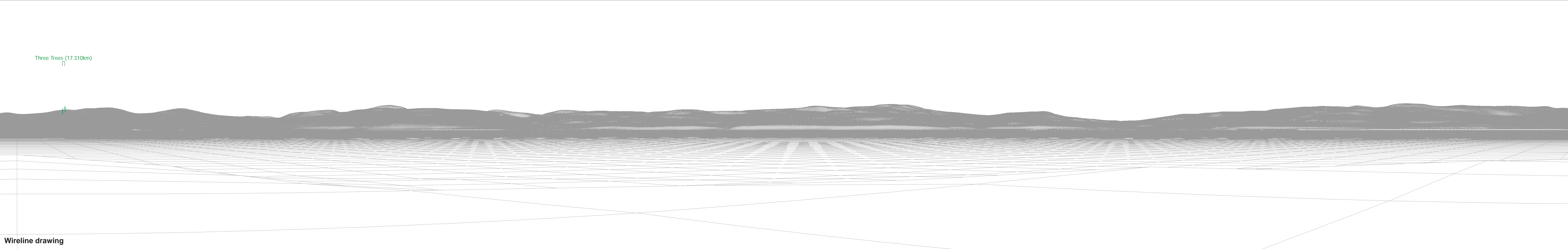
Figure: 6.44c  
Viewpoint 17: Scotchtown Road, Magilligan





Baseline photograph

This image provides landscape and visual context only

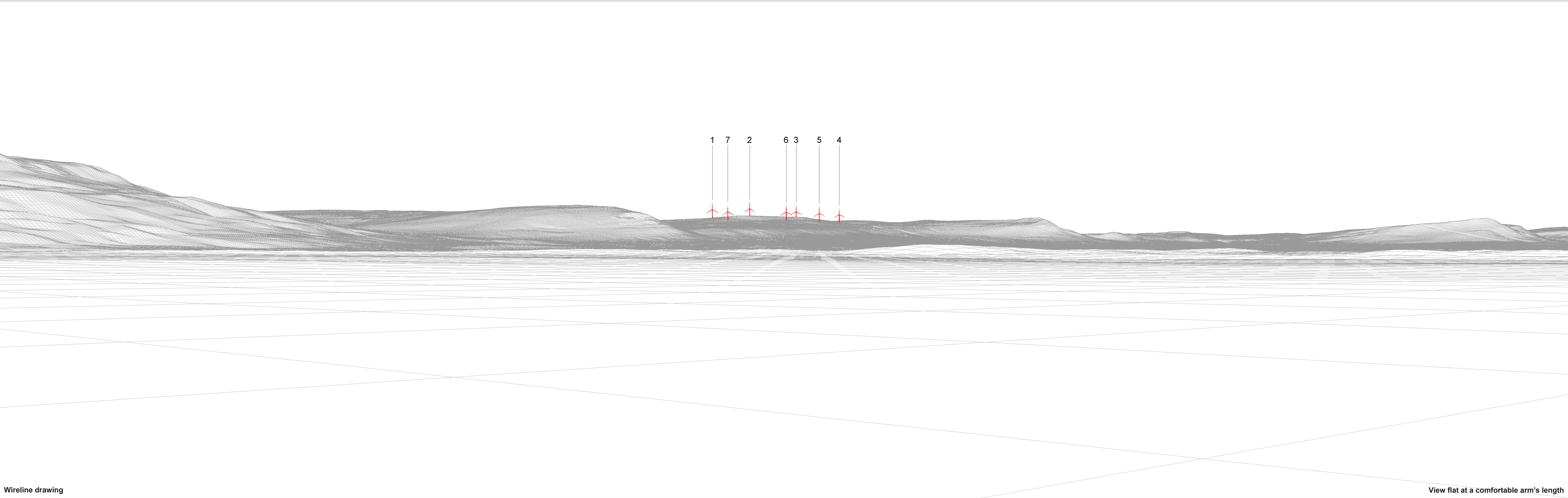


Wireline drawing

OS reference:	264604 E 430308 N	Horizontal field of view:	90° (cylindrical projection)	Camera:	Canon EOS 6D
Eye level:	5.06m AOD	Principal distance	522 mm	Lens:	50mm (Canon EF 50mm f/1.4)
Direction of view:	314°			Camera height:	1.5 m AGL
Nearest turbine:	13.995 km			Date and time:	30/04/18, 15:13

Figure: 6.44d  
Viewpoint 17: Scotchtown Road, Magilligan





Wireline drawing

View flat at a comfortable arm's length

OS reference:	264604 E 430308 N	Horizontal field of view:	53.5° (planar projection)	Camera:	Canon EOS 6D
Eye level:	5.06m AOD	Principal distance	812.5 mm	Lens:	50mm (Canon EF 50mm f/1.4)
Direction of view:	134°	Paper size:	841 x 297 mm	Camera height:	1.5 m AGL
Nearest turbine:	13.995 km	Correct printed image size:	820 x 260 mm	Date and time:	30/04/18, 15:13

Figure: 6.44e  
Viewpoint 17: Scotchtown Road, Magilligan



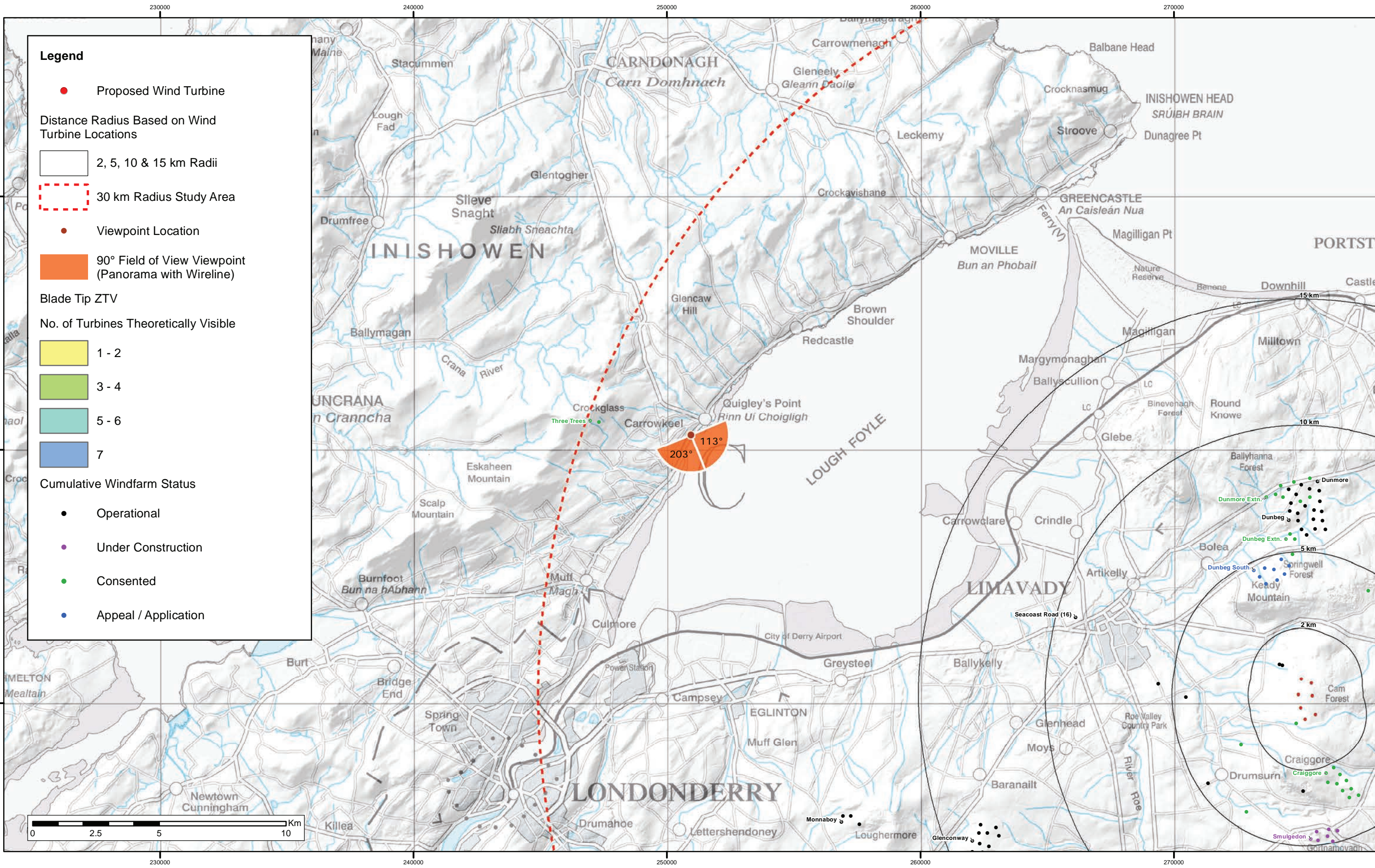


Photomontage

View flat at a comfortable arm's length

OS reference:	264604 E 430308 N	Horizontal field of view:	53.5° (planar projection)	Camera:	Canon EOS 6D	Figure: 6.44f
Eye level:	5.06m AOD	Principal distance	812.5 mm	Lens:	50mm (Canon EF 50mm f/1.4)	Viewpoint 17: Scotchtown Road, Magilligan
Direction of view:	134°	Paper size:	841 x 297 mm	Camera height:	1.5 m AGL	
Nearest turbine:	13.995 km	Correct printed image size:	820 x 260 mm	Date and time:	30/04/18, 15:13	

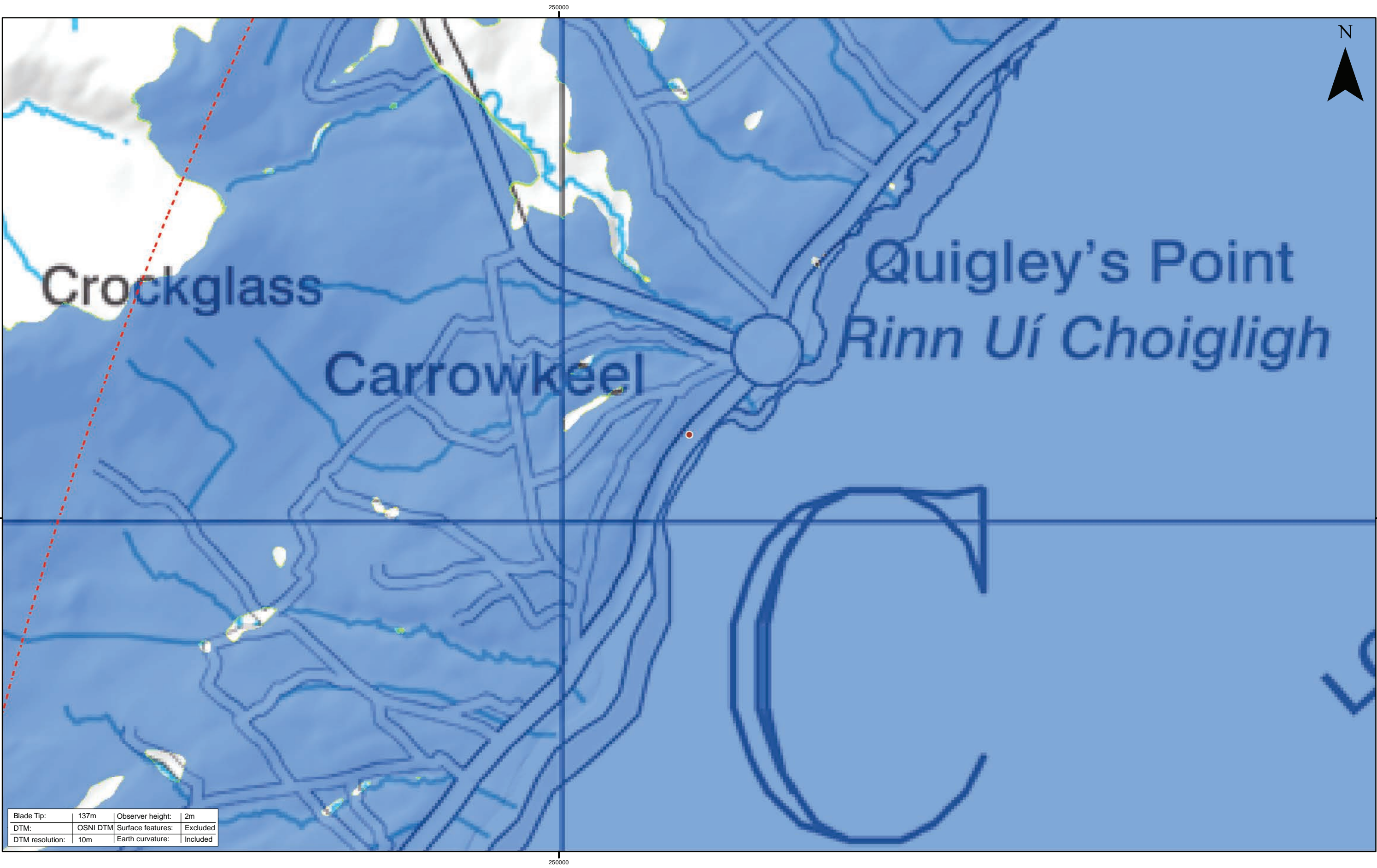




**Note:**

1. **ZTV:** Created using ESRI ArcGIS 10.6 software using the following data and parameters:  
Blade tip height: 137m  
DTM Data: OSNI 10m DTM  
Observer height: 2m  
No surface features, such as buildings or trees, were included in the analysis.  
Earth curvature and light refraction have been included in calculations.

2. **Cumulative Windfarms:** Single turbines in close proximity to the Development have not been labelled. Full 30km Study Area is not being shown on this figure. For full extent of 30km Study Area and assessed cumulative windfarms see Figure 6.12.



1	19/06/2019	JM	Second Issue.
0	25/03/2019	JM	First Issue.
Rev	Date	By	Comment

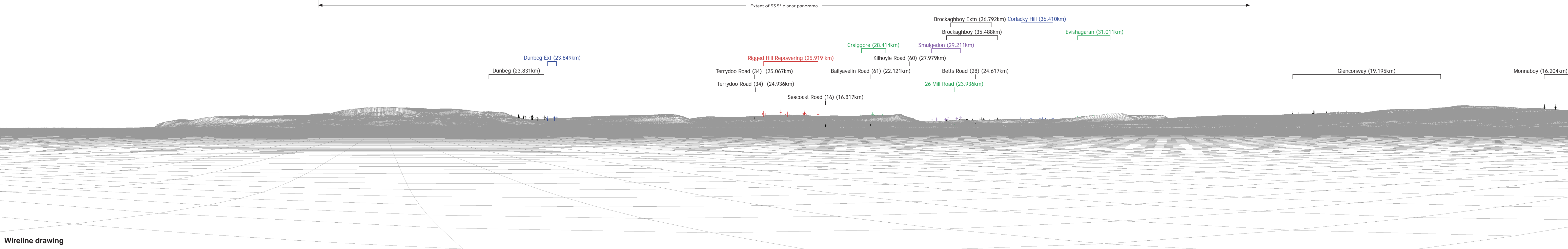
This is Crown Copyright and is reproduced with the permission of Land & Property Services under delegated authority the Controller of Her Majesty's Stationery Office, © Crown Copyright and database right 2017 Licence Number 100,220-163505

**Rigged Hill Windfarm Repowering**  
Figure 6.45 - Viewpoint 18  
Greenbank Church, Quigley's Point,  
Republic of Ireland

<b>Drawing Number:</b> 2607-LVIA-047	Datum TM65	Projection TM
Scale @ A3 1:25,000	<b>Drawing produced by</b> Optimised Environments Ltd.	

WPS-REG-050009 REV/001



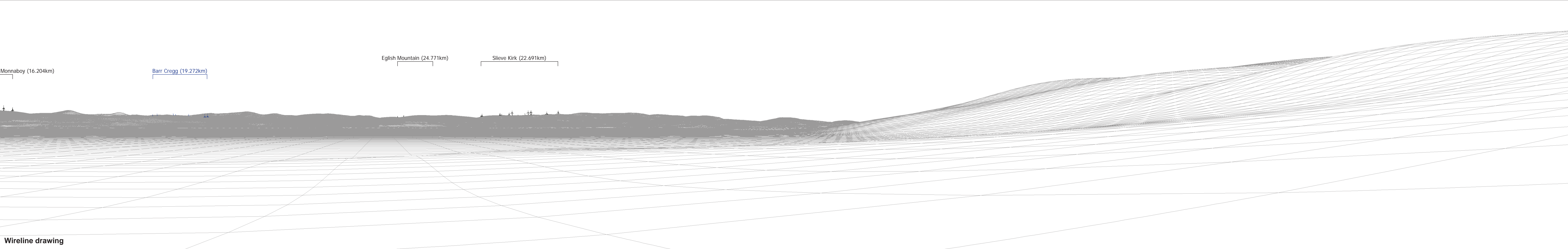






Baseline photograph

This image provides landscape and visual context only

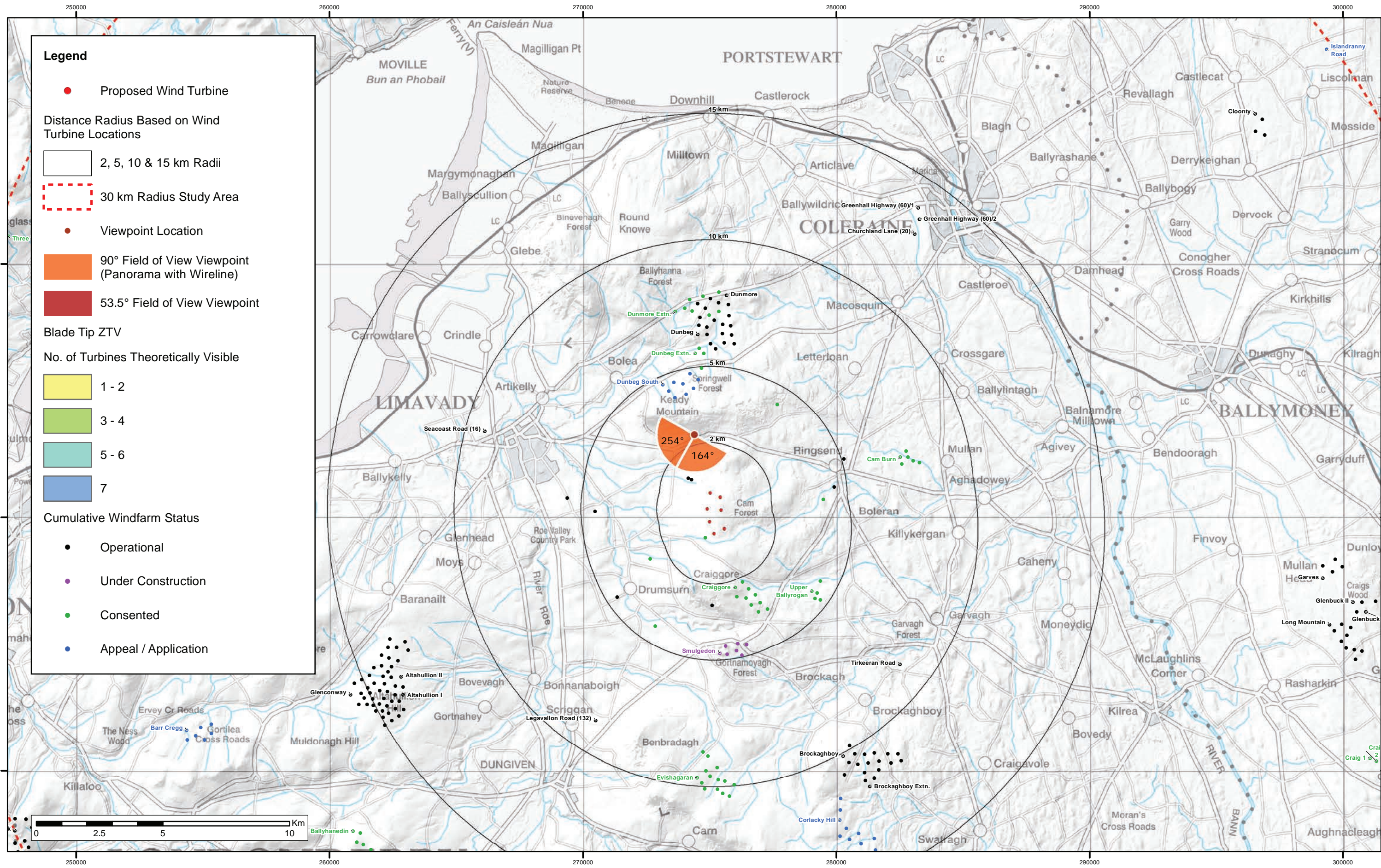


Wireline drawing

OS reference:	250935 E 430600 N	Horizontal field of view:	90° (cylindrical projection)	Camera:	Canon EOS 6D
Eye level:	5.05m AOD	Principal distance	522 mm	Lens:	50mm (Canon EF 50mm f/1.4)
Direction of view:	203°			Camera height:	1.5 m AGL
Nearest turbine:	25.940 km			Date and time:	30/04/18, 16:36

Figure: 6.45c  
Viewpoint 18: Greenbank Church, Quigley's Point, Republic of Ireland

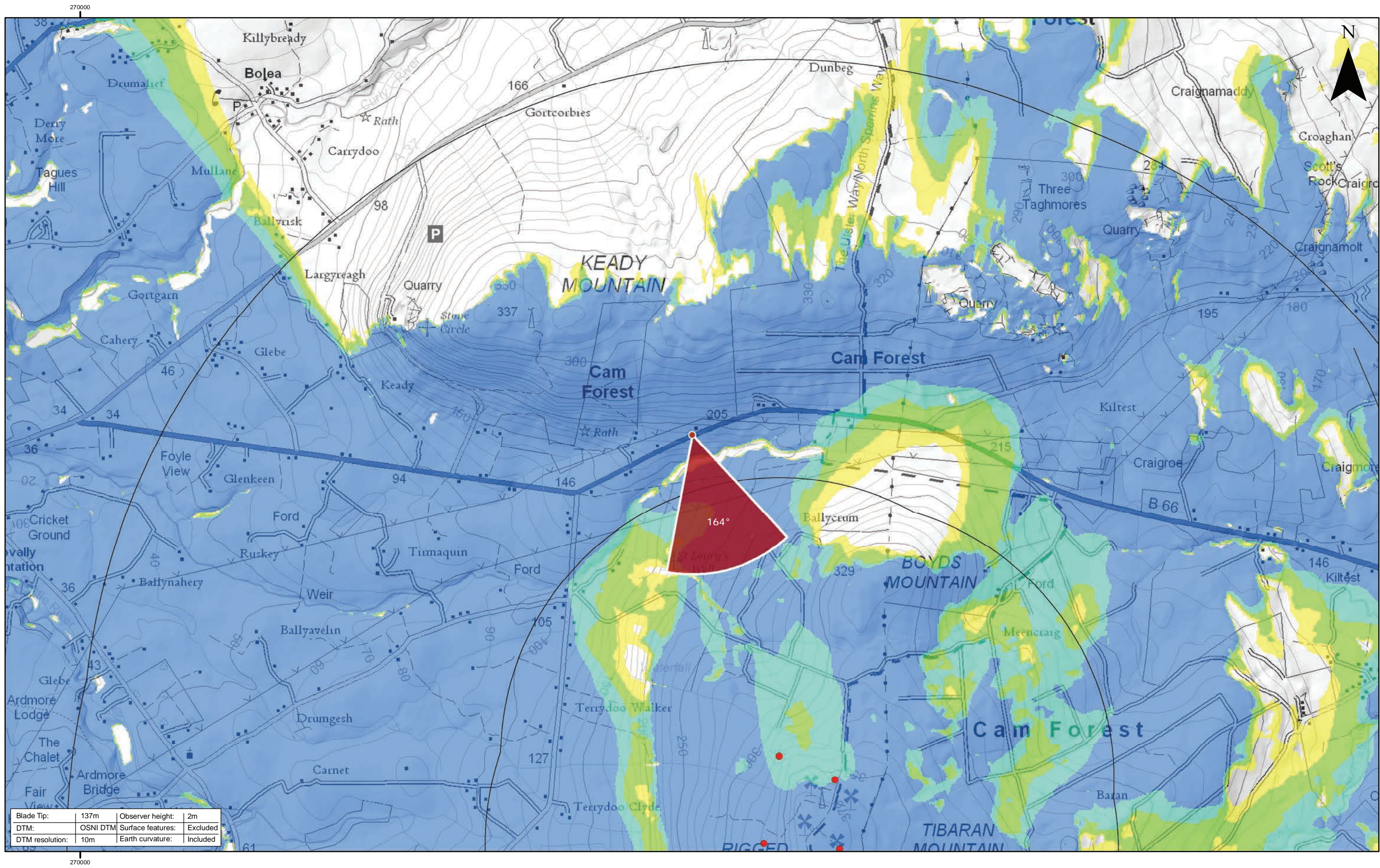




**Note:**

1. **ZTV:** Created using ESRI ArcGIS 10.6 software using the following data and parameters:  
Blade tip height: 137m  
DTM Data: OSNI 10m DTM  
Observer height: 2m  
No surface features, such as buildings or trees, were included in the analysis.  
Earth curvature and light refraction have been included in calculations.

2. **Cumulative Windfarms:** Single turbines in close proximity to the Development have not been labelled. Full 30km Study Area is not being shown on this figure. For full extent of 30km Study Area and assessed cumulative windfarms see Figure 6.12.



Rev	Date	By	Comment
1	19/06/2019	JM	Second Issue.
0	25/03/2019	JM	First Issue.

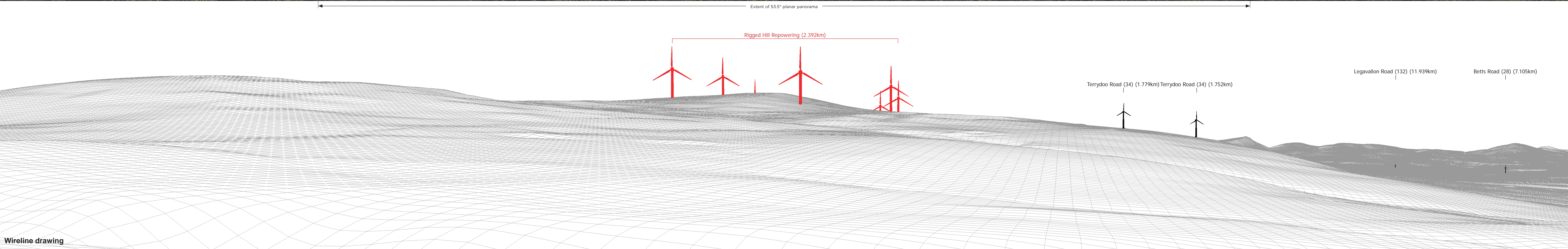
0	25/03/2019	JM	First Issue.
---	------------	----	--------------

This is Crown Copyright and is reproduced with the permission of Land & Property Services under delegated authority the Controller of Her Majesty's Stationary Office, © Crown Copyright and database right 2017 Licence Number 100,220-163505

<b>Rigged Hill Windfarm Repowering</b> Figure 6.46 - Viewpoint 19 B66, west of Ringsend, north of site	<b>Drawing Number:</b> 2607-LVIA-048	<b>Datum</b> TM65	<b>Projection</b> TM
	<b>Scale @ A3</b> 1:25,000	<b>Drawing produced by</b> Optimised Environments Ltd.	

U:\P\2607-LVIA-048 REV 001



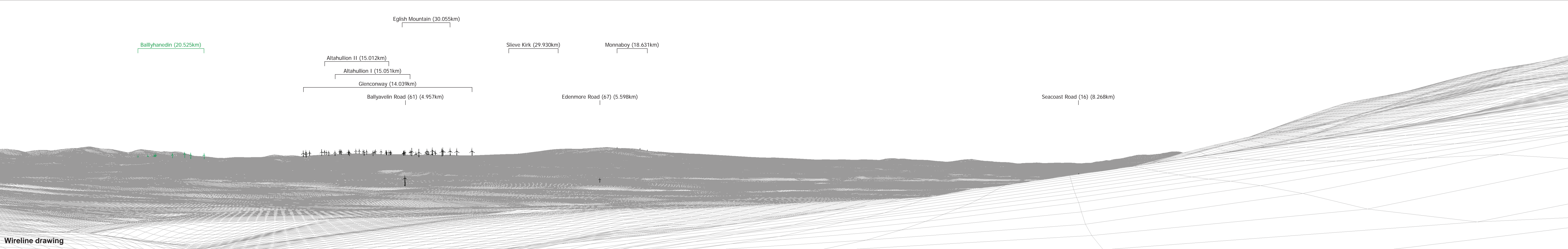






Baseline photograph

This image provides landscape and visual context only

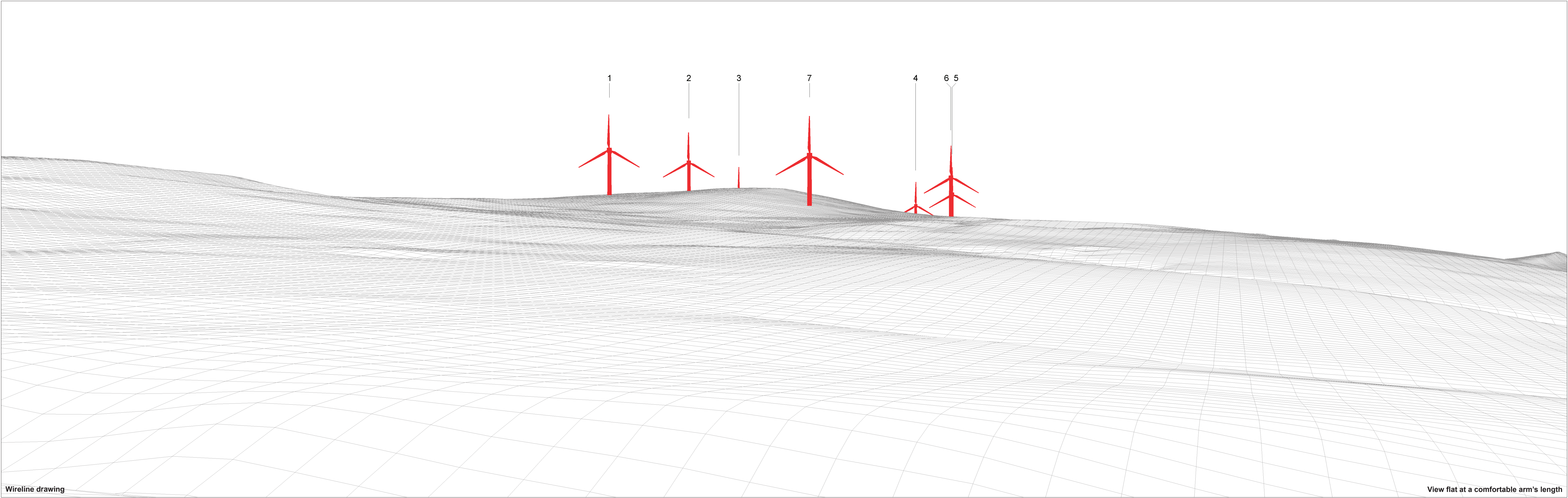


Wireline drawing

OS reference:	274395 E 423267 N	Horizontal field of view:	90° (cylindrical projection)	Camera:	Canon EOS 5D Mark II
Eye level:	190.95 m AOD	Principal distance:	522 mm	Lens:	50mm (Canon EF 50mm f/1.4)
Direction of view:	254°			Camera height:	1.5 m AGL
Nearest turbine:	2.392 km			Date and time:	30/04/18, 11:54

Figure: 6.46c  
Viewpoint 19: B66, west of Ringsend, north of site





Wireline drawing

View flat at a comfortable arm's length

OS reference:	274395 E 423267 N	Horizontal field of view:	53.5° (planar projection)	Camera:	Canon EOS 5D Mark II	Figure: 6.46d
Eye level:	190.95 m AOD	Principal distance:	812.5 mm	Lens:	50mm (Canon EF 50mm f/1.4)	Viewpoint 19: B66, west of Ringsend, north of
Direction of view:	164°	Paper size:	841 x 297 mm	Camera height:	1.5 m AGL	site
Nearest turbine:	2.392 km	Correct printed image size:	820 x 260 mm	Date and time:	30/04/18, 11:54	





<b>OS reference:</b>	274395 E 423267 N	<b>Horizontal field of view:</b>	53.5° (planar projection)	<b>Camera:</b>	Canon EOS 5D Mark II
<b>Eye level:</b>	190.95 m AOD	<b>Principal distance</b>	812.5 mm	<b>Lens:</b>	50mm (Canon EF 50mm f/1.4)
<b>Direction of view:</b>	164°	<b>Paper size:</b>	841 x 297 mm	<b>Camera height:</b>	1.5 m AGL
<b>Nearest turbine:</b>	2.392 km	<b>Correct printed image size:</b>	820 x 260 mm	<b>Date and time:</b>	30/04/18, 11:54

**Figure: 6.46e**  
**Viewpoint 19: B66, west of Ringsend, north of site**