

# East Anglia ONE Offshore Windfarm

## **ScottishPower Renewables Public Notice Temporary Public Right of Way Diversion**

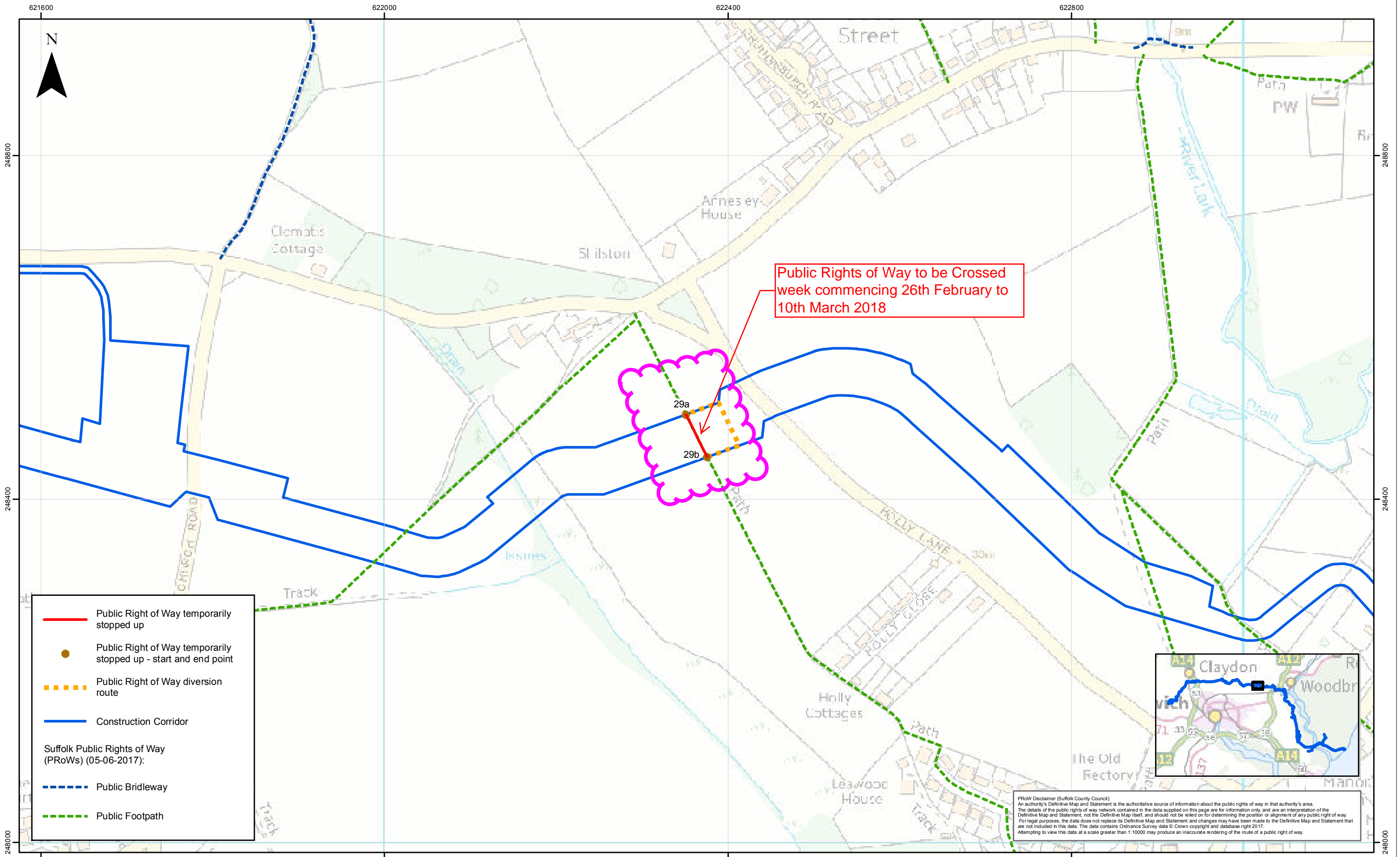
This footpath (Ref PRow 29a to 29b) will be closed between 26th February to 10th March due to onshore construction activity relating to the East Anglia ONE Offshore Windfarm development.

An alternative temporary route is available by following the map below.

This temporary diversion is implemented under Part 3 of the granted Development Consent Order Ref 2014 No. 0000.

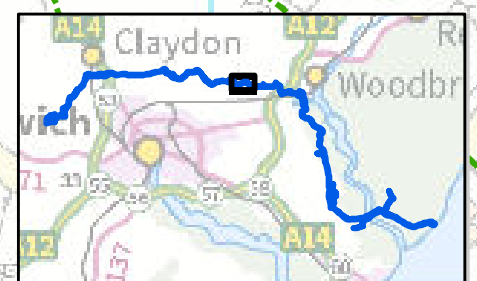
The footpath will be closed for approximately 2 weeks and we wish to apologise in advance for any inconvenience caused by these temporary works

For any further information please contact Community Liaison Officer Ed Rees on 07710 049240.



Public Rights of Way to be Crossed  
week commencing 26th February to  
10th March 2018

- Public Right of Way temporarily stopped up
  - Public Right of Way temporarily stopped up - start and end point
  - - - Public Right of Way diversion route
  - Construction Corridor
- Suffolk Public Rights of Way (PRoWs) (05-06-2017):
- - - Public Bridleway
  - - - Public Footpath



**PRoW Disclaimer (Suffolk County Council):**  
An authority's Definitive Map and Statement is the authoritative source of information about the public rights of way in that authority's area. The details of the public rights of way network contained in the data supplied on this page are for information only, and are an interpretation of the Definitive Map and Statement, not the Definitive Map itself, and should not be relied on for determining the position or alignment of any public right of way. For legal purposes, the data does not replace its Definitive Map and Statement and changes may have been made to the Definitive Map and Statement that are not included in this data. The data contains Ordnance Survey data © Crown copyright and database right 2017. Attempting to view this data at a scale greater than 1:10000 may produce an inaccurate rendering of the route of a public right of way.



| Rev | Date       | By | Comment                | Approved: |
|-----|------------|----|------------------------|-----------|
| 1   | 20/06/2017 | DB | Issued for Information | AK        |

1:4,000  
Scale @ A3

© Crown Copyright and SeaZone Solutions Limited. All rights reserved. Product Licence No. 082010.001. This product has been derived in part from material obtained from the UK Hydrographic Office with the permission of the Controller of Her Majesty's Stationery Office and UK Hydrographic Office. NOT TO BE USED FOR NAVIGATION.

**East Anglia ONE**  
PRoW Closure between 29a to 29b,  
SSC PRoW Unique ID: 8078

|               |                       |
|---------------|-----------------------|
| <b>Drg No</b> | EA1-ENG-DB-IBR-035169 |
| <b>Rev</b>    | 1                     |
| <b>Date</b>   | 20/06/2017            |
| <b>Figure</b> | 1.21                  |

Coordinate System:  
BNG  
Datum:  
OSGB36