

East Anglia ONE Offshore Windfarm

ScottishPower Renewables Public Notice Temporary Public Right of Way Diversion

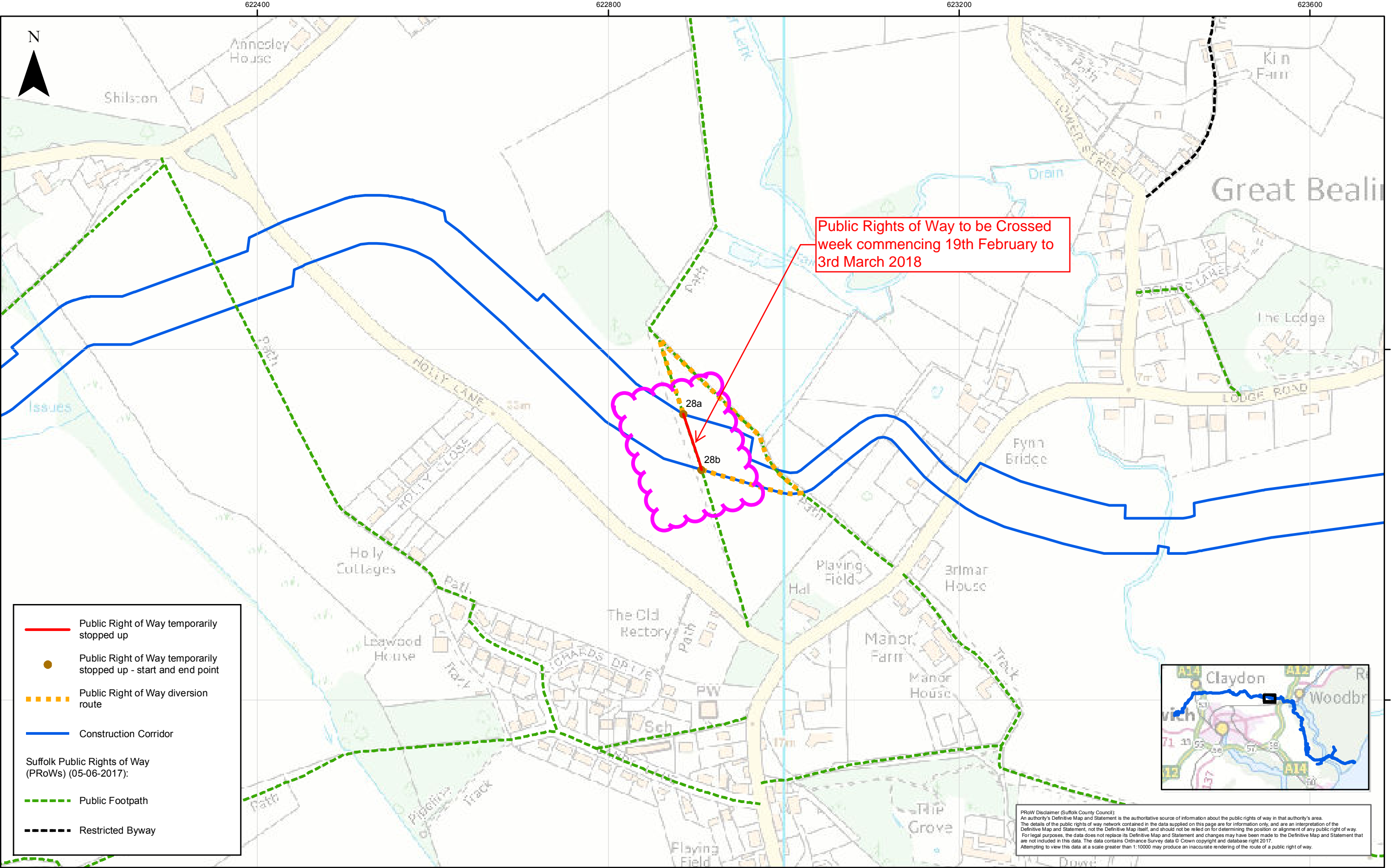
This footpath (Ref PRow 28a to 28b) will be closed between 19th February to 3rd March due to onshore construction activity relating to the East Anglia ONE Offshore Windfarm development.


An alternative temporary route is available by following the map below.

This temporary diversion is implemented under Part 3 of the granted Development Consent Order Ref 2014 No. 0000.

The footpath will be closed for approximately 2 weeks and we wish to apologise in advance for any inconvenience caused by these temporary works

For any further information please contact Community Liaison Officer Ed Rees on 07710 049240.





Rev	Date	By	Comment	Checked:	Approved:
1	20/06/2017	DB	Issued for Information	AK	CD

1:4,000
Scale @ A3

0 25 50 100 150 200 Meters

East Anglia ONE
PRoW Closure between 28a to 28b,
SSC PRoW Unique ID: 8079

Drg No	EA1-ENG-DB-IBR-035169	
Rev	1	Coordinate System: BNG Datum: OSGB36
Date	20/06/2017	
Figure	1.20	