

East Anglia ONE Offshore Windfarm

ScottishPower Renewables Public Notice Temporary Public Right of Way Diversion

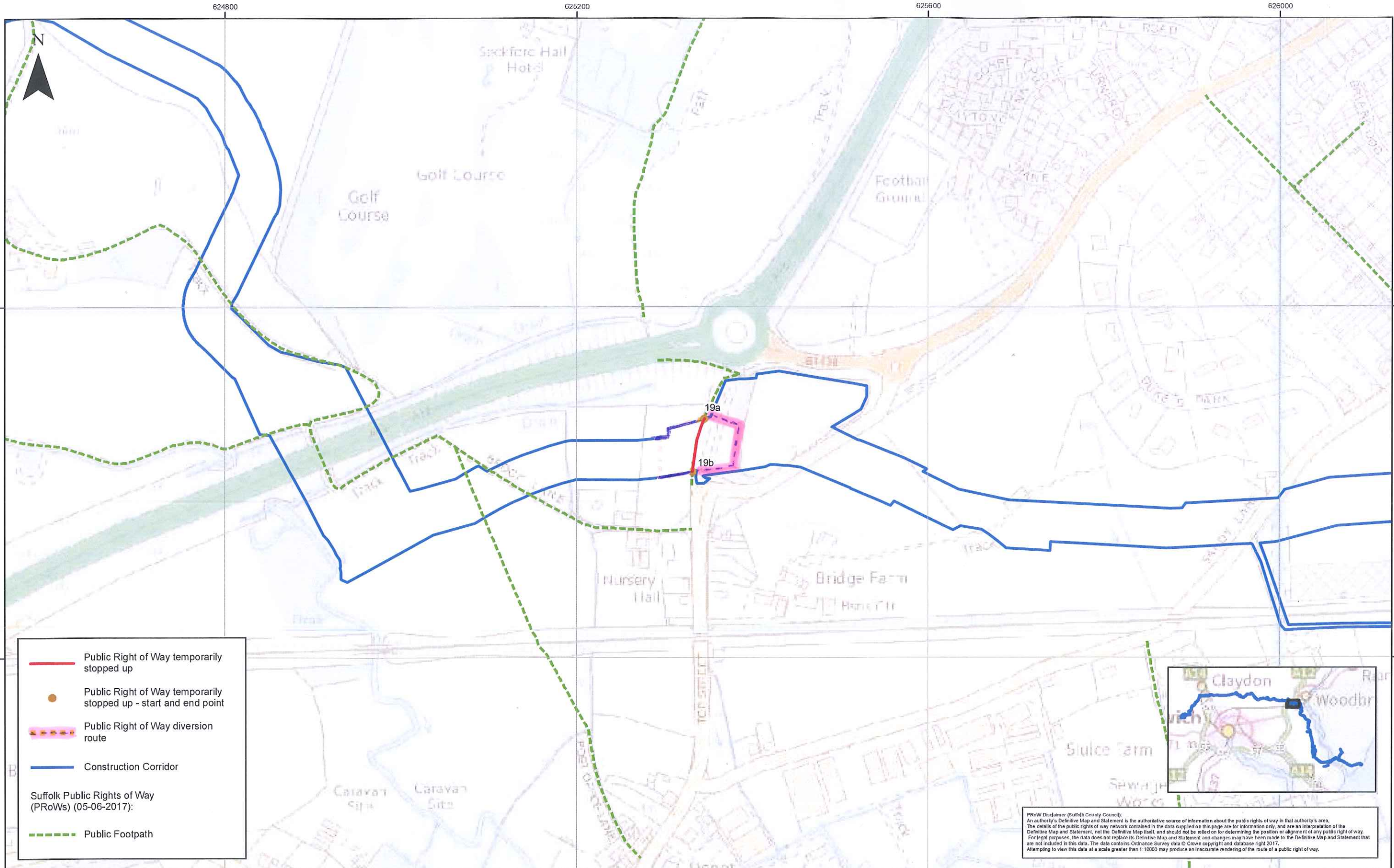
This footpath (Ref PRow 19) will be closed between 30th September and 18th October due to onshore construction activity relating to the East Anglia ONE Offshore Windfarm development

An alternative temporary route is available by following the map below.

This temporary diversion is implemented under Part 3 of the granted Development Consent Order Ref 2014 No. 0000.

The footpath will be closed for approximately 2 weeks and we wish to apologise in advance for any inconvenience caused by these temporary works

For any further information please contact Community Liaison Officer Ed Rees on 0800 195 0029.



PRoW Disclaimer (Suffolk County Council)
 An authority's Definitive Map and Statement is the authoritative source of information about the public rights of way in that authority's area. The details of the public rights of way network contained in the data supplied on this page are for information only, and are an interpretation of the Definitive Map and Statement, not the Definitive Map itself, and should not be relied on for determining the position or alignment of any public right of way. For legal purposes, the data does not replace its Definitive Map and Statement and changes may have been made to the Definitive Map and Statement that are not included in this data. The data contains Ordnance Survey data © Crown copyright and database right 2017. Attempting to view this data at a scale greater than 1:10000 may produce an inaccurate rendering of the route of a public right of way.



Rev	Date	By	Comment
1	20/06/2017	DB	Issued for Information

Prepared:	DB	Scale @ A3	1:4,000
Checked:	AK	<small>This map has been produced to the best known information at the time of issue, and has been produced for your information only. Please consult with the SPR Office GIS team to ensure the content is still current before using the information contained on this map. To the fullest extent permitted by law, we accept no responsibility or liability (whether in contract, tort (including negligence) or otherwise) in respect of any errors or omissions in the information contained in the map and shall not be liable for any loss, damage or expense caused by such errors or omissions.</small>	
Approved:	CD	<small>© Crown Copyright and SeaZone Solutions Limited. All rights reserved. Product Licence No. 062010.001. This product has been derived in part from material obtained from the UK Hydrographic Office with the permission of the Controller of Her Majesty's Stationery Office and UK Hydrographic Office. NOT TO BE USED FOR NAVIGATION.</small>	



East Anglia ONE

PRoW Closure between 19a to 19b,
 SSC PRoW Unique ID: 8126

Drg No	EA1-ENG-DB-IBR-035169
Rev	1
Date	20/06/2017
Figure	1.13
Coordinate System:	BNG
Datum:	OSGB36