

Issue Date	03/05/2023
Activity	Confirmation of Floating LiDAR and Metocean Survey Deployment
Notice to Mariners Number	2
Revision	1
Document Reference	MCW-GEN-CSM-NOT-IBR-000002
Author	Calum Billings
Contact Details	Senior Project Manager: Kiera Wilson – kiera.wilson@scottishpower.com +44 7788 130 401 Senior Metocean Engineer: Alistair Hendry – ahendry@scottishpower.com +44 7823 553 446

SUMMARY

A floating LiDAR buoy, surface metocean equipment buoys and seabed landers have been deployed at two sites to assist with the development of MachairWind Offshore Wind Farm ('the Project'). The floating LiDAR buoy and metocean equipment was deployed between 28th April – 29th April 2023 by Fugro from the Port of Burntisland. The Forth Warrior vessel (Call Sign: 2JHR8) deployed the floating LiDAR and Metocean survey equipment.

Mariners are requested to keep a distance of 500 metres from the Site 1 and Site 2 deployment locations.

ACTIVITY DESCRIPTION

The floating LiDAR buoy, surface metocean equipment buoys and seabed landers have been deployed at two separate locations. The equipment deployed will gather wind and metocean data which will be used to inform the development of the Project.

The Floating LiDAR buoy, Metocean Midi Buoy and Metocean Wavescan Buoy are all surface buoys, tethered to the sea bed with single mooring lines. The Seabed Lander is a frame anchored on the seabed, approximately 1.7 m diameter and 0.6 m high.

The Floating LiDAR buoy, Metocean Midi Buoy and Metocean Wavescan Buoy have light marking characteristics comprising FI (5) Y 20s with a nominal range of 5 nautical miles.

Surface equipment at Site 1 are transmitting their locations via AIS. **Site 2 metocean Wavescan buoy is not currently transmitting its position via AIS.**

Equipment details and mooring designs of the floating LiDAR buoy, metocean buoys and seabed lander are provided in this notice to mariners.

PROGRAMME SCHEDULE

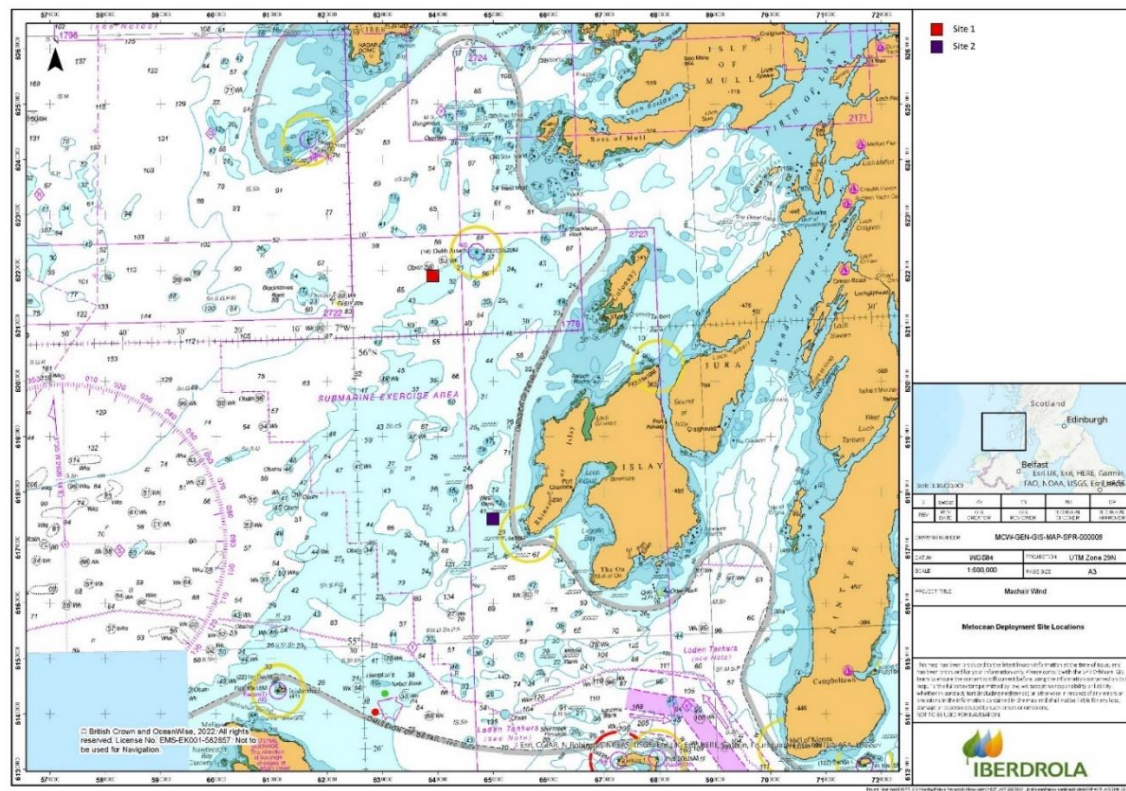
The metocean equipment will initially be deployed for twelve months with an additional twelve months to be decided on the conclusion of the first deployment campaign. An additional notice to mariners will be distributed if an additional twelve month deployment is confirmed.

ACTIVITY AREA

The metocean equipment has been deployed at the following locations:

Location	Equipment	Latitude	Longitude
Site 1	Floating Lidar Buoy	56° 5.919'N	6° 45.893'W
	Metocean Midi Buoy	56° 5.598'N	6° 45.910'W
	Seabed Lander	56° 5.769'N	6° 46.170'W
Site 2	Metocean Wavescan Buoy	55° 41.779'N	6° 36.854'W
	Seabed Lander	55° 42.114'N	6° 36.842'W

The metocean equipment has been deployed at Site 1 and Site 2 as indicated in the figure below:



FISHERIES LIAISON CONTACT DETAILS

The Fisheries Liaison Officers (FLO) will be the following contacts from Brown and May Marine Limited:

FISHERIES LIAISON OFFICER

Name	Zoe Lawrence
Phone Number	07923 138175
Email	Zoe@brownmay.com
Address	C/O Progress Way. Mid Suffolk Business Park, Eye, Suffolk. IP23 7HU

FISHERIES LIAISON OFFICER

Name	Jonathan Keer
Phone Number	07850 604851
Email	jonathan@brownmay.com
Address	C/O Progress Way. Mid Suffolk Business Park, Eye, Suffolk. IP23 7HU

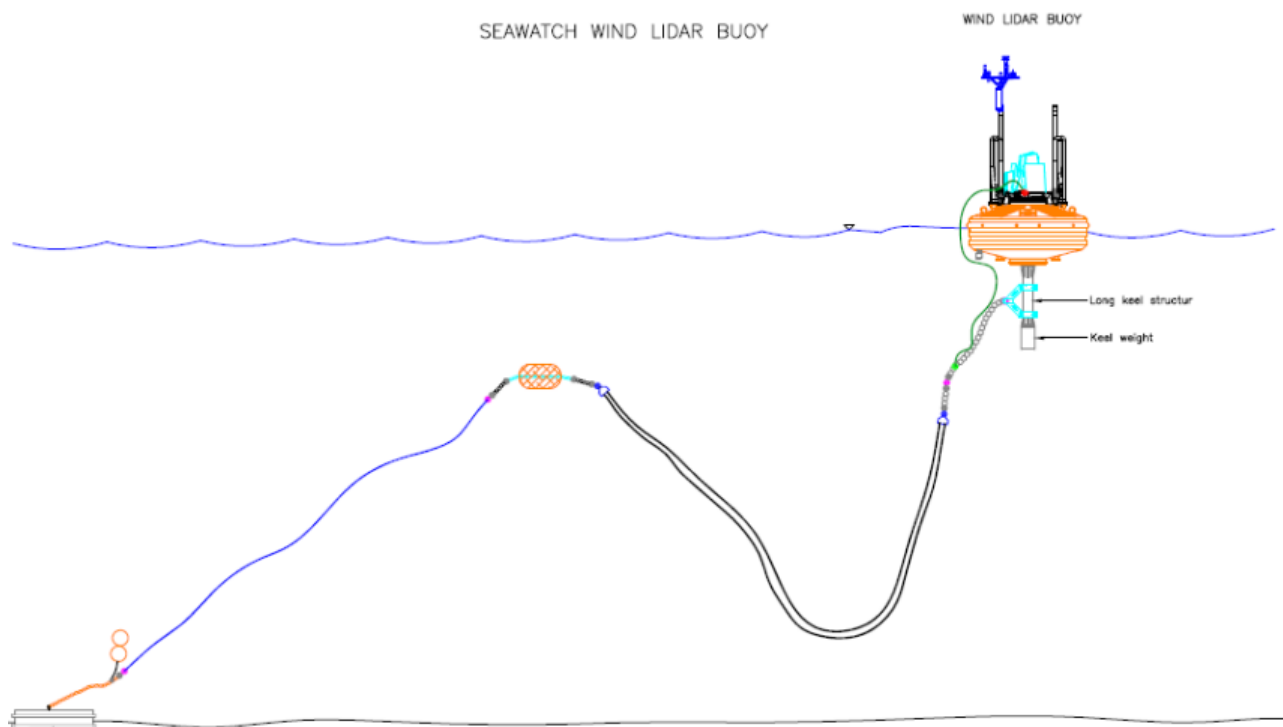
Due to the limited deployment duration, there will not be an offshore fisheries liaison officer aboard the vessel.

EQUIPMENT FIGURES

FLOATING LIDAR BUOY



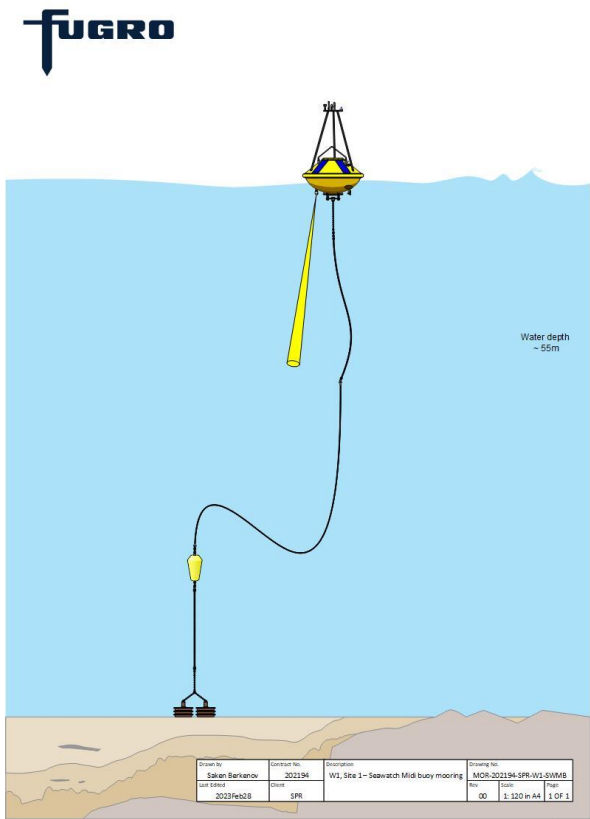
FLOATING LIDAR BUOY MOORING CONFIGURATION



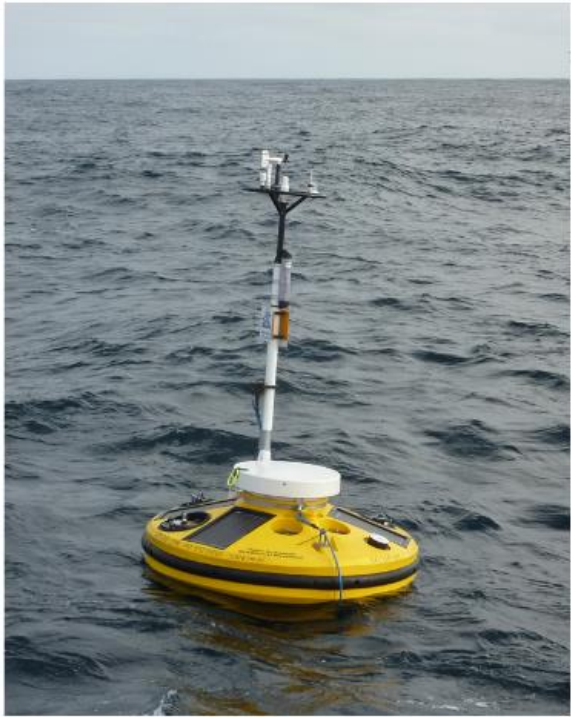
METOCEAN MIDI BUOY



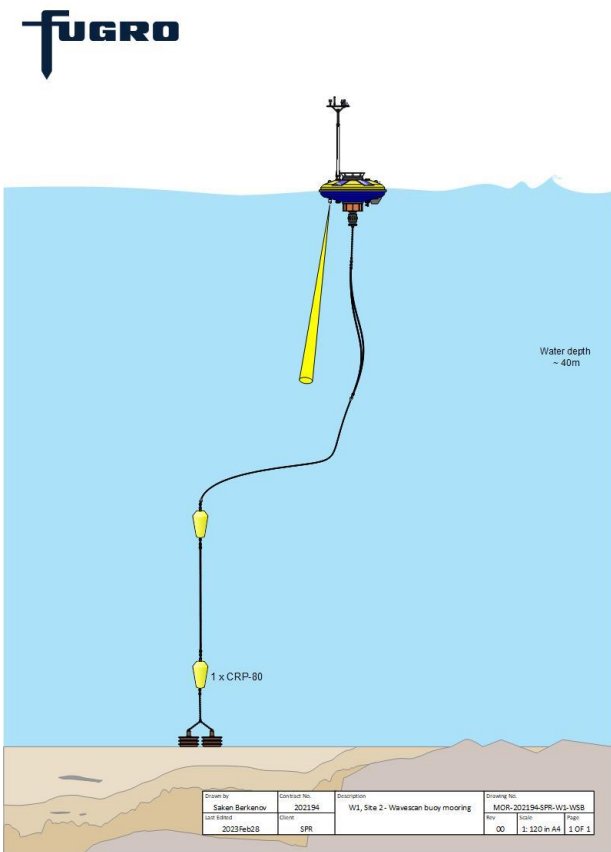
METOCEAN MIDI BUOY MOORING CONFIGURATION



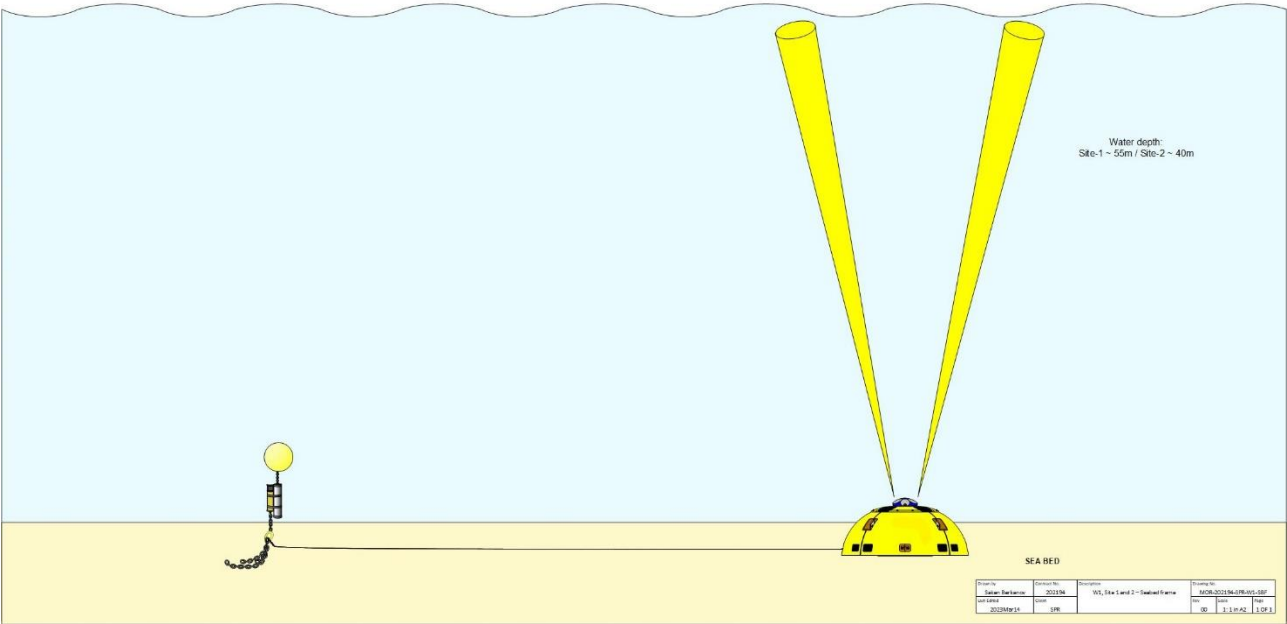
WAVESCAN BUOY



WAVESCAN BUOY MOORING CONFIGURATION



SEABED LANDER



NOTICE TO MARINERS DISTRIBUTION LIST

A list of recipients for the Notice to Mariners is kept by the Project Team. If you wish to be added to this list, please contact the personnel whose contact details are set out on Page 1 of this Notice.