

-890000



**Legend**

Habitat Survey Area

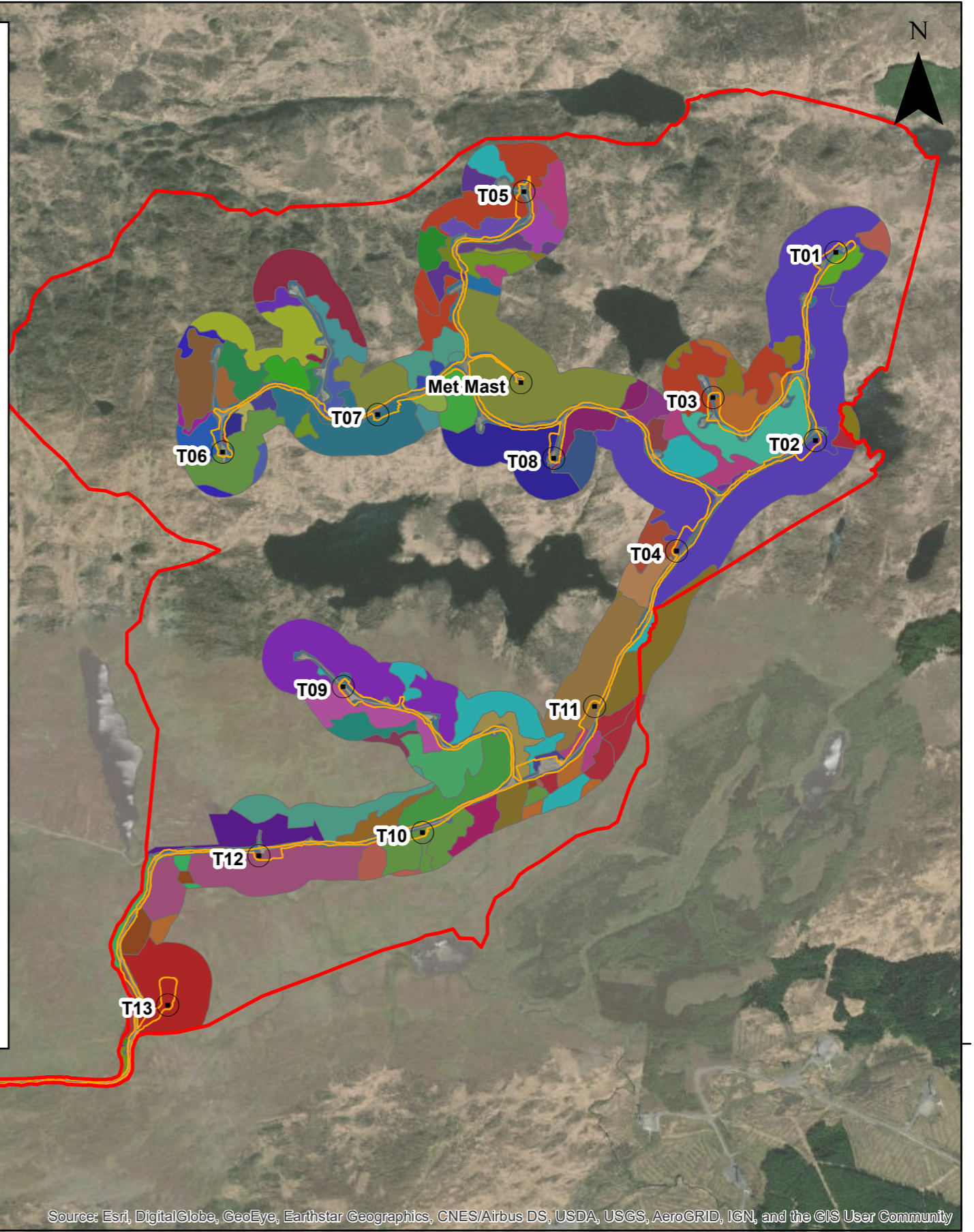
Proposed Turbines

Proposed Infrastructure Extent

**Habitats - Uplands Survey**

- Agrostis capillaris - Festuca ovina upland grassland - Juncus squarrosus UG1d
- Agrostis capillaris - Festuca ovina upland grassland - Sphagnum spp UG1b
- Agrostis capillaris - Festuca ovina upland grassland - UG1a
- Agrostis capillaris - Festuca ovina upland grassland - UG1a / Poor Flush PFLU3
- Agrostis capillaris - Festuca ovina upland grassland - UG1a / Wet Heath WH3
- BB5a Blanket Bog / Wet Heath WH3 / Wet Heath WH4b
- Bare rock
- Blanket Bog BB3
- Blanket Bog BB3 / Degraded Peat DP2 / Upland Hollow HW2i / Bedrock SilcRockN
- Blanket Bog BB3 / Degraded Peat DP2 / Wet Heath WH3 / Upland Hollow HW2i / Bedrock SilcRockN
- Blanket Bog BB3 / Wet Heath WH3
- Blanket Bog BB3 / Wet Heath WH3 / Upland Hollow HW2i
- Blanket Bog BB3 / Wet Heath WH3 / Upland Hollow HW2i / Bedrock SilcRockN
- Blanket Bog BB4
- Blanket Bog BB4 / Wet Heath WH3
- Blanket Bog BB4 / Wet Heath WH3 / Dry Heath DH3 / Dry Heath DH4
- Blanket Bog BB5a
- Blanket Bog BB5a / Blanket Bog BB6a
- Blanket Bog BB5a / Wet Heath WH3
- Blanket Bog BB6a
- Blanket Bog BB6a / Wet Heath WH2 / Cutover Bog
- Blanket Bog BB6a / Wet Heath WH3
- Blanket Bog BB6a / Wet Heath WH3 / Degraded Peat DP2
- Blanket Bog BB6a / Wet Heath WH3 / Montane Heath MH1a / Degraded Peat DP2
- Blanket Bog BB6a / Wet Heath WH3 / Poor Flush PFLU4a
- Cutover Bog
- Degraded Peat DP2
- Gravel / Made
- Molinia caerulea - Anthoxanum odoratum wet grassland UG4
- Montane Heath MH1a
- Montane Heath MH1a / Blanket Bog BB4 / Wet Heath WH2
- Montane Heath MH1a / Blanket Bog BB4 / Wet Heath WH3
- Montane Heath MH1a / Blanket Bog BB5a
- Montane Heath MH1a / Blanket Bog BB6a / Wet Heath WH1a
- Montane Heath MH1a / Blanket Bog BB6a / Wet Heath WH3
- Montane Heath MH1a / Degraded Peat DP2
- Montane Heath MH1a / Montane Heath MH1b
- Montane Heath MH1a / Poor Flush PFLU3
- Montane Heath MH1a / Upland Hollow HW1i
- Montane Heath MH1a / Wet Grassland UG4
- Montane Heath MH1a / Wet Heath WH2 / Wet Heath WH3
- Montane Heath MH1a / Wet Heath WH3
- Montane Heath MH1a / Wet Heath WH3 / Agrostis capillaris - Festuca ovina upland grassland - UG1a
- Montane Heath MH1a / Wet Heath WH3 / Degraded Peat DP2
- Montane Heath MH1a / Wet Heath WH3 / Purple Moor-grass Sweet Vernal-grass Wet Grassland UG4
- Montane Heath MH1a / Wet Heath WH3 / Wet Grassland UG4
- Montane Heath MH1a / Wet Heath WH4a
- Montane Heath MH1b / Agrostis capillaris - Festuca ovina upland grassland - UG1d

- Montane Heath MH1b / Wet Heath WH3
- Montane Heath MH1b / Wet Heath WH3 / Degraded Peat DP2
- Montane Heath MH1b / Wet Heath WH3 / Poor Flush PFLU4a
- Montane Heath MH2 / Agrostis capillaris - Festuca ovina upland grassland - UG1a
- Montane Heath MH2 / UG1a and UG4 Upland Grasslands
- Montane Heath MH4 / Cutover Bog
- Montane Heath MH4 / Wet Heath WH2 / Cutover Bog
- Montane Heath MH4 / Wet Heath WH3
- Montane Heath MH4 / Wet Heath WH3 / Wet Heath WH4a
- Open Water OpenDA
- Poor Flush PFLU1
- Poor Flush PFLU2
- Poor Flush PFLU3
- Poor Flush PFLU3 / Agrostis capillaris - Festuca ovina upland grassland - UG1a
- Poor Flush PFLU3 / Wet Heath WH3
- Upland Hollow HW2i / Cutover Bog
- Wet Heath WH2
- Wet Heath WH2 / Wet Heath WH3 / Purple Moor-grass Sweet Vernal-grass Wet Grassland UG4
- Wet Heath WH3
- Wet Heath WH3 / Agrostis capillaris - Festuca ovina upland grassland - UG1a
- Wet Heath WH3 / Blanket Bog BB6a / Degraded Peat DP2
- Wet Heath WH3 / Degraded Peat DP2
- Wet Heath WH3 / Dry Heath DH3
- Wet Heath WH3 / Poor Flush PFLU3
- Wet Heath WH3 / Poor Flush PFLU4a
- Wet Heath WH3 / UG1a and UG4 Upland Grasslands
- Wet Heath WH3 / Upland Annex Running Water RunUA
- Wet Heath WH3 / Wet Heath WH4b
- Wet Heath WH3 / Wet Heath WH4b / Agrostis capillaris - Festuca ovina upland grassland - UG1a
- Wet Heath WH4a
- Wet Heath WH4b
- Wet Heath WH4b / Agrostis capillaris - Festuca ovina upland grassland - UG1a
- Wet Heath WH4b / Poor Flush PFLU3



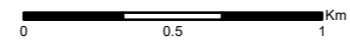
Source: Esri, DigitalGlobe, GeoEye, Earthstar Geographics, CNES/Airbus DS, USDA, USGS, AeroGRID, IGN, and the GIS User Community

-890000



A	17/12/19	RN	First Issue.
Rev	Date	By	Comment

1:25,336  
Scale @ A3



Source: Esri, DigitalGlobe, GeoEye, Earthstar Geographics, CNES/Airbus DS, USDA, USGS, AeroGRID, IGN, and the GIS User Community

**Barnesmore Windfarm Repowering**

Upland Habitat Survey  
Primary Upland Habitats

Drg No	EIAR Chap 6 Biodiversity	
Rev	A	Datum: TM65
Date	17/12/19	Projection: TM
Figure	6.10	