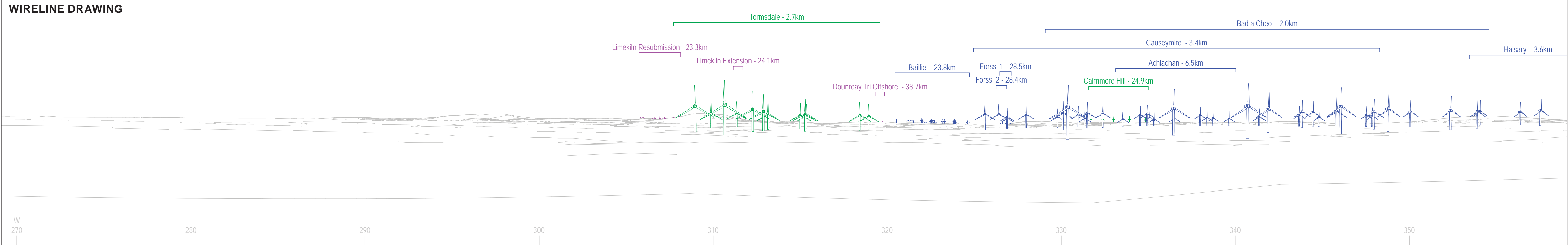


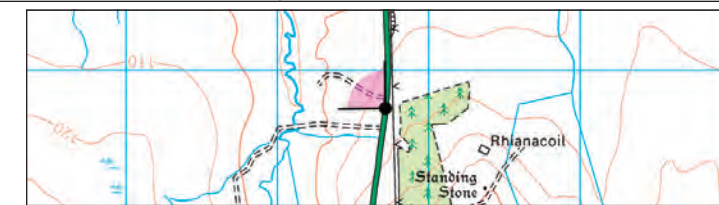


BASELINE PHOTOGRAPH

THIS IMAGE PROVIDES LANDSCAPE AND VISUAL CONTEXT ONLY



**Hollandmey Renewable Energy Development**  
**Figure : 7.32-NS-01-CU**  
**Viewpoint 19: A9 near Rangag**  
**Baseline & Cumulative Wireline: Panel 1**



<b>Notes:</b> 1) This visualisation is a planar projection panorama. View flat at a comfortable arm's length. 2) This data has been output directly from the wireline model; it ignores screening effects of woodland and other intervening objects. 3) All directions given as bearings relative to Grid North (BNQ). 4) Location map scale: 1:50,000.  Contains Ordnance Survey data © Crown copyright and database right 2023 © Crown copyright. All rights reserved. 2023 Licence number: 100023565	<b>Viewpoint Information:</b> Grid Reference: 317715E 945752N Ground Height: 117m AOD Direction of Centre of View: 3 044.10° Horizontal Field of View: 90° Vertical Field of View: 14.2° Principal Distance: 522mm	<b>Photography Information:</b> Camera: Nikon D810 36.3 Lens: 50mm Fixed Focal Length Camera Height: 1.5m Photography Date: 09/08/2020 Photography Time: 16:55	<b>Hollandmey Layout Information:</b> Layout: hollandmey.wfl Hub Height: 84m Height to Blade Tip: 149.9m Nearest Visible Turbine: T4 @ 25063m Number of Sets of Tips Visible: 2 10 Number of Hubs Visible: 2 10	<b>Wireline Key:</b> 	Date July 2023	By DT
					Image Size 820 x 130mm	OA SPB
					Paper Size 840 x 297mm	Rev -
					0163-NatureScot-visuals-cumulative-update.indd	





BASELINE PHOTOGRAPH

THIS IMAGE PROVIDES LANDSCAPE AND VISUAL CONTEXT ONLY

WIRELINE DRAWING

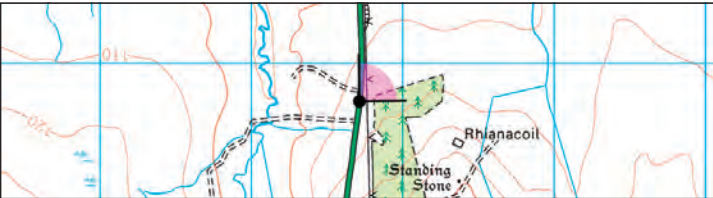


Hollandmey Renewable Energy Development

Figure : 7.32-NS-02-CU

Viewpoint 19: A9 near Rangag

Baseline & Cumulative Wireline: Panel 2



Notes:

- 1) This visualisation is a planar projection panorama. View flat at a comfortable arm's length.
- 2) This data has been output directly from the wireline model; it ignores screening effects of woodland and other intervening objects.
- 3) All directions given as bearings relative to Grid North (BNG).
- 4) Location map scale: 1:50,000.

Contains Ordnance Survey data © Crown copyright and database right 2023  
© Crown copyright. All rights reserved. 2023 Licence number: 100023565

Viewpoint Information:

Grid Reference: 317715E 945752N  
Ground Height: 117m AOD  
Direction of Centre of View: <sup>3</sup> 044.10°  
Horizontal Field of View: 90°  
Vertical Field of View: 14.2°  
Principal Distance: 522mm

Photography Information:

Camera: Nikon D810 36.3  
Lens: 50mm Fixed Focal Length  
Camera Height: 1.5m  
Photography Date: 09/08/2020  
Photography Time: 16:55

Hollandmey Layout Information:

Layout: hollandmey.wfl  
Hub Height: 84m  
Height to Blade Tip: 149.9m  
Nearest Visible Turbine: T4 @ 25063m  
Number of Sets of Tips Visible: <sup>2</sup> 10  
Number of Hubs Visible: <sup>2</sup> 10

Wireline Key:

- Proposed Development
- Operational / Under Construction
- Consented
- Application Submitted

Date	July 2023	By	DT
Image Size	820 x 130mm	OA	SPB
Paper Size	840 x 297mm	Rev	-
0163-NatureScot-visuals-cumulative-update.indd			