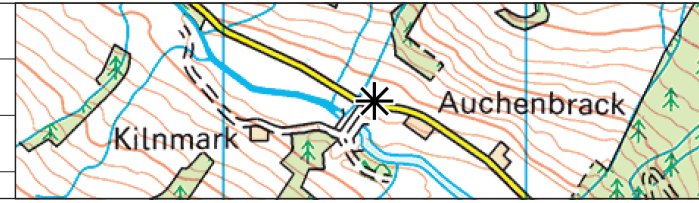




PHOTOMONTAGE

VIEW FLAT AT A COMFORTABLE ARM'S LENGTH
IF VIEWING THIS IMAGE ON A SCREEN, ENLARGE TO FULL SCREEN HEIGHT

Date	By
July 2020	SPB
Image Size	QA
820 x 260mm	DT
Paper Size	Rev
840 x 297mm	-
EUC1-exhibition-montages.indd	



Notes:
 1) This visualisation is a planar projection panorama. View flat at a comfortable arm's length.
 2) This data has been output directly from the wireline model. It ignores screening effects of woodland and other intervening objects.
 3) All directions given as bearings relative to Grid North (BNG).
 4) Location map scale: 1:25,000

Contains Ordnance Survey data © Crown copyright and database right 2020
© Crown copyright. All rights reserved. 2020 Licence number: 100020565

Viewpoint Information:
 Grid Reference: 276501E 596582N
 Ground Height: 194.8m AOD
 Direction of Centre of View: 3 299.00°
 Horizontal Field of View: 53.5°
 Vertical Field of View: 18.2°
 Principal Distance: 812.5mm

Photography Information:
 Camera: Canon EOS 5D Mk II
 Lens: 50mm Fixed Focal Length
 Camera Height: 1.5m
 Photography Date: 25/06/2020
 Photography Time: 11:39

Euchanhead Layout Information:
 Layout: euchanhead.wfl
 Hub Height: 155
 Height to Blade Tip: 230
 Nearest Visible Turbine: T21 @ 6042m
 Number of Sets of Tips Visible: 3
 Number of Hubs Visible: 2 4



Euchanhead Renewable Energy Development
Viewpoint 7: Minor road in upper Shinnel Water, near Auchenbrack
PHOTOMONTAGE VISUALISATION 7