

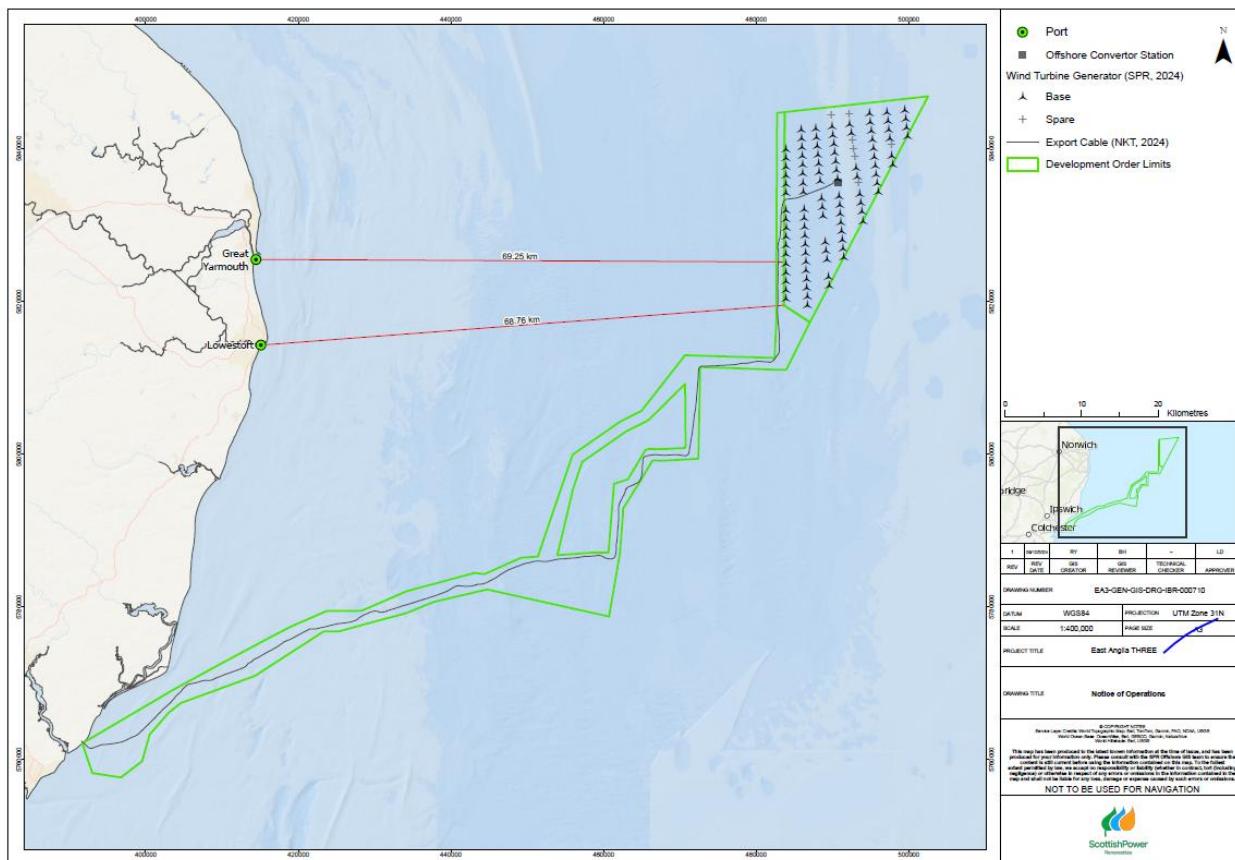
Notice Number:	027 - 2025
Issue Date:	07/07/2025
<p>This notice will be updated and issued weekly, giving information of any operations carried out in relation to East Anglia THREE offshore windfarm in the previous 7 days and any ongoing/planned operations for the next 7 days. Any notice to mariners issued by East Anglia THREE are available on Scottish Power Renewables website www.scottishpowerrenewables.com and the Kingfisher bulletin https://kingfisherbulletin.org/</p>	

Weekly Notice of Operations

Prepared by:	Checked by:	Approved by:
Marine Coordinator	Lead Marine Coordinator	Offshore Installation Manager

1. PROJECT INTRODUCTION

East Anglia THREE will be a large offshore wind farm, located 69 km off the Norfolk coast. With a projected capacity of approximately 1400MW, the wind farm shall supply electricity to approximately one million UK homes. Onshore construction for the project started in July 2022. Offshore construction has commenced.



2. SUMMARY OF NOTICE TO MARINERS

EA3 NTM (Notice to Mariners) Tracker

NTM No*	NTM Name	Start Date	End Date	Status	Comments/Workscope	Distribution Date (open)
2024						
048/2024	Commencement of Construction of EA3 OWF	01/11/2024	N/A	Open	EA3 OWF Construction	25/10/2024
2025						
005/2025	Maintenance and Redeployment of EA3 Weather Buoy	22/01/2025	N/A	Open	Maintenance of EA3 Weather Buoy	22/01/2025
009/2025	Notification of Guard Vessel	01/03/2025	N/A	Open	Guard Vessel	19/02/2025
012/2025	Monopile and Transition Piece Installation Campaign	27/03/2025	Q1 2026	Open	Monopile and TP Installation Campaign	14/03/2025
017/2025	CTV Rebellion	04/01/2025	TBC	Open	CTV Operations	26/03/2025
020/2025	MP TP Bolting And Grouting	25/04/2025	TBC	Open	MP TP Bolting And Grouting	04/07/2025
023/2025	Export cable dredging(Nearshore)	15/05/2025	31/07/2025	Open	Export cable dredging	29/04/2025
024/2025	Confirmed Unexploded Ordnance	30/04/2025	TBC	Open	cUXO	30/04/2025
033/2025	Export Cable Installation	14/06/2025	TBC	Open	Export Cable Installation	31/05/2025
035/2025	Marine Mammal Monitoring-Passive Acoustic Monitoring Stations	12/06/2025	TBC	Open	PAM Stations	12/06/2025
036/2025	Wave Rider Buoy	12/06/2025	TBC	Open	Wave Rider Buoy	12/06/2025
037/2025	Pre-Installation Survey Campaign	13/06/2025	TBC	Open	Pre-Installation Survey Campaign	13/06/2025
039/2025	Export Cable Installation (Assisting Vessels)	03/07/2025	TBC	Open	Export Cable Installation	03/07/2025
040/2025	Export Cable Corridor Guard Vessel	20/05/2025	TBC	Open	Ecc Guard Vessels	07/07/2025
041/2025	Aids to Navigation - Installation of Demarcation Buoys	13/01/2025	N/A	Open	Updated status of Demarcation Buoys	07/07/2025

2.1. AIDS TO NAVIGATION STATUS

The following aids to navigation are deployed within the East Anglia THREE offshore windfarm:

Buoy Type	ID	Deployed Latitude	Deployed Longitude	Buoy Characteristic
EA3 North 1 Buoy	N1	52° 45.472'N	002° 50.962'E	<ul style="list-style-type: none"> • Pillar shaped with a North cardinal shaped top mark • Quick Flashing Light Character
EA3 North 2 Buoy	N2	52° 45.917'N	003° 00.151'E	<ul style="list-style-type: none"> • Pillar shaped with a North cardinal shaped top mark • Very Quick Flashing Light Character
EA3 East 1 Buoy	E1	52° 43.677'N	003° 00.776'E	<ul style="list-style-type: none"> • Pillar shaped with a East cardinal shaped top mark • Quick Flashing (3) 10s Light Character
EA3 East 2 Buoy	E2	52° 38.166'N	002° 56.532'E	<ul style="list-style-type: none"> • Pillar shaped with a East cardinal shaped top mark • Very Quick Flashing (3) 5s Light Character
EA3 East 3 Buoy	E3	52° 32.917'N	002° 51.558'E	<ul style="list-style-type: none"> • Pillar shaped with a East cardinal shaped top mark • Quick Flashing (3) 10s Light Character
EA3 South 1 Buoy	S1	52° 31.148'N	002° 48.252'E	<ul style="list-style-type: none"> • Pillar shaped with a South cardinal shaped top mark • Very Quick Flashing (6) +1 long flash 10s Light Character
EA3 West 1 Buoy	W1	52°31.814'N	002°45.153'E	<ul style="list-style-type: none"> • Pillar shaped with a West cardinal shaped top mark • Quick Flashing (9) 15s Light Character
EA3 West 2 Buoy	W2	52° 37.466'N	002°44.872'E	<ul style="list-style-type: none"> • Pillar shaped with a West cardinal shaped top mark • Very Quick Flashing (9) 10s Light Character
EA3 West 3 Buoy	W3	52°43.123'N	002°45.093'E	<ul style="list-style-type: none"> • Pillar shaped with a West cardinal shaped top mark • Quick Flashing (9) 15s Light Character
EA3 Special 1 Buoy	SP1	52° 45.708'N	002° 55.556'E	<ul style="list-style-type: none"> • Pillar shaped with a yellow 'X' shaped top mark • Flashing yellow 5s Light Character
EA3 Special 2 Buoy	SP2	52° 40.790'N	002° 59.023'E	<ul style="list-style-type: none"> • Pillar shaped with a yellow 'X' shaped top mark • Flashing yellow 5s Light Character
EA3 Special 3 Buoy	SP3	52° 35.542'N	002° 54.044'E	<ul style="list-style-type: none"> • Pillar shaped with a yellow 'X' shaped top mark • Flashing yellow 5s Light Character
EA3 Special 4 Buoy	SP4	52°34.642'N	002°45.165'E	<ul style="list-style-type: none"> • Pillar shaped with a yellow 'X' shaped top mark • Flashing yellow 5s Light Character
EA3 Special 5 Buoy	SP5	52°40.295'N	002°44.849'E	<ul style="list-style-type: none"> • Pillar shaped with a yellow 'X' shaped top mark • Flashing yellow 5s Light Character
EA3 Special 6 Buoy	SP6	52°44.640'N	002°47.484'E	<ul style="list-style-type: none"> • Pillar shaped with a yellow 'X' shaped top mark • Flashing yellow 5s Light Character
EA3 Weather Monitoring Buoy North	NWB	52°44.841'N	002°58.611'E	<ul style="list-style-type: none"> • Flash sequence – Fl (5) 20s. Amber light, 3nm visibility
EA3 Weather Monitoring Buoy South	SWB	52°32.880'N	002°46.961'E	<ul style="list-style-type: none"> • Flash sequence – Fl (5) 20s. Amber light, 3nm visibility
Wave Rider buoy	WRB	52°39.166'N	002°52.332'E	<ul style="list-style-type: none"> • Flashing (5) 20s. Yellow light, 4nm visibility.

For installed asset light characteristics see section [6](#).

3. WORKS CARRIED OUT IN THE LAST 7 DAYS

3.1. Trym

- **Export Cable route Clearance and inspections:** Trym has continued with route clearance and inspection operations along the East Anglia THREE export cable corridor.
- **Demobilisation:** Trym completed export cable route clearance and inspection operations and has demobilised from the project.

3.2. GV Tess

- **Guard Vessel:** GV Tess has continued guard vessel duties within the East Anglia THREE boundary of the Offshore Windfarm Array.

3.3. Norside Supporter

- **Foundation Bolting and Grouting Campaign:** The Norside Supporter has continued with foundation bolting and grouting operations within the East Anglia THREE boundary of the Offshore Windfarm Array.

3.4. Seaway Ventus

- **Monopile And Transition Piece Installation Campaign:** Seaway Ventus returned to the East Anglia THREE boundary of the Offshore Windfarm Array on the 06/07/2025 to continue with the monopile and transition piece installation campaign.

3.5. Abeko Server 2

- **Export Cable Dredging (Nearshore):** The Abeko Server 2 has continued with HDD excavation operations along the East Anglia THREE Export Cable Corridor (nearshore).

3.6. Afon Alaw

- **Export Cable Dredging (Nearshore):** The Afon Alaw has continued to support the Abeko Server 2 during HDD excavation operations along the East Anglia THREE Export Cable Corridor (nearshore).

3.7. Seafast Don

- **Export Cable Dredging (Nearshore):** The Seafast Don has continued with survey works along the East Anglia THREE Export Cable Corridor (nearshore), the vessel has also conducted crew transfer operations between the Port of Harwich, Abeko Server 2 and the Isle of Jura.
- **Export Cable Installation:** The Seafast Don has conducted daily crew transfer operations between the port of Harwich and NKT Victoria.

3.8. Isle of Jura

- **HDD Pull (Nearshore):** The Isle of Jura has assisted the NKT Victoria during export cable float in operations within the East Anglia THREE export cable corridor (nearshore).

3.9. GV Reul Na Mara

- **Export Cable Guard Vessel:** GV Reul Na Mara has continued with Guard Vessel duties along the East Anglia THREE export cable corridor.

3.10. GV Resilient

- **Export Cable Guard Vessel:** GV Resilient has continued with Guard Vessel duties along the East Anglia THREE export cable corridor.

3.11. GV Adventure

- **Export Cable Guard Vessel:** GV Adventure mobilised from the port of Fraserburgh and has commenced Guard Vessel duties along the East Anglia THREE export cable corridor.

3.12. THV Galatea

- **Demarcation Buoy Relocation and Maintenance:** THV Galatea relocated **EA3 Special 4 buoy and EA3 West 2 buoy**. THV Galatea also performed maintenance on the **EA3 East 3 buoy**. The vessel completed her work scope with East Anglia THREE and demobilised from the project.

3.13. Rebellion

- **Crew Transfer Vessel:** The NR Rebellion has continued with crew transfer duties as and when required within the East Anglia THREE Offshore Windfarm Array.

3.14. Geosurveyor XI

- **Pre-installation Survey Campaign Two:** Geosurveyor XI has mobilised in the port of Lowestoft in preparation or conducting pre-installation surveys within the East Anglia THREE boundary of the offshore windfarm array.

3.15. NKT Victoria

- **Export Cable Installation Vessel:** NKT Victoria has commenced export cable installation operations within the East Anglia THREE export cable corridor. Four RHIBs and one crew transfer vessel have mobilised from the port of Harwich to assist with cable float in operations (near shore).

NKT Victoria has also utilised four of her own work boats to assist with export cable float in operations.

NKT Victoria Support RHIBs, CTV & Workboats		
Name of Vessel	Call Sign	MMSI
CRC CANBERRA	2EDS7	235084237
CRC TRISTAR	2FQW9	235093497
CRC DAKOTA	2FQW8	235093496
CRC PHANTOM	2FBM3	235089863
CRC Voyager (CTV)	MBZZ7	232011764
NKT Victoria Workboat 1	N/A	972570477
NKT Victoria Workboat 2	N/A	972603298
NKT Victoria Workboat 3	N/A	972601669
NKT Victoria Workboat 4	N/A	972570478

4. PLANNED OPERATIONS FOR NEXT 7 DAYS

4.1. GV Tess

- **Guard Vessel:** GV Tess will remain within the East Anglia THREE boundary of the Offshore Windfarm Array and continue with guard vessel duties.

4.2. Seaway Ventus

- **Monopile And Transition Piece Installation Campaign:** Seaway Ventus will continue with the monopile and transition piece installation campaign.
- **Crew Change:** Seaway Ventus is expected to conduct a crew change on 10/07/2025 via helicopter.
- **Port Call:** Seaway Ventus will make a port call to Vlissingen to conduct loading operations and complete a crew change, before returning to the East Anglia THREE Offshore Windfarm Array.

4.3. NR Rebellion

- **Crew Transfer Vessel:** The NR Rebellion will continue with crew transfer duties as and when required within the East Anglia THREE offshore windfarm array.

4.4. Norside Supporter

- **Foundation Bolting and Grouting Campaign:** The Norside Supporter will continue with foundation bolting and grouting operations within the East Anglia THREE boundary of the Offshore Windfarm Array.

4.5. Abeko Server 2

- **Export Cable Dredging (Nearshore):** The Abeko Server 2 will continue with HDD excavation operations along the East Anglia THREE Export Cable Corridor (nearshore).

4.6. Afon Alaw

- **Export Cable Dredging (Nearshore):** The Afon Alaw will continue to support the Abeko Server 2 during HDD excavation operations along the East Anglia THREE Export Cable Corridor (nearshore).

4.7. Seafast Don

- **Export Cable Installation:** Seafast Don will continue with nearshore survey works along the East Anglia THREE Export cable corridor and will conduct daily crew transfer operations between the port of Harwich, The Isle of Jura and NKT Victoria.

4.8. Isle of Jura

- **HDD Pull (Nearshore):** Isle of Jura will continue to assist the NKT Victoria during cable installation operations as well as HDD diving operations.

4.9. GV Reul Na Mara

- **Export Cable Guard Vessel:** GV Reul Na Mara will continue with guard vessel duties along the East Anglia THREE export cable corridor.

4.10. GV Adventure

- **Export Cable Guard Vessel:** GV Adventure will continue with guard vessel duties along the East Anglia THREE export cable corridor.

4.11. GV Resilient

- **Export Cable Guard Vessel:** GV Resilient will continue with guard vessel duties along the East Anglia THREE export cable corridor.

4.12. Geosurveyor XI

- **Pre-installation Survey Campaign Two:** Geosurveyor XI will conduct a pre-installation survey within the East Anglia THREE boundary of the offshore windfarm array.

4.13. NKT Victoria

- **Export Cable Installation:** The NKT Victoria will continue with export cable installation operations within the East Anglia THREE export cable corridor.
- **Support Vessels** – Four NKT Victoria Workboats, up to seven RHIBs and one crew transfer vessel are expected to assist the NKT Victoria during the initial stages of export cable installation:

NKT Victoria Support RHIBs, CTV & Workboats		
Name of Vessel	Call Sign	MMSI
CRC VIPER	2EDS8	235084238
CRC CANBERRA	2EDS7	235084237
CRC TRISTAR	2FQW9	235093497
CRC TYPHOON	2DPX6	235081064
CRC DAKOTA	2FQW8	235093496
CRC CATALINA	2FQW6	235093494
CRC PHANTOM	2FBM3	235089863
CRC Voyager (CTV)	MBZZ7	232011764
NKT Victoria Workboat 1	N/A	972570477
NKT Victoria Workboat 2	N/A	972603298
NKT Victoria Workboat 3	N/A	972601669
NKT Victoria Workboat 4	N/A	972570478

5. PROJECT CONTACT DETAILS

The following contact can provide relevant information if required. Please note that any specific queries can be addressed to the relevant shore-based representatives.

5.1. Site Management

Marine Coordinator	
Name	EA3 MCC
Contact Telephone Number	Tel +44 (0) 1416144821. Mob +44 (0) 7375 865 478
Email Address	ea3_mcc@scottishpower.com
Address	Orbis Energy, Wilde Street, Lowestoft, NR32 1XH

Offshore Installation Manager	
Name	EA3 OIM
Contact Telephone Number	+44 (0) 7960 608 666
Email Address	ea3_oim@scottishpower.com
Address	Orbis Energy, Wilde Street, Lowestoft, NR32 1XH

5.2. Emergency Contact

Emergency Contact	
Name	EA3 MCC
Contact Telephone Number	Emergency Tel +44 (0) 1416144822
Email Address	ea3_mcc@scottishpower.com
Address	Orbis Energy, Wilde Street, Lowestoft, NR32 1XH

5.3. Marine Operations

Marine Operations	
Name	Anthony Milligan
Contact Telephone Number	Tel +44 (0) 7760 880723
Email Address	amilligan@scottishpower.com
Address	Scottish Power HQ 320 St Vincent Street, Glasgow, G2 5AD

6. INSTALLATION PROGRESS


The following table shows the East Anglia THREE planned installation locations and status:


ID	Structure	Latitude	Longitude	MP Installed	TP Installed	Light Characteristic
A02	WTG	52° 32.196' N	002° 45.780' E	N	N	
A03	WTG	52° 32.804' N	002° 45.748' E	N	N	
A04	WTG	52° 33.437' N	002° 45.773' E	N	N	
A05	WTG	52° 34.057' N	002° 45.770' E	N	N	
A06	WTG	52° 34.677' N	002° 45.767' E	N	N	
A07	WTG	52° 35.319' N	002° 45.740' E	N	N	
A08	WTG	52° 35.918' N	002° 45.760' E	N	N	
A09	WTG	52° 36.551' N	002° 45.756' E	N	N	
A10	WTG	52° 37.169' N	002° 45.765' E	N	N	
A11	WTG	52° 37.779' N	002° 45.750' E	N	N	
A12	WTG	52° 38.399' N	002° 45.747' E	N	N	
A14	WTG	52° 39.640' N	002° 45.740' E	N	N	
A15	WTG	52° 40.260' N	002° 45.737' E	N	N	
A16	WTG	52° 40 880' N	002° 45.733' E	N	N	
A17	WTG	52° 41 500' N	002° 45 730' E	N	N	
A18	WTG	52° 42. 121' N	002° 45.727' E	19/06/2025	20/06/2025	FL Y 2.5s light 360° Range 2nm.
A19	WTG	52° 42.741' N	002° 45.723' E	N	N	
B01	WTG	52° 31.688' N	002° 48.252' E	N	N	
B02	WTG	52° 32.332' N	002° 48.231' E	N	N	
B03	WTG	52° 32.943' N	002° 48.176' E	N	N	
B04	WTG	52° 33.563' N	002° 48.137' E	N	N	
B05	WTG	52° 34.151' N	002° 48.071' E	N	N	
B06	WTG	52° 34 802' N	002° 48 061' E	N	N	
B07	WTG	52° 35.436' N	002° 48.022' E	N	N	
B08	WTG	52° 36.043' N	002° 47.984' E	N	N	
B09	WTG	52° 36.662' N	002° 47.945' E	N	N	
B10	WTG	52° 37.282' N	002° 47.908' E	29/04/2025	30/04/2025	FL Y 2.5s light 360° Range 2nm.
B11	WTG	52° 37.892' N	002° 47.831' E	N	N	
B12	WTG	52° 38.522' N	002° 47.830' E	N	N	
B14	WTG	52° 39.761' N	002° 47.753' E	N	N	
B15	WTG	52° 40.381' N	002° 47.715' E	N	N	


B16	WTG	52° 41.002' N	002° 47.677' E	N	N	
B17	WTG	52° 41.621' N	002° 47.638' E	N	N	
B18	WTG	52° 42.241' N	002° 47.599' E	06/07/2025	07/07/2025	FL Y 2.5s light 360° Range 2nm.
B19	WTG	52° 42.861' N	002° 47.561' E	21/05/2025	22/05/2025	FL Y 2.5s light 360° Range 2nm.
B20	WTG	52° 43.481' N	002° 47.522' E	09/06/2025	09/06/2025	FL Y 2.5s light 360° Range 2nm.
B21	WTG	52° 44.123' N	002° 47.482' E	N	N	
C03	WTG	52° 33.093' N	002° 50.760' E	N	N	
C04	WTG	52° 33.708' N	002° 50.671' E	N	N	
C06	WTG	52° 34.944' N	002° 50.493' E	18/04/2025	18/04/2025	FL Y 2.5s light 360° Range 2nm.
C07	WTG	52° 35.562' N	002° 50.404' E	N	N	
C08	WTG	52° 36.180' N	002° 50.314' E	N	N	
C11	WTG	52° 38.034' N	002° 50.046' E	N	N	
C12	WTG	52° 38.651' N	002° 49.956' E	N	N	
C13	WTG	52° 39.269' N	002° 49.867' E	N	N	
C15	WTG	52° 40.505' N	002° 49.687' E	N	N	
C16	WTG	52° 41.102' N	002° 49.570' E	29/06/2025	30/06/2025	FL Y 2.5s light 360° Range 2nm.
C17	WTG	52° 41.741' N	002° 49.508' E	N	N	
C18	WTG	52° 42.359' N	002° 49.418' E	N	N	
C19	WTG	52° 42.977' N	002° 49.328' E	N	N	
C20	WTG	52° 43.595' N	002° 49.238' E	N	N	
C21	WTG	52° 44.213' N	002° 49.148' E	01/07/2025	02/07/2025	FL Y 2.5s light 360° Range 2nm.
D06	WTG	52° 35.087' N	002° 52.463' E	N	N	
D07	WTG	52° 35.695' N	002° 52.362' E	N	N	
D08	WTG	52° 36.313' N	002° 52.280' E	21/04/2025	22/04/2025	FL Y 2.5s light 360° Range 2nm.
D09	WTG	52° 36.932' N	002° 52.199' E	N	N	
D10	WTG	52° 37.550' N	002° 52.118' E	26/05/2025	27/05/2025	FL Y 2.5s light 360° Range 2nm.
D11	WTG	52° 38.168' N	002° 52.037' E	N	N	
D12	WTG	52° 38.786' N	002° 51.955' E	N	N	
D13	WTG	52° 39.405' N	002° 51.874' E	02/05/2025	03/05/2025	FL Y 2.5s light 360° Range 2nm.
D15	WTG	52° 40.641' N	002° 51.696' E	N	N	
D16	WTG	52° 41.258' N	002° 51.592' E	N	N	
D17	WTG	52° 41.875' N	002° 51.487' E	N	N	


D18	WTG	52° 42.492' N	002° 51.382' E	N	N	
D19	WTG	52° 43.109' N	002° 51.277' E	N	N	
D20	WTG	52° 43.726' N	002° 51.172' E	N	N	
D21	WTG	52° 44.343' N	002° 51.067' E	11/06/2025	11/06/2025	FL Y 2.5s light 360° Range 2nm.
E10	WTG	52° 37.691' N	002° 54.697' E	N	N	
E11	WTG	52° 38.317' N	002° 54.545' E	N	N	
E12	WTG	52° 38.982' N	002° 54.439' E	N	N	
E13	WTG	52° 39.571' N	002° 54.296' E	N	N	
E15	WTG	52° 40.799' N	002° 54.010' E	N	N	
E16	WTG	52° 41.413' N	002° 53.867' E	N	N	
E20	WTG	52° 43.870' N	002° 53.293' E	21/06/2025	22/06/2025	FL Y 2.5s light 360° Range 2nm.
E21	WTG	52° 44.487' N	002° 53.108' E	N	N	
F13	WTG	52° 39.712' N	002° 56.434' E	N	N	
F14	WTG	52° 40.328' N	002° 56.320' E	N	N	
F15	WTG	52° 40.945' N	002° 56.206' E	N	N	
F16	WTG	52° 41.561' N	002° 56.092' E	N	N	
F17	WTG	52° 42.178' N	002° 55.978' E	N	N	
F18	WTG	52° 42.791' N	002° 55.906' E	N	N	
F19	WTG	52° 43.411' N	002° 55.750' E	N	N	
F20	WTG	52° 44.027' N	002° 55.636' E	N	N	
F21	WTG	52° 44.644' N	002° 55.522' E	N	N	
F22	WTG	52° 45.260' N	002° 55.408' E	N	N	
G16	WTG	52° 41.699' N	002° 58.142' E	N	N	
G17	WTG	52° 42.315' N	002° 58.029' E	N	N	
G19	WTG	52° 43.535' N	002° 57.802' E	N	N	
G20	WTG	52° 44.164' N	002° 57.689' E	N	N	
G21	WTG	52° 44.781' N	002° 57.575' E	N	N	
G22	WTG	52° 45.398' N	002° 57.461' E	N	N	
H19	WTG	52° 43.685' N	002° 59.854' E	N	N	
H20	WTG	52° 44.264' N	002° 59.756' E	N	N	
H21	WTG	52° 44.902' N	002° 59.648' E	N	N	
H22	WTG	52° 45.535' N	002° 59.515' E	N	N	
			TOTAL:	13/95	13/95	

7. VESSEL DETAILS

Vessel Details		
Name of Vessel:	Tess	
Call Sign:	T7AH7	
MMSI No:	2682239102	
Contact Details:	Phone: +31 255 760 071 Email: tess@dbconnect.nl	

Vessel Details		
Name of Vessel:	Seaway Ventus	
Call Sign:	5BFU6	
MMSI No:	209583000	
Contact Details:	Phone: + 31 6 535 46 853 Email: Seawayventus.bridge@seaway7.com	


Vessel Details		
Name of Vessel:	NR Rebellion	
Call Sign:	MROM4	
MMSI No:	232059246	
Contact Details:	Phone: +44 (0) 7984321461 Email: rebellion@nrmarine.co.uk	

Vessel Details		
Name of Vessel:	Norside Supporter	
Call Sign:	C6GP4	
MMSI No:	311001311	
Contact Details:	Phone: +47 46701233 Email: master.supporter@stodig.no	

Vessel Details		
Name of Vessel:	Abeko Server 2	
Call Sign:	PEDD	
MMSI No:	244290000	
Contact Details:	Phone: +31 641974182 Email: abekoserver2@abeko.nl	


Vessel Details		
Name of Vessel:	Afon Alaw	
Call Sign:	2FCZ7	
MMSI No:	235090202	
Contact Details:	Phone: +44 (0)7791 998 957 Email: afonalaw@holyheadtowing.com	

Vessel Details		
Name of Vessel:	Seafast Don	
Call Sign:	MMMD6	
MMSI No:	232044406	
Contact Details:	Phone: +44 (0) 7930897576 Email: Don@seafastltd.co.uk	

Vessel Details		
Name of Vessel:	Isle Of Jura	
Call Sign:	MFFY6	
MMSI No:	232021966	
Contact Details:	Phone: +44(0)7936910623 Email: Jura@seafastltd.co.uk	

Vessel Details		
Name of Vessel:	Reul Na Mara	
Call Sign:	GGKA	
MMSI No:	234671000	
Contact Details:	Phone: +44(0)1449700236 Email: gvreulnamara@gmail.com	

Vessel Details		
Name of Vessel:	GV Resilient	
Call Sign:	GSEE	
MMSI No:	232711000	
Contact Details:	Sat Phone: +44 (0)2841 140 788 Email: gvresilient@gmail.com	

Vessel Details		
Name of Vessel:	GV Adventure	
Call Sign:	2IFE4	
MMSI No:	235109237	
Contact Details:	Phone: +44 (0) 7842585022 Email: gvadventure3@gmail.com	

Vessel Details		
Name of Vessel:	Geosurveyor XI	
Call Sign:	2GRS3	
MMSI No:	235099951	
Contact Details:	Phone: +32 472 580 732 Email: geosurveyor11@geoxyz.eu	

Vessel Details		
Name of Vessel:	NKT Victoria	
Call Sign:	LAWV7	
MMSI No:	257016000	
Contact Details:	Phone: +47(0) 224 08110 Email: bridge.victoria@remoy-management.no	

NKT Victoria Support RHIBs, CTV & Workboats			
Name of Vessel	Call Sign	MMSI	Contact
CRC VIPER	2EDS8	235084238	NKT Victoria Phone: +47(0) 224 08110 Email: bridge.victoria@remoy-management.no
CRC CANBERRA	2EDS7	235084237	
CRC TRISTAR	2FQW9	235093497	
CRC TYPHOON	2DPX6	235081064	
CRC DAKOTA	2FQW8	235093496	
CRC CATALINA	2FQW6	235093494	
CRC PHANTOM	2FBM3	235089863	
CRC Voyager (CTV)	MBZZ7	232011764	
NKT Victoria Workboat 1	N/A	972570477	
NKT Victoria Workboat 2	N/A	972603298	
NKT Victoria Workboat 3	N/A	972601669	
NKT Victoria Workboat 4	N/A	972570478	