

EAST ANGLIA THREE

Notice to Mariners

NTM-042/2025

Export Cable Dredging (Nearshore)

Prepared by:	Checked by:	Approved by:
Marine Coordinator	Lead Marine Coordinator	Installation Manager

TABLE OF CONTENTS

1.	MARINE ACTIVITIES	3
1.1.	Summary:.....	3
1.2.	Activity Description:.....	3
1.3.	Program Schedule:.....	4
1.4.	Vessel Details:.....	4
2.	ACTIVITY AREA	6
2.1.	Offshore Activity Area:.....	6
2.2.	Isle of Jura Mooring Coordinates:.....	6
3.	PROJECT CONTACT DETAILS.....	8
3.1.	Site Management:	8
3.2.	Emergency Contact:.....	8
3.3.	Marine Management.....	8
4.	NOTICE TO MARINERS' DISTRIBUTION LIST.....	9

1. MARINE ACTIVITIES

1.1. Summary:

NKT will carry out nearshore intervention works in support of the installation on the East Anglia Three Export Cable in the Export Cable Corridor in the vicinity of Bawdsey approximately 800 metres from shore. Locations for works are identified in section 2.1 of this document. Diving operations will be carried out onboard the vessel "Isle of Jura", excavation and burial operation will be carried out by the "Abeko Server 2", and Survey works & Crew Change operations will be conducted by "Seafast Don"

All vessels are required to maintain a minimum of 500m separation distance from the Isle of Jura and Abeko Server 2 and pass at reduced speed.

It is further requested that all vessels give the Seafast Don a wide berth and pass at reduced speed when the vessel is engaged in survey activities.

1.2. Activity Description:

Abeko Server 2 will be positioned at the HDD locations to begin seabed excavation for pit and trench creation and will carry out spoil management activities along the trench. The Abeko Server 2 will be manned 24 hours on site, with the Afon Alaw providing support for barge movements and towing as needed. Once a trench has been excavated, and cable laid into it, then the Abeko Server 2 will place spoil back into the trench to backfill and then return the seabed to previous levels.

During operations, the Abeko Server 2 will be restricted in its ability to manoeuvre as defined under COLREGs (International Regulations for Preventing Collisions at Sea 1972) and will display the appropriate day shapes and lights. The vessel will also transmit an Automatic Identification System (AIS) message.

The Isle of Jura will deploy a four-point mooring spread, including chain clumps, ground and riser chains, mooring cans with yellow marker lights, and flashing sequences. An Alucat vessel will assist in connecting and disconnecting the Isle of Jura mooring lines to the mooring array.

Diving operations will be conducted on the Isle of Jura, divers will be working at the HDD locations, positions provided in Section 2.1. Diving operations will involve exposing HDD exit points, preparing for cable installation, and sealing post cable installation.

Following diving operations, the Isle of Jura will be equipped with a Controlled Flow Excavation (CFE) spread to perform remedial cable burial operation in the nearshore area, typically in sandy seabed location where excavation by Abeko Server was ineffective.

There may be possibilities of nighttime diving operations. Safety messages will be transmitted on CH16 to notify the start and end of diving operations.

During operations, the Isle of Jura will be anchored as defined under COLREGs (International Regulations for Preventing Collisions at Sea 1972) and will display the appropriate day shapes and lights. The vessel will also transmit an Automatic Identification System (AIS) message. The Alpha Diving flag and the appropriate lights will be displayed during diving operations.

The Seafast Don will conduct multi-beam echosounder surveys (MBES) and sub-bottom profiling (SBP) of the seabed and along the pre-cut trench during dredging activities. Equipped on a side-mounted pole extended into the water, the survey gear will make several passes at reduced speed over the area.

The Seafast Don will be responsible for daily crew transfer operations from the Port of Harwich to the vessels Isle of Jura, Abeko Server 2 and NKT Victoria throughout the duration of the works.

All vessels will monitor VHF CH16 and VHF DSC CH70 continuously throughout.

1.3. Program Schedule:


The vessels Abeko Server 2, Afon Alaw and Seafast Don mobilised from the Port of Lowestoft on 12/05/2025. The vessel Isle of Jura mobilised from the Port of Great Yarmouth on 26/05/2025 for mooring deployment activities.


The Seafast Don will transit to the work site from the Port of Harwich periodically throughout the project.


The vessels will operate 24 hours a day on site.


The works commenced on 15/05/2025 and is expected to continue until the 31/07/2025 dependent on weather.

1.4. Vessel Details:

Vessel Details		
Name of vessel:	Seafast Don	
Call Sign:	MMMD6	
MMSI No:	232044406	
On Board Contact Details:	Phone: 07930897576 Email: Don@seafastltd.co.uk	
Port of operation:	Harwich	

Vessel Details		
Name of vessel:	Afon Alaw	
Call Sign:	2FCZ7	
MMSI No:	235090202	
On Board Contact Details:	Phone: +44 (0)7791 998 957 Email: afonalaw@holyheadtowing.com	
Port of operation:	Harwich	

Vessel Details		
Name of vessel:	Abeko Server 2	
Call Sign:	PEDD	
MMSI No:	244290000	
On Board Contact Details:	Phone: +31 615512074 Email: abekoserver2@abeko.nl	
Port of operation:	Harwich	

Vessel Details		
Name of vessel:	Isle of Jura	
Call Sign:	2FCZ7	
MMSI No:	235090202	
On Board Contact Details:	Phone: +447936910623 Email: Jura@seafastltd.co.uk	
Port of operation:	Great Yarmouth	

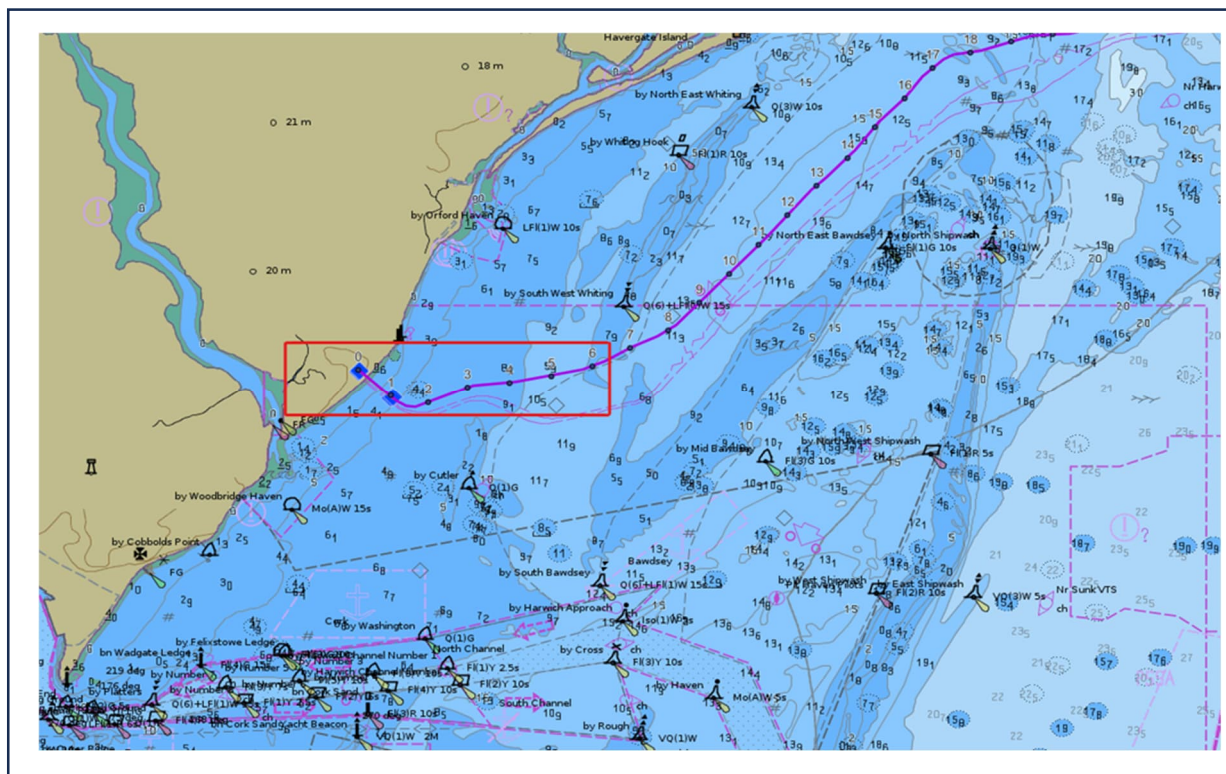
2. ACTIVITY AREA

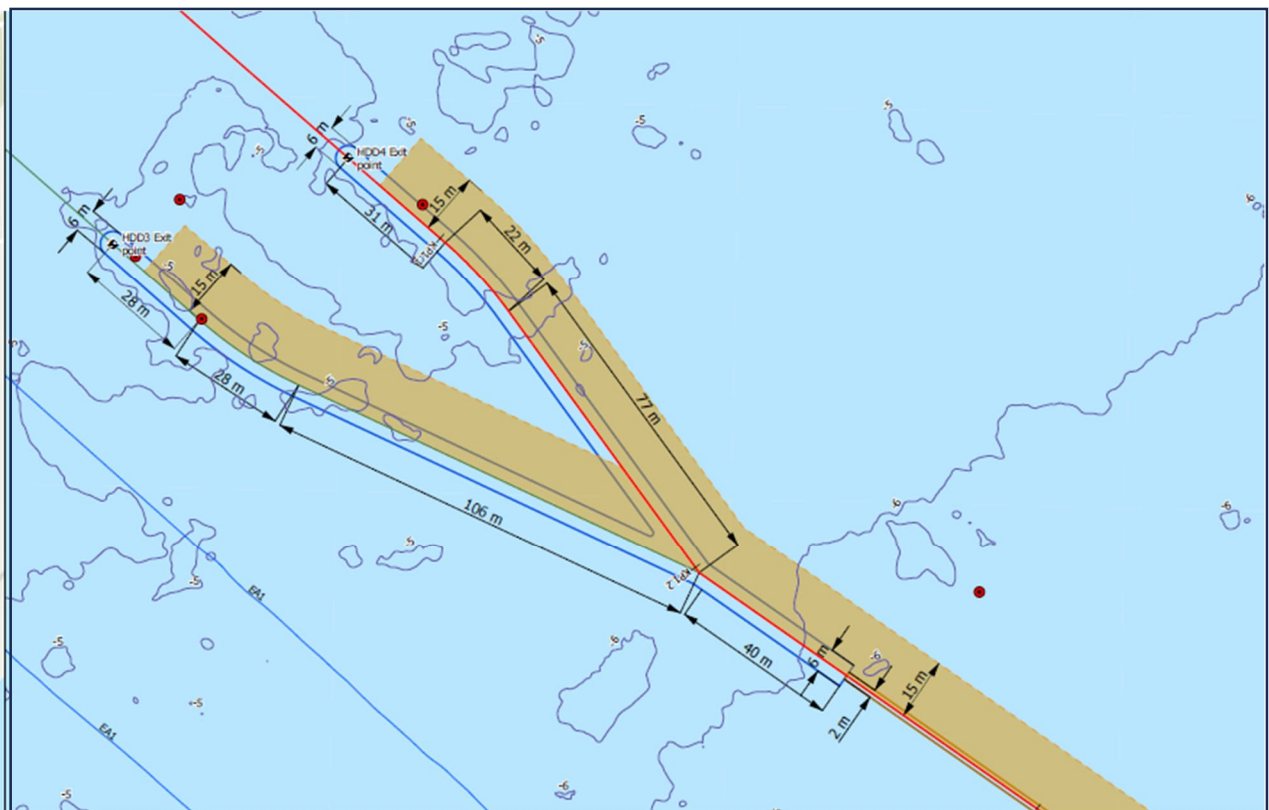
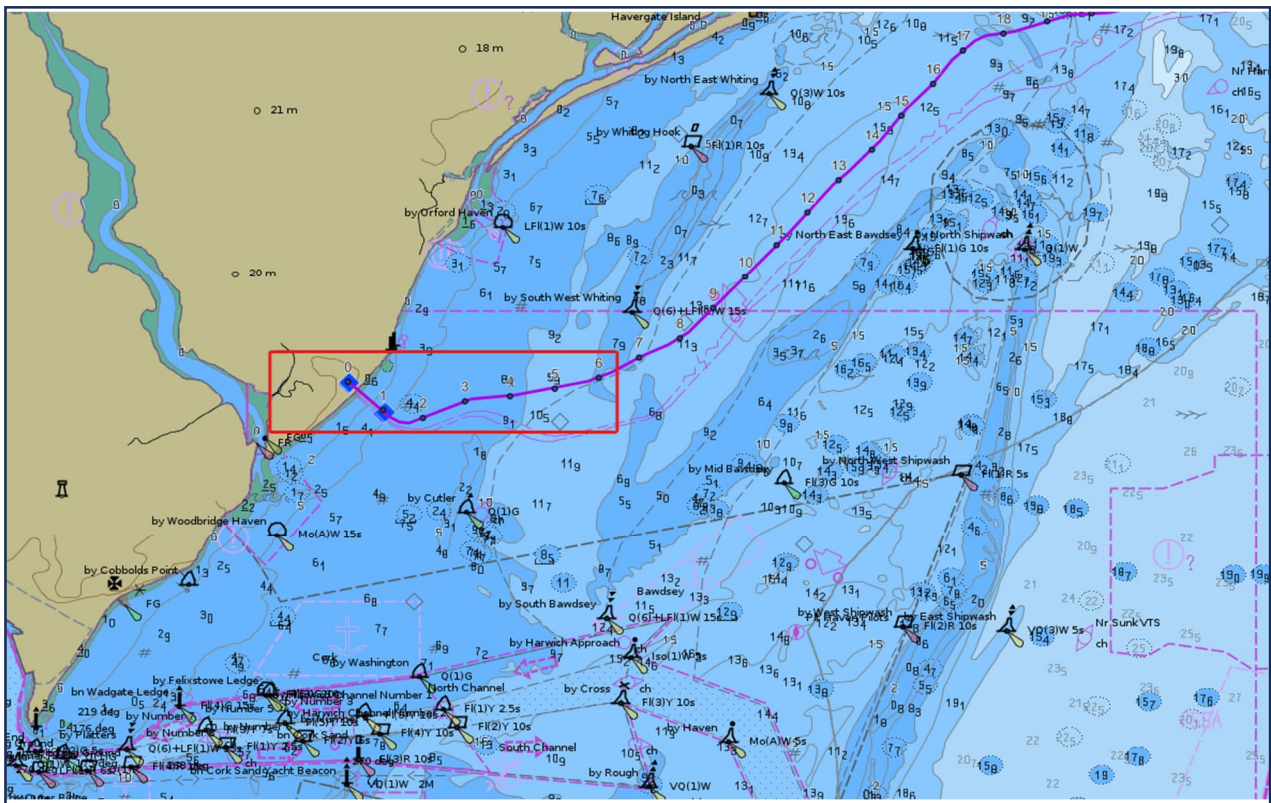
2.1. Offshore Activity Area:

Location	HDD ID	Latitude (WGS84 DDD MM.MMM)	Longitude (WGS84 DDD MM.MMM)
EA3 ECC	HDD North (No.4)	51° 59.738' N	001° 25.955' E
EA3 ECC	HDD South (No.3)	51° 59.725' N	001° 25.907' E

2.2. Isle of Jura Mooring Coordinates:

Location	Mooring Nos.	Latitude (WGS84 DDD MM.MMM)	Longitude (WGS84 DDD MM.MMM)
EA3 ECC	1	51° 59.831' N	001° 25.983' E
EA3 ECC	2	51° 59.734' N	001° 26.182' E
EA3 ECC	3	51° 59.581' N	001° 25.984' E
EA3 ECC	4	51° 59.679' N	001° 25.786' E





3. PROJECT CONTACT DETAILS

The following contact can provide relevant information if required. Please note that any specific queries can be addressed to the relevant shore-based representatives.

3.1. Site Management:

Marine Coordinator	
Name	EA3 MCC
Contact Telephone Number	Emergency Tel +44 (0) 141 6144821
Email Address	ea3_mcc@scottishpower.com
Address	Orbis Energy, Wilde Street, Lowestoft, NR32 1XH

Offshore Installation Manager	
Name	EA3 OIM
Contact Telephone Number	+44 (0) 7960 608 666
Email Address	ea3_oim@scottishpower.com
Address	Orbis Energy, Wilde Street, Lowestoft, NR32 1XH

3.2. Emergency Contact:

Emergency Contact	
Name	EA3 MCC
Contact Telephone Number	Emergency Tel +44 (0) 141 6144822
Email Address	ea3_mcc@scottishpower.com
Address	Orbis Energy, Wilde Street, Lowestoft, NR32 1XH

3.3. Marine Management

Marine Management	
Name	Anthony Milligan
Contact Telephone Number	Tel +44 (0) 7760 880723
Email Address	amilligan@scottishpower.com
Address	Scottish Power HQ 320 St Vincent Street, Glasgow, G2 5AD
Scope of Work	Export Cable Dredging (Nearshore)

4. NOTICE TO MARINERS' DISTRIBUTION LIST

A list of recipients for the Notice to Mariners is kept by the Project Team. If you wish to be added to this list, please contact the personnel whose contact details are set out within section 3 of this Notice.

Contacts	Email Address
The Crown Estate	consents@thecrownestate.co.uk
Marine Management Organisation	marine.consents@marinemanagement.org.uk
Marine Management Organisation	info@marinemanagement.org.uk
Kingfisher	kingfisher@seafish.co.uk
Local Marine Management Organisation Office	lowestoft@marinemanagement.org.uk
Inshore Fisheries and Conservation Authority	mail@eastern-ifca.gov.uk
Trinity House	navigation.directorate@thls.org
Trinity House	navigation@trinityhouse.co.uk
Maritime and Coastguard Agency	navigationsafety@mcga.gov.uk
United Kingdom Hydrographic Office	navwarnings@ukho.gov.uk
United Kingdom Hydrographic Office	sdr@ukho.gov.uk
United Kingdom Hydrographic Office	offshore.energy@ukho.gov.uk
National Federation of Fishermen's Organisations	nffo@nffo.org.uk
National Coastguard	nmoccontroller@hmcg.gov.uk
Centre of Environment, Fisheries and Aquaculture Science	renewables@cefas.co.uk
Local Coastguard	renewables@hmcg.gov.uk
Scottish Power Renewables Contacts	Email Address
Scottish Power Renewables	jpoulson@scottishpower.com
Scottish Power Renewables	amilligan@scottishpower.com
Scottish Power Renewables	cisbell@scottishpower.com
Scottish Power Renewables	mwooltorton@scottishpower.com
Scottish Power Renewables	mgregory@scottishpower.com
Scottish Power Renewables	ea3_mcc@scottishpower.com
Scottish Power Renewables	ea3_oim@scottishpower.com
Scottish Power Renewables	marine@scottishpower.com
Scottish Power Renewables	jyoung@scottishpower.com
Scottish Power Renewables	jodum@scottishpower.com
Scottish Power Renewables	fmurdoch@scottishpower.com
Scottish Power Renewables	eahub_construction@scottishpower.com
Scottish Power Renewables	mmasters@scottishpower.com
Scottish Power Renewables	r.stocks@scottishpower.com
Scottish Power Renewables	ccumming@scottishpower.com