

EAST ANGLIA THREE

Notice to Mariners

NTM-014/2025

EA3 Export Cable Corridor Dredging (Adverse Slope Preparation)

Prepared by: Conner Adams	Checked by: John Rae	Approved by: Dave Green
Lead Marine Coordinator	Marine Assurance Manager	Lead Offshore Installation Manager

TABLE OF CONTENTS

1. MARINE ACTIVITIES	3
1.1. Summary:	3
1.2. Activity Description:	3
1.3. Program Schedule:	3
1.4. Vessel Details:	3
2. ACTIVITY AREA	4
2.1. Dredging Activity Area:	4
2.2. EA3 Dredge Disposal Locations:	5
3. PROJECT CONTACT DETAILS	6
3.1. Site Management:	6
3.2. Emergency Contact:	6
3.3. Marine Management:	6
4. NOTICE TO MARINERS' DISTRIBUTION LIST	7
5. Appendix A – Proposed Dredging Locations	8

1. MARINE ACTIVITIES

1.1. Summary:

Mariners are advised that the vessel '**Njord R**' is due to commence dredging operations within East Anglia THREE export cable corridor. The works are due to commence Circa the **29/03/2025**. Operations will be conducted by NKT/Rohde Nielsen and the working area will be within the export cable corridor as per section [2.1](#).

During the period of export cable corridor dredging works, all vessels are requested to keep a 500m safety distance from the Njord R.

1.2. Activity Description:

The objective of the scope is to carry out dredging in areas where there are large sandwaves that could impact cable burial operations. There are 60 sandwave locations identified with the export cable route that will be targeted for dredging as per section [5](#). The extent of the dredge areas varies for each location. The lengths of dredge sections range from between 5m and 50m and the width of the sections is ~20m.

The 60 dredge areas are located between KP41 and KP123 of the export cable route.

The disposal of dredge material will be within the designated disposal area (HU212) and will be contained within the boundaries of the EA THREE DCO limits. HU212 extends from ~KP56 to ~KP140 along the export cable route.

1.3. Program Schedule:

The Njord R is expected to mobilise in the port of Grenaa and commence operations from the **29/03/2025**.

It is currently anticipated that, weather permitting, works will be carried out on a continuous basis (i.e., 24 hours working, seven days a week) unless notified otherwise.

The planned duration for these works is approximately 18 days, weather dependant. Completion of works will be notified by closure of this notice to mariners.

During operations, the '**Njord R**' will have restricted manoeuvrability as defined under COLREGs (International Regulations for Preventing Collisions at Sea, 1972). They will display the appropriate day shapes and lights and will transmit an Automatic Identification System (AIS) message.

1.4. Vessel Details:

Vessel Details	
Name of vessel:	Njord R
Call Sign:	OYOZ2
MMSI No:	219387000
On Board Contact Details:	Mob: +45 2937 5280 Email: njord@rohde-nielsen.dk
Port of operation:	Grenaa

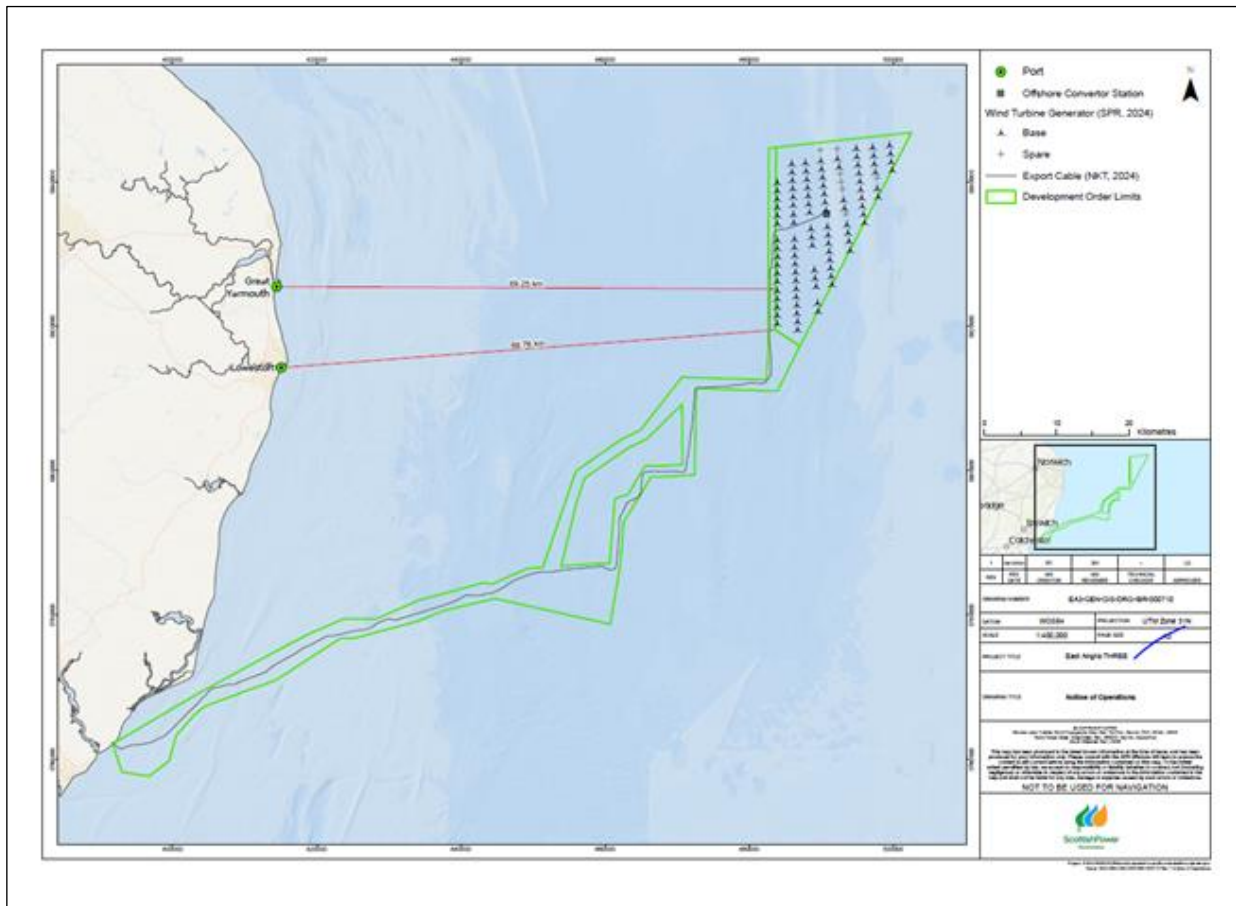


2. ACTIVITY AREA

2.1. Dredging Activity Area:

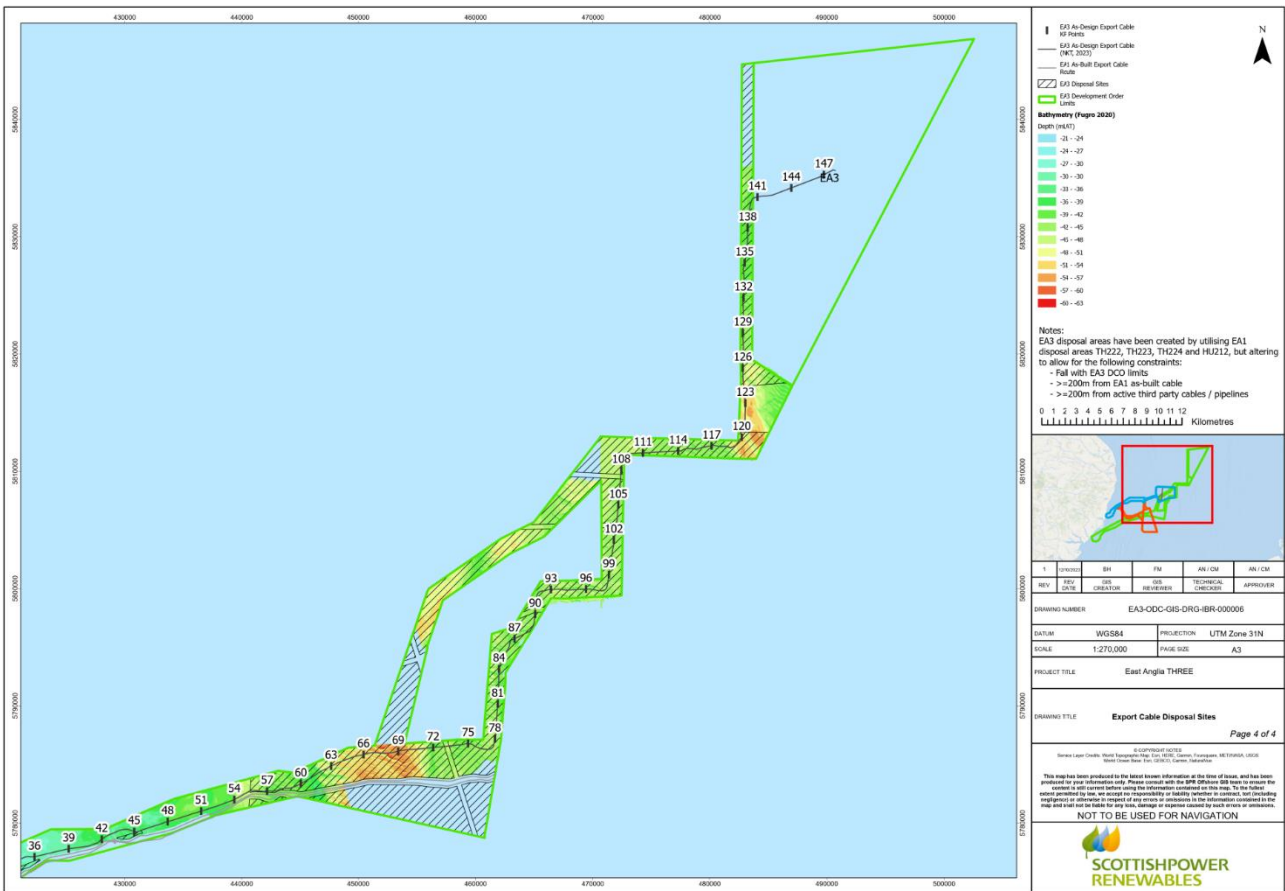
Dredging activities will be carried out between KP 41 and KP 123. Anticipate dredging locations are noted in [Appendix A](#).

Point No.	WGS84 UTM31N		Decimal Degrees		Degrees Decimal Minutes		KP
	Easting (m)	Northing (m)	Latitude (°N)	Longitude (°E)	Latitude (°N)	Longitude (°E)	
1	427630.11	5778290.52	52.15037	1.94226	52.09.022	001.56.535	41.468
2	483063.48	5815654.3	52.490767	2.750557	52.29.446	002.45.033	122.703



2.2. EA3 Dredge Disposal Locations:

Point No.	WGS84 UTM31N		Decimal Degrees		Degrees Decimal Minutes		KP
	Easting (m)	Northing (m)	Latitude (°N)	Longitude (°E)	Latitude (°N)	Longitude (°E)	
1	440649.38	5782716.29	52.191709	2.131746	52.11.502	002.07.904	55.451
2	483821.86	5833343.61	52.649818	2.760863	52.38.989	002.45.651	140.591



3. PROJECT CONTACT DETAILS

The following contact can provide relevant information if required. Please note that any specific queries can be addressed to the relevant shore-based representatives.

3.1. Site Management:

Marine Coordinator	
Name	EA3 MCC
Contact Telephone Number	+44 (0) 1416144821
Email Address	EA3_MCC@scottishpower.com
Address	Orbis Energy, Wilde Street, Lowestoft, NR32 1XH

Offshore Installation Manager	
Name	EA3 OIM
Contact Telephone Number	+44 (0) 7960 608 666
Email Address	ea3_oim@scottishpower.com
Address	Orbis Energy, Wilde Street, Lowestoft, NR32 1XH

3.2. Emergency Contact:

Emergency Contact	
Name	EA3 MCC
Contact Telephone Number	Emergency Tel +44 (0) 141 6144822
Email Address	EA3_MCC@scottishpower.com
Address	Orbis Energy, Wilde Street, Lowestoft, NR32 1XH

3.3. Marine Management

Marine Management	
Name	Anthony Milligan
Contact Telephone Number	Tel +44 (0) 7760 880723
Email Address	amilligan@scottishpower.com
Address	Scottish Power HQ 320 St Vincent Street, Glasgow, G25AD
Scope of Work	Export Cable Dredging

4. NOTICE TO MARINERS' DISTRIBUTION LIST

A list of recipients for the Notice to Mariners is kept by the Project Team. If you wish to be added to this list, please contact the personnel whose contact details are set out within section 3 of this Notice.

Contacts	Email Address
The Crown Estate	consents@thecrownestate.co.uk
Marine Management Organisation	marine.consents@marinemanagement.org.uk
Marine Management Organisation	info@marinemanagement.org.uk
Kingfisher	kingfisher@seafish.co.uk
Local Marine Management Organisation Office	lowestoft@marinemanagement.org.uk
Inshore Fisheries and Conservation Authority	mail@eastern-ifca.gov.uk
Trinity House	navigation.directorate@thls.org
Trinity House	navigation@trinityhouse.co.uk
Maritime and Coastguard Agency	navigationsafety@mcga.gov.uk
United Kingdom Hydrographic Office	navwarnings@ukho.gov.uk
United Kingdom Hydrographic Office	sdr@ukho.gov.uk
United Kingdom Hydrographic Office	offshore.energy@ukho.gov.uk
National Federation of Fishermen's Organisations	nffo@nffo.org.uk
National Coastguard	nmoccontroller@hmcg.gov.uk
Centre of Environment, Fisheries and Aquaculture Science	renewables@cefas.co.uk
Local Coastguard	renewables@hmcg.gov.uk
Scottish Power Renewables Contacts	Email Address
Scottish Power Renewables	jpoulson@scottishpower.com
Scottish Power Renewables	dgreen@scottishpower.com
Scottish Power Renewables	amilligan@scottishpower.com
Scottish Power Renewables	mwooltorton@scottishpower.com
Scottish Power Renewables	mgregory@scottishpower.com
Scottish Power Renewables	ea3_mcc@scottishpower.com
Scottish Power Renewables	ea3_oim@scottishpower.com
Scottish Power Renewables	marine@scottishpower.com
Scottish Power Renewables	jyoung@scottishpower.com
Scottish Power Renewables	jodum@scottishpower.com
Scottish Power Renewables	fmurdoch@scottishpower.com
Scottish Power Renewables	eahub_construction@scottishpower.com
Scottish Power Renewables	mmasters@scottishpower.com
Scottish Power Renewables	r.stocks@scottishpower.com
Scottish Power Renewables	ccumming@scottishpower.com
Scottish Power Renewables	c.mcginis@scottishpower.com

5. APPENDIX A – PROPOSED DREDGING LOCATIONS

Planned dredging locations within the export cable corridor are noted in the below. Exact locations may change however works are expected to be confined to between KP41 and KP123.

Section	KP	Easting [m]	Northing [m]
Section 1:	49.004	434597.11	5780405.50
	49.005	434598.07	5780405.80
	49.006	434599.02	5780406.10
	49.007	434599.97	5780406.41
	49.008	434600.93	5780406.71
	49.009	434601.88	5780407.01
	49.010	434602.83	5780407.31
	49.011	434603.79	5780407.61
Section 2:	52.146	437590.26	5781355.43
	52.147	437591.21	5781355.75
	52.148	437592.16	5781356.06
	52.149	437593.10	5781356.37
	52.150	437594.05	5781356.69
	52.152	437595.95	5781357.31
Section 3:	53.963	439297.98	5781974.75
	53.964	439298.94	5781975.02
	53.965	439299.91	5781975.29
	53.966	439300.87	5781975.56
	53.967	439301.83	5781975.83
	53.968	439302.79	5781976.11
	53.969	439303.76	5781976.38
	53.970	439304.72	5781976.65
Section 4:	55.880	441009.36	5782788.79
	55.881	441010.36	5782788.73
	55.882	441011.36	5782788.66
	55.883	441012.36	5782788.60
	55.884	441013.35	5782788.54
	55.885	441014.35	5782788.48
Section 5:	56.630	441755.00	5782708.96
	56.631	441756.00	5782708.88
	56.632	441757.00	5782708.81
	56.633	441757.99	5782708.74
	56.634	441758.99	5782708.67
	56.635	441759.99	5782708.60
	56.636	441760.99	5782708.53
	56.637	441761.98	5782708.46
	56.638	441762.98	5782708.40
	56.639	441763.98	5782708.33
Section 6:	56.669	441793.93	5782706.55
	56.670	441794.93	5782706.49

Section	KP	Easting [m]	Northing [m]
	56.671	441795.92	5782706.44
	56.672	441796.92	5782706.39
	56.673	441797.92	5782706.34
	56.674	441798.92	5782706.30
	56.675	441799.92	5782706.25
	56.676	441800.92	5782706.20
	56.677	441801.92	5782706.15
	56.678	441802.92	5782706.11
	56.679	441803.91	5782706.06
	56.680	441804.91	5782706.01
	56.681	441805.91	5782705.97
	56.682	441806.91	5782705.92
	56.683	441807.91	5782705.88
	56.684	441808.91	5782705.84
Section 7:	56.727	441851.89	5782704.47
	56.728	441852.89	5782704.45
	56.729	441853.89	5782704.43
	56.730	441854.89	5782704.41
	56.731	441855.89	5782704.39
	56.732	441856.89	5782704.38
	56.733	441857.89	5782704.36
	56.734	441858.89	5782704.34
Section 8:	56.742	441866.89	5782704.23
	56.743	441867.89	5782704.22
	56.744	441868.89	5782704.21
	56.745	441869.89	5782704.19
	56.746	441870.88	5782704.18
	56.747	441871.88	5782704.17
Section 9:	56.769	441893.88	5782704.10
	56.770	441894.88	5782704.10
	56.771	441895.88	5782704.10
	56.772	441896.88	5782704.11
	56.773	441897.88	5782704.11
	56.774	441898.88	5782704.12
	56.775	441899.88	5782704.12
	56.776	441900.88	5782704.13
Section 10:	56.788	441912.88	5782704.24
	56.789	441913.88	5782704.25
	56.790	441914.88	5782704.27
	56.791	441915.88	5782704.28
	56.792	441916.88	5782704.30
	56.794	441918.88	5782704.33
Section 11:	57.779	442900.98	5782750.07

Section	KP	Easting [m]	Northing [m]
	57.780	442901.94	5782750.36
	57.781	442902.89	5782750.65
	57.782	442903.85	5782750.95
	57.783	442904.80	5782751.24
	57.784	442905.76	5782751.54
	57.785	442906.71	5782751.84
	57.786	442907.67	5782752.14
Section 12:	57.876	442991.39	5782785.01
	57.877	442992.31	5782785.40
	57.878	442993.23	5782785.80
	57.879	442994.14	5782786.20
	57.880	442995.06	5782786.60
	57.881	442995.98	5782786.99
	57.882	442996.90	5782787.39
Section 13:	57.883	442997.81	5782787.79
	57.884	442998.73	5782788.18
	58.257	443344.02	5782926.84
	58.258	443344.99	5782927.09
	58.259	443345.96	5782927.34
	58.260	443346.93	5782927.59
	58.261	443347.90	5782927.84
Section 14 -1	58.262	443348.87	5782928.09
	58.263	443349.83	5782928.34
	58.264	443350.80	5782928.58
	58.270	443356.62	5782930.05
	58.271	443357.59	5782930.30
	58.272	443358.56	5782930.54
	58.273	443359.53	5782930.78
	58.274	443360.50	5782931.02
	58.275	443361.47	5782931.26
	58.276	443362.44	5782931.50
	58.277	443363.42	5782931.74
	58.278	443364.39	5782931.97
Section 14-2	58.279	443365.36	5782932.21
	58.280	443366.33	5782932.45
	58.281	443367.30	5782932.68
	58.282	443368.27	5782932.92
	58.283	443369.25	5782933.15
	58.284	443370.22	5782933.38
	58.432	443515.71	5782960.10
58.433	443516.71	5782960.23	
58.434	443517.70	5782960.36	
58.435	443518.69	5782960.48	

Section	KP	Easting [m]	Northing [m]
	58.436	443519.68	5782960.61
	58.437	443520.67	5782960.73
	58.438	443521.67	5782960.86
	58.439	443522.66	5782960.98
	58.440	443523.65	5782961.10
	58.441	443524.64	5782961.22
	58.442	443525.64	5782961.34
	58.443	443526.63	5782961.46
	58.444	443527.62	5782961.58
	58.445	443528.62	5782961.70
	58.447	443530.60	5782961.94
	58.449	443532.59	5782962.17
	58.450	443533.58	5782962.29
Section 15:	58.464	443547.50	5782963.82
	58.465	443548.49	5782963.93
	58.466	443549.49	5782964.03
	58.467	443550.48	5782964.13
	58.468	443551.48	5782964.24
	58.469	443552.47	5782964.34
	58.471	443554.46	5782964.54
Section 16:	58.489	443572.43	5782965.57
	58.490	443573.42	5782965.62
	58.491	443574.42	5782965.66
	58.492	443575.42	5782965.70
	58.493	443576.42	5782965.75
	58.494	443577.42	5782965.79
	58.495	443578.42	5782965.83
	58.496	443579.42	5782965.88
	58.497	443580.42	5782965.92
	58.498	443581.42	5782965.97
	58.499	443582.42	5782966.01
	58.500	443583.42	5782966.05
58.501	443584.41	5782966.10	
Section 17:	58.534	443617.38	5782967.54
	58.535	443618.38	5782967.58
	58.536	443619.38	5782967.62
	58.537	443620.38	5782967.67
	58.538	443621.38	5782967.71
	58.539	443622.38	5782967.76
	58.540	443623.38	5782967.80
	58.541	443624.38	5782967.84
	58.542	443625.38	5782967.89
	58.543	443626.37	5782967.93

Section	KP	Easting [m]	Northing [m]
	58.544	443627.37	5782967.97
Section 18:	58.551	443634.37	5782968.28
	58.552	443635.37	5782968.32
	58.553	443636.36	5782968.37
	58.554	443637.36	5782968.41
	58.555	443638.36	5782968.45
	58.556	443639.36	5782968.50
Section 19:	58.983	444065.23	5782993.66
	58.984	444066.21	5782993.84
	58.985	444067.20	5782994.01
	58.986	444068.18	5782994.19
	58.987	444069.16	5782994.38
	58.988	444070.15	5782994.56
	58.989	444071.13	5782994.74
	58.990	444072.11	5782994.92
	58.991	444073.10	5782995.11
	58.992	444074.08	5782995.29
Section 20:	59.032	444113.22	5783003.51
	59.033	444114.20	5783003.74
	59.034	444115.17	5783003.96
	59.035	444116.15	5783004.19
	59.036	444117.12	5783004.43
	59.037	444118.09	5783004.67
	59.038	444119.06	5783004.92
	59.039	444120.03	5783005.16
	59.040	444121.00	5783005.40
	59.041	444121.97	5783005.64
Section 21:	59.713	444756.85	5783221.90
	59.714	444757.74	5783222.34
	59.715	444758.64	5783222.78
	59.716	444759.54	5783223.22
	59.717	444760.43	5783223.67
	59.718	444761.33	5783224.11
	59.719	444762.23	5783224.55
	59.720	444763.13	5783224.99
	59.721	444764.02	5783225.43
	59.722	444764.92	5783225.88
	59.723	444765.82	5783226.32
	59.724	444766.71	5783226.76
	59.725	444767.61	5783227.20
	59.726	444768.51	5783227.64
59.727	444769.40	5783228.09	
59.729	444771.20	5783228.97	

Section	KP	Easting [m]	Northing [m]
	59.730	444772.10	5783229.41
	59.731	444772.99	5783229.85
Section 22:	62.037	446752.34	5784404.70
	62.038	446753.20	5784405.20
	62.039	446754.06	5784405.71
	62.040	446754.92	5784406.22
	62.041	446755.78	5784406.73
	62.042	446756.64	5784407.24
	62.043	446757.50	5784407.74
	62.044	446758.36	5784408.25
	62.045	446759.23	5784408.76
	62.046	446760.09	5784409.27
Section 23:	62.438	447097.57	5784608.12
	62.439	447098.47	5784608.57
	62.440	447099.36	5784609.01
	62.441	447100.26	5784609.46
	62.442	447101.15	5784609.91
	62.443	447102.05	5784610.35
	62.444	447102.94	5784610.80
Section 24:	64.284	448784.50	5785344.26
	64.285	448785.44	5785344.61
	64.286	448786.37	5785344.96
	64.287	448787.31	5785345.31
	64.289	448789.18	5785346.01
	64.290	448790.12	5785346.36
	64.291	448791.06	5785346.71
	64.293	448792.93	5785347.42
	64.294	448793.86	5785347.77
Section 25:	64.314	448812.59	5785354.79
	64.315	448813.53	5785355.14
	64.316	448814.46	5785355.49
	64.317	448815.40	5785355.84
	64.318	448816.34	5785356.19
	64.319	448817.27	5785356.54
	64.320	448818.21	5785356.89
	64.321	448819.15	5785357.24
	64.322	448820.08	5785357.60
Section 26:	64.364	448859.41	5785372.34
	64.365	448860.35	5785372.69
	64.366	448861.28	5785373.04
	64.367	448862.22	5785373.39
	64.368	448863.16	5785373.74
	64.369	448864.09	5785374.09

Section	KP	Easting [m]	Northing [m]
	64.370	448865.03	5785374.44
	64.371	448865.97	5785374.80
	64.373	448867.84	5785375.50
	64.376	448870.65	5785376.55
	64.377	448871.58	5785376.90
Section 27:	65.079	449526.76	5785628.99
	65.080	449527.69	5785629.35
	65.081	449528.62	5785629.71
	65.082	449529.56	5785630.07
	65.083	449530.49	5785630.43
	65.084	449531.42	5785630.79
	65.085	449532.36	5785631.13
Section 28:	65.555	449986.53	5785750.51
	65.556	449987.52	5785750.67
	65.557	449988.51	5785750.82
	65.558	449989.50	5785750.98
	65.559	449990.48	5785751.13
	65.560	449991.47	5785751.29
	65.561	449992.46	5785751.45
	65.562	449993.45	5785751.60
	65.563	449994.44	5785751.76
Section 29:	65.564	449995.42	5785751.91
	65.571	450002.34	5785753.01
	65.572	450003.32	5785753.16
	65.573	450004.31	5785753.32
	65.574	450005.30	5785753.48
	65.575	450006.29	5785753.63
Section 30:	65.576	450007.28	5785753.79
	65.784	450211.80	5785791.37
	65.785	450212.77	5785791.59
	65.786	450213.75	5785791.81
	65.787	450214.73	5785792.03
	65.788	450215.70	5785792.26
	65.789	450216.68	5785792.48
	65.790	450217.65	5785792.70
Section 31:	65.977	450398.79	5785839.10
	65.978	450399.75	5785839.37
	65.979	450400.72	5785839.63
	65.980	450401.68	5785839.90
	65.981	450402.65	5785840.17
	65.982	450403.61	5785840.43
	65.983	450404.57	5785840.70
	65.984	450405.54	5785840.96

Section	KP	Easting [m]	Northing [m]
	65.985	450406.50	5785841.23
	65.986	450407.47	5785841.50
	65.987	450408.43	5785841.76
	65.988	450409.39	5785842.03
	65.989	450410.36	5785842.30
	65.990	450411.32	5785842.56
	65.991	450412.28	5785842.83
	65.992	450413.25	5785843.10
	65.993	450414.21	5785843.36
	65.994	450415.17	5785843.63
	65.995	450416.14	5785843.90
	65.996	450417.10	5785844.17
Section 32:	66.330	450738.76	5785933.19
	66.331	450739.74	5785933.41
	66.332	450740.72	5785933.62
	66.333	450741.69	5785933.84
	66.334	450742.67	5785934.05
	66.335	450743.65	5785934.27
	66.336	450744.62	5785934.48
	66.337	450745.60	5785934.70
	66.338	450746.58	5785934.91
	66.339	450747.55	5785935.13
	66.340	450748.53	5785935.34
	66.341	450749.51	5785935.56
Section 33:	66.531	450935.07	5785976.39
	66.532	450936.05	5785976.60
	66.533	450937.02	5785976.82
	66.534	450938.00	5785977.03
	66.535	450938.97	5785977.25
	66.536	450939.95	5785977.46
	66.537	450940.93	5785977.68
	66.538	450941.90	5785977.89
	66.539	450942.88	5785978.11
	66.540	450943.86	5785978.32
	66.541	450944.83	5785978.54
	66.542	450945.81	5785978.75
	66.544	450947.76	5785979.18
	66.545	450948.74	5785979.40
	66.546	450949.72	5785979.61
	66.547	450950.69	5785979.83
	66.548	450951.67	5785980.04
	66.549	450952.65	5785980.26
	66.550	450953.62	5785980.47

Section	KP	Easting [m]	Northing [m]
	66.551	450954.60	5785980.69
	66.552	450955.58	5785980.90
	66.553	450956.55	5785981.12
	66.554	450957.53	5785981.33
	66.555	450958.51	5785981.55
	66.556	450959.48	5785981.76
	66.558	450961.44	5785982.19
	66.559	450962.41	5785982.40
	66.560	450963.39	5785982.62
	66.561	450964.37	5785982.83
	66.562	450965.34	5785983.05
	66.565	450968.27	5785983.69
	66.566	450969.25	5785983.91
	66.567	450970.23	5785984.12
Section 34:	66.574	450977.11	5785985.40
	66.575	450978.09	5785985.57
	66.576	450979.08	5785985.73
	66.577	450980.07	5785985.89
	66.578	450981.06	5785986.05
	66.579	450982.04	5785986.20
Section 35:	67.025	451426.29	5786024.92
	67.026	451427.29	5786025.01
	67.027	451428.28	5786025.10
	67.028	451429.28	5786025.19
	67.029	451430.28	5786025.27
	67.030	451431.27	5786025.36
	67.031	451432.27	5786025.45
	67.032	451433.26	5786025.54
Section 36:	67.038	451439.24	5786026.01
	67.039	451440.24	5786026.07
	67.040	451441.24	5786026.12
	67.041	451442.24	5786026.17
	67.042	451443.24	5786026.22
	67.043	451444.24	5786026.26
	67.044	451445.24	5786026.31
	67.045	451446.24	5786026.35
	67.046	451447.24	5786026.39
	67.047	451448.23	5786026.43
	67.048	451449.23	5786026.46
	67.049	451450.23	5786026.49
	67.050	451451.23	5786026.53
	67.051	451452.23	5786026.55
	67.052	451453.23	5786026.58

Section	KP	Easting [m]	Northing [m]
	67.053	451454.23	5786026.61
	67.054	451455.23	5786026.63
	67.055	451456.23	5786026.65
	67.056	451457.23	5786026.67
	67.057	451458.23	5786026.68
	67.058	451459.23	5786026.70
	67.059	451460.23	5786026.71
	67.060	451461.23	5786026.72
	67.061	451462.23	5786026.72
	67.062	451463.23	5786026.73
	67.063	451464.23	5786026.73
	67.064	451465.23	5786026.73
	67.065	451466.23	5786026.73
	67.066	451467.23	5786026.73
	67.067	451468.23	5786026.72
	67.068	451469.23	5786026.72
	67.069	451470.23	5786026.71
	67.070	451471.23	5786026.70
Section 37:	67.121	451522.09	5786023.29
	67.122	451523.08	5786023.16
	67.123	451524.08	5786023.04
	67.124	451525.07	5786022.91
	67.125	451526.06	5786022.79
	67.126	451527.05	5786022.66
	67.127	451528.04	5786022.52
	67.128	451529.03	5786022.39
	67.129	451530.02	5786022.25
	67.130	451531.01	5786022.11
	67.131	451532.00	5786021.97
	67.132	451532.99	5786021.83
	67.133	451533.98	5786021.68
	67.134	451534.97	5786021.54
	67.135	451535.96	5786021.39
	67.136	451536.95	5786021.24
	67.137	451537.94	5786021.08
	67.138	451538.93	5786020.93
	67.139	451539.91	5786020.77
	67.140	451540.90	5786020.61
	67.141	451541.89	5786020.45
	67.142	451542.87	5786020.28
	67.143	451543.86	5786020.12
	67.144	451544.85	5786019.95
	67.145	451545.83	5786019.79

Section	KP	Easting [m]	Northing [m]
	67.146	451546.82	5786019.62
	67.147	451547.81	5786019.45
	67.148	451548.79	5786019.29
	67.149	451549.78	5786019.12
	67.150	451550.76	5786018.96
	67.151	451551.75	5786018.79
	67.152	451552.74	5786018.63
	67.153	451553.72	5786018.46
	67.154	451554.71	5786018.30
	67.155	451555.70	5786018.13
	67.156	451556.68	5786017.97
	67.157	451557.67	5786017.80
	67.158	451558.65	5786017.64
	67.159	451559.64	5786017.47
	67.160	451560.63	5786017.31
	67.173	451573.45	5786015.16
	67.174	451574.43	5786014.99
	67.175	451575.42	5786014.83
	67.176	451576.41	5786014.66
	67.177	451577.39	5786014.50
	67.178	451578.38	5786014.33
	67.179	451579.36	5786014.16
	67.180	451580.35	5786014.00
	67.181	451581.34	5786013.83
	67.182	451582.32	5786013.67
	67.183	451583.31	5786013.50
	67.184	451584.30	5786013.34
	67.185	451585.28	5786013.17
	67.186	451586.27	5786013.01
	67.187	451587.25	5786012.84
	67.188	451588.24	5786012.68
	67.189	451589.23	5786012.51
	67.190	451590.21	5786012.35
	67.191	451591.20	5786012.18
	67.192	451592.19	5786012.02
	67.193	451593.17	5786011.85
	67.194	451594.16	5786011.68
	67.195	451595.14	5786011.52
	67.196	451596.13	5786011.35
	67.197	451597.12	5786011.19
	67.198	451598.10	5786011.02
	67.199	451599.09	5786010.86
	67.200	451600.08	5786010.69

Section	KP	Easting [m]	Northing [m]
	67.201	451601.06	5786010.53
	67.202	451602.05	5786010.36
	67.203	451603.03	5786010.20
	67.204	451604.02	5786010.03
	67.205	451605.01	5786009.87
	67.206	451605.99	5786009.70
	67.207	451606.98	5786009.54
	67.208	451607.97	5786009.37
	67.209	451608.95	5786009.20
	67.210	451609.94	5786009.04
	67.211	451610.92	5786008.87
	67.212	451611.91	5786008.71
Section 39:	68.618	453007.47	5786037.08
	68.619	453008.44	5786037.30
	68.620	453009.42	5786037.51
	68.621	453010.39	5786037.73
	68.622	453011.37	5786037.95
	68.623	453012.35	5786038.17
	68.624	453013.32	5786038.39
Section 40:	74.743	459077.92	5786746.20
	74.744	459078.88	5786746.46
	74.745	459079.85	5786746.72
	74.746	459080.81	5786746.98
	74.747	459081.78	5786747.25
	74.748	459082.74	5786747.51
Section 41:	76.259	460493.87	5786350.77
	76.260	460494.84	5786350.55
	76.261	460495.81	5786350.32
	76.262	460496.79	5786350.10
	76.263	460497.76	5786349.87
	76.264	460498.74	5786349.65
	76.265	460499.71	5786349.43
	76.266	460500.69	5786349.20
	76.267	460501.66	5786348.98
	76.268	460502.64	5786348.76
	76.269	460503.61	5786348.54
	76.270	460504.59	5786348.31
	76.271	460505.56	5786348.09
	76.272	460506.54	5786347.87
	76.273	460507.51	5786347.65
	76.274	460508.49	5786347.43
	76.275	460509.47	5786347.22
	76.276	460510.44	5786347.00

Section	KP	Easting [m]	Northing [m]
	76.277	460511.42	5786346.78
	76.278	460512.39	5786346.56
	76.280	460514.35	5786346.13
	76.281	460515.32	5786345.91
	76.282	460516.30	5786345.70
	76.283	460517.28	5786345.48
	76.284	460518.25	5786345.27
	76.285	460519.23	5786345.05
	76.286	460520.21	5786344.84
	76.287	460521.18	5786344.63
	76.288	460522.16	5786344.41
	76.289	460523.14	5786344.20
	76.290	460524.12	5786343.99
	76.291	460525.09	5786343.78
	76.292	460526.07	5786343.57
	76.293	460527.05	5786343.36
	76.294	460528.03	5786343.15
	76.295	460529.00	5786342.94
	76.296	460529.98	5786342.73
	76.297	460530.96	5786342.52
	76.298	460531.94	5786342.32
	76.299	460532.92	5786342.11
	76.300	460533.89	5786341.90
	76.301	460534.87	5786341.70
Section 42:	76.885	461115.69	5786305.24
	76.886	461116.69	5786305.32
	76.887	461117.69	5786305.41
	76.888	461118.68	5786305.49
	76.889	461119.68	5786305.57
	76.890	461120.67	5786305.66
	76.891	461121.67	5786305.74
	76.892	461122.67	5786305.83
	76.893	461123.66	5786305.91
	76.894	461124.66	5786306.00
	76.895	461125.66	5786306.09
	76.896	461126.65	5786306.17
	76.897	461127.65	5786306.27
	76.898	461128.64	5786306.38
	76.899	461129.64	5786306.49
76.900	461130.63	5786306.60	
76.901	461131.62	5786306.72	
76.902	461132.62	5786306.83	
76.903	461133.61	5786306.95	

Section	KP	Easting [m]	Northing [m]
	76.904	461134.60	5786307.07
	76.905	461135.59	5786307.20
	76.906	461136.59	5786307.32
	76.907	461137.58	5786307.45
	76.908	461138.57	5786307.58
	76.909	461139.56	5786307.71
	76.910	461140.55	5786307.84
	76.911	461141.54	5786307.98
	76.912	461142.53	5786308.11
	76.913	461143.52	5786308.25
	76.914	461144.51	5786308.39
	76.915	461145.50	5786308.54
	76.916	461146.49	5786308.68
Section 43:	77.154	461364.32	5786398.57
	77.155	461365.12	5786399.16
	77.156	461365.92	5786399.76
	77.157	461366.72	5786400.36
	77.158	461367.52	5786400.95
	77.159	461368.32	5786401.56
	77.160	461369.12	5786402.16
	77.161	461369.92	5786402.76
	77.163	461371.51	5786403.98
77.164	461372.30	5786404.59	
Section 44:	79.430	461766.89	5788576.11
	79.431	461766.97	5788577.10
	79.432	461767.05	5788578.10
	79.433	461767.13	5788579.10
	79.434	461767.22	5788580.09
	79.439	461767.62	5788585.08
	79.440	461767.71	5788586.07
	79.441	461767.79	5788587.07
	79.445	461768.12	5788591.06
	79.446	461768.20	5788592.05
79.447	461768.28	5788593.05	
Section 45:	79.461	461769.42	5788607.00
	79.462	461769.51	5788608.00
	79.463	461769.59	5788609.00
	79.464	461769.67	5788609.99
	79.465	461769.75	5788610.99
	79.466	461769.83	5788611.99
	79.467	461769.92	5788612.98
	79.468	461770.00	5788613.98
79.469	461770.08	5788614.98	

Section	KP	Easting [m]	Northing [m]
Section 46:	86.967	463274.43	5795724.93
	86.968	463275.33	5795725.37
	86.969	463276.23	5795725.80
	86.970	463277.14	5795726.23
	86.971	463278.04	5795726.67
	86.972	463278.94	5795727.10
	86.973	463279.84	5795727.53
	86.974	463280.74	5795727.96
	86.975	463281.64	5795728.39
	86.976	463282.55	5795728.82
Section 47:	87.184	463475.29	5795806.78
	87.185	463476.23	5795807.13
	87.186	463477.16	5795807.49
	87.187	463478.10	5795807.85
	87.188	463479.03	5795808.20
	87.189	463479.96	5795808.56
	87.190	463480.90	5795808.92
Section 48:	87.789	464032.42	5796042.50
	87.790	464033.34	5796042.89
	87.791	464034.25	5796043.29
	87.792	464035.17	5796043.69
	87.793	464036.09	5796044.09
	87.794	464037.00	5796044.49
	87.795	464037.92	5796044.89
	87.796	464038.84	5796045.29
	87.797	464039.76	5796045.68
Section 49:	92.043	465435.72	5799736.79
	92.044	465436.54	5799737.35
	92.045	465437.37	5799737.92
	92.046	465438.19	5799738.48
	92.047	465439.03	5799739.02
	92.048	465439.91	5799739.50
	92.049	465440.80	5799739.97
	92.050	465441.68	5799740.44
	92.051	465442.56	5799740.91
	92.052	465443.44	5799741.39
	92.053	465444.32	5799741.86
	92.054	465445.21	5799742.33
	92.055	465446.09	5799742.79
	92.056	465446.97	5799743.26
92.057	465447.86	5799743.73	
92.058	465448.74	5799744.19	
92.059	465449.63	5799744.66	

Section	KP	Easting [m]	Northing [m]
	92.060	465450.51	5799745.12
Section 50:	92.159	465540.38	5799786.50
	92.160	465541.32	5799786.85
	92.162	465543.20	5799787.54
	92.163	465544.14	5799787.88
	92.164	465545.08	5799788.22
	92.165	465546.02	5799788.56
	92.166	465546.96	5799788.90
Section 51:	92.389	465765.81	5799826.53
	92.390	465766.81	5799826.57
	92.391	465767.81	5799826.60
	92.392	465768.81	5799826.64
	92.393	465769.81	5799826.67
	92.394	465770.81	5799826.70
	92.395	465771.81	5799826.74
	92.396	465772.80	5799826.79
	92.397	465773.80	5799826.85
	92.398	465774.80	5799826.90
	92.399	465775.80	5799826.95
	92.400	465776.80	5799827.01
	92.401	465777.80	5799827.06
	92.402	465778.80	5799827.12
	92.403	465779.79	5799827.18
	92.404	465780.79	5799827.24
	92.405	465781.79	5799827.30
Section 52:	92.877	466246.07	5799909.91
	92.878	466247.06	5799910.06
	92.879	466248.05	5799910.20
	92.880	466249.04	5799910.35
	92.881	466250.03	5799910.50
	92.882	466251.02	5799910.64
	92.883	466252.01	5799910.79
	92.884	466253.00	5799910.94
Section 53:	93.459	466826.86	5799940.98
	93.460	466827.86	5799940.97
	93.461	466828.86	5799940.97
	93.462	466829.86	5799940.96
	93.463	466830.86	5799940.95
	93.464	466831.86	5799940.94
	93.465	466832.86	5799940.94
	93.466	466833.86	5799940.93
	93.467	466834.86	5799940.92
	93.468	466835.86	5799940.91

Section	KP	Easting [m]	Northing [m]
	93.469	466836.86	5799940.90
	93.470	466837.86	5799940.90
	93.471	466838.86	5799940.89
	93.472	466839.86	5799940.88
	93.473	466840.86	5799940.87
	93.474	466841.86	5799940.86
Section 54:	97.284	470633.92	5799799.59
	97.285	470634.91	5799799.40
	97.286	470635.89	5799799.21
	97.287	470636.87	5799799.02
	97.288	470637.85	5799798.82
	97.289	470638.83	5799798.63
	97.290	470639.81	5799798.44
	97.291	470640.79	5799798.25
	97.292	470641.78	5799798.05
Section 55:	97.293	470642.76	5799797.86
	97.781	471090.31	5799929.40
	97.782	471091.00	5799930.12
	97.783	471091.70	5799930.84
	97.784	471092.39	5799931.56
	97.785	471093.07	5799932.29
	97.786	471093.76	5799933.02
Section 56:	97.787	471094.45	5799933.74
	111.176	474346.18	5811582.93
	111.177	474347.18	5811582.95
	111.178	474348.18	5811582.97
	111.179	474349.18	5811582.99
	111.180	474350.18	5811583.01
Section 57:	111.181	474351.18	5811583.03
	114.390	477551.76	5811782.88
	114.391	477552.74	5811783.08
	114.392	477553.72	5811783.28
	114.393	477554.70	5811783.48
	114.394	477555.68	5811783.68
Section 58:	114.395	477556.66	5811783.88
	114.439	477599.45	5811794.10
	114.440	477600.41	5811794.36
	114.441	477601.38	5811794.63
	114.442	477602.34	5811794.89
	114.443	477603.30	5811795.16
Section 59:	114.444	477604.27	5811795.43
	114.445	477605.23	5811795.70
	118.336	481448.62	5812102.21

Section	KP	Easting [m]	Northing [m]
	118.337	481449.61	5812102.08
	118.338	481450.60	5812101.94
	118.339	481451.59	5812101.80
	118.340	481452.58	5812101.67
	118.341	481453.57	5812101.53
	118.342	481454.56	5812101.39
	118.343	481455.55	5812101.25
	118.344	481456.54	5812101.11
	118.345	481457.53	5812100.97
	118.346	481458.52	5812100.83
	118.347	481459.51	5812100.69
	118.348	481460.50	5812100.55
	118.351	481463.47	5812100.12
	118.352	481464.46	5812099.98
	118.353	481465.45	5812099.84
	118.354	481466.44	5812099.69
	118.355	481467.43	5812099.55
	118.356	481468.42	5812099.40
	118.358	481470.40	5812099.11
	118.359	481471.39	5812098.97
	118.360	481472.37	5812098.82
	118.361	481473.36	5812098.67
	118.362	481474.35	5812098.53
	118.363	481475.34	5812098.38
	118.364	481476.33	5812098.23
	118.365	481477.32	5812098.08
	118.366	481478.31	5812097.93
	118.367	481479.30	5812097.79
	118.368	481480.29	5812097.64
	118.369	481481.27	5812097.49
	118.370	481482.26	5812097.34
	118.371	481483.25	5812097.18
	118.372	481484.24	5812097.03
	118.373	481485.23	5812096.88
	118.374	481486.22	5812096.73
	118.375	481487.21	5812096.58
	118.376	481488.19	5812096.42
	118.378	481490.17	5812096.12
	118.379	481491.16	5812095.96
	118.380	481492.15	5812095.81
	118.381	481493.13	5812095.65
Section 60:	118.400	481511.89	5812092.62
	118.402	481513.86	5812092.29

Section	KP	Easting [m]	Northing [m]
	118.403	481514.85	5812092.13
	118.404	481515.84	5812091.96
	118.405	481516.82	5812091.80
	118.406	481517.81	5812091.63
	118.407	481518.79	5812091.47