

East Anglia TWO
Offshore Windfarm

Updated Statement of Community Consultation

Document Reference: EA2/DEVWF/CON/REP/IBR/000793

PROPOSED OFFSHORE WINDFARM

Statement of Community Consultation

How to have your say on the East Anglia TWO Offshore Windfarm

Prepared and published in accordance with Section 47 of the Planning Act 2008 and Regulation 12 of the Infrastructure Planning (Environmental Impact Assessment) Regulations 2017.

1 About this Statement of Community Consultation

1. This document is the updated Statement of Community Consultation (SoCC) for the proposed East Anglia TWO offshore windfarm. It explains how ScottishPower Renewables (SPR) will consult with local communities about its plans to develop the proposed East Anglia TWO offshore windfarm (East Anglia TWO).
2. This updated SoCC is a key part of SPR's ongoing stakeholder and public engagement process. This document is an update to the earlier SoCC, published in March 2018. SPR has consulted on its content with the local planning authorities (LPA) and the Marine Management Organisation (MMO).
3. An updated SoCC for another SPR project, the East Anglia ONE North offshore windfarm, has also been prepared. That SoCC has been published at the same time as this document.
4. SPR is committed to engagement with stakeholders and communities. To that end SPR has updated this SoCC to introduce recent project developments and to introduce an additional phase of consultation for local communities to comment on these developments. Community consultation will continue in accordance with this updated SoCC.
5. As with the original SoCC, this updated SoCC details the opportunities to come and meet SPR face to face and ask questions about East Anglia TWO, as well as ways in which local communities and stakeholders can engage with SPR and comment on the plans for the project.

A new consultation phase (Phase 3.5) is introduced in this SoCC, providing SPR the opportunity to engage with local communities on a number of recent proposed project developments, including:

- *Improvements being considered to parts of the local road network, which are outside the onshore study area detailed in the original SoCC. This means that new communities will now be added to the consultation process.*
- *Refinement of the proposed area required for National Grid Energy Transmission (NGET) to connect their proposed substation to the existing Overhead Line. This includes an area outside the previously presented onshore study area.*
- *Plans to run parallel consultation and stakeholder engagement, as well as parallel Preliminary Environmental Information (PEI) processes for East Anglia TWO and East Anglia ONE North.*
- *The opportunity to consider a new potential substation location between Sizewell and Leiston, as a possible alternative to the currently proposed substation site near Friston.*
- *Consideration of access options to the substation sites, including works in areas outside the previously presented onshore study area.*
- *Options to relocate the existing Sizewell C reptile mitigation land as part of the consideration of the potential alternative substation location.*
- *Options to ensure appropriate connection to the surface water drainage network.*

SPR welcomes the opportunity to discuss these project developments with our stakeholders and this document outlines our plans for consultation.

2 Background

6. SPR is progressing offshore windfarms throughout the world and onshore wind and marine energy projects in the UK. SPR is currently constructing the 102-turbine East Anglia ONE offshore windfarm approximately 43km off the coast of Suffolk.
7. This £2.5 billion project is planned to deliver energy to meet the annual demand of around 589,000¹ homes and should be fully operational in 2020. The East Anglia ONE windfarm will

¹ Calculated taking the number of megawatts (714) multiplied by the number of hours in one year (8,766), multiplied by the average load factor for offshore wind (36.7 %, published by the Digest of United Kingdom Energy Statistics), divided by the average annual household energy consumption (3,900 kWh), giving an equivalent of powering 588,980 homes.

be followed by the 1,200MW East Anglia THREE offshore windfarm which received development consent in summer 2017.

8. SPR now wishes to develop two further offshore windfarms off the coast of Suffolk, the proposed East Anglia ONE North and East Anglia TWO offshore windfarms. This updated SoCC is for East Anglia TWO.
9. **Figure 1**, below, shows the location of the East Anglia TWO site in relation to the proposed East Anglia ONE North site, the consented East Anglia THREE site and the East Anglia ONE site (under construction).

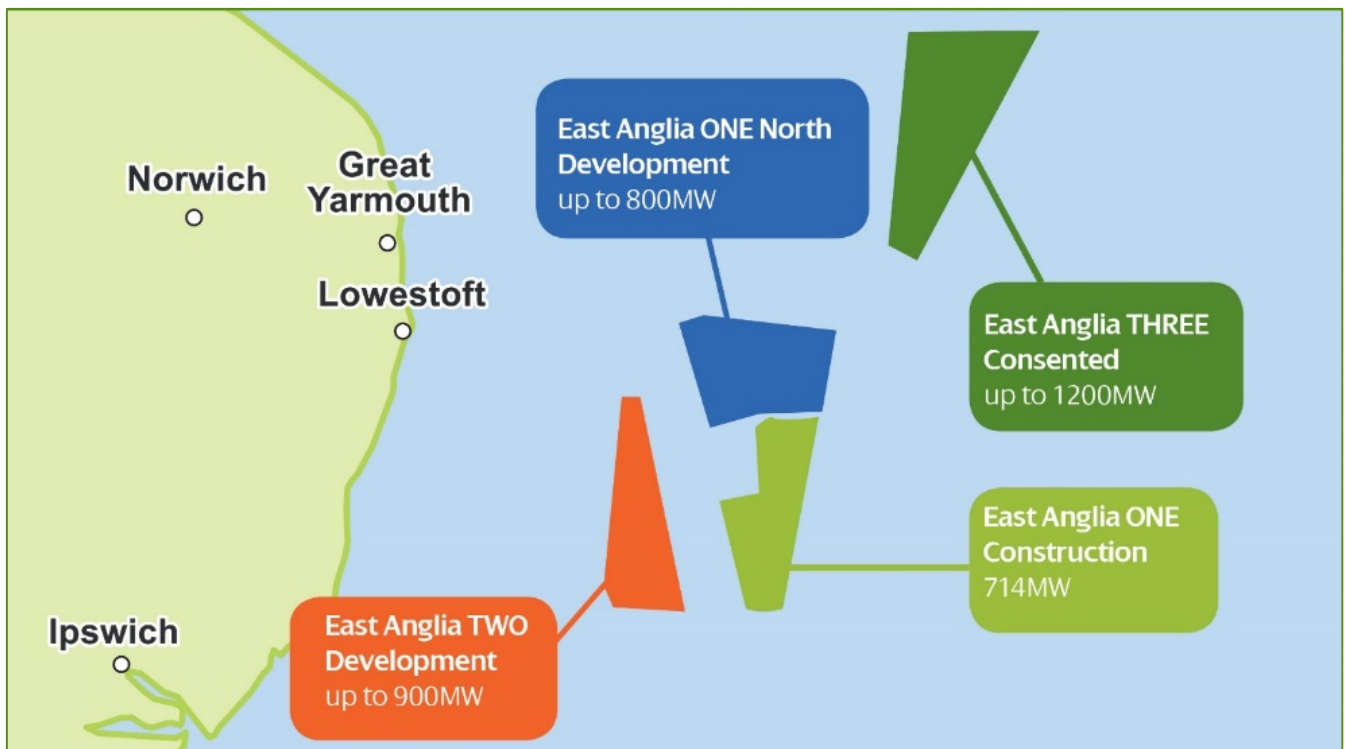


Figure 1 SPR East Anglia portfolio

10. As with the East Anglia ONE and East Anglia THREE offshore windfarm projects, consultation with local communities will play a major part in shaping East Anglia TWO and East Anglia ONE North.

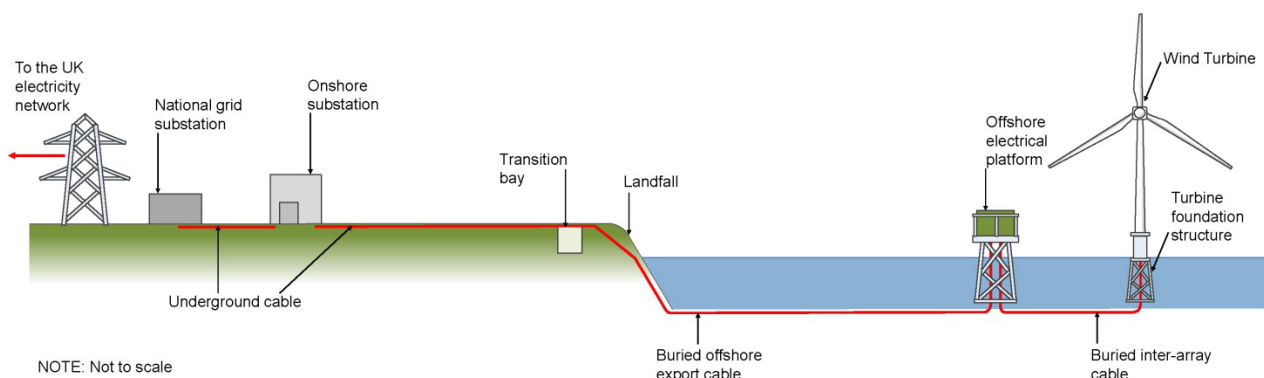
3 The Proposal

The proposed East Anglia TWO project is made up of the following elements:

- Up to 75 offshore wind turbines;
- Subsea inter-array cables;
- Offshore electrical platforms;
- Offshore export cables;
- Onshore transition bay;
- Onshore cable ducts, cable jointing bays and cables;
- Onshore substation;
- New onshore infrastructure (including the new substation and an upgrade to existing pylons) to connect to the existing electricity transmission network, which will be owned and operated by National Grid;
- Mitigation areas;
- Offsite highway improvements; and
- Other associated and ancillary development.

11. The East Anglia TWO windfarm site is approximately 255km² in area. At its nearest point, the East Anglia TWO windfarm site is 31km from Lowestoft and 32km from Southwold.
12. Within the East Anglia TWO windfarm site it is proposed that up to 75 wind turbines and an overall installed capacity of up to 900MW will be constructed. When operational the project would have the potential to provide up to 742,000² homes with power. From the wind turbines electricity would flow via subsea inter-array cables to a number of offshore electrical platforms and then to the shore via offshore export cables.
13. Offshore export cables will connect the offshore electrical platforms within the proposed East Anglia TWO windfarm site to shore, making landfall to the north of Thorpeness in Suffolk.
14. Once the offshore export cables reach the shore they will be joined to onshore cables via a transition bay near the point of landfall and then to a new onshore substation. From this substation the proposed East Anglia TWO project will then be connected into the transmission network via a new substation owned and operated by National Grid. In addition, there will be a requirement to alter the existing infrastructure to allow for connection to the existing Overhead Line transmission network in the vicinity of the proposed National Grid substation.
15. **Figure 2**, below, shows the components of the proposed project and their interrelationship.

² Calculated taking the number of megawatts (900) multiplied by the number of hours in one year (8,766), multiplied by the average load factor for offshore wind (36.7 %, published by the Digest of United Kingdom Energy Statistics), divided by the average annual household energy consumption (3,900 kWh), giving an equivalent of powering 742,410 homes.



16. SPR has identified an Updated Onshore Study Area for East Anglia ONE North and East Anglia

Figure 2 Key project elements

TWO, within which the above infrastructure could be located. Indicative areas for the location of that infrastructure within the Updated Onshore Study Area have been identified, as shown in **Appendix 1 Figure 1**.

17. The Updated Onshore Study Area now encompasses two potential locations for substations, which are under consideration. These include land to the north of Thorpeness at the landfall and extending inland approximately 9km, to the north of Friston, (marked as Indicative Onshore Development Area – Grove Wood, Friston substation). The Updated Onshore Study Area shown in Appendix 1 Figure 1 does not show all areas which may be required for temporary access, mitigation, enabling works compounds, vehicle marshalling areas, utility connections, road improvements or public footpath diversions, the need and location for which will be refined during consultation and through the Preliminary Environmental Information Report (PEIR) process.
18. An alternative substation location between Leiston and Sizewell is now also under consideration and the indicative development area for that substation is also shown in **Appendix 1 Figure 1** (marked as Indicative Onshore Development Area – Broom Covert, Sizewell substation).
19. The alternative substation location is located within the Suffolk Coast & Heaths Area of Outstanding Natural Beauty (AONB) and is in use by EDF Energy for the establishment of ecological mitigation required for the development of the Sizewell C nuclear power station.
20. Discussions with EDF Energy are ongoing and in parallel, SPR is engaging in a process of a specific site appraisal. As part of the assessment of this alternative substation location, alternative ecological mitigation land for the Sizewell C development will be considered. In addition to the onshore development area shown in **Appendix 1 Figure 1**, road and access improvements may also be required at a number of locations to allow construction of the project. **Appendix 1 Figure 2** highlights the road network that is currently being assessed to identify potential areas that may require improvement. **Appendix 1 Figure 1** shows an indicative area under consideration for access from the substation to the north of Friston and an indicative area for surface water drainage from the substation to the north of Friston.

21. The consent application for East Anglia TWO will include all of the elements described above (including the associated National Grid infrastructure).
22. Temporary works and ancillary infrastructure necessary for the construction and operation of the project, such as temporary construction areas onshore shall be included.
23. Onshore, SPR is committed to undergrounding the cables between the cable landfall and the SPR substation with the benefit of avoiding landscape and visual impacts associated with overhead lines.

4 The Planning Process

24. East Anglia TWO is a Nationally Significant Infrastructure Project (NSIP) and therefore SPR will apply for a Development Consent Order (DCO).
25. SPR will submit a DCO application to the Planning Inspectorate (PINS) who will, in turn, consider a number of factors when deciding whether to accept the application. These include whether pre-application consultation carried out by SPR with statutory consultees and local communities fulfils the consultation requirements found in sections 42 and 47 of the Planning Act 2008.
26. Once the application is accepted for examination, PINS will appoint an Examining Authority, made up of a panel of inspectors, to co-ordinate the examination of SPR's application.
27. Following the examination, the Examining Authority will make a recommendation to the Secretary of State for Business, Energy and Industrial Strategy (BEIS) who will then make a decision on whether to grant the DCO.
28. Following publication of this updated SoCC, East Anglia TWO will continue with its pre-application consultation activities in advance of submitting the DCO application which is currently scheduled for the last quarter of 2019.
29. Further information on the Planning Process can be found on the PINS website, specifically in Advice Note 8.³

5 Who will SPR consult

30. Anyone who feels directly or indirectly impacted by the East Anglia TWO proposal is invited to send SPR their comments.
31. SPR will consult with individuals and communities living within the vicinity of the land affected by the DCO application, or who have taken an active interest in East Anglia TWO.
32. The geographical area of engagement, within which consultation will focus, has been influenced by the following considerations:

³ <https://infrastructure.planninginspectorate.gov.uk/legislation-and-advice/advice-notes/>

1. The Onshore Consultation Zone: This has been determined by defining the Zone of Theoretical Visibility (ZTV), shown in **Appendix 1 Figure 3**.

This output of computer modelling identifies where it is theoretically possible to see the offshore wind turbines from, in very good or excellent visibility conditions.

2. Updated Onshore Study Area: This is the area within which onshore infrastructure for East Anglia ONE North, East Anglia TWO and National Grid could be placed, as shown in **Appendix 1 – Figure 1**.

SPR is refining the onshore development area and identifying areas suitable for mitigation purposes should they be required. This is a key function of the consultation process.

3. The Offshore Consultation Zone: **Appendix 1 Figure 4** shows areas of the East Anglia TWO offshore wind farm and its associated export cable corridor. This is the area within which offshore infrastructure will be placed.

4. Consideration of an alternative substation location with consideration of a site near Friston and an alternative between Leiston and Sizewell. **Appendix 1 Figure 1** shows the location of the alternative substation location between Leiston and Sizewell (marked as 'Indicative Onshore Development Area – Broom Covert, Sizewell'). Discussions regarding use of this land, which is owned by EDF Energy, are ongoing. In parallel SPR is undertaking specific site appraisal works at this site.

5. Traffic and Transport Improvement Works. To facilitate access for construction works, a number of improvements to roads may be required. **Appendix 1 Figure 2** shows the road network that is currently being assessed to identify potential areas that may require improvement, and it can be seen that it is more extensive than the Updated Onshore Study Area (**Appendix 1 Figure 1**). As a result, community consultation will be expanded to include the parish council areas through which the part of the road network currently being assessed passes. Details of consultation proposed are provided in section 6, below. **Appendix 1 Figure 1** also shows an indicative area under consideration for access to the substation to the north of Friston.

33. SPR is consulting with relevant Parish and Town Councils, community groups, organisations representing the local business communities and tourist boards. We obtained input from the Local Planning Authority to identify these organisations and groups.

34. As well as community consultation, SPR will discuss East Anglia TWO with a number of statutory and non-statutory consultees, including:

1. Local Authorities;
2. Owners, tenants and occupiers of the land affected by the DCO application;
3. Commercial stakeholders (including land owners and the fishing industry via SPR's Commercial Fisheries Working Group); and
4. Environmental organisations.

35. This updated SoCC will be available to view at the following organisations and locations.

Aldeburgh Library	Little Glemham Parish Council
Aldeburgh Town Council	Lowestoft Library
Aldringham-cum-Thorpe Parish Council	Marlesford Parish Council
Benhall and Sternfield Parish Council	Martins Saxmundam
Darsham Parish Council	Middleton cum Fordley Parish Council
Farnham with Stratford St Andrew Parish Council	Orford Town Council
Felixstowe Library	Saxmundham Library
Felixstowe Town Council	Saxmundham Town Council
Friston Parish Council	SCDC Customer Services @ Woodbridge Library
Great Yarmouth Borough Council	Snape Parish Council
Great Yarmouth Central Library	Southwold Library
Kelsale cum Carlton Parish Council	Southwold Town Council
Kessingland Library	Theberton and Eastbridge Parish Council
The Village Store Kessingland	The Butchers Arms, Knodishall
Leiston Town Council	Yoxford Parish Council

6 What Will SPR Consult You About?

36. SPR is asking for your comments and suggestions on all aspects of the East Anglia TWO project. Our planned consultation events are outlined below, with details on how you can contact SPR directly provided in Section 8.

37. SPR started informally consulting with local communities in 2017 and began statutory consultation in March 2018, following advertisement of the first version of the SoCC. This updated SoCC is now being published and its publication advertised as required by section 47 of the Planning Act 2008.

38. The Consultation Strategy for East Anglia TWO is focused around dual objectives:

- Consulting on the development of the East Anglia ONE North project; and
- Refinement of the Indicative Onshore Development Area for potential locations for the onshore infrastructure and the cable route.

39. The consultation has been split into the following phases, some of which have been completed.

6.1 Phase One Consultation (Non-Statutory i.e. Prior to Commencement of Section 47 Consultation)

40. SPR completed a phase of early, non-statutory engagement in the area of search for onshore infrastructure for four main reasons:

1. To introduce East Anglia TWO to new stakeholders;
2. To consult on potential constraints to the locations for onshore infrastructure;
3. To explain the Environmental Impact Assessment Scoping process; and
4. To introduce the projects to those potentially impacted by the visual aspects of the offshore windfarm.

41. To do this SPR took the following actions:

- Telephone calls, briefings, meetings and sharing of a leaflet with a wide range of statutory and non-statutory stakeholders: County, Borough, District, Town, Parish Councils; Visit East Anglia; The Suffolk Coast Destination Management Organisation and the New Anglia Local Enterprise Partnership;
- We held Public Information Days locally on 30th and 31st October and 1st and 2nd November 2017; and
- Produced a Summary of Environmental Considerations document to support East Anglia ONE North in early engagement activities. All the materials presented are still accessible at the website below.

www.scottishpowerrenewables.com/pages/east_anglia_two.aspx

6.2 Phase Two Consultation (Statutory Consultation Stage 1)

42. This Phase represented the commencement of statutory consultation. SPR held a series of Public Information Days in March 2018. Members of the East Anglia TWO project team were on hand to answer questions and collect people's views via feedback forms.
43. The March 2018 events provided further information on the Indicative Onshore Development Area displaying the substation zones within which SPR intended to site the projects' onshore electrical infrastructure, and also sought opinions on the viewpoints selected to assess the visual impact of the offshore wind turbines.
44. The March 2018 events were advertised in the East Anglian Daily Times and the Lowestoft Journal. SPR provided flyers to Aldringham-cum-Thorpe Parish Council and Knodishall Parish Council to facilitate promotion of the events and posters were displayed across the ZTV area.
45. SPR also sought to engage with the 'Hard-to-Reach' audience, including tourists, second home owners, parts of the working population, those with disabilities, and those with limited internet access, by deploying a maildrop to the towns of Southwold, Thorpeness, Aldeburgh, Sizewell, Reydon, Walberwick and Orford.
46. In order to further attract the attention of this audience, the Public Information Days in March 2018 were also held over a weekend at the start of the Easter holidays.

6.3 Phase Three Consultation (Statutory Consultation Stage 2)

47. SPR held a second phase of statutory consultation in June and July 2018.
48. SPR held Public Information Days to show the Indicative Onshore Development Area for onshore infrastructure, including the proposed substation location to the north of Friston, and to update consultees on the proposed development plans generally.
49. Ongoing engagement with statutory and non-statutory bodies including landowners and Parish Councils, as well as the Commercial Fisheries Working Group, continued in parallel.
50. The refined Indicative Onshore Development Area, the proposed approach of parallel consenting of East Anglia TWO alongside East Anglia ONE North, and the timing of parallel consultation on Preliminary Environmental Information were all shared at the June / July Public Information Days.
51. The period between the June and July Public Information Days and Phase Four Consultation will allow for further refinement of the project. Phase 3 concluded on the 28th of August.

6.4 Phase 3.5 Consultation (Statutory Consultation Stage 2.5)

52. SPR has chosen to carry out an additional phase of consultation between Phase 3 and Phase 4 consultation, described as Phase 3.5.
53. Phase 3.5 consultation will be undertaken from 29th of September to the 29th October 2018. Associated changes to the proposed programme for consultation are detailed in **Figure 3 below**.
54. Phase 3.5 will involve consulting the local communities on the recent project developments introduced earlier in this SoCC.
55. Consultation will include the following:
 - Provision of paper copies of this SoCC and additional materials regarding project developments with the organisations and at the locations, provided earlier in this SoCC (paragraph 36);
 - Mail drop to local communities of materials including:
 - Covering letter;
 - A leaflet detailing key aspects of project developments being consulted on during Phase 3.5;
 - A feedback form to allow communities to express their comments and opinion to SPR;
 - A series of public meetings in October 2018, at which interpretative materials (such as photomontages) will be available to the public, and it will be possible to discuss the proposals with members of the SPR team;

- All interpretive materials (such as photomontages) will also be available on line at www.scottishpowerrenewables.com/pages/east_anglia_two.aspx

56. The results of master planning exercises for the Friston substation location and also for the alternative location between Leiston and Sizewell will be made available to stakeholders and consulted upon. Master planning will include the development of photomontages to facilitate discussions and comments.
57. Current understanding of works required by National Grid to achieve connection at both Friston and the Sizewell alternative will also be presented.
58. The alternative substation location between Leiston and Sizewell would make use of land areas currently part of mitigation measures for the Sizewell C power station. SPR will consider the requirement for alternative mitigation land to be identified if the alternative substation location were taken forward and consult with stakeholders, including local communities.
59. The communities within the areas where Traffic and Transport Improvements may be undertaken will be included within planned consultation.
60. Proposed arrangement for connecting site drainage to local drainage networks and access to the substation site will also form part of ongoing consultation.

6.5 Phase Four Consultation (Statutory Consultation Stage 3)

61. Phase Four of the consultation for East Anglia ONE North and East Anglia TWO will begin in early 2019.
62. East Anglia TWO is an Environmental Impact Assessment Development (known as an “EIA Development”) and legislation therefore requires that SPR undertakes an Environmental Impact Assessment (EIA) to identify likely significant environmental effects of the project. The results of the EIA will be published in an Environmental Statement (ES) that will accompany the DCO application for the proposed project.
63. As part of its pre-application consultation, SPR will publish and consult upon Preliminary Environmental Information for the project. This Preliminary Environmental Information will include details of the preliminary environmental assessment findings, a description of the proposals and baseline environmental information collected (to date). It will identify the potential impacts of East Anglia TWO, including cumulative impacts as relevant, and where necessary will also identify possible measures to reduce, prevent or offset these. It will include information on the scope for any associated land restoration, landscaping and other mitigation measures if required.
64. The Preliminary Environmental Information will be consulted upon along with other details of the proposed DCO application consulted on pursuant to section 42 of the Planning Act 2008.

65. SPR will directly consult statutory consultees and the prescribed consultation bodies (for example the Marine Management Organisation, Natural England, the Environment Agency, etc.), local authorities and landowners.
66. SPR will also consult the local communities, wider public and other organisations via rounds of newspaper notices and via publishing the documentation on its website. During this Phase, further Public Information Days will be held to communicate the findings of SPR's environmental assessment process and to communicate the proposed project details.
67. A period for representations to be made on the Preliminary Environmental Information) and section 42 consultation documents will be provided. SPR will consider any representations received at Public Information Days or via consultation responses before finalising the DCO application and ES for submission.
68. Following this final phase of pre-application consultation the DCO application (and accompanying ES) will be submitted. When the application is submitted and the EIA is published there will be an opportunity to make representations to PINS.
69. In addition to the Public Information Days outlined above, through all phases of consultation SPR will provide updates on the development of East Anglia TWO on its website, and regarding its portfolio of projects via the publishing of its biannual newsletter, The East Angle. SPR will also respond positively to requests for engagement at Parish Council meetings and to present to local interest groups.
70. An integrated summary of activities is shown below.

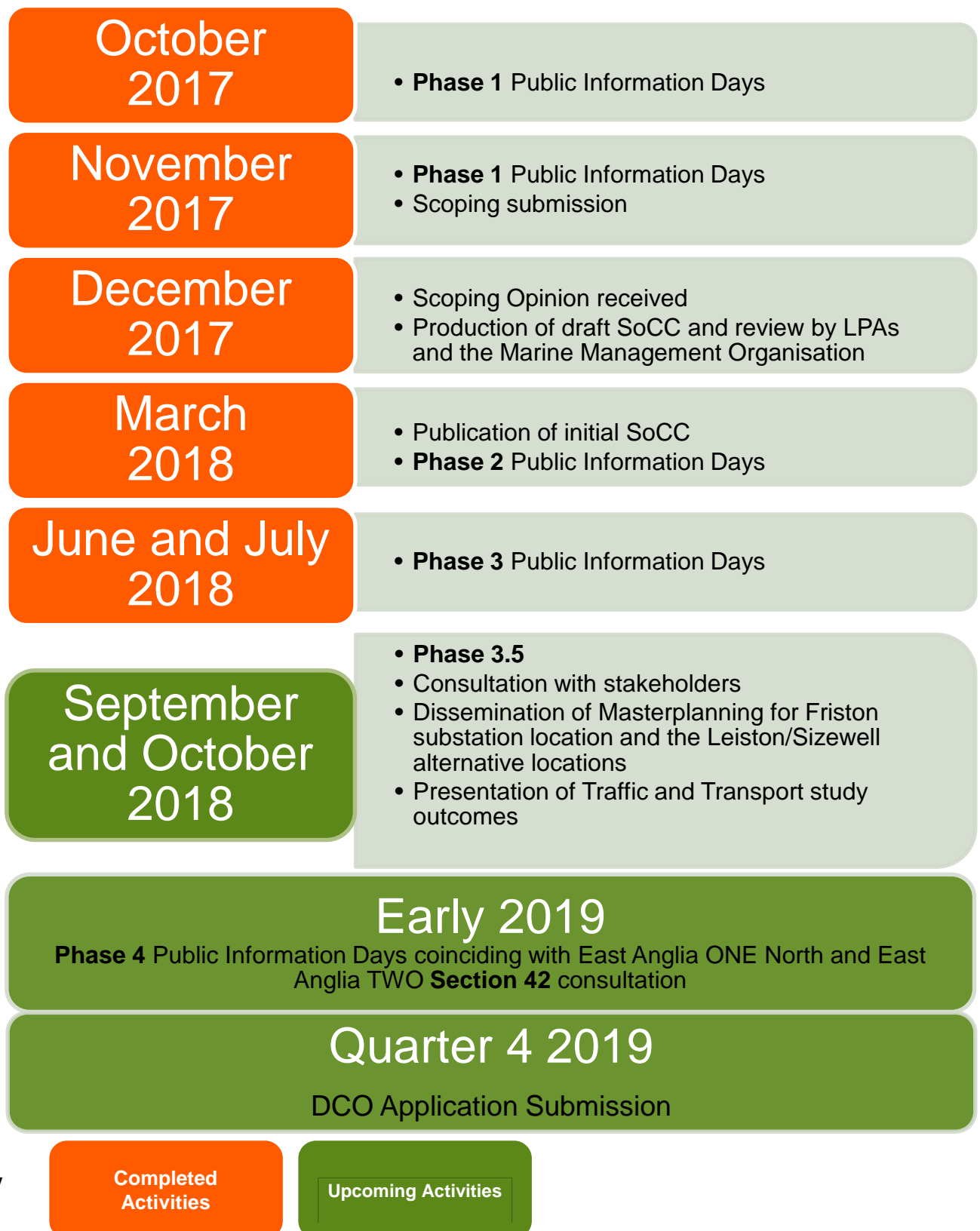


Figure 3 Summary of activities

6.6 Special Events / Targeted Consultation

71. SPR takes consultation very seriously as a scheduled part of the development programme.
72. SPR knows that there are often consultation opportunities that arise outside of organised consultation. For example, occasional visitors to the area and interest groups that meet on an infrequent basis may not have the opportunity to attend scheduled events. For this reason, SPR will monitor potential wider consultation opportunities and engage as appropriate.
73. There may also be particular circumstances that arise during pre-application consultation or which are localised in nature and SPR may wish to carry out non-statutory targeted consultation.

7 Responding To Your Comments

74. Following each phase of consultation, SPR will reflect on any feedback to shape and inform the proposals. A Summary of Feedback will be published on the SPR website following each phase of consultation.
75. Consultees can respond to the consultation either in person (at Public Information Days where appropriate) or via email or post (contact details are set out below).
76. Where consultees approach SPR by email or mail, SPR will acknowledge communication and endeavour to respond fully to the consultee, if required, within one calendar month.
77. All comments and information received by SPR during the consultation will be recorded in a consultation database and be considered by SPR. As part of its DCO application, SPR will provide a Consultation Report to explain how the views received have been considered in the East Anglia TWO design process and EIA. If an issue has not resulted in a change to the proposed development, the Consultation Report will explain this. As there may be a large number of responses, the Consultation Report may group comments into broad issues of concern.
78. Please note that all communications may be made publicly available; however, SPR will not share individuals' data (although SPR may indicate the general area of an individual's location for context).
79. In making representations to SPR, stakeholders should make clear whether they are commenting on the East Anglia ONE North project, East Anglia TWO project or both projects.

8 Contacting SPR

8.1 General Enquiries

SPR has a Stakeholder Manager for East Anglia TWO, Joanna Young, who can be contacted:

Via email:
eastangliatwo@scottishpower.com

Online:
https://www.scottishpowerrenewables.com/pages/east_anglia_two.aspx

Or mail via Freepost address:

ScottishPower Renewables East Anglia
TWO
RTLY-RLGH-GKSE
FREEPOST
25 Priestgate
Peterborough
PE1 1JL

8.2 Fishing Related Enquiries

SPR has a Fishery/Fishing Liaison Officer for East Anglia TWO, Jonathan Keer who can be contacted:

Via email: Jonathan@brownmay.com

Or mail via address:

Jonathan Keer
East Anglia TWO FLO
For and on behalf of ScottishPower
Renewables
Brown & May Marine
Progress Way
Mid Suffolk Business Park
Eye, Suffolk, IP23 7HU

8.3 Land Related Enquiries

SPR has a Manager responsible for land related issues associated with East Anglia TWO, Gillian Lang, who can be contacted:

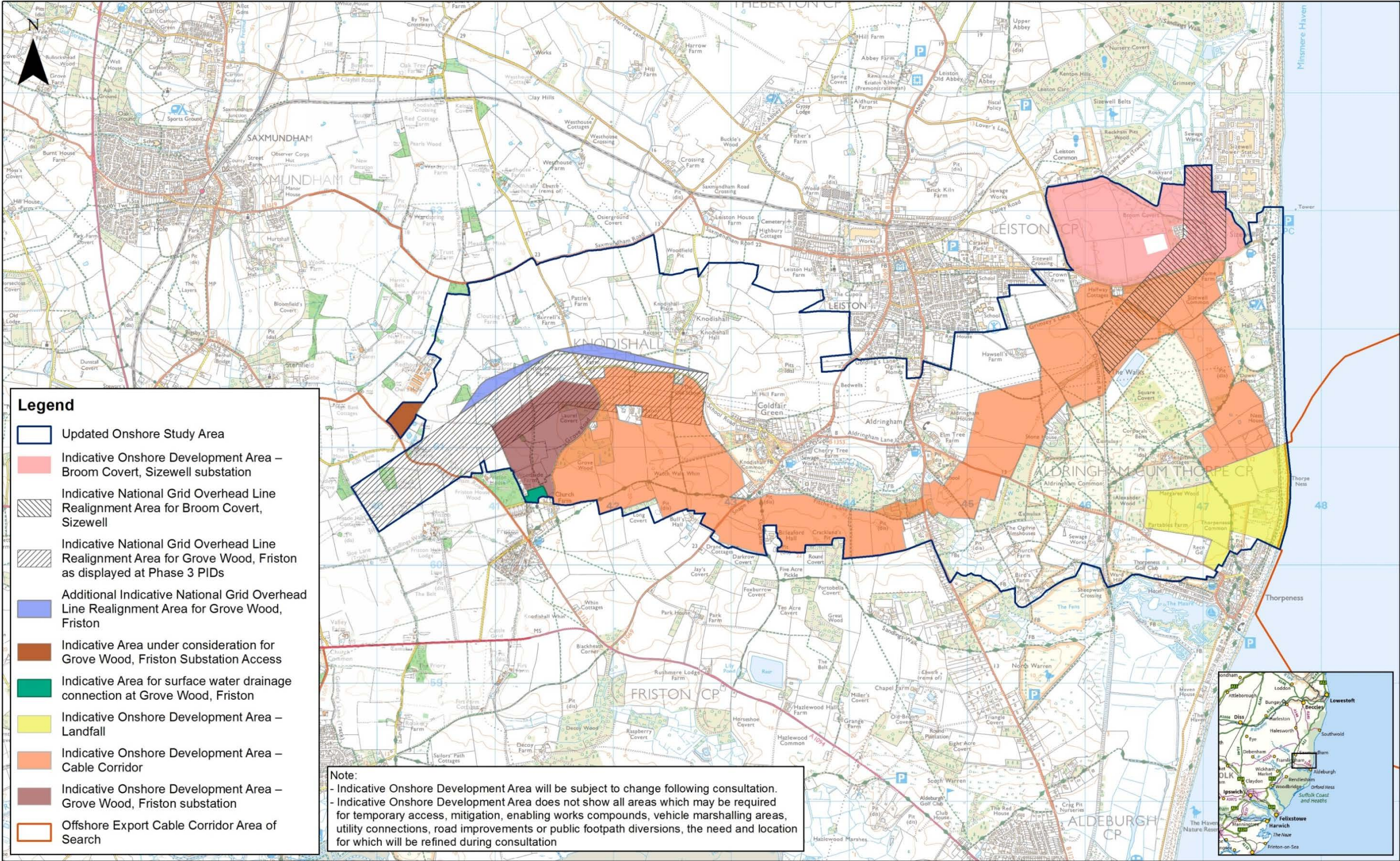
Via email:
eastanglialand@scottishpower.com



Or mail via address:

Gillian Lang
ScottishPower Renewables
ScottishPower House
320 St Vincent St
Glasgow, G2 5AD

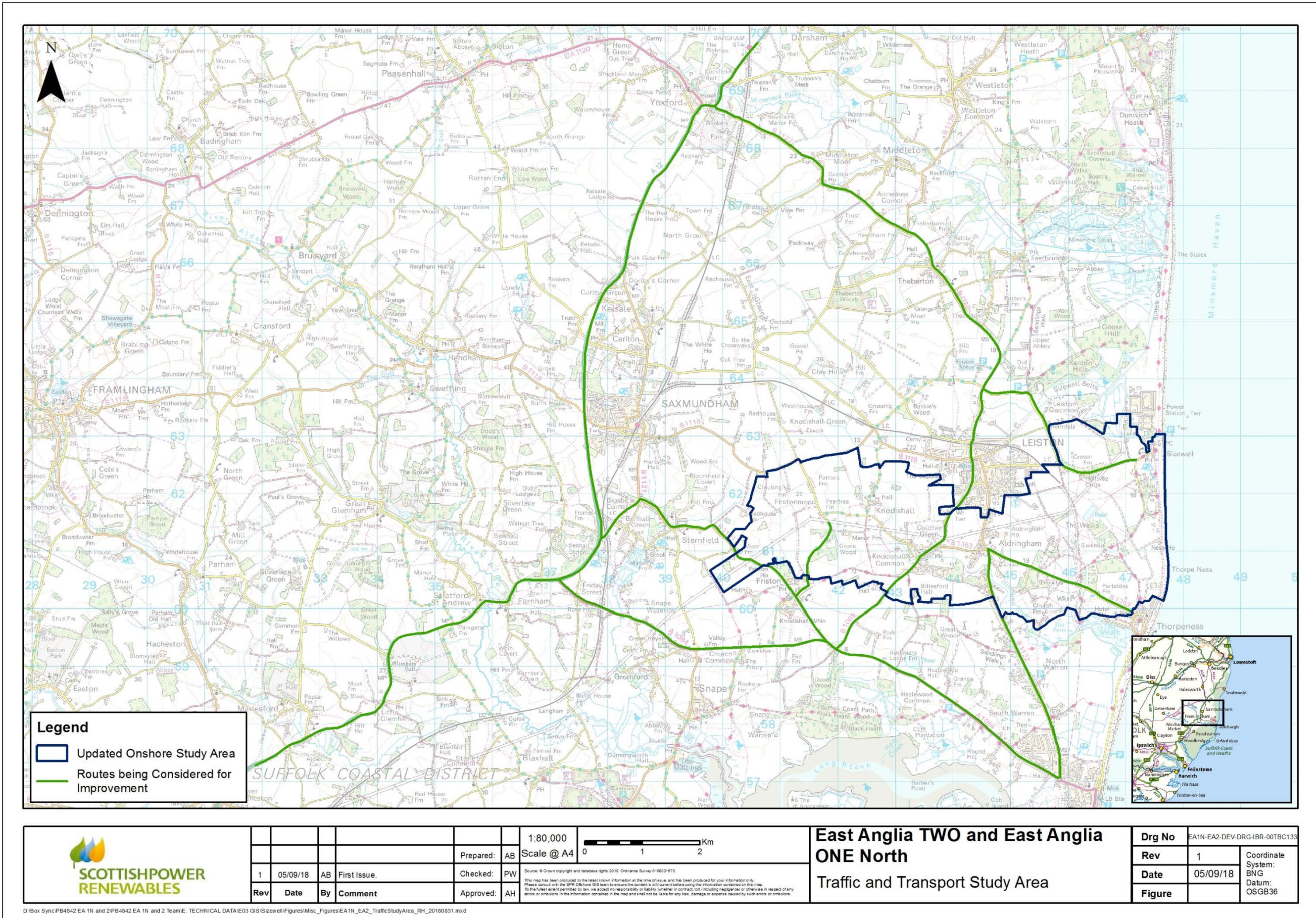
9 Appendix 1 – Figures

This page is intentionally blank

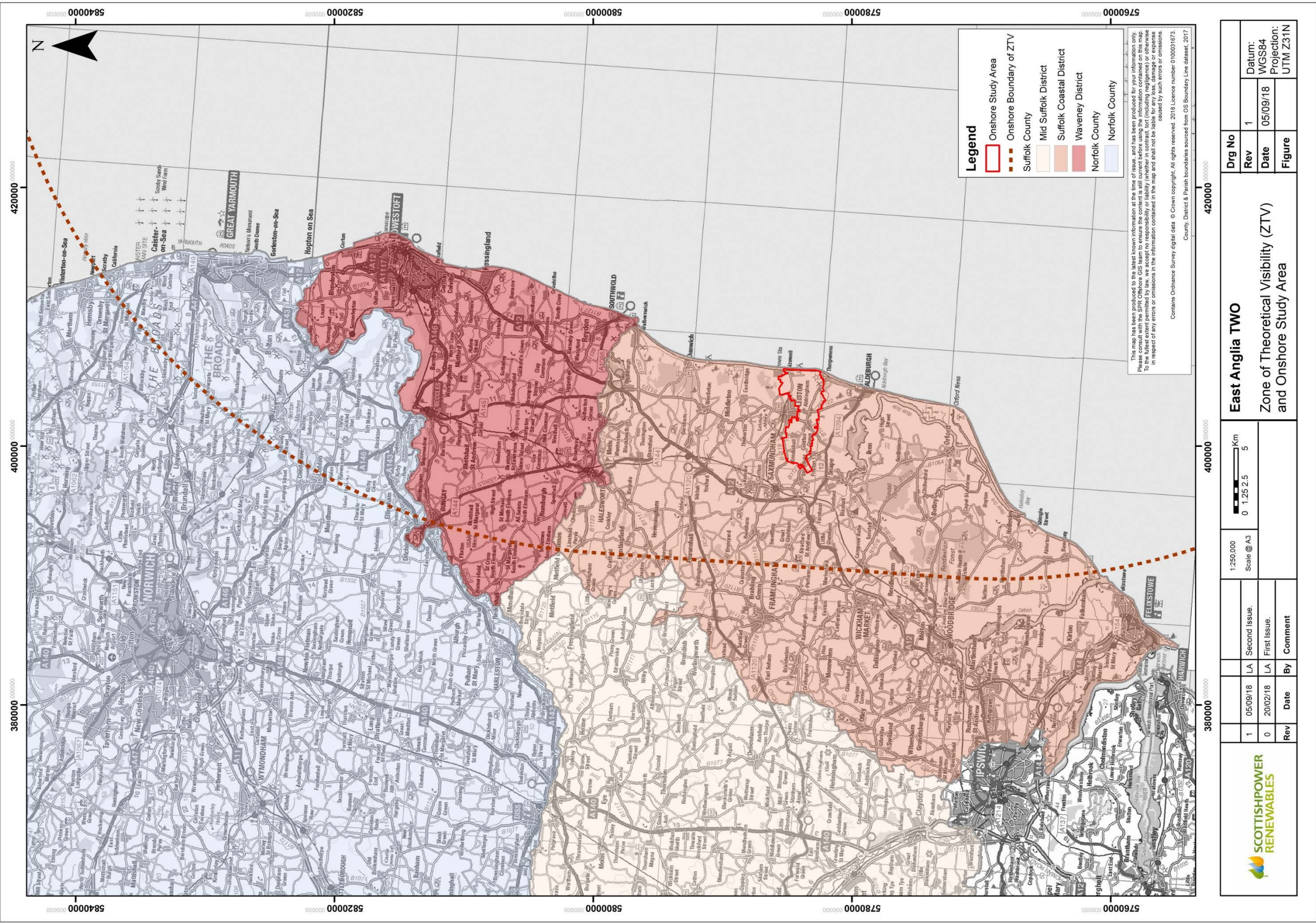


	3	05/09/18	AB	First Issue.			1:30,000		East Anglia ONE North and East Anglia TWO	Drg No	EA1N-EA2-DEV-DRG-IBR-00TBC127		
	2	08/08/18	AB	First Issue.		Prepared:	AB			Scale @ A3	Rev	3	Coordinate System: BNG
	1	07/08/18	AB	First Issue.		Checked:	BH			Source: © Crown copyright and database rights 2018. Ordnance Survey 0100031673.	Date	05/09/18	Datum: OSGB36
	Rev	Date	By	Comment		Approved:	AH			This map has been produced to the latest known information at the time of issue, and has been produced for your information only. Please consult with the SP4C Cellium GIS team to ensure the content is not current before using the information contained on this map. To the fullest extent permitted by law, we accept no responsibility or liability whether in contract, tort (including negligence) or otherwise in respect of any errors or omissions in the information contained in the map and shall not be liable for any loss, damage or expense caused by such errors or omissions.		Project Components	

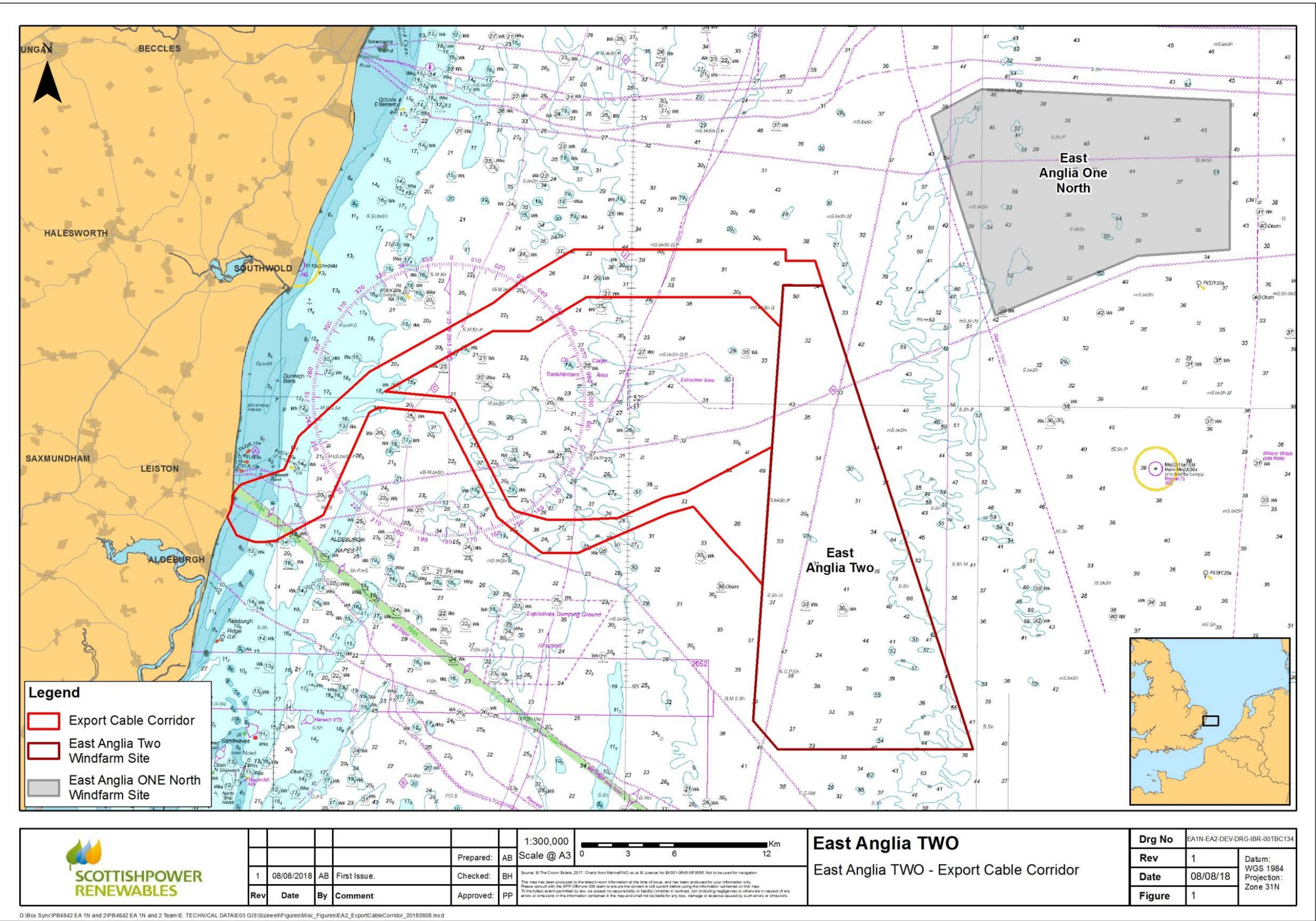
Appendix 1 Figure 1 Updated Onshore Study Area



Appendix 1 Figure 2 Traffic and Transport Improvement Works Study Area



Appendix 1 - Figure 3 Onshore Consultation Zone



Appendix 1 - Figure 4 Offshore Consultation Zone

This page is intentionally blank

ScottishPower Renewables

ScottishPower House
320 St Vincent Street
Glasgow
G2 5AD

T 0141 614 0000

eastangliatwo@scottishpower.com

www.scottishpowerrenewables.com

