

# **East Anglia TWO Offshore Windfarm**

## **Chapter 30**

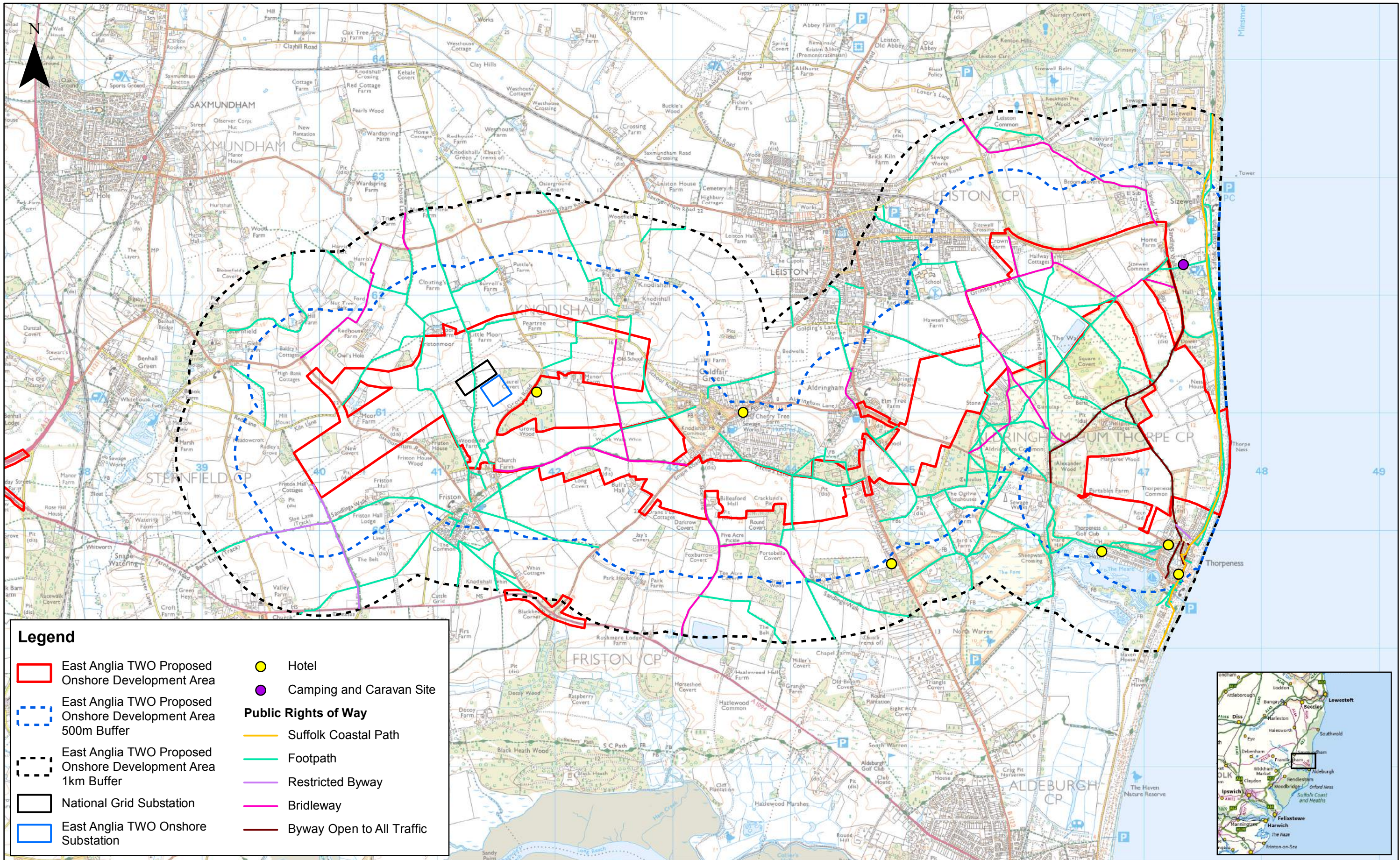
**Tourism, Recreation and Socio-  
Economics**


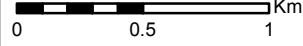
### **Figures**

**Preliminary Environmental Information  
Volume 2**

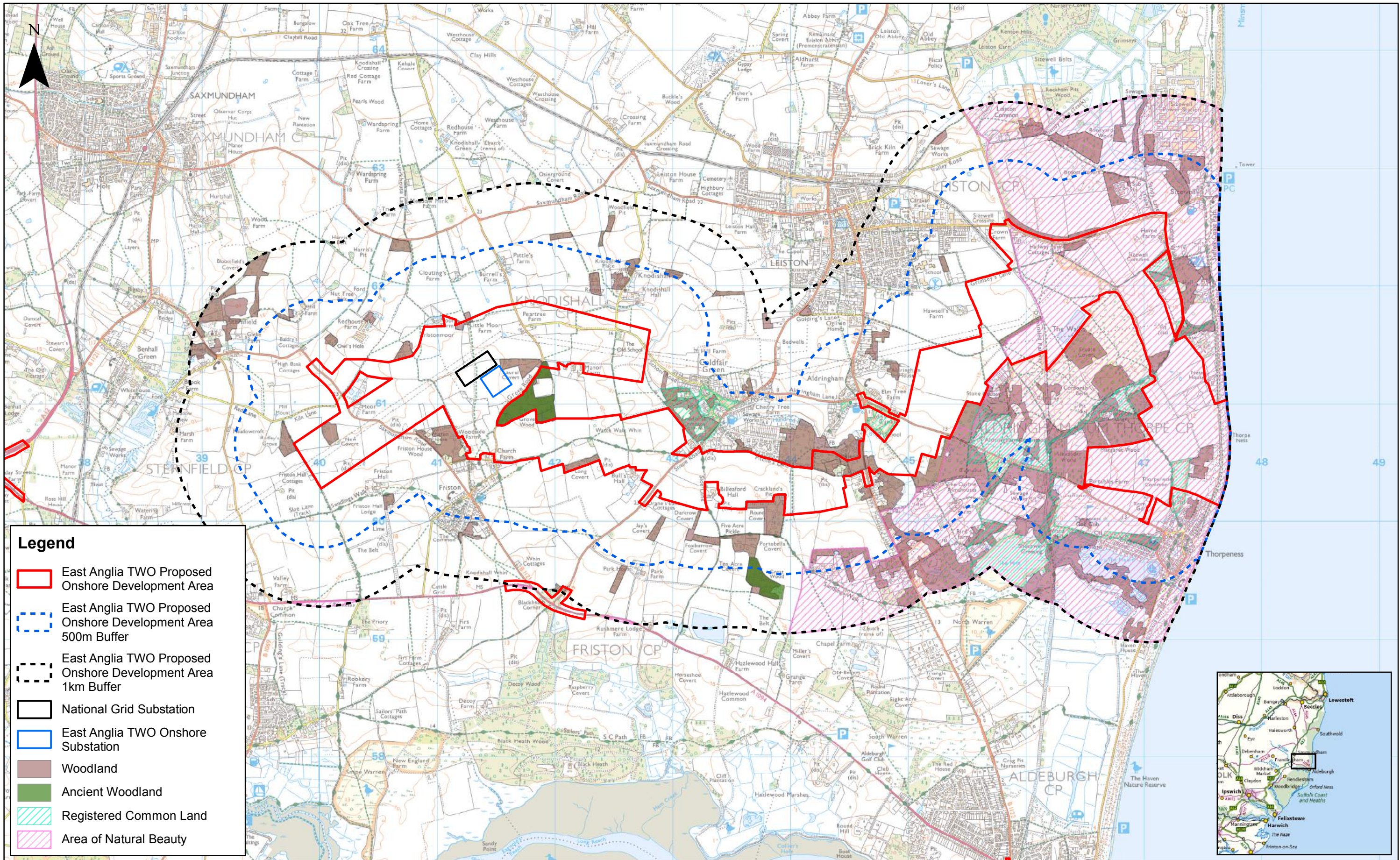
**This page is intentionally blank**





				1:30,000 Scale @ A3				<b>East Anglia TWO</b> Tourism Assets in the Vicinity of the Proposed Onshore Development Area		<b>Drg No</b>	EA1N-EA2-DEV-DRG-IBR-00TBC85	
2	14/11/2018	FC	Second Issue.	Prepared:	FC	<small>This map has been produced to the latest known information at the time of issue, and has been produced for your information only. Please consult with the SPR Onshore GIS team to ensure the content is still current before using the information contained on this map. To the fullest extent permitted by law, we accept no responsibility or liability (whether in contract, tort (including negligence) or otherwise in respect of any errors or omissions in the information contained in the map and shall not be liable for any loss, damage or expense caused by such errors or omissions.</small>				<b>Rev</b>	2	Coordinate System: BNG Datum: OSGB36
1	05/09/2018	FC	First Issue.	Checked:	DS					<b>Date</b>	14/11/18	
<b>Rev</b>	<b>Date</b>	<b>By</b>	<b>Comment</b>	<b>Approved:</b>	<b>AH</b>					<b>Figure</b>	30.1	

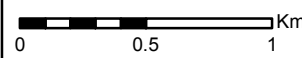




2	14/11/2018	FC	Second Issue.
1	05/09/2018	FC	First Issue.
Rev	Date	By	Comment

Prepared:	FC
Checked:	DS
Approved:	AH

1:30,000  
Scale @ A3



Source: © Natural England, 2018. Contains, or is based on, information supplied by the Forestry Commission © Crown copyright and database rights 2018. Ordnance Survey 0100031673.  
This map has been produced to the latest known information at the time of issue, and has been produced for your information only. Please consult with the GPR Onshore GIS team to ensure the content is still current before using the information contained on this map. To the fullest extent permitted by law, we accept no responsibility or liability (whether in contract, tort (including negligence) or otherwise in respect of any errors or omissions in the information contained in the map and shall not be liable for any loss, damage or expense caused by such errors or omissions.

## East Anglia Two

Natural Assets in the Vicinity of the Proposed Onshore Development Area

Drg No	EA1N-EA2-DEV-DRG-IBR-00TBC86		
Rev	2	Coordinate System: BNG Datum: OSGB36	
Date	14/11/18		
Figure	30.2		







