



**SCOTTISHPOWER
RENEWABLES**

East Anglia TWO Offshore Windfarm

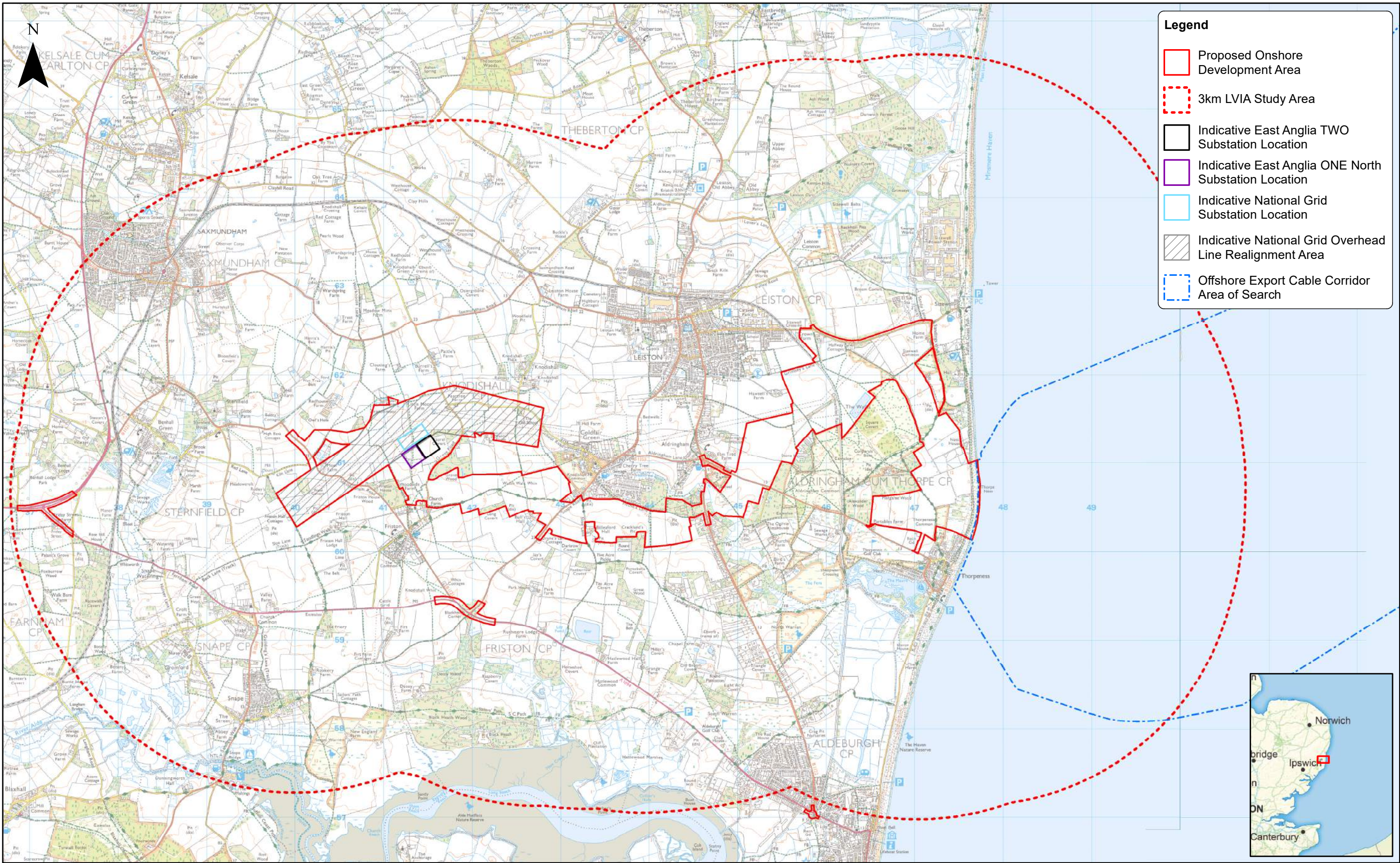
Chapter 29



Landscape and Visual Impact

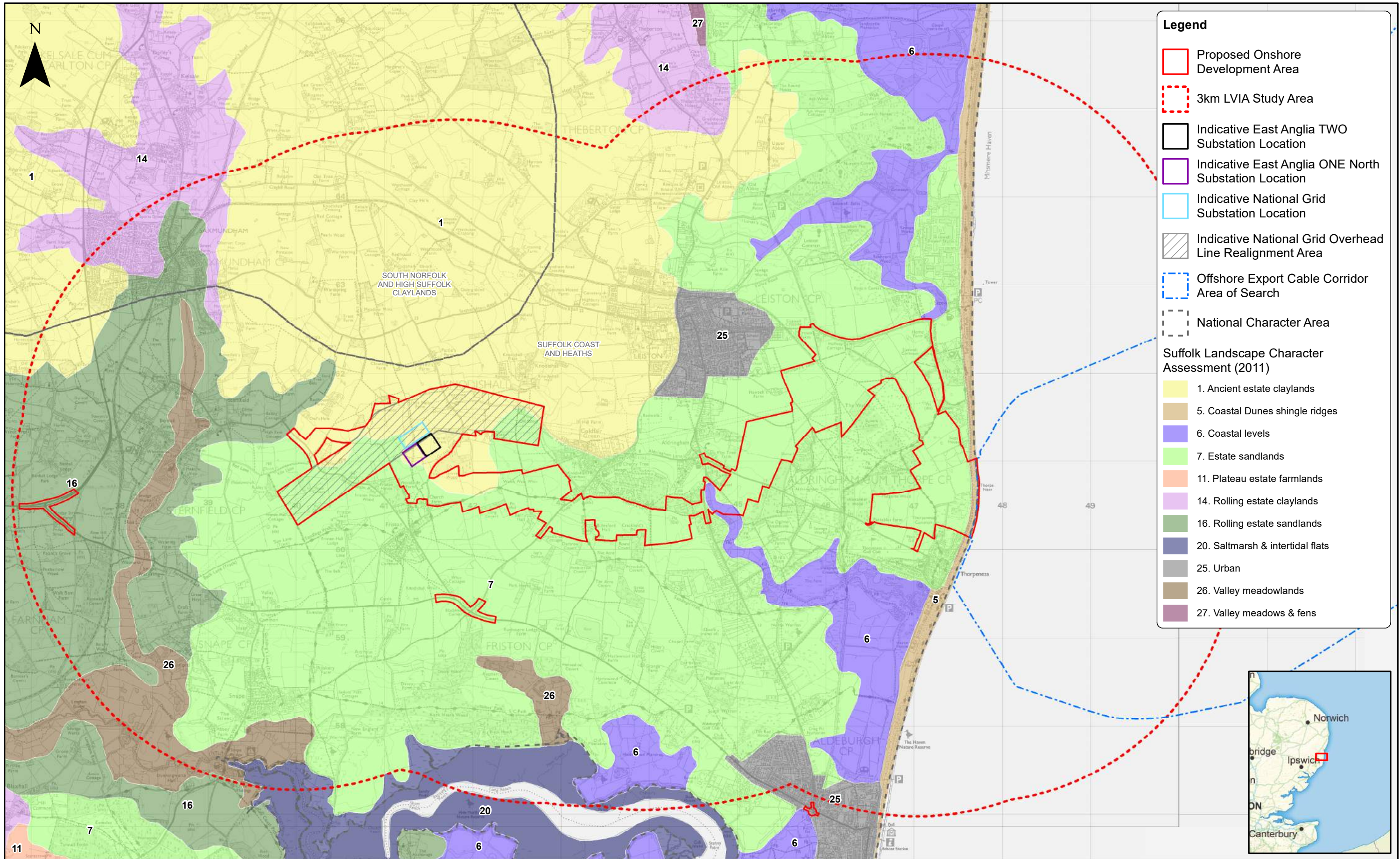
Figures



**Preliminary Environmental Information
Volume 2**

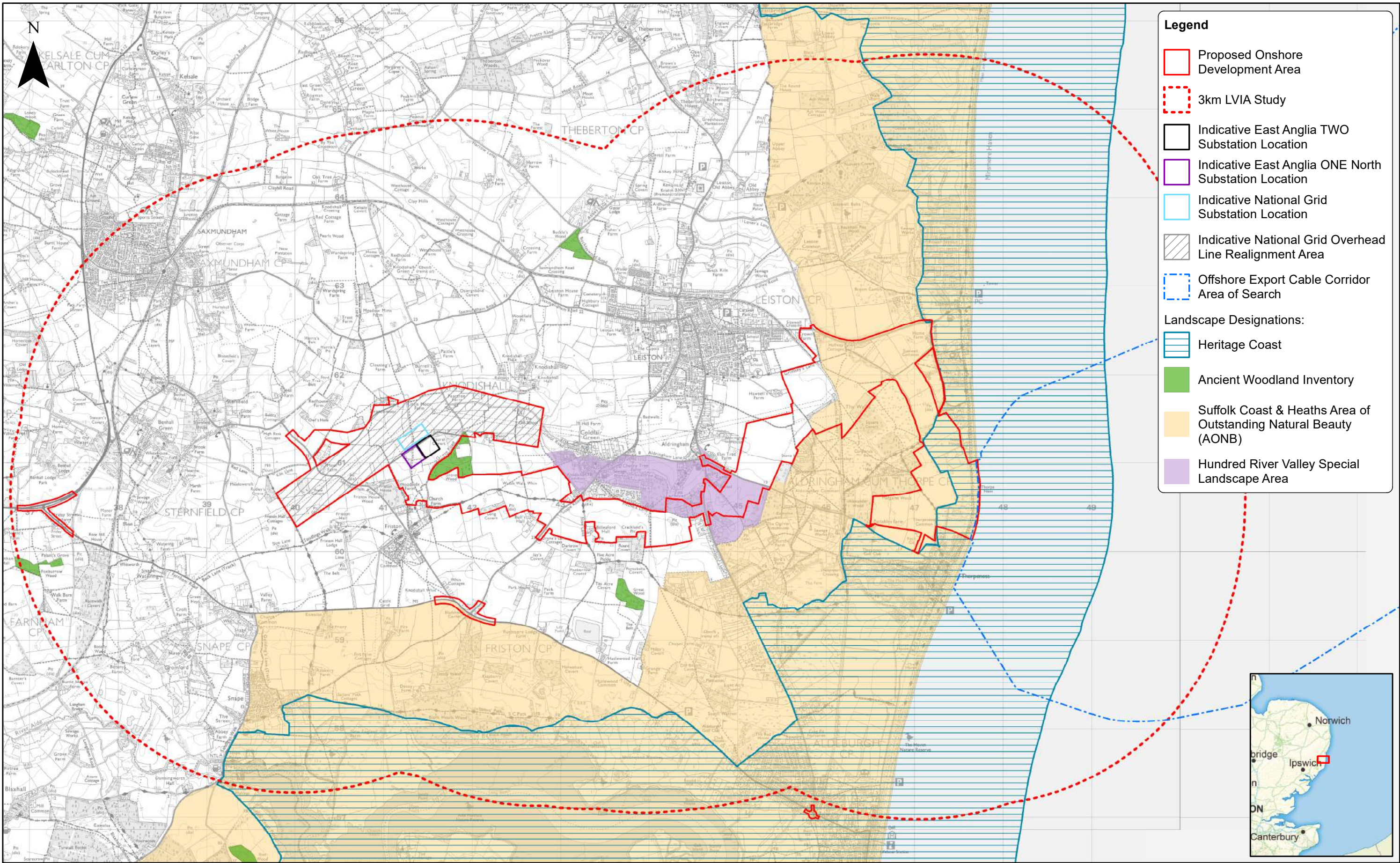
This page is intentionally blank



	5	17/01/2019	TH	Document Reference Update			1:40,000		<h1>East Anglia TWO</h1> <h2>LVIA Study Area</h2>	Doc Ref	EA2-DEVWVF-ENV-REP-IBR-000824	
	4	06/12/2018	LA	Fifth Issue (OPEN)	Prepared:	LA	Scale @ A3			Rev	5	Datum: OSGB 1936 Projection: BNG
	3	22/11/2018	LA	Fourth Issue (OPEN)	Checked:	SM	<p>This map has been produced to the latest known information at the time of issue, and has been produced for your information only. Please consult with the SPR Offshore GIS team to ensure the content is still current before using the information contained on this map. To the fullest extent permitted by law, we accept no responsibility or liability (whether in contract, tort (including negligence) or otherwise in respect of any errors or omissions in the information contained in the map and shall not be liable for any loss, damage or expense caused by such errors or omissions. Contains Ordnance Survey digital data. © Crown copyright. All rights reserved 2018 Licence number 0100031673.</p>			Date	17/01/19	
	Rev	Date	By	Comment	Approved:	LT				Figure	29.1	



	5	17/01/2019	TH	Document Reference Update			1:40,000		<h1>East Anglia TWO</h1> <h2>Landscape Character</h2>	Doc Ref		EA2-DEVWF-ENV-REP-IBR-000824	
	4	06/12/2018	LA	Fifth Issue (OPEN)	Prepared:	LA	Scale @ A3			Rev	5	Datum: OSGB 1936 Projection: BNG	
	3	22/11/2018	LA	Fourth Issue (OPEN)	Checked:	SM	<p>This map has been produced to the latest known information at the time of issue, and has been produced for your information only. Please consult with the SPR Offshore GIS team to ensure the content is still current before using the information contained on this map. To the fullest extent permitted by law, we accept no responsibility or liability (whether in contract, tort (including negligence) or otherwise in respect of any errors or omissions in the information contained in the map and shall not be liable for any loss, damage or expense caused by such errors or omissions.</p> <p>Contains Ordnance Survey digital data. © Crown copyright. All rights reserved 2018 Licence number 0100031673. Contains, or is based on, information supplied by Natural England.</p>						
	Rev	Date	By	Comment	Approved:	LT				Date	17/01/19		
										Figure	29.2		

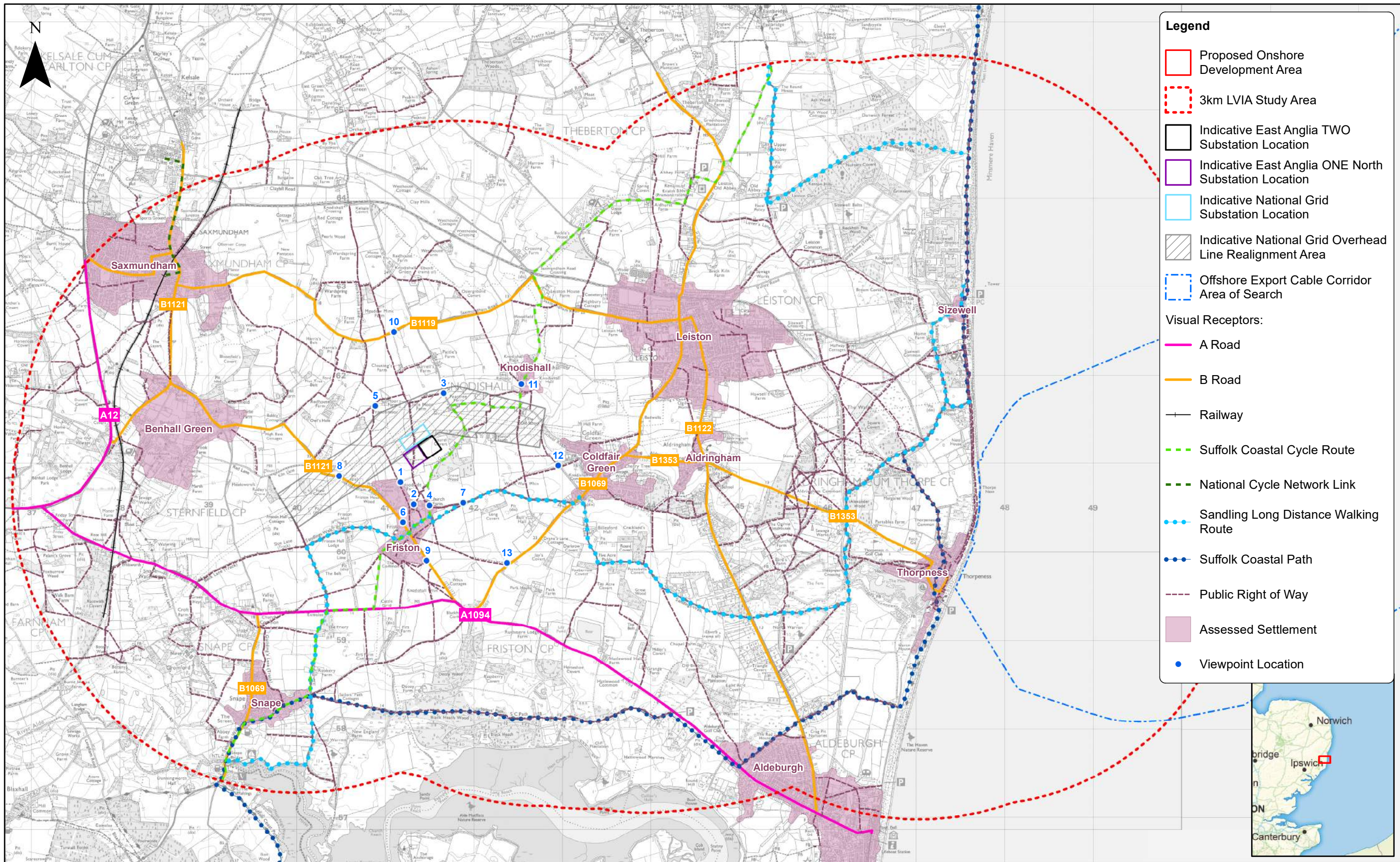




	5	17/01/2019	TH	Document Reference Update		1:40,000 Scale @ A3		East Anglia TWO Landscape Designations	Doc Ref	EA2-DEVWF-ENV-REP-IBR-000824	
	4	06/12/2018	LA	Fifth Issue (OPEN)	Prepared:				Rev	5	Datum: OSGB 1936 Projection: BNG
	3	22/11/2018	LA	Fourth Issue (OPEN)	Checked:				Date	17/01/19	
	Rev	Date	By	Comment	Approved:				Figure	29.3	

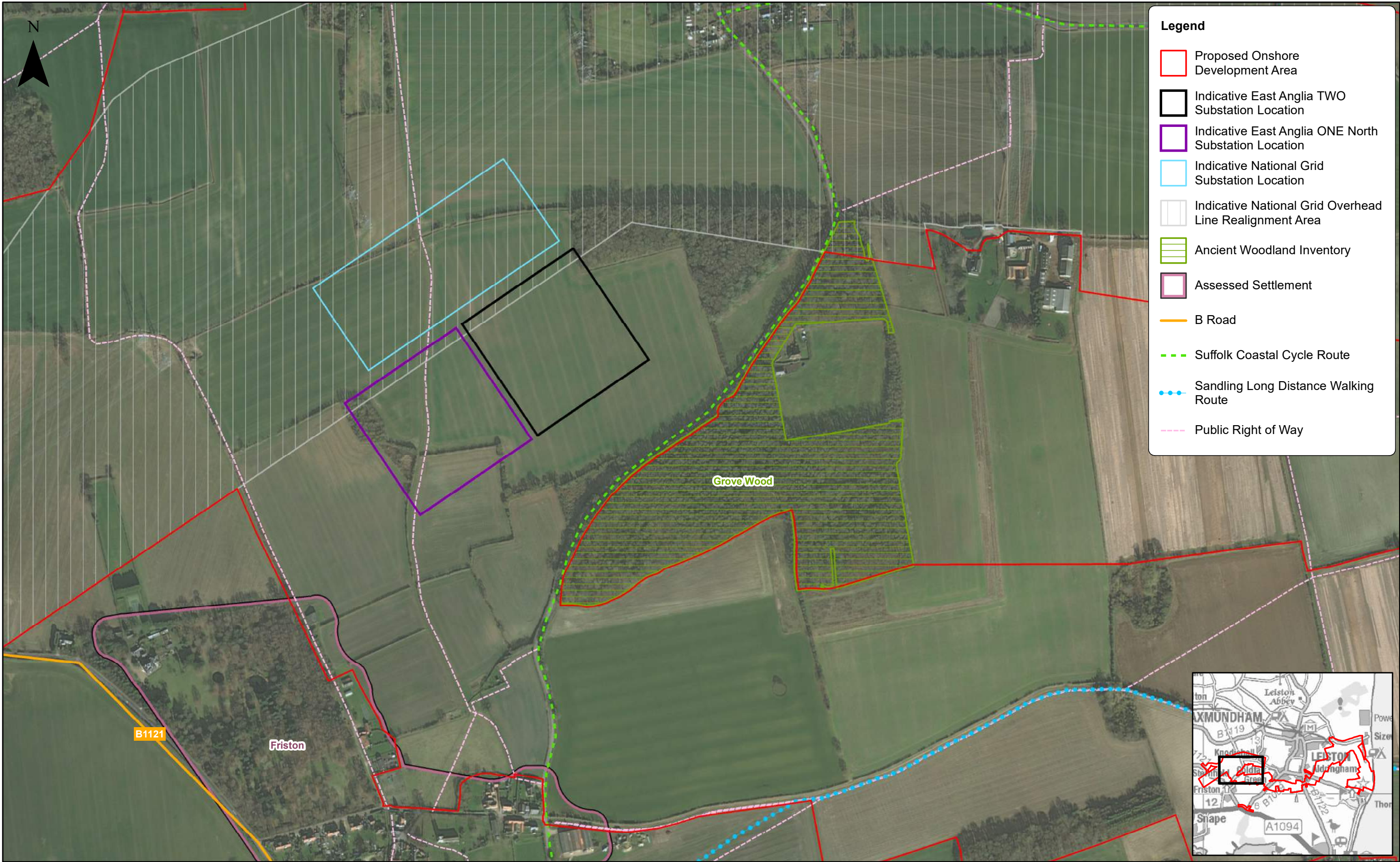
Contains Ordnance Survey digital data. © Crown copyright. All rights reserved 2018 Licence number 0100031673.



Contains, or is based on, information supplied by Natural England 2017.

© Historic England 2017.





	5	17/01/2019	TH	Document Reference Update			1:40,000		<h1>East Anglia TWO</h1> <h2>Visual Receptors</h2>	Doc Ref	EA2-DEVWF-ENV-REP-IBR-000824	
	4	06/12/2018	LA	Fifth Issue (OPEN)	Prepared:	LA	Scale @ A3			Rev	5	Datum: OSGB 1936 Projection: BNG
	3	22/11/2018	LA	Fourth Issue (OPEN)	Checked:	SM	<p><small>This map has been produced to the latest known information at the time of issue, and has been produced for your information only. Please consult with the SPN Offshore GIS team to ensure the content is still current before using the information contained on this map. To the fullest extent permitted by law, we accept no responsibility or liability (whether in contract, tort (including negligence) or otherwise in respect of errors or omissions in the information contained in the map and shall not be liable for any loss, damage or expense caused by such errors or omissions. Contains Ordnance Survey digital data. © Crown copyright. All rights reserved 2018 Licence number 0100031673.</small></p>			Date	17/01/19	
	Rev	Date	By	Comment	Approved:	LT				Figure	29.4	



	5	17/01/2019	TH	Document Reference Update			1:5,000		East Anglia TWO Onshore Cable Route (aerial) (1 of 7)	Doc Ref	EA2-DEVWVF-ENV-REP-IBR-000824	
	4	06/12/2018	LA	Fifth Issue (OPEN)	Prepared:	LA	Scale @ A3			Rev	5	Datum: OSGB 1936 Projection: BNG
	3	22/11/2018	LA	Fourth Issue (OPEN)	Checked:	SM	<small>This map has been produced to the latest known information at the time of issue, and has been produced for your information only. Please consult with the SPR Onshore GIS team to ensure the content is still current before using the information contained on this map. To the fullest extent permitted by law, we accept no responsibility or liability (whether in contract, tort (including negligence) or otherwise in respect of any errors or omissions in the information contained in the map and shall not be liable for any loss, damage or expense caused by such errors or omissions.</small>			Date	17/01/19	
	Rev	Date	By	Comment	Approved:	LT				<small>Contains Ordnance Survey digital data. © Crown copyright. All rights reserved 2018 Licence number 0100031673. Source: Esri, DigitalGlobe, GeoEye, Earthstar Geographics, CNES/Airbus DS, USDA, USGS, AeroGRID, IGN, and the GIS User Community</small>	Figure	



	5	17/01/2019	TH	Document Reference Update			1:5,000 Scale @ A3		<h1>East Anglia TWO</h1> <h2>Onshore Cable Route (aerial)</h2> <h3>(2 of 7)</h3>	Doc Ref	EA2-DEVWVF-ENV-REP-IBR-000824	
	4	06/12/2018	LA	Fifth Issue (OPEN)	Prepared:	LA				Rev	5	Datum: OSGB 1936 Projection: BNG
	3	22/11/2018	LA	Fourth Issue (OPEN)	Checked:	SM	Date	17/01/19				
	Rev	Date	By	Comment	Approved:	LT	Figure	29.6b				
							<p><small>This map has been produced to the latest known information at the time of issue, and has been produced for your information only. Please consult with the SPR Onshore GIS team to ensure the content is still current before using the information contained on this map. To the fullest extent permitted by law, we accept no responsibility or liability (whether in contract, tort (including negligence) or otherwise in respect of any errors or omissions in the information contained in the map and shall not be liable for any loss, damage or expense caused by such errors or omissions.</small></p> <p><small>Contains Ordnance Survey digital data. © Crown copyright. All rights reserved 2018 Licence number 0100031673. Source: Esri, DigitalGlobe, GeoEye, Earthstar Geographics, CNES/Airbus DS, USDA, USGS, AeroGRID, IGN, and the GIS User Community</small></p>					



Rev	Date	By	Comment

5	17/01/2019	TH	Document Reference Update
4	06/12/2018	LA	Fifth Issue (OPEN)
3	22/11/2018	LA	Fourth Issue (OPEN)

Prepared:	LA
Checked:	SM
Approved:	LT

1:5,000
Scale @ A3

This map has been produced to the latest known information at the time of issue, and has been produced for your information only. Please consult with the SPN Onshore GIS team to ensure the content is still current before using the information contained on this map. To the fullest extent permitted by law, we accept no responsibility or liability (whether in contract, tort (including negligence) or otherwise in respect of any errors or omissions in the information contained in the map and shall not be liable for any loss, damage or expense caused by such errors or omissions.
Contains Ordnance Survey digital data. © Crown copyright. All rights reserved 2018 Licence number 0100031673. Source: Esri, DigitalGlobe, GeoEye, Earthstar Geographics, CNES/Airbus DS, USDA, USGS, AeroGRID, IGN, and the GIS User Community

East Anglia TWO
Onshore Cable Route (aerial)
(3 of 7)

Doc Ref	EA2-DEVWF-ENV-REP-IBR-000824	
Rev	5	Datum: OSGB 1936 Projection: BNG
Date	17/01/19	
Figure	29.6c	



Rev	Date	By	Comment

5	17/01/2019	TH	Document Reference Update
4	06/12/2018	LA	Fifth Issue (OPEN)
3	22/11/2018	LA	Fourth Issue (OPEN)

Prepared:	LA
Checked:	SM
Approved:	LT

1:5,000
Scale @ A3

This map has been produced to the latest known information at the time of issue, and has been produced for your information only. Please consult with the SPN Onshore GIS team to ensure the content is still current before using the information contained on this map. To the fullest extent permitted by law, we accept no responsibility or liability (whether in contract, tort (including negligence) or otherwise in respect of any errors or omissions in the information contained in the map and shall not be liable for any loss, damage or expense caused by such errors or omissions.
Contains Ordnance Survey digital data. © Crown copyright. All rights reserved 2018 Licence number 0100031673. Source: Esri, DigitalGlobe, GeoEye, Earthstar Geographics, CNES/Airbus DS, USDA, USGS, AeroGRID, IGN, and the GIS User Community



East Anglia TWO

Onshore Cable Route (aerial)



(4 of 7)

Doc Ref	EA2-DEVWF-ENV-REP-IBR-000824	
Rev	5	Datum: OSGB 1936 Projection: BNG
Date	17/01/19	
Figure	29.6d	





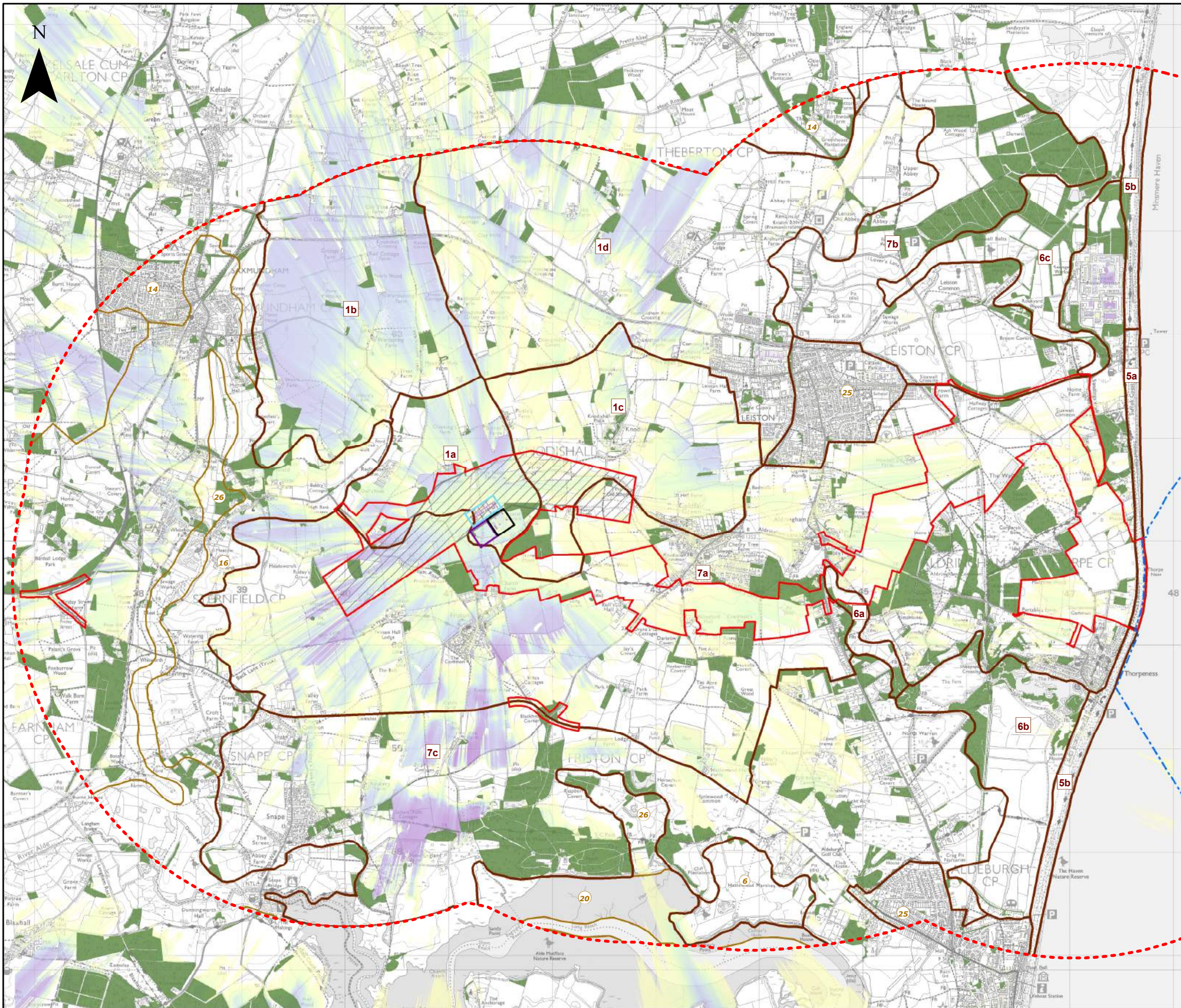
	5	17/01/2019	TH	Document Reference Update			<div>1:5,000</div> <div>Scale @ A3</div> <div></div>	<div>East Anglia TWO</div> <div>Onshore Cable Route (aerial)</div> <div>(5 of 7)</div>	Doc Ref	EA2-DEVWF-ENV-REP-IBR-000824	
	4	06/12/2018	LA	Fifth Issue (OPEN)	Prepared:	LA			Rev	5	Datum: OSGB 1936 Projection: BNG
	3	22/11/2018	LA	Fourth Issue (OPEN)	Checked:	SM			Date	17/01/19	
	Rev	Date	By	Comment	Approved:	LT			Figure	29.6e	
	<div>This map has been produced to the latest known information at the time of issue, and has been produced for your information only. Please consult with the SPR Onshore GIS team to ensure the content is still current before using the information contained on this map. To the fullest extent permitted by law, we accept no responsibility or liability (whether in contract, tort (including negligence) or otherwise in respect of any errors or omissions in the information contained in the map and shall not be liable for any loss, damage or expense caused by such errors or omissions. Contains Ordnance Survey digital data. © Crown copyright. All rights reserved 2018 Licence number 0100031673. Source: Esri, DigitalGlobe, GeoEye, Earthstar Geographics, CNES/Airbus DS, USDA, USGS, AeroGRID, IGN, and the GIS User Community</div>										



	5	17/01/2019	TH	Document Reference Update			1:5,000 Scale @ A3		<h1>East Anglia TWO</h1> <h2>Onshore Cable Route (aerial)</h2> <p>(6 of 7)</p>	Doc Ref	EA2-DEVWF-ENV-REP-IBR-000824	
	4	06/12/2018	LA	Fifth Issue (OPEN)	Prepared:	LA				Rev	5	Datum: OSGB 1936 Projection: BNG
	3	22/11/2018	LA	Fourth Issue (OPEN)	Checked:	SM	Date	17/01/19				
	Rev	Date	By	Comment	Approved:	LT	Figure	29.6f				
							<p><small>This map has been produced to the latest known information at the time of issue, and has been produced for your information only. Please consult with the SPR Offshore GIS team to ensure the content is still current before using the information contained on this map. To the fullest extent permitted by law, we accept no responsibility or liability (whether in contract, tort (including negligence) or otherwise in respect of any errors or omissions in the information contained in the map and shall not be liable for any loss, damage or expense caused by such errors or omissions.</small></p> <p><small>Contains Ordnance Survey digital data. © Crown copyright. All rights reserved 2018 Licence number 0100031673. Source: Esri, DigitalGlobe, GeoEye, Earthstar Geographics, CNES/Airbus DS, USDA, USGS, AeroGRID, IGN, and the GIS User Community</small></p>					



	5	17/01/2019	TH	Document Reference Update			<div>1:5,000</div> <div>Scale @ A3</div> <div></div>	<div>East Anglia TWO</div> <div>Onshore Cable Route (aerial)</div> <div>(7 of 7)</div>	Doc Ref	EA2-DEVWVF-ENV-REP-IBR-000824	
	4	06/12/2018	LA	Fifth Issue (OPEN)	Prepared:	LA			Rev	5	Datum: OSGB 1936 Projection: BNG
	3	22/11/2018	LA	Fourth Issue (OPEN)	Checked:	SM			Date	17/01/19	
	Rev	Date	By	Comment	Approved:	LT			Figure	29.6g	
	<div>This map has been produced to the latest known information at the time of issue, and has been produced for your information only. Please consult with the SPR Offshore GIS team to ensure the content is still current before using the information contained on this map. To the fullest extent permitted by law, we accept no responsibility or liability (whether in contract, tort (including negligence) or otherwise in respect of any errors or omissions in the information contained in the map and shall not be liable for any loss, damage or expense caused by such errors or omissions.</div> <div>Contains Ordnance Survey digital data. © Crown copyright. All rights reserved 2018 Licence number 0100031673. Source: Esri, DigitalGlobe, GeoEye, Earthstar Geographics, CNES/Airbus DS, USDA, USGS, AeroGRID, IGN, and the GIS User Community</div>										



Legend

- Proposed Onshore Development Area
- 3km LVIA Study Area
- Indicative East Anglia TWO Substation Location
- Indicative East Anglia ONE North Substation Location
- Indicative National Grid Substation Location
- Indicative National Grid Overhead Line Realignment Area
- Offshore Export Cable Corridor Area of Search
- Existing Woodland (OS Vectormap District)

Suffolk Landscape Character Assessment (2011)

Areas with OPEN sub-divisions

- 1. Ancient estate claylands
- 5. Coastal Dunes shingle ridges
- 6. Coastal levels
- 7. Estate sandlands

Areas outwith OPEN sub-divisions

- 14. Rolling estate claylands
- 16. Rolling estate sandlands
- 20. Saltmarsh & intertidal flats
- 25. Urban
- 26. Valley meadowlands

Zone of Theoretical Visibility*
(East Anglia TWO & National Grid)

- Higher Theoretical Visibility
- Lower Theoretical Visibility

Substation Height:	Various
DSM:	Lidar 2m
DSM resolution:	2m
Observer height:	2m
Surface features:	Included
Earth curvature:	Included

*ZTV shows higher to lower visibility based on the amount of the onshore substation and National Grid substation visible as represented by a grid of points across a 3D model representing the Rochdale Envelope of the onshore substation site. The ZTV does not indicate the decrease in scale that occurs with increased distance from the onshore substation. Areas of existing woodland have been masked out to compensate for limitations in the ZTV production process.



5	17/01/2019	TH	Document Reference Update
4	06/12/2018	LA	Fifth Issue (OPEN)
3	22/11/2018	LA	Fourth Issue (OPEN)
Rev	Date	By	Comment

Prepared:	LA
Checked:	SM
Approved:	LT

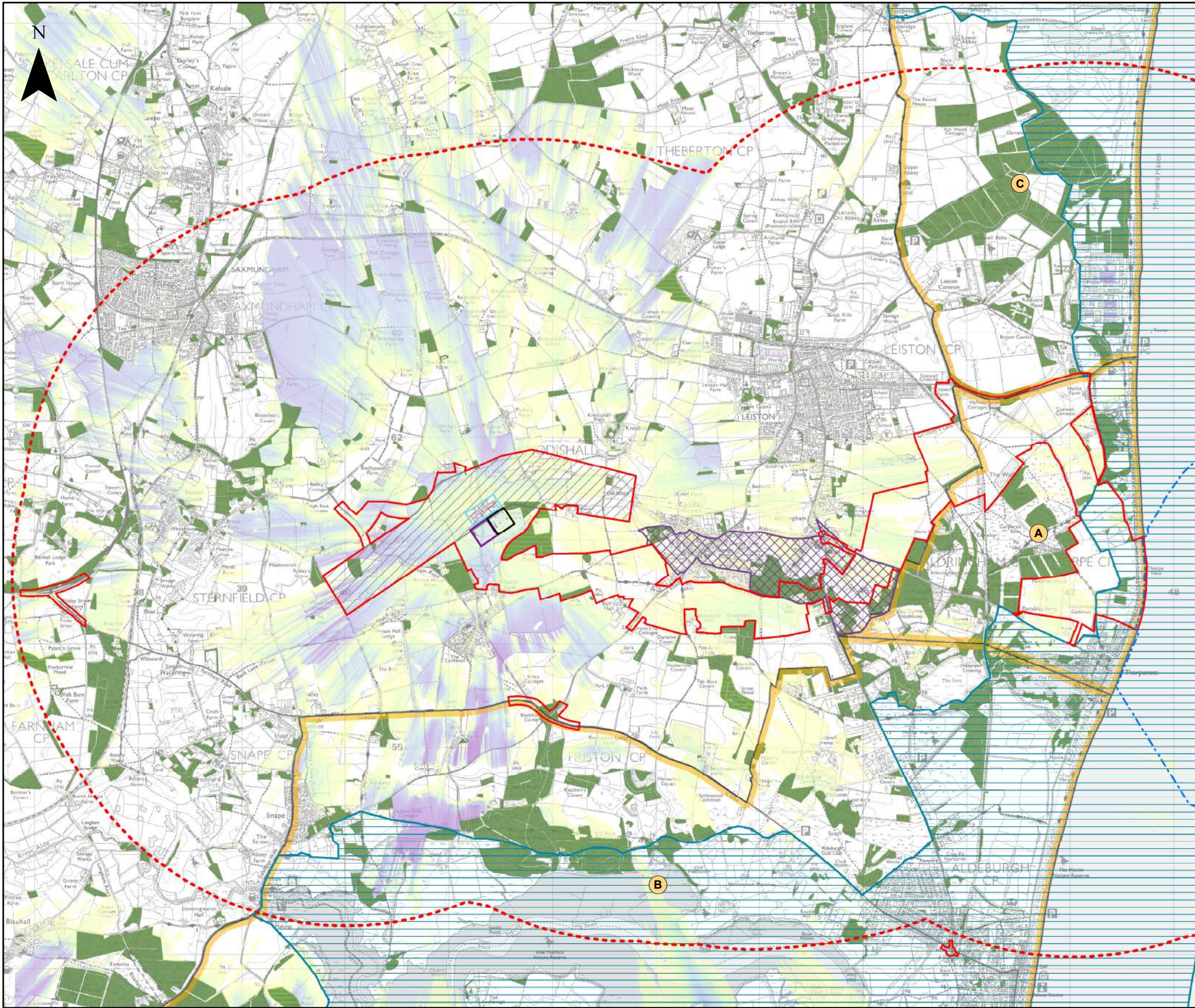
1:40,000
Scale @ A3



This map has been produced to the latest known information at the time of issue, and has been produced for your information only. Please consult with the SPN Offshore GIS team to ensure the content is still current before using the information contained on this map. To the fullest extent permitted by law, we accept no responsibility or liability (whether in contract, tort (including negligence) or otherwise in respect of any errors or omissions in the information contained in the map and shall not be liable for any loss, damage or expense caused by such errors or omissions. Contains Ordnance Survey digital data. © Crown copyright. All rights reserved 2018 Licence number 0100031673.

East Anglia TWO
Onshore Substation ZTV
(with Landscape Character)

Doc Ref	EA2-DEVWF-ENV-REP-IBR-000824	
Rev	5	Datum: OSGB 1936 Projection: BNG
Date	17/01/19	
Figure	29.7	



Legend

- Proposed Onshore Development Area
- 3km LVIA Study Area
- Indicative East Anglia TWO Substation Location
- Indicative East Anglia ONE North Substation Location
- Indicative National Grid Substation Location
- Indicative National Grid Overhead Line Realignment Area
- Offshore Export Cable Corridor Area of Search
- Existing Woodland (OS Vectormap District)
- Landscape Designations:**
 - Heritage Coast
 - Ancient Woodland Inventory
 - Suffolk Coast & Heaths Area of Outstanding Natural Beauty (AONB)
 - A - AONB between Thorpeness, Sizewell and Leiston
 - B - AONB between Thorpeness, Aldeburgh and Snape
 - C - AONB Sizewell and Dunwich Forest
 - Hundred River Valley Special Landscape Area



Zone of Theoretical Visibility*
(East Anglia TWO & National Grid)

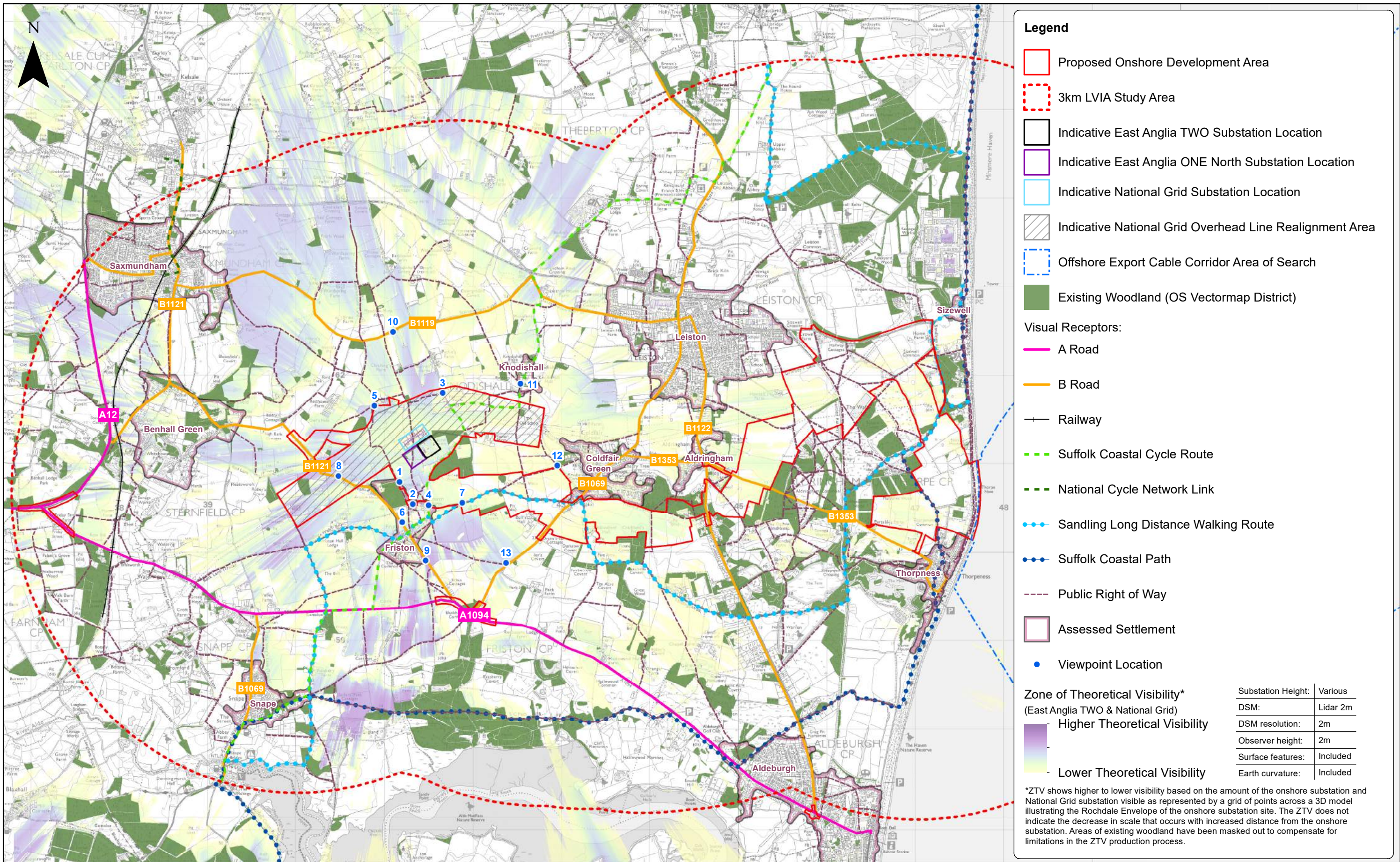
Higher Theoretical Visibility


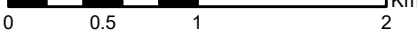
Lower Theoretical Visibility

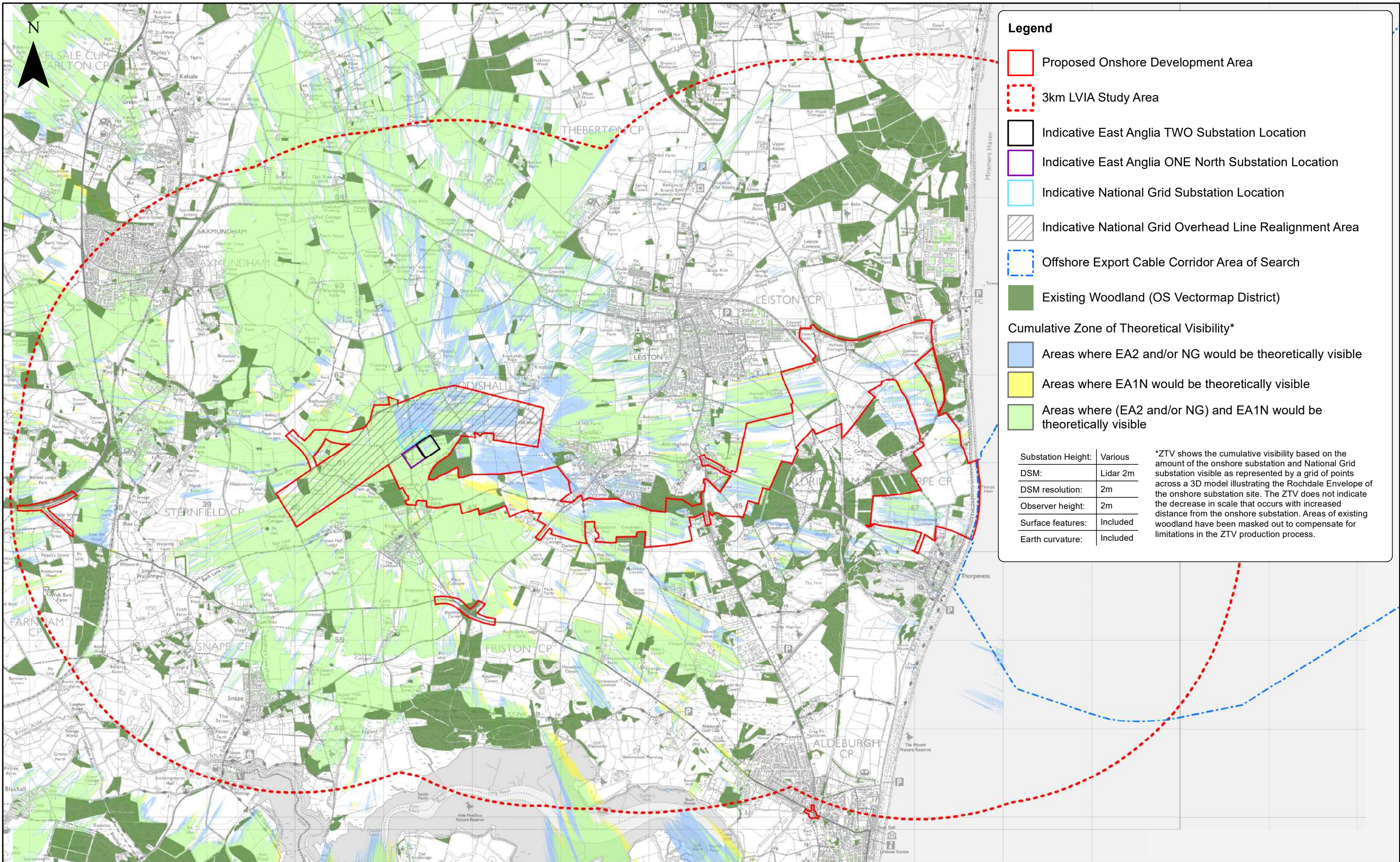
Substation Height:	Various
DSM:	Lidar 2m
DSM resolution:	2m
Observer height:	2m
Surface features:	Included
Earth curvature:	Included



*ZTV shows higher to lower visibility based on the amount of the onshore substation and National Grid substation visible as represented by a grid of points across a 3D model illustrating the Rochdale Envelope of the onshore substation site. The ZTV does not indicate the decrease in scale that occurs with increased distance from the onshore substation. Areas of existing woodland have been masked out to compensate for limitations in the ZTV production process.

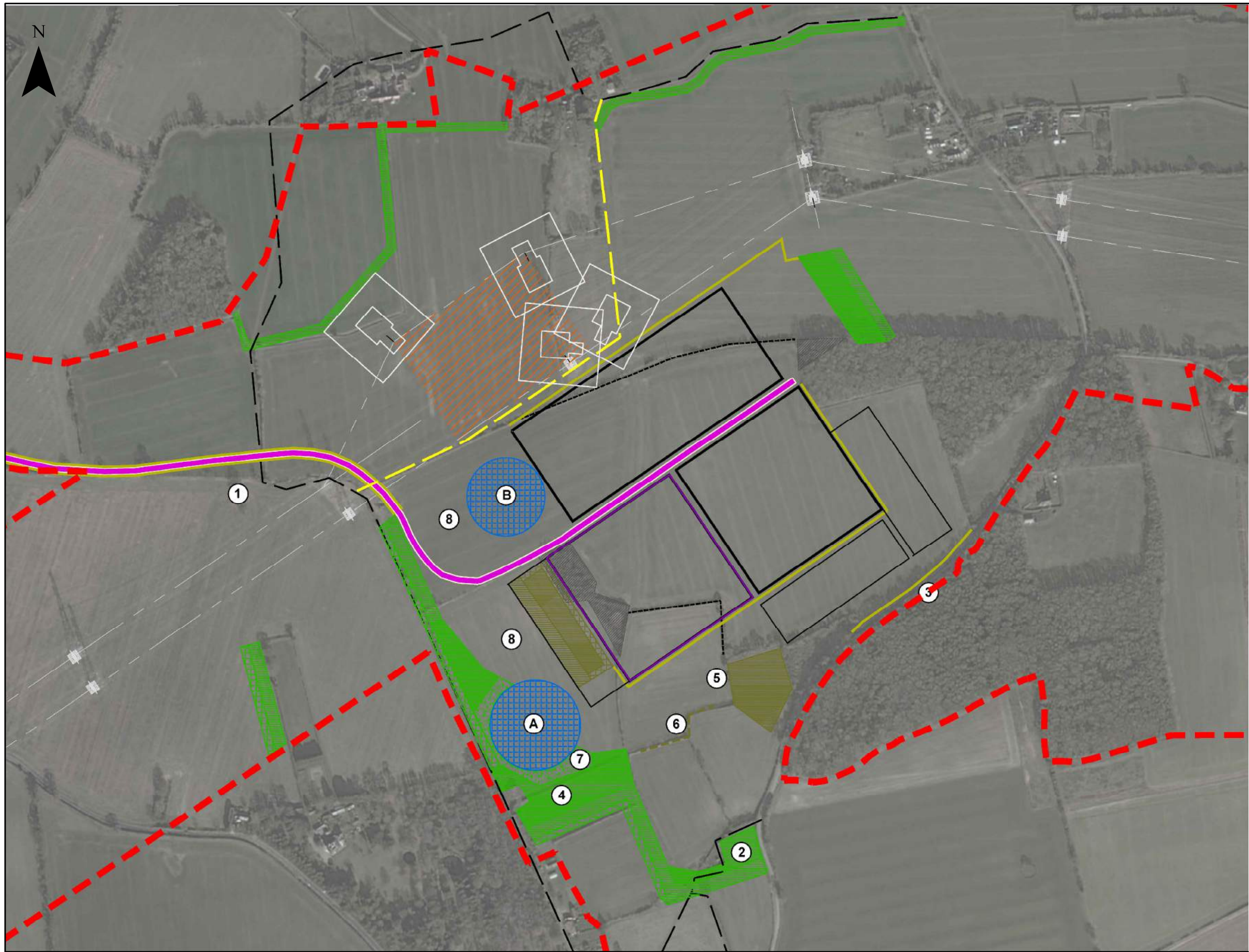
	5	17/01/2019	TH	Document Reference Update			1:40,000		<h1>East Anglia TWO</h1> <h2>Onshore Substation ZTV</h2> <h3>(with Landscape Designations)</h3>	Doc Ref	EA2-DEVWF-ENV-REP-IBR-000824	
	4	06/12/2018	LA	Fifth Issue (OPEN)	Prepared:	LA	Scale @ A3			Rev	5	Datum: OSGB 1936 Projection: BNG
	3	22/11/2018	LA	Fourth Issue (OPEN)	Checked:	SM				Date	17/01/19	
	Rev	Date	By	Comment	Approved:	LT				Figure	29.8	
	<p>This map has been produced to the latest known information at the time of issue, and has been produced for your information only. Please consult with the SPR Offshore GIS team to ensure the content is still current before using the information contained on this map. To the fullest extent permitted by law, we accept no responsibility or liability (whether in contract, tort (including negligence) or otherwise in respect of any errors or omissions in the information contained in the map and shall not be liable for any loss, damage or expense caused by such errors or omissions.</p> <p>Contains Ordnance Survey digital data. © Crown copyright. All rights reserved 2018 Licence number 0100031673. Contains, or is based on, information supplied by Natural England 2017. © Historic England 2017.</p>											



	5	17/01/2019	TH	Document Reference Update			1:40,000		East Anglia TWO Onshore Substation ZTV (with Visual Receptors)	Doc Ref EA2-DEVWF-ENV-REP-IBR-000824		
	4	06/12/2018	LA	Fifth Issue (OPEN)	Prepared:	LA	Scale @ A3			Rev 5	Datum: OSGB 1936 Projection: BNG	Figure 29.9
	3	22/11/2018	LA	Fourth Issue (OPEN)	Checked:	SM				Date 17/01/19		
	Rev	Date	By	Comment	Approved:	LT						





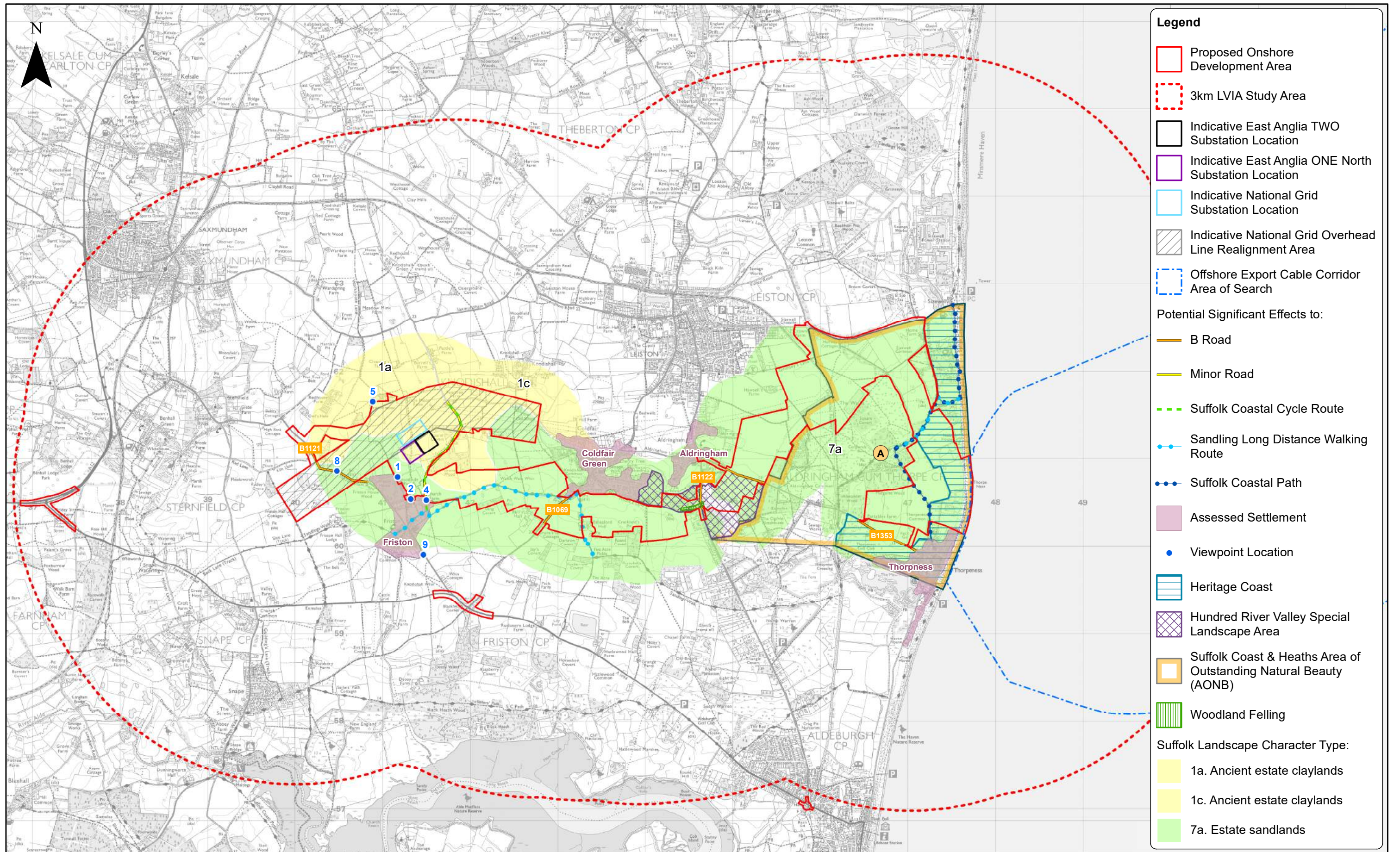
	5	17/01/2019	TH	Document Reference Update			1:40,000		<h1>East Anglia TWO</h1> <h2>Cumulative ZTV</h2> <h3>(EA2 & NG with EA1N)</h3>	<table><tr><td>Doc Ref</td><td colspan="2">EA2-DEVWVF-ENV-REP-IBR-000824</td></tr><tr><td>Rev</td><td>5</td><td rowspan="3">Datum: OSGB 1936 Projection: BNG</td></tr><tr><td>Date</td><td>17/01/19</td></tr><tr><td>Figure</td><td>29.10</td></tr></table>	Doc Ref	EA2-DEVWVF-ENV-REP-IBR-000824		Rev	5	Datum: OSGB 1936 Projection: BNG	Date	17/01/19	Figure	29.10
	Doc Ref	EA2-DEVWVF-ENV-REP-IBR-000824																		
	Rev	5	Datum: OSGB 1936 Projection: BNG																	
	Date	17/01/19																		
	Figure	29.10																		
4	06/12/2018	LA	Fifth Issue (OPEN)	Prepared:	LA	Scale @ A3														
3	22/11/2018	LA	Fourth Issue (OPEN)	Checked:	SM	<p>This map has been produced to the latest known information at the time of issue, and has been produced for your information only. Please consult with the SPR Offshore GIS team to ensure the content is still current before using the information contained on this map. To the fullest extent permitted by law, we accept no responsibility or liability (whether in contract, tort (including negligence) or otherwise in respect of any errors or omissions in the information contained in the map and shall not be liable for any loss, damage or expense caused by such errors or omissions.</p> <p>Contains Ordnance Survey digital data. © Crown copyright. All rights reserved 2018 Licence number 0100031673.</p>														
Rev	Date	By	Comment	Approved:	LT															





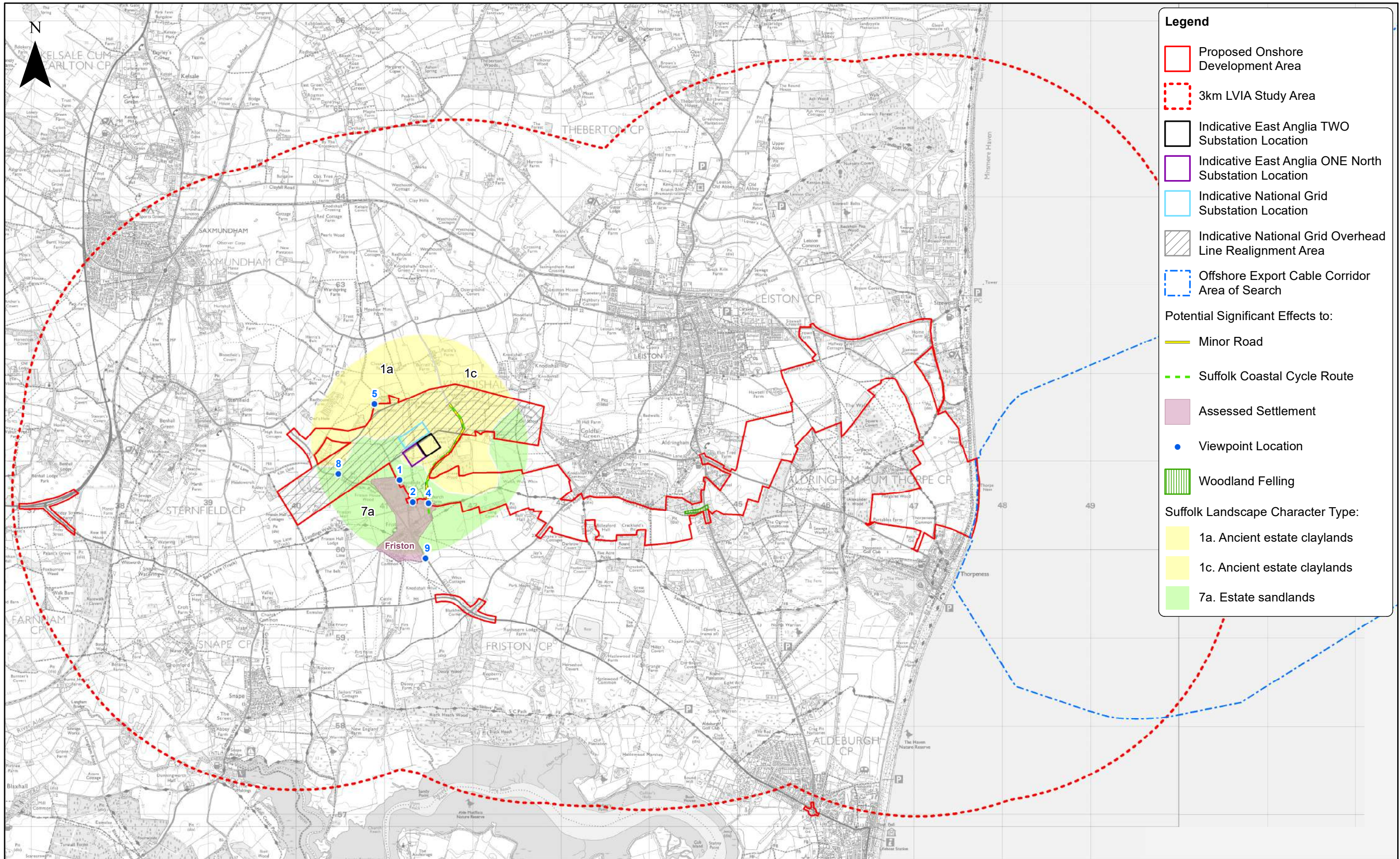
- Proposed Onshore Development Area
- Indicative cable route
- Indicative cable trench
- Indicative temporary access route / haul road
- Permanent access road
- Construction compound
- Substation operational compound location
- A - Indicative SuDS Basin for EA2 and EA1N Substations. Required size and indicative location shown. Final position TBC.
- B - Indicative SuDS Basin for surface water from National Grid Substation. Required size and indicative location shown. Final position TBC.
- Proposed re-routing of footpath to tie into existing footpaths
- Existing footpath
- Pre construction stage planting:**
- Core woodland - comprising generally slower growing mixed broadleaf species
- Edge woodland - comprising generally lower growing mixed broadleaf and shrub species
- Screening woodland - comprising generally faster growing mixed broadleaf and conifer species to provide visual screening and shelter for slower growing core woodland
- Wet woodland - mix appropriate for SuDS detention basin area.
- Areas of existing woodland to be removed
- Existing hedgerow to be removed
- Post construction stage planting:**
- Core woodland - comprising generally slower growing mixed broadleaf species
- Edge woodland - comprising generally lower growing mixed broadleaf and shrub species
- Screening woodland - comprising generally faster growing mixed broadleaf and conifer species to provide visual screening and shelter for slower growing core woodland
- Existing hedgerow to be removed and replanted post construction
- Mixed native species hedge



- Mitigation planting notes:**
- General Notes:
- Planting densities and species mix to be further developed. All species to be locally appropriate - refer to section 29.3.4 of LVIA for indicative species lists.
- Notionally four woodland types are proposed in order to achieve a variety of screening effects and a diverse habitat: core woodland, edge woodland, screening woodland and wet woodland.
- Specific notes (refer to plan):
1. Permanent access road to be hedge lined, making use of existing hedge where possible.
 2. Proposed new screening woodland links or extends areas of existing woodland to create continuous habitat corridors.
 3. Additional hedge and hedgerow tree planting is proposed along the western edge of Grove Road.
 4. Additional screening woodland is proposed to the north of Friston which, in combination with the existing hedgerows, provides a layered screening approach.
 5. Where possible existing hedgerows are to be protected, retained and incorporated as part of a layered mitigation screening approach.
 6. Any hedgerows which are removed from within the cable route corridor are to be replanted post construction.
 7. Woodland surrounding SuDS is to be integrated into the SuDS design (e.g. using wet woodland species). Eastern edge of SuDS to be open to create a variety of habitats/water edge conditions.
 8. Non wooded areas surrounding SuDS to be converted to species rich grassland.

	5	17/01/2019	TH	Document Reference Update			<div>1:5,000</div> <div>Scale @ A3</div> <div></div>	<div>East Anglia TWO</div> <div>Onshore Substation –</div> <div>Indicative Landscape Mitigation Plan</div>	Doc Ref		EA2-DEVWF-ENV-REP-IBR-000824	
	4	06/12/2018	LA	Fifth Issue (OPEN)	Prepared:	LA			Rev	5	Datum: OSGB 1936 Projection: BNG	
	3	22/11/2018	LA	Fourth Issue (OPEN)	Checked:	SM			Date	17/01/19		
	Rev	Date	By	Comment	Approved:	LT			Figure	29.11		
	<div>This map has been produced to the latest known information at the time of issue, and has been produced for your information only. Please consult with the SPR Onshore GIS team to ensure the content is still current before using the information contained on this map. To the fullest extent permitted by law, we accept no responsibility or liability (whether in contract, tort (including negligence) or otherwise in respect of any errors or omissions in the information contained in the map and shall not be liable for any loss, damage or expense caused by such errors or omissions. Contains Ordnance Survey digital data. © Crown copyright. All rights reserved 2018 Licence number 0100031673.</div>											



	5	17/01/2019	TH	Document Reference Update			1:40,000		<h1>East Anglia TWO</h1> <h2>Summary of Significant Effects - Construction</h2>	Doc Ref	EA2-DEVWF-ENV-REP-IBR-000824	
	4	06/12/2018	LA	Fifth Issue (OPEN)	Prepared:	LA	Scale @ A3			Rev	5	Datum: OSGB 1936 Projection: BNG
	3	22/11/2018	LA	Fourth Issue (OPEN)	Checked:	SM	<small>This map has been produced to the latest known information at the time of issue, and has been produced for your information only. Please consult with the SPN Offshore GIS team to ensure the content is still current before using the information contained on this map. To the fullest extent permitted by law, we accept no responsibility or liability (whether in contract, tort (including negligence) or otherwise in respect of any errors or omissions in the information contained in the map and shall not be liable for any loss, damage or expense caused by such errors or omissions.</small>			Date	17/01/19	
	Rev	Date	By	Comment	Approved:	LT	<small>Contains Ordnance Survey digital data. © Crown copyright. All rights reserved 2018 Licence number 0100031673.</small>			Figure	29.12a	



	5	17/01/2019	TH	Document Reference Update			1:40,000		<h1>East Anglia TWO</h1> <h2>Summary of Significant Effects - Operation (Without Mitigation)</h2>	Doc Ref	EA2-DEVWF-ENV-REP-IBR-000824	
	4	06/12/2018	LA	Fifth Issue (OPEN)	Prepared:	LA	Scale @ A3			Rev	5	Datum: OSGB 1936 Projection: BNG
	3	22/11/2018	LA	Fourth Issue (OPEN)	Checked:	SM	<small>This map has been produced to the latest known information at the time of issue, and has been produced for your information only. Please consult with the SPR Offshore GIS team to ensure the content is still current before using the information contained on this map. To the fullest extent permitted by law, we accept no responsibility or liability (whether in contract, tort (including negligence) or otherwise in respect of any errors or omissions in the information contained in the map and shall not be liable for any loss, damage or expense caused by such errors or omissions. Contains Ordnance Survey digital data. © Crown copyright. All rights reserved 2018 Licence number 0100031673.</small>			Date	17/01/19	
	Rev	Date	By	Comment	Approved:	LT				Figure	29.12b	

This page is intentionally blank