

Legend

Suffolk Coastal Path (SCP)

Areas of SCP assessed on site to have visibility of development

SCP assessed against blade tip ZTV - No. of Blade Tips Visible

1 - 10

11 - 20

21 - 30

31 - 40

41 - 50

51 - 60

No. of Blade Tips Visible

1 - 10

11 - 20

21 - 30

31 - 40

41 - 50

51 - 60

Blade Tip: 300m

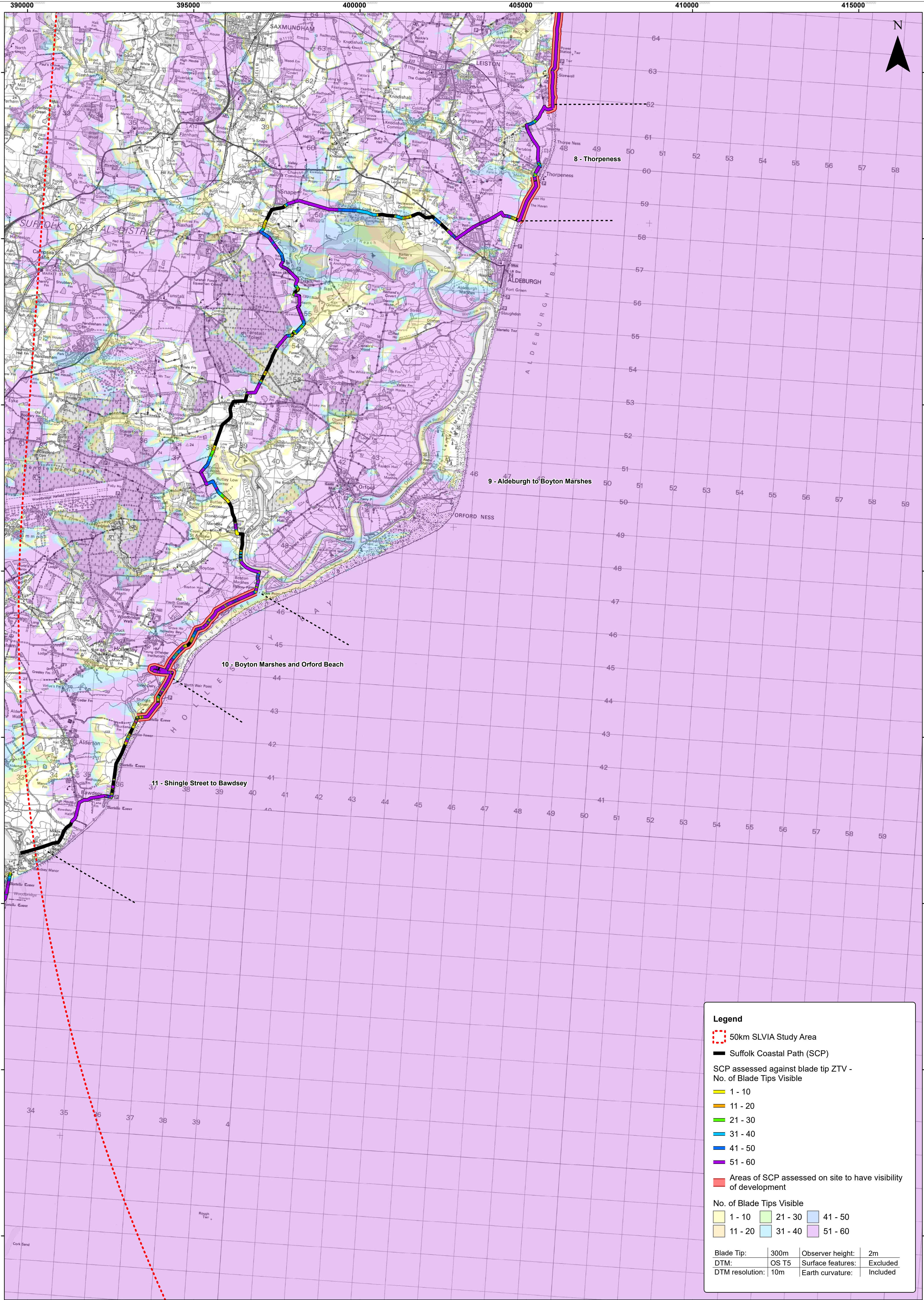
Observer height: 2m

DTM: OS T5

Surface features: Excluded

DTM resolution: 10m

Earth curvature: Included



Legend

50km SLVIA Study Area

Suffolk Coastal Path (SCP)

SCP assessed against blade tip ZTV - No. of Blade Tips Visible

1 - 10

11 - 20

21 - 30

31 - 40

41 - 50

51 - 60

Areas of SCP assessed on site to have visibility of development

No. of Blade Tips Visible

1 - 10

11 - 20

21 - 30

31 - 40

41 - 50

51 - 60

Blade Tip:

300m

Observer height:

2m

DTM:

OS T5

Surface features:

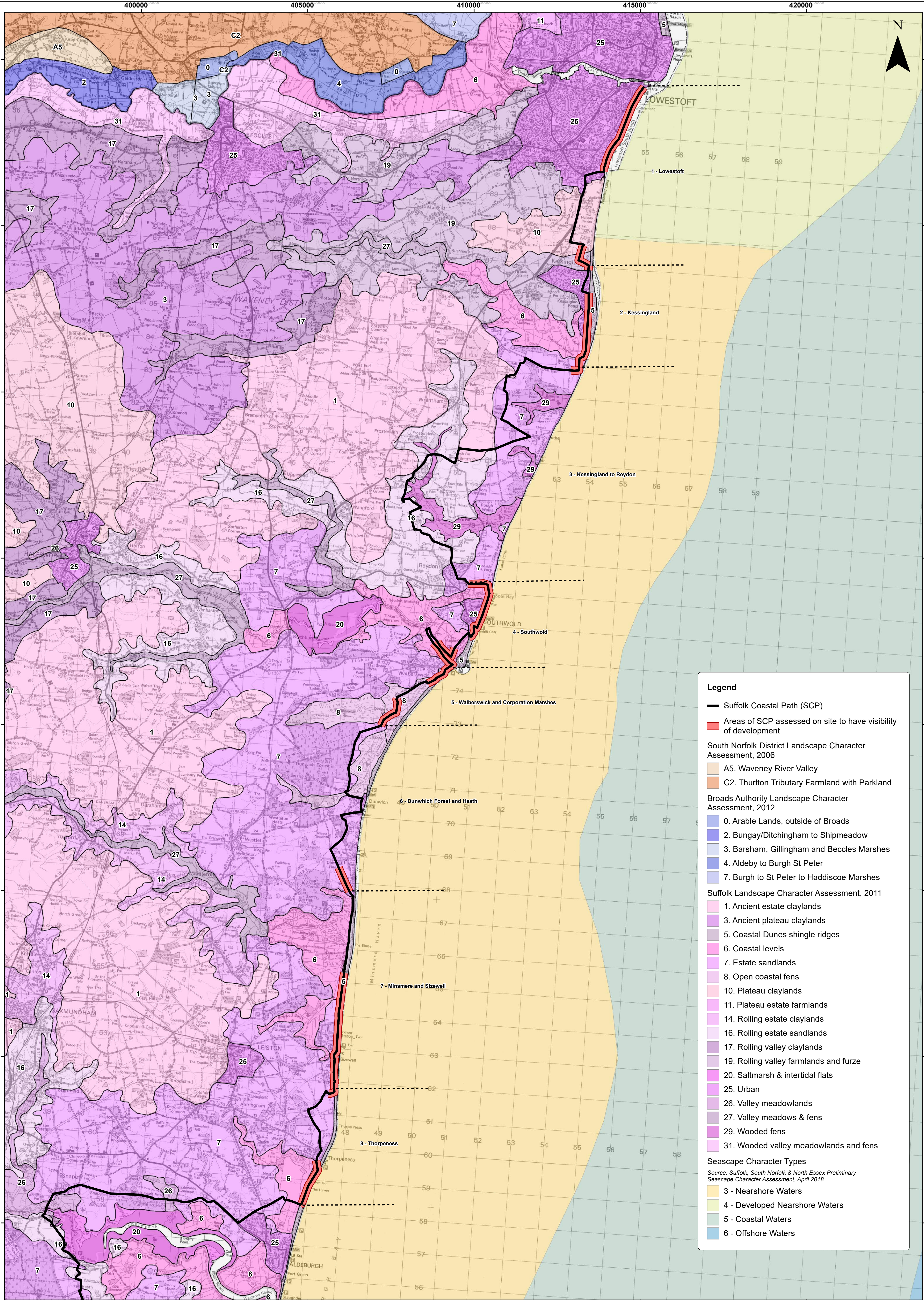
Excluded

DTM resolution:

10m

Earth curvature:

Included



Legend

Suffolk Coastal Path (SCP)

Areas of SCP assessed on site to have visibility of development

South Norfolk District Landscape Character Assessment, 2006

A5. Waveney River Valley

C2. Thurilton Tributary Farmland with Parkland

Broads Authority Landscape Character Assessment, 2012

0. Arable Lands, outside of Broads

2. Bungay/Ditchingham to Shipmeadow

3. Barsham, Gillingham and Beccles Marshes

4. Aldeby to Burgh St Peter

7. Burgh to St Peter to Haddiscoe Marshes

Suffolk Landscape Character Assessment, 2011

1. Ancient estate claylands

3. Ancient plateau claylands

5. Coastal Dunes shingle ridges

6. Coastal levels

7. Estate sandlands

8. Open coastal fens

10. Plateau claylands

11. Plateau estate farmlands

14. Rolling estate claylands

16. Rolling estate sandlands

17. Rolling valley claylands

19. Rolling valley farmlands and furze

20. Saltmarsh & intertidal flats

25. Urban

26. Valley meadowlands

27. Valley meadows & fens

29. Wooded fens

31. Wooded valley meadowlands and fens

Seascape Character Types

Source: Suffolk, South Norfolk & North Essex Preliminary Seascape Character Assessment, April 2018

3 - Nearshore Waters

4 - Developed Nearshore Waters

5 - Coastal Waters

6 - Offshore Waters

3	20/12/2018	TH	Layout Update		
2	31/10/2018	LA	Edits to legend	Prepared:	TH
1	19/09/2018	MF	Changes to Assessed Visibility	Checked:	SM
Rev	Date	By	Comment	Approved:	LT

1:50,000

Scale @ A1

0

0.5

1

2

3

4

km

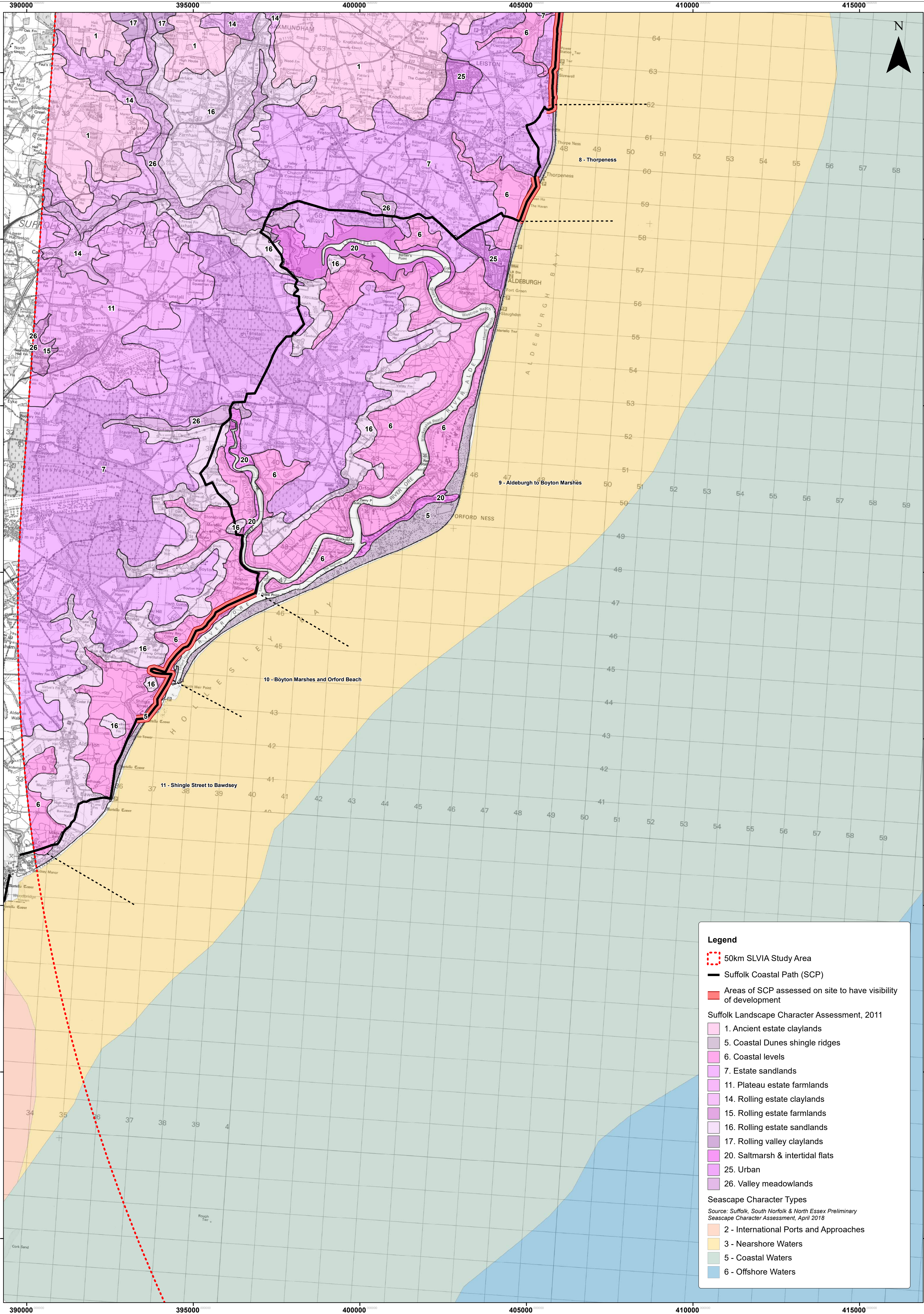
East Anglia TWO

Suffolk Coastal Path (North) Visibility with Landscape (District & County) & Seascape Character

Drq No	XXXX-XX-XXX
Rev	3
Date	17/01/19
Figure	28.24a

Datum: WGS84
Projection: UTM Z31N

This map has been produced by the latest known information at the time of issue, and has been produced for your information only. Please consult with the SPH Officers GIS team to ensure the content is still current before using the information contained on this map. To the fullest extent permitted by law, we accept no responsibility or liability (whether in contract, tort including negligence or otherwise) in respect of any errors or omissions in the information contained in the map and shall not be liable for any loss, damage or expense caused by any use of the information. © Crown Copyright and Database Right. All rights reserved. Product Code No. 18070101. This product has been derived from data supplied by the Ordnance Survey and the Department of the Environment, Food and Rural Affairs. All rights reserved. 2011. Licence number 1100001071.



Legend

50km SLVIA Study Area

Suffolk Coastal Path (SCP)

Areas of SCP assessed on site to have visibility of development

Suffolk Landscape Character Assessment, 2011

1. Ancient estate claylands

5. Coastal Dunes shingle ridges

6. Coastal levels

7. Estate sandlands

11. Plateau estate farmlands

14. Rolling estate claylands

15. Rolling estate farmlands

16. Rolling estate sandlands

17. Rolling valley claylands

20. Saltmarsh & intertidal flats

25. Urban

26. Valley meadowlands

Seascape Character Types

Source: Suffolk, South Norfolk & North Essex Preliminary Seascape Character Assessment, April 2018

2 - International Ports and Approaches

3 - Nearshore Waters

5 - Coastal Waters

6 - Offshore Waters

4	16/01/2019	TH	Document Reference Update		
3	20/12/2018	TH	Update Layout	Prepared:	TH
2	31/10/2018	LA	Edits to legend	Checked:	SM
Rev	Date	By	Comment	Approved:	LT

1:50,000 Scale @ A1

0

0.5

1

2

3

4

km

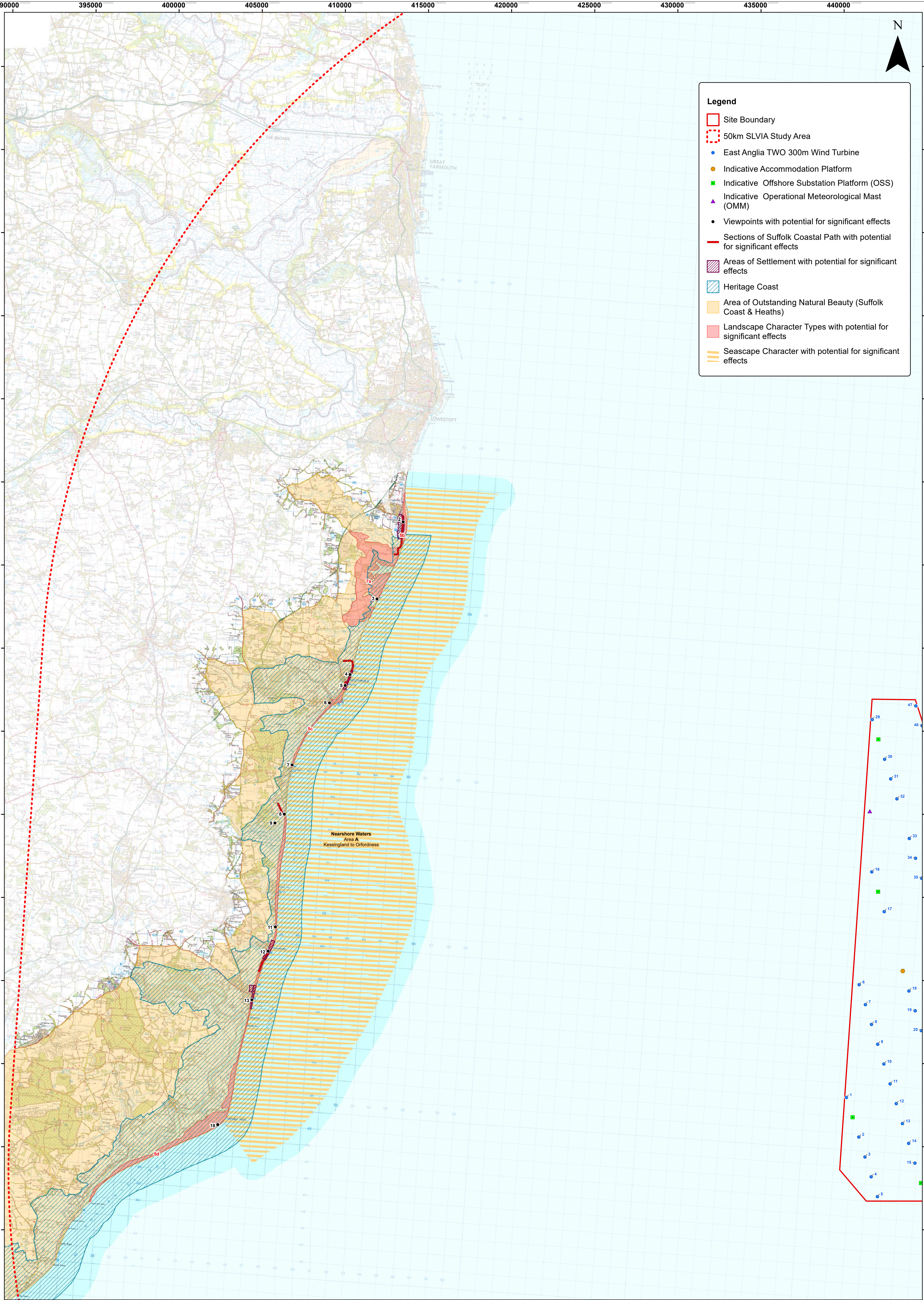
East Anglia TWO

Suffolk Coastal Path (South) Visibility with Landscape (District & County) & Seascape Character

Doc Ref	EA2-DEVWF-ENV-REP-IBR-000823
Rev	4
Date	16/01/19
Figure	28.24b

Datum: WGS84
Projection: UTM Z31N

This map has been produced to the best known information at the time of issue, and has been produced for your information only. Please consult with the SPK Offshore GIS team to ensure the content is still current before using the information contained on this map. To the fullest extent permitted by law, we accept no responsibility or liability (whether in contract, tort (including negligence or otherwise) or otherwise) in respect of any errors or omissions in the information contained in the map and shall not be liable for any loss, damage or expense caused by such errors or omissions. © Crown Copyright and Database Right. All rights reserved. Product Code No. 160719101. This product has been derived in part from material obtained from British Hydrographic Office with the permission of the Controller of Her Majesty's Stationery Office and UK Hydrographic Office. NOT TO BE USED FOR NAVIGATION. Contains Ordnance Survey digital data. © Crown copyright. All rights reserved 2011. Licence number 1000201973.



Legend

Site Boundary

50km SLVIA Study Area

East Anglia TWO 300m Wind Turbine

Indicative Accommodation Platform

Indicative Offshore Substation Platform (OSS)

Indicative Operational Meteorological Mast (OMM)

Viewpoints with potential for significant effects

Sections of Suffolk Coastal Path with potential for significant effects

Areas of Settlement with potential for significant effects

Heritage Coast

Area of Outstanding Natural Beauty (Suffolk Coast & Heaths)

Landscape Character Types with potential for significant effects

Seascape Character with potential for significant effects