



**SCOTTISHPOWER
RENEWABLES**

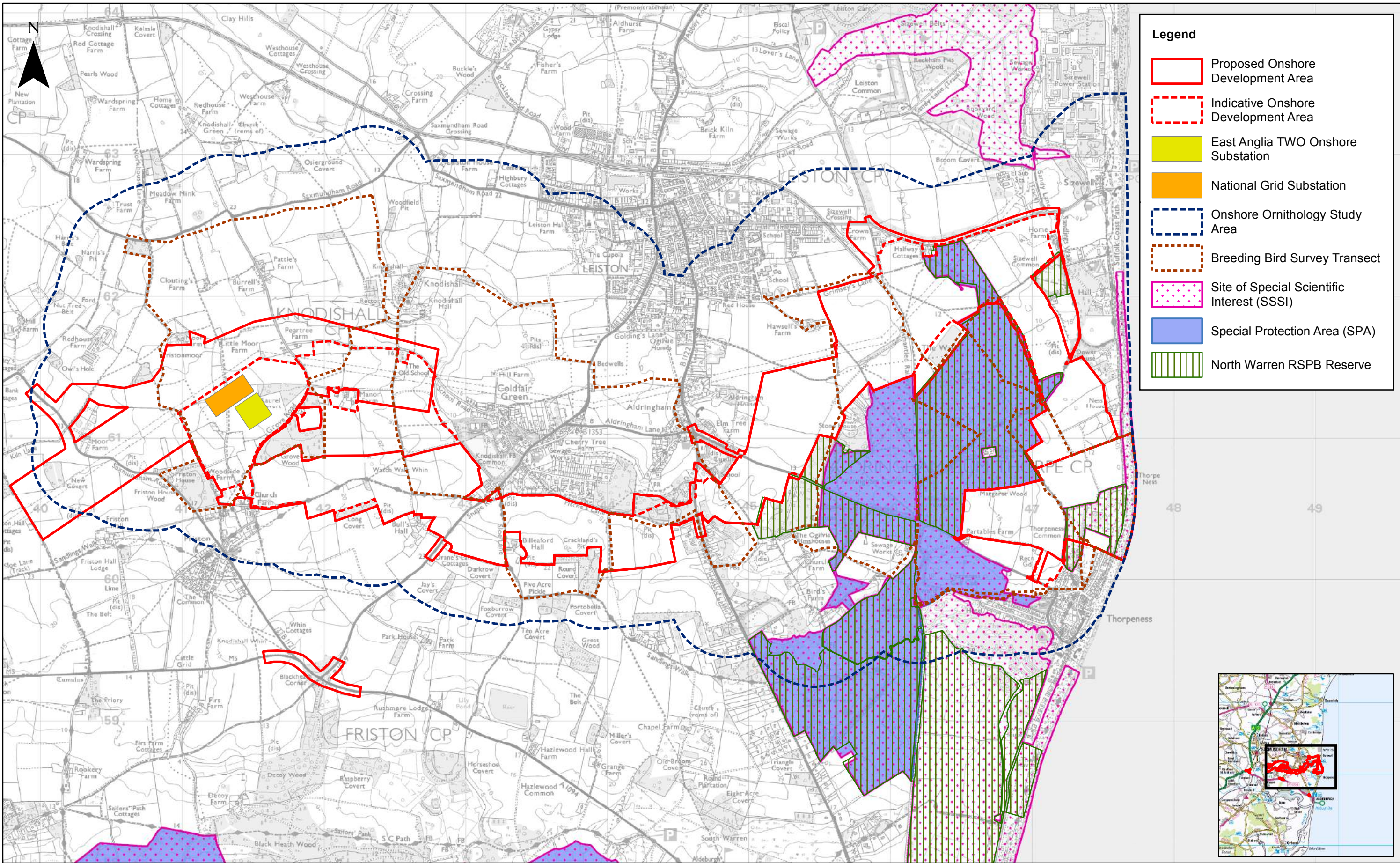
East Anglia TWO Offshore Windfarm



Chapter 23 Onshore Ornithology

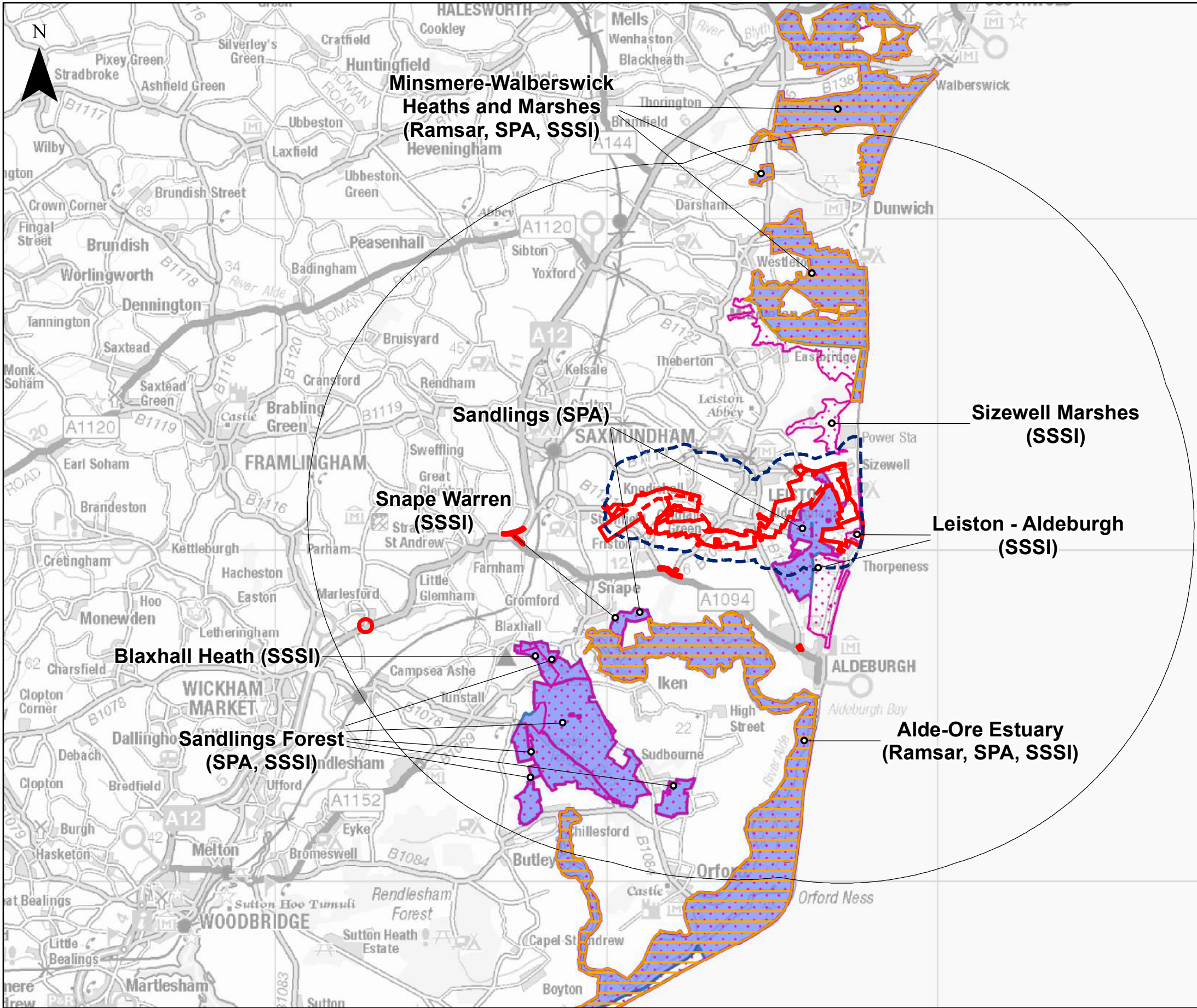
Figures

Preliminary Environmental Information
Volume 2

This page is intentionally blank





	05	17/12/2018	BJF	Fifth Issue	Checked:	BJF	1:25,000		<h1>East Anglia TWO</h1> <h2>Onshore Ornithology Study Area</h2>	Drg No EA2-GEN-DA-SPR-008380		
	04	13/11/2018	BJF	Fourth Issue	Checked:	BJF	Scale @ A3			Rev 05	Coordinate System: BNG Datum: OSGB36	
	03	26/10/2018	BJF	Third Issue	Checked:	BJF				Date 17/12/18		
	Rev	Date	By	Comment	Approved:	RD				Figure 23.1		
	<p>Source: © Crown copyright and database rights 2018. Ordnance Survey 0100031673.</p> <p>This map has been produced to the latest known information at the time of issue, and has been produced for your information only. Please consult with the SPR Onshore GIS team to ensure the content is still current before using the information contained on this map. To the fullest extent permitted by law, we accept no responsibility or liability (whether in contract, tort (including negligence) or otherwise in respect of any errors or omissions in the information contained in the map and shall not be liable for any loss, damage or expense caused by such errors or omissions.</p>											



Legend

- Proposed Onshore Development Area
- Indicative Onshore Development Area
- Onshore Ornithology Study Area
- 10 km Distance Band
- Ramsar
- Special Protection Area (SPA)
- Site of Special Scientific Interest (SSSI)

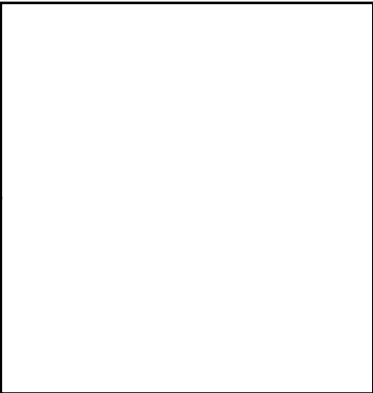



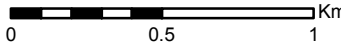
	03	13/11/2018	BJF	Fourth Issue	Checked:	BJF	1:125,000		<h1>East Anglia TWO</h1> <h2>Onshore Ornithological Designated Sites within 10km</h2>	<table><tr><td>Drg No</td><td colspan="2">EA2-GEN-DA-SPR-008381</td></tr><tr><td>Rev</td><td>03</td><td rowspan="2">Coordinate System: BNG Datum: OSGB36</td></tr><tr><td>Date</td><td>13/11/18</td></tr><tr><td>Figure</td><td>23.2</td><td></td></tr></table>			Drg No	EA2-GEN-DA-SPR-008381		Rev	03	Coordinate System: BNG Datum: OSGB36	Date	13/11/18	Figure	23.2	
	Drg No	EA2-GEN-DA-SPR-008381																					
	Rev	03	Coordinate System: BNG Datum: OSGB36																				
	Date	13/11/18																					
	Figure	23.2																					
02	24/09/2018	BJF	Third Issue	Checked:	BJF	Scale @ A3																	
01	30/08/2018	BJF	Second Issue	Checked:	BJF	<small>Source: © Crown copyright and database rights 2018. Ordnance Survey 0100031673. Contains SNH information licensed under the Open Government Licence v3.0.</small>																	
Rev	Date	By	Comment	Approved:	RD	<small>This map has been produced to the latest known information at the time of issue, and has been produced for your information only. Please consult with the SPR Onshore GIS team to ensure the content is still current before using the information contained on this map. To the fullest extent permitted by law, we accept no responsibility or liability (whether in contract, tort (including negligence) or otherwise in respect of any errors or omissions in the information contained in the map and shall not be liable for any loss, damage or expense caused by such errors or omissions.</small>																	



Confidential - Figure Removed

Legend

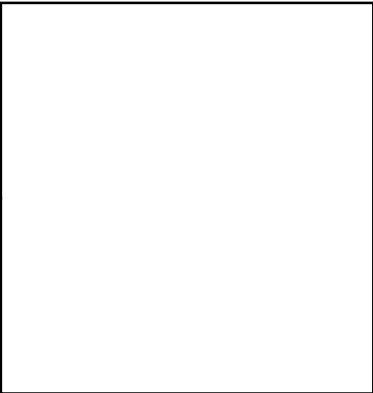



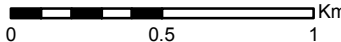
	03	13/11/2018	BJF	Third Issue.			1:25,000		<div>East Anglia TWO</div> <div>Woodlark Observations 2018</div> <div>CONFIDENTIAL</div>	Drg No		EA2-GEN-DA-SPR-008382	
	02	24/09/2018	BJF	Second Issue.	Prepared:	BJF	Scale @ A3			Rev	03	Coordinate System: BNG Datum: OSGB36	
	01	30/08/2018	BJF	First Issue.	Checked:	BJF	<small>Source: © Crown copyright and database rights 2018. Ordnance Survey 0100031673. This map has been produced to the latest known information at the time of issue, and has been produced for your information only. Please consult with the SPR Offshore GIS team to ensure the content is still current before using the information contained on this map. To the fullest extent permitted by law, we accept no responsibility or liability (whether in contract, tort (including negligence) or otherwise in respect of any errors or omissions in the information contained in the map and shall not be liable for any loss, damage or expense caused by such errors or omissions.</small>						
	Rev	Date	By	Comment	Approved:	RD				Figure	23.3		

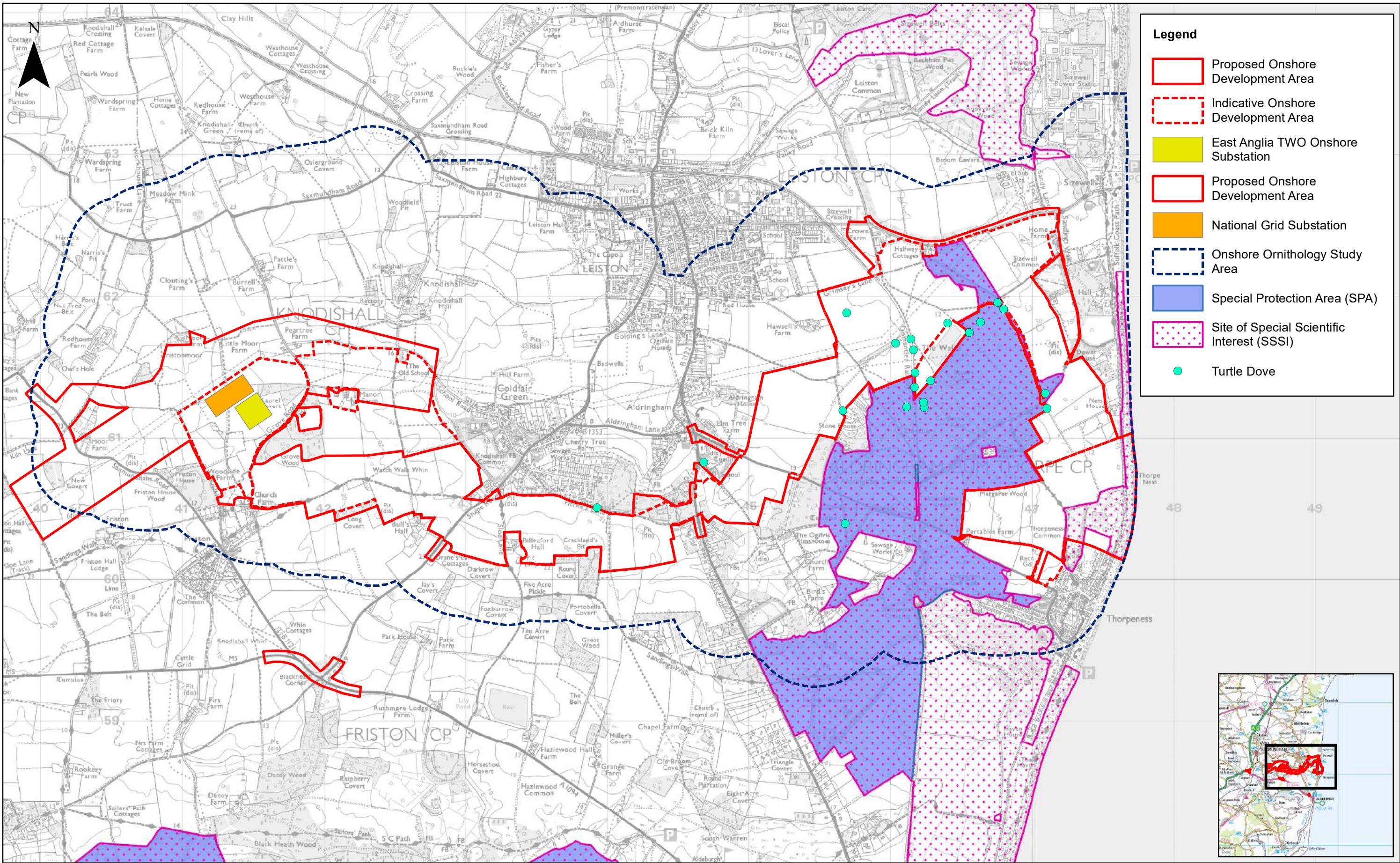




Confidential - Figure Removed

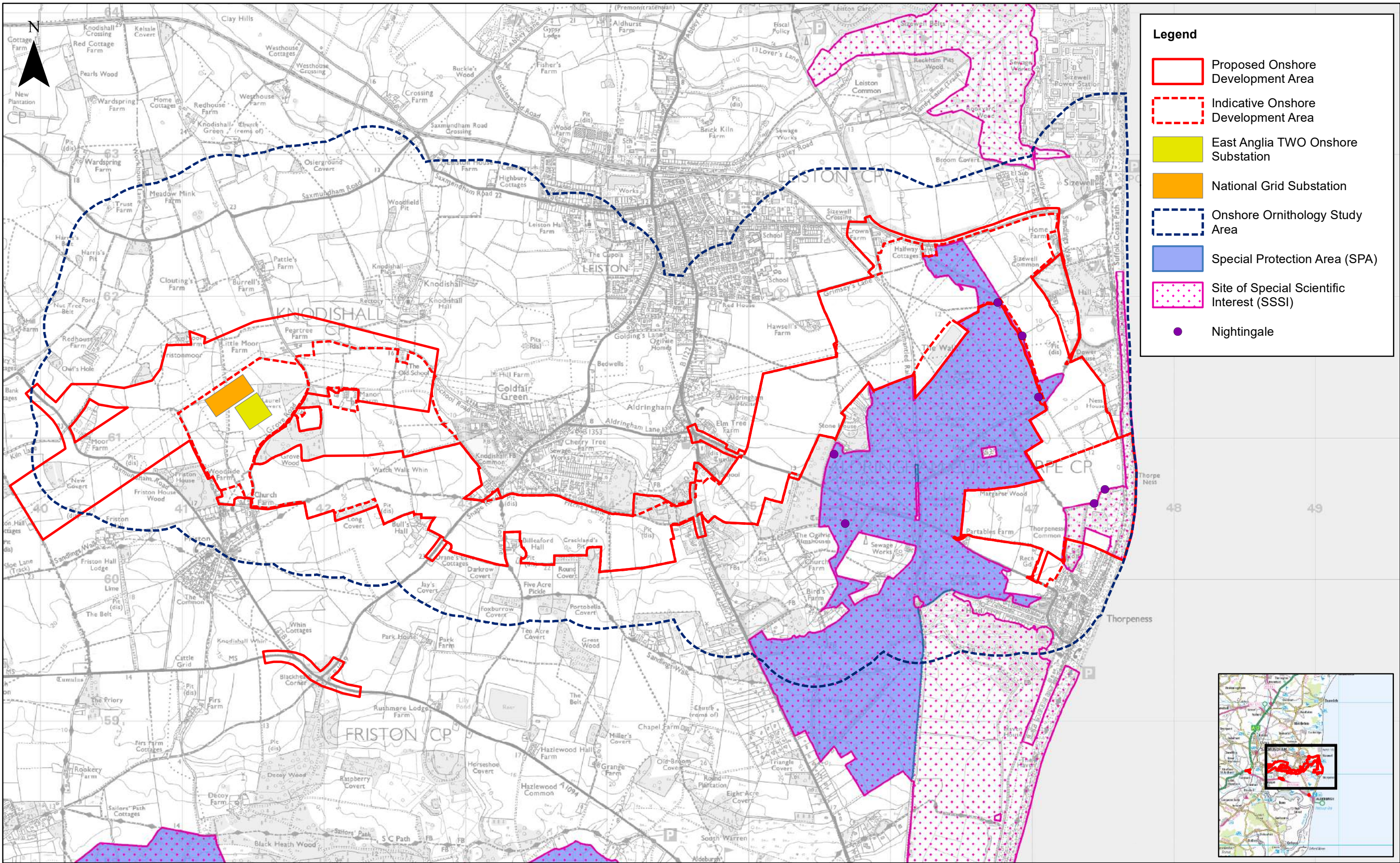
Legend





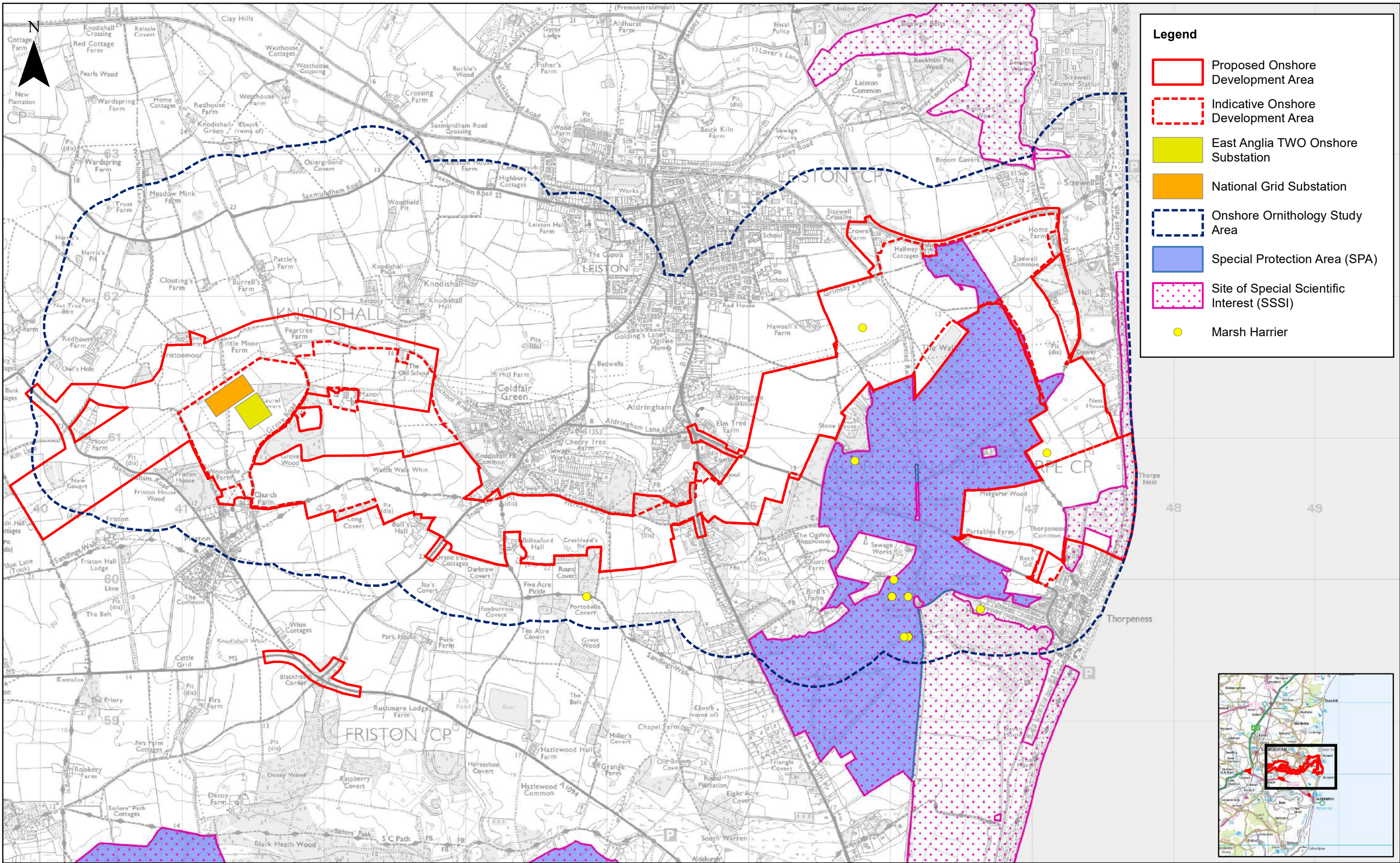
	03	13/11/2018	BJF	Third Issue.			1:25,000		<div>East Anglia TWO</div> <div>Nightjar Observations 2018</div> <div>CONFIDENTIAL</div>	Drg NoEA2-GEN-DA-SPR-008383			
	02	24/09/2018	BJF	Second Issue.	Prepared:	BJF	Scale @ A3			Rev03	Coordinate System: BNG Datum: OSGB36		
	01	30/08/2018	BJF	First Issue.	Checked:	BJF	<small>Source: © Crown copyright and database rights 2018. Ordnance Survey 0100031673. This map has been produced to the latest known information at the time of issue, and has been produced for your information only. Please consult with the SPR Offshore GIS team to ensure the content is still current before using the information contained on this map. To the fullest extent permitted by law, we accept no responsibility or liability (whether in contract, tort (including negligence) or otherwise in respect of any errors or omissions in the information contained in the map and shall not be liable for any loss, damage or expense caused by such errors or omissions.</small>						
	Rev	Date	By	Comment	Approved:	RD				Figure23.4			





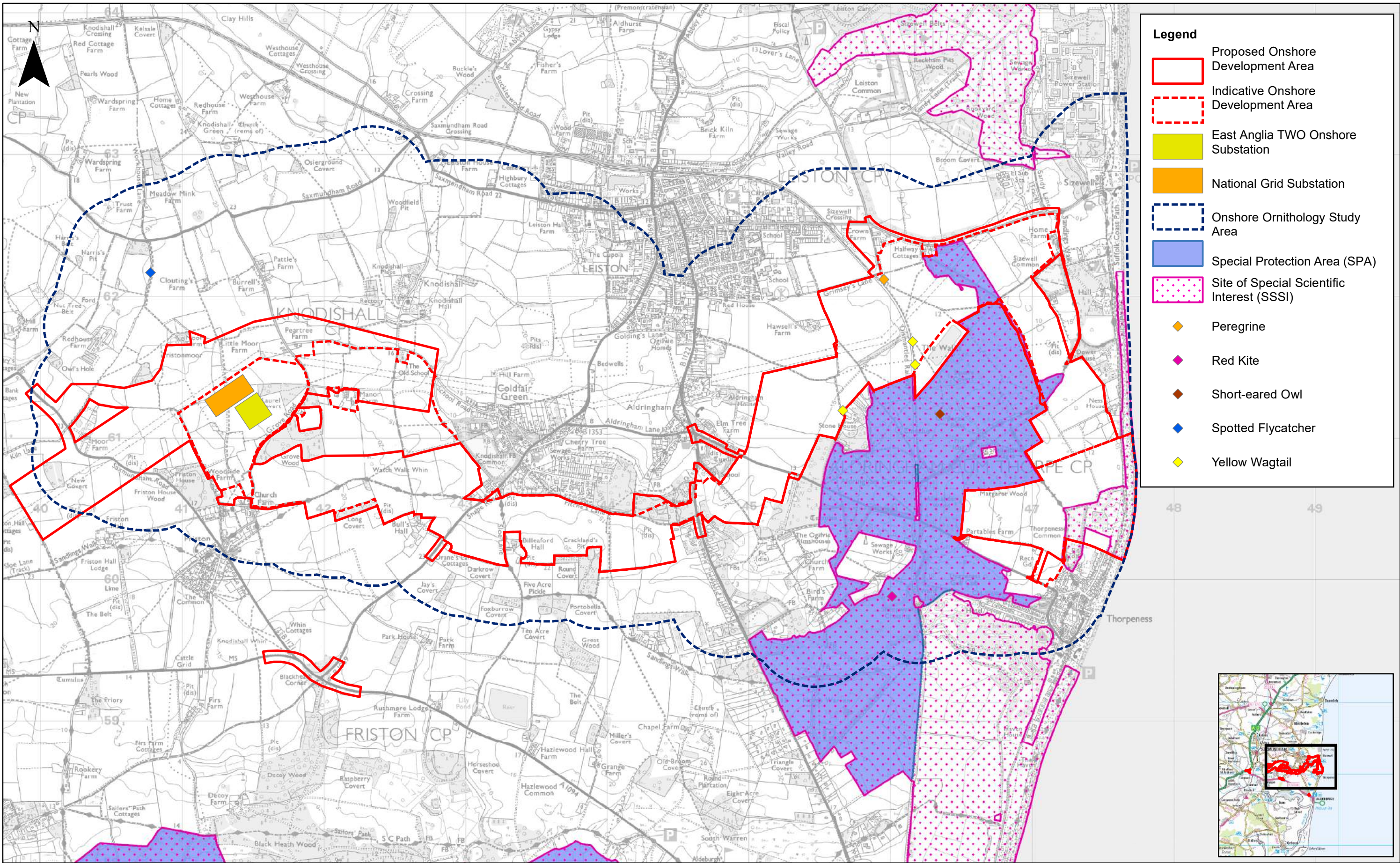
	03	13/11/2018	BJF	Fourth Issue	Checked:	BJF	1:25,000		<h1>East Anglia TWO</h1> <h2>Turtle Dove Observations 2018</h2>	Drg No			EA2-GEN-DA-SPR-008384	
	02	24/09/2018	BJF	Third Issue	Checked:	BJF	Scale @ A3			Rev		03		Coordinate System: BNG Datum: OSGB36
	01	30/08/2018	BJF	Second Issue	Checked:	BJF				Date		13/11/18		
	Rev	Date	By	Comment	Approved:	RD				Figure		23.5		
	<p>Source: © Crown copyright and database rights 2018. Ordnance Survey 0100031673.</p> <p>This map has been produced to the latest known information at the time of issue, and has been produced for your information only. Please consult with the SPR Offshore GIS team to ensure the content is still current before using the information contained on this map. To the fullest extent permitted by law, we accept no responsibility or liability (whether in contract, tort (including negligence) or otherwise in respect of any errors or omissions in the information contained in the map and shall not be liable for any loss, damage or expense caused by such errors or omissions.</p>													





	03	13/11/2018	BJF	Fourth Issue	Checked:	BJF	1:25,000	 Source: © Crown copyright and database rights 2018. Ordnance Survey 0100031673. This map has been produced to the latest known information at the time of issue, and has been produced for your information only. Please consult with the SPR Offshore GIS team to ensure the content is still current before using the information contained on this map. To the fullest extent permitted by law, we accept no responsibility or liability (whether in contract, tort (including negligence) or otherwise in respect of any errors or omissions in the information contained in the map and shall not be liable for any loss, damage or expense caused by such errors or omissions.	<h1>East Anglia TWO</h1> <h2>Nightingale Observations 2018</h2>	Drg No		EA2-GEN-DA-SPR-008385	
	02	24/09/2018	BJF	Third Issue	Checked:	BJF	Scale @ A3			Rev	03	Coordinate System: BNG Datum: OSGB36	
	01	30/08/2018	BJF	Second Issue	Checked:	BJF				Date	13/11/18		
	Rev	Date	By	Comment	Approved:	RD	Figure			23.6			



	03	13/11/2018	BJF	Fourth Issue	Checked:	BJF	1:25,000	 0 0.25 0.5 1 Km	<h1>East Anglia TWO</h1> <h2>Marsh Harrier Observations 2018</h2>	Drg No		EA2-GEN-DA-SPR-008386		
	02	24/09/2018	BJF	Third Issue	Checked:	BJF	Scale @ A3			Rev	03	Coordinate System: BNG Datum: OSGB36		
	01	30/08/2018	BJF	Second Issue	Checked:	BJF				Date	13/11/18			
	Rev	Date	By	Comment	Approved:	RD				Figure	23.7			

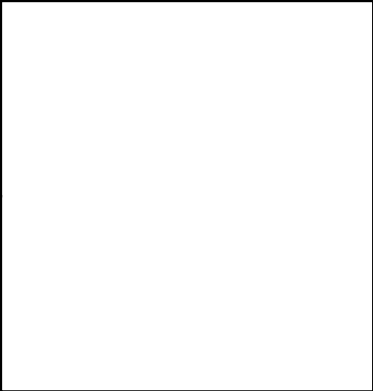



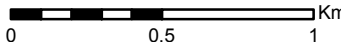
	03	13/11/2018	BJF	Fourth Issue	Checked:	BJF	1:25,000	 0 0.25 0.5 1 Km	<h1>East Anglia TWO</h1> <h2>Other Target Species Observations 2018</h2>	Drg No		EA2-GEN-DA-SPR-008388		
	02	24/09/2018	BJF	Third Issue	Checked:	BJF	Scale @ A3			Rev		03		Coordinate System: BNG Datum: OSGB36
	01	30/08/2018	BJF	Second Issue	Checked:	BJF				Date		13/11/18		
	Rev		Date	By	Comment	Approved:	RD			Figure		23.8		
	<small>Source: © Crown copyright and database rights 2018. Ordnance Survey 0100031673. This map has been produced to the latest known information at the time of issue, and has been produced for your information only. Please consult with the SPR Offshore GIS team to ensure the content is still current before using the information contained on this map. To the fullest extent permitted by law, we accept no responsibility or liability (whether in contract, tort (including negligence) or otherwise in respect of any errors or omissions in the information contained in the map and shall not be liable for any loss, damage or expense caused by such errors or omissions.</small>													



Confidential - Figure Removed

Legend



	03	13/11/2018	BJF	Third Issue.			1:25,000		<h1>East Anglia TWO</h1> <h2>Other Schedule 1 Target Species Records 2018</h2> <p>CONFIDENTIAL</p>	Drg No		EA2-GEN-DA-SPR-008387		
	02	24/09/2018	BJF	Second Issue.	Prepared:	BJF	Scale @ A3			Rev	03	Coordinate System: BNG Datum: OSGB36		
	01	30/08/2018	BJF	First Issue.	Checked:	BJF	<small>Source: © Crown copyright and database rights 2018. Ordnance Survey 0100031673. This map has been produced to the latest known information at the time of issue, and has been produced for your information only. Please consult with the SPR Offshore GIS team to ensure the content is still current before using the information contained on this map. To the fullest extent permitted by law, we accept no responsibility or liability (whether in contract, tort (including negligence) or otherwise in respect of any errors or omissions in the information contained in the map and shall not be liable for any loss, damage or expense caused by such errors or omissions.</small>							
	Rev	Date	By	Comment	Approved:	RD				Figure	23.9			

This page is intentionally blank