



**SCOTTISHPOWER
RENEWABLES**

East Anglia TWO Offshore Windfarm

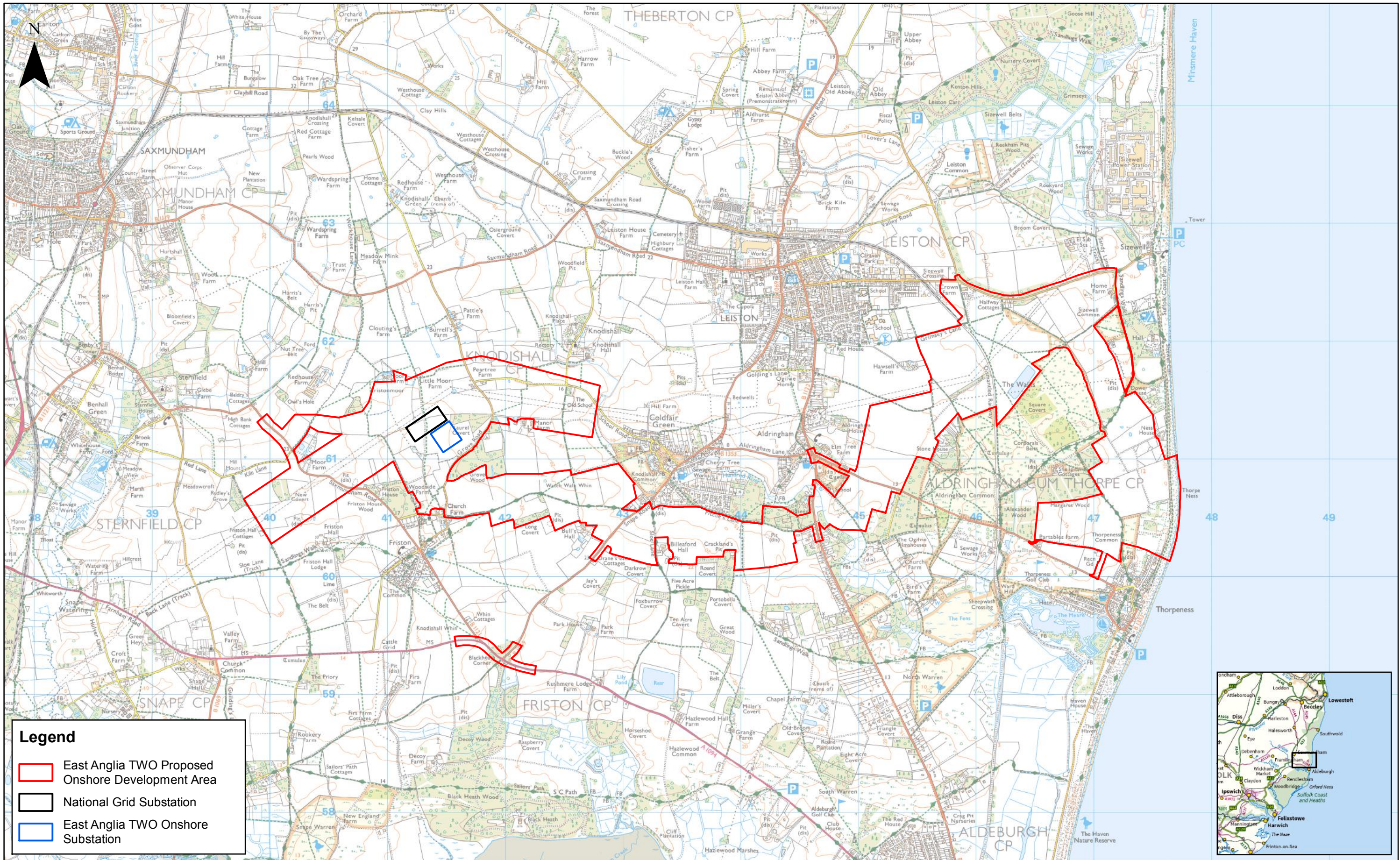
Chapter 21


Land Use

Figures

**Preliminary Environmental Information
Volume 2**

This page is intentionally blank





| | | | | | |
|-----|------------|----|---------------|-----------|----|
| 2 | 12/11/2018 | FC | Second Issue. | Prepared: | FC |
| 1 | 03/07/2018 | FC | First Issue. | Checked: | RJ |
| Rev | Date | By | Comment | Approved: | AH |

1:30,000
Scale @ A3

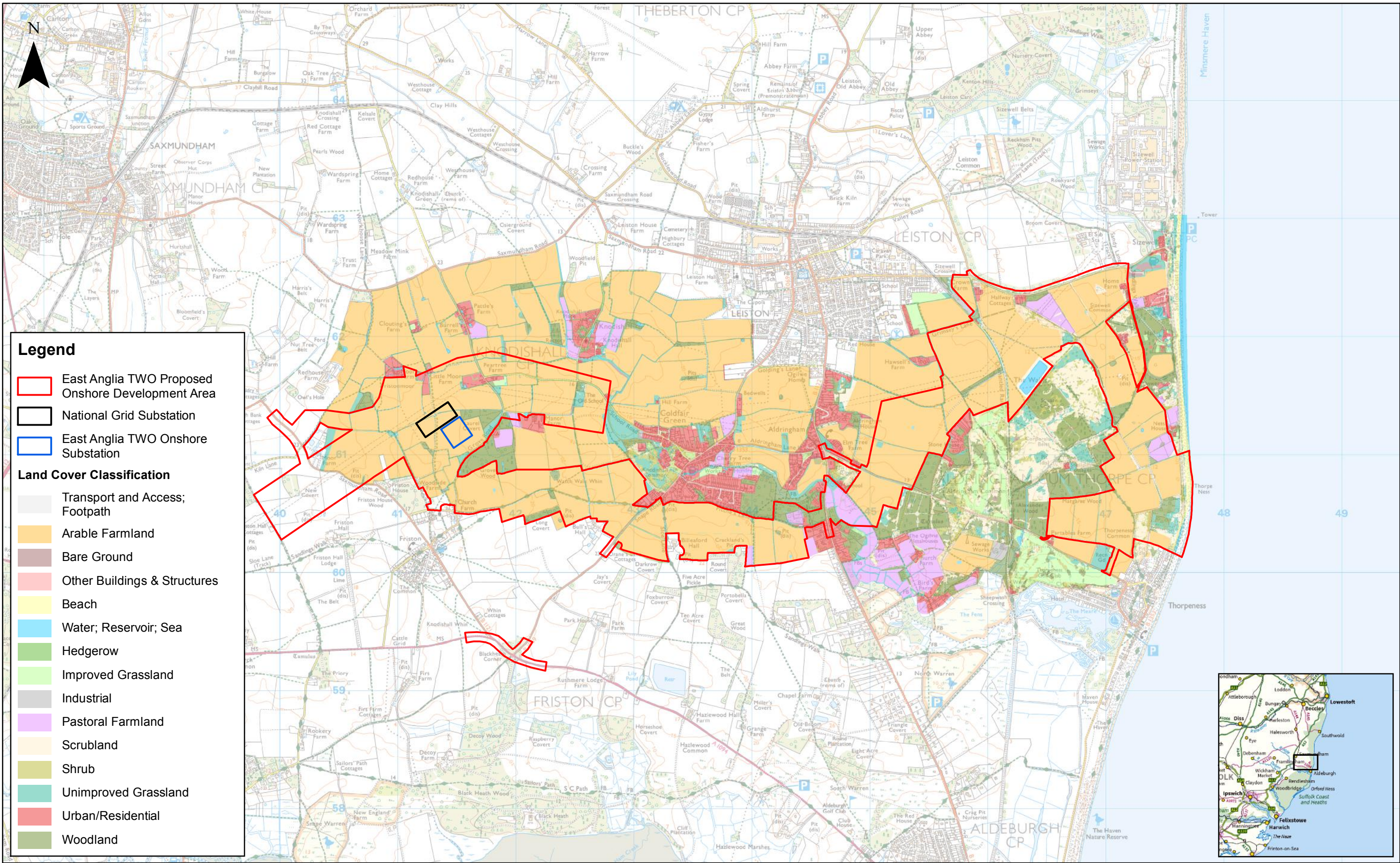
0 0.5 1 Km

Source: © Crown copyright and database rights 2018. Ordnance Survey 0100031673.
This map has been produced to the latest known information at the time of issue, and has been produced for your information only. Please consult with the SPR Offshore GIS team to ensure the content is still current before using the information contained on this map. To the fullest extent permitted by law, we accept no responsibility or liability (whether in contract, tort (including negligence) or otherwise) in respect of any errors or omissions in the information contained in the map and shall not be liable for any loss, damage or expense caused by such errors or omissions.

East Anglia TWO

Study Area

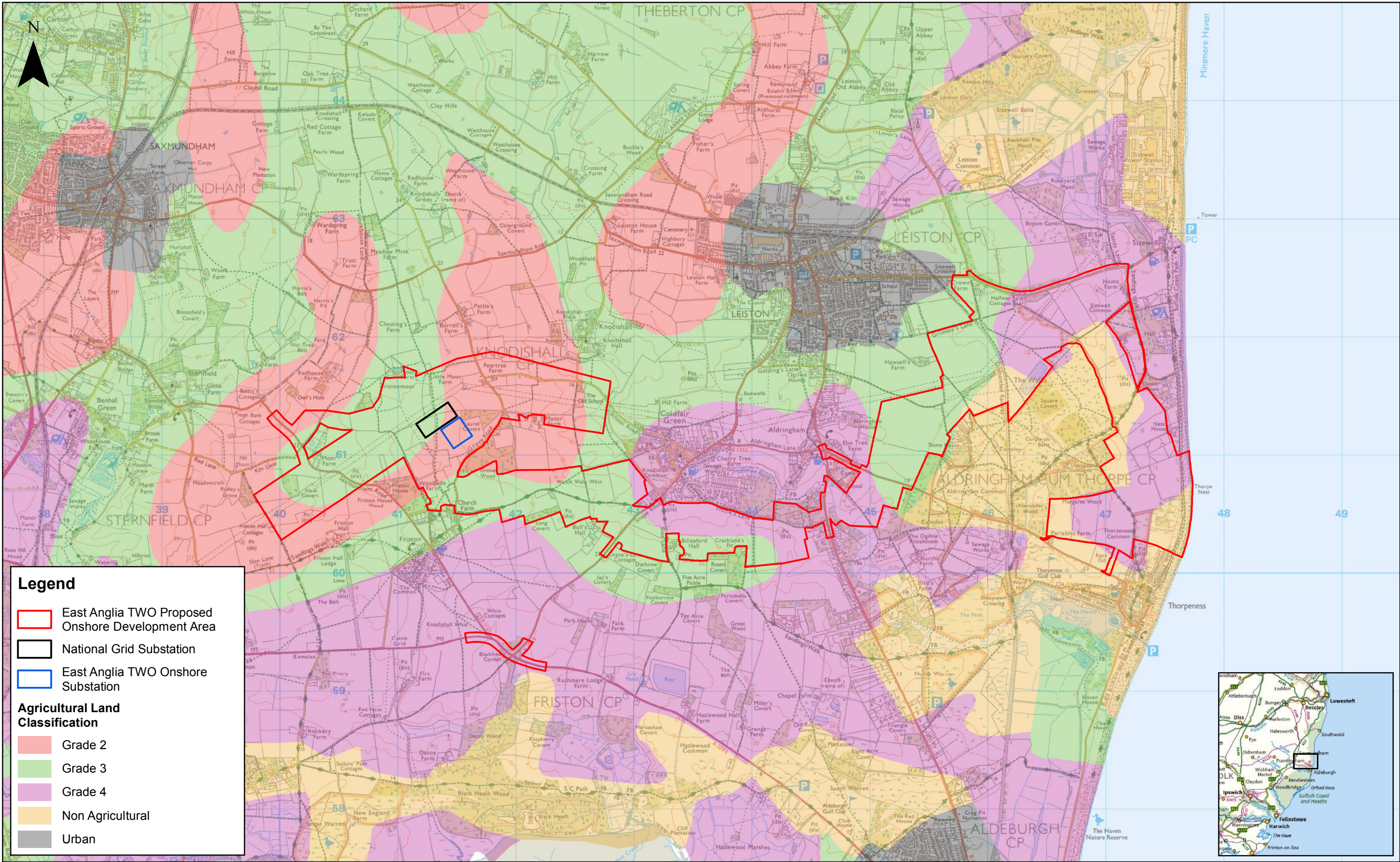
| | | |
|--------|------------------------------|------------------------|
| Drg No | EA1N-EA2-DEV-DRG-IBR-00TBC55 | |
| Rev | 2 | Coordinate System: BNG |
| Date | 12/11/18 | Datum: OSGB36 |
| Figure | 21.1 | |



| | | | | | |
|-----|------------|----|---------------|-----------|----|
| 2 | 12/11/2018 | FC | Second Issue. | Prepared: | FC |
| 1 | 03/07/2018 | FC | First Issue. | Checked: | RJ |
| Rev | Date | By | Comment | Approved: | AH |

| | |
|--|------------|
| 1:30,000 | Scale @ A3 |
| Source: ©APEM, 2018. © Crown copyright and database rights 2018. Ordnance Survey 0100031673. | |
| This map has been produced to the latest known information at the time of issue, and has been produced for your information only. Please consult with the SPR Offshore GIS team to ensure the content is still current before using the information contained on this map. | |
| To the fullest extent permitted by law, we accept no responsibility or liability (whether in contract, tort (including negligence) or otherwise) in respect of any errors or omissions in the information contained in the map and shall not be liable for any loss, damage or expense caused by such errors or omissions. | |

| | | | |
|---------------------------|--|---------------------------|------------------------------|
| East Anglia TWO | | Drg No | EA1N-EA2-DEV-DRG-IBR-00TBC56 |
| Land Cover Mapping | | Rev | 2 |
| | | Date | 12/11/18 |
| | | Figure | 21.2 |
| | | Coordinate System: | BNG |
| | | Datum: | OSGB36 |



| | | | |
|-----|------------|----|---------------|
| 2 | 12/11/2018 | FC | Second Issue. |
| 1 | 03/07/2018 | FC | First Issue. |
| Rev | Date | By | Comment |

Prepared: FC

Checked: RJ

Approved: AH

1:30,000
Scale @ A3

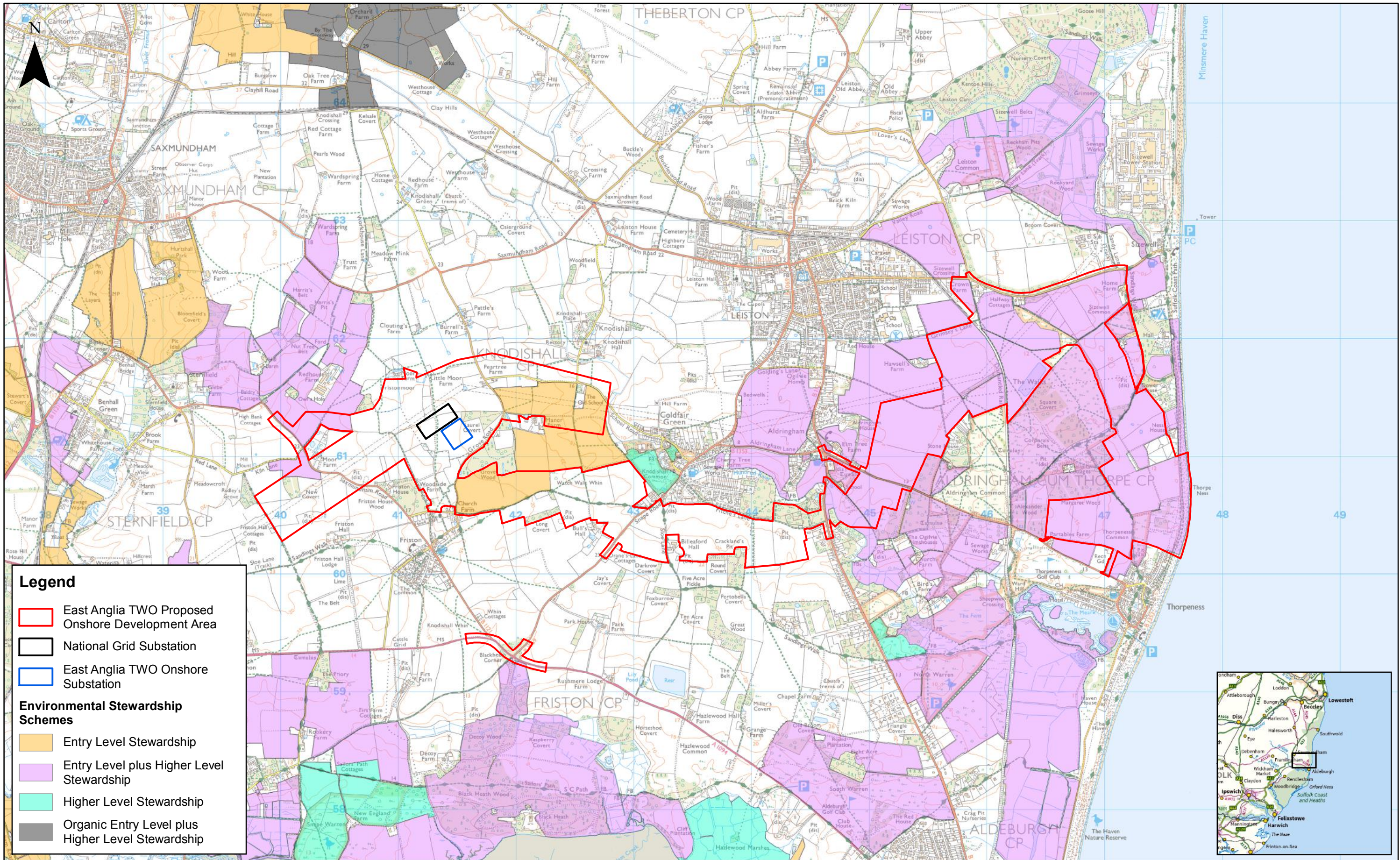
0 0.5 1 Km

Source: © Natural England, 2018. © Crown copyright and database rights 2018. Ordnance Survey 0100031673.
This map has been produced to the latest known information at the time of issue, and has been produced for your information only. Please consult with the SPR Offshore GIS team to ensure the content is still current before using the information contained on this map. To the fullest extent permitted by law, we accept no responsibility or liability (whether in contract, tort (including negligence) or otherwise) in respect of any errors or omissions in the information contained in the map and shall not be liable for any loss, damage or expense caused by such errors or omissions.


East Anglia TWO

Agricultural Land Classification

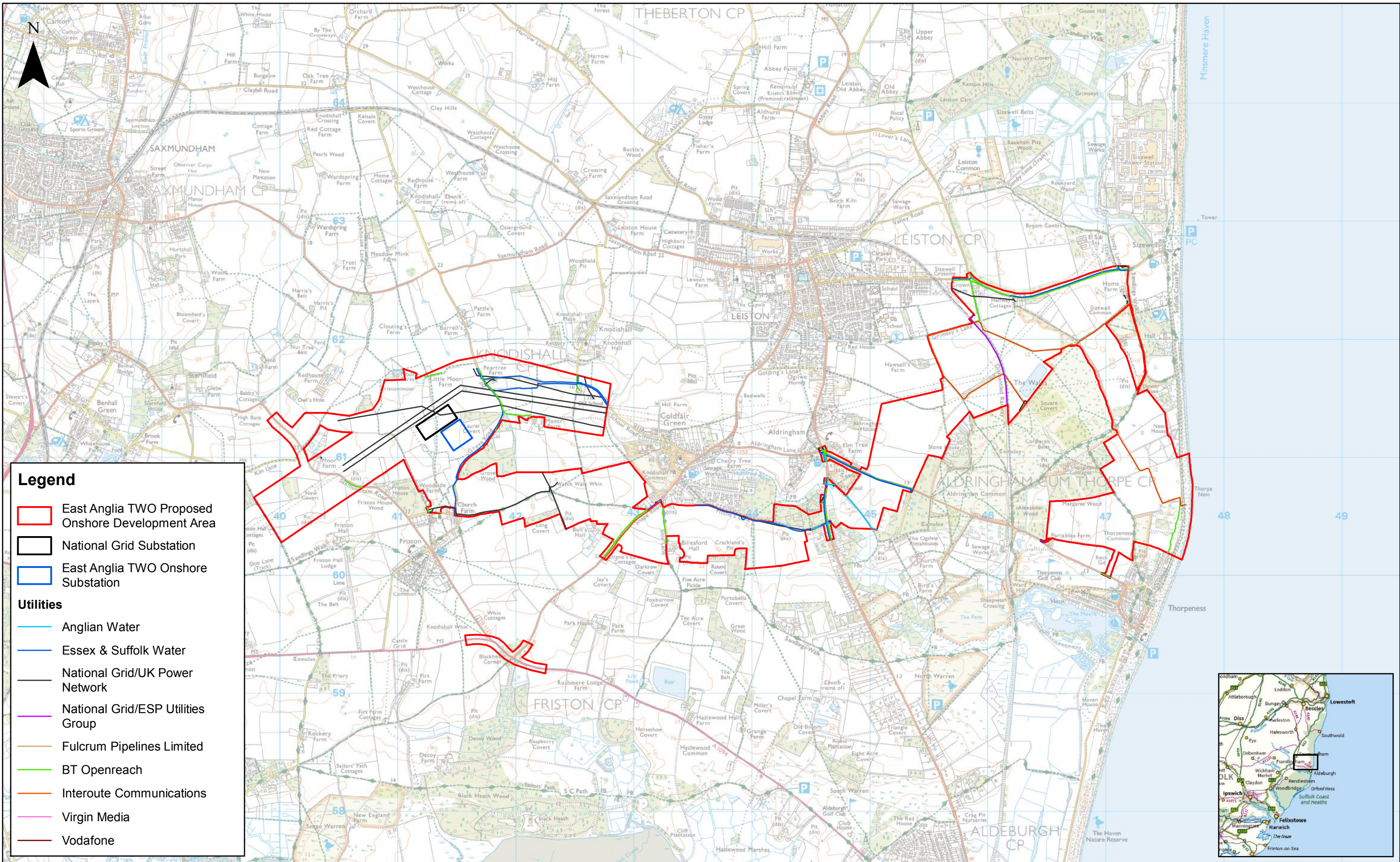
| | | |
|--------|------------------------------|---|
| Drg No | EA1N-EA2-DEV-DRG-IBR-00TBC57 | Coordinate System: BNG Datum: OSGB36 |
| Rev | 2 | |
| Date | 12/11/18 | |
| Figure | 21.3 | |



| | | | |
|-----|------------|----|---------------|
| 2 | 12/11/2018 | FC | Second Issue. |
| 1 | 03/07/2018 | FC | First Issue. |
| Rev | Date | By | Comment |

| | | |
|--|---|----|
| 1:30,000 |  | Km |
| Scale @ A3 | | |
| Source: © Natural England, 2018. © Crown copyright and database rights 2018. Ordnance Survey 0100031673. | | |
| This map has been produced to the latest known information at the time of issue, and has been produced for your information only. Please consult with the SPR Offshore GIS team to ensure the content is still current before using the information contained on this map. To the fullest extent permitted by law, we accept no responsibility or liability (whether in contract, tort (including negligence) or otherwise in respect of any errors or omissions in the information contained in the map and shall not be liable for any loss, damage or expense caused by such errors or omissions. | | |
| Prepared: | FC | |
| Checked: | RJ | |
| Approved: | AH | |

| | | | | |
|----------------------------------|--|--------|------------------------------|---|
| East Anglia TWO | | Drg No | EA1N-EA2-DEV-DRG-IBR-00TBC58 | |
| Environmental Stewardship Scheme | | Rev | 2 | Coordinate System: BNG Datum: OSGB36 |
| Agreements | | Date | 12/11/18 | |
| | | Figure | 21.4 | |



| | | | |
|-----|------------|----|---------------|
| 2 | 12/11/2018 | FC | Second Issue. |
| 1 | 03/07/2018 | FC | First Issue. |
| Rev | Date | By | Comment |

1:30,000

Scale @ A3

0

0.5

1

Km

Source: © Emapsite, 2018. © Crown copyright and database rights 2018. Ordnance Survey 0100031673.

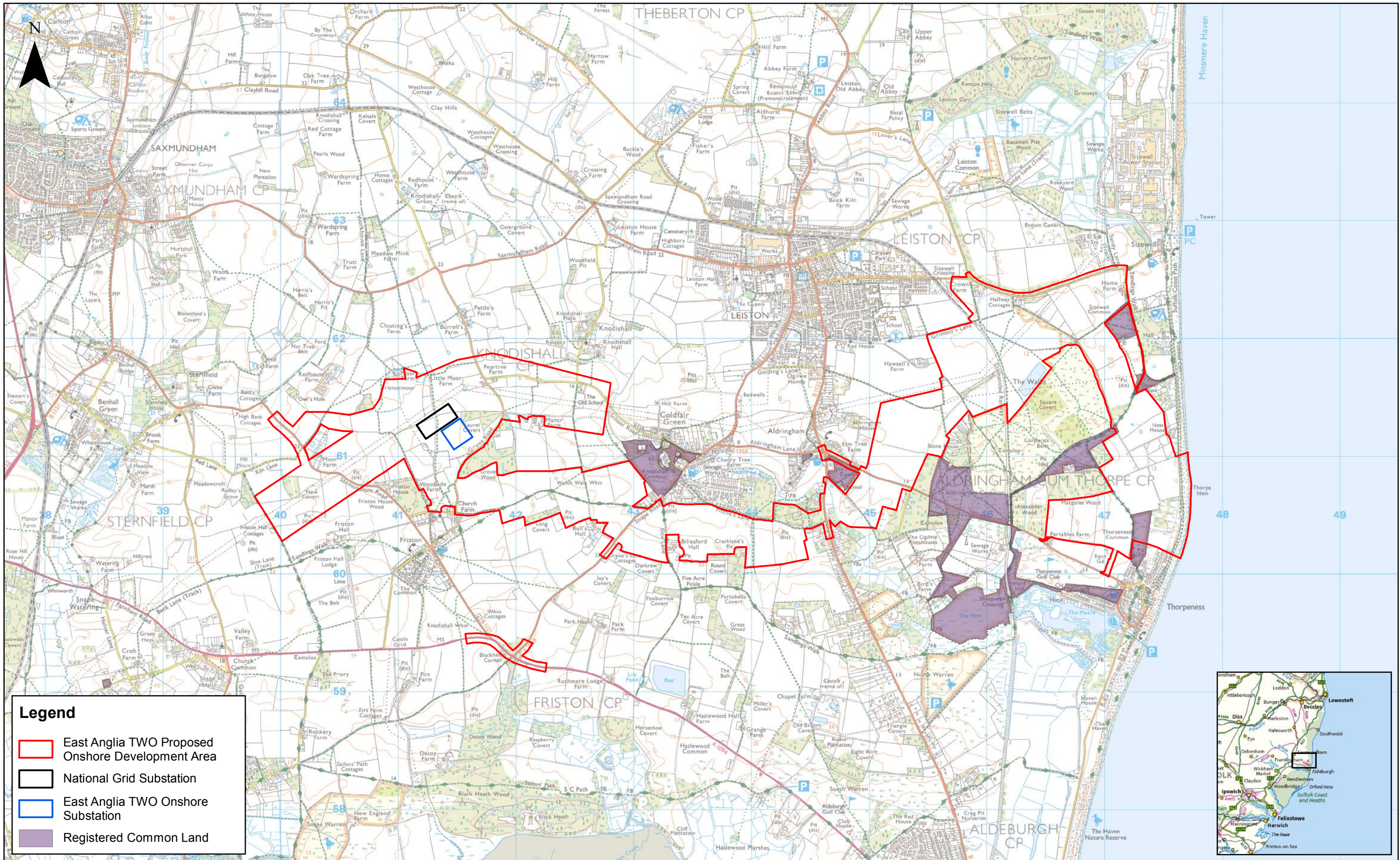
This map has been produced to the latest known information at the time of issue, and has been produced for your information only. Please consult with the SPR Offshore GIS team to ensure the content is still current before using the information contained on this map.

To the fullest extent permitted by law, we accept no responsibility or liability (whether in contract, tort (including negligence) or otherwise in respect of any errors or omissions in the information contained in the map and shall not be liable for any loss, damage or expense caused by such errors or omissions.

East Anglia TWO

Utilities

| | | |
|--------|------------------------------|------------------------|
| Drg No | EA1N-EA2-DEV-DRG-IBR-00TBC59 | |
| Rev | 2 | Coordinate System: BNG |
| Date | 12/11/18 | Datum: OSGB36 |
| Figure | 21.5 | |



| | | | |
|-----|------------|----|---------------|
| 2 | 12/11/2018 | FC | Second Issue. |
| 1 | 13/07/2018 | FC | First Issue. |
| Rev | Date | By | Comment |

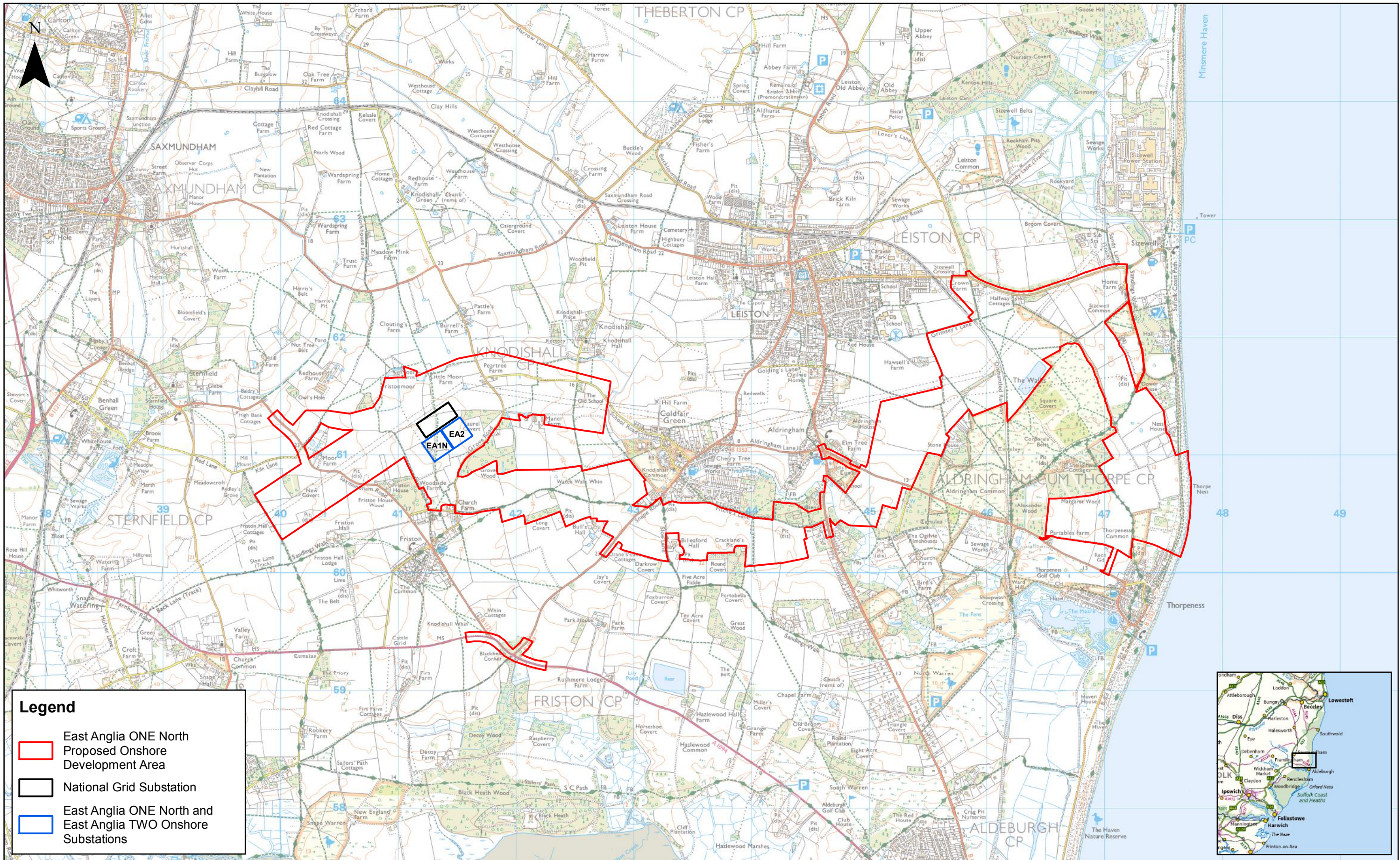
| | |
|-----------|----|
| Prepared: | FC |
| Checked: | RJ |
| Approved: | AH |


1:30,000
Scale @ A3
0 0.5 1 Km

East Anglia TWO Common Access Land

| | |
|--------|------------------------------|
| Drg No | EA1N-EA2-DEV-DRG-IBR-00TBC84 |
| Rev | 2 |
| Date | 12/11/18 |
| Figure | 21.6 |

Coordinate
System:
BNG
Datum:
OSGB36





| | | | | | |
|-----|------------|----|---------------|-----------|----|
| 2 | 12/11/2018 | FC | Second Issue. | Prepared: | FC |
| 1 | 03/07/2018 | FC | First Issue. | Checked: | RJ |
| Rev | Date | By | Comment | Approved: | AH |

1:30,000
Scale @ A3

0 0.5 1 Km

Source: © Crown copyright and database rights 2018. Ordnance Survey 0100031673.
This map has been produced to the latest known information at the time of issue, and has been produced for your information only. Please consult with the SPR Offshore GIS team to ensure the content is still current before using the information contained on this map. To the fullest extent permitted by law, we accept no responsibility or liability (whether in contract, tort (including negligence) or otherwise) in respect of any errors or omissions in the information contained in the map and shall not be liable for any loss, damage or expense caused by such errors or omissions.

East Anglia TWO

East Anglia ONE North Proposed Onshore Development Area

| | | |
|--------|-------------------------------|------------------------|
| Drg No | EA1N-EA2-DEV-DRG-IBR-00TBC107 | |
| Rev | 2 | Coordinate System: BNG |
| Date | 12/11/18 | Datum: OSGB36 |
| Figure | 21.7 | |

This page is intentionally blank