

East Anglia TWO Offshore Windfarm

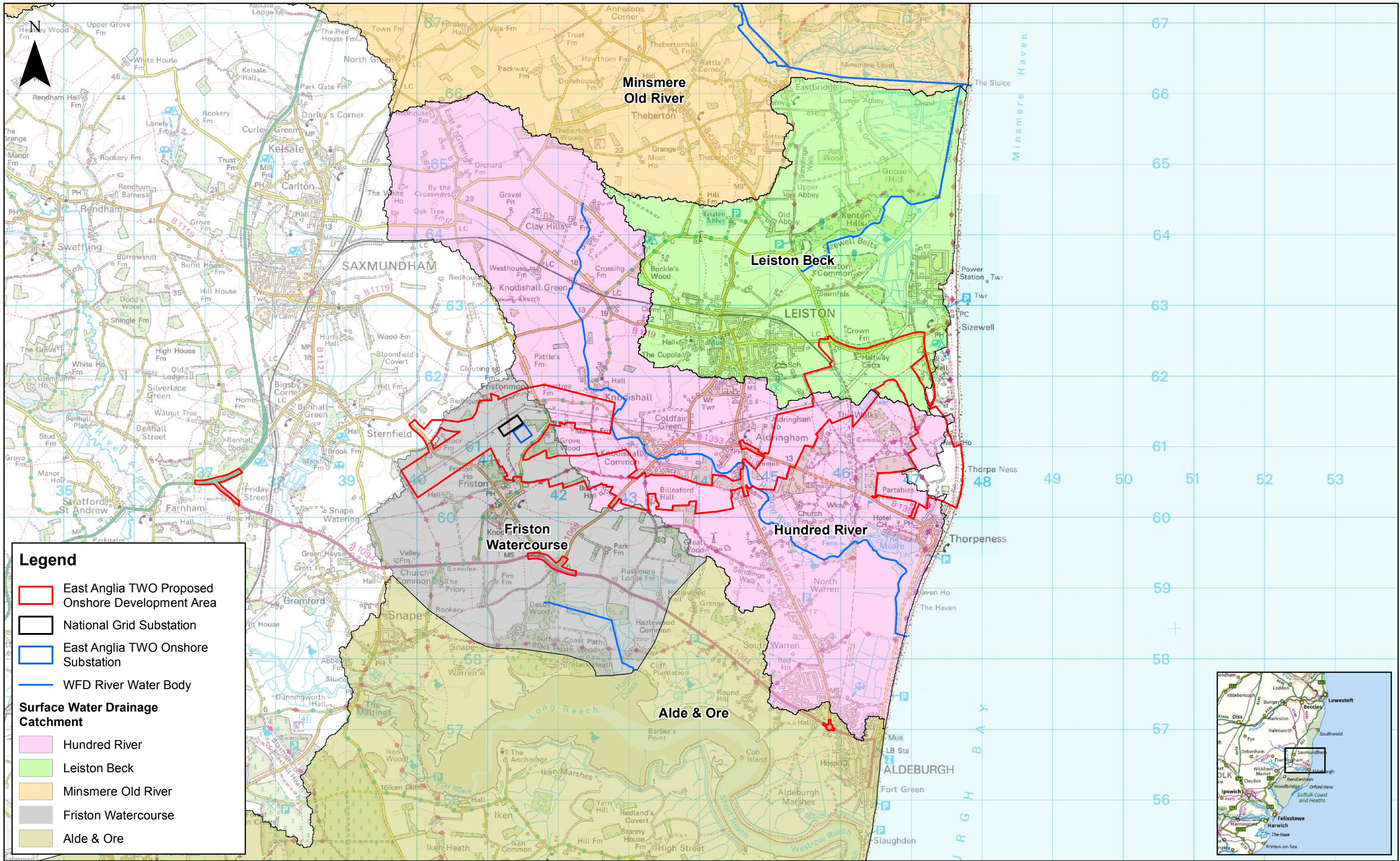
Chapter 20

Water Resources and Flood Risk

Figures

Preliminary Environmental Information
Volume 2

This page is intentionally blank



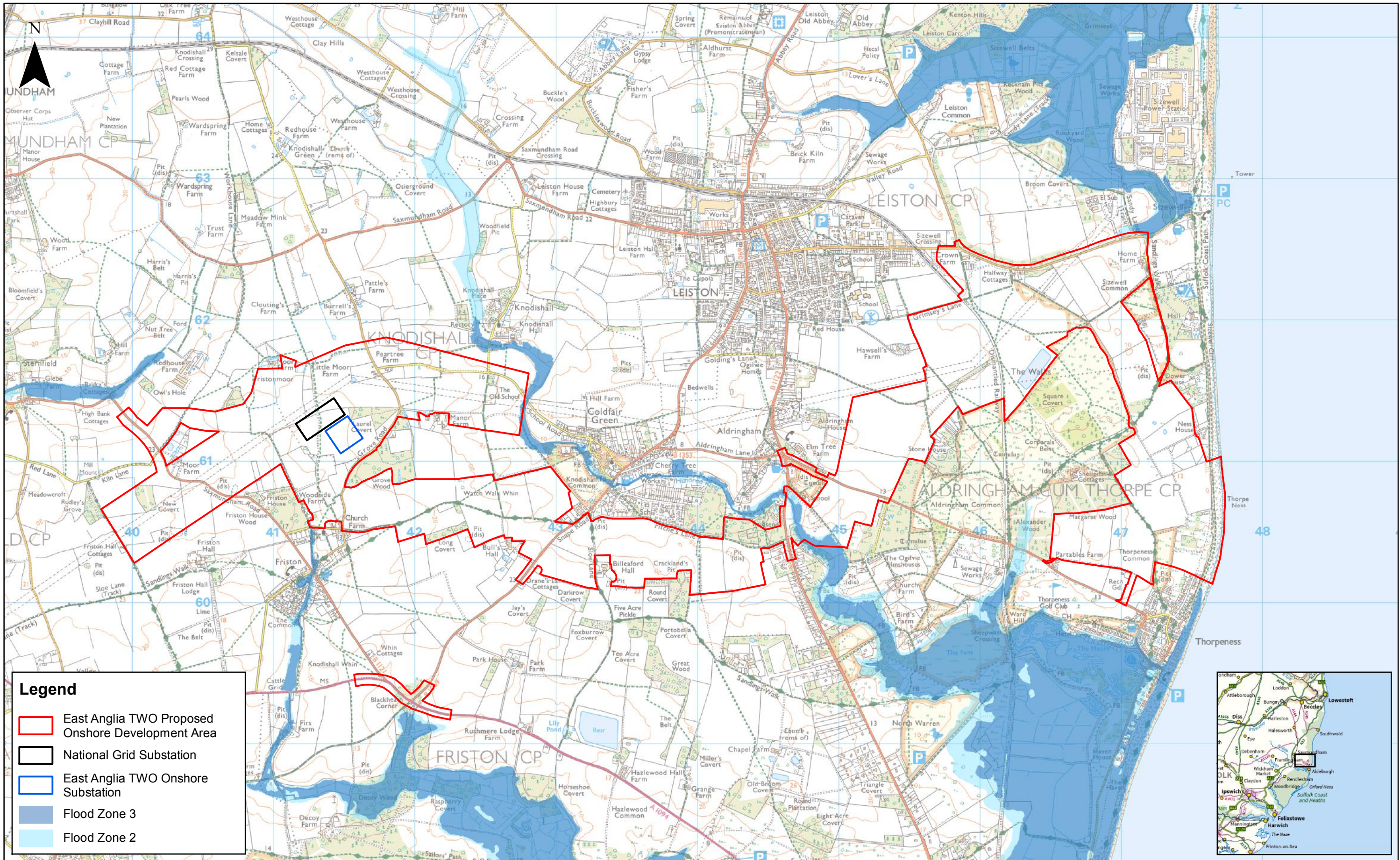
2	12/11/2018	FC	Second Issue.	Prepared:	FC
1	19/07/2018	FC	First Issue.	Checked:	ID
Rev	Date	By	Comment	Approved:	AH

1:50,000	Scale @ A3
0 1 2 Km	
Source: © Environment Agency, 2018. © Crown copyright and database rights 2018. Ordnance Survey 0100031673.	
This map has been produced to the latest known information at the time of issue, and has been produced for your information only. Please consult with the SPR Offshore GIS team to ensure the content is still current before using the information contained on this map. To the fullest extent permitted by law, we accept no responsibility or liability (whether in contract, tort (including negligence) or otherwise) in respect of any errors or omissions in the information contained in the map and shall not be liable for any loss, damage or expense caused by such errors or omissions.	


East Anglia TWO

Study Area: Surface Water Receptors

Drg No	EA1N-EA2-DEV-DRG-IBR-00TBC92	
Rev	2	Coordinate System: BNG
Date	12/11/18	Datum: OSGB36
Figure	20.1	



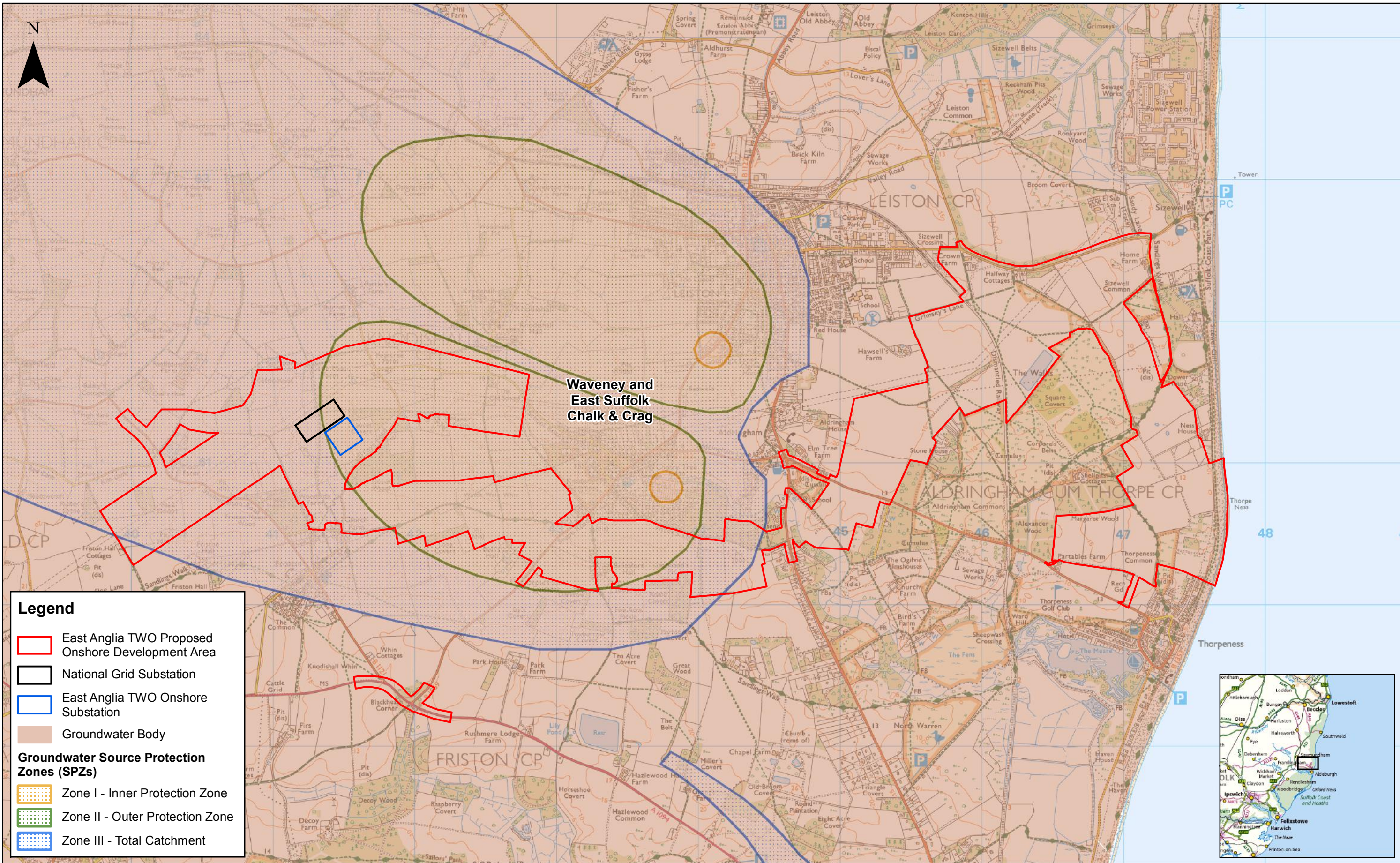
2	12/11/2018	FC	Second Issue.
1	19/07/2018	FC	First Issue.
Rev	Date	By	Comment

1:25,000	
Scale @ A3	 Km
Source: © Environment Agency, 2018. © Crown copyright and database rights 2018. Ordnance Survey 0100031673.	
<p>This map has been produced to the latest known information at the time of issue, and has been produced for your information only. Please consult with the SPR Offshore GIS team to ensure the content is still current before using the information contained on this map. To the fullest extent permitted by law, we accept no responsibility or liability (whether in contract, tort (including negligence) or otherwise in respect of any errors or omissions in the information contained in the map and shall not be liable for any loss, damage or expense caused by such errors or omissions.</p>	

East Anglia TWO

Environment Agency Flood Zones

Drg No	EA1N-EA2-DEV-DRG-IBR-00TBC94	
Rev	2	Coordinate System: BNG Datum: OSGB36
Date	12/11/18	
Figure	20.2	



Legend

East Anglia TWO Proposed Onshore Development Area

National Grid Substation

East Anglia TWO Onshore Substation


Groundwater Body

Groundwater Source Protection Zones (SPZs)

Zone I - Inner Protection Zone

Zone II - Outer Protection Zone

Zone III - Total Catchment

				1:25,000 Scale @ A3		0 0.5 1 Km		East Anglia TWO Groundwater Receptors		Drg No	EA1N-EA2-DEV-DRG-IBR-00TBC95	
2	12/11/2018	FC	Second Issue.	Prepared:	FC	<small>Source: © Environment Agency, 2018. © Crown copyright and database rights 2018. Ordnance Survey 0100031673. This map has been produced to the latest known information at the time of issue, and has been produced for your information only. Please consult with the SPR Offshore GIS team to ensure the content is still current before using the information contained on this map. To the fullest extent permitted by law, we accept no responsibility or liability (whether in contract, tort (including negligence) or otherwise in respect of any errors or omissions in the information contained in the map and shall not be liable for any loss, damage or expense caused by such errors or omissions.</small>				Rev	2	Coordinate System: BNG Datum: OSGB36
1	19/07/2018	FC	First Issue.	Checked:	ID					Date	12/11/18	
Rev	Date	By	Comment	Approved:	AH					Figure	20.3	

This page is intentionally blank