



**SCOTTISHPOWER  
RENEWABLES**

# **East Anglia TWO Offshore Windfarm**

## **Chapter 19**

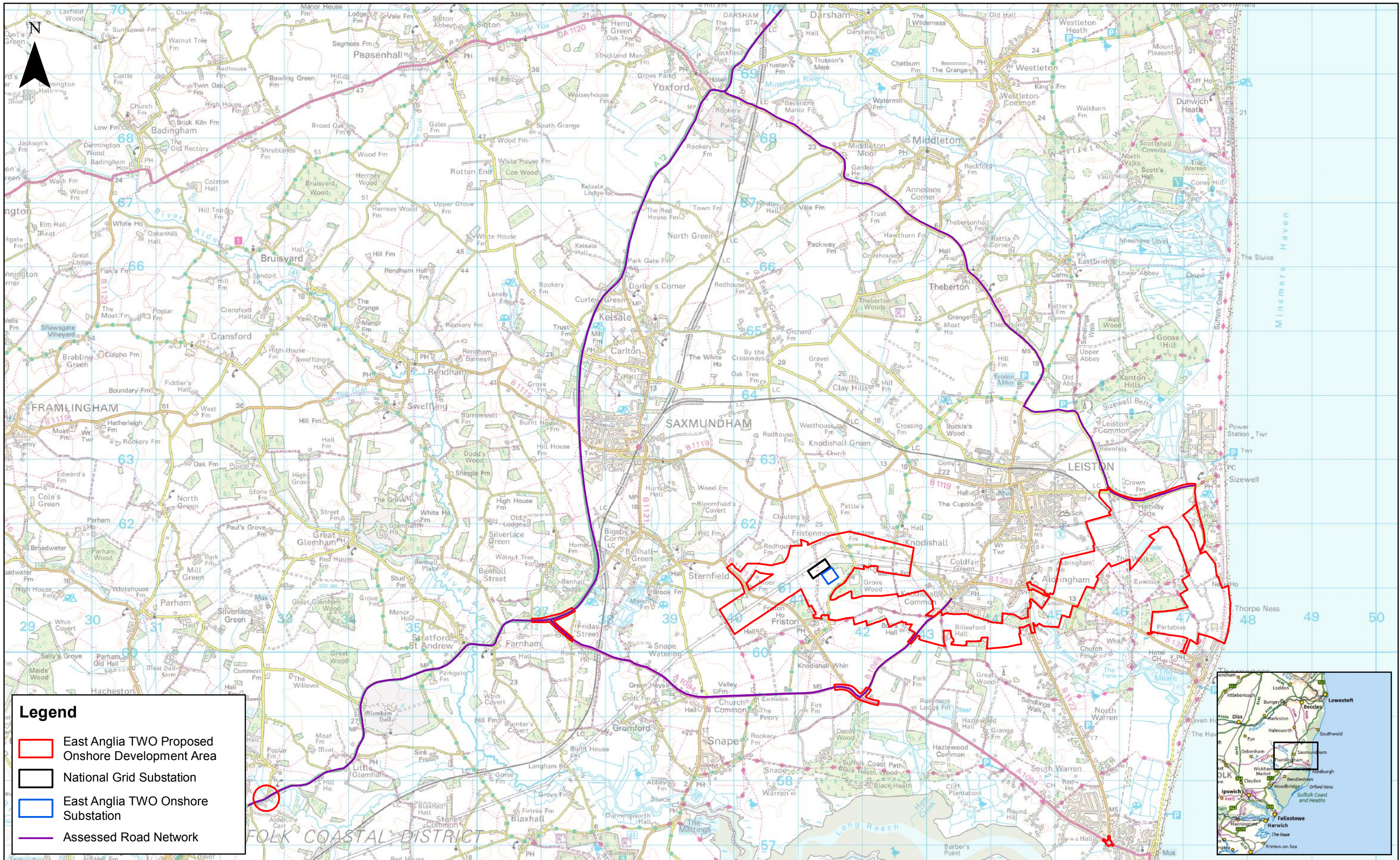
**Air Quality**

**Figures**

**Preliminary Environmental Information  
Volume 2**

**This page is intentionally blank**





2	13/11/2018	AB	Second Issue.
1	17/10/2018	AB	First Issue.
Rev	Date	By	Comment

Prepared:	AB
Checked:	CG
Approved:	AH

1:55,000

Scale @ A3

0

1

2

Km

Source: © Crown copyright and database rights 2018. Ordnance Survey 0100031673.

This map has been produced to the latest known information at the time of issue, and has been produced for your information only. Please consult with the SPR Offshore GIS team to ensure the content is still current before using the information contained on this map. To the fullest extent permitted by law, we accept no responsibility or liability (whether in contract, tort (including negligence) or otherwise) in respect of any errors or omissions in the information contained in the map and shall not be liable for any loss, damage or expense caused by such errors or omissions.

## East Anglia TWO

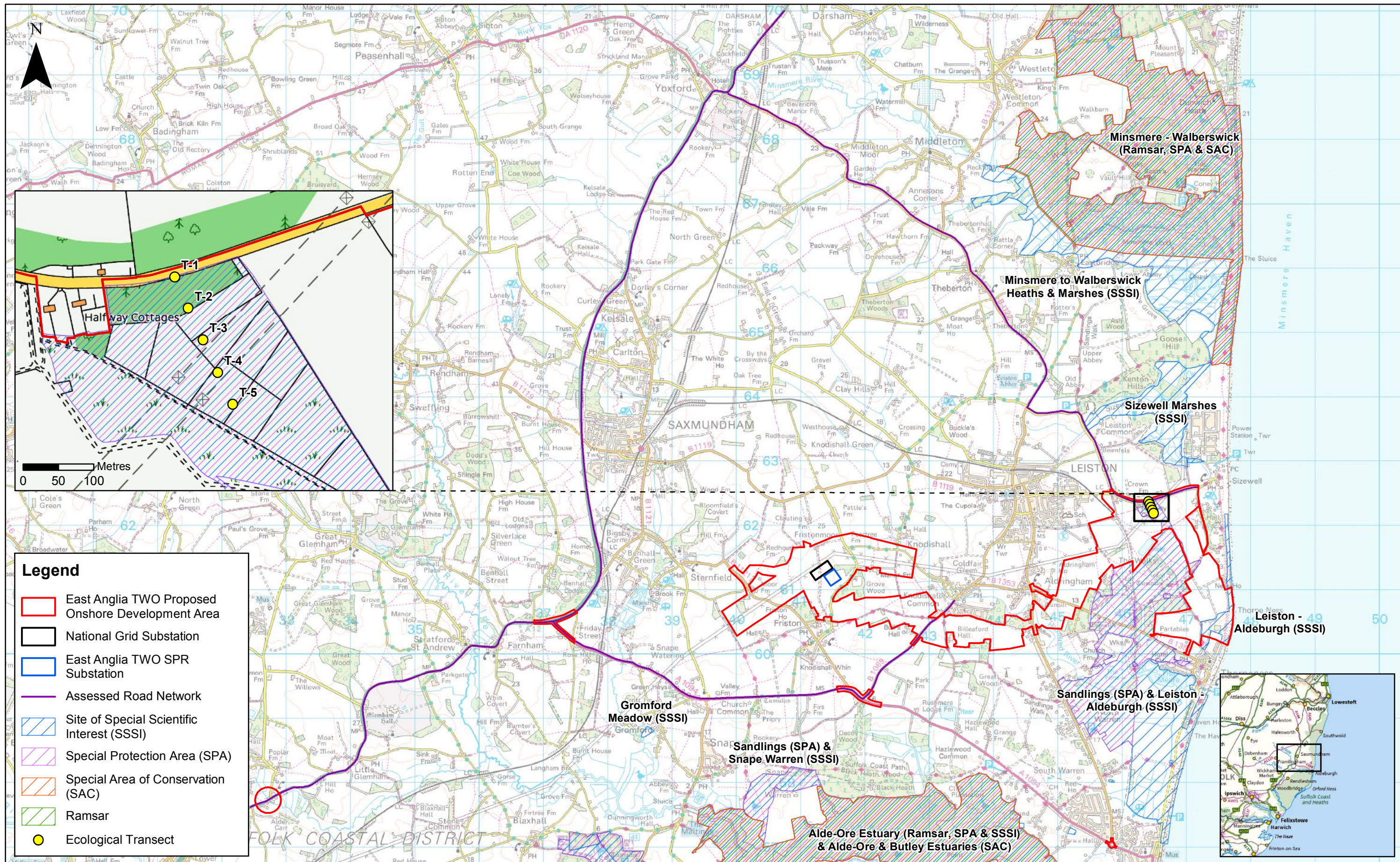
### Air Quality Study Area

Drg No	EA1N-EA2-DEV-DRG-IBR-00TBC270	Coordinate System:
Rev	2	BNG
Date	13/11/18	Datum:
Figure	19.1	OSGB36










2	13/11/2018	AB	Second Issue.
1	17/10/2018	FC	First Issue.
Rev	Date	By	Comment

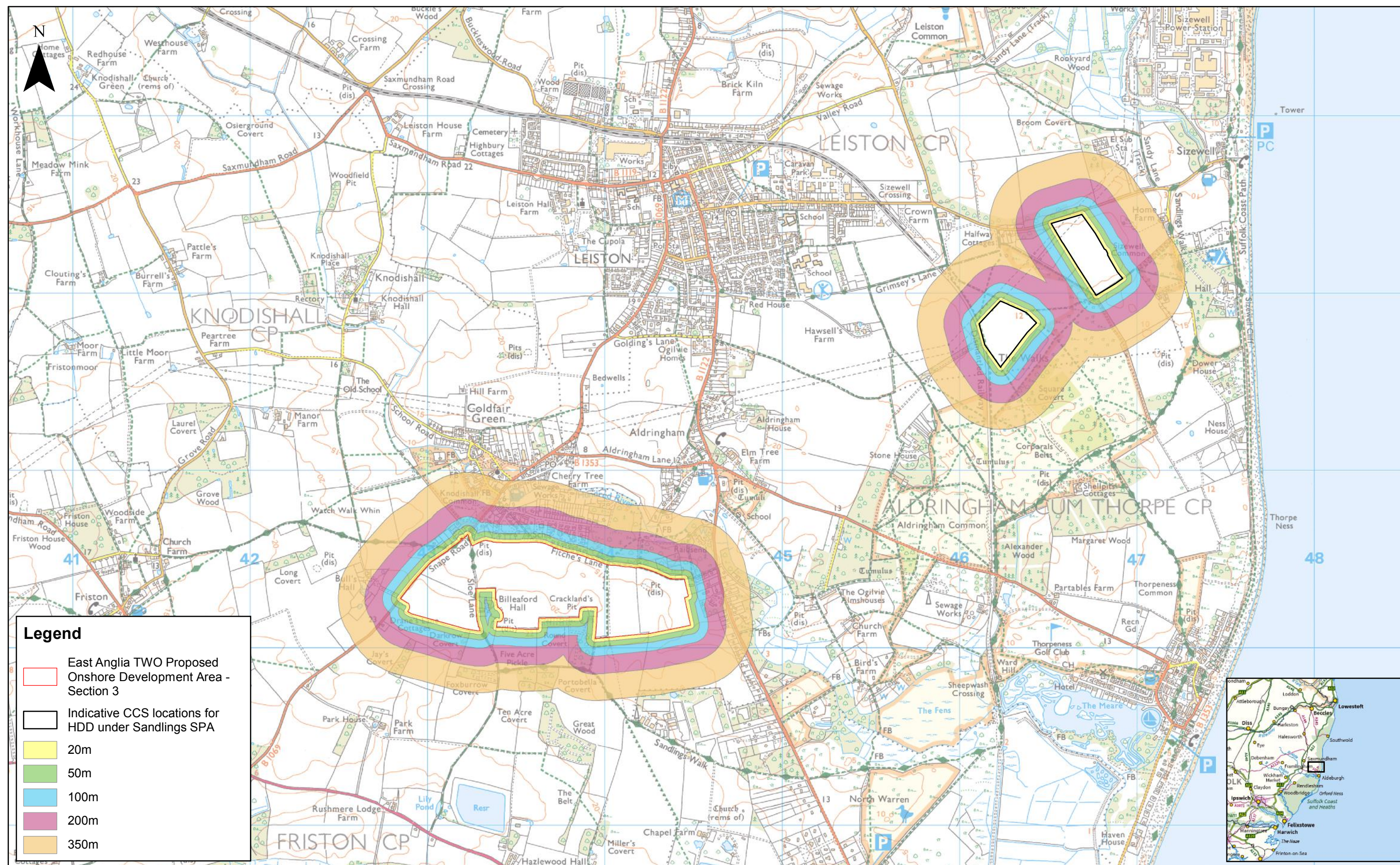
1:55,000	
Scale @ A3	
Source: © Crown copyright and database rights 2018. Ordnance Survey 0100031673.	
<p>This map has been produced to the latest known information at the time of issue, and has been produced for your information only. Please consult with the SPR Offshore GIS team to ensure the content is still current before using the information contained on this map. To the fullest extent permitted by law, we accept no responsibility or liability (whether in contract, tort (including negligence) or otherwise) in respect of any errors or omissions in the information contained in the map and shall not be liable for any loss, damage or expense caused by such errors or omissions.</p>	

## East Anglia TWO


### Sensitive Ecological Receptors

Drg No	EA1N-EA2-DEV-DRG-IBR-00TBC272	Coordinate System:	BNG
Rev	2	Datum:	OSGB36
Date	13/11/18		
Figure	19.3		





Rev	Date	By	Comment
2	14/11/2018	AB	Second Issue.
1	17/10/2018	AB	First Issue.

1:20,000	
Scale @ A3	
Source: © Crown copyright and database rights 2018. Ordnance Survey 0100031673.	
<p>This map has been produced to the latest known information at the time of issue, and has been produced for your information only. Please consult with the SPR Offshore GIS team to ensure the content is still current before using the information contained on the map. To the fullest extent permitted by law, we accept no responsibility or liability (whether in contract, tort (including negligence) or otherwise) in respect of any errors or omissions in the information contained in the map and shall not be liable for any loss, damage or expense caused by such errors or omissions.</p>	

# East Anglia TWO

## Construction Phase Dust Distance Boundaries

Drg No	EA1N-EA2-DEV-DRG-IBR-00TBC273	
Rev	2	Coordinate System: BNG Datum: OSGB36
Date	14/11/18	
Figure	19.4	