

East Anglia TWO Offshore Windfarm

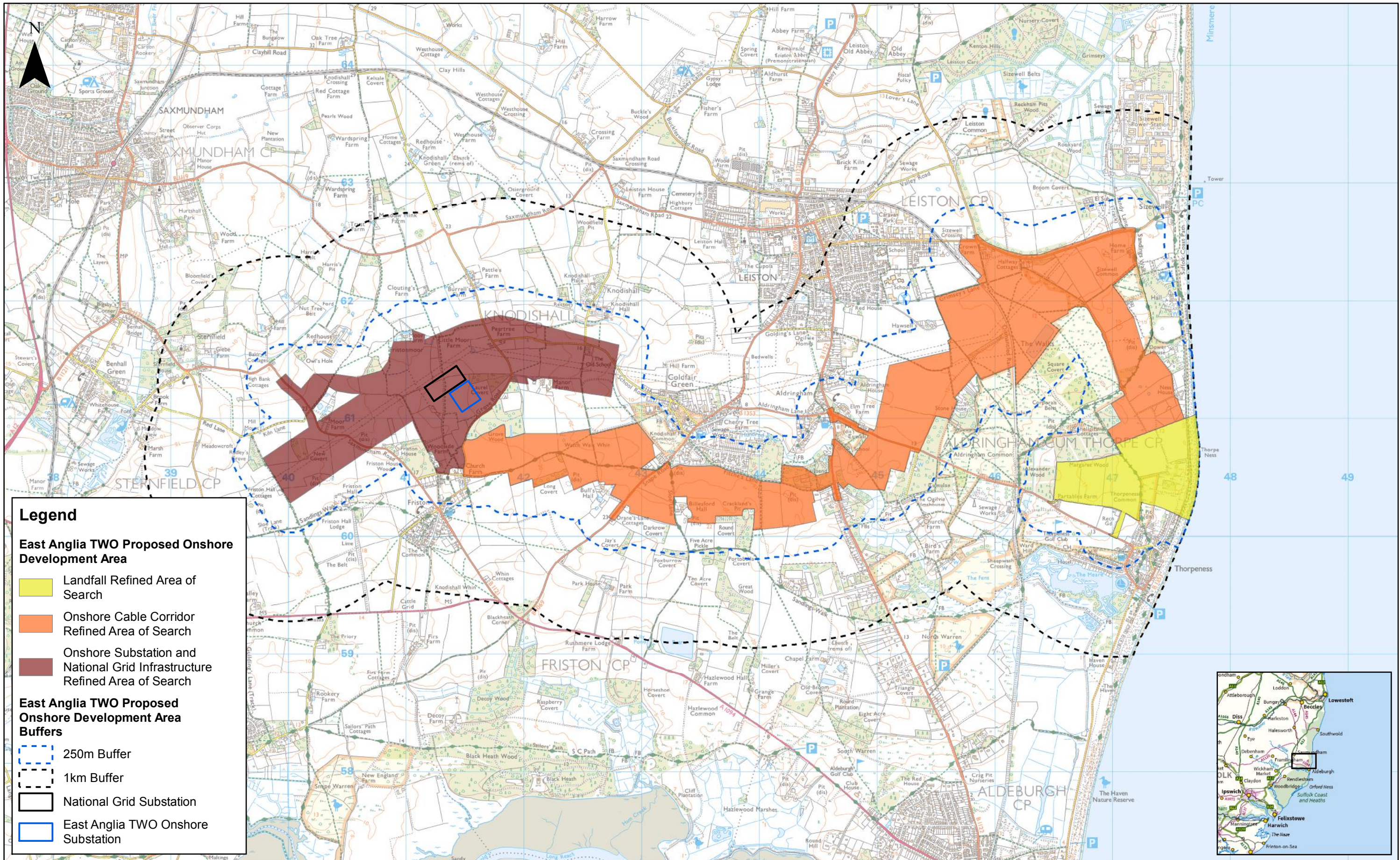
Chapter 18

Ground Conditions and Contamination

Figures

Preliminary Environmental Information
Volume 2

This page is intentionally blank



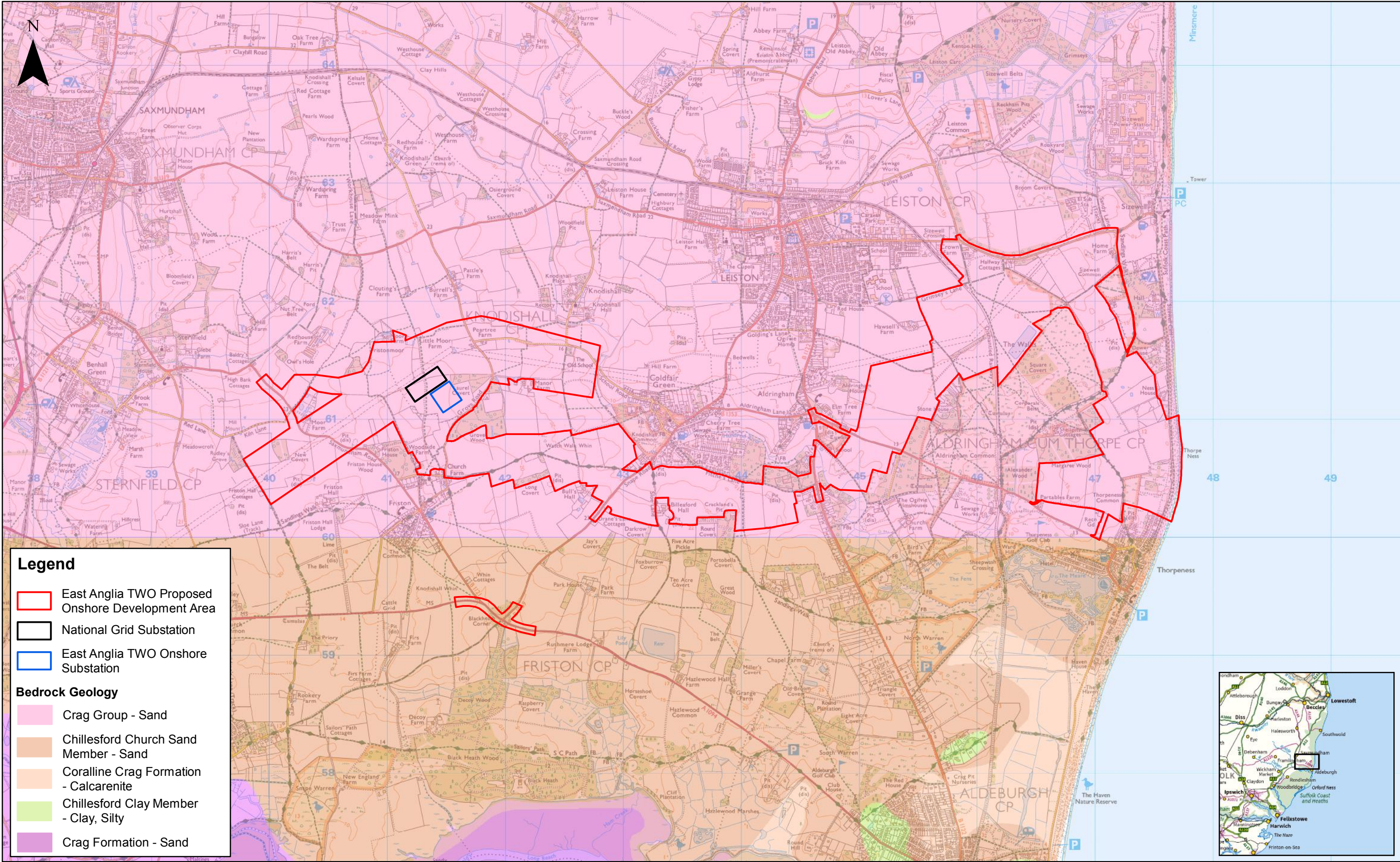
2	12/11/2018	FC	Second Issue.	Prepared:	FC
1	10/08/2018	FC	First Issue.	Checked:	PG
Rev	Date	By	Comment	Approved:	AH



1:30,000	Scale @ A3
0 0.5 1 Km	
Source: © Crown copyright and database rights 2018. Ordnance Survey 0100031673.	
This map has been produced to the latest known information at the time of issue, and has been produced for your information only. Please consult with the SPR Offshore GIS team to ensure the content is still current before using the information contained on this map. To the fullest extent permitted by law, we accept no responsibility or liability (whether in contract, tort (including negligence) or otherwise in respect of any errors or omissions in the information contained in the map and shall not be liable for any loss, damage or expense caused by such errors or omissions.	

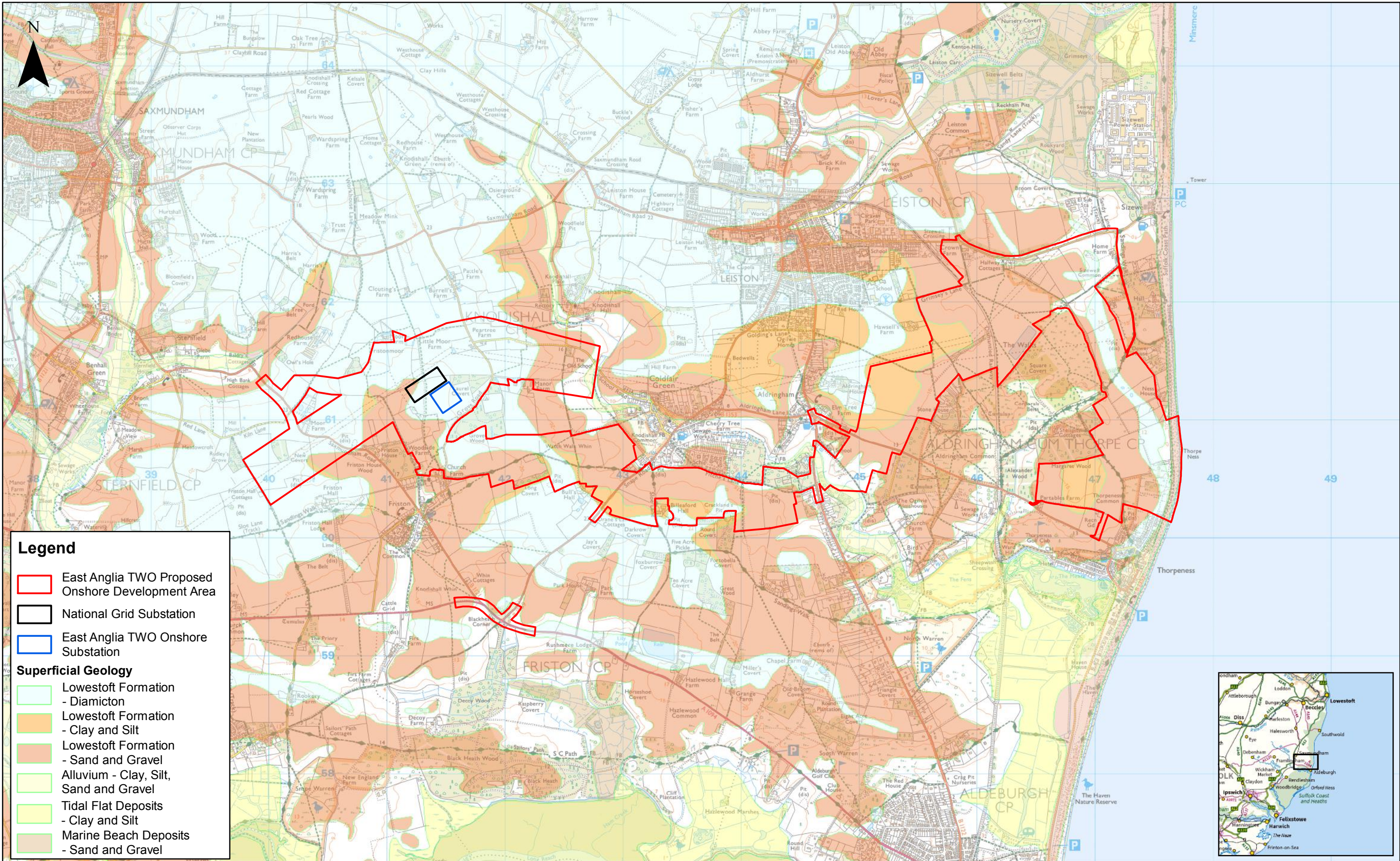
East Anglia TWO


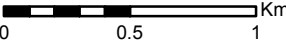
Study Area

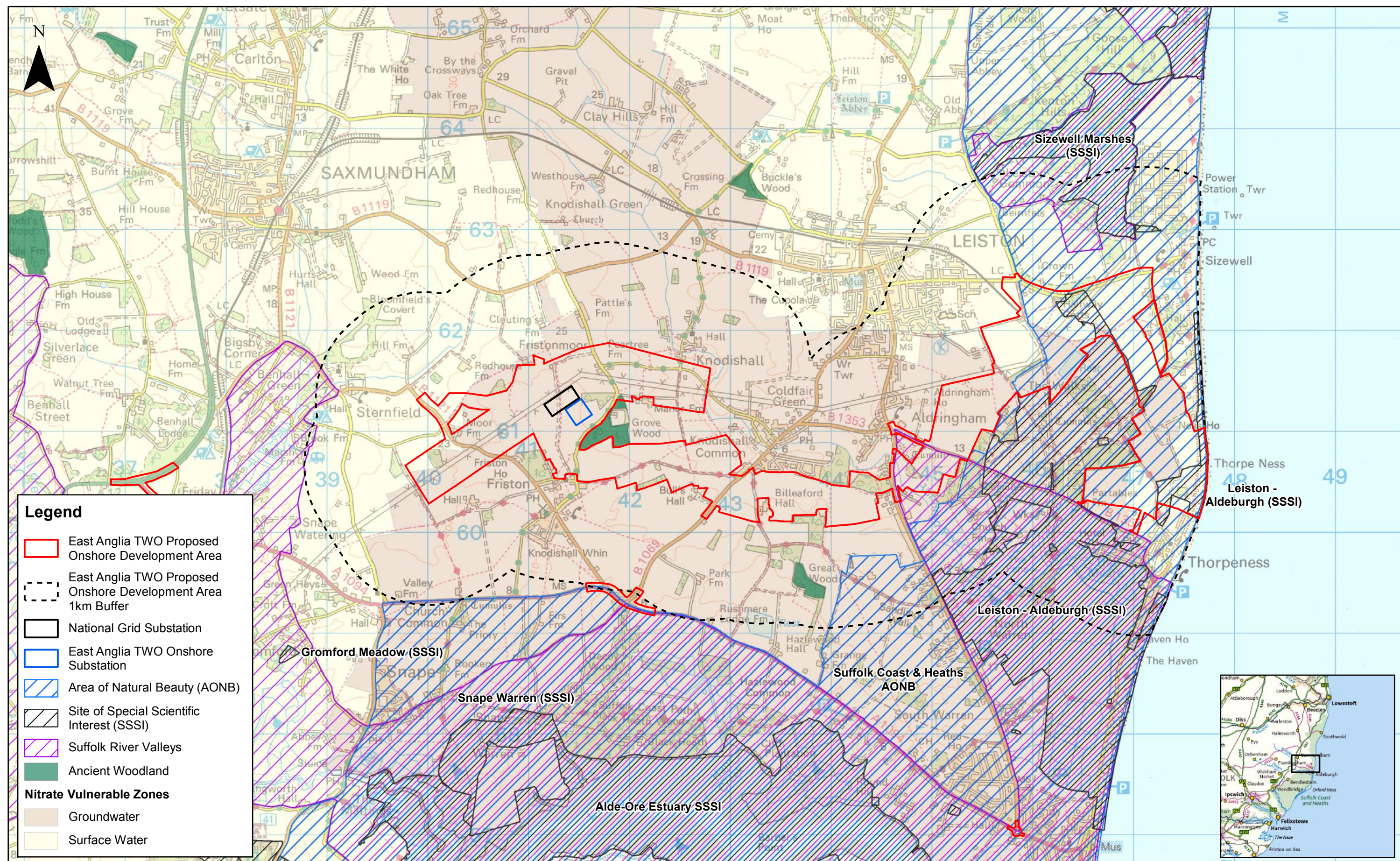
Drg No	EA1N-EA2-DEV-DRG-IBR-00TBC136	Coordinate System: BNG Datum: OSGB36
Rev	2	
Date	12/11/18	
Figure	18.1	



						1:30,000		<h1>East Anglia TWO</h1> <h2>Bedrock Geology</h2>	Drg No	EA1N-EA2-DEV-DRG-IBR-00TBC117		
	2	12/11/2018	FC	Second Issue.	Prepared:	FC			Rev	2	Coordinate System: BNG Datum: OSGB36	
	1	31/07/2018	FC	First Issue.	Checked:	PG	Date		12/11/18			
	Rev	Date	By	Comment	Approved:	AH	Figure		18.2			
	<p>Source: © British Geological Survey, 2018. © Crown copyright and database rights 2018. Ordnance Survey 0100031673.</p> <p>This map has been produced to the latest known information at the time of issue, and has been produced for your information only. Please consult with the SPR Offshore GIS team to ensure the content is still current before using the information contained on this map.</p> <p>To the fullest extent permitted by law, we accept no responsibility or liability (whether in contract, tort (including negligence) or otherwise in respect of any errors or omissions in the information contained in the map and shall not be liable for any loss, damage or expense caused by such errors or omissions.</p>											



 <div>SCOTTISHPOWER RENEWABLES</div>						1:30,000		<h1>East Anglia TWO</h1> <h2>Superficial Geology</h2>	Drg No	EA1N-EA2-DEV-DRG-IBR-00TBC112		
	2	12/11/2018	FC	Second Issue.	Prepared:	FC			Rev	2	Coordinate System: BNG Datum: OSGB36	
	1	31/07/2018	FC	First Issue.	Checked:	PG	Date		12/11/18			
	Rev	Date	By	Comment	Approved:	AH	Figure		18.3			
							<p>Source: © British Geological Survey, 2018. © Crown copyright and database rights 2018. Ordnance Survey 0100031673.</p> <p>This map has been produced to the latest known information at the time of issue, and has been produced for your information only. Please consult with the SPK Offshore GIS team to ensure the content is still current before using the information contained on this map.</p> <p>To the fullest extent permitted by law, we accept no responsibility or liability (whether in contract, tort (including negligence) or otherwise in respect of any errors or omissions in the information contained in the map and shall not be liable for any loss, damage or expense caused by such errors or omissions.</p>					



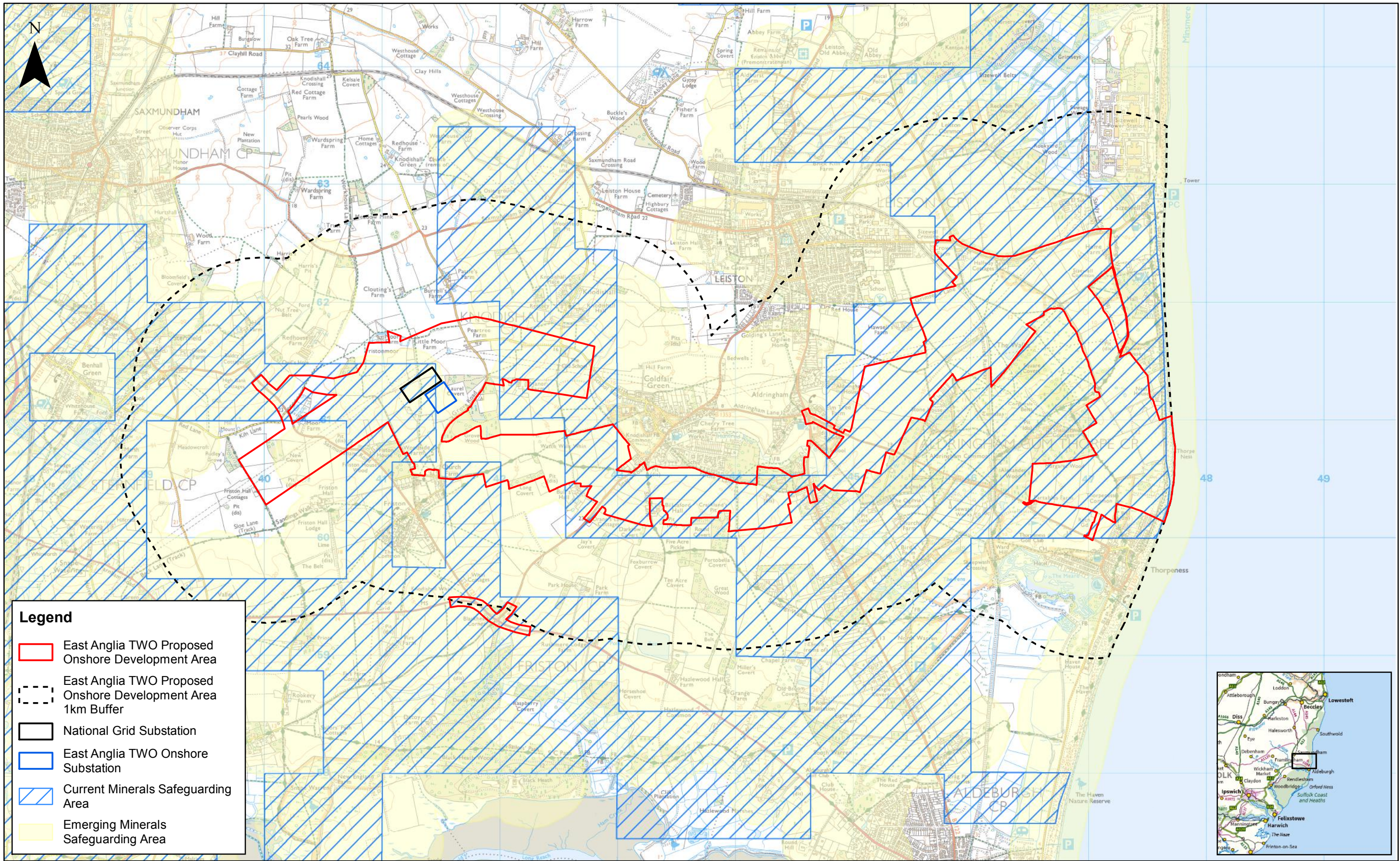
					1:35,000
2	12/11/2018	FC	Second Issue.	Prepared: FC	Scale @ A3
1	15/08/2018	FC	First Issue.	Checked: PG	
Rev	Date	By	Comment	Approved: AH	

Source: © Natural England, 2018. © Crown copyright and database rights 2018. Ordnance Survey 0100031673.
This map has been produced to the latest known information at the time of issue, and has been produced for your information only.
Please consult with the SPR Offshore GIS team to ensure the content is still current before using the information contained on this map.
To the fullest extent permitted by law, we accept no responsibility or liability (whether in contract, tort (including negligence) or otherwise) in respect of any errors or omissions in the information contained in the map and shall not be liable for any loss, damage or expense caused by such errors or omissions.

East Anglia T2O

Sensitive Land Uses

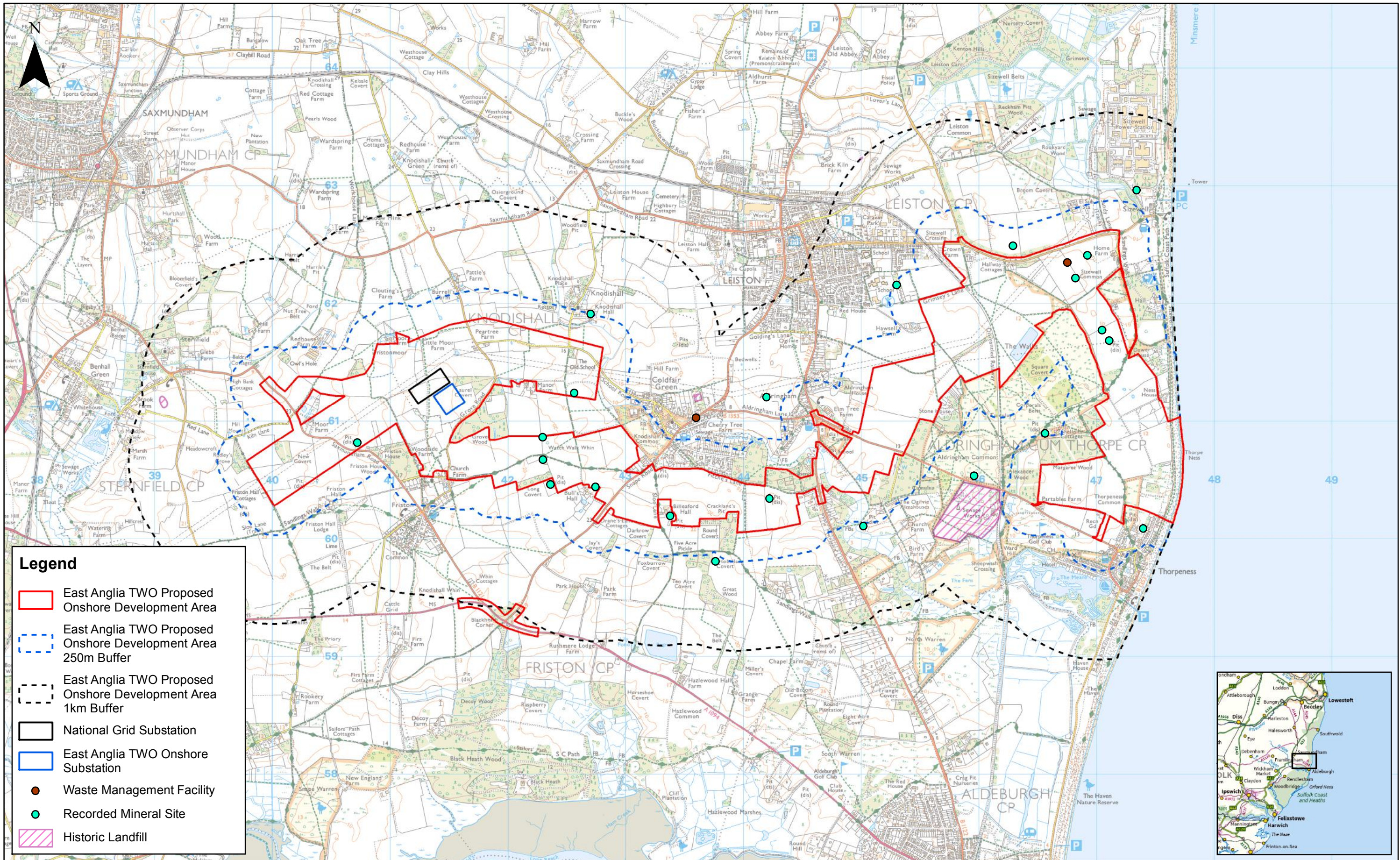
Drg No	EA1N-EA2-DEV-DRG-IBR-00TBC152	
Rev	2	Coordinate System: BNG
Date	12/11/18	Datum: OSGB36
Figure	18.5	



1	12/11/2018	FC	First Issue.
Rev	Date	By	Comment

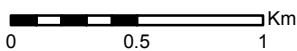
Prepared:	FC	1:30,000	Scale @ A3
Checked:	PG	Source: © Suffolk County Council, 2018. © Crown copyright and database rights 2018. Ordnance Survey 0100031673.	
Approved:	AH	This map has been produced to the latest known information at the time of issue, and has been produced for your information only. Please consult with the SPR Offshore GIS team to ensure the content is still current before using the information contained on this map. To the fullest extent permitted by law, we accept no responsibility or liability (whether in contract, tort (including negligence) or otherwise) in respect of any errors or omissions in the information contained in the map and shall not be liable for any loss, damage or expense caused by such errors or omissions.	

East Anglia T2O		Drg No	EA1N-EA2-DEV-DRG-IBR-00TBC151	
Minerals Safeguarding Area		Rev	1	Coordinate System: BNG Datum: OSGB36
		Date	12/11/18	
		Figure	18.6	



2	12/11/2018	FC	Second Issue.
1	16/08/2018	FC	First Issue.
Rev	Date	By	Comment

1:30,000	Scale @ A3
Prepared:	FC
Checked:	PG
Approved:	AH



East Anglia TWO

Potential Contamination Sources

Drg No	EA1N-EA2-DEV-DRG-IBR-00TBC158
Rev	2
Date	12/11/18
Figure	18.7
Coordinate System:	BNG
Datum:	OSGB36

This page is intentionally blank