

East Anglia TWO Offshore Windfarm

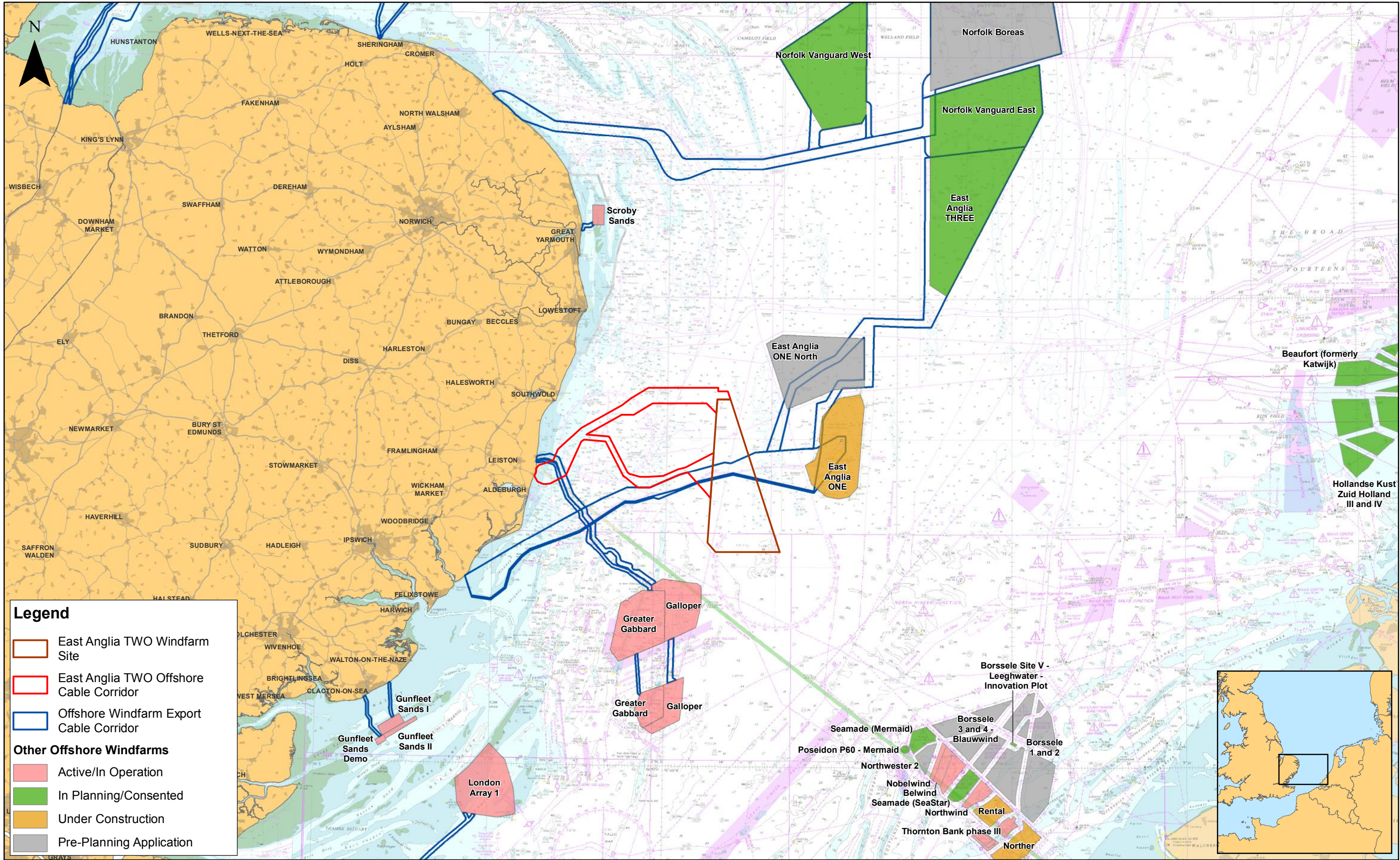
Chapter 17

Infrastructure and Other Users


Figures

Preliminary Environmental Information
Volume 2

This page is intentionally blank



2	16/11/2018	FC	Second Issue.	Prepared:	FC
1	23/07/2018	BH	First Issue.	Checked:	BK
Rev	Date	By	Comment	Approved:	PP

1:700,000	
Scale @ A3	

Source: © 4C Offshore, 2018. © The Crown Estate, 2017. Charts from MarineFIND.co.uk Licence No EK001-0645-MF0095. Not to be used for navigation.

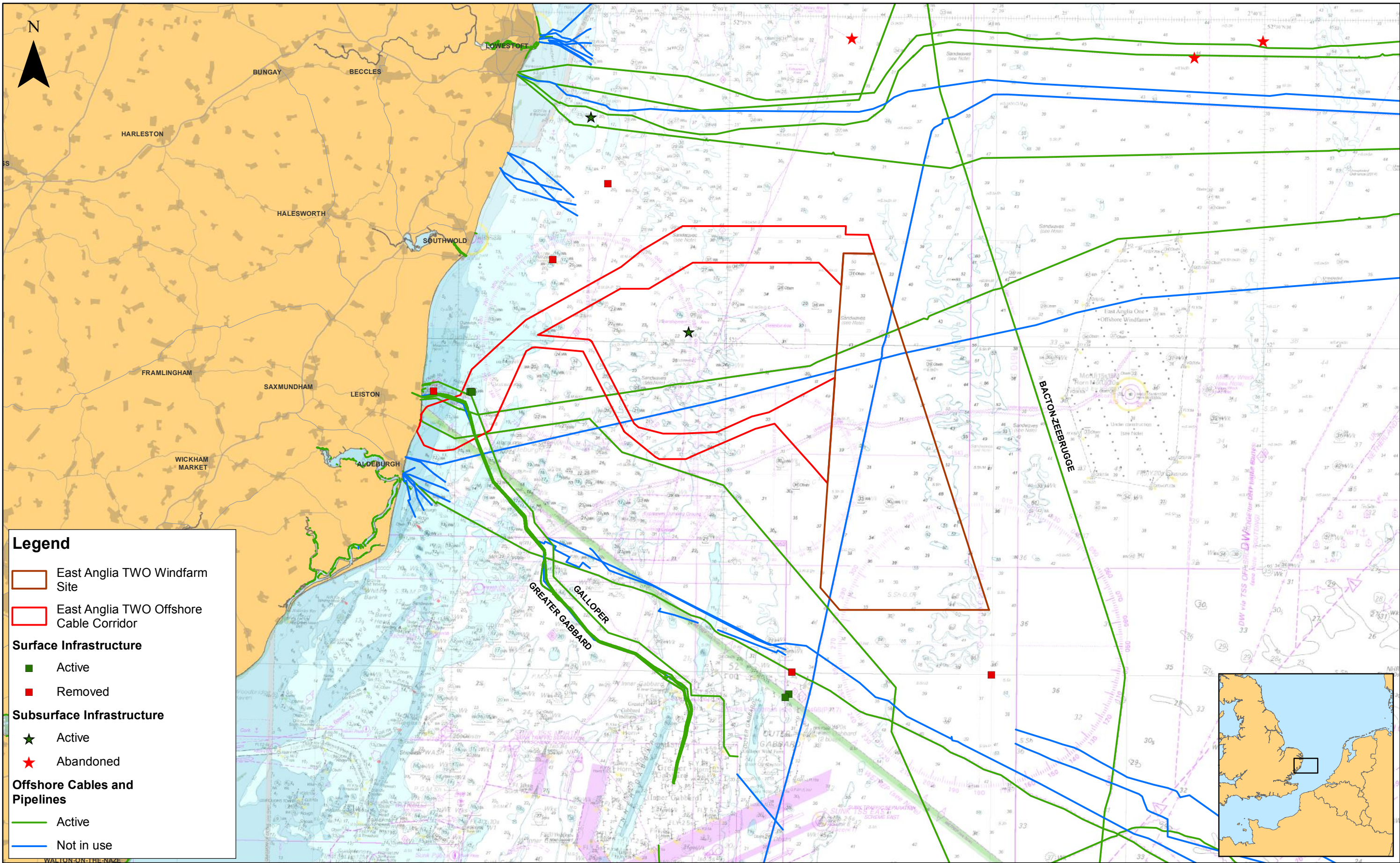
This map has been produced to the latest known information at the time of issue, and has been produced for your information only. Please consult with the SPR Offshore GIS team to ensure the content is still current before using the information contained on this map.


To the fullest extent permitted by law, we accept no responsibility or liability (whether in contract, tort (including negligence) or otherwise in respect of any errors or omissions in the information contained in the map and shall not be liable for any loss, damage or expense caused by such errors or omissions).

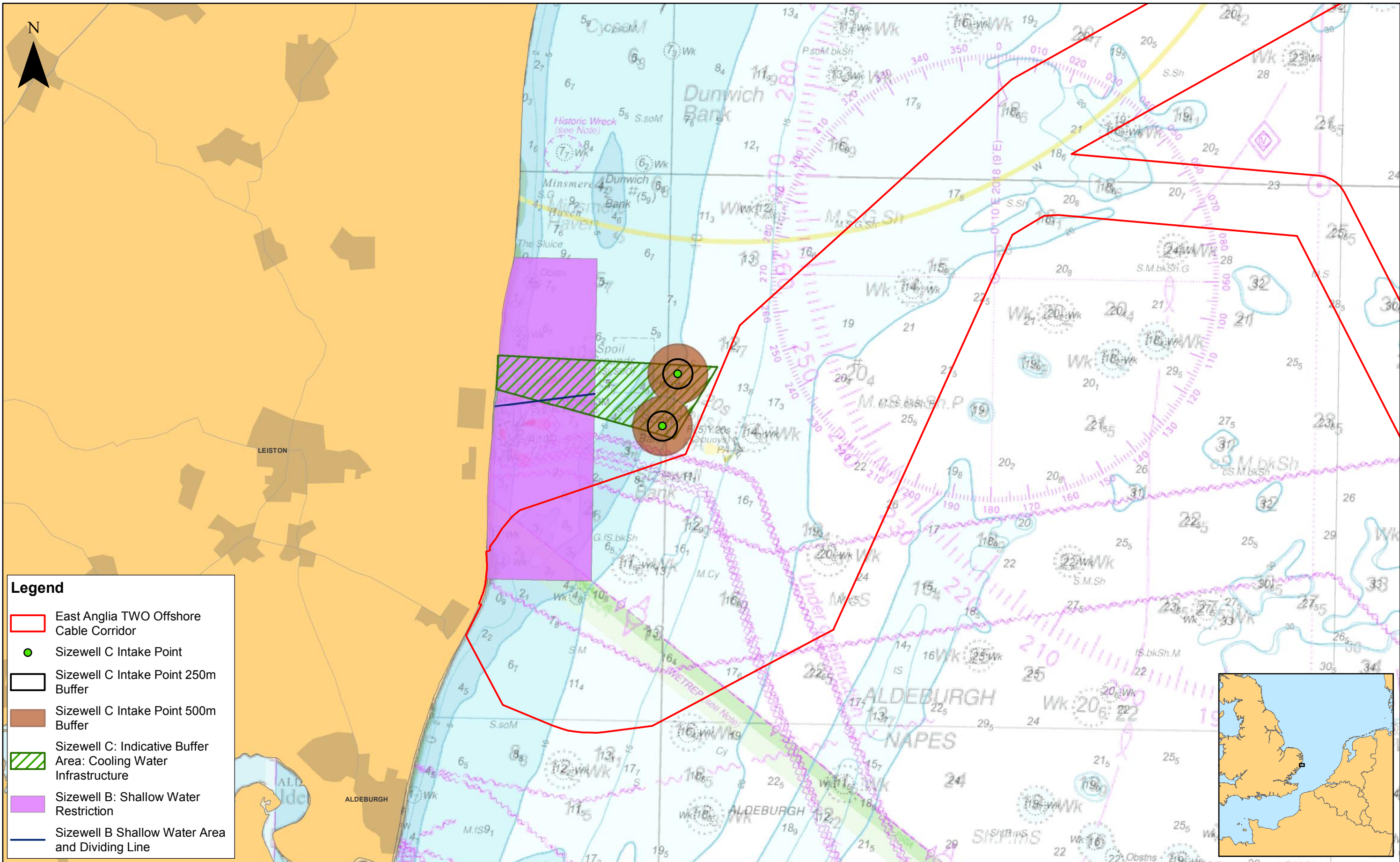
East Anglia TWO

Offshore Windfarm Developments

Drg No	EA1N-EA2-DEV-DRG-IBR-00TBC102	
Rev	2	Datum: WGS 1984
Date	16/11/18	Projection: Zone 31N
Figure	17.1	



				1:300,000 Scale @ A3		0 2.5 5 10 Km		East Anglia TWO Other Offshore Infrastructure		Drg No	EA1N-EA2-DEV-DRG-IBR-00TBC103	
2	16/11/2018	FC	Second Issue.	Prepared:	FC	<small>Source: © The Crown Estate, 2017. © Oil & Gas UK Ltd, 2018. Data provided by MarineFind, 2017. Charts from MarineFIND.co.uk © Licence No EX001-0645-MF008. Not to be used for navigation. This map has been produced to the latest known information at the time of issue, and has been produced for your information only. Please consult with the SPR Offshore GIS team to ensure the information contained on this map. To the fullest extent permitted by law, we accept no responsibility or liability (whether in contract, tort (including negligence) or otherwise in respect of any errors or omissions in the information contained in the map and shall not be liable for any loss, damage or expense caused by such errors or omissions.</small>				Rev	2	Datum: WGS 1984 Projection: Zone 31N
1	23/07/2018	BH	First Issue.	Checked:	BK					Date	16/11/18	
Rev	Date	By	Comment	Approved:	PP					Figure	17.2	



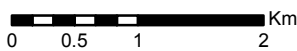
Legend

- East Anglia TWO Offshore Cable Corridor
- Sizewell C Intake Point
- Sizewell C Intake Point 250m Buffer
- Sizewell C Intake Point 500m Buffer
- Sizewell C: Indicative Buffer Area: Cooling Water Infrastructure
- Sizewell B: Shallow Water Restriction
- Sizewell B Shallow Water Area and Dividing Line



2	16/11/2018	AB	Second Issue.
1	23/08/2018	BH	First Issue.
Rev	Date	By	Comment

1:60,000	Scale @ A3
2	16/11/2018
AB	Second Issue.
Prepared:	AB
Checked:	BK
Approved:	PP

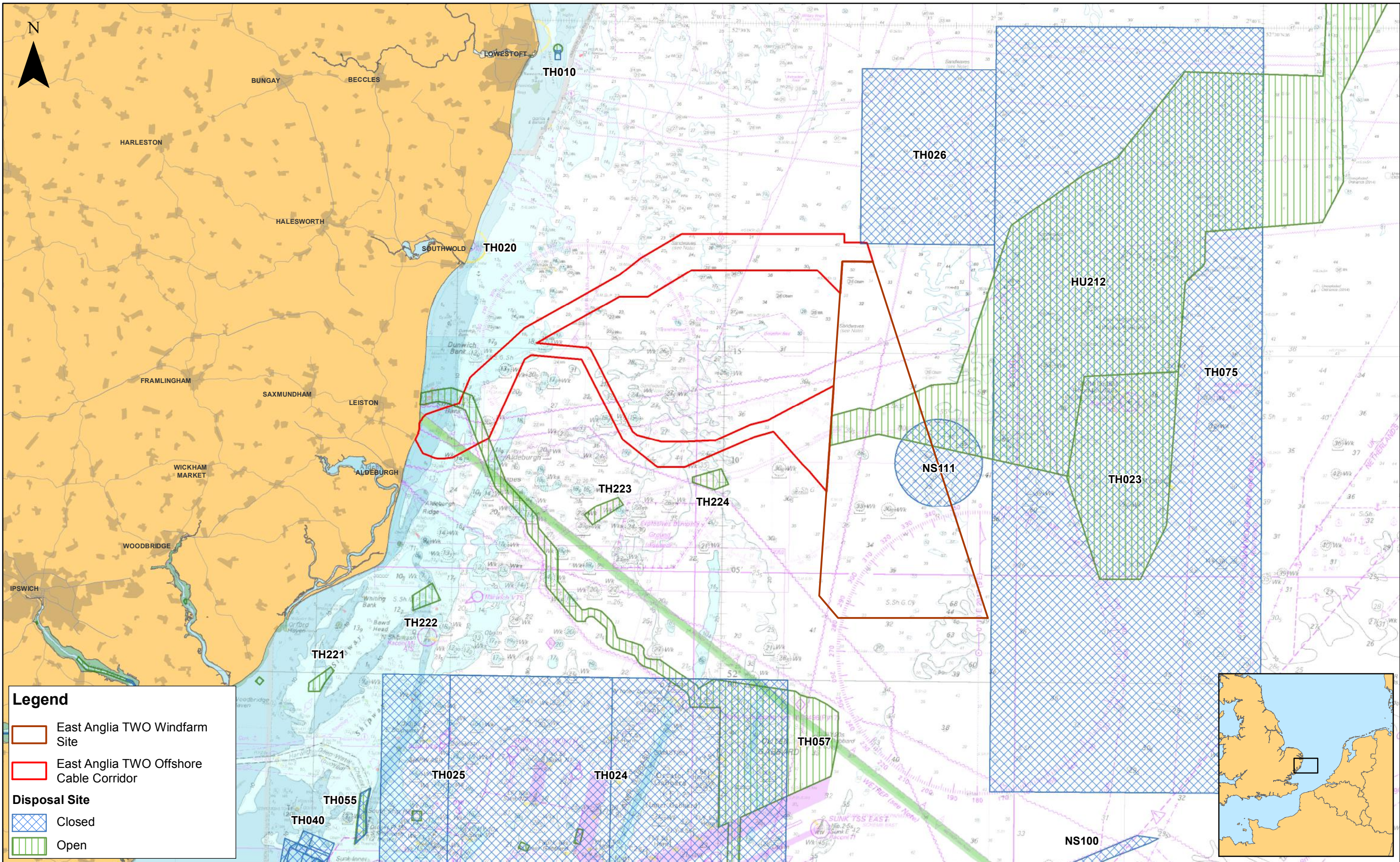


East Anglia TWO

EDF Offshore Infrastructure and Management Areas

Drg No	EA1N-EA2-DEV-DRG-IBR-00TBC104
Rev	2
Date	16/11/18
Figure	17.3

Datum:
WGS 1984
Projection:
Zone 31N



Legend


- East Anglia TWO Windfarm Site
- East Anglia TWO Offshore Cable Corridor

Disposal Site

- Closed
- Open



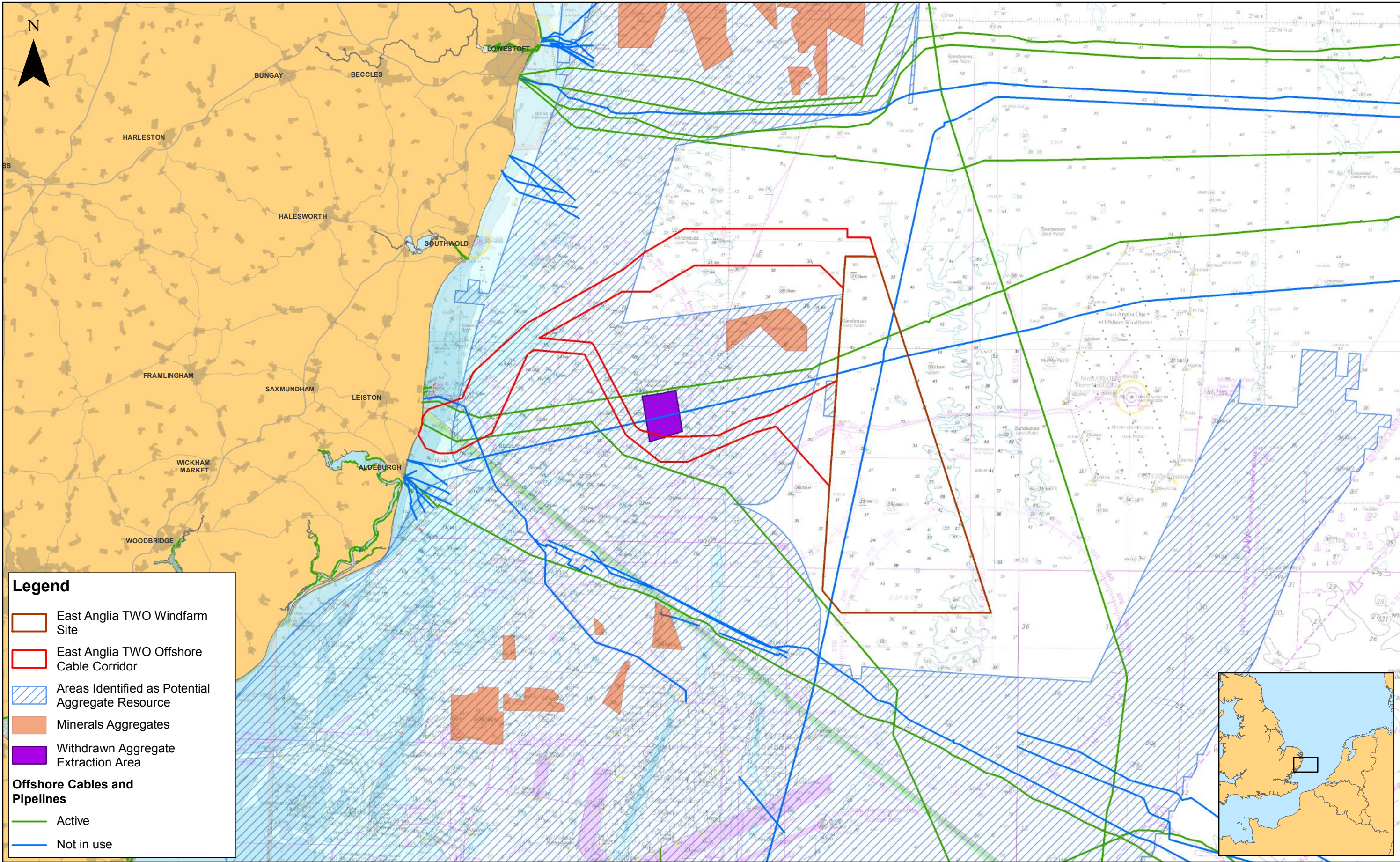
2	16/11/2018	FC	Second Issue.
1	23/08/2018	BH	First Issue.
Rev	Date	By	Comment

		1:300,000	
			
Prepared:	FC	Scale @ A3	
Checked:	BK	Source: © The Crown Estate, 2017. © Cefas, 2017. Charts from MarineFIND.co.uk © Licence No EK001-0645-MF0095. Not to be used for navigation.	
Approved:	PP	<p>This map has been produced to the latest known information at the time of issue, and has been produced for your information only. Please consult with the SPR Offshore GIS team to ensure the content is still current before using the information contained on this map. To the fullest extent permitted by law, we accept no responsibility or liability (whether in contract, tort (including negligence) or otherwise) in respect of any errors or omissions in the information contained in the map and shall not be liable for any loss, damage or expense caused by such errors or omissions.</p>	

East Anglia TWO

Marine Disposal Activity

Drg No	EA1N-EA2-DEV-DRG-IBR-00TBC105		
Rev	2	Datum: WGS 1984	
Date	16/11/18	Projection: Zone 31N	
Figure	17.4		



				1:300,000 Scale @ A3		East Anglia TWO Aggregates: Licenced Areas and Potential Resource		Drg No	EA1N-EA2-DEV-DRG-IBR-00TBC106	
2	16/11/2018	AB	Second Issue.	Prepared:	AB	<small>Source: © The Crown Estate, 2017. © Cefas, 2017. © Oil & Gas UK Ltd, 2018. Charts from MarineFND.co.uk © Licence No EX001-0845-MP008. Not to be used for navigation. This map has been produced to the latest known information at the time of issue, and has been produced for your information only. Please consult with the SPR Offshore GIS team to ensure the information contained on this map. To the fullest extent permitted by law, we accept no responsibility or liability (whether in contract, tort (including negligence) or otherwise in respect of any errors or omissions in the information contained in the map and shall not be liable for any loss, damage or expense caused by such errors or omissions.</small>		Rev	2	Datum: WGS 1984 Projection: Zone 31N
1	23/08/2018	BH	First Issue.	Checked:	BK			Date	16/11/18	
Rev	Date	By	Comment	Approved:	PP			Figure	17.5	

This page is intentionally blank