



**SCOTTISHPOWER  
RENEWABLES**

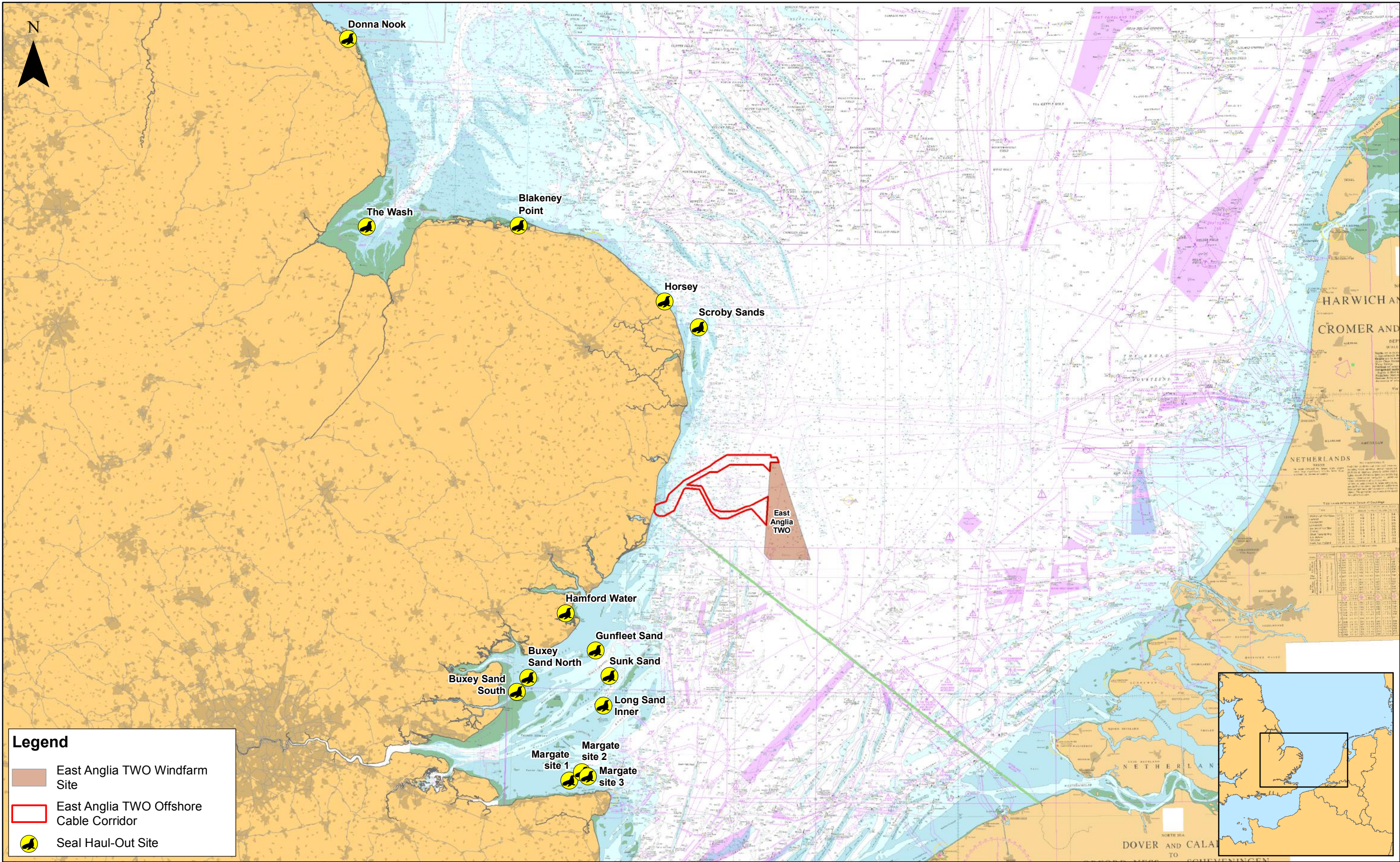
# **East Anglia TWO Offshore Windfarm**

## **Chapter 11** **Marine Mammals**

### **Figures**

Preliminary Environmental Information  
Volume 2

**This page is intentionally blank**



Legend

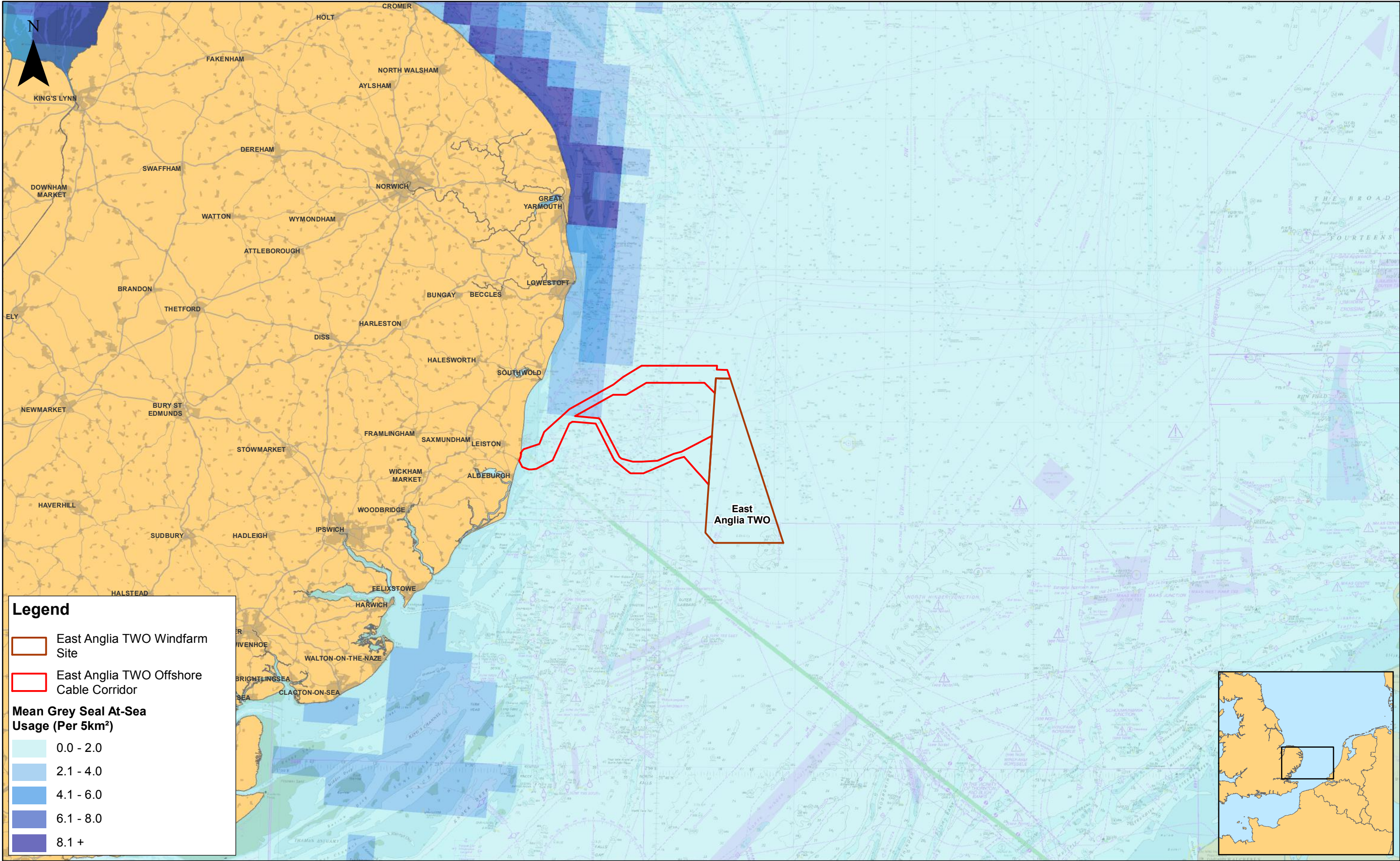
East Anglia TWO Windfarm Site



East Anglia TWO Offshore Cable Corridor

Seal Haul-Out Site

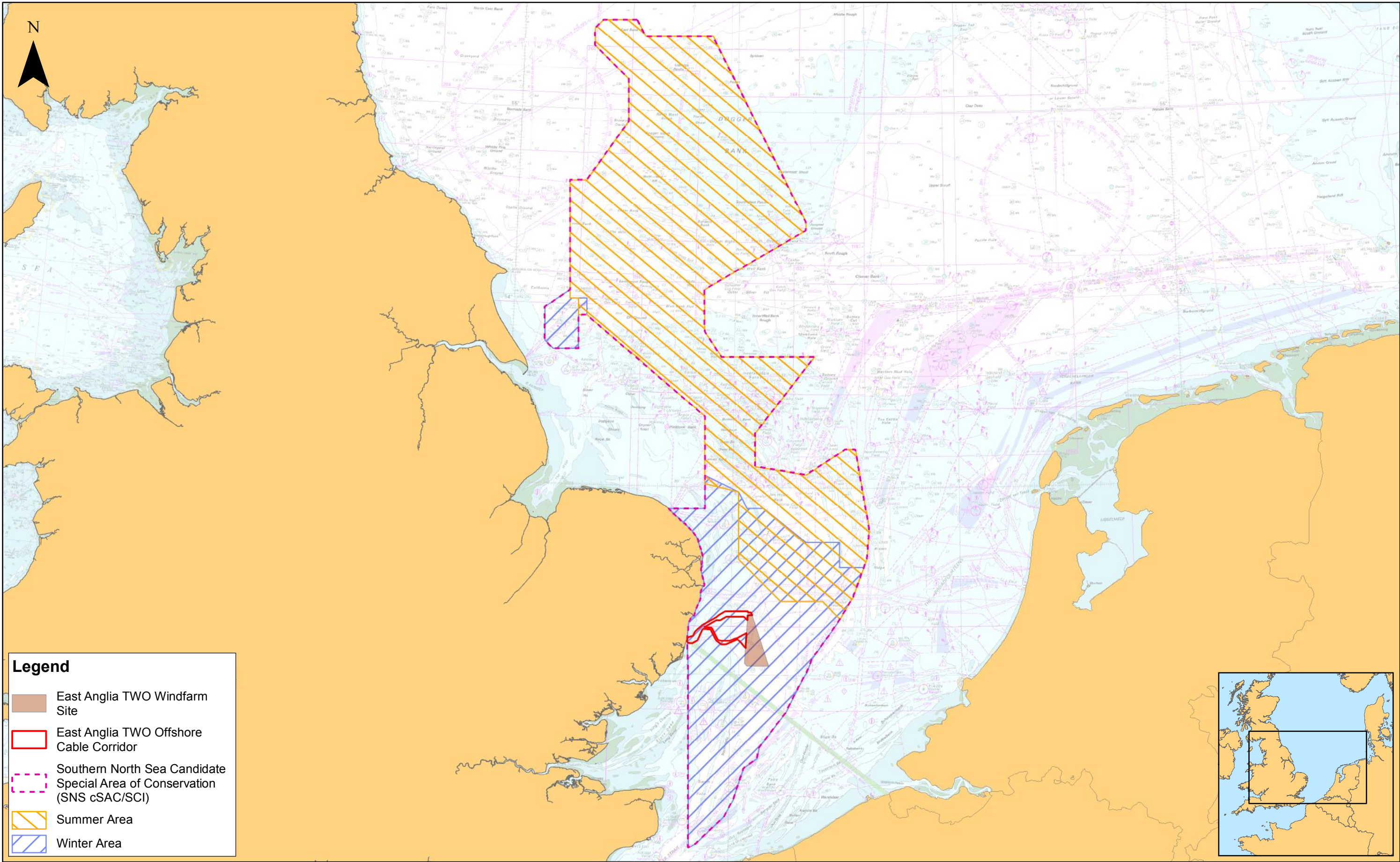
<div><div><div></div><div>SCOTTISHPOWER RENEWABLES</div></div></div>				1:1,100,000 Scale @ A3		0 12.5 25 50 Km		<div>East Anglia TWO</div> <div>Grey and Harbour Seal Haul-Out Sites</div>		<div>Drg No</div> <div>EA1N-EA2-DEV-DRG-IBR-00TBC140</div>	
				Prepared:	FC	Source: © SMRU, 2018. © The Crown Estate, 2017. Charts from MarineFIND.co.uk Licence No EK001-0645-MF0095. Not to be used for navigation. This map has been produced to the latest known information at the time of issue, and has been produced for your information only. Please consult with the SPR Offshore GIS team to ensure the content is still current before using the information contained on this map. To the fullest extent permitted by law, we accept no responsibility or liability (whether in contract, tort (including negligence) or otherwise) in respect of any errors or omissions in the information contained in the map and shall not be liable for any loss, damage or expense caused by such errors or omissions.		Rev		Datum: WGS 1984 Projection: Zone 31N	
1	23/08/2018	FC	First Issue.	Checked:	JL			Date	23/08/18		
Rev	Date	By	Comment	Approved:	PP			Figure	11.1		

D:\Box Sync\PB4842 EA 1N and 2\PB4842 EA 1N and 2 Team\E. TECHNICAL DATA\E03 GIS\EA2\Figures\PEIR\Chapter\_11\_MarineMammal\Fig\_11\_1\_EA2\_HaulOutSites\_20180823.mxd



							1:650,000		<h1>East Anglia TWO</h1> <h2>Mean Grey Seal At-Sea Usage</h2>	<b>Drg No</b>	EA1N-EA2-DEV-DRG-IBR-00TBC138	
					Prepared:	FC	Scale @ A3			<b>Rev</b>	1	Datum: WGS 1984 Projection: Zone 31N
	1	08/08/2018	FC	First Issue.	Checked:	JL	Source: © SMRU and Marine Scotland, 2017. © The Crown Estate, 2017. Charts from MarineFIND.co.uk Licence No EK001-0645-MF0095. Not to be used for navigation.  This map has been produced to the latest known information at the time of issue, and has been produced for your information only. Please consult with the SPR Offshore GIS team to ensure the content is still current before using the information contained on this map. To the fullest extent permitted by law, we accept no responsibility or liability (whether in contract, tort (including negligence) or otherwise in respect of any errors or omissions in the information contained in the map and shall not be liable for any loss, damage or expense caused by such errors or omissions.			<b>Date</b>	08/08/18	
	Rev	Date	By	Comment	Approved:	PP				<b>Figure</b>	11.2	





Legend

East Anglia TWO Windfarm Site

East Anglia TWO Offshore Cable Corridor

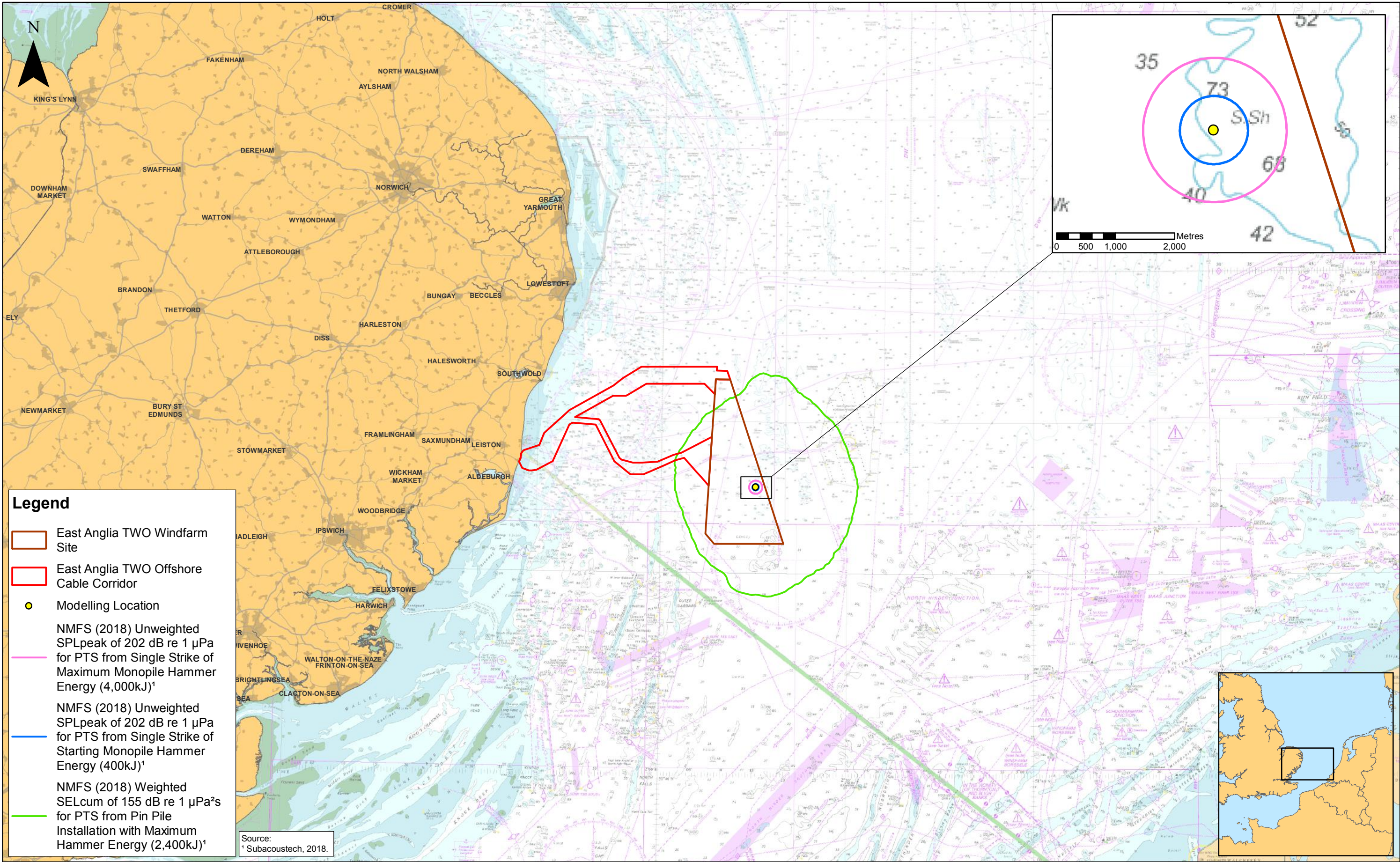
Southern North Sea Candidate Special Area of Conservation (SNS cSAC/SCI)



Summer Area

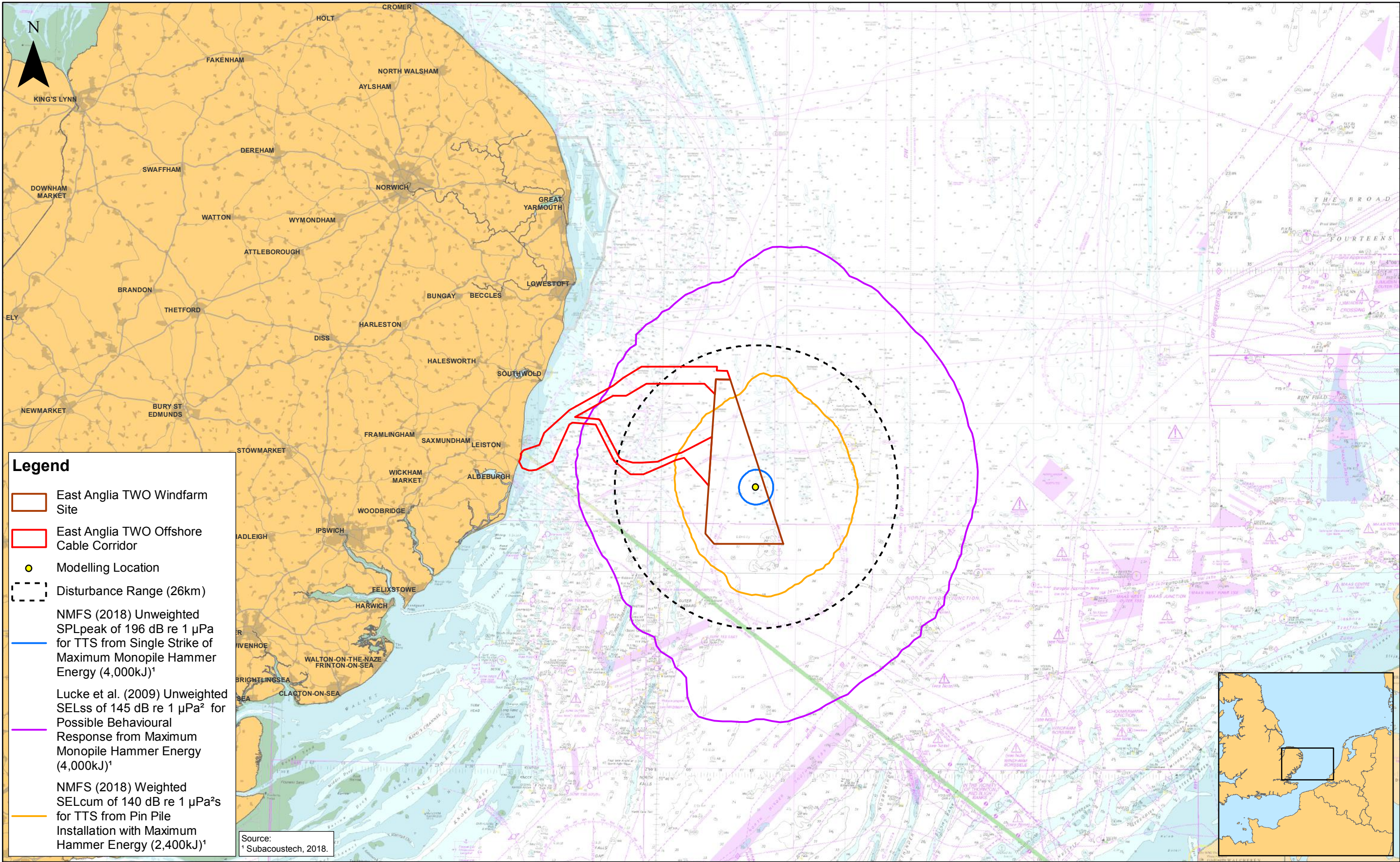
Winter Area



<div><div><div></div><div>SCOTTISHPOWER RENEWABLES</div></div></div>				1:2,100,000		0 25 50 100 Km	<div>East Anglia TWO</div> <div>Southern North Sea cSAC/SCI for Harbour Porpoise</div>		Drg No EA1N-EA2-DEV-DRG-IBR-00TBC131			
				Prepared:	FC				Rev 1	Datum: WGS 1984 Projection: Zone 31N		
1 23/08/2018 FC First Issue.				Checked:	JL	<small>Source: © JNCC, 2018. © The Crown Estate, 2017. Charts from MarineFIND.co.uk Licence No EK001-0645-MF0095. Not to be used for navigation. This map has been produced to the latest known information at the time of issue, and has been produced for your information only. Please consult with the SPR Offshore GIS team to ensure the content is still current before using the information contained on this map. To the fullest extent permitted by law, we accept no responsibility or liability (whether in contract, tort (including negligence) or otherwise in respect of any errors or omissions in the information contained in the map and shall not be liable for any loss, damage or expense caused by such errors or omissions.</small>			Date 23/08/18			
Rev	Date	By	Comment	Approved:	PP				Figure 11.4			

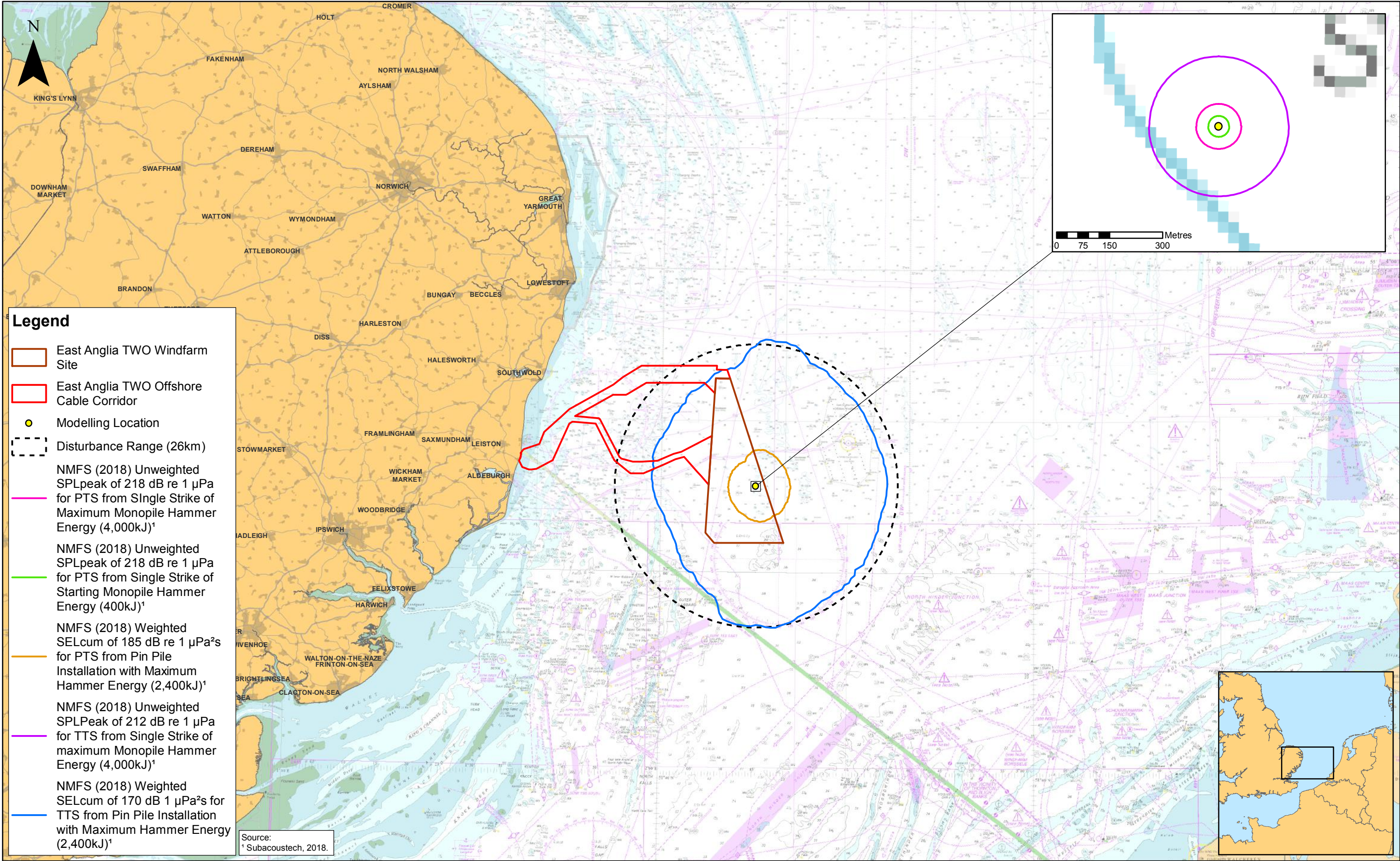
D:\Box Sync\PB4842 EA 1N and 2\PB4842 EA 1N and 2 Team\E. TECHNICAL DATA\E03 GIS\EA2\Figures\PEIR\Chapter\_11\_MarineMammal\Fig\_11\_4\_EA2\_cSACForHarbourPorpoise\_20180823.mxd



						1:650,000 Scale @ A3		<h1>East Anglia TWO</h1> <h2>Harbour Porpoise PTS Ranges Based on Worst-Case Scenarios</h2>	<b>Drg No</b>	EA1N-EA2-DEV-DRG-IBR-00TBC141	
				Prepared:	FC				<b>Rev</b>	1	Datum: WGS 1984 Projection: Zone 31N
	1	21/11/2018	FC	First Issue.	Checked:	GS	<small>Source: © Subacoustech, 2018. © The Crown Estate, 2017. Charts from MarineFIND.co.uk Licence No EK001-0645-MF0095. Not to be used for navigation.</small>		<b>Date</b>	21/11/18	
	<b>Rev</b>	<b>Date</b>	<b>By</b>	<b>Comment</b>	<b>Approved:</b>	PP	<small>This map has been produced to the latest known information at the time of issue, and has been produced for your information only. Please consult with the SPR Offshore GIS team to ensure the content is still current before using the information contained on this map. To the fullest extent permitted by law, we accept no responsibility or liability (whether in contract, tort (including negligence) or otherwise in respect of any errors or omissions in the information contained in the map and shall not be liable for any loss, damage or expense caused by such errors or omissions.</small>		<b>Figure</b>	11.5	



							1:650,000 Scale @ A3		<h1>East Anglia TWO</h1> <h2>Harbour Porpoise TTS Ranges Based on Worst-Case Scenarios</h2>	<b>Drg No</b>	EA1N-EA2-DEV-DRG-IBR-00TBC142	
					Prepared:	FC				<b>Rev</b>	1	Datum: WGS 1984 Projection: Zone 31N
	1	21/11/2018	FC	First Issue.	Checked:	GS	<small>Source: © Subacoustech, 2018. © The Crown Estate, 2018. Charts from MarineFIND.co.uk Licence No EK001-0645-MF0095. Not to be used for navigation.</small>			<b>Date</b>	21/11/18	
					Approved:	PP	<small>This map has been produced to the latest known information at the time of issue, and has been produced for your information only. Please consult with the SPR Offshore GIS team to ensure the content is still current before using the information contained on this map. To the fullest extent permitted by law, we accept no responsibility or liability (whether in contract, tort (including negligence) or otherwise in respect of any errors or omissions in the information contained in the map and shall not be liable for any loss, damage or expense caused by such errors or omissions.</small>			<b>Figure</b>	11.6	
	<b>Rev</b>	<b>Date</b>	<b>By</b>	<b>Comment</b>								



1	21/11/2018	FC	First Issue.
Rev	Date	By	Comment

Prepared:	FC
Checked:	GS
Approved:	PP

1:650,000

Scale @ A3

0

5

10

20

Km

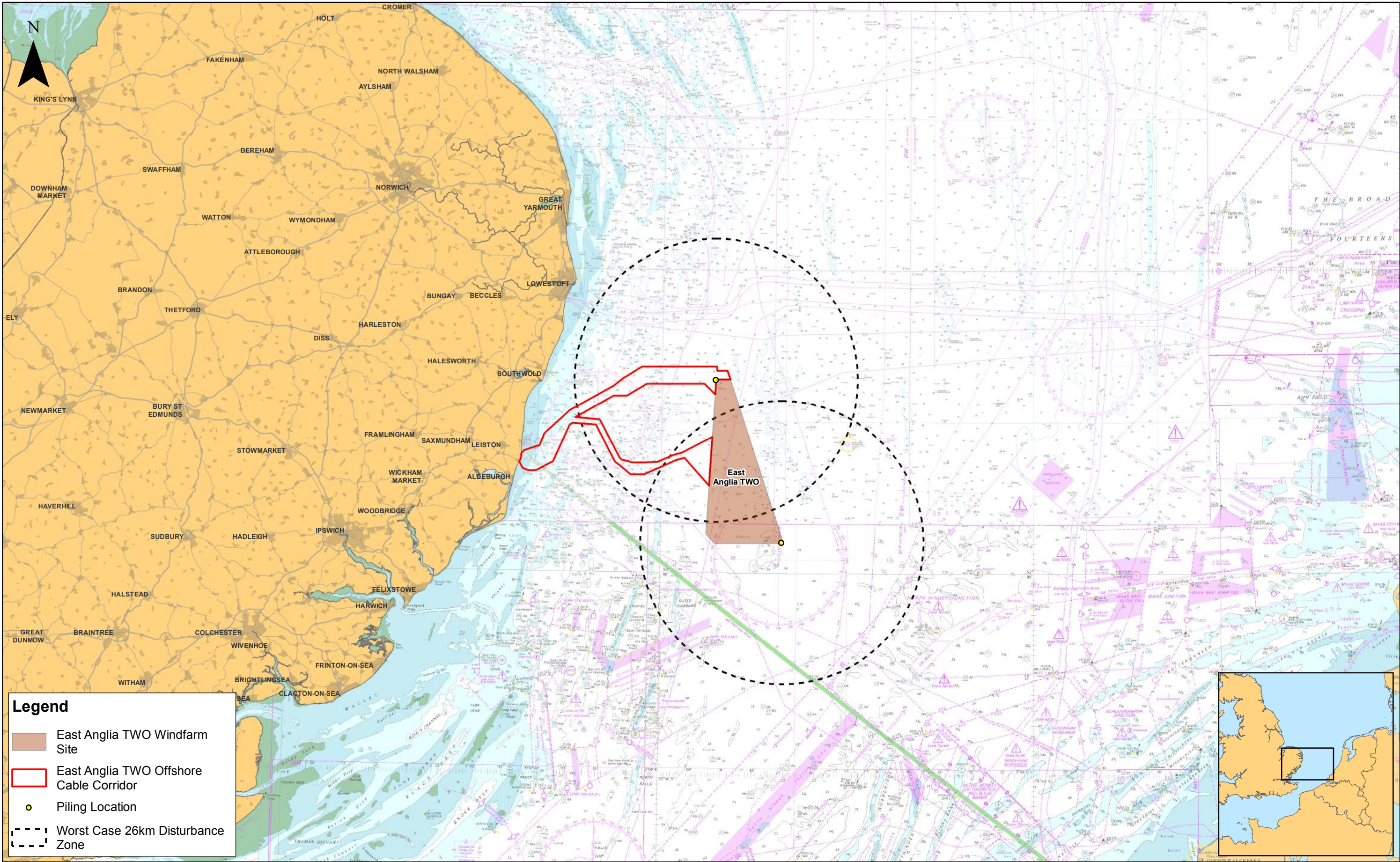
Source: © Subacoustech, 2018. © The Crown Estate, 2018. Charts from MarineFIND.co.uk Licence No EK001-0645-MF0095. Not to be used for navigation.


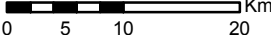
This map has been produced to the latest known information at the time of issue, and has been produced for your information only. Please consult with the SPR Offshore GIS team to ensure the content is still current before using the information contained on this map. To the fullest extent permitted by law, we accept no responsibility or liability (whether in contract, tort (including negligence) or otherwise in respect of any errors or omissions in the information contained in the map and shall not be liable for any loss, damage or expense caused by such errors or omissions.

# East Anglia TWO

## Seal PTS and TTS Ranges Based on Worst-Case Scenarios

Drg No	EA1N-EA2-DEV-DRG-IBR-00TBC143	
Rev	1	Datum: WGS 1984 Projection: Zone 31N
Date	21/11/18	
Figure	11.7	



				1:650,000 Scale @ A3				<b>East Anglia TWO</b> Concurrent Piling Locations		<b>Drg No</b>	EA1N-EA2-DEV-DRG-IBR-00TBC144	
				Prepared:	FC	Source: © The Crown Estate, 2017. Charts from MarineFIND.co.uk Licence No EK001-0645-MF0095. Not to be used for navigation.				<b>Rev</b>	1	Datum: WGS 1984 Projection: Zone 31N
1 08/08/2018 FC First Issue.				Checked:	JL	This map has been produced to the latest known information at the time of issue, and has been produced for your information only. Please consult with the SPR Offshore GIS team to ensure the content is still current before using the information contained on this map. To the fullest extent permitted by law, we accept no responsibility or liability (whether in contract, tort (including negligence) or otherwise) in respect of any errors or omissions in the information contained in the map and shall not be liable for any loss, damage or expense caused by such errors or omissions.				<b>Date</b>	08/08/18	
<b>Rev</b>	<b>Date</b>	<b>By</b>	<b>Comment</b>	Approved:	PP					<b>Figure</b>	11.8	