



**SCOTTISHPOWER
RENEWABLES**

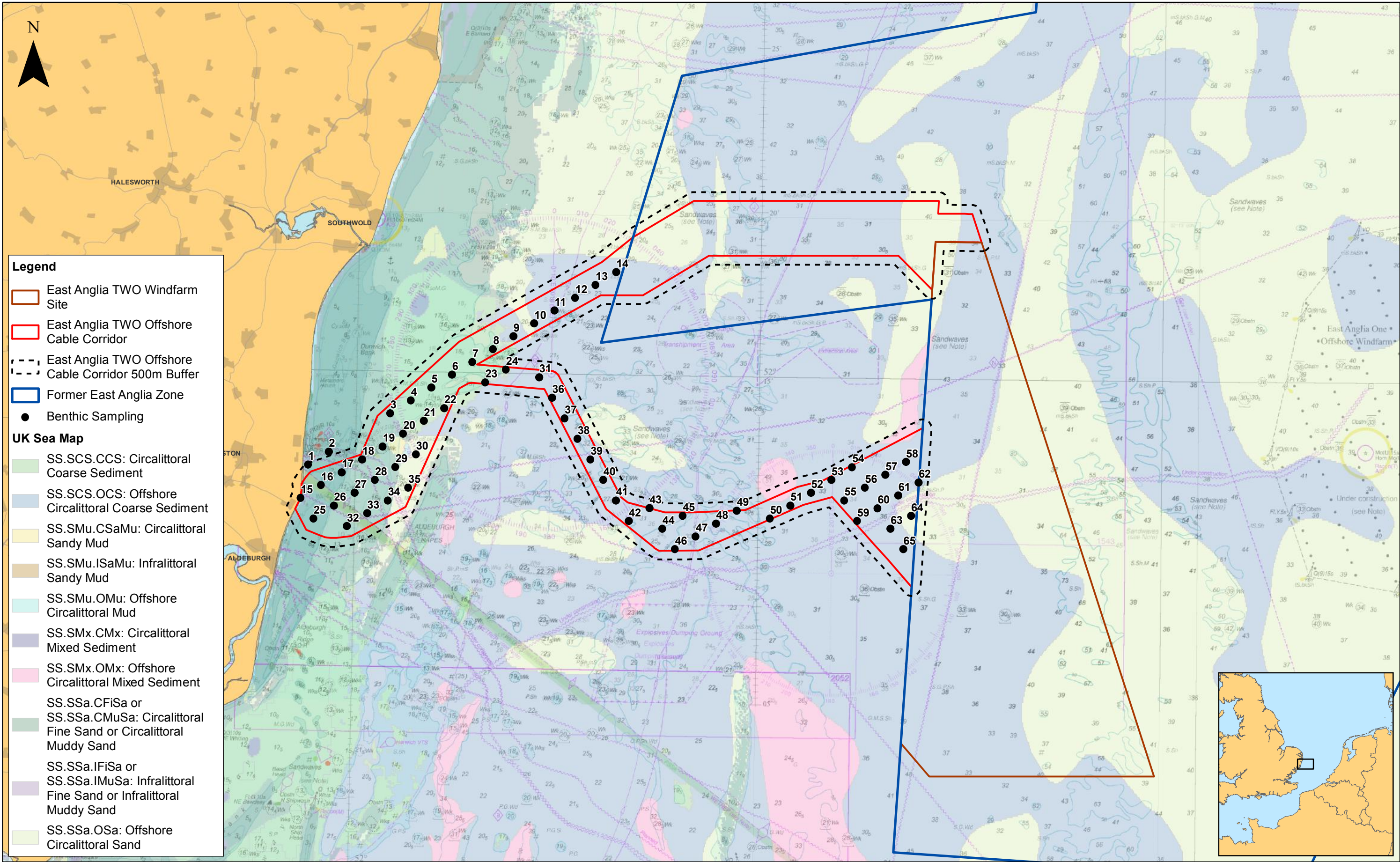
East Anglia TWO Offshore Windfarm


Chapter 9 Benthic Ecology

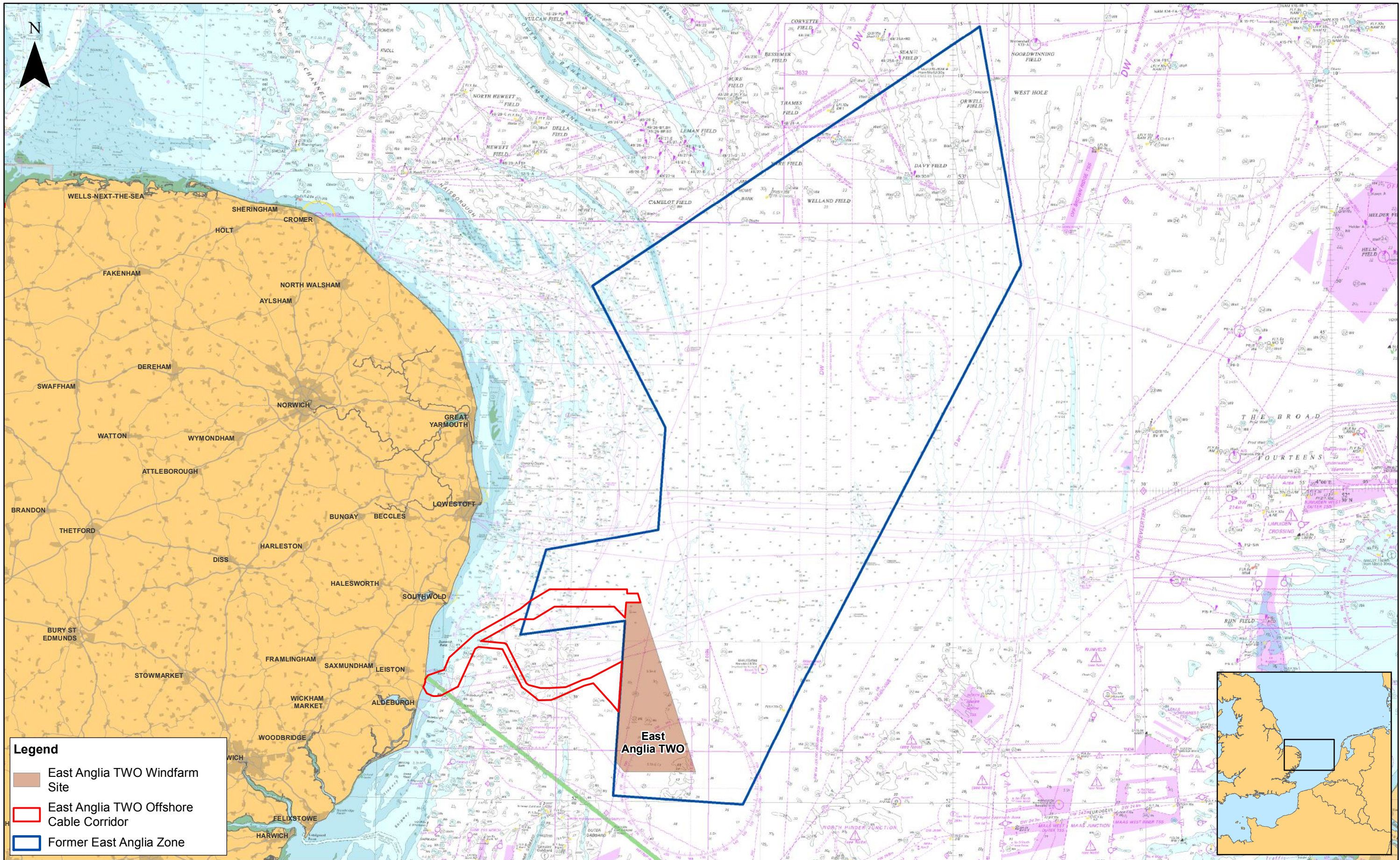
Figures



Preliminary Environmental Information
Volume 2

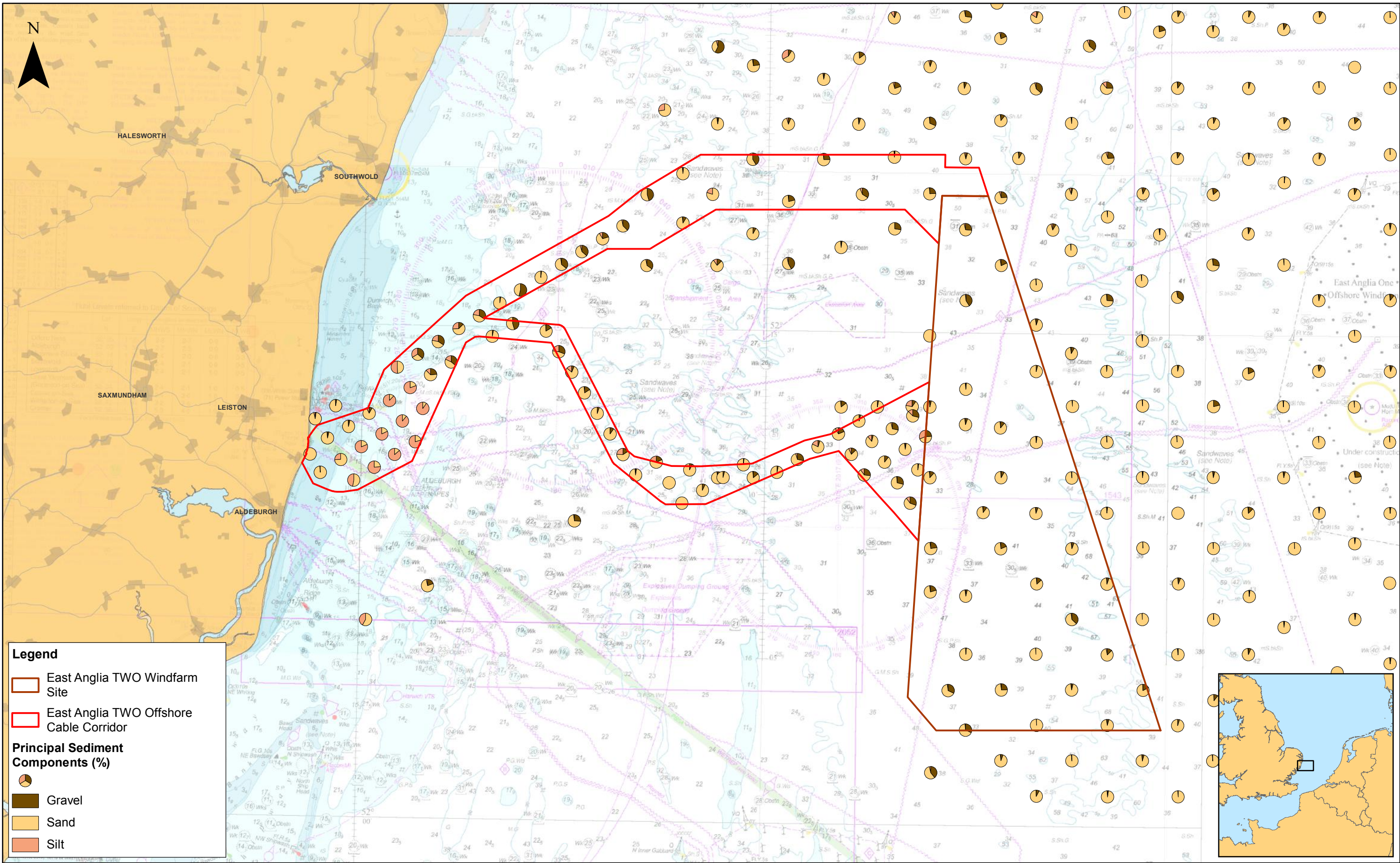
This page is intentionally blank


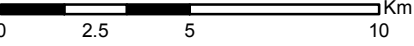


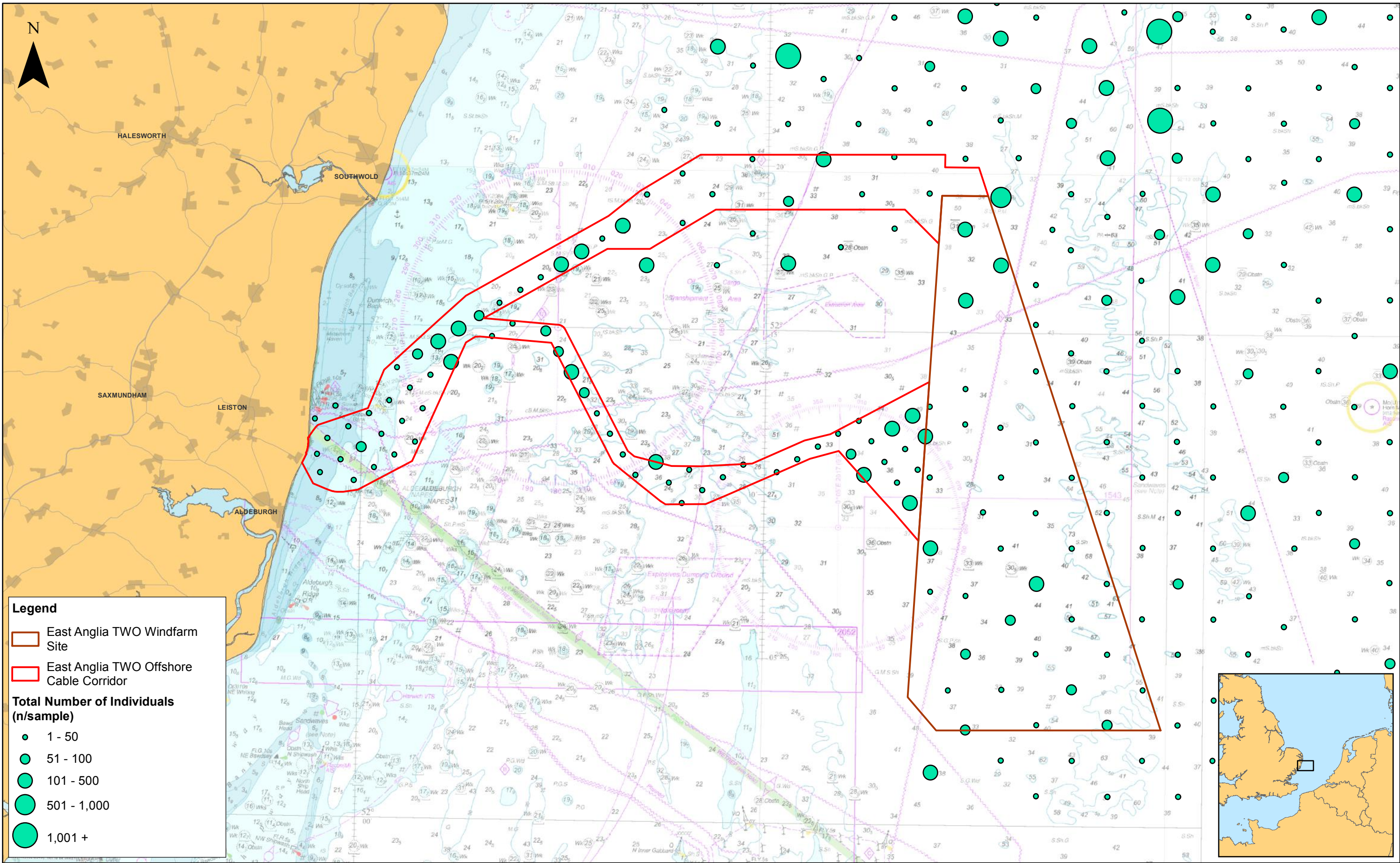
				1:200,000 Scale @ A3		0 2.5 5 10 Km		East Anglia TWO Benthic Grab Sample Locations		Drg No	EA1N-EA2-DEV-DRG-IBR-00TBC159	
2	07/11/2018	FC	Second Issue.	Prepared:	FC	<small>Source: © The Crown Estate, 2017. Charts from MarineFIND.co.uk Licence No EK001-0645-MF0095. Not to be used for navigation. This map has been produced to the latest known information at the time of issue, and has been produced for your information only. Please consult with the SPR Offshore GIS team to ensure the content is still current before using the information contained on this map. To the fullest extent permitted by law, we accept no responsibility or liability (whether in contract, tort (including negligence) or otherwise in respect of any errors or omissions in the information contained in the map and shall not be liable for any loss, damage or expense caused by such errors or omissions.</small>				Rev	2	Datum: WGS 1984 Projection: Zone 31N
1	16/08/2018	FC	First Issue.	Checked:	PM					Date	07/11/18	
Rev	Date	By	Comment	Approved:	PP					Figure	9.1	





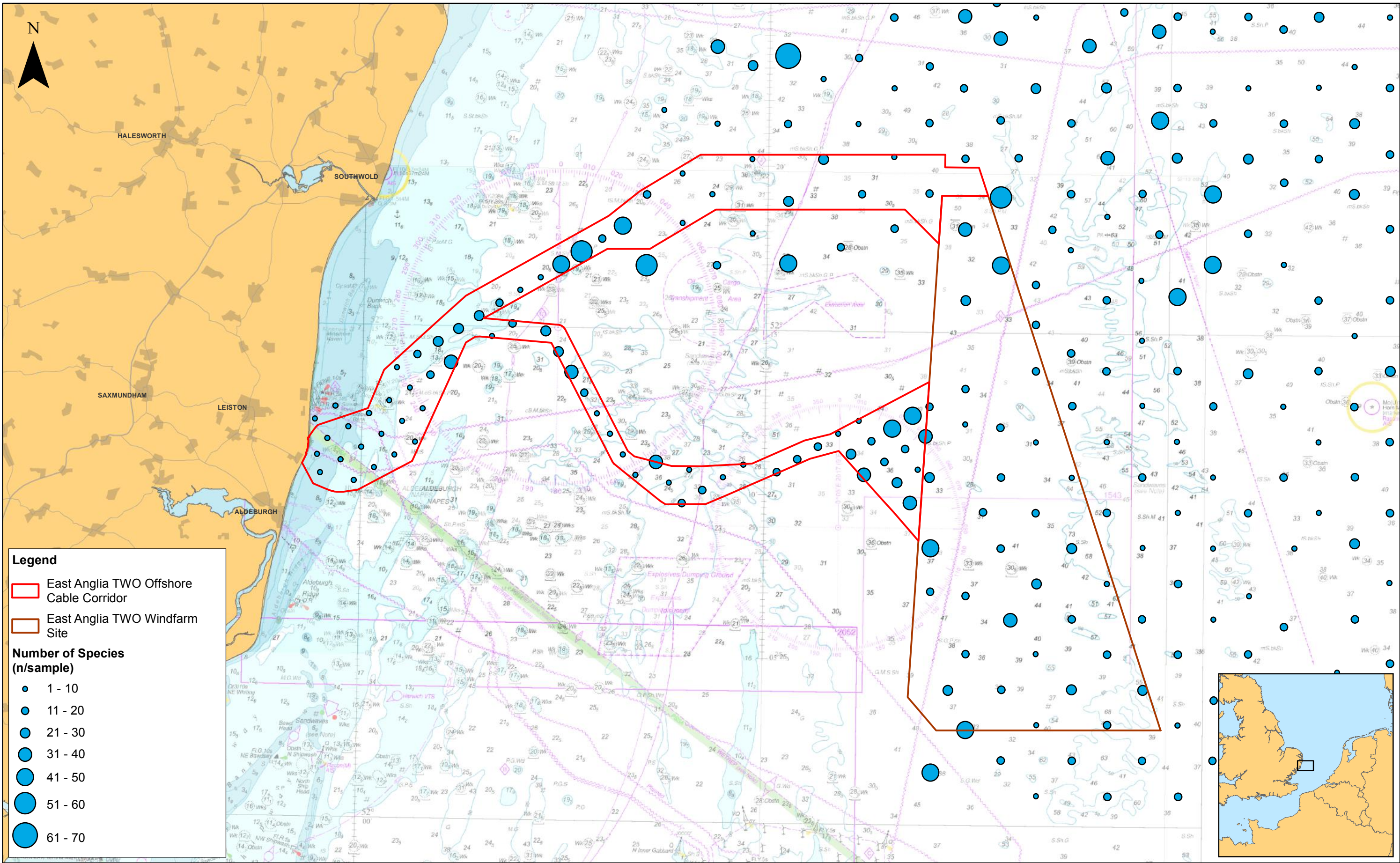
						1:630,000		East Anglia TWO Offshore Development Area in the Context of the Former East Anglia Zone	Drg No	EA1N-EA2-DEV-DRG-IBR-00TBC160		
	2	07/11/2018	FC	Second Issue.	Prepared:	FC			Scale @ A3	Rev	2	Datum: WGS 1984 Projection: Zone 31N
	1	16/08/2018	FC	First Issue.	Checked:	PM			<small>Source: © The Crown Estate, 2018. Charts from MarineFIND.co.uk Licence No EK001-0645-MF0095. Not to be used for navigation. This map has been produced to the latest known information at the time of issue, and has been produced for your information only. Please consult with the SPR Offshore GIS team to ensure the content is still current before using the information contained on this map. To the fullest extent permitted by law, we accept no responsibility or liability (whether in contract, tort (including negligence) or otherwise) in respect of any errors or omissions in the information contained in the map and shall not be liable for any loss, damage or expense caused by such errors or omissions.</small>	Date	07/11/18	
	Rev	Date	By	Comment	Approved:	PP			Figure	9.2		



						1:200,000 Scale @ A3				East Anglia TWO Sediment Distribution		Drg No	EA1N-EA2-DEV-DRG-IBR-00TBC171	
2	07/11/2018	FC	Second Issue.	Prepared:	FC	<small>Source: © MESL Ltd, 2011 & 2018. © The Crown Estate, 2018. Charts from MarineFIND.co.uk. Licence No EK001-0645-MF0095. Not to be used for navigation. This map has been produced to the latest known information at the time of issue, and has been produced for your information only. Please consult with the SPH Offshore GIS team to ensure the content is still current before using the information contained on this map. To the fullest extent permitted by law, we accept no responsibility or liability (whether in contract, tort (including negligence) or otherwise) in respect of any errors or omissions in the information contained in the map and shall not be liable for any loss, damage or expense caused by such errors or omissions.</small>						Rev	2	Datum: WGS 1984 Projection: Zone 31N
1	16/08/2018	FC	First Issue.	Checked:	PM							Date	07/11/18	
Rev	Date	By	Comment	Approved:	PP							Figure	9.3	



						1:200,000		<h1>East Anglia TWO</h1> <h2>Infaunal Abundance</h2>	Drg No		EA1N-EA2-DEV-DRG-IBR-00TBC172	
	2	07/11/2018	FC	Second Issue.	Prepared:	FC			<p>Source: © Bibby HydroMap Survey, 2018. © The Crown Estate, 2018. Charts from MarineFIND.co.uk Licence No EK001-0645-MF0095. Not to be used for navigation.</p> <p>This map has been produced to the latest known information at the time of issue, and has been produced for your information only. Please consult with the SPR Offshore GIS team to ensure the content is still current before using the information contained on this map. To the fullest extent permitted by law, we accept no responsibility or liability (whether in contract, tort (including negligence) or otherwise in respect of any errors or omissions in the information contained in the map and shall not be liable for any loss, damage or expense caused by such errors or omissions.</p>	Rev	2	Datum: WGS 1984 Projection: Zone 31N
	1	16/08/2018	FC	First Issue.	Checked:	PM	Date			07/11/18		
	Rev	Date	By	Comment	Approved:	PP	Figure			9.4		



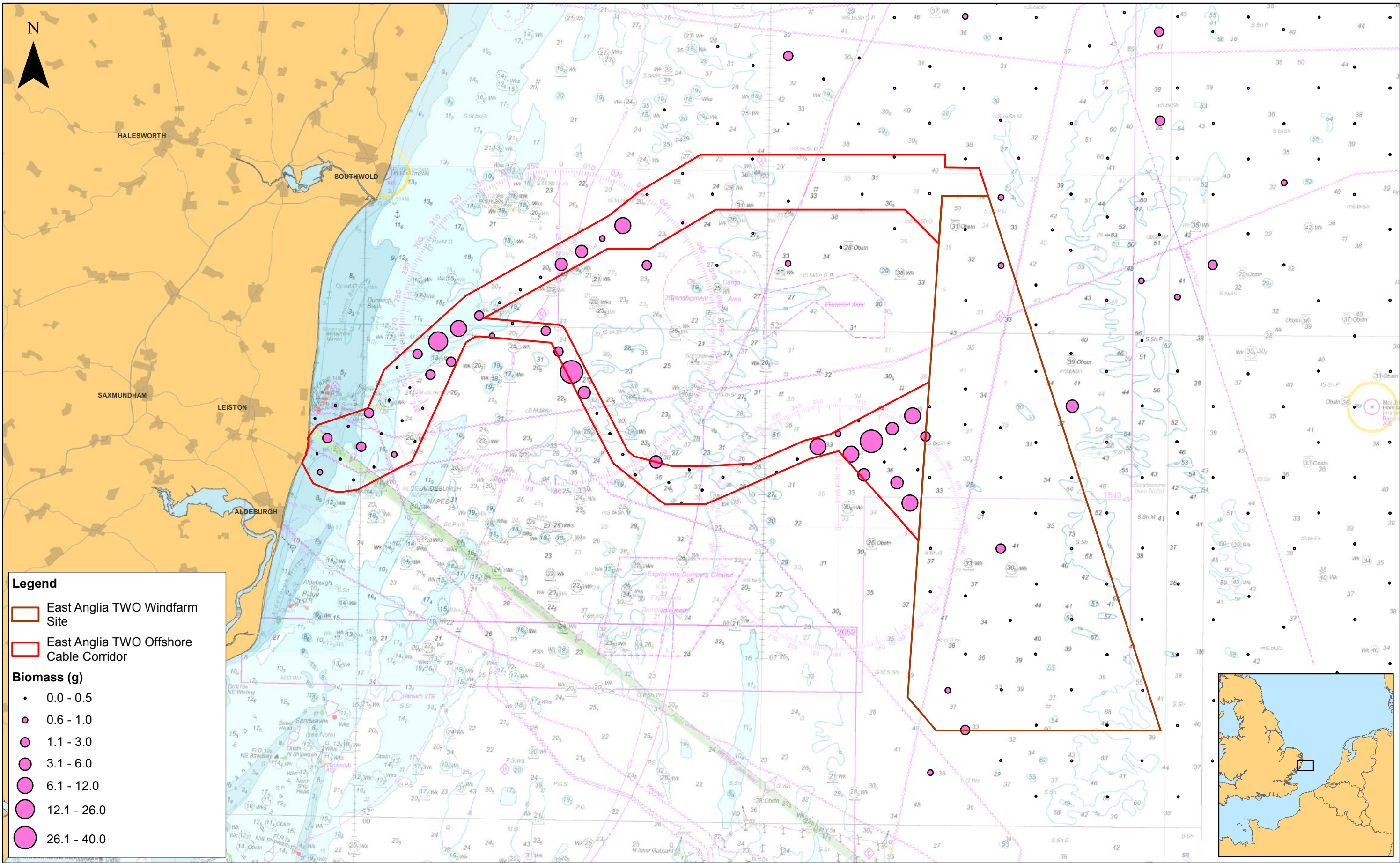
2	07/11/2018	FC	Second Issue.
1	16/08/2018	FC	First Issue.
Rev	Date	By	Comment


1:200,000				
Scale @ A3	0	2.5	5	10
	Km			
Source: © Bibby HydroMap Survey, 2018. © The Crown Estate, 2018. Charts from MarineFIND.co.uk Licence No EK001-0645-MF0095. Not to be used for navigation.				
This map has been produced to the latest known information at the time of issue, and has been produced for your information only. Please consult with the SPR Offshore GIS team to ensure the content is still current before using the information contained on this map. To the fullest extent permitted by law, we accept no responsibility or liability (whether in contract, tort (including negligence) or otherwise in respect of any errors or omissions in the information contained in the map and shall not be liable for any loss, damage or expense caused by such errors or omissions.				

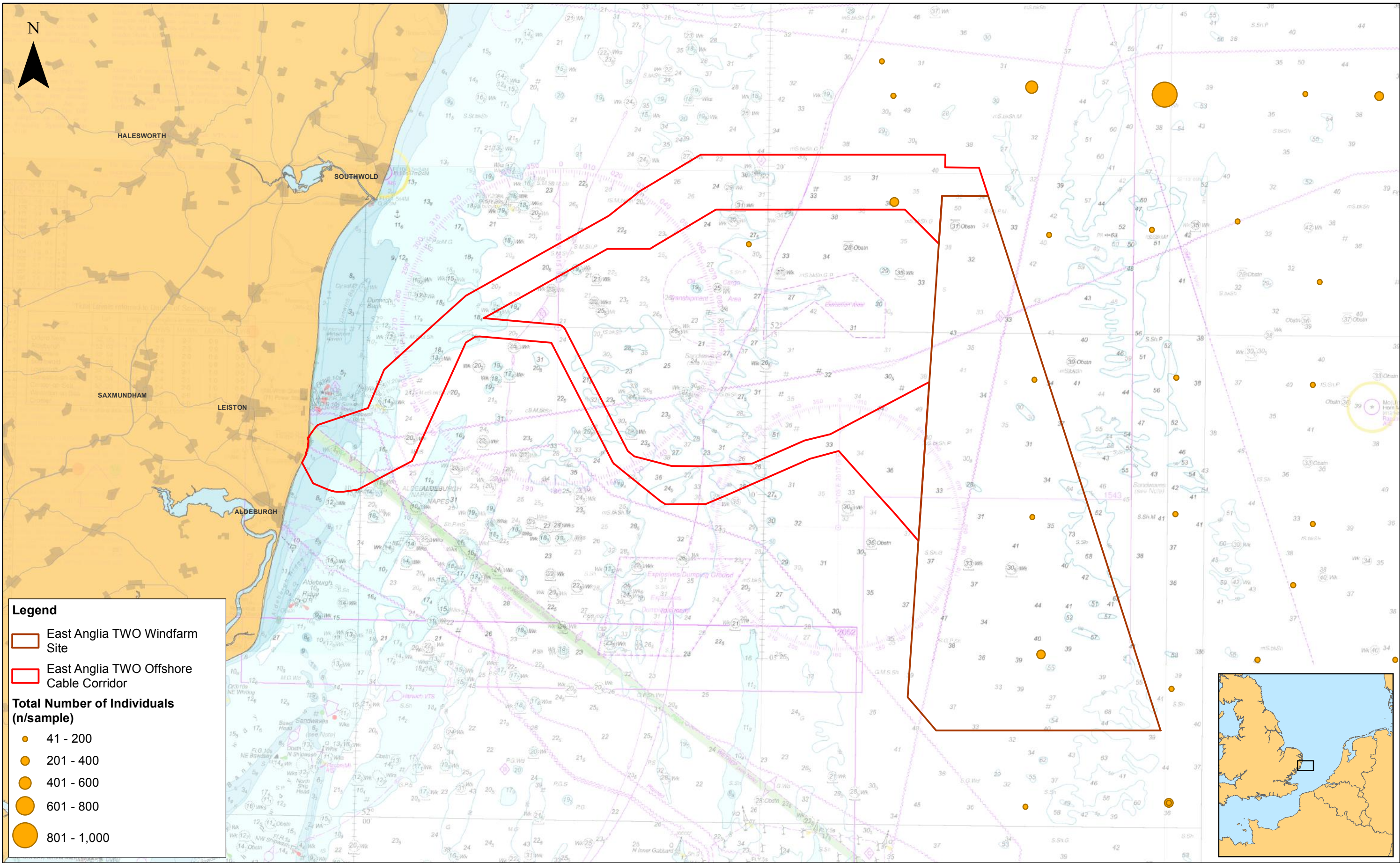
East Anglia TWO


Infaunal Diversity

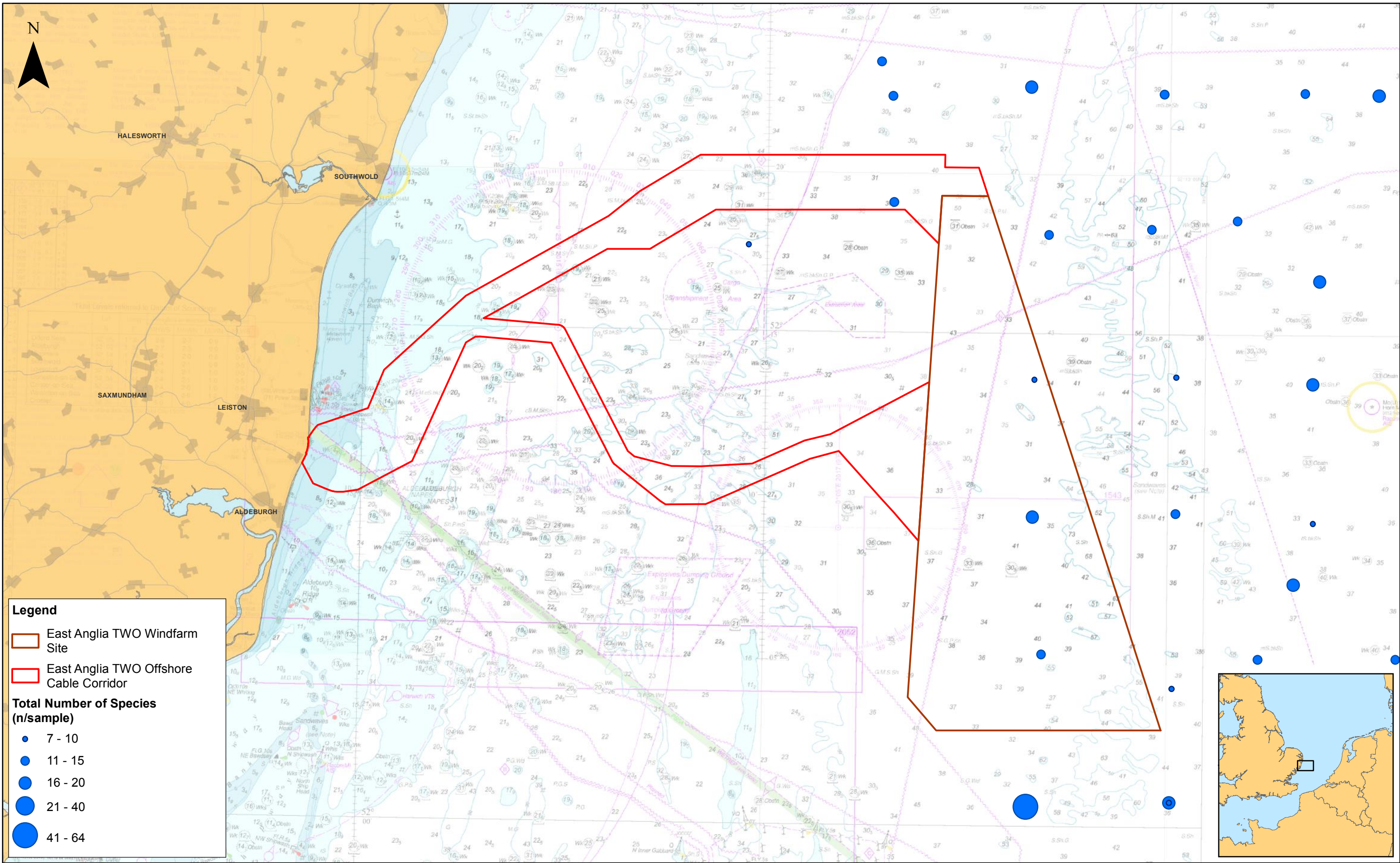
Drg No	EA1N-EA2-DEV-DRG-IBR-00TBC192		
Rev	2	Datum: WGS 1984	
Date	07/11/18	Projection: Zone 31N	
Figure	9.5		





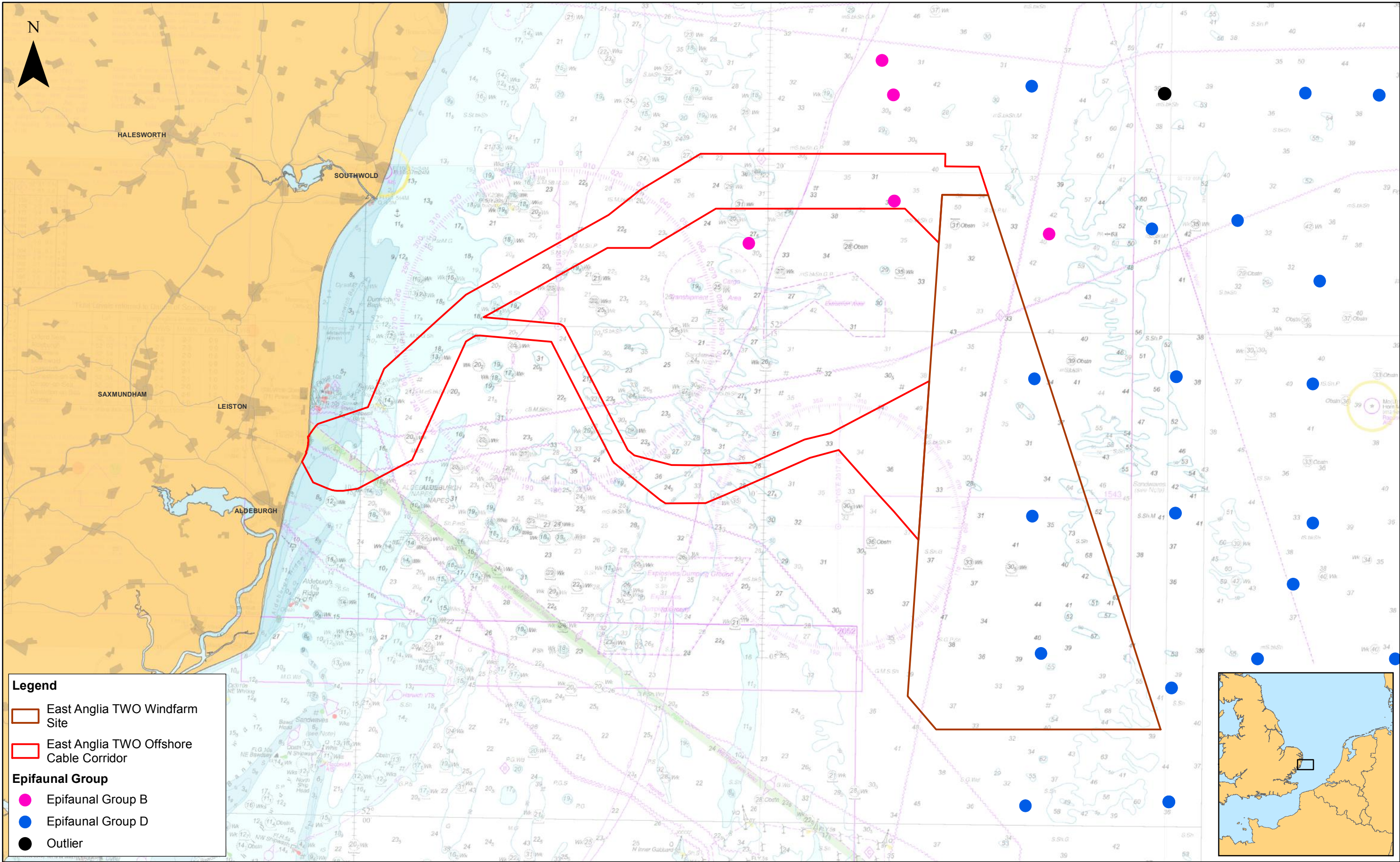
				1:200,000 Scale @ A3		0 2.5 5 10 Km		East Anglia TWO Infaunal Biomass		Drg No	EA1N-EA2-DEV-DRG-IBR-00TBC193	
2	07/11/2018	FC	Second Issue.	Prepared:	FC	<small>Source: © Bibby HydroMap Survey, 2018. © The Crown Estate, 2018. Charts from MarineFIND.co.uk Licence No EK001-0645-MF0095. Not to be used for navigation. This map has been produced to the latest known information at the time of issue, and has been produced for your information only. Please consult with the SPR Offshore GIS team to ensure the content is still current before using the information contained on this map. To the fullest extent permitted by law, we accept no responsibility or liability (whether in contract, tort (including negligence) or otherwise in respect of any errors or omissions in the information contained in the map and shall not be liable for any loss, damage or expense caused by such errors or omissions.</small>				Rev	2	Datum: WGS 1984 Projection: Zone 31N
1	16/08/2018	FC	First Issue.	Checked:	PM					Date	07/11/18	
Rev	Date	By	Comment	Approved:	PP					Figure	9.6	



				1:200,000 Scale @ A3		0 2.5 5 10 Km		East Anglia TWO Epifaunal Abundance		Drg No	EA1N-EA2-DEV-DRG-IBR-00TBC173	
2	07/11/2018	FC	Second Issue.	Prepared:	FC	<small>Source: © MESL, 2011. © The Crown Estate, 2018. Charts from MarineFIND.co.uk Licence No EK001-0645-MF0095. Not to be used for navigation. This map has been produced to the latest known information at the time of issue, and has been produced for your information only. Please consult with the SPR Offshore GIS team to ensure the content is still current before using the information contained on this map. To the fullest extent permitted by law, we accept no responsibility or liability (whether in contract, tort (including negligence) or otherwise) in respect of any errors or omissions in the information contained in the map and shall not be liable for any loss, damage or expense caused by such errors or omissions.</small>				Rev	2	Datum: WGS 1984 Projection: Zone 31N
1	16/08/2018	FC	First Issue.	Checked:	PM					Date	07/11/18	
Rev	Date	By	Comment	Approved:	PP					Figure	9.8	



 SCOTTISHPOWER RENEWABLES						1:200,000 Scale @ A3		East Anglia TWO Epifaunal Diversity	Drg No	EA1N-EA2-DEV-DRG-IBR-00TBC174	
	2	07/11/2018	FC	Second Issue.	Prepared:	FC			<small>Source: © MESL, 2011. © The Crown Estate, 2018. Charts from MarineFIND.co.uk Licence No EK001-0645-MF0095. Not to be used for navigation. This map has been produced to the latest known information at the time of issue, and has been produced for your information only. Please consult with the SPR Offshore GIS team to ensure the content is still current before using the information contained on this map. To the fullest extent permitted by law, we accept no responsibility or liability (whether in contract, tort (including negligence) or otherwise in respect of any errors or omissions in the information contained in the map and shall not be liable for any loss, damage or expense caused by such errors or omissions.</small>	Rev	2
	1	16/08/2018	FC	First Issue.	Checked:	PM	Date			07/11/18	
	Rev	Date	By	Comment	Approved:	PP	Figure			9.9	



2	07/11/2018	FC	Second Issue.	Prepared:	FC
1	16/08/2018	FC	First Issue.	Checked:	PM
Rev	Date	By	Comment	Approved:	PP

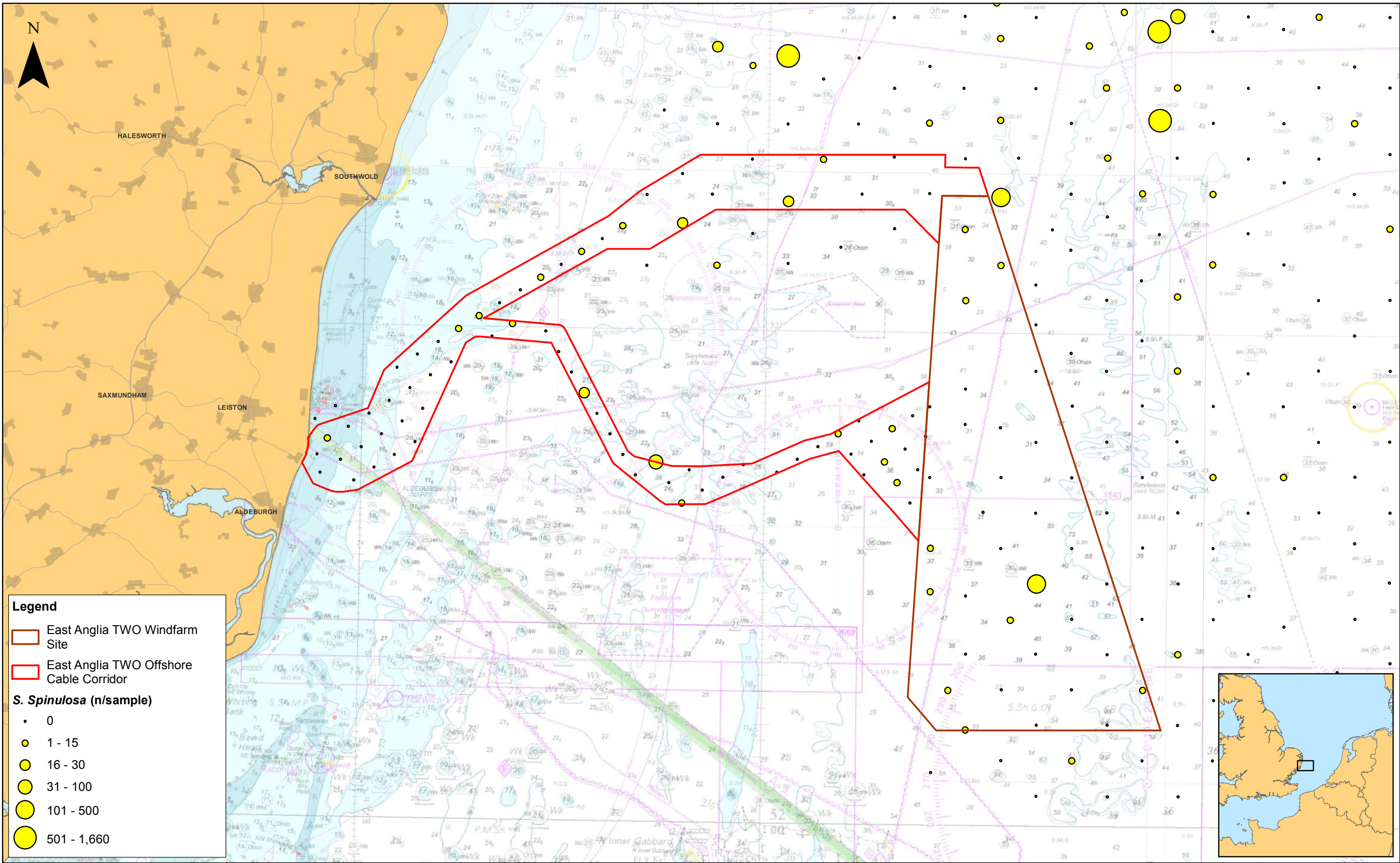
1:200,000
Scale @ A3

0 2.5 5 10 Km

East Anglia TWO

Epifaunal Groups

Drg No	EA1N-EA2-DEV-DRG-IBR-00TBC212		
Rev	1	Datum: WGS 1984	
Date	07/11/18	Projection: Zone 31N	
Figure	9.10		



2	07/11/2018	FC	Second Issue.
1	16/08/2018	FC	First Issue.
Rev	Date	By	Comment

1:200,000

Scale @ A3

0

2.5

5

10

Km

Source: © MESH, 2011 & 2018. © The Crown Estate, 2018. Charts from MarineFIND.co.uk Licence No EK001-0645-MF0095. Not to be used for navigation.

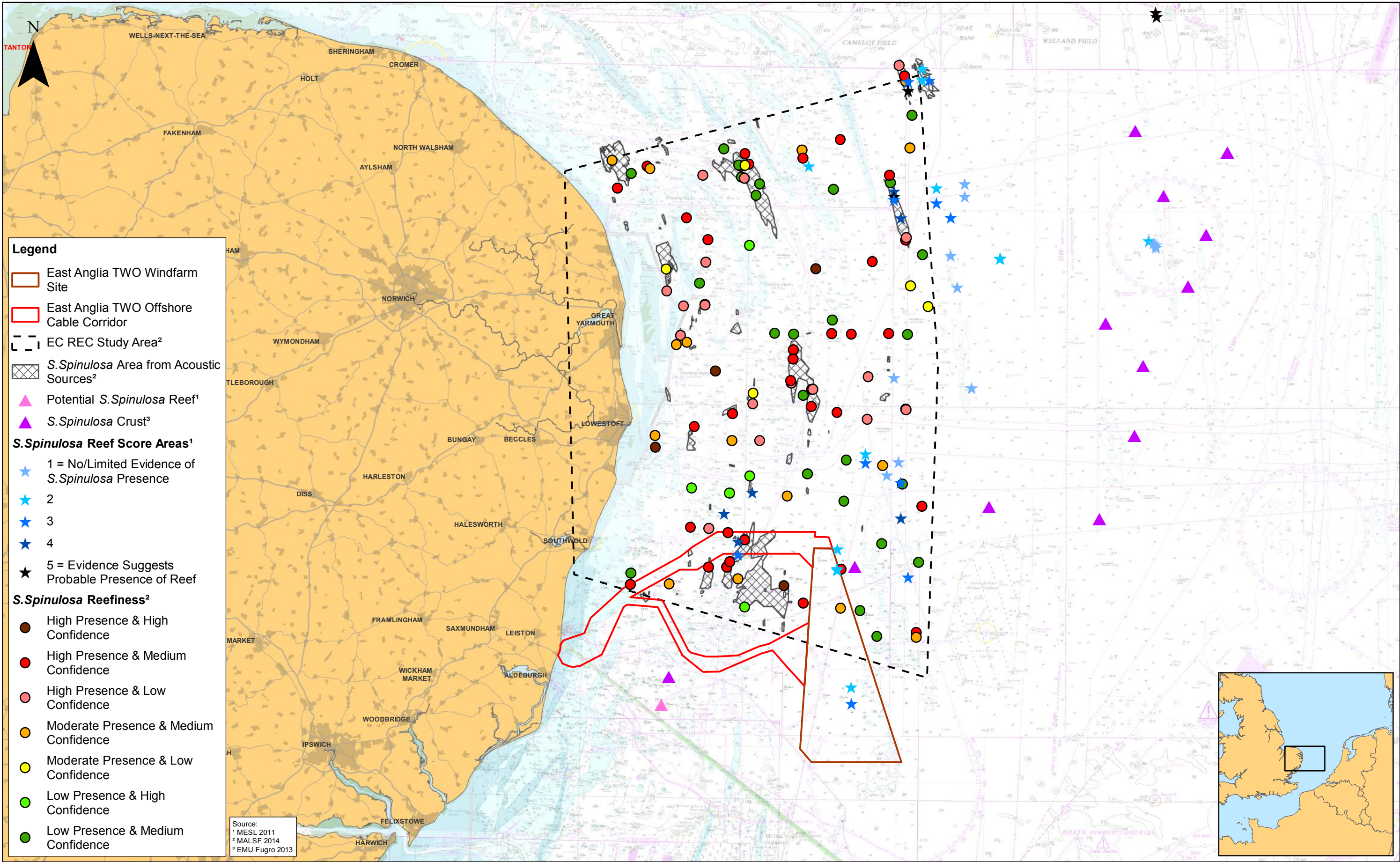
This map has been produced to the latest known information at the time of issue, and has been produced for your information only. Please consult with the SPR Offshore GIS team to ensure the content is still current before using the information contained on this map.

To the fullest extent permitted by law, we accept no responsibility or liability (whether in contract, tort (including negligence) or otherwise) in respect of any errors or omissions in the information contained in the map and shall not be liable for any loss, damage or expense caused by such errors or omissions.

East Anglia TWO

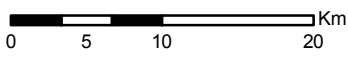
Sabellaria Spinulosa Abundance

Drg No	EA1N-EA2-DEV-DRG-IBR-00TBC195		
Rev	2	Datum: WGS 1984	
Date	07/11/18	Projection: Zone 31N	
Figure	9.11		



2	07/11/2018	FC	Second Issue.	Prepared:	FC
1	16/08/2018	FC	First Issue.	Checked:	PM
Rev	Date	By	Comment	Approved:	PP

1:500,000
Scale @ A3

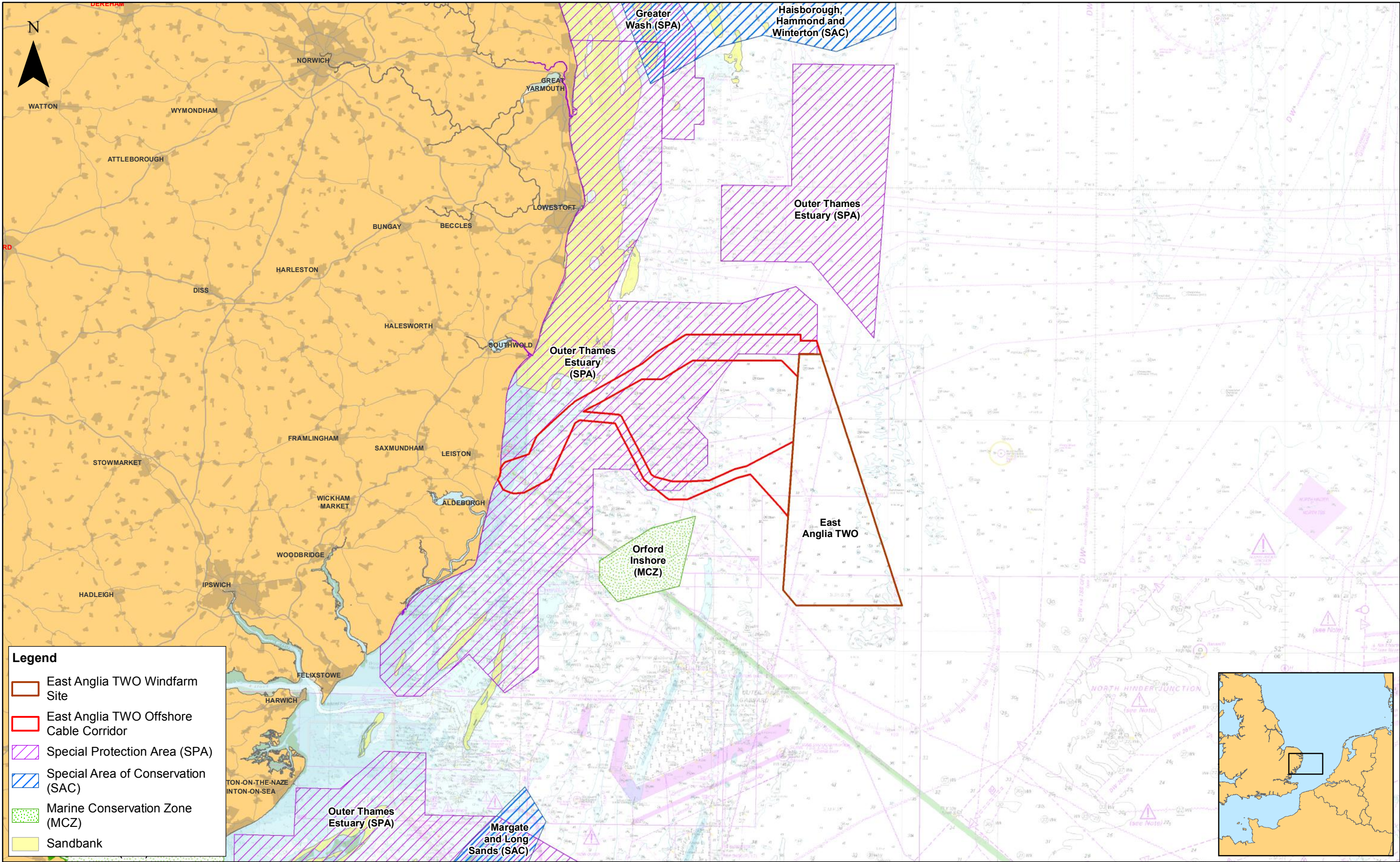


This map has been produced to the latest known information at the time of issue, and has been produced for your information only. Please consult with the SPR Offshore GIS team to ensure the content is still current before using the information contained on this map. To the fullest extent permitted by law, we accept no responsibility or liability (whether in contract, tort (including negligence) or otherwise in respect of any errors or omissions in the information contained in the map and shall not be liable for any loss, damage or expense caused by such errors or omissions.

East Anglia TWO

Sabellaria Spinulosa Reef

Drg No	EA1N-EA2-DEV-DRG-IBR-00TBC196		
Rev	2	Datum: WGS 1984	
Date	07/11/18	Projection: Zone 31N	
Figure	9.12		



						1:425,000		0 5 10 20 Km		East Anglia TWO		Drg No		EA1N-EA2-DEV-DRG-IBR-00TBC197	
						Scale @ A3				Designated Sites		Rev		2	
												Date		07/11/18	
												Figure		9.13	
														Datum:	
														WGS 1984	
														Projection:	
														Zone 31N	

This page is intentionally blank