

# **East Anglia TWO Offshore Windfarm**

## **Chapter 4**

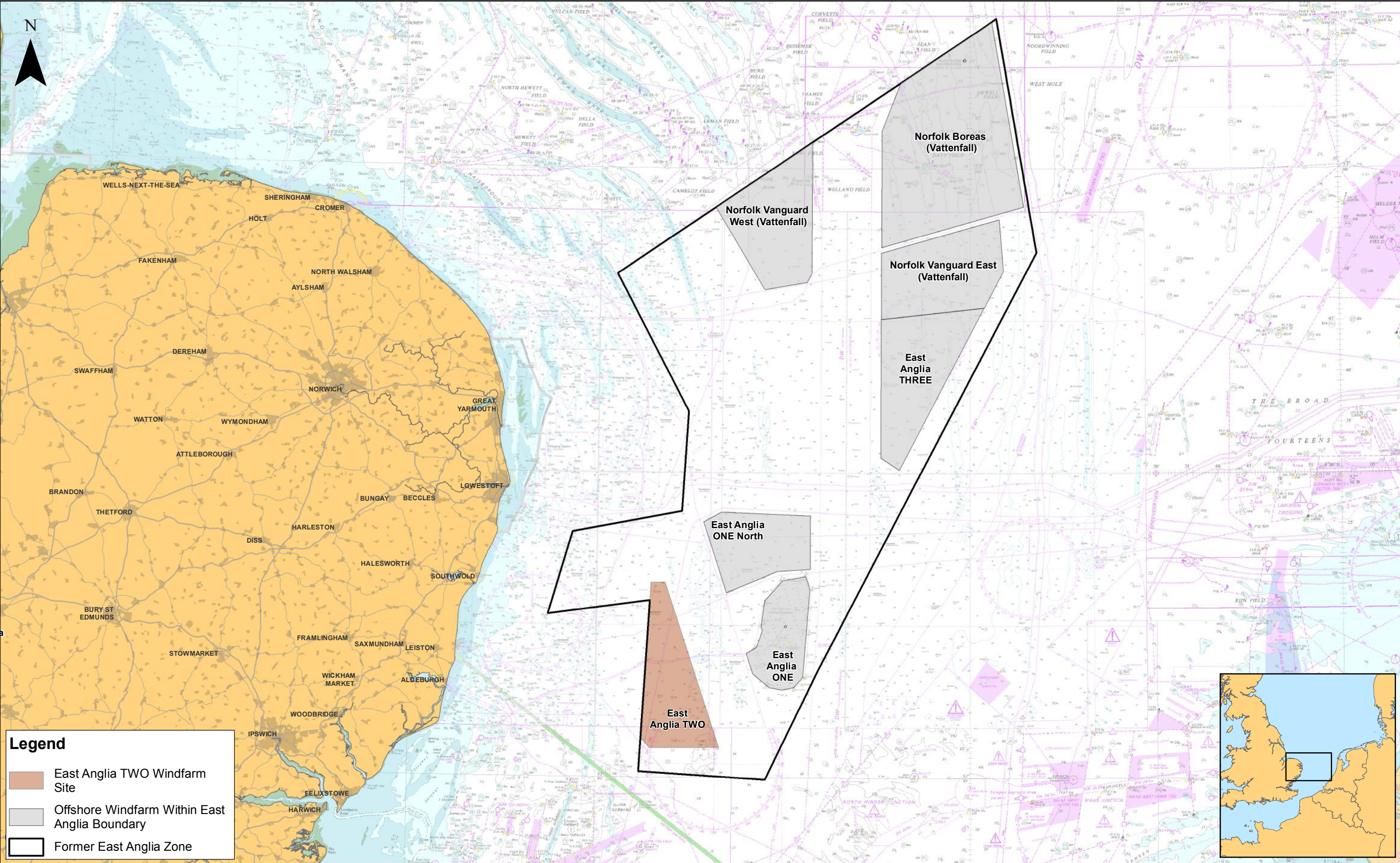
### **Site Selection and Assessment of Alternatives**



#### **Figures**

Preliminary Environmental Information  
Volume 2

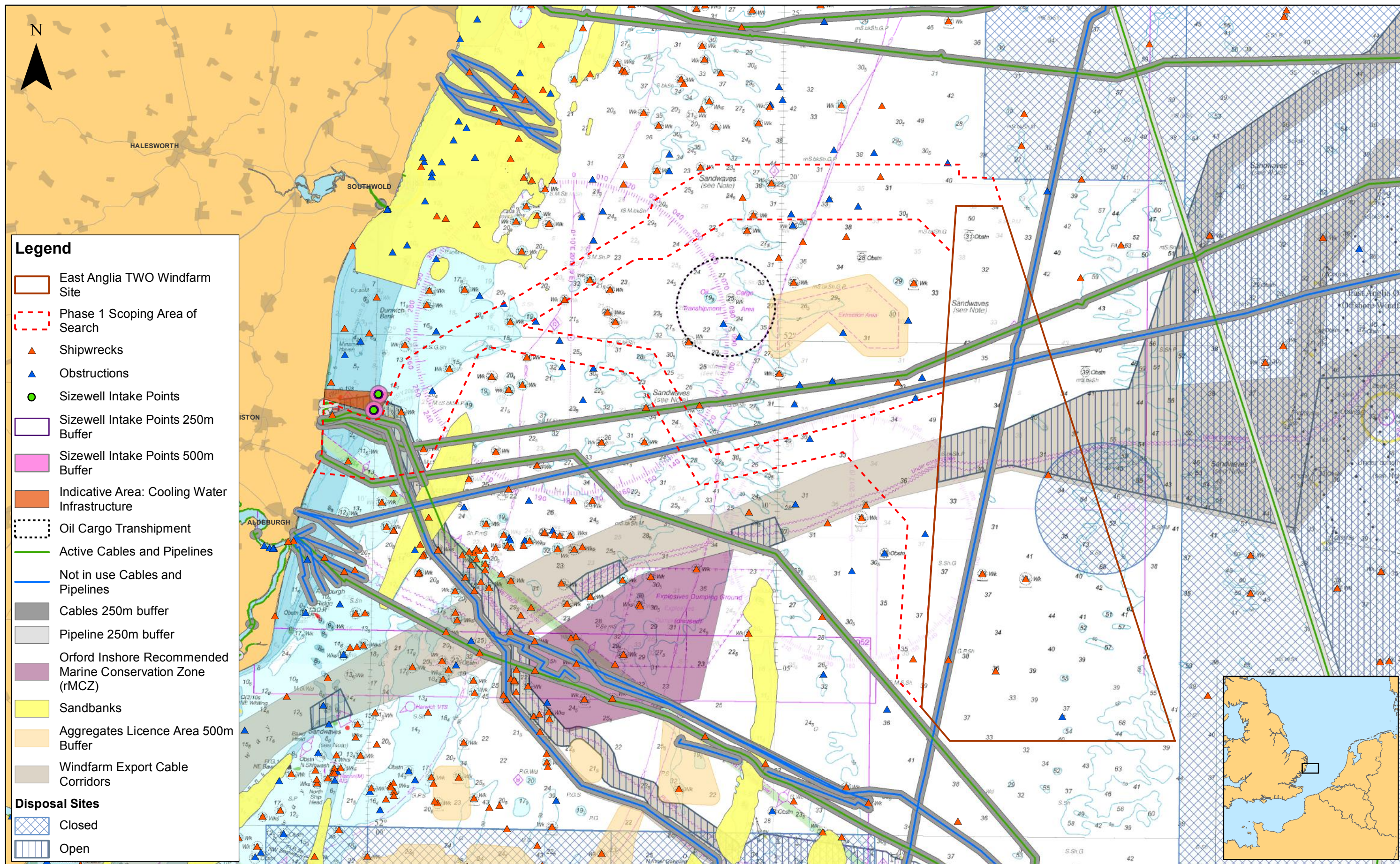
**This page is intentionally blank**





						1:650,000		<h1>East Anglia TWO</h1> <h2>East Anglia TWO Offshore Windfarm Site and Former East Anglia Zone</h2>	<b>Drg No</b>	EA1N-EA2-DEV-DRG-IBR-00TBC49		
	2	15/11/2018	FC	Second Issue.	Prepared:	FC			<b>Scale @ A3</b>	<b>Rev</b>	2	Datum: WGS 1984 Projection: Zone 31N
	1	06/07/2018	FC	First Issue.	Checked:	BK	<small>Source: © The Crown Estate, 2017. Charts from MarineFIND.co.uk Licence No EK001-0645-MF0095. Not to be used for navigation. This map has been produced to the latest known information at the time of issue, and has been produced for your information only. Please consult with the SPR Offshore GIS team to ensure the content is still current before using the information contained on this map. To the fullest extent permitted by law, we accept no responsibility or liability (whether in contract, tort (including negligence) or otherwise in respect of any errors or omissions in the information contained in the map and shall not be liable for any loss, damage or expense caused by such errors or omissions.</small>		<b>Date</b>	15/11/18		
	<b>Rev</b>	<b>Date</b>	<b>By</b>	<b>Comment</b>	<b>Approved:</b>	<b>PP</b>	<b>Figure</b>		4.1			





2	15/11/2018	FC	Second Issue.	Prepared:	FC
1	06/07/2018	FC	First Issue.	Checked:	BK
Rev	Date	By	Comment	Approved:	PP

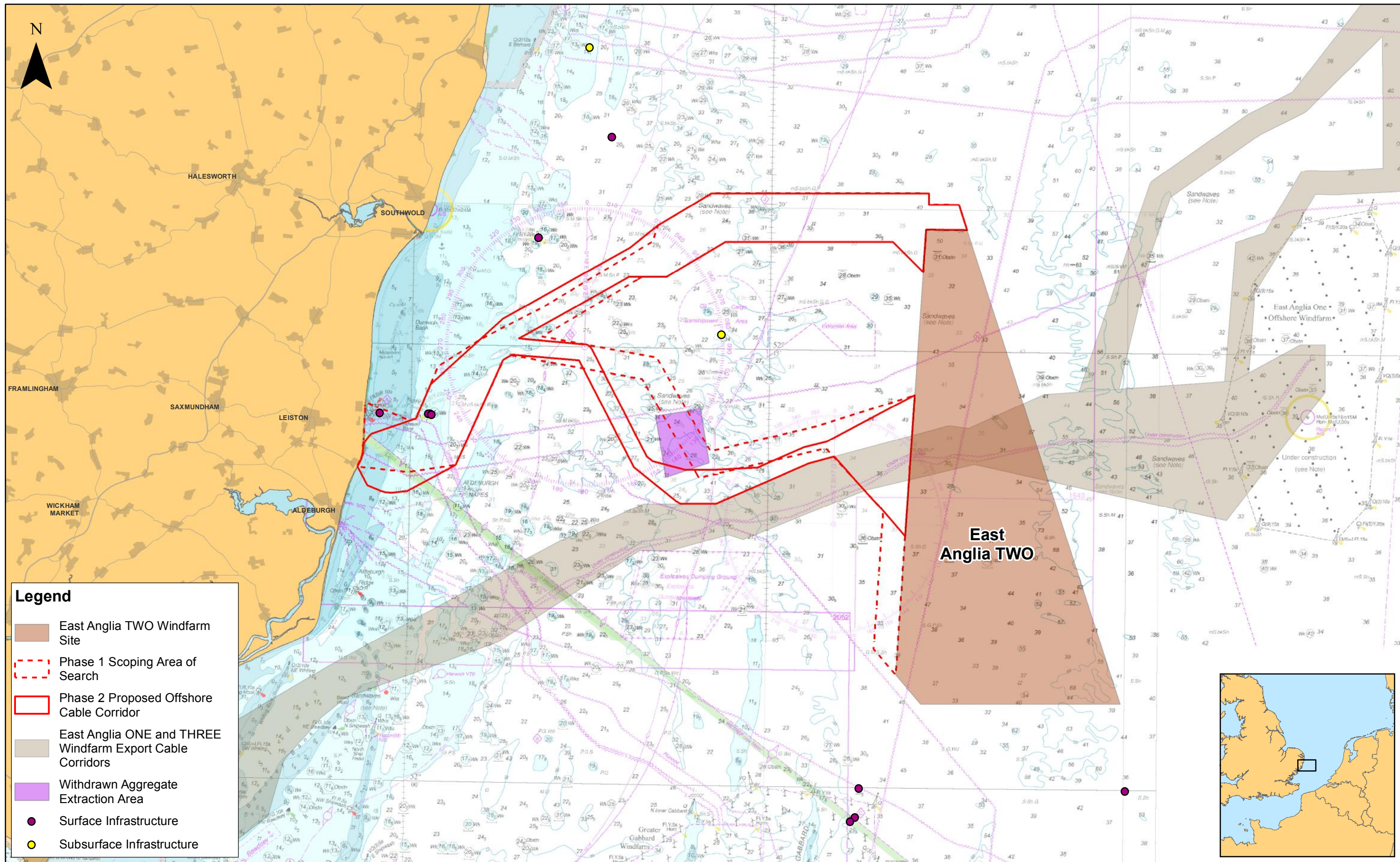
1:200,000				
Scale @ A3				
	0	2.5	5	10
	Km			
Source: © The Crown Estate, 2018. © Cefas, 2017. Data provided by MarineFind, 2017. Charts from MarineFIND.co.uk © Licence No EK001-0645-MF0095				
Not to be used for navigation.				
This map has been produced to the latest known information at the time of issue, and has been produced for your information only.				
Please consult with the SPR Offshore GIS team to ensure the content is still current before using the information contained on this map.				
To the fullest extent permitted by law, we accept no responsibility or liability (whether in contract, tort (including negligence) or otherwise in respect of any errors or omissions in the information contained in the map and shall not be liable for any loss, damage or expense caused by such errors or omissions.				

## East Anglia TWO

Phase 1 - East Anglia TWO Scoping Offshore Export Cable Corridor and Constraints

Drg No	EA1N-EA2-DEV-DRG-IBR-00TBC48		
Rev	2	Datum: WGS 1984	
Date	15/11/18	Projection: Zone 31N	
Figure	4.2		





2	15/11/2018	FC	Second Issue.
1	06/07/2018	FC	First Issue.
Rev	Date	By	Comment

Prepared:	FC
Checked:	BK
Approved:	PP

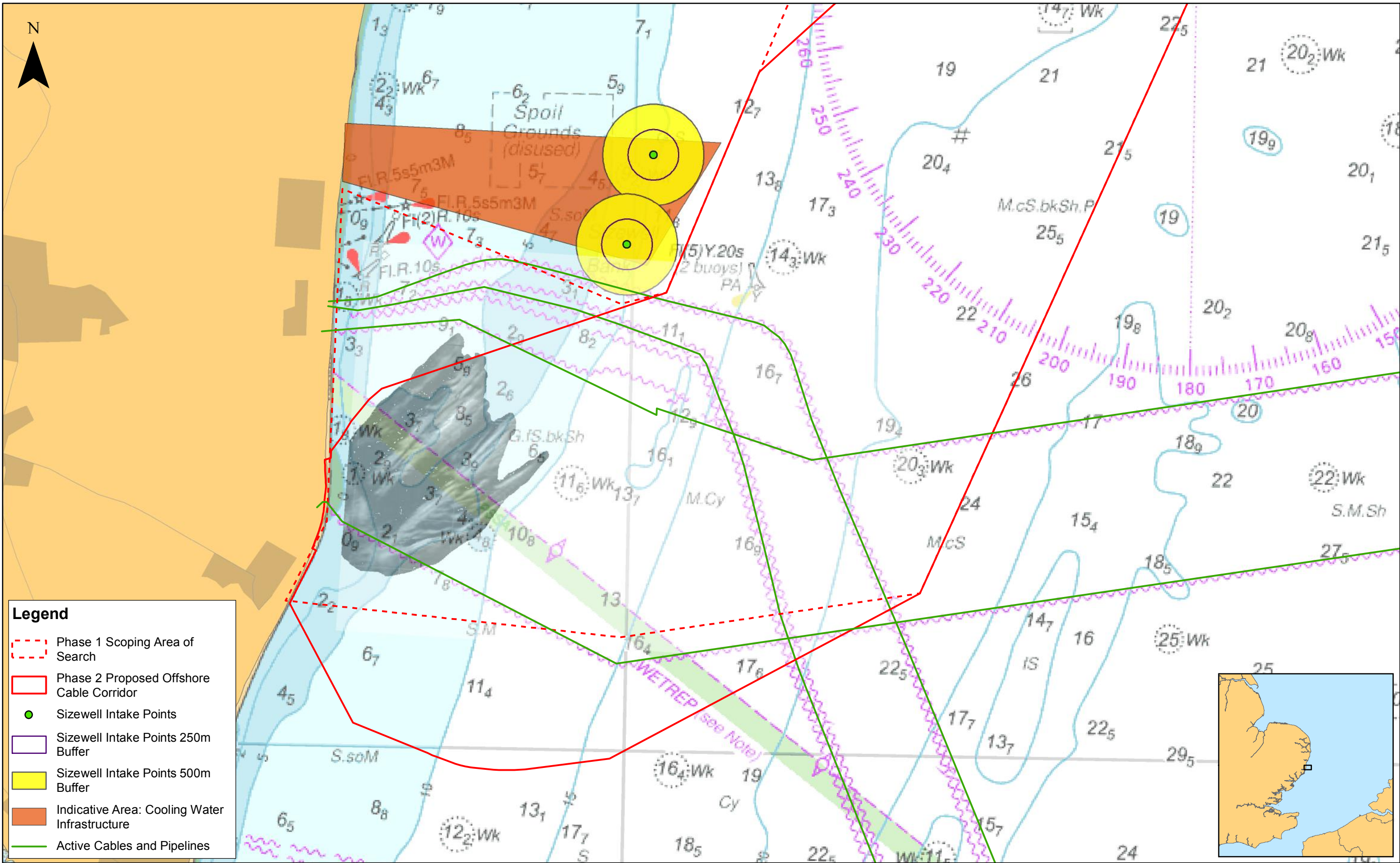
1:225,000
Scale @ A3
0 2.5 5 10 Km
Source: © The Crown Estate, 2017. Charts from MarineFIND.co.uk Licence No EK001-0645-MF0095. Not to be used for navigation.
This map has been produced to the latest known information at the time of issue, and has been produced for your information only.
Please consult with the SPK Offshore GIS team to ensure the content is still current before using the information contained on this map.
To the fullest extent permitted by law, we accept no responsibility or liability (whether in contract, tort (including negligence) or otherwise) in respect of any errors or omissions in the information contained in the map and shall not be liable for any loss, damage or expense caused by such errors or omissions.

## East Anglia TWO

Phase 2 - Post-Scoping Refinements to the East Anglia TWO Offshore Export Cable Corridor

Drg No	EA1N-EA2-DEV-DRG-IBR-00TBC47
Rev	2
Date	15/11/18
Figure	4.3
Datum:	WGS 1984
Projection:	Zone 31N





**Legend**

Phase 1 Scoping Area of Search

Phase 2 Proposed Offshore Cable Corridor

Sizewell Intake Points

Sizewell Intake Points 250m Buffer

Sizewell Intake Points 500m Buffer

Indicative Area: Cooling Water Infrastructure

Active Cables and Pipelines

2	15/11/2018	FC	Second Issue.	Prepared:	FC
1	06/07/2018	FC	First Issue.	Checked:	BK
Rev	Date	By	Comment	Approved:	PP

1:35,000  
Scale @ A3

Source: Data provided by MarineFind, 2018. Charts from MarineFind.co.uk © Licence No EK001-0645-MF0095. Not to be used for navigation.

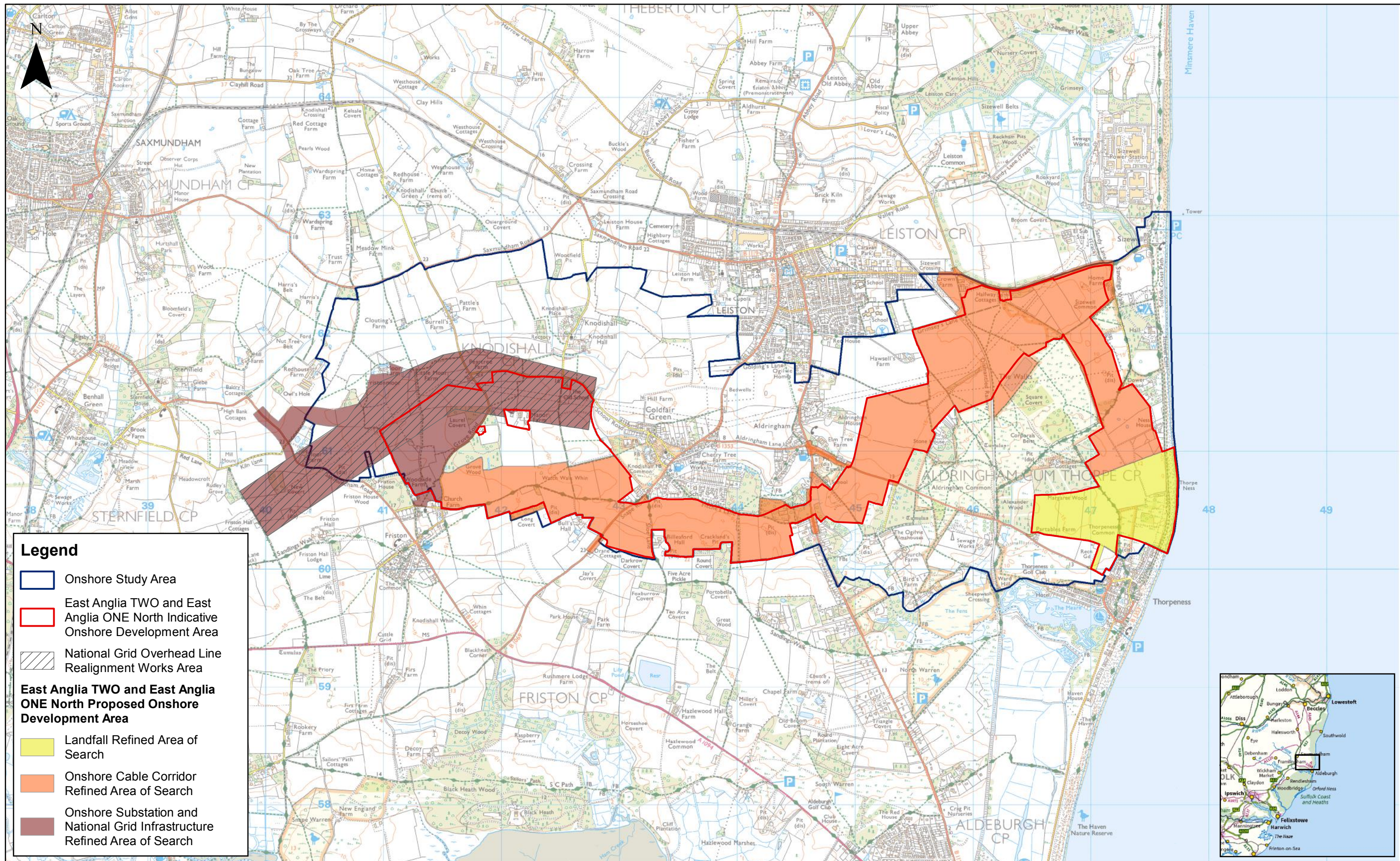
This map has been produced to the latest known information at the time of issue, and has been produced for your information only. Please consult with the SPR Offshore GIS team to ensure the content is still current before using the information contained on this map.

To the fullest extent permitted by law, we accept no responsibility or liability (whether in contract, tort (including negligence) or otherwise in respect of any errors or omissions in the information contained in the map and shall not be liable for any loss, damage or expense caused by such errors or omissions.

**East Anglia TWO**  
East Anglia TWO Offshore Export Cable Corridor Nearshore Refinements

Drg No	EA1N-EA2-DEV-DRG-IBR-00TBC50	
Rev	2	Datum: WGS 1984
Date	15/11/18	Projection: Zone 31N
Figure	4.4	





1	15/11/2018	FC	Second Issue.	Prepared:	FC
1	06/07/2018	FC	First Issue.	Checked:	PW
Rev	Date	By	Comment	Approved:	AH

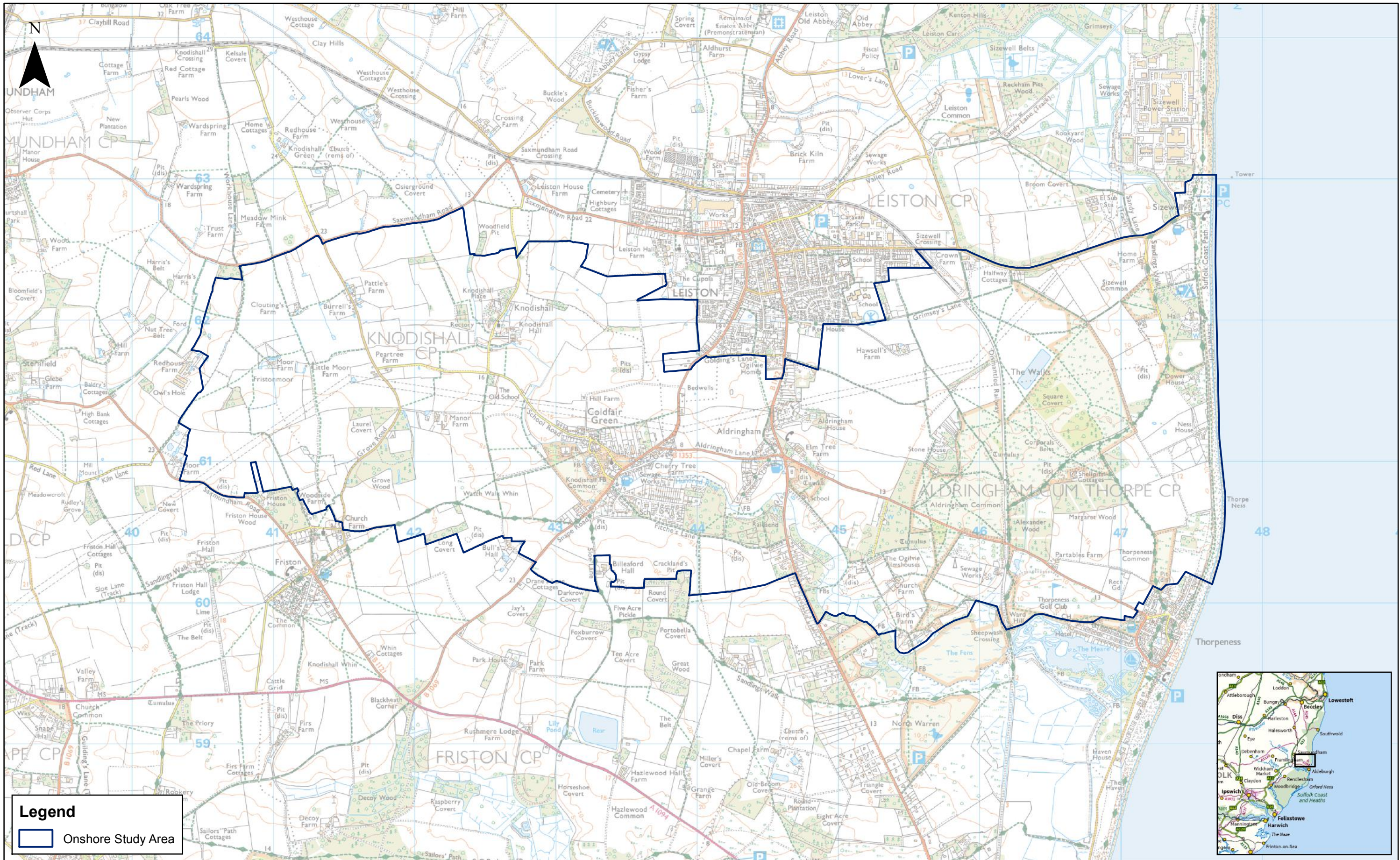
1:30,000	Scale @ A3
0 0.5 1 Km	
Source: © Crown copyright and database rights 2018. Ordnance Survey 0100031673.	
This map has been produced to the latest known information at the time of issue, and has been produced for your information only. Please consult with the SPR Offshore GIS team to ensure the content is still current before using the information contained on this map. To the fullest extent permitted by law, we accept no responsibility or liability (whether in contract, tort (including negligence) or otherwise) in respect of any errors or omissions in the information contained in the map and shall not be liable for any loss, damage or expense caused by such errors or omissions.	

## East Anglia TWO

### East Anglia TWO and East Anglia ONE North Indicative Onshore Development Area

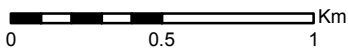
Drg No	EA1N-EA2-DEV-DRG-IBR-00TBC53	
Rev	2	Coordinate System: BNG
Date	15/11/18	Datum: OSGB36
Figure	4.5	





2	15/11/2018	FC	Second Issue.
1	06/07/2018	FC	First Issue.
Rev	Date	By	Comment

1:25,000	Scale @ A3
Prepared:	FC
Checked:	PW
Approved:	AH



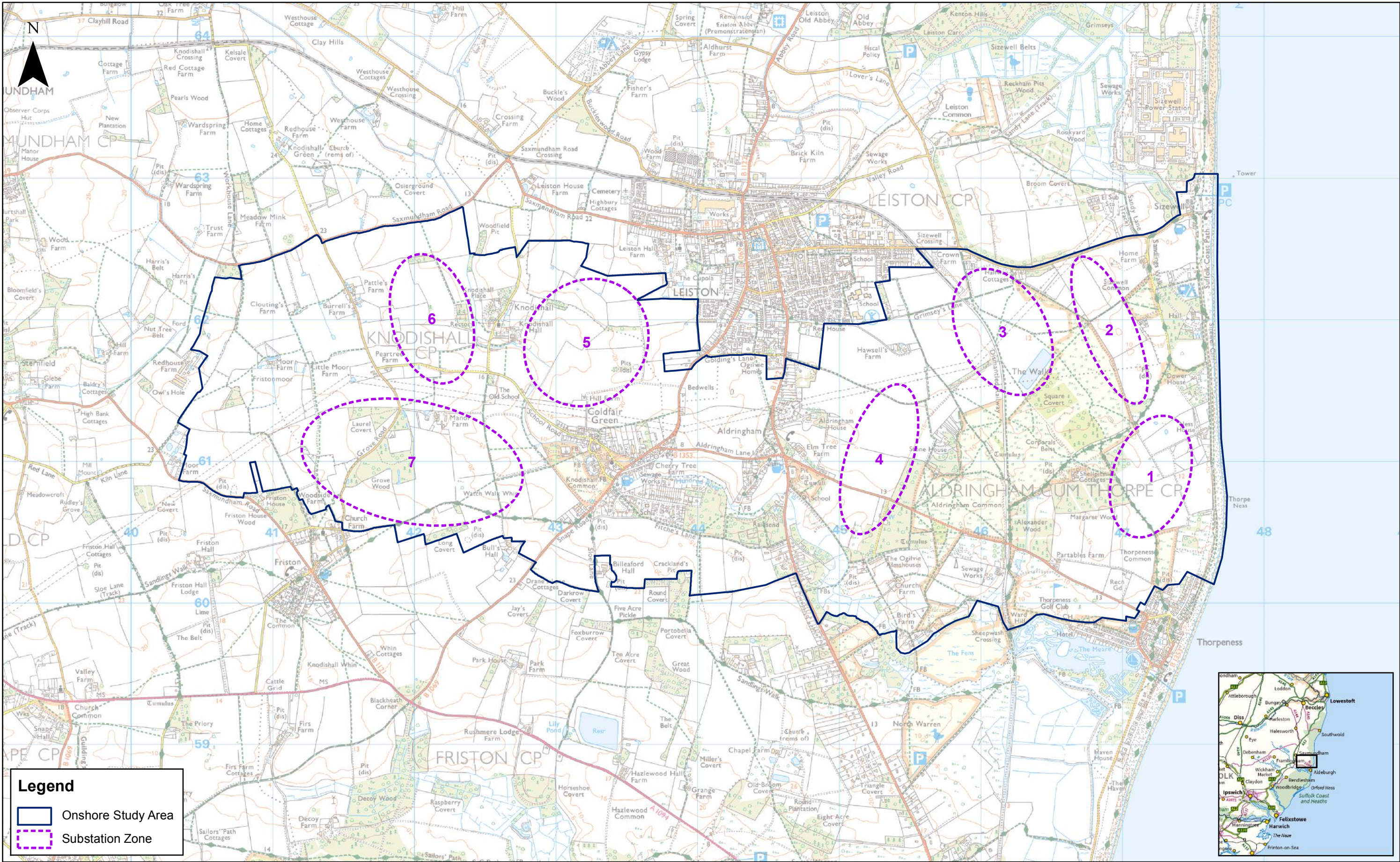
## East Anglia TWO

### East Anglia TWO and East Anglia ONE

### North Onshore Site Selection Study Area

Drg No	EA1N-EA2-DEV-DRG-IBR-00TBC51	
Rev	2	Coordinate System: BNG Datum: OSGB36
Date	15/11/18	
Figure	4.6	





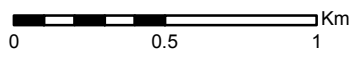
2	15/11/2018	FC	Second Issue.
1	06/07/2018	FC	First Issue.
Rev	Date	By	Comment

Prepared: FC

Checked: PW

Approved: AH

1:25,000  
Scale @ A3



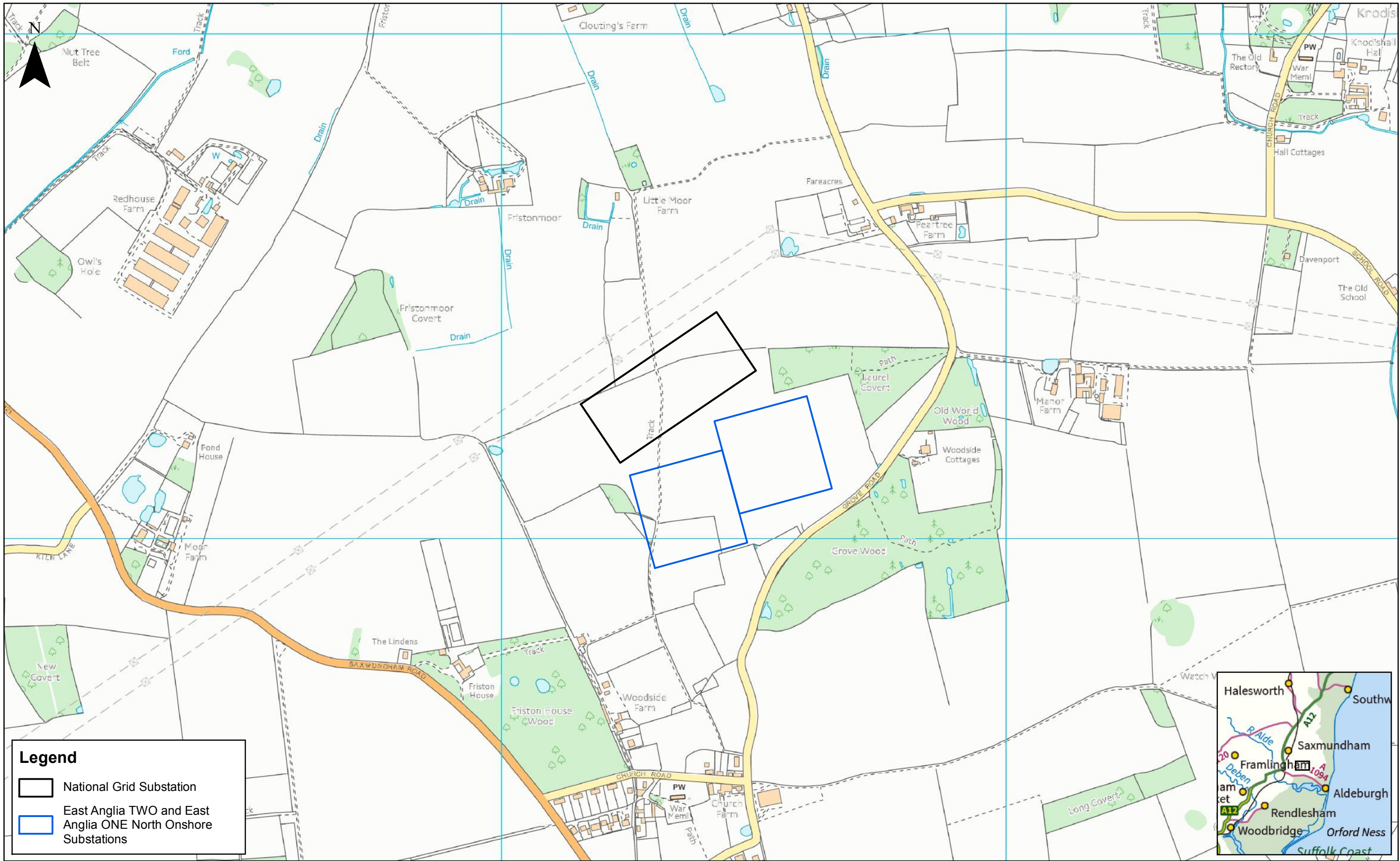
Source: © Crown copyright and database rights 2018. Ordnance Survey 0100031673.  
This map has been produced to the latest known information at the time of issue, and has been produced for your information only. Please consult with the SPR Offshore GIS team to ensure the content is still current before using the information contained on this map.  
To the fullest extent permitted by law, we accept no responsibility or liability (whether in contract, tort (including negligence) or otherwise in respect of any errors or omissions in the information contained in the map and shall not be liable for any loss, damage or expense caused by such errors or omissions.

## East Anglia TWO

### East Anglia TWO and East Anglia ONE North Onshore Substation Zones

Drg No	EA1N-EA2-DEV-DRG-IBR-00TBC52	Coordinate System: BNG Datum: OSGB36
Rev	2	
Date	15/11/18	
Figure	4.7	







Legend

National Grid Substation

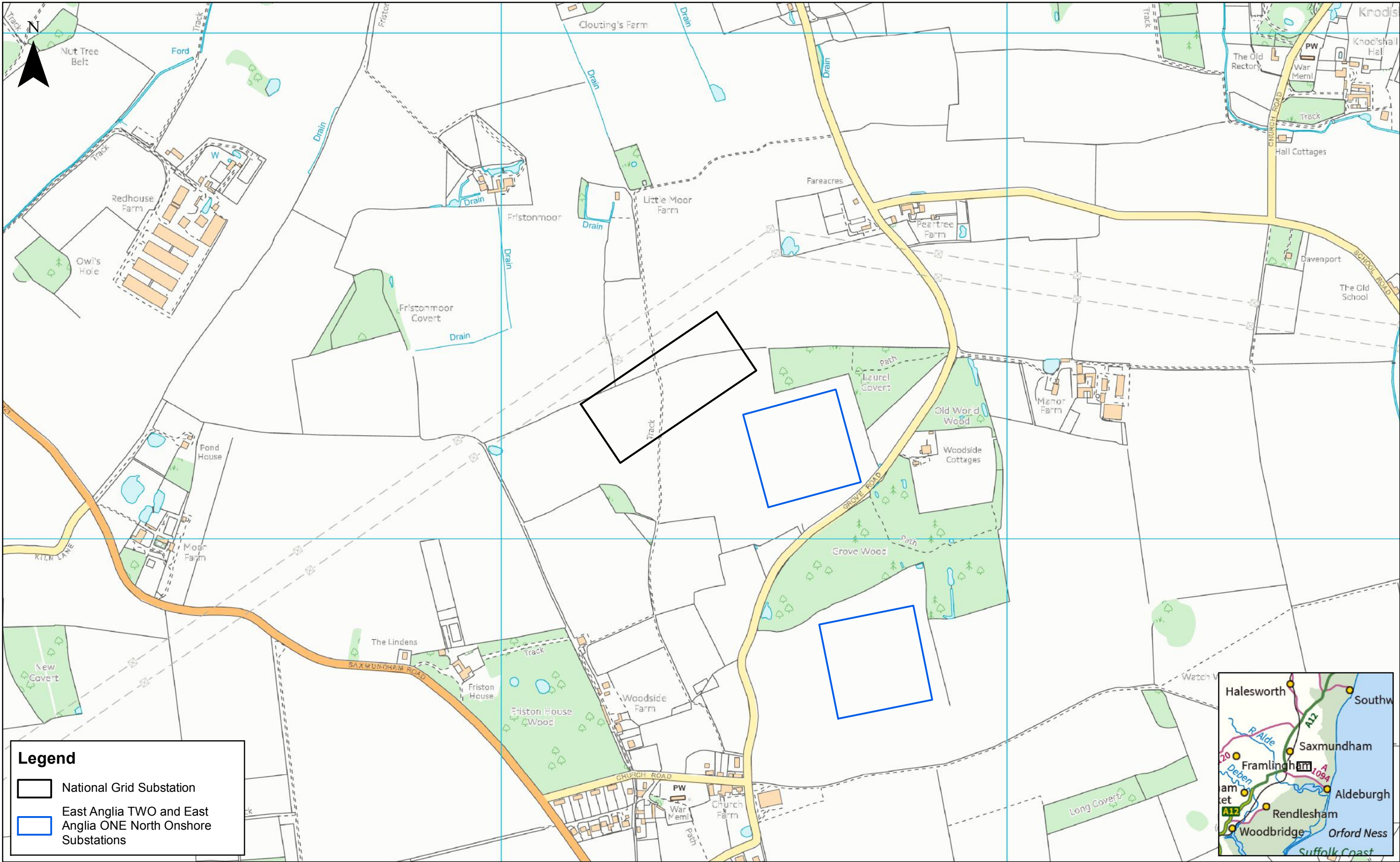
East Anglia TWO and East Anglia ONE North Onshore Substations


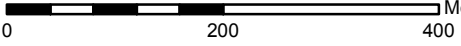
							1:7,000		<h1>East Anglia TWO</h1> <h2>East Anglia TWO and East Anglia ONE North Onshore Substation Zone 7 - Alternative Arrangement Option 1</h2>	<b>Drg No</b>	EA1N-EA2-DEV-DRG-IBR-00TBC61	
	2	15/11/2018	FC	Second Issue.	Prepared:	FC	Scale @ A3			<b>Rev</b>	2	Coordinate System: BNG Datum: OSGB36
	1	06/07/2018	FC	First Issue.	Checked:	PW	Source: © Crown copyright and database rights 2018. Ordnance Survey 0100031673. <small>This map has been produced to the latest known information at the time of issue, and has been produced for your information only. Please consult with the SPR Offshore GIS team to ensure the content is still current before using the information contained on this map. To the fullest extent permitted by law, we accept no responsibility or liability (whether in contract, tort (including negligence) or otherwise in respect of any errors or omissions in the information contained in the map and shall not be liable for any loss, damage or expense caused by such errors or omissions.</small>			<b>Date</b>	15/11/18	
	<b>Rev</b>	<b>Date</b>	<b>By</b>	<b>Comment</b>	<b>Approved:</b>	<b>AH</b>				<b>Figure</b>	4.8	



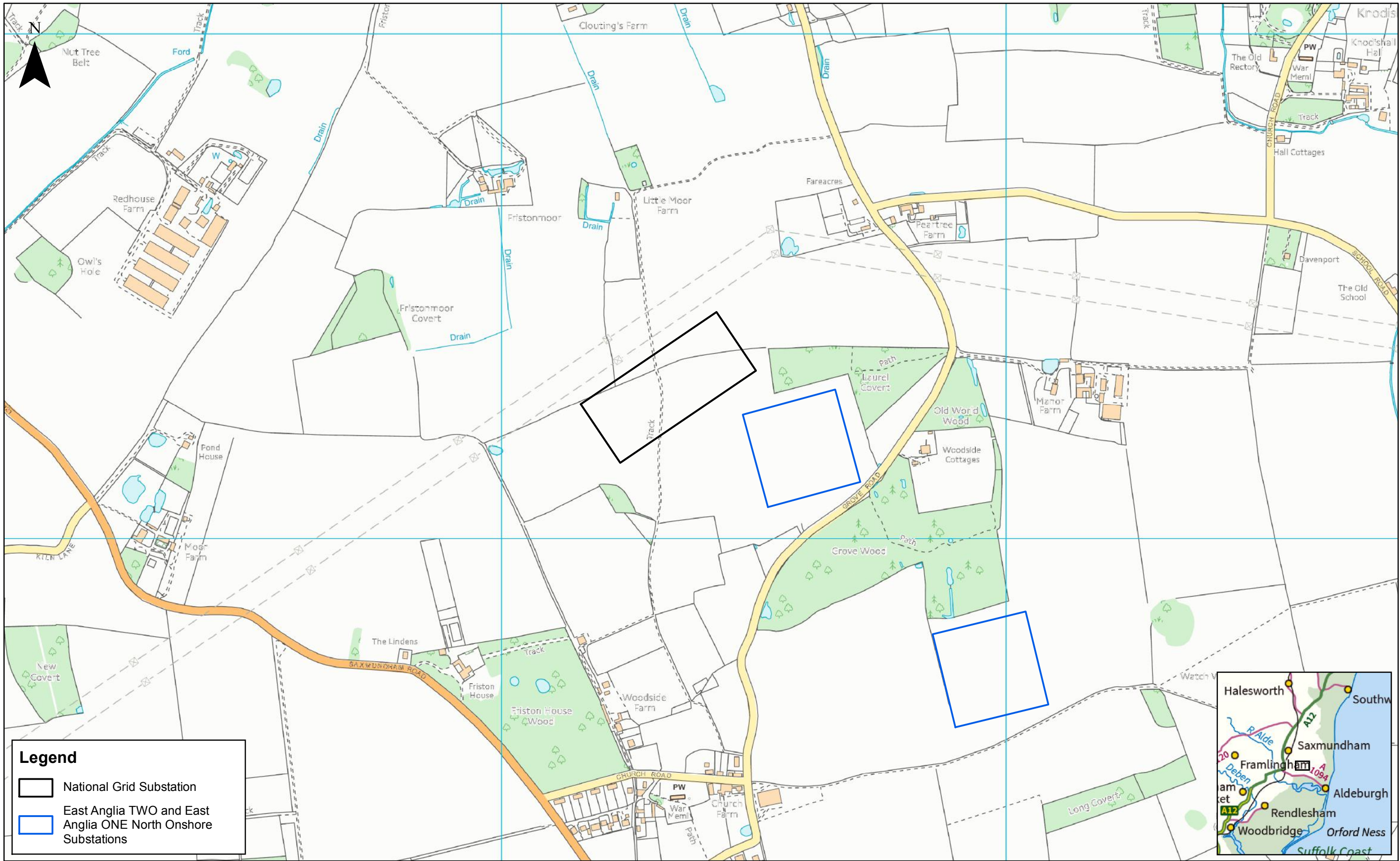






				1:7,000 Scale @ A3				<b>East Anglia TWO</b> East Anglia TWO and East Anglia ONE North Onshore Substation Zone 7 - Alternative Arrangement Option 3		<b>Drg No</b>	EA1N-EA2-DEV-DRG-IBR-00TBC63	
2	15/11/2018	FC	Second Issue.	Prepared:	FC	<small>This map has been produced to the latest known information at the time of issue, and has been produced for your information only. Please consult with the SPR Offshore GIS team to ensure the content is still current before using the information contained on this map. To the fullest extent permitted by law, we accept no responsibility or liability (whether in contract, tort (including negligence) or otherwise in respect of any errors or omissions in the information contained in the map and shall not be liable for any loss, damage or expense caused by such errors or omissions.</small>		<b>Rev</b>		<b>Rev</b>	2	Coordinate System: BNG Datum: OSGB36
1	06/07/2018	FC	First Issue.	Checked:	PW			<b>Date</b>		<b>Date</b>	15/11/18	
<b>Rev</b>	<b>Date</b>	<b>By</b>	<b>Comment</b>	<b>Approved:</b>	<b>AH</b>			<b>Figure</b>		<b>Figure</b>	4.10	







Legend

National Grid Substation

East Anglia TWO and East Anglia ONE North Onshore Substations

							1:7,000		<h1>East Anglia TWO</h1> <h2>East Anglia TWO and East Anglia ONE</h2> <h3>North Onshore Substation Zone 7 - Alternative Arrangement Option 4</h3>	<b>Drg No</b>	EA1N-EA2-DEV-DRG-IBR-00TBC64	
	2	15/11/2018	FC	Second Issue.	Prepared:	FC	Scale @ A3			<b>Rev</b>	2	Coordinate System: BNG Datum: OSGB36
	1	06/07/2018	FC	First Issue.	Checked:	PW	<small>Source: © Crown copyright and database rights 2018. Ordnance Survey 0100031673. This map has been produced to the latest known information at the time of issue, and has been produced for your information only. Please consult with the SPN's Offshore GIS team to ensure the content is still current before using the information contained on this map. To the fullest extent permitted by law, we accept no responsibility or liability (whether in contract, tort (including negligence) or otherwise in respect of any errors or omissions in the information contained in the map and shall not be liable for any loss, damage or expense caused by such errors or omissions.</small>	<b>Date</b>		15/11/18		
	<b>Rev</b>	<b>Date</b>	<b>By</b>	<b>Comment</b>	<b>Approved:</b>	AH	<b>Figure</b>	4.11				

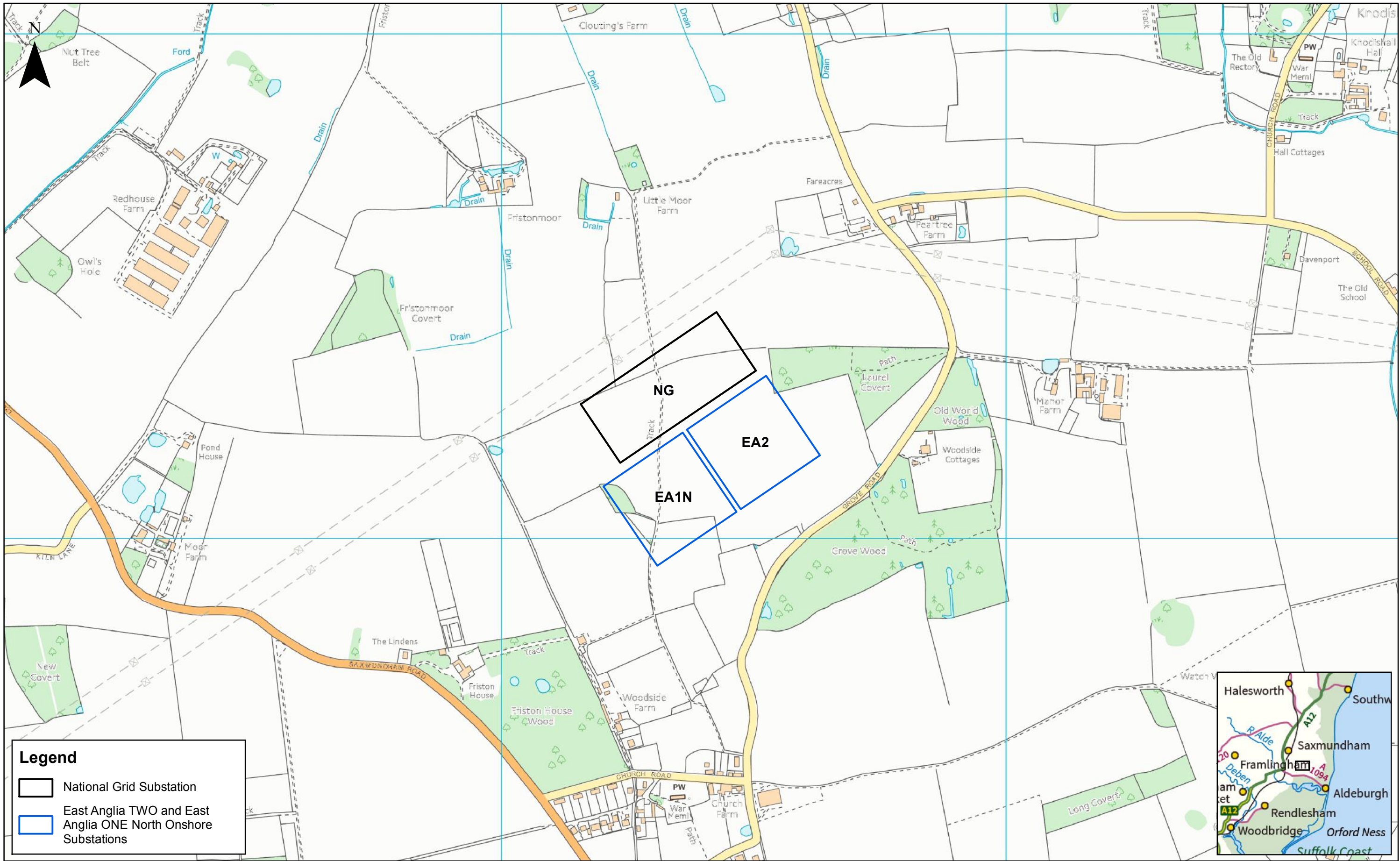











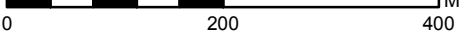


**Legend**

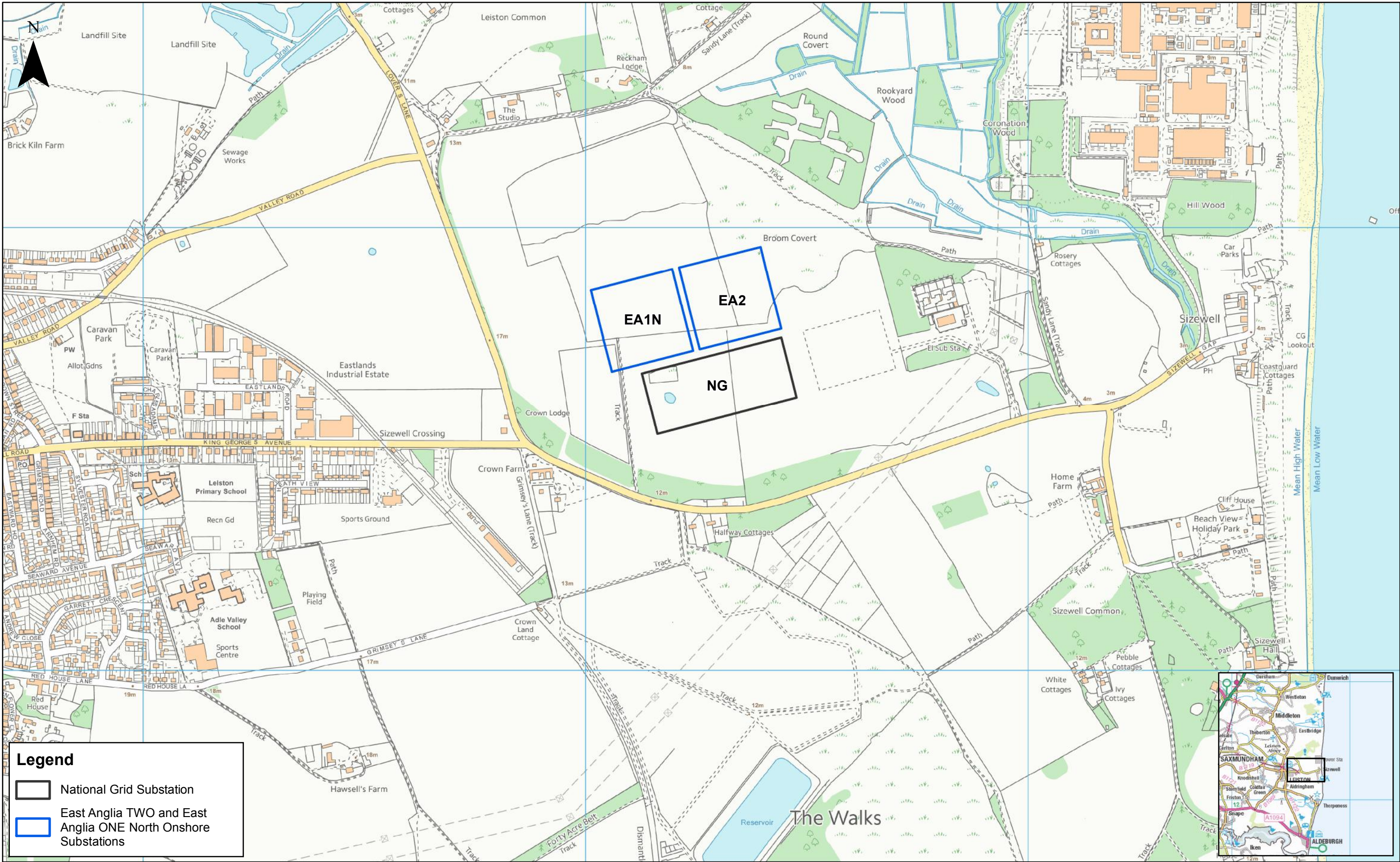
National Grid Substation

East Anglia TWO and East Anglia ONE North Onshore Substations



				1:7,000 Scale @ A3				<b>East Anglia TWO</b> Preferred Substation Arrangement within Substation Zone 7 (including NG substation)		<b>Drg No</b>	EA1N-EA2-DEV-DRG-IBR-00TBC54	
2	15/11/2018	FC	Second Issue.	Prepared:	FC	<small>Source: © Crown copyright and database rights 2018. Ordnance Survey 0100031673. This map has been produced to the latest known information at the time of issue, and has been produced for your information only. Please consult with the SPR Offshore GIS team to ensure the content is still current before using the information contained on this map. To the fullest extent permitted by law, we accept no responsibility or liability (whether in contract, tort (including negligence) or otherwise in respect of any errors or omissions in the information contained in the map and shall not be liable for any loss, damage or expense caused by such errors or omissions.</small>				<b>Rev</b>	2	Coordinate System: BNG Datum: OSGB36
1	06/07/2018	FC	First Issue.	Checked:	PW					<b>Date</b>	15/11/18	
<b>Rev</b>	<b>Date</b>	<b>By</b>	<b>Comment</b>	<b>Approved:</b>	AH					<b>Figure</b>	4.14	







Legend

National Grid Substation

East Anglia T2O and East Anglia ONE North Onshore Substations

							1:8,000		<b>East Anglia TWO</b> East Anglia TWO and East Anglia ONE North Onshore Substation Arrangement within Broom Covert, Sizewell (including NG substation)	<b>Drg No</b>	EA1N-EA2-DEV-DRG-IBR-00TBC303	
					Prepared:	FC	Scale @ A3			<b>Rev</b>	1	Coordinate System: BNG Datum: OSGB36
	1	15/11/2018	FC	First Issue.	Checked:	PW	<small>Source: © Crown copyright and database rights 2018. Ordnance Survey 0100031673. This map has been produced to the latest known information at the time of issue, and has been produced for your information only. Please consult with the SPN Offshore GIS team to ensure the content is still current before using the information contained on this map. To the fullest extent permitted by law, we accept no responsibility or liability (whether in contract, tort (including negligence) or otherwise in respect of any errors or omissions in the information contained in the map and shall not be liable for any loss, damage or expense caused by such errors or omissions.</small>			<b>Date</b>	15/11/18	
	<b>Rev</b>	<b>Date</b>	<b>By</b>	<b>Comment</b>	Approved:	AH				<b>Figure</b>	4.15	



**This page is intentionally blank**