



SCOTTISHPOWER
RENEWABLES

East Anglia TWO
East Anglia ONE North

Development of our Plans

July 2019

Development of our Plans



ScottishPower Renewables is developing windfarms off the coast of Suffolk and has consulted with local communities on its proposed East Anglia TWO and ONE North projects.

Development of our Plans

Forty-two public events were held throughout the consultation period and over 2,000 responses were received.

We'd like to thank everyone who took the opportunity to feedback on our proposals and we are now pleased to share some of the actions we have taken in response.



Protecting the Visual Landscape

Protecting the visual landscape around our substation site was a commonly raised matter, so we've added provision for more planted screening around the proposed substation site, using native plants and trees, and designated areas for early planting.

We are creating wildlife corridors between new and existing woodlands and we have further considered the footpath network around the site.

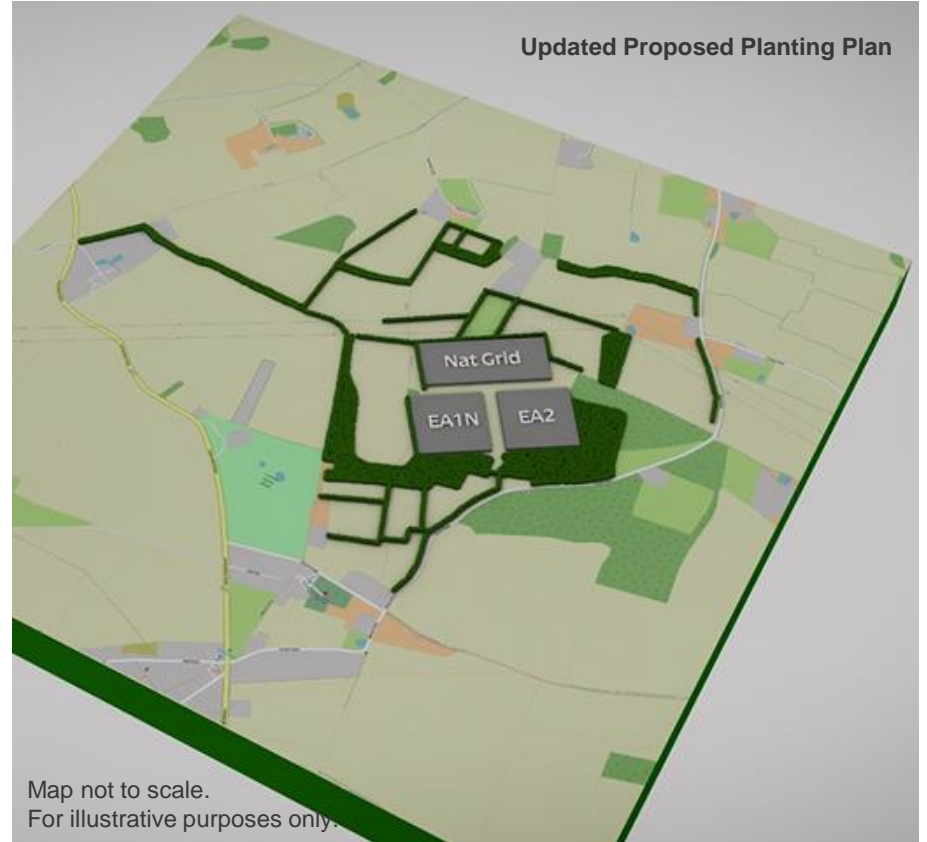
Protecting the Visual Landscape

Proposed Planting Plan at PEIR
(Phase 4/Section 42 Consultation)



Map not to scale.
For illustrative purposes only.

Updated Proposed Planting Plan



Map not to scale.
For illustrative purposes only.

Traffic and Transport

Traffic and transport was also commented on. To address this, we are no longer proposing to use the B1353 to access the Landfall site.



Traffic and Transport



Map not to scale.
For illustrative purposes only.

This has allowed us to remove the need to undertake physical works at the Aldeburgh roundabout from our plans.

Perhaps more importantly, we have managed to reduce the number of Heavy Goods Vehicle movements in this area from 55 to 10 a day.

Construction Compound Sites

Concerns were raised over the size of our construction compound sites so, following a review of our East Anglia ONE experience we are reducing these by 60%, including the removal of one site altogether.

This will also result in less works traffic needed for construction and reinstatement.

Construction Compound Sites

Proposed CCS layout at PEIR
(Phase 4/Section 42 Consultation)



Construction Compound Sites



Our proposed development area has been modified to:

- Remove a number of residential properties
- Minimise impact on sensitive wildlife in the Sandlings Special Protection Area
- Further limit the potential impact on farmland
- Avoid, where possible, sensitive archaeological sites

Proposed Development Site

Proposed Development Area at PEIR
(Phase 4/Section 42 Consultation)



Updated Proposed Development Area



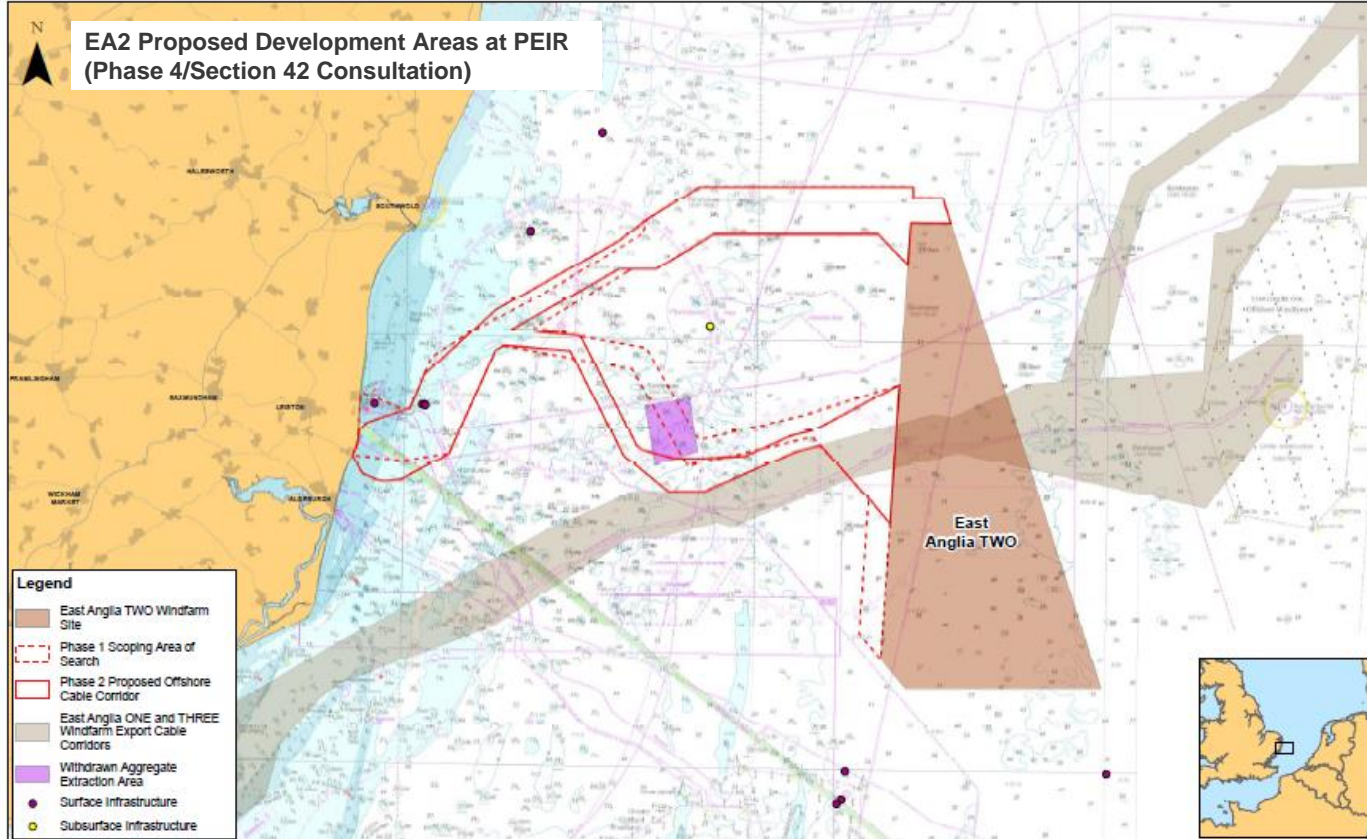
Maps not to scale.
For illustrative purposes only.

Land-to-Sea Visual Impact

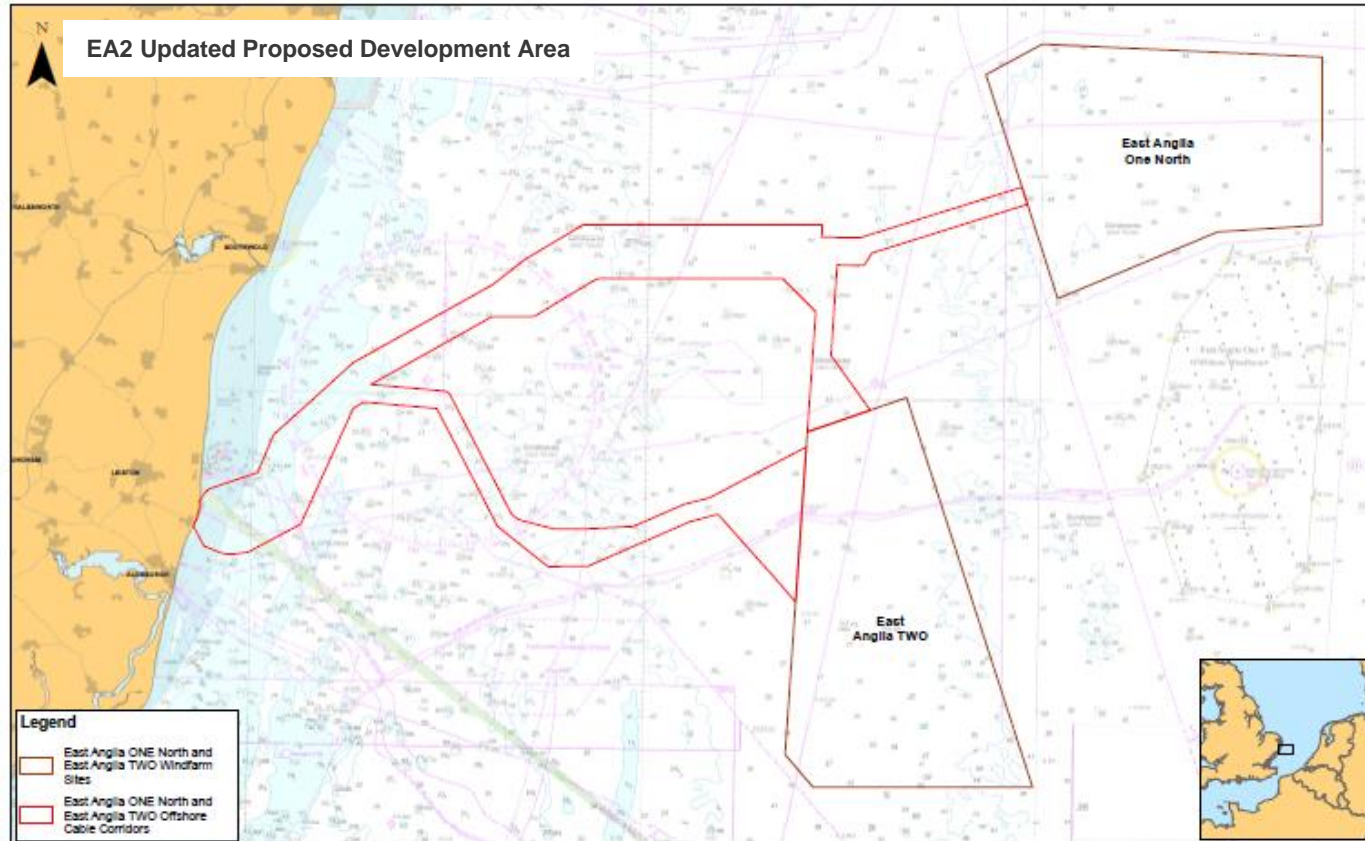
We have also acted on statutory stakeholder feedback on the land-to-sea visual impact assessment.

Our new turbine layout for East Anglia TWO will break up the view out to sea by effectively creating gaps between the two project development areas.

Land-to-Sea Visual Impact



Land-to-Sea Visual Impact



These are just some of the requested changes that we have acted on to bring this essential energy infrastructure project to fruition, whilst being mindful of your views.

This update is an overview of the changes we have made to date and, where your comments have been taken into account. The detail will be provided in the submission documentation that is currently being prepared.

The next point at which documents will be made publicly available will be following acceptance of the applications by the Planning Inspectorate, expected to be in late 2019.

Once accepted, all application documents will be made available to view and you will be able to register as an interested party to be kept informed of progress and opportunities to get involved in the examination of the application.



For more information
please visit our website

www.spreastanglia.co.uk



SCOTTISHPOWER
RENEWABLES