



**SCOTTISHPOWER**  
**RENEWABLES**



East Anglia TWO  
East Anglia ONE North

# Development of our Plans

August 2019



## Development of our Plans

---



ScottishPower Renewables is developing windfarms off the coast of Suffolk and has consulted with local communities on its proposed East Anglia TWO and ONE North projects.



## Development of our Plans

---

Forty-two public events were held throughout the consultation period and over 2,000 responses were received.

We'd like to thank everyone who took the opportunity to feedback on our proposals and we are now pleased to share some of the actions we have taken in response.





Following PEIR consultation, a review of consultation feedback and additional data is being undertaken to refine the development area, including:

- Community feedback
- Landowner feedback
- Ecological designations and recreational assets
- Results from the archaeological geophysical survey
- National Grid infrastructure design work
- Substation drainage proposals
- Landscaping mitigation proposals
- Ecological mitigation proposals
- Access requirement
- Project design parameters and programme refinements



# Proposed Development Area

All maps presented  
© Crown copyright and  
database rights 2018.  
Ordnance Survey  
0100031673



## Development of our Plans

---

The following provides a summary of how information gathered to date has helped to refine the onshore development area further.

### Onshore Ecology and Recreational Features

- Aligning to field boundaries during construction
- Requests to reroute the cable corridor from residential properties (in some instances)
- Requests to re-locate Construction Consolidation Sites (CCSs) from residential properties (in some instances)
- Requests to reduce the size (footprint) of CCSs
- Committing to working outside a 200m buffer of the Sandlings Special Protection Area, where possible.
- No above ground interaction with Thorpeness Common or the public right of way (PRoW) along the edge of the cliff.
- The typical onshore cable route width of 32m will be reduced to 16.1m when crossing important hedgerows, where possible.
- The typical onshore cable route width of 32m will be reduced to 16.1m when passing through woodland north of Fitches Lane and north of Gypsy Lane (Aldringham), where possible



## Onshore Archaeology and Cultural Heritage

- Avoiding direct physical impacts on designated heritage assets by onshore cable corridor refinement;
- Avoiding direct physical impacts on non-designated above ground heritage assets by onshore cable corridor refinement;
- Avoiding direct physical impacts on potential sub-surface archaeological remains by onshore cable corridor refinement; and
- Widening of the onshore development area at certain locations to allow additional flexibility during detailed design and construction to avoid impacts on buried archaeology identified during post-consent archaeological investigations.



# Proposed Development Site

---

Proposed Development Area at PEIR  
(Phase 4/Section 42 Consultation)



Updated Proposed Development Area










Maps not to scale.  
For illustrative purposes only.



**Onshore Development Area**

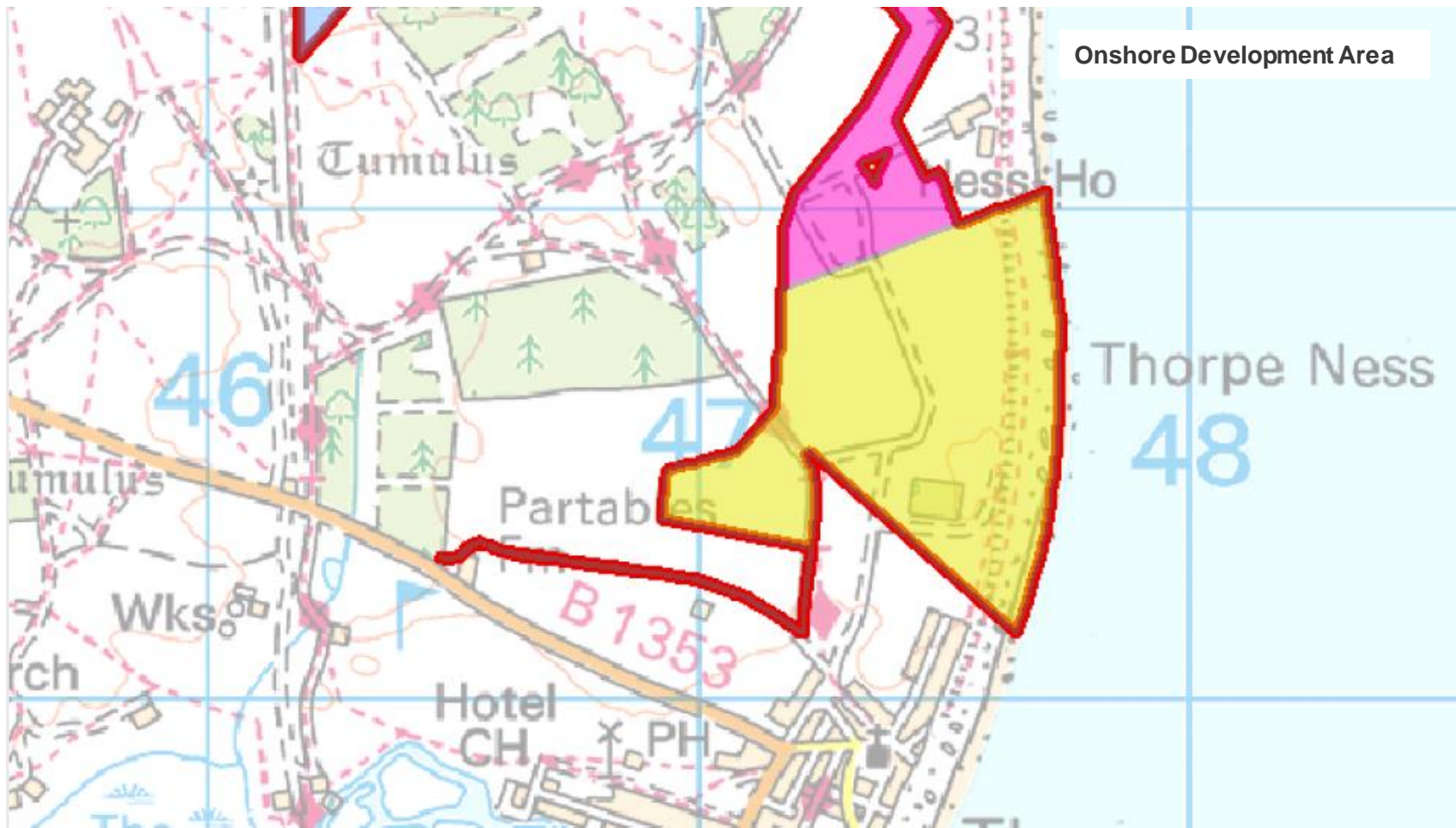
**Legend**

- Onshore Development Area
- Landfall
- Section 1
- Section 2
- Section 3
- Section 4
- Onshore Substation and National Grid Infrastructure

 Onshore Development Area  
 Landfall  
 Section 1  
 Section 2  
 Section 3  
 Section 4  
 Onshore Substation and National Grid Infrastructure

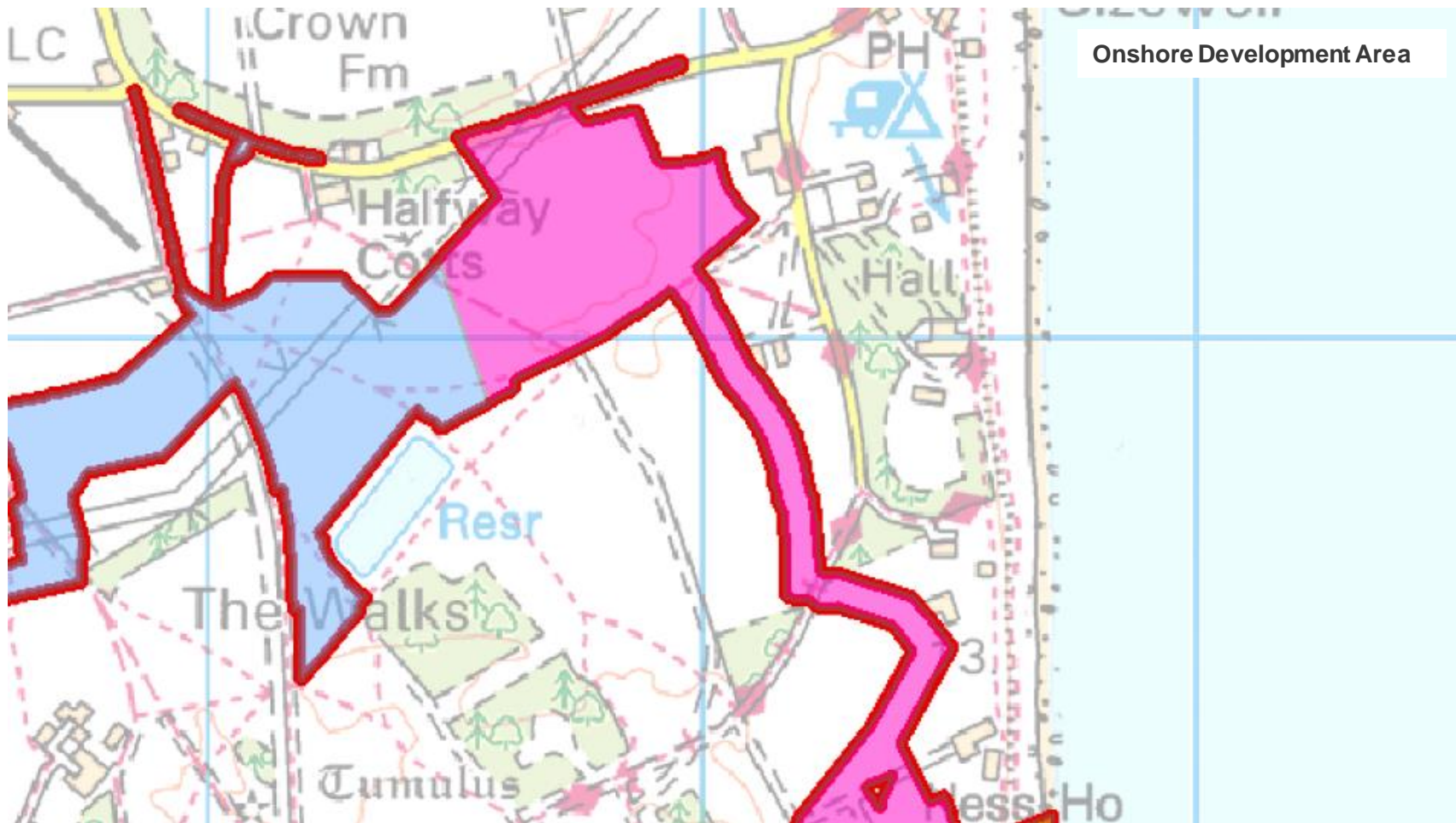






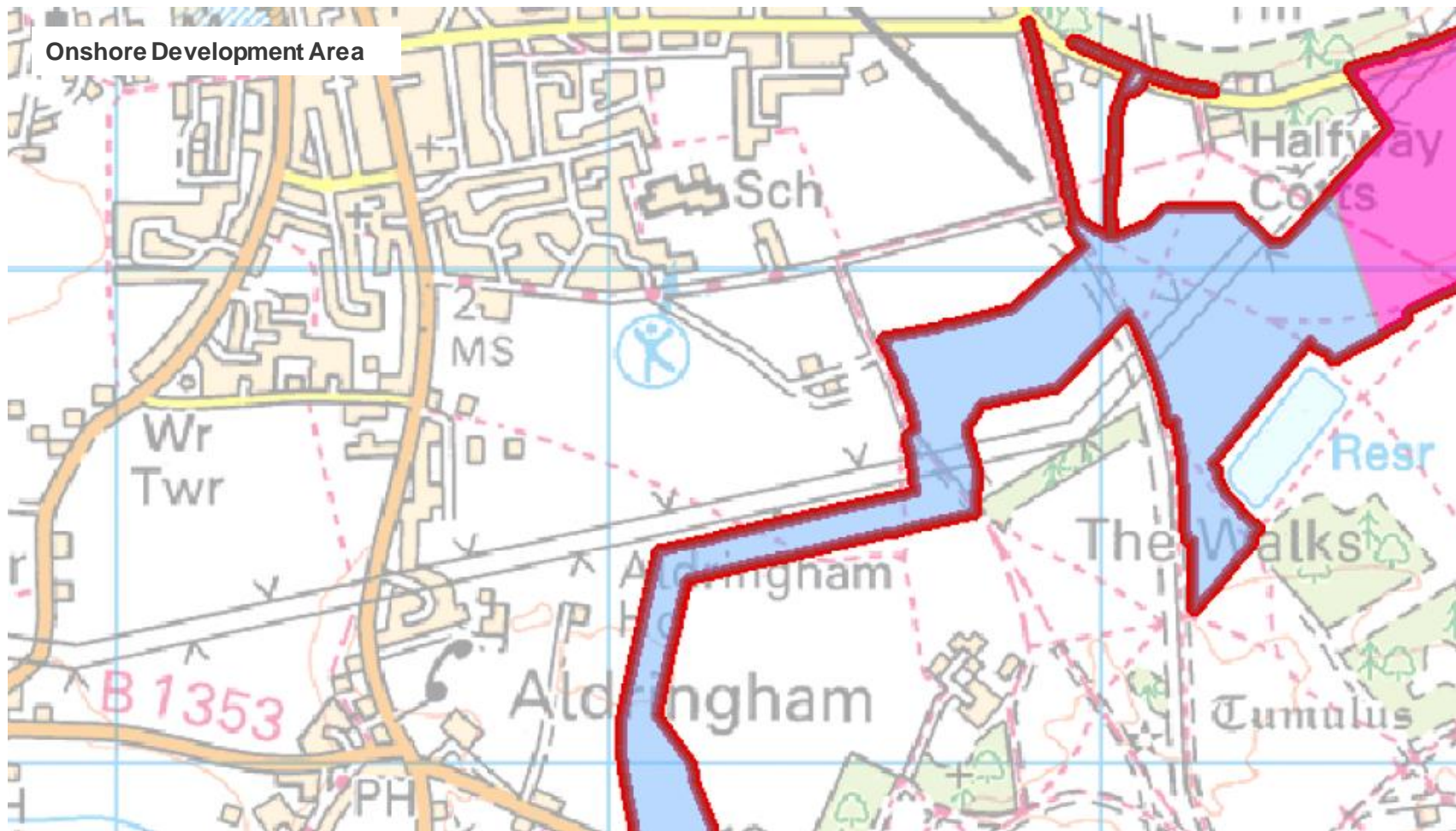
Onshore Development Area





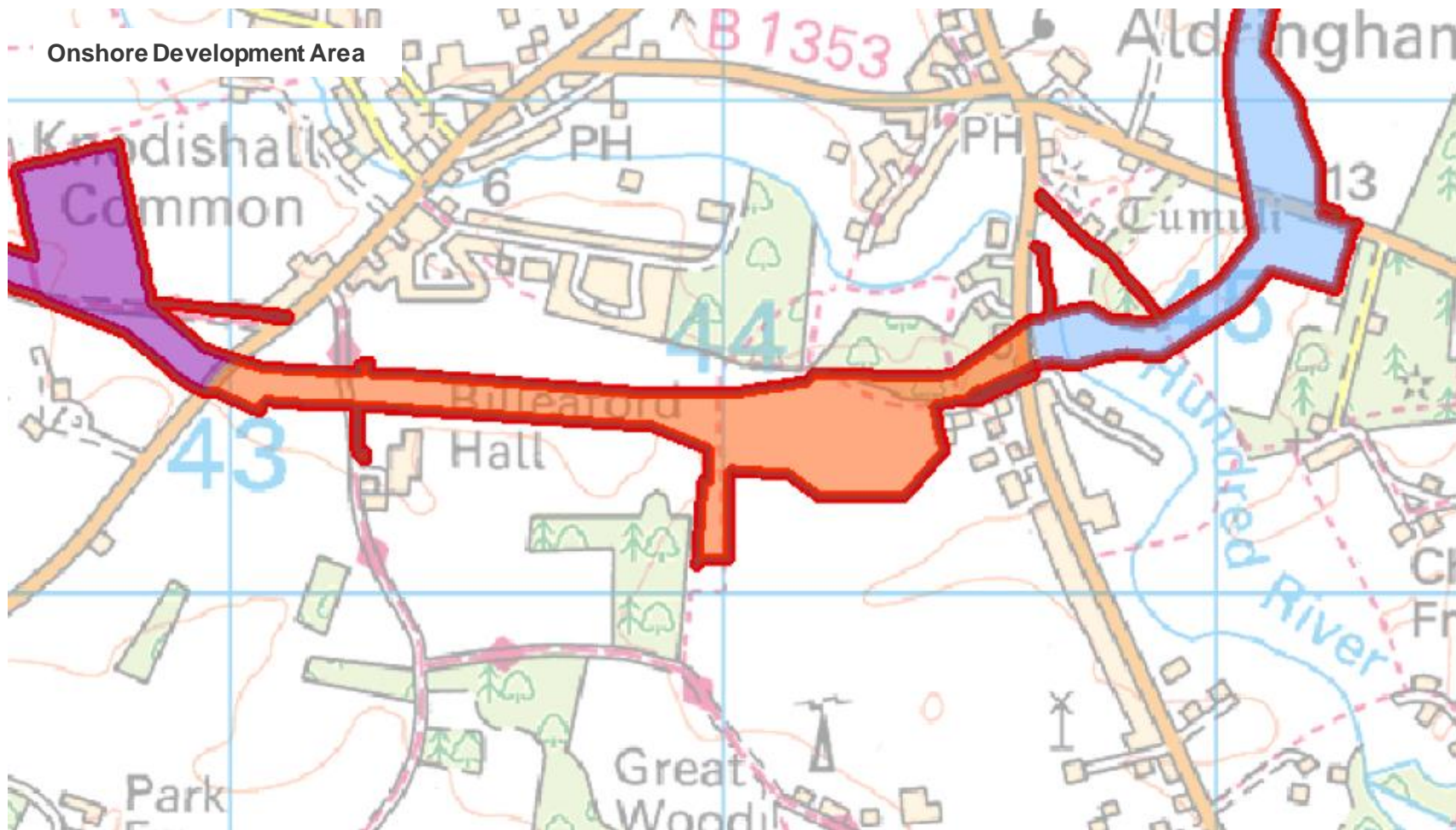


Onshore Development Area



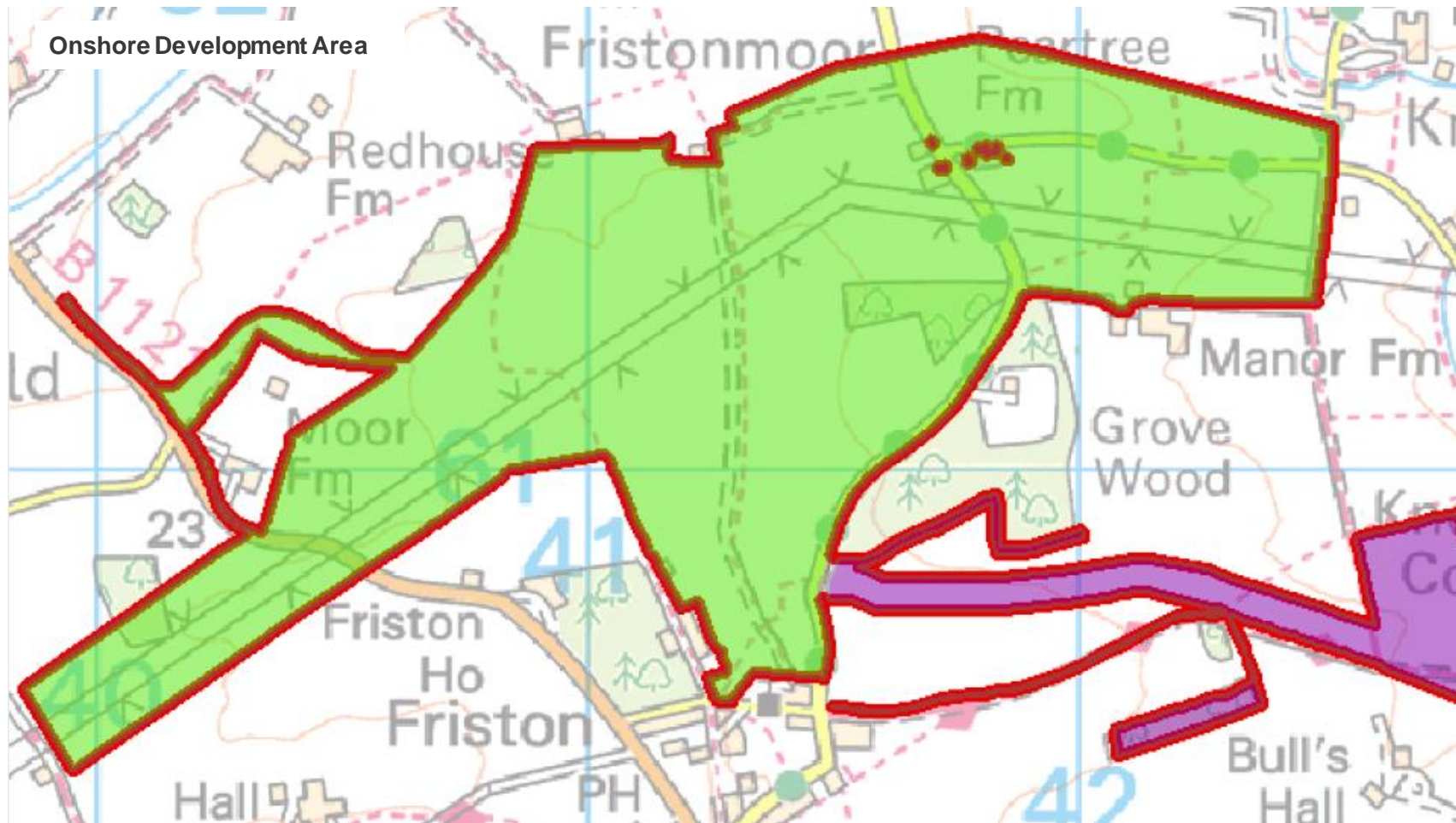


Onshore Development Area





## Onshore Development Area





## Proposed Development Site - Construction Compound Sites

---

Concerns were raised over the size of our construction compound sites so, following a review of our East Anglia ONE experience, we are reducing these by 60%, including the removal of one site altogether.

This will also result in less works traffic needed for construction and reinstatement.



# Proposed Development Site - Construction Compound Sites

Proposed CCS layout at PEIR  
(Phase 4/Section 42 Consultation)









# Construction Timings



Further review and feedback has also enabled us to:

- Reduce Saturday working hours from 7am to 7pm to 7am to 1pm. Other construction activities will continue as previously proposed:
  - During weekday working hours of 7am to 7pm
  - Working hours are not proposed for Sundays or Bank Holidays
  - Exceptions to these working hours for the works would be for specific time critical activities, such as horizontal directional drill (HDD)
- Reduce the construction programme at the landfall (Thorpeness) from 20 to 12 months. A construction programme will be available within the final submission documents.



# Traffic and Transport

All maps presented  
© Crown copyright and  
database rights 2018.  
Ordnance Survey  
0100031673



## Traffic and Transport

Traffic and transport was also commented on. To address this, we are no longer proposing to use the B1353 to access the Landfall site.







Map not to scale.  
For illustrative purposes only.

This has allowed us to remove the need to undertake physical works at the Aldeburgh roundabout from our plans.

Perhaps more importantly, we have managed to reduce the number of Heavy Goods Vehicle movements in this area from 55 to 10 a day.



# Protecting the Visual Landscape

All maps presented  
© Crown copyright and  
database rights 2018.  
Ordnance Survey  
0100031673



## Protecting the Visual Landscape

---

Protecting the visual landscape around our substation site was a commonly raised matter, so we've added provision for more planted screening around the proposed substation site, using native plants and trees, and designated areas for early planting.

We are creating wildlife corridors between new and existing woodlands and we have further considered the footpath network around the site.



# Protecting the Visual Landscape

Proposed Planting Plan at PEIR  
(Phase 4/Section 42 Consultation)



Updated Proposed Planting Plan





# Land-to-Sea Visual Impact

All maps presented  
© Crown copyright and  
database rights 2018.  
Ordnance Survey  
0100031673



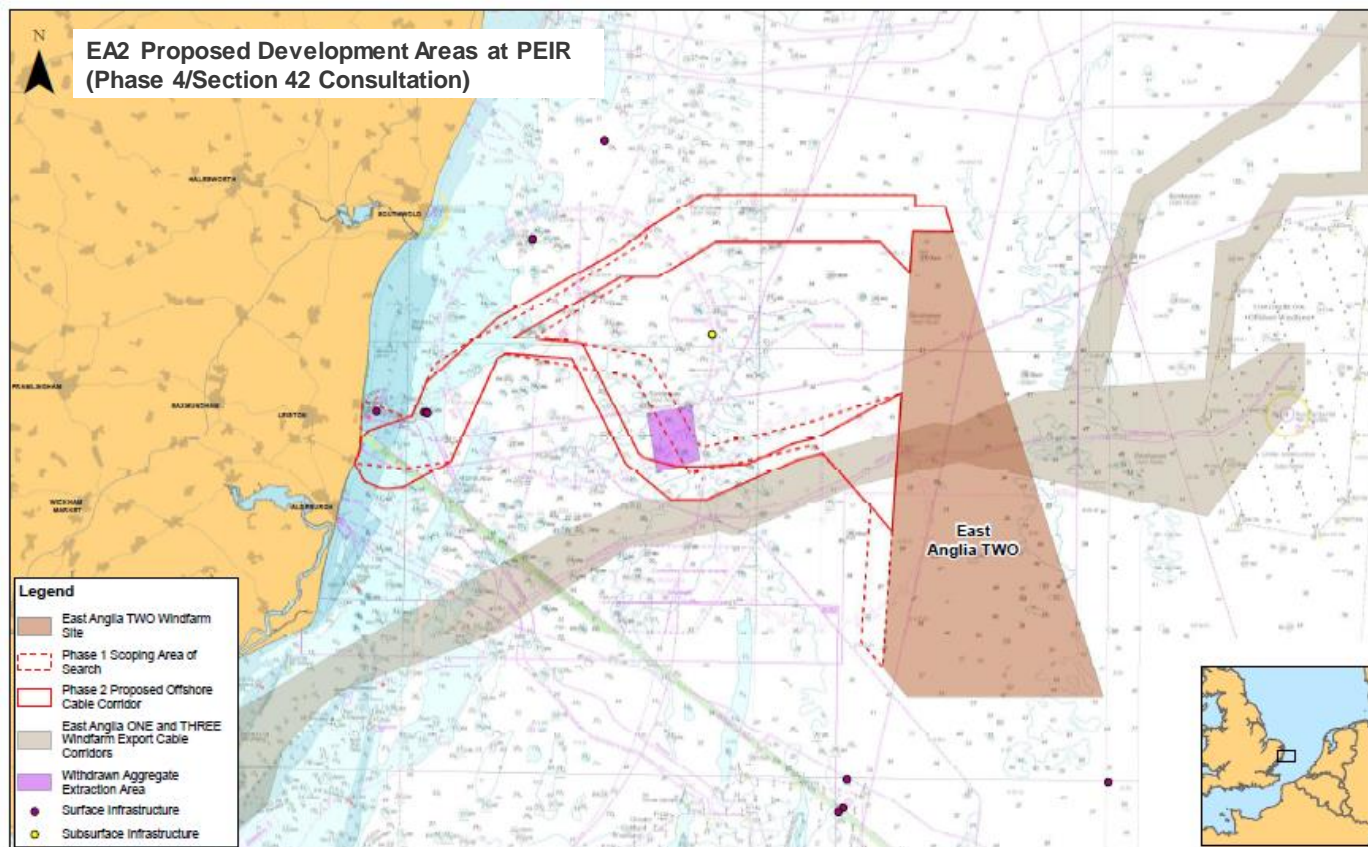
We have also acted on statutory stakeholder feedback on the land-to-sea visual impact assessment.

Our new turbine layout for East Anglia TWO will:

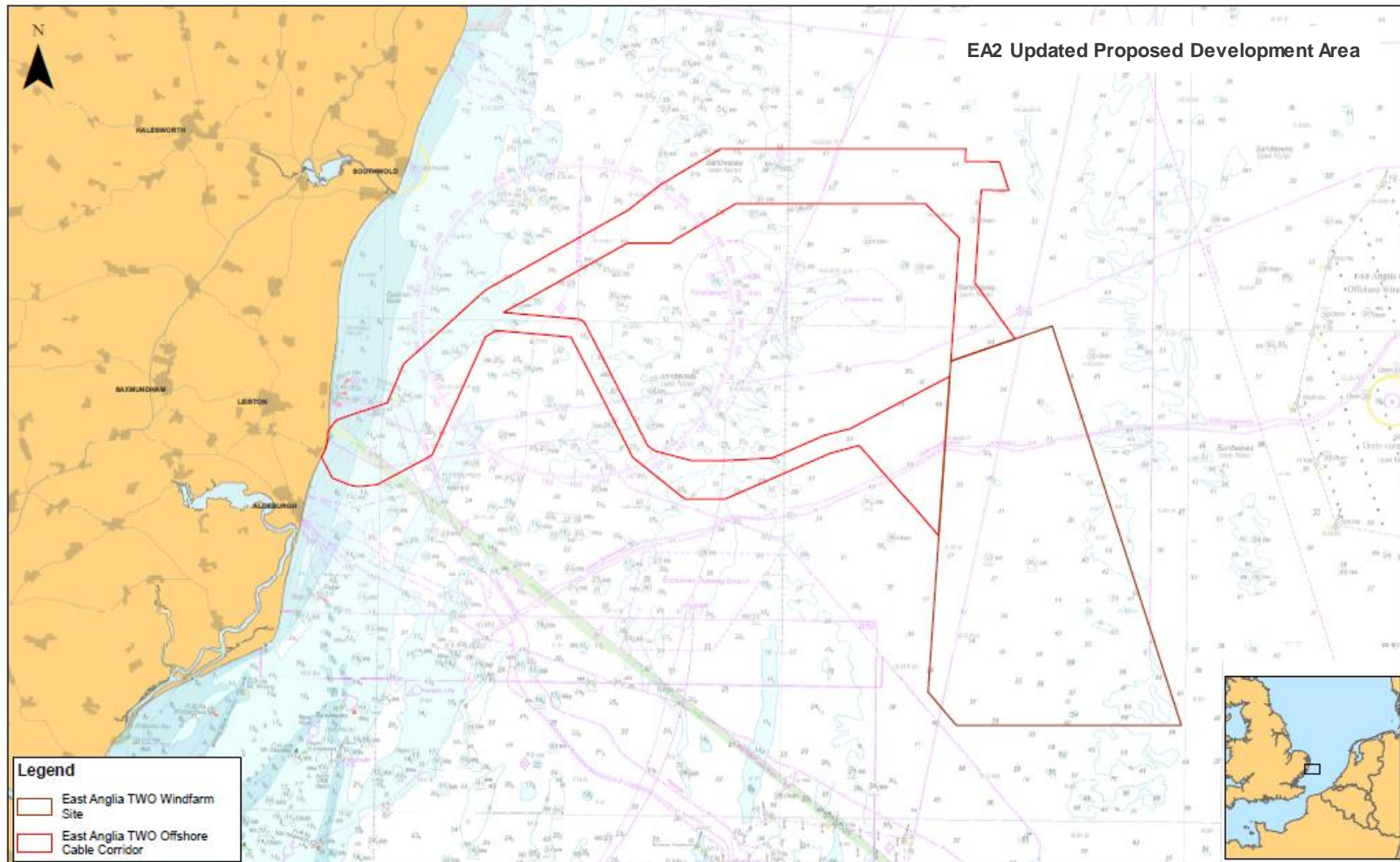
- Reduce concentrated grouping of turbines within the East Anglia TWO windfarm site.
- Increase the distance offshore for the viewpoints to the north of the Suffolk Coast and Heaths AONB (e.g. 3km further at Covehithe; 2km further at Southwold).
- Reduce the ‘curtaining’ effect by increasing the open sea horizon or ‘gap’ between East Anglia TWO and East Anglia ONE North windfarm sites (rather than cumulatively visually merging to form one larger array).
- Increase the distance of the East Anglia TWO windfarm site from the Outer Thames Estuary SPA.



# Land-to-Sea Visual Impact









These are just some of the requested changes that we have acted on to bring this essential energy infrastructure project to fruition, whilst being mindful of your views.



This update is an overview of the changes we have made to date and, where your comments have been taken into account. The detail will be provided in the submission documentation that is currently being prepared.

The next point at which documents will be made publicly available will be following acceptance of the applications by the Planning Inspectorate, expected to be in late 2019.

Once accepted, all application documents will be made available to view and you will be able to register as an interested party to be kept informed of progress and opportunities to get involved in the examination of the application.





For more information  
please visit our website

[www.spreastanglia.co.uk](http://www.spreastanglia.co.uk)





**SCOTTISHPOWER**  
**RENEWABLES**