

East Anglia ONE North Offshore Windfarm

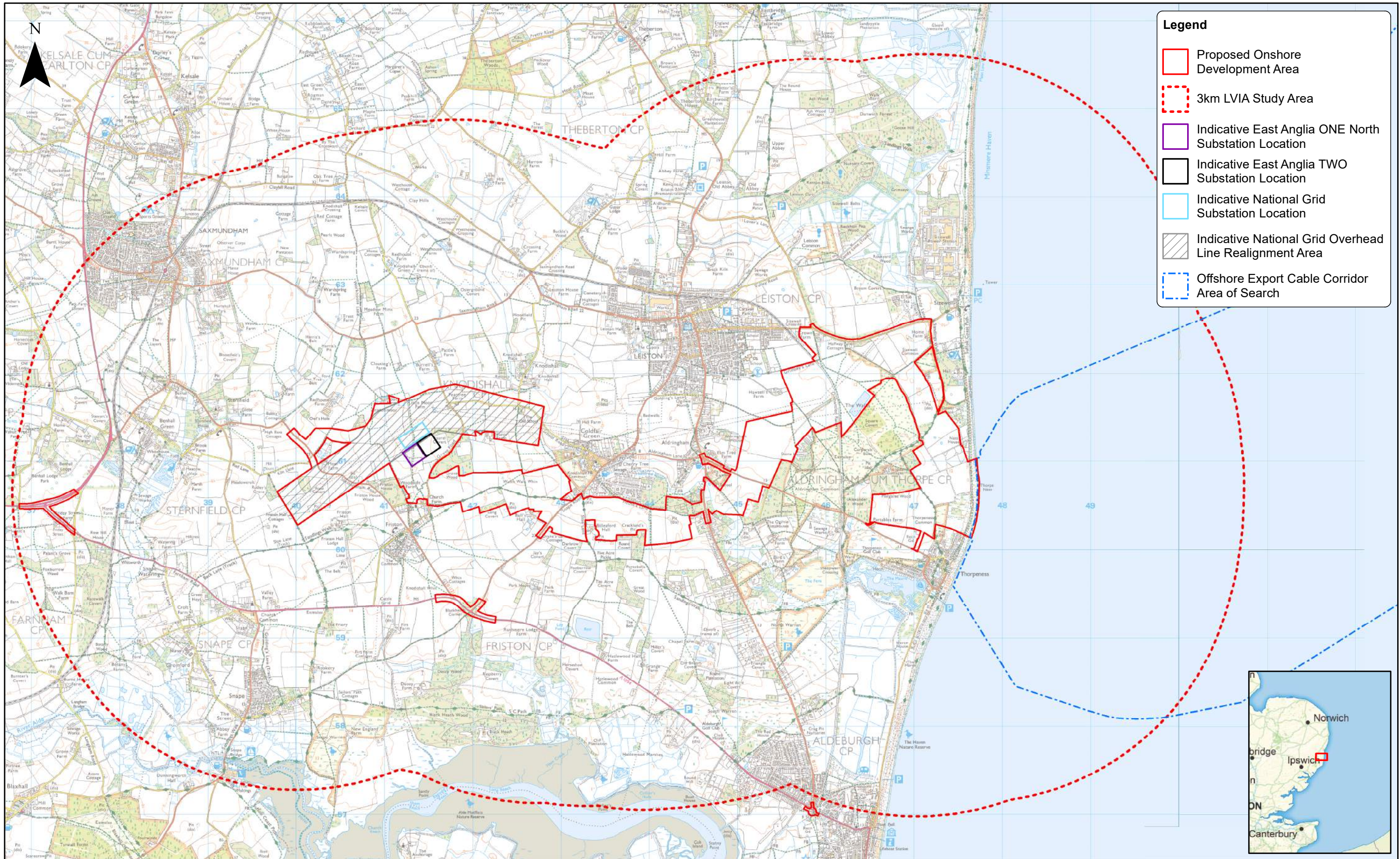
Chapter 29



Landscape and Visual Impact

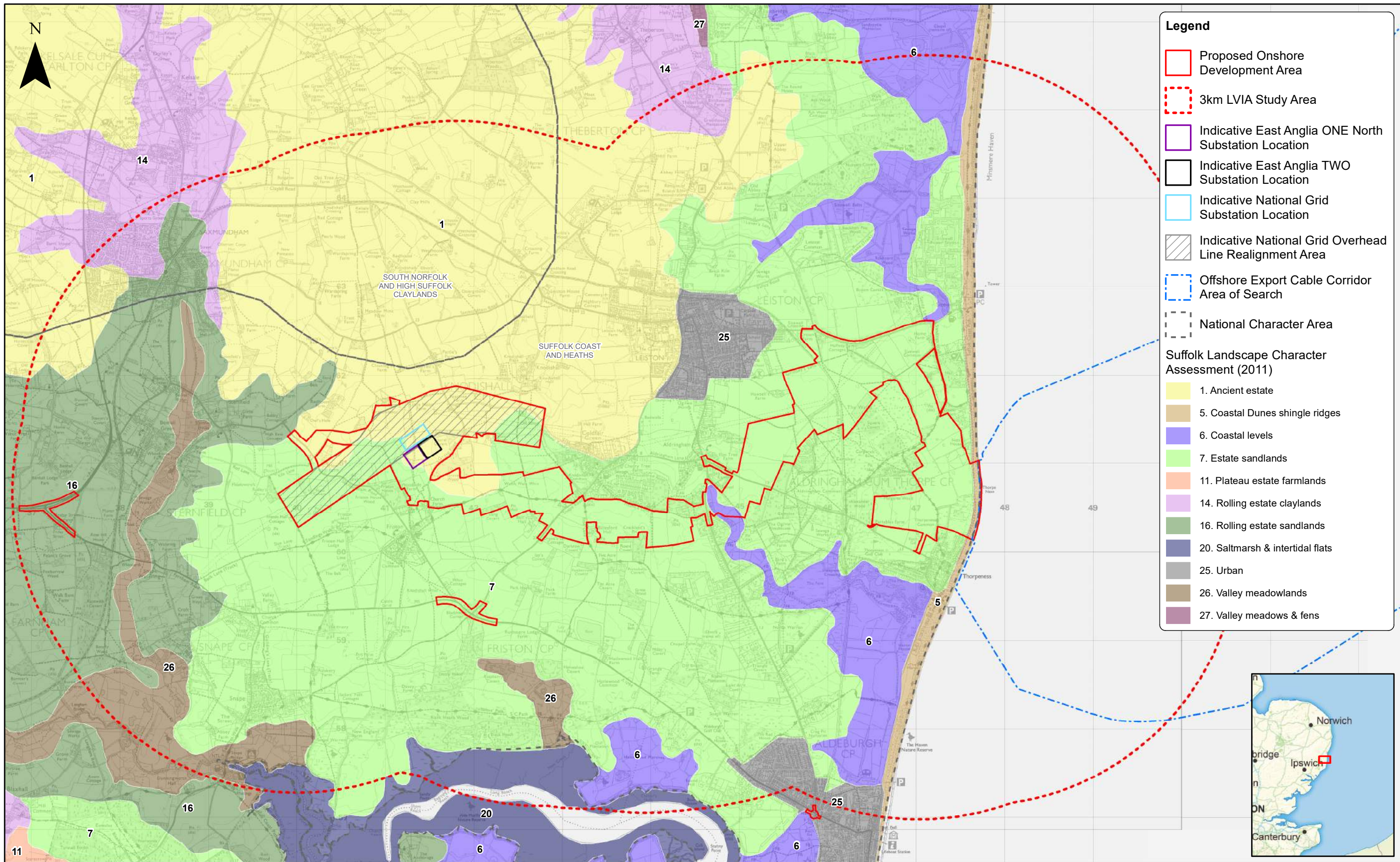
Figures



Preliminary Environmental Information
Volume 2

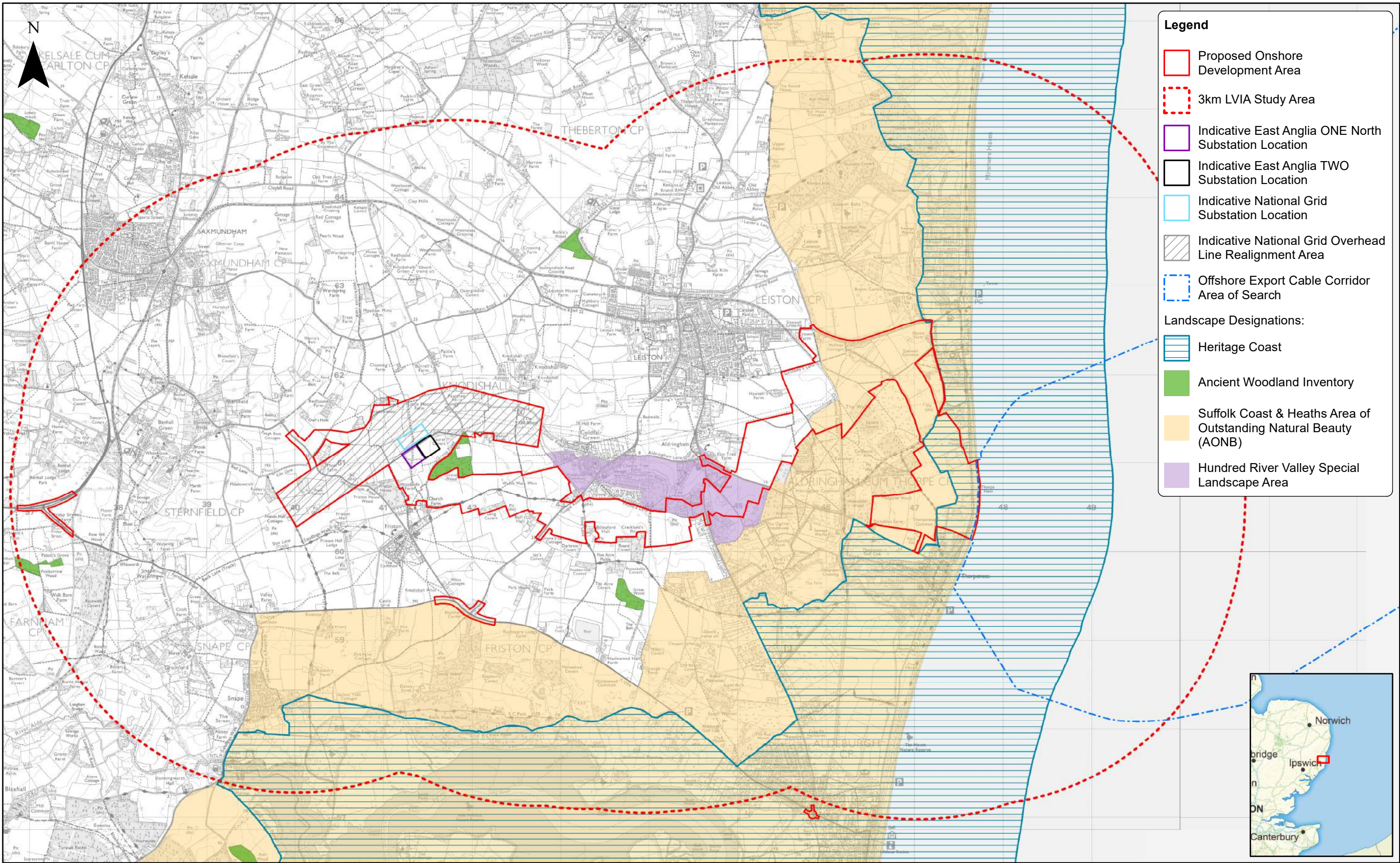
This page is intentionally blank





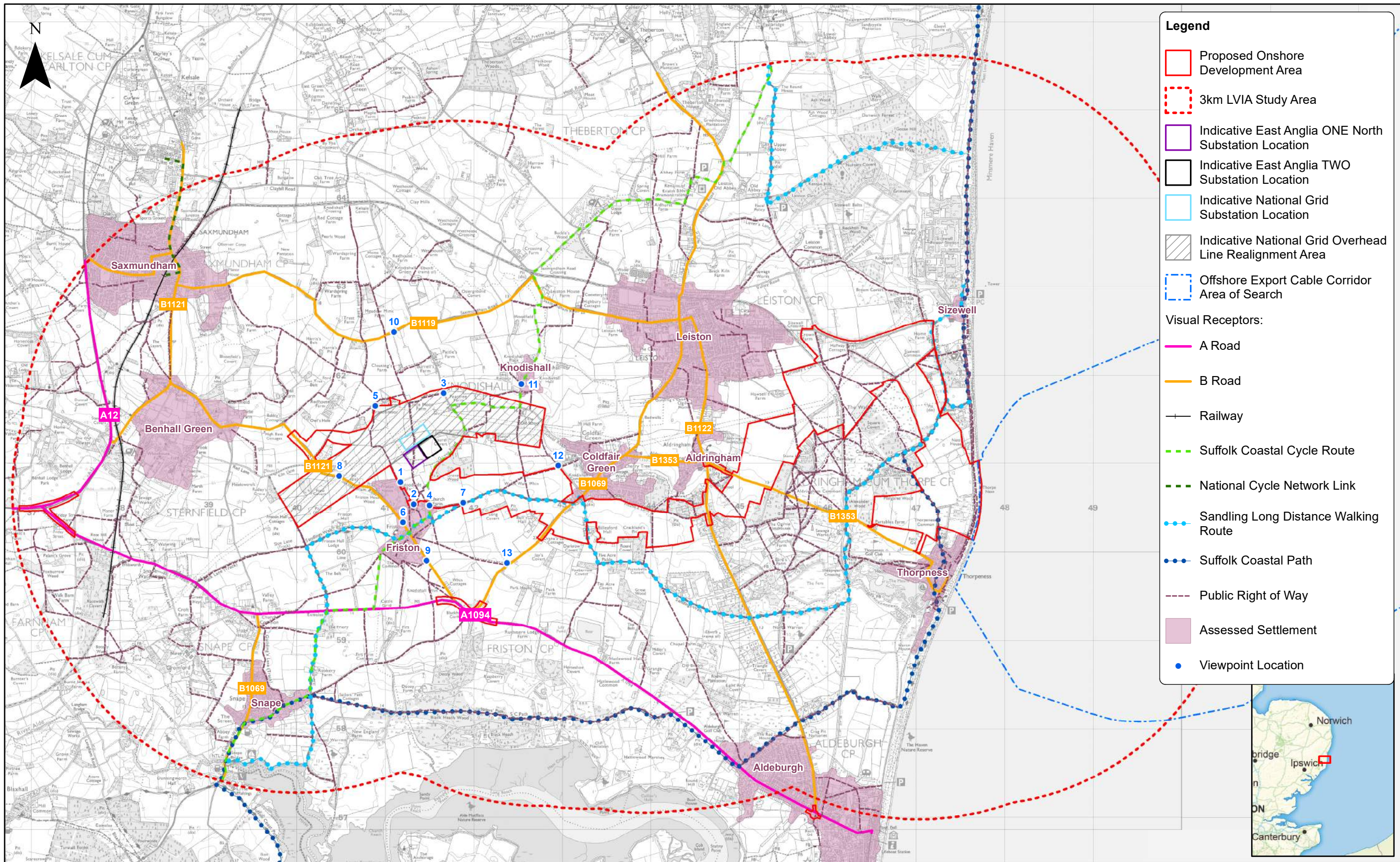
	3	17/01/2019	TH	Document Reference Update			1:40,000		East Anglia ONE North LVIA Study Area	Doc Ref	EA1N-DEVWF-ENV-REP-IBR-000298	
	2	06/12/2018	LA	Second Issue (OPEN)	Prepared:	LA	Scale @ A3			Rev	3	Datum: OSGB 1936 Projection: BNG
	1	23/11/2018	LA	First Issue (OPEN)	Checked:	SM	<small>This map has been produced to the latest known information at the time of issue, and has been produced for your information only. Please consult with the SPR Offshore GIS team to ensure the content is still current before using the information contained on this map. To the fullest extent permitted by law, we accept no responsibility or liability (whether in contract, tort (including negligence) or otherwise in respect of any errors or omissions in the information contained in the map and shall not be liable for any loss, damage or expense caused by such errors or omissions. Contains Ordnance Survey digital data. © Crown copyright. All rights reserved 2018 Licence number 0100031673.</small>			Date	17/01/19	
	Rev	Date	By	Comment	Approved:	LT				Figure	29.1	





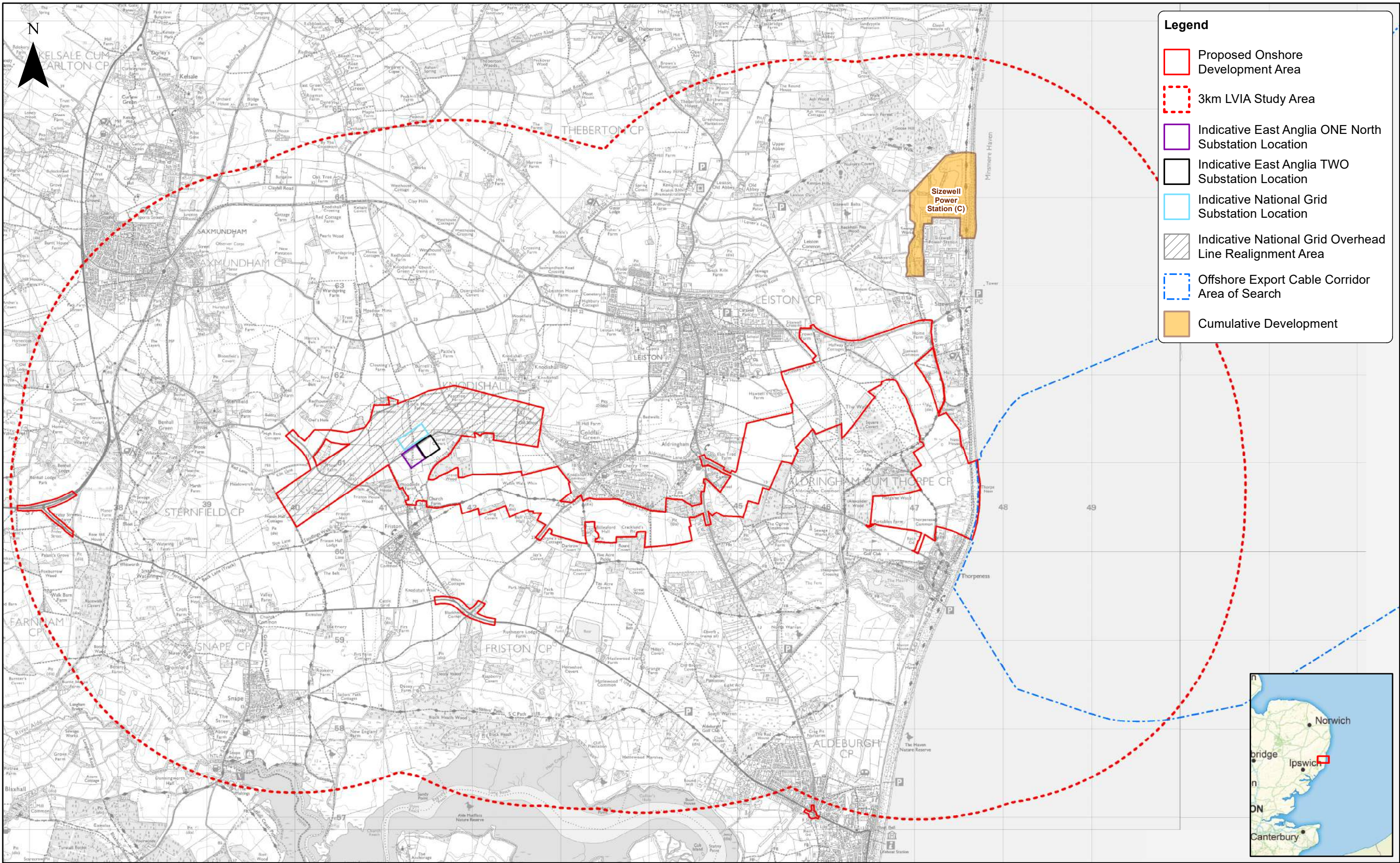
	3	17/01/2019	TH	Document Reference Update			1:40,000 Scale @ A3		<h1>East Anglia ONE North</h1> <h2>Landscape Character</h2>	Doc Ref	EA1N-DEVWF-ENV-REP-IBR-000298	
	2	06/12/2018	LA	Second Issue (OPEN)	Prepared:	LA				Rev	3	Datum: OSGB 1936 Projection: BNG
	1	23/11/2018	LA	First Issue (OPEN)	Checked:	SM	Date	17/01/19				
	Rev	Date	By	Comment	Approved:	LT	Figure	29.2				
	<small>This map has been produced to the latest known information at the time of issue, and has been produced for your information only. Please consult with the SPN Offshore GIS team to ensure the content is still current before using the information contained on this map. To the fullest extent permitted by law, we accept no responsibility or liability (whether in contract, tort (including negligence) or otherwise in respect of any errors or omissions in the information contained in the map and shall not be liable for any loss, damage or expense caused by such errors or omissions. Contains Ordnance Survey digital data. © Crown copyright. All rights reserved 2018 Licence number 0100031673. Contains, or is based on, information supplied by Natural England.</small>											



	3	17/01/2019	TH	Document Reference Update			1:40,000 Scale @ A3		<h1>East Anglia ONE North</h1> <h2>Landscape Designations</h2>	Doc Ref EA1N-DEVWF-ENV-REP-IBR-000298		
	2	06/12/2018	LA	Second Issue (OPEN)	Prepared: LA					Rev3	Datum: OSGB 1936	
	1	23/11/2018	LA	First Issue (OPEN)	Checked: SM		Date17/01/19	Projection: BNG				
	Rev	Date	By	Comment	Approved: LT		Figure29.3					
	<p><small>This map has been produced to the latest known information at the time of issue, and has been produced for your information only. Please consult with the SPR Offshore GIS team to ensure the content is still current before using the information contained on this map. To the fullest extent permitted by law, we accept no responsibility or liability (whether in contract, tort (including negligence) or otherwise) in respect of any errors or omissions in the information contained in the map and shall not be liable for any loss, damage or expense caused by such errors or omissions.</small></p> <p><small>Contains Ordnance Survey digital data. © Crown copyright. All rights reserved 2018 Licence number 0100031673. Contains, or is based on, information supplied by Natural England 2017. © Historic England 2017.</small></p>											



	3	17/01/2019	TH	Document Reference Update			1:40,000 Scale @ A3		<h1>East Anglia ONE North</h1> <h2>Visual Receptors</h2>	Doc Ref		EA1N-DEVWF-ENV-REP-IBR-000298	
	2	06/12/2018	LA	Second Issue (OPEN)	Prepared:	LA				Rev		3	Datum: OSGB 1936 Projection: BNG
	1	23/11/2018	LA	First Issue (OPEN)	Checked:	SM	Date			17/01/19			
	Rev	Date	By	Comment	Approved:	LT	Figure			29.4			
								This map has been produced to the latest known information at the time of issue, and has been produced for your information only. Please consult with the SPN Offshore GIS team to ensure the content is still current before using the information contained on this map. To the fullest extent permitted by law, we accept no responsibility or liability (whether in contract, tort (including negligence) or otherwise in respect of any errors or omissions in the information contained in the map and shall not be liable for any loss, damage or expense caused by such errors or omissions. Contains Ordnance Survey digital data. © Crown copyright. All rights reserved 2018 Licence number 0100031673.					



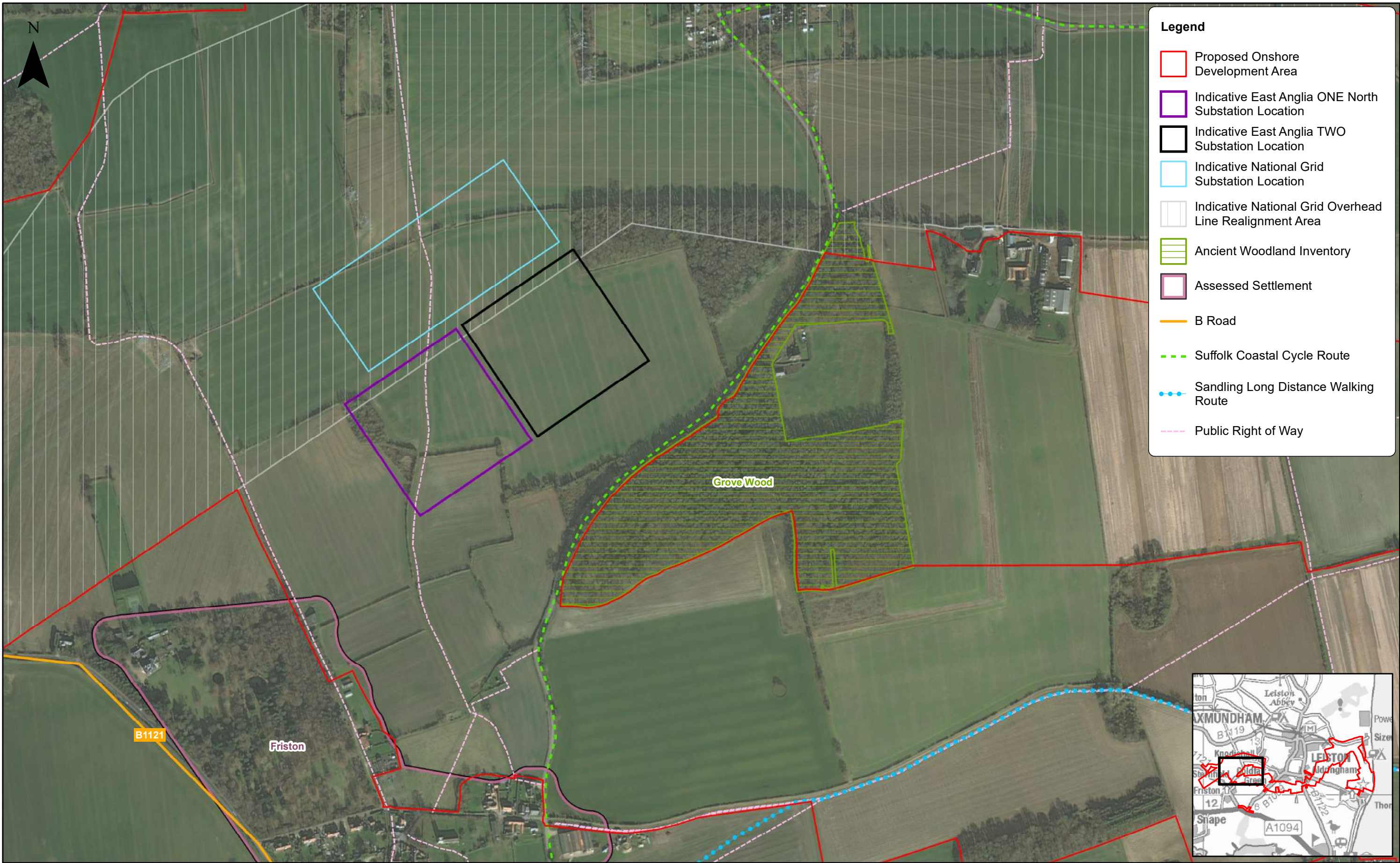
3	17/01/2019	TH	Document Reference Update
2	06/12/2018	LA	Second Issue (OPEN)
1	23/11/2018	LA	First Issue (OPEN)
Rev	Date	By	Comment


Prepared:	LA
Checked:	SM
Approved:	LT

1:40,000	Scale @ A3
This map has been produced to the latest known information at the time of issue, and has been produced for your information only. Please consult with the SPN Offshore GIS team to ensure the content is still current before using the information contained on this map. To the fullest extent permitted by law, we accept no responsibility or liability (whether in contract, tort (including negligence) or otherwise in respect of any errors or omissions in the information contained in the map and shall not be liable for any loss, damage or expense caused by such errors or omissions.	
Contains Ordnance Survey digital data. © Crown copyright. All rights reserved 2018 Licence number 0100031673.	



East Anglia ONE North Cumulative Developments

Doc Ref	EA1N-DEVWF-ENV-REP-IBR-000298	
Rev	3	Datum: OSGB 1936 Projection: BNG
Date	17/01/19	
Figure	29.5	



	3	17/01/2019	TH	Document Reference Update			<div>1:5,000</div> <div>Scale @ A3</div> <div><div></div><div>0100200</div><div>m</div></div>	<div>East Anglia ONE North</div> <div>Onshore Cable Route (aerial)</div> <div>(1 of 7)</div>	Doc Ref	EA1N-DEVWF-ENV-REP-IBR-000298	
	2	06/12/2018	LA	Second Issue (OPEN)	Prepared:	LA			Rev	3	Datum: OSGB 1936 Projection: BNG
	1	23/11/2018	LA	First Issue (OPEN)	Checked:	SM			Date	17/01/19	
	Rev	Date	By	Comment	Approved:	LT			Figure	29.6a	
	<div><div>Contains Ordnance Survey digital data. © Crown copyright. All rights reserved 2018 Licence number 0100031673.</div><div>Source: Esri, DigitalGlobe, GeoEye, Earthstar Geographics, CNES/Airbus DS, USDA, USGS, AeroGRID, IGN, and the GIS User Community</div></div>										



	3	17/01/2019	TH	Document Reference Update			1:5,000		East Anglia ONE North Onshore Cable Route (aerial) (2 of 7)	Doc Ref	EA1N-DEVWF-ENV-REP-IBR-000298			
	2	06/12/2018	LA	Second Issue (OPEN)	Prepared:	LA	Scale @ A3			Rev	3	Datum: OSGB 1936 Projection: BNG		
	1	23/11/2018	LA	First Issue (OPEN)	Checked:	SM	<small>This map has been produced to the latest known information at the time of issue, and has been produced for your information only. Please consult with the SPR Onshore GIS team to ensure the content is still current before using the information contained on this map. To the fullest extent permitted by law, we accept no responsibility or liability (whether in contract, tort (including negligence) or otherwise in respect of any errors or omissions in the information contained in the map and shall not be liable for any loss, damage or expense caused by such errors or omissions.</small>			Date	17/01/19			
	Rev	Date	By	Comment	Approved:	LT				Figure	29.6b			
	<small>Contains Ordnance Survey digital data. © Crown copyright. All rights reserved 2018 Licence number 0100031673. Source: Esri, DigitalGlobe, GeoEye, Earthstar Geographics, CNES/Airbus DS, USDA, USGS, AeroGRID, IGN, and the GIS User Community</small>													



3	17/01/2019	TH	Document Reference Update
2	06/12/2018	LA	Second Issue (OPEN)
1	23/11/2018	LA	First Issue (OPEN)
Rev	Date	By	Comment

Prepared:	LA
Checked:	SM
Approved:	LT

1:5,000

Scale @ A3

0 100 200 m

This map has been produced to the latest known information at the time of issue, and has been produced for your information only. Please consult with the SPN Onshore GIS team to ensure the content is still current before using the information contained on this map. To the fullest extent permitted by law, we accept no responsibility or liability (whether in contract, tort (including negligence) or otherwise in respect of any errors or omissions in the information contained in the map and shall not be liable for any loss, damage or expense caused by such errors or omissions.

Contains Ordnance Survey digital data. © Crown copyright. All rights reserved 2018 Licence number 0100031673. Source: Esri, DigitalGlobe, GeoEye, Earthstar Geographics, CNES/Airbus DS, USDA, USGS, AeroGRID, IGN, and the GIS User Community

East Anglia ONE North

Onshore Cable Route (aerial)

(3 of 7)

Doc Ref	EA1N-DEVWF-ENV-REP-IBR-000298	
Rev	3	Datum: OSGB 1936 Projection: BNG
Date	17/01/19	
Figure	29.6c	



			
3	17/01/2019	TH	Document Reference Update
2	06/12/2018	LA	Second Issue (OPEN)
1	23/11/2018	LA	First Issue (OPEN)
Rev	Date	By	Comment

Prepared:	LA
Checked:	SM
Approved:	LT

1:5,000
Scale @ A3

0	100	200
m		



This map has been produced to the latest known information at the time of issue, and has been produced for your information only. Please consult with the SPN Onshore GIS team to ensure the content is still current before using the information contained on this map. To the fullest extent permitted by law, we accept no responsibility or liability (whether in contract, tort (including negligence) or otherwise in respect of any errors or omissions in the information contained in the map and shall not be liable for any loss, damage or expense caused by such errors or omissions.

Contains Ordnance Survey digital data. © Crown copyright. All rights reserved 2018 Licence number 0100031673. Source: Esri, DigitalGlobe, GeoEye, Earthstar Geographics, CNES/Airbus DS, USDA, USGS, AeroGRID, IGN, and the GIS User Community



East Anglia ONE North	
Onshore Cable Route (aerial)	
(4 of 7)	

Doc Ref	EA1N-DEVWF-ENV-REP-IBR-000298	
Rev	3	Datum: OSGB 1936 Projection: BNG
Date	17/01/19	
Figure	29.6d	





	3	17/01/2019	TH	Document Reference Update			1:5,000 Scale @ A3		East Anglia ONE North Onshore Cable Route (aerial) (5 of 7)	Doc Ref		EA1N-DEVWF-ENV-REP-IBR-000298	
	2	06/12/2018	LA	Second Issue (OPEN)	Prepared:	LA				Rev		3	Datum: OSGB 1936 Projection: BNG
	1	23/11/2018	LA	First Issue (OPEN)	Checked:	SM				Date		17/01/19	
	Rev	Date	By	Comment	Approved:	LT	Figure			29.6e			
	<p><small>This map has been produced to the latest known information at the time of issue, and has been produced for your information only. Please consult with the SPN Onshore GIS team to ensure the content is still current before using the information contained on this map. To the fullest extent permitted by law, we accept no responsibility or liability (whether in contract, tort (including negligence) or otherwise in respect of any errors or omissions in the information contained in the map and shall not be liable for any loss, damage or expense caused by such errors or omissions.</small></p> <p><small>Contains Ordnance Survey digital data. © Crown copyright. All rights reserved 2018 Licence number 0100031673. Source: Esri, DigitalGlobe, GeoEye, Earthstar Geographics, CNES/Airbus DS, USDA, USGS, AeroGRID, IGN, and the GIS User Community</small></p>												



	3	17/01/2019	TH	Document Reference Update			1:5,000 Scale @ A3		<h1>East Anglia ONE North</h1> <h2>Onshore Cable Route (aerial)</h2> <p>(6 of 7)</p>	Doc Ref	EA1N-DEVWF-ENV-REP-IBR-000298	
	2	06/12/2018	LA	Second Issue (OPEN)	Prepared:	LA				Rev	3	Datum: OSGB 1936 Projection: BNG
	1	23/11/2018	LA	First Issue (OPEN)	Checked:	SM	<small>This map has been produced to the latest known information at the time of issue, and has been produced for your information only. Please consult with the SPR Offshore GIS team to ensure the content is still current before using the information contained on this map. To the fullest extent permitted by law, we accept no responsibility or liability (whether in contract, tort (including negligence) or otherwise in respect of any errors or omissions in the information contained in the map and shall not be liable for any loss, damage or expense caused by such errors or omissions.</small> <small>Contains Ordnance Survey digital data. © Crown copyright. All rights reserved 2018 Licence number 0100031673. Source: Esri, DigitalGlobe, GeoEye, Earthstar Geographics, CNES/Airbus DS, USDA, USGS, AeroGRID, IGN, and the GIS User Community</small>					
	Rev	Date	By	Comment	Approved:	LT				Figure	29.6f	



	3	17/01/2019	TH	Document Reference Update			1:5,000 Scale @ A3		<h1>East Anglia ONE North</h1> <h2>Onshore Cable Route (aerial)</h2> <p>(7 of 7)</p>	Doc Ref	EA1N-DEVWF-ENV-REP-IBR-000298	
	2	06/12/2018	LA	Second Issue (OPEN)	Prepared:	LA				Rev	3	Datum: OSGB 1936 Projection: BNG
	1	23/11/2018	LA	First Issue (OPEN)	Checked:	SM	Date	17/01/19				
	Rev	Date	By	Comment	Approved:	LT	Figure	29.6g				
							<p><small>This map has been produced to the latest known information at the time of issue, and has been produced for your information only. Please consult with the SPR Offshore GIS team to ensure the content is still current before using the information contained on this map. To the fullest extent permitted by law, we accept no responsibility or liability (whether in contract, tort (including negligence) or otherwise in respect of any errors or omissions in the information contained in the map and shall not be liable for any loss, damage or expense caused by such errors or omissions.</small></p> <p><small>Contains Ordnance Survey digital data. © Crown copyright. All rights reserved 2018 Licence number 0100031673. Source: Esri, DigitalGlobe, GeoEye, Earthstar Geographics, CNES/Airbus DS, USDA, USGS, AeroGRID, IGN, and the GIS User Community</small></p>					



Legend

Proposed Onshore Development Area

3km LVIA Study Area

Indicative East Anglia ONE North Substation Location

Indicative East Anglia TWO Substation Location

Indicative National Grid Substation Location

Indicative National Grid Overhead Line Realignment Area

Offshore Export Cable Corridor Area of Search

Existing Woodland (OS Vectormap District)

Suffolk Landscape Character Assessment (2011)
Areas with OPEN sub-divisions

1. Ancient estate claylands

5. Coastal Dunes shingle ridges

6. Coastal levels

7. Estate sandlands

Areas outwith OPEN sub-divisions

14. Rolling estate claylands

16. Rolling estate sandlands

20. Saltmarsh & intertidal flats

25. Urban

26. Valley meadowlands

Zone of Theoretical Visibility*
(East Anglia ONE North & National Grid)

Higher Theoretical Visibility

Lower Theoretical Visibility

Substation Height: Various

DSM: Lidar 2m



DSM resolution: 2m

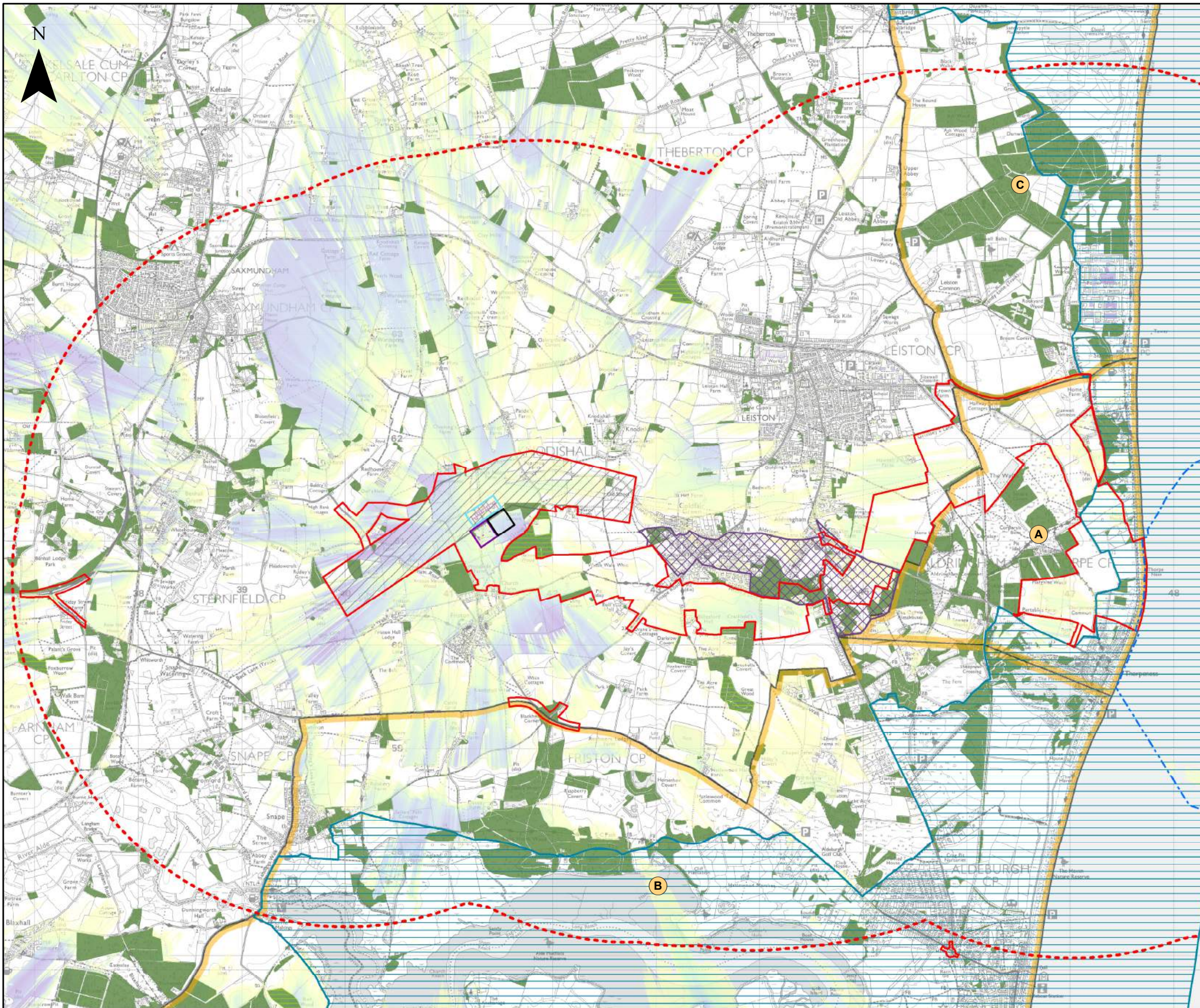
Observer height: 2m

Surface features: Included

Earth curvature: Included

*ZTV shows higher to lower visibility based on the amount of the onshore substation and National Grid substation visible as represented by a grid of points across a 3D model representing the Rochdale Envelope of the onshore substation site. The ZTV does not indicate the decrease in scale that occurs with increased distance from the onshore substation. Areas of existing woodland have been masked out to compensate for limitations in the ZTV production process.

	3	17/01/2019	TH	Document Reference Update			1:40,000		<h1>East Anglia ONE North</h1> <h2>Onshore Substation ZTV</h2> <h3>(with Landscape Character)</h3>	Doc Ref EA1N-DEVWF-ENV-REP-IBR-000298		
	2	06/12/2018	LA	Second Issue (OPEN)	Prepared:	LA	Scale @ A3			Rev	3	Datum: OSGB 1936 Projection: BNG
	1	23/11/2018	LA	First Issue (OPEN)	Checked:	SM	This map has been produced to the latest known information at the time of issue, and has been produced for your information only. Please consult with the SPR Onshore GIS team to ensure the content is still current before using the information contained on this map. To the fullest extent permitted by law, we accept no responsibility or liability (whether in contract, tort (including negligence) or otherwise in respect of any errors or omissions in the information contained in the map and shall not be liable for any loss, damage or expense caused by such errors or omissions.			Date	17/01/19	
	Rev		Date	By	Comment	Approved:	LT			Figure	29.7	
	Contains Ordnance Survey digital data. © Crown copyright. All rights reserved 2018 Licence number 0100031673.											



Legend

- Proposed Onshore Development
- 3km LVIA Study Area
- Indicative East Anglia ONE North Substation Location
- Indicative East Anglia TWO Substation Location
- Indicative National Grid Substation Location
- Indicative National Grid Overhead Line Realignment Area
- Offshore Export Cable Corridor Area of Search
- Existing Woodland (OS Vectormap District)
- Landscape Designations:
 - Heritage Coast
 - Ancient Woodland Inventory
 - Suffolk Coast & Heaths Area of Outstanding Natural Beauty (AONB)
 - A - AONB between Thorpeness, Sizewell and Leiston
 - B - AONB between Thorpeness, Aldeburgh and Snape
 - C - AONB Sizewell and Dunwich Forest
 - Hundred River Valley Special Landscape Area

Zone of Theoretical Visibility*

- (East Anglia ONE North & National Grid)
- Higher Theoretical Visibility
- Lower Theoretical Visibility

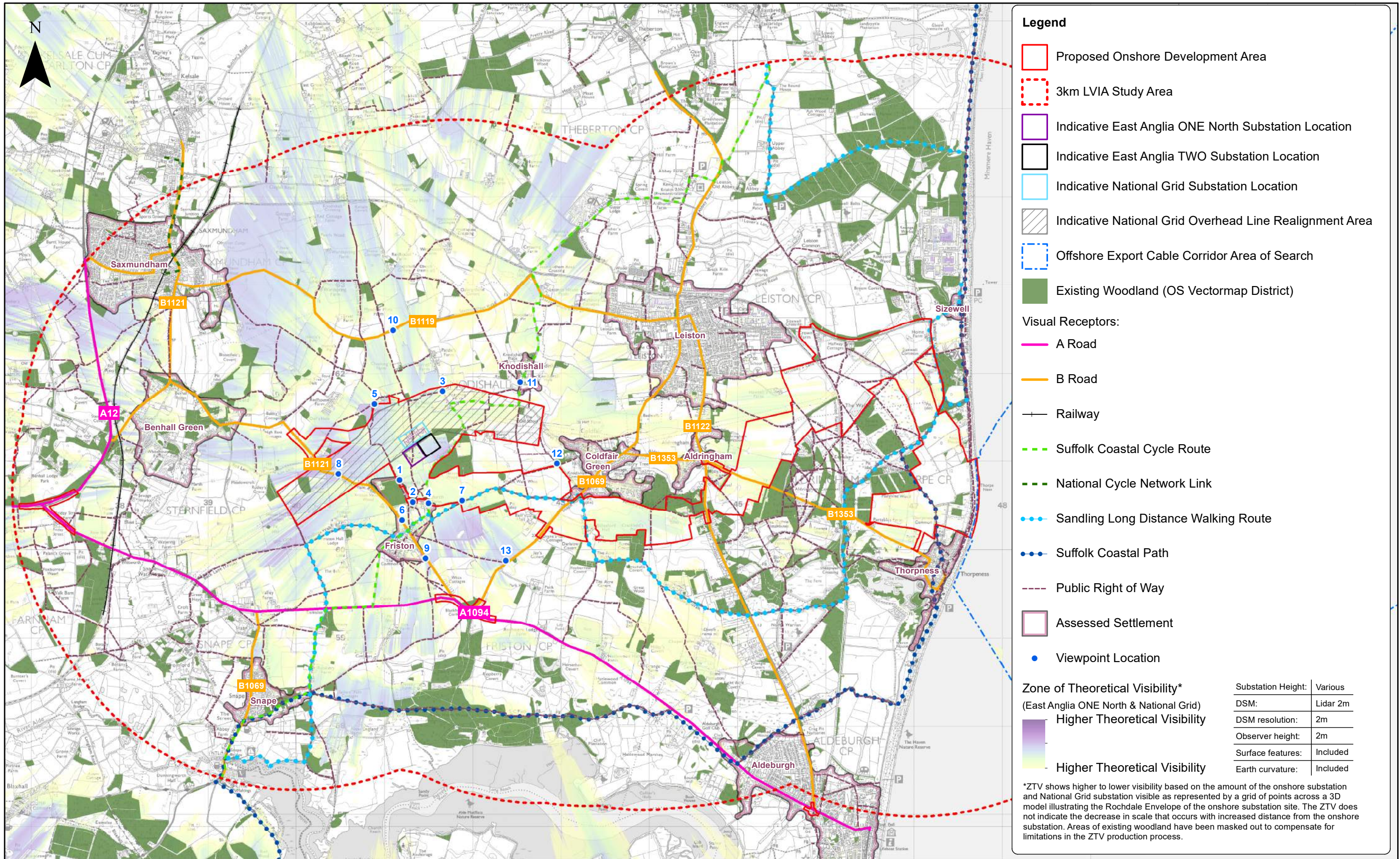
Substation Height:	Various
DSM:	Lidar 2m
DSM resolution:	2m
Observer height:	2m
Surface features:	Included
Earth curvature:	Included

*ZTV shows higher to lower visibility based on the amount of the onshore substation and National Grid substation visible as represented by a grid of points across a 3D model illustrating the Rochdale Envelope of the onshore substation site. The ZTV does not indicate the decrease in scale that occurs with increased distance from the onshore substation. Areas of existing woodland have been masked out to compensate for limitations in the ZTV production process.

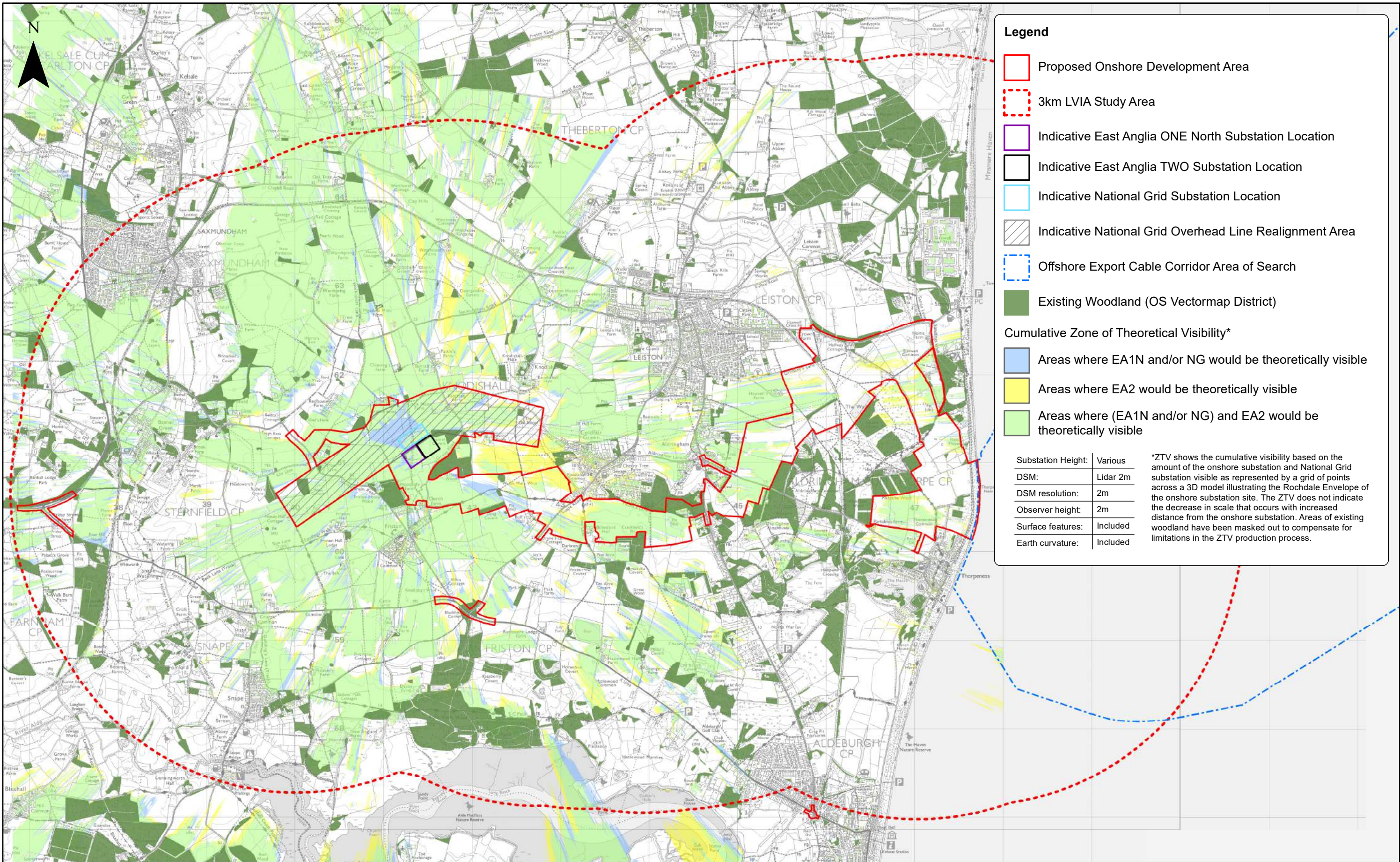
	3	17/01/2019	TH	Document Reference Update			1:40,000 Scale @ A3		East Anglia ONE North Onshore Substation ZTV (with Landscape Designations)	Doc Ref	EA1N-DEVWF-ENV-REP-IBR-000298	
	2	06/12/2018	LA	Second Issue (OPEN)	Prepared:	LA				Rev	3	Datum: OSGB 1936 Projection: BNG
	1	23/11/2018	LA	First Issue (OPEN)	Checked:	SM				Date	17/01/19	
					Approved:	LT				Figure	29.8	
	Rev	Date	By	Comment								

This map has been produced to the latest known information at the time of issue, and has been produced for your information only. Please consult with the SPR Offshore GIS team to ensure the content is still current before using the information contained on this map. To the fullest extent permitted by law, we accept no responsibility or liability (whether in contract, tort (including negligence) or otherwise) in respect of any errors or omissions in the information contained in the map and shall not be liable for any loss, damage or expense caused by such errors or omissions.

Contains Ordnance Survey digital data. © Crown copyright. All rights reserved 2018 Licence number 0100031673. Contains, or is based on, information supplied by Natural England 2017. © Historic England 2017.



	3	17/01/2019	TH	Document Reference Update			1:40,000		East Anglia ONE North Onshore Substation ZTV (with Visual Receptors)	Doc Ref EA1N-DEVWF-ENV-REP-IBR-000298	Rev 3 Date 17/01/19 Figure 29.9	Datum: OSGB 1936 Projection: BNG
	2	06/12/2018	LA	Second Issue (OPEN)	Prepared:	LA	Scale @ A3					
	1	23/11/2018	LA	First Issue (OPEN)	Checked:	SM	This map has been produced to the latest known information at the time of issue, and has been produced for your information only. Please consult with the SPN Offshore GIS team to ensure the content is still current before using the information contained on this map. To the fullest extent permitted by law, we accept no responsibility or liability (whether in contract, tort (including negligence) or otherwise in respect of any errors or omissions in the information contained in the map and shall not be liable for any loss, damage or expense caused by such errors or omissions.					
	Rev	Date	By	Comment	Approved:	LT	Contains Ordnance Survey digital data. © Crown copyright. All rights reserved 2018 Licence number 0100031673.					



Legend

Proposed Onshore Development Area

3km LVIA Study Area

Indicative East Anglia ONE North Substation Location

Indicative East Anglia TWO Substation Location

Indicative National Grid Substation Location

Indicative National Grid Overhead Line Realignment Area

Offshore Export Cable Corridor Area of Search

Existing Woodland (OS Vectormap District)

Cumulative Zone of Theoretical Visibility*



Areas where EA1N and/or NG would be theoretically visible

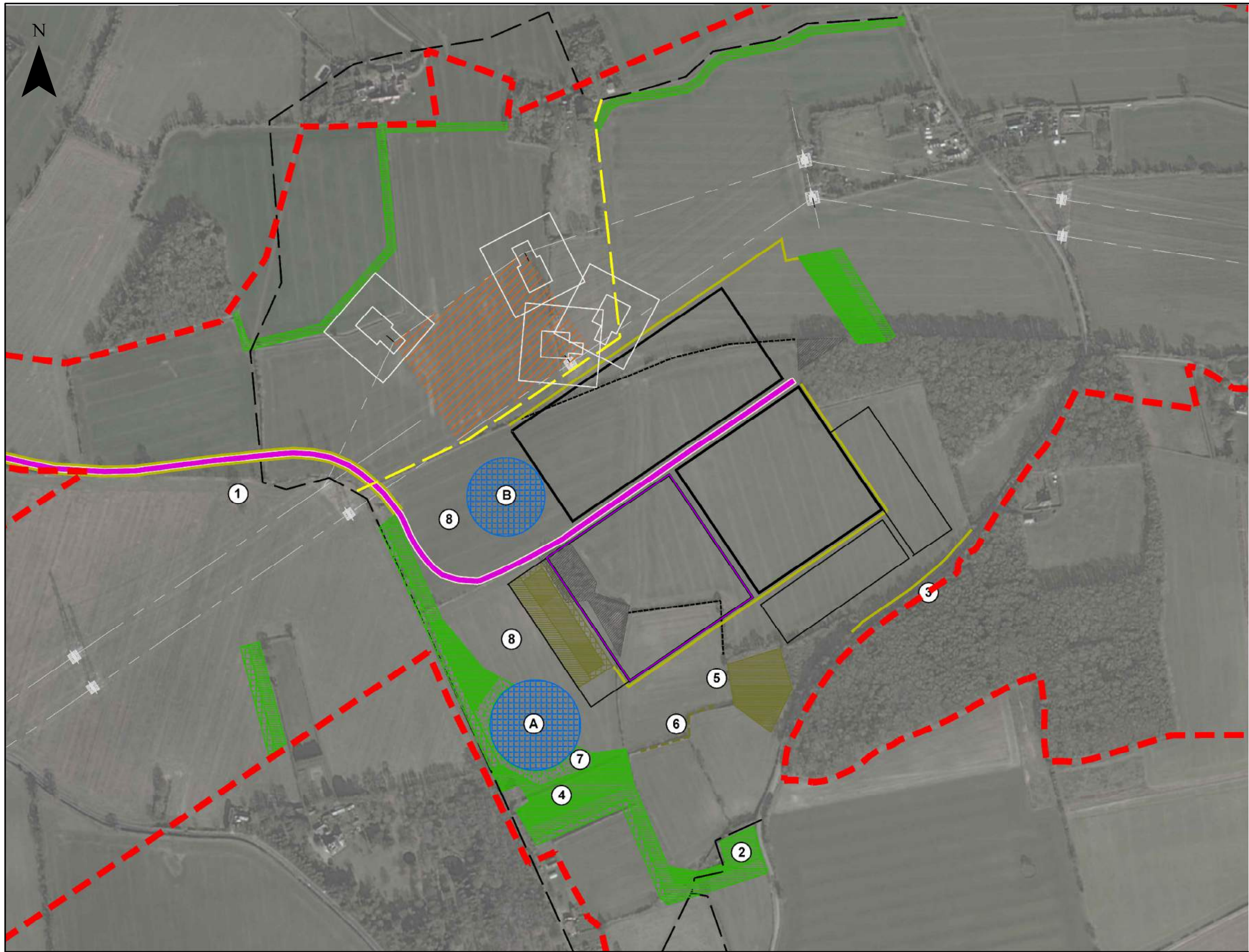
Areas where EA2 would be theoretically visible

Areas where (EA1N and/or NG) and EA2 would be theoretically visible

Substation Height:	Various
DSM:	Lidar 2m
DSM resolution:	2m
Observer height:	2m
Surface features:	Included
Earth curvature:	Included



*ZTV shows the cumulative visibility based on the amount of the onshore substation and National Grid substation visible as represented by a grid of points across a 3D model illustrating the Rochdale Envelope of the onshore substation site. The ZTV does not indicate the decrease in scale that occurs with increased distance from the onshore substation. Areas of existing woodland have been masked out to compensate for limitations in the ZTV production process.

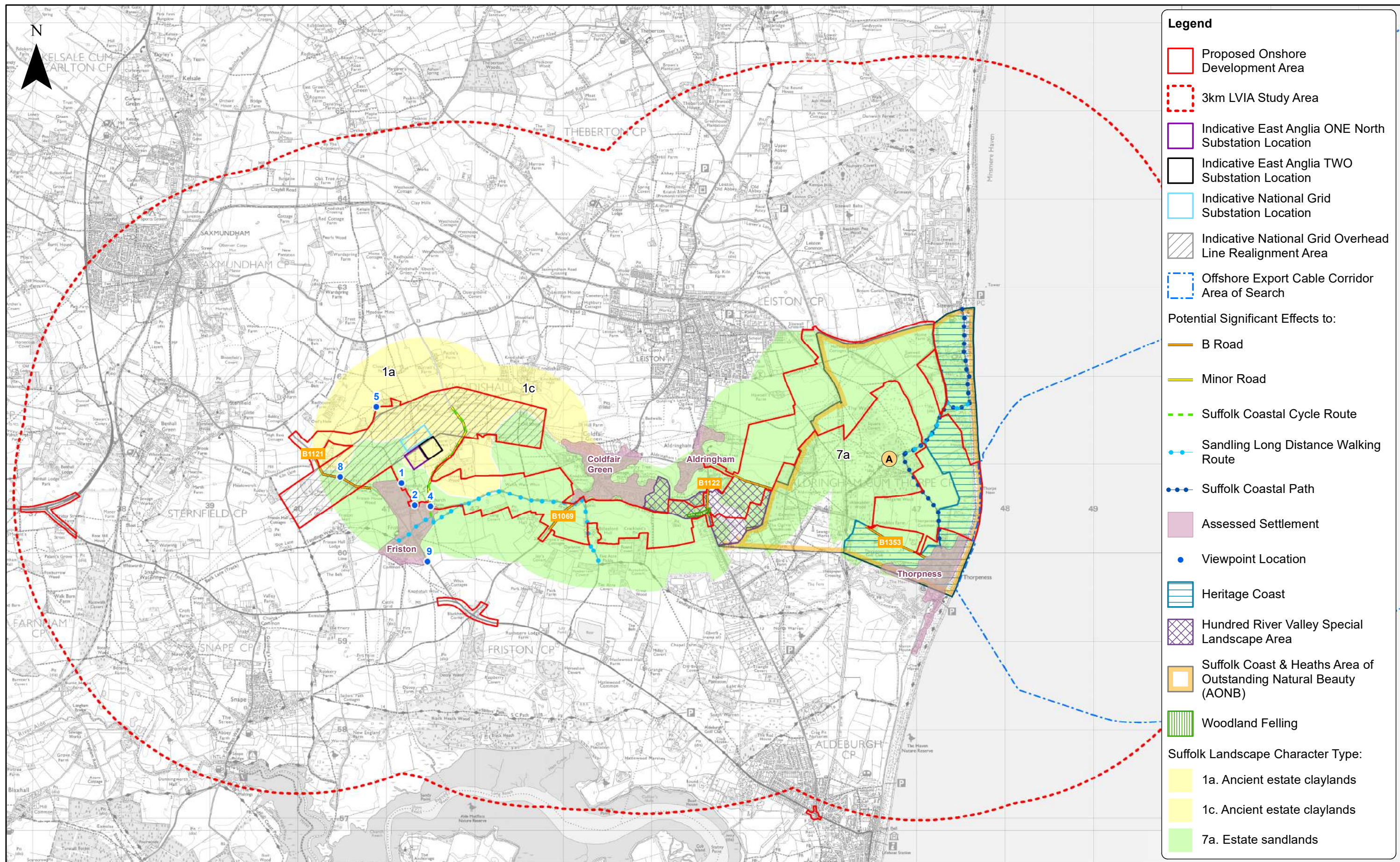
	3	17/01/2019	TH	Document Reference Update			1:40,000		East Anglia ONE North Cumulative ZTV (EA1N & NG with EA2)	Doc Ref EA1N-DEVWF-ENV-REP-IBR-000298		
	2	06/12/2018	LA	Second Issue (OPEN)	Prepared:	LA	Scale @ A3			Rev 3	Datum: OSGB 1936 Projection: BNG	
	1	26/11/2018	LA	Second Issue (OPEN)	Checked:	SM				Date 17/01/19		
	Rev		Date	By	Comment	Approved:	LT			Figure 29.10		
	This map has been produced to the latest known information at the time of issue, and has been produced for your information only. Please consult with the SPR Offshore GIS team to ensure the content is still current before using the information contained on this map. To the fullest extent permitted by law, we accept no responsibility or liability (whether in contract, tort (including negligence) or otherwise) in respect of any errors or omissions in the information contained in the map and shall not be liable for any loss, damage or expense caused by such errors or omissions. Contains Ordnance Survey digital data. © Crown copyright. All rights reserved 2018 Licence number 0100031673.											



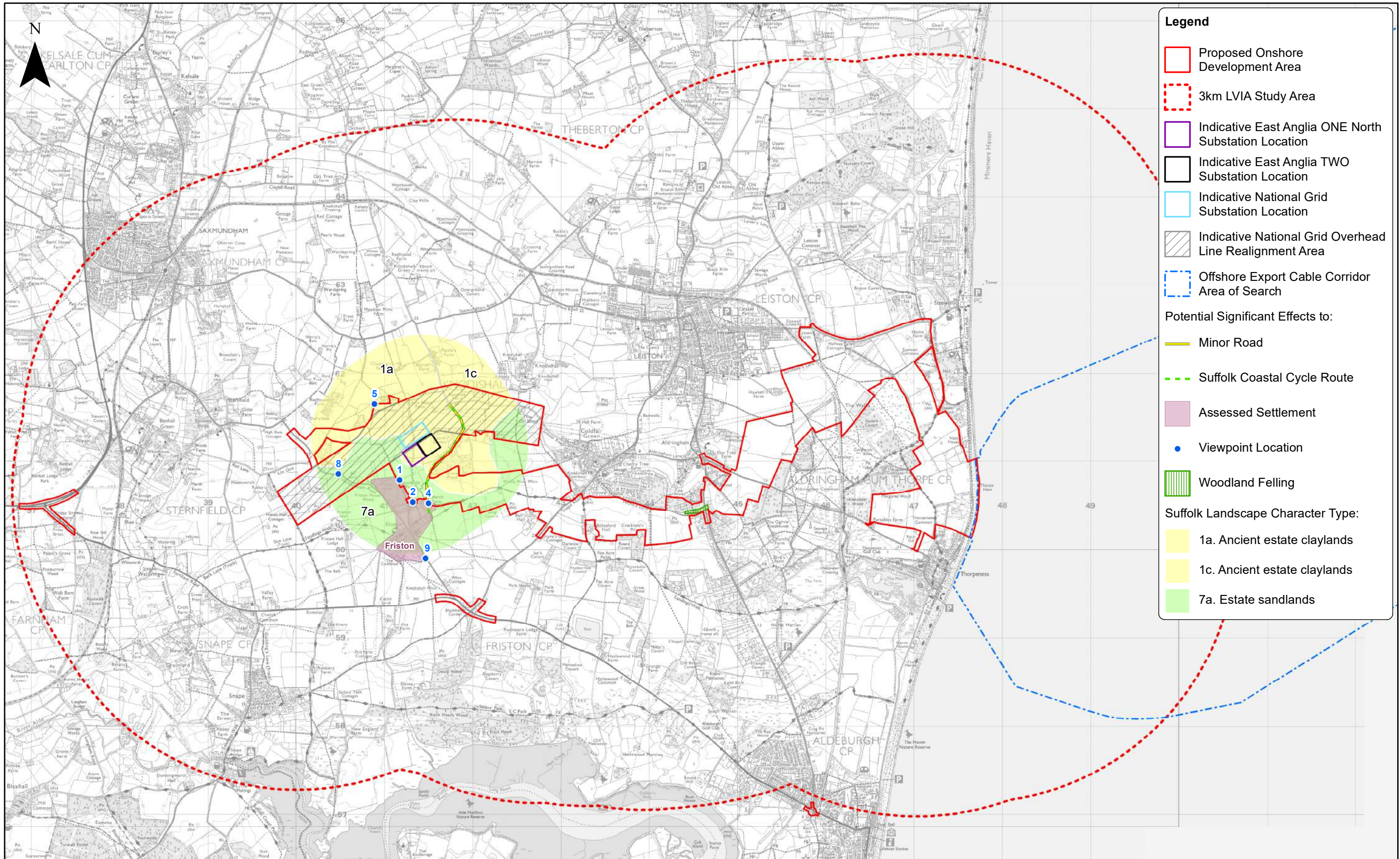
- Proposed Onshore Development Area
- Indicative cable route
- Indicative cable trench
- Indicative temporary access route / haul road
- Permanent access road
- Construction compound
- Substation operational compound location
- A - Indicative SuDS Basin for EA2 and EA1N Substations. Required size and indicative location shown. Final position TBC.
- B - Indicative SuDS Basin for surface water from National Grid Substation. Required size and indicative location shown. Final position TBC.
- Proposed re-routing of footpath to tie into existing footpaths
- Existing footpath
- Pre construction stage planting:**
- Core woodland - comprising generally slower growing mixed broadleaf species
- Edge woodland - comprising generally lower growing mixed broadleaf and shrub species
- Screening woodland - comprising generally faster growing mixed broadleaf and conifer species to provide visual screening and shelter for slower growing core woodland
- Wet woodland - mix appropriate for SUDS detention basin area.
- Areas of existing woodland to be removed
- Existing hedgerow to be removed
- Post construction stage planting:**
- Core woodland - comprising generally slower growing mixed broadleaf species
- Edge woodland - comprising generally lower growing mixed broadleaf and shrub species
- Screening woodland - comprising generally faster growing mixed broadleaf and conifer species to provide visual screening and shelter for slower growing core woodland
- Existing hedgerow to be removed and replanted post construction
- Mixed native species hedge



- Mitigation planting notes:**
- General Notes:
- Planting densities and species mix to be further developed. All species to be locally appropriate - refer to section 29.3.4 of LVIA for indicative species lists.
- Notionally four woodland types are proposed in order to achieve a variety of screening effects and a diverse habitat: core woodland, edge woodland, screening woodland and wet woodland.
- Specific notes (refer to plan):
1. Permanent access road to be hedge lined, making use of existing hedge where possible.
 2. Proposed new screening woodland links or extends areas of existing woodland to create continuous habitat corridors.
 3. Additional hedge and hedgerow tree planting is proposed along the western edge of Grove Road.
 4. Additional screening woodland is proposed to the north of Friston which, in combination with the existing hedgerows, provides a layered screening approach.
 5. Where possible existing hedgerows are to be protected, retained and incorporated as part of a layered mitigation screening approach.
 6. Any hedgerows which are removed from within the cable route corridor are to be replanted post construction.
 7. Woodland surrounding SUDS is to be integrated into the SUDS design (e.g. using wet woodland species). Eastern edge of SUDS to be open to create a variety of habitats/water edge conditions.
 8. Non wooded areas surrounding SUDS to be converted to species rich grassland.

	3	17/01/2019	TH	Document Reference Update			<div>1:5,000</div> <div>Scale @ A3</div> <div></div>	<div>East Anglia ONE North</div> <div>Onshore Substation –</div> <div>Indicative Landscape Mitigation Plan</div>	Doc Ref		EA1N-DEVWF-ENV-REP-IBR-000298	
	2	10/12/2018	LA	Second Issue (OPEN)	Prepared:	LA			Rev	3	Datum: OSGB 1936 Projection: BNG	
	1	23/11/2018	LA	First Issue (OPEN)	Checked:	SM			Date	17/01/19		
	Rev	Date	By	Comment	Approved:	LT			Figure	29.11		
	<div>This map has been produced to the latest known information at the time of issue, and has been produced for your information only. Please consult with the SPR Onshore GIS team to ensure the content is still current before using the information contained on this map. To the fullest extent permitted by law, we accept no responsibility or liability (whether in contract, tort (including negligence) or otherwise in respect of any errors or omissions in the information contained in the map and shall not be liable for any loss, damage or expense caused by such errors or omissions. Contains Ordnance Survey digital data. © Crown copyright. All rights reserved 2018 Licence number 0100031673.</div>											



	3	17/01/2019	TH	Document Reference Update			1:40,000		East Anglia ONE North Summary of Significant Effects - Construction	Doc Ref	EA1N-DEVWF-ENV-REP-IBR-000298	
	2	06/12/2018	LA	Second Issue (OPEN)	Prepared:	LA	Scale @ A3			Rev	3	Datum: OSGB 1936 Projection: BNG
	1	23/11/2018	LA	First Issue (OPEN)	Checked:	SM	This map has been produced to the latest known information at the time of issue, and has been produced for your information only. Please consult with the SPN Onshore GIS team to ensure the content is still current before using the information contained on this map. To the fullest extent permitted by law, we accept no responsibility or liability (whether in contract, tort (including negligence) or otherwise) in respect of any errors or omissions in the information contained in the map and shall not be liable for any loss, damage or expense caused by such errors or omissions.			Date	17/01/19	
	Rev	Date	By	Comment	Approved:	LT	Contains Ordnance Survey digital data. © Crown copyright. All rights reserved 2018 Licence number 0100031673.			Figure	29.12a	



	3	17/01/2019	TH	Document Reference Update			1:40,000		East Anglia ONE North Summary of Significant Effects - Operation (Without Mitigation)	Doc Ref EA1N-DEVWF-ENV-REP-IBR-000298		
	2	06/12/2018	LA	Second Issue (OPEN)	Prepared:	LA	Scale @ A3			Rev 3	Datum: OSGB 1936 Projection: BNG	
	1	23/11/2018	LA	First Issue (OPEN)	Checked:	SM	<small>This map has been produced to the latest known information at the time of issue, and has been produced for your information only. Please consult with the SPR Offshore GIS team to ensure the content is still current before using the information contained on this map. To the fullest extent permitted by law, we accept no responsibility or liability (whether in contract, tort (including negligence) or otherwise in respect of any errors or omissions in the information contained in the map and shall not be liable for any loss, damage or expense caused by such errors or omissions. Contains Ordnance Survey digital data. © Crown copyright. All rights reserved 2018 Licence number 0100031673.</small>					
	Rev	Date	By	Comment	Approved:	LT				Figure 29.12b		

This page is intentionally blank