

# East Anglia ONE North Offshore Windfarm

## Chapter 21

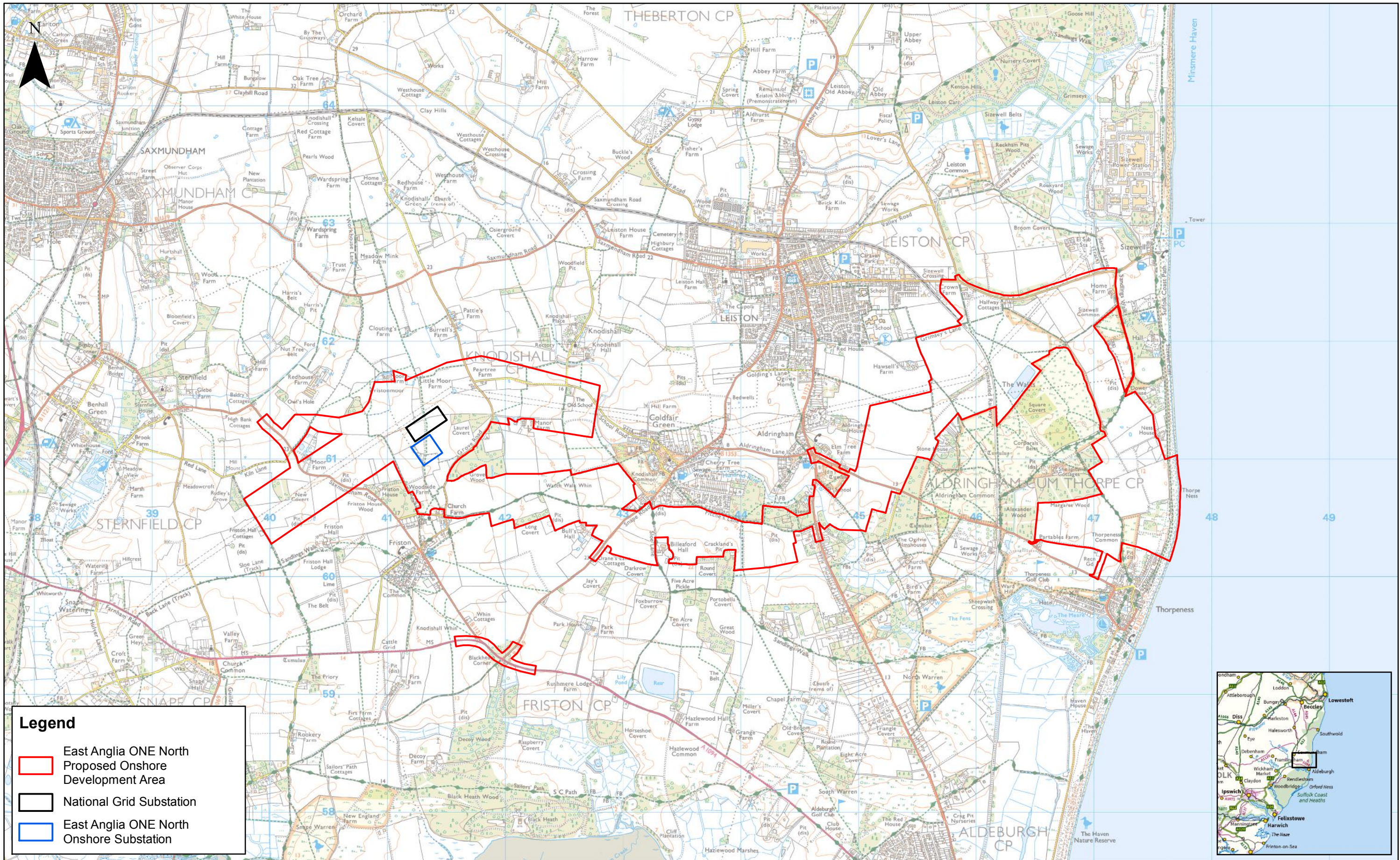
### Land Use

### Figures

Preliminary Environmental Information  
Volume 2

**This page is intentionally blank**





1	19/11/2018	FC	First Issue.	Prepared:	FC
Rev	Date	By	Comment	Checked:	RJ
				Approved:	AH

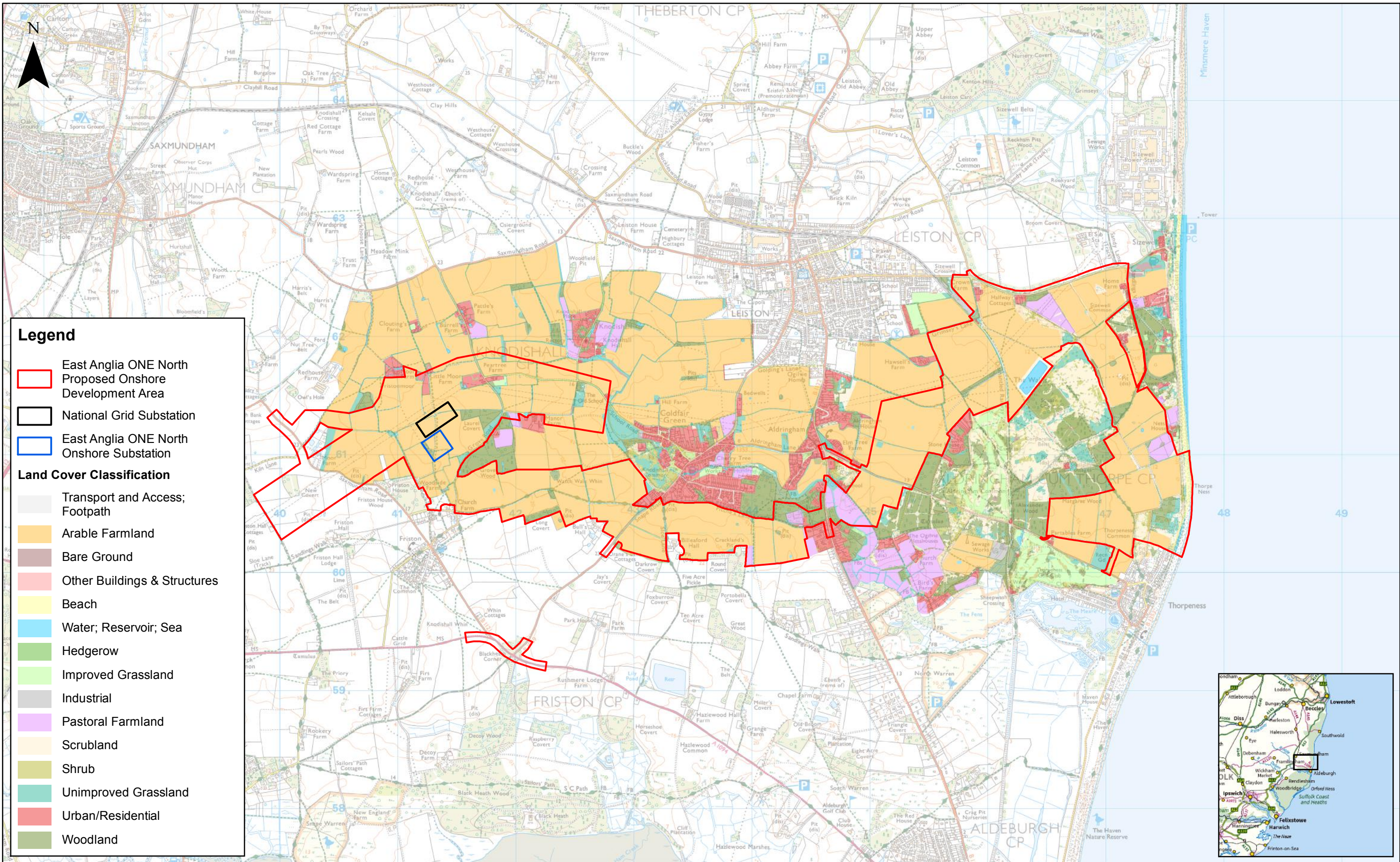
1:30,000	Scale @ A3
0	0.5
1	
Source: © Crown copyright and database rights 2018. Ordnance Survey 0100031673.	
This map has been produced to the latest known information at the time of issue, and has been produced for your information only. Please consult with the SPR Offshore GIS team to ensure the content is still current before using the information contained on this map. To the fullest extent permitted by law, we accept no responsibility or liability (whether in contract, tort (including negligence) or otherwise in respect of any errors or omissions in the information contained in the map and shall not be liable for any loss, damage or expense caused by such errors or omissions.	

## East Anglia ONE North

### Study Area

Drg No	EA1N-DEV-DRG-IBR-000343	Coordinate System: BNG Datum: OSGB36
Rev	1	
Date	19/11/18	
Figure	21.1	





1	19/11/2018	FC	First Issue.	Checked:	RJ
Rev	Date	By	Comment	Approved:	AH

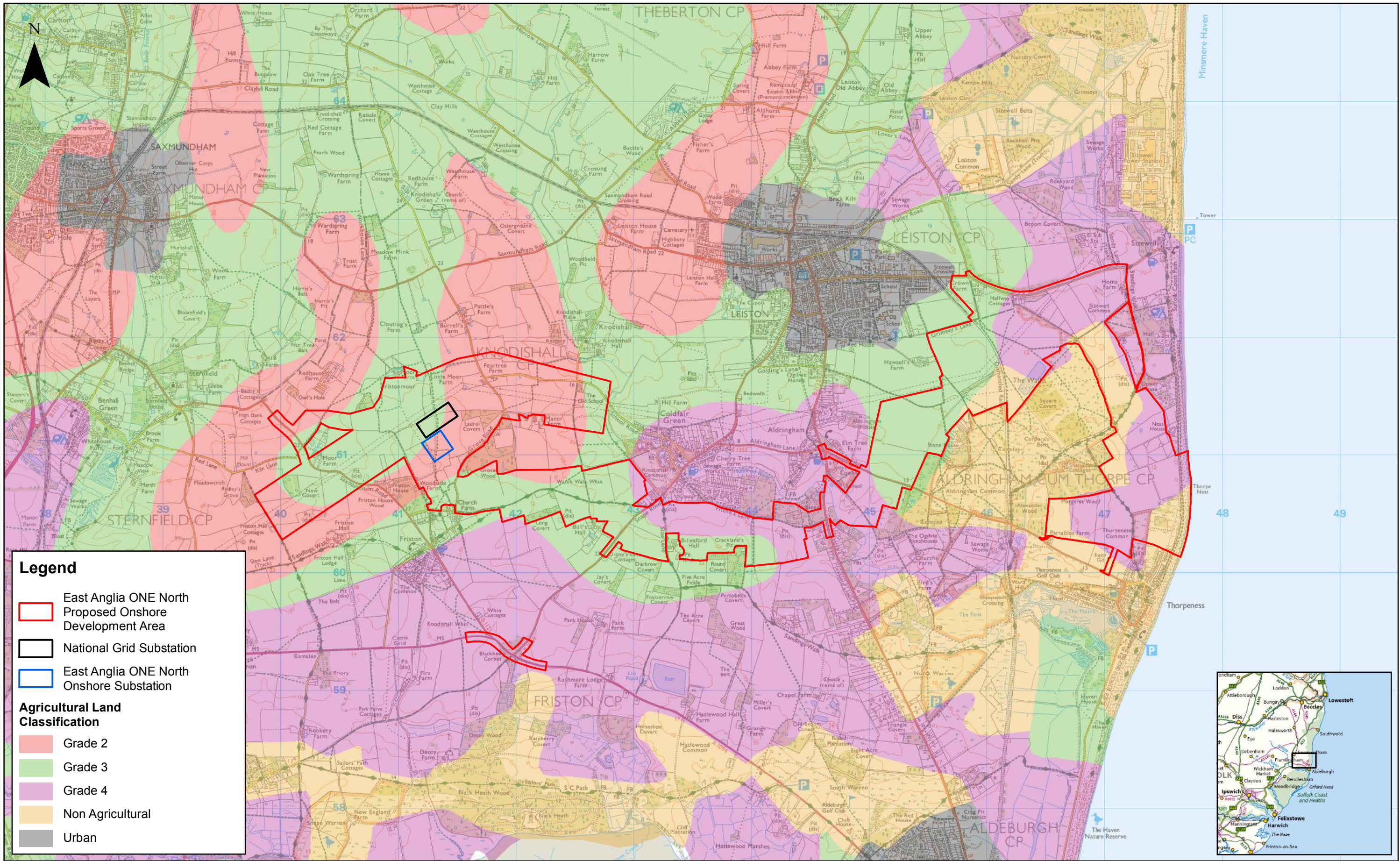
1:30,000	Scale @ A3	Prepared:	FC	Checked:	RJ	Approved:	AH
Source: ©APEM, 2018. © Crown copyright and database rights 2018. Ordnance Survey 0100031673.							
This map has been produced to the latest known information at the time of issue, and has been produced for your information only. Please consult with the SPR Offshore GIS team to ensure the content is still current before using the information contained on this map. To the fullest extent permitted by law, we accept no responsibility or liability (whether in contract, tort (including negligence) or otherwise) in respect of any errors or omissions in the information contained in the map and shall not be liable for any loss, damage or expense caused by such errors or omissions.							

## East Anglia ONE North

### Land Cover Mapping

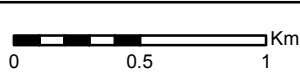
Drg No	EA1N-DEV-DRG-IBR-000344	Coordinate System:	BNG
Rev	1	Datum:	OSGB36
Date	19/11/18		
Figure	21.2		





1	19/11/2018	FC	First Issue.	Checked:	RJ
Rev	Date	By	Comment	Approved:	AH

1:30,000	Scale @ A3
Prepared:	FC
Checked:	RJ
Approved:	AH
Source: © Natural England, 2018. © Crown copyright and database rights 2018. Ordnance Survey 0100031673.	
This map has been produced to the latest known information at the time of issue, and has been produced for your information only. Please consult with the SPR Offshore GIS team to ensure the content is still current before using the information contained on this map.	
To the fullest extent permitted by law, we accept no responsibility or liability (whether in contract, tort (including negligence) or otherwise) in respect of any errors or omissions in the information contained in the map and shall not be liable for any loss, damage or expense caused by such errors or omissions.	

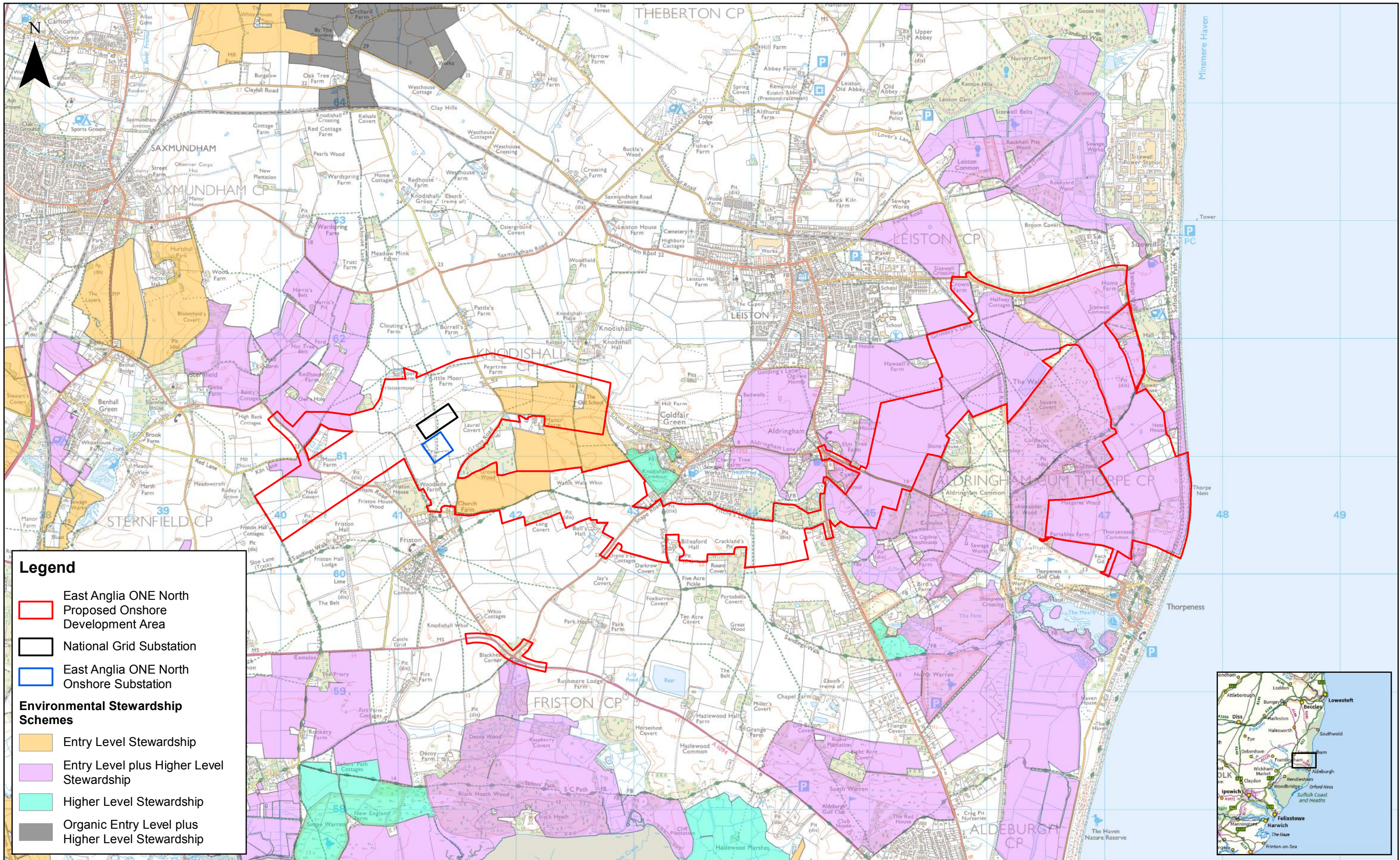


# East Anglia ONE North

## Agricultural Land Classification

Drg No	EA1N-DEV-DRG-IBR-000345	Coordinate System: BNG Datum: OSGB36
Rev	1	
Date	19/11/18	
Figure	21.3	





Rev	Date	By	Comment
1	19/11/2018	FC	First Issue.

Prepared: FC  
Checked: RJ  
Approved: AH

1:30,000  
Scale @ A3

0 0.5 1 Km

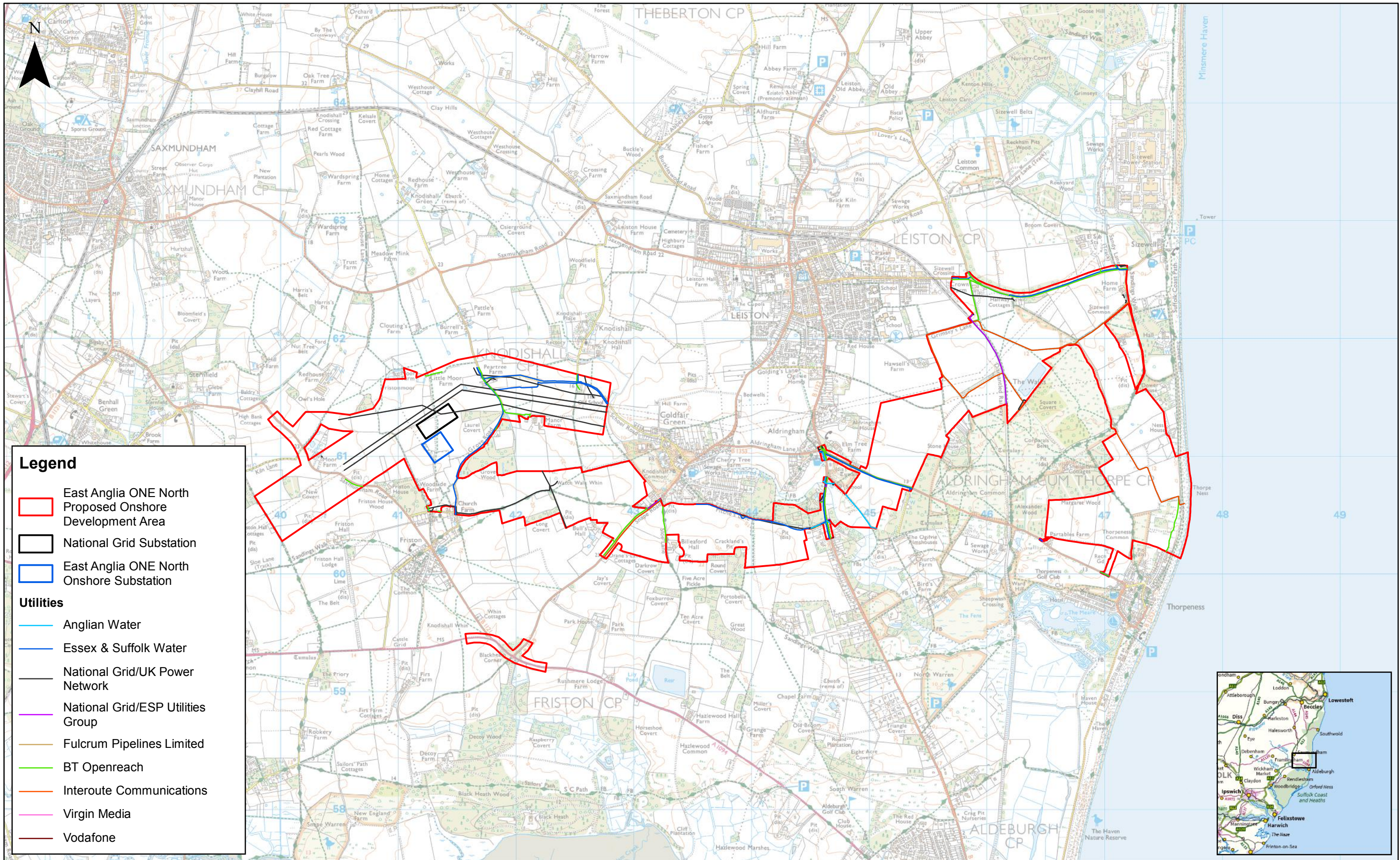
Source: © Natural England, 2018. © Crown copyright and database rights 2018. Ordnance Survey 0100031673.  
This map has been produced to the latest known information at the time of issue, and has been produced for your information only. Please consult with the SPR Offshore GIS team to ensure the content is still current before using the information contained on this map. To the fullest extent permitted by law, we accept no responsibility or liability (whether in contract, tort (including negligence) or otherwise in respect of any errors or omissions in the information contained in the map and shall not be liable for any loss, damage or expense caused by such errors or omissions.

## East Anglia ONE North

### Environmental Stewardship Scheme Agreements

Drg No	EA1N-DEV-DRG-IBR-000346	Coordinate System: BNG Datum: OSGB36
Rev	1	
Date	19/11/18	
Figure	21.4	





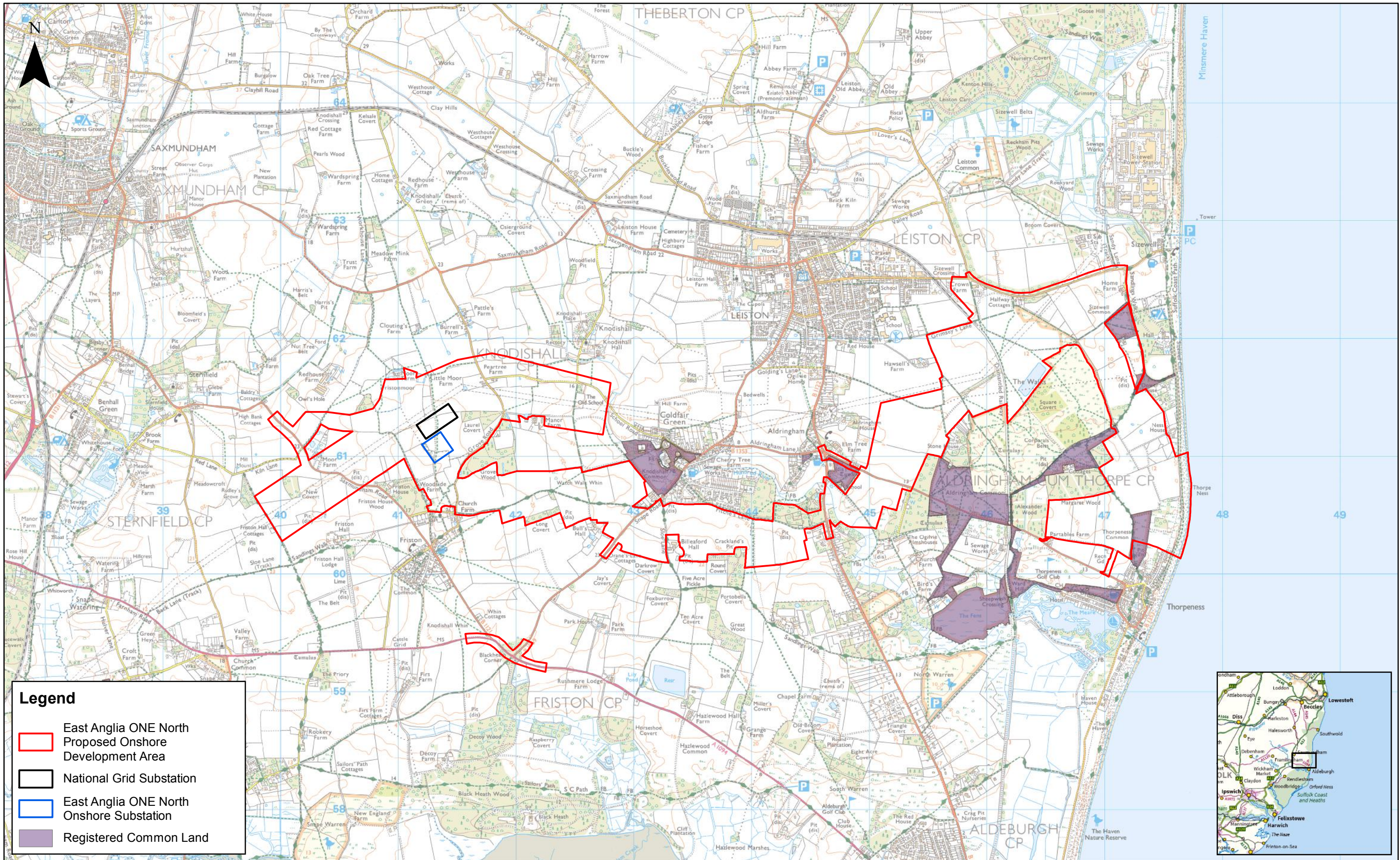
Rev	Date	By	Comment
1	19/11/2018	FC	First Issue.

Prepared:	FC
Checked:	RJ
Approved:	AH

Scale @ A3  
1:30,000  
0 0.5 1 Km  
Source: © Emap, 2018. © Crown copyright and database rights 2018. Ordnance Survey 0100031673.  
This map has been produced to the latest known information at the time of issue, and has been produced for your information only. Please consult with the SPR Offshore GIS team to ensure the content is still current before using the information contained on this map. To the fullest extent permitted by law, we accept no responsibility or liability (whether in contract, tort (including negligence) or otherwise) in respect of any errors or omissions in the information contained in the map and shall not be liable for any loss, damage or expense caused by such errors or omissions.

East Anglia ONE North		Drg No	EA1N-DEV-DRG-IBR-000347
Utilities		Rev	1
		Date	19/11/18
		Figure	21.5
		Coordinate System: BNG Datum: OSGB36	







East Anglia ONE North  
Proposed Onshore  
Development Area

National Grid Substation

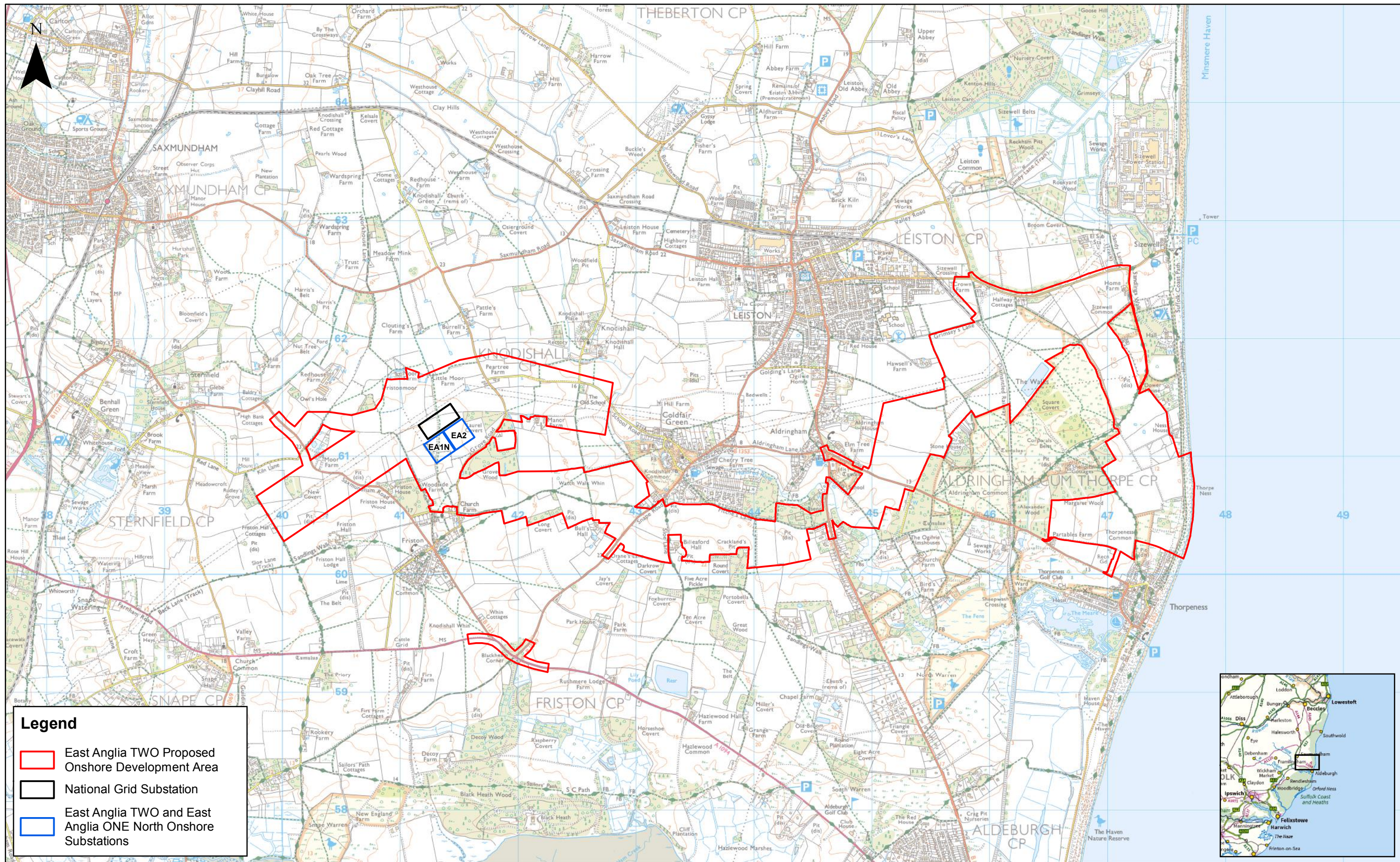
East Anglia ONE North  
Onshore Substation

Registered Common Land

Legend

						1:30,000		<b>East Anglia ONE North</b>	<b>Drg No</b> EA1N-DEV-DRG-IBR-000348	
				Prepared:	FC	Scale @ A3			<b>Rev</b> 1	Coordinate System: BNG Datum: OSGB36
	1	19/11/2018	FC	First Issue.	Checked:	RJ	Source: © Natural England, 2018. © Crown copyright and database rights 2018. Ordnance Survey 0100031673. <small>This map has been produced to the latest known information at the time of issue, and has been produced for your information only. Please consult with the SPR Offshore GIS team to ensure the content is still current before using the information contained on this map. To the fullest extent permitted by law, we accept no responsibility or liability (whether in contract, tort (including negligence) or otherwise in respect of any errors or omissions in the information contained in the map and shall not be liable for any loss, damage or expense caused by such errors or omissions.</small>		<b>Date</b> 19/11/18	
	<b>Rev</b>	<b>Date</b>	<b>By</b>	<b>Comment</b>	<b>Approved:</b>	<b>AH</b>	<b>Common Access Land</b>		<b>Figure</b> 21.6	





## Legend

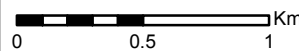
- East Anglia TWO Proposed Onshore Development Area
- National Grid Substation
- East Anglia TWO and East Anglia ONE North Onshore Substations



Rev	Date	By	Comment
1	26/11/2018	FC	First Issue.

Prepared:	FC
Checked:	RJ
Approved:	AH

1:30,000  
Scale @ A3



Source: © Crown copyright and database rights 2018. Ordnance Survey 0100031673.  
This map has been produced to the latest known information at the time of issue, and has been produced for your information only. Please consult with the SPR Offshore GIS team to ensure the content is still current before using the information contained on this map. To the fullest extent permitted by law, we accept no responsibility or liability (whether in contract, tort (including negligence) or otherwise) in respect of any errors or omissions in the information contained in the map and shall not be liable for any loss, damage or expense caused by such errors or omissions.

## East Anglia ONE North

East Anglia TWO Proposed Onshore Development Area

Drg No	EA1N-DEV-DRG-IBR-000427	Coordinate System:	BNG
Rev	1	Datum:	OSGB36
Date	26/11/18		
Figure	21.7		



**This page is intentionally blank**