

East Anglia ONE North Offshore Windfarm

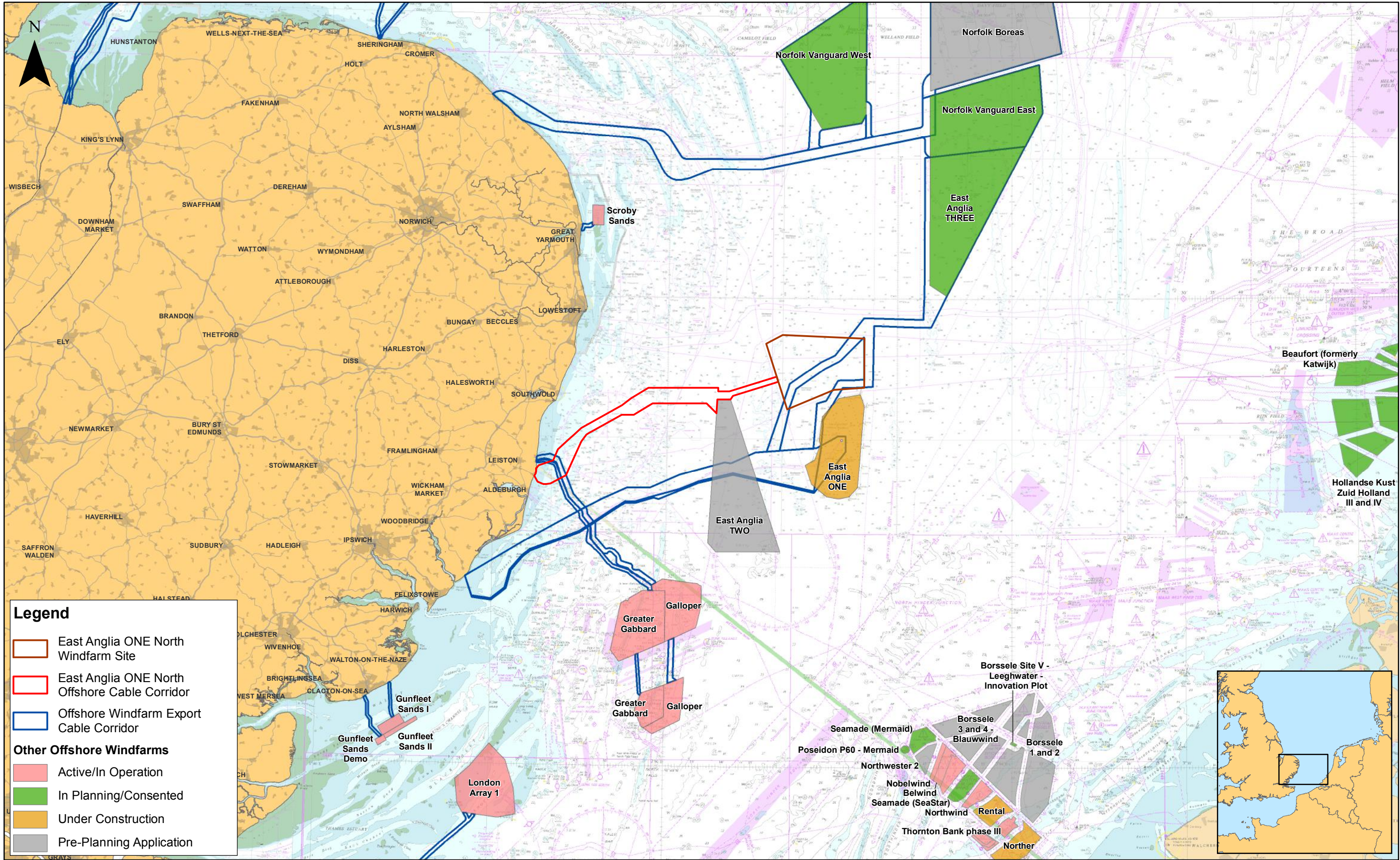
Chapter 17


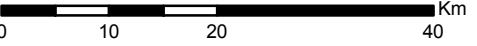
Infrastructure and Other Users

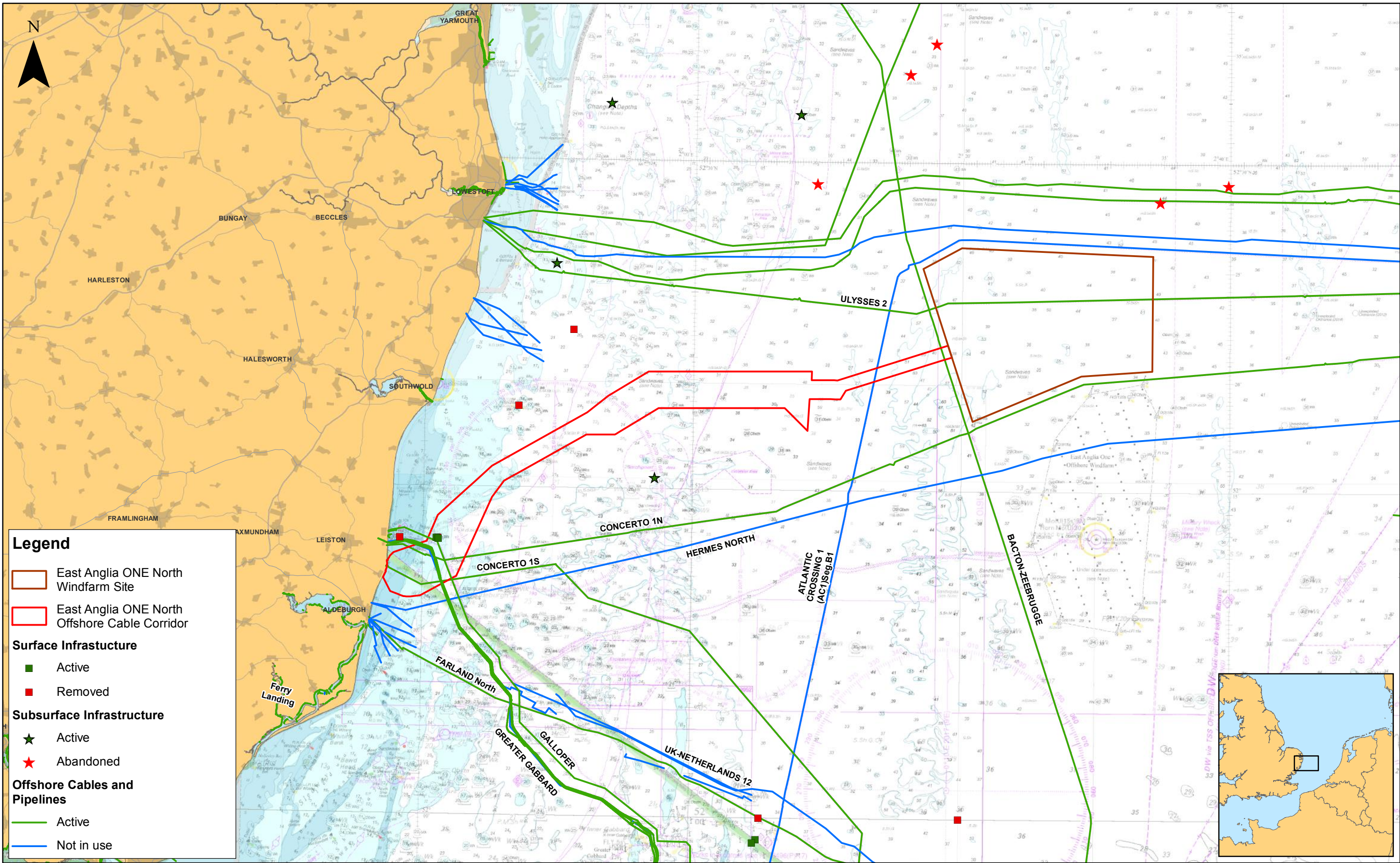
Figures

Preliminary Environmental Information
Volume 2

This page is intentionally blank



				1:700,000 Scale @ A3				East Anglia ONE North Offshore Windfarm Developments		Drg No	EA1N-DEV-DRG-IBR-000362	
120/11/2018FCFirst Issue.				Prepared:	FC	Source: © 4C Offshore, 2018. © The Crown Estate, 2017. Charts from MarineFIND.co.uk Licence No EK001-0645-MF0095. Not to be used for navigation. This map has been produced to the latest known information at the time of issue, and has been produced for your information only. Please consult with the SPR Offshore GIS team to ensure the content is still current before using the information contained on this map. To the fullest extent permitted by law, we accept no responsibility or liability (whether in contract, tort (including negligence) or otherwise in respect of any errors or omissions in the information contained in the map and shall not be liable for any loss, damage or expense caused by such errors or omissions.				Rev	1	Datum: WGS 1984 Projection: Zone 31N
				Checked:	BK					Date	20/11/18	
				Approved:	PP					Figure	17.1	



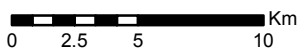
1	21/11/2018	AB	First Issue.
Rev	Date	By	Comment

Prepared: AB

Checked: PM

Approved: PP

1:300,000
Scale @ A3

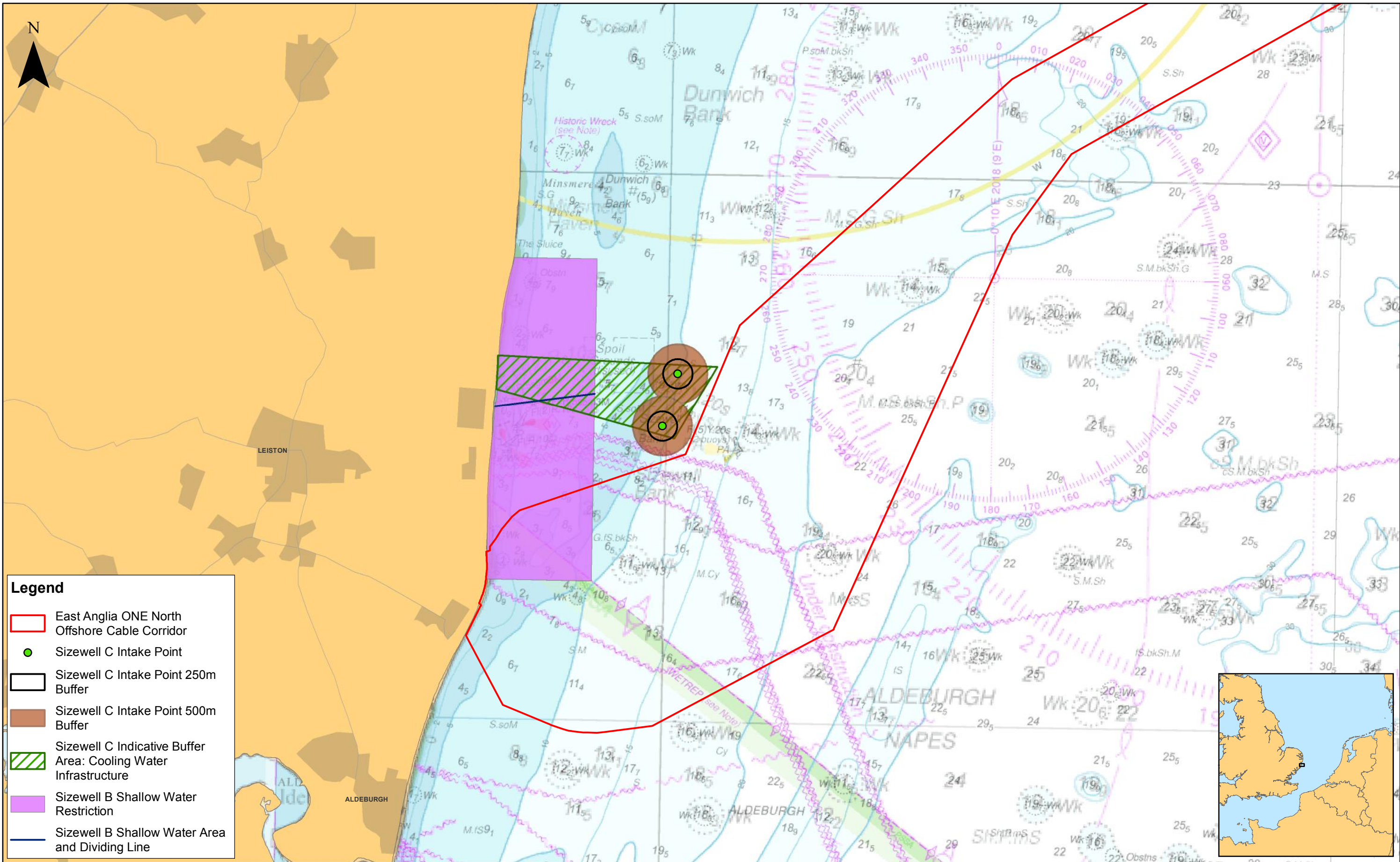


Source: © The Crown Estate, 2018. © Oil & Gas UK Ltd, 2018. Data provided by MarineFind, 2017. Charts from MarineFind.co.uk
© Licence No EX001-0845-MF008. Not to be used for navigation.
This map has been produced to the latest known information at the time of issue, and has been produced for your information only.
Please consult with the SPR Offshore GIS team to ensure the information contained on this map.
To the fullest extent permitted by law, we accept no responsibility or liability (whether in contract, tort (including negligence) or otherwise in respect of any errors or omissions in the information contained in the map and shall not be liable for any loss, damage or expense caused by such errors or omissions.

East Anglia ONE North

Other Offshore Infrastructure

Drg No	EA1N-DEV-DRG-IBR-000363		
Rev	1	Datum: WGS 1984 Projection: Zone 31N	
Date	21/11/18		
Figure	17.2		



Legend

- East Anglia ONE North Offshore Cable Corridor
- Sizewell C Intake Point
- Sizewell C Intake Point 250m Buffer
- Sizewell C Intake Point 500m Buffer
- Sizewell C Indicative Buffer Area: Cooling Water Infrastructure
- Sizewell B Shallow Water Restriction
- Sizewell B Shallow Water Area and Dividing Line



1	21/11/2018	AB	First Issue.
Rev	Date	By	Comment

Prepared: AB
Checked: PM
Approved: PP

1:60,000
Scale @ A3

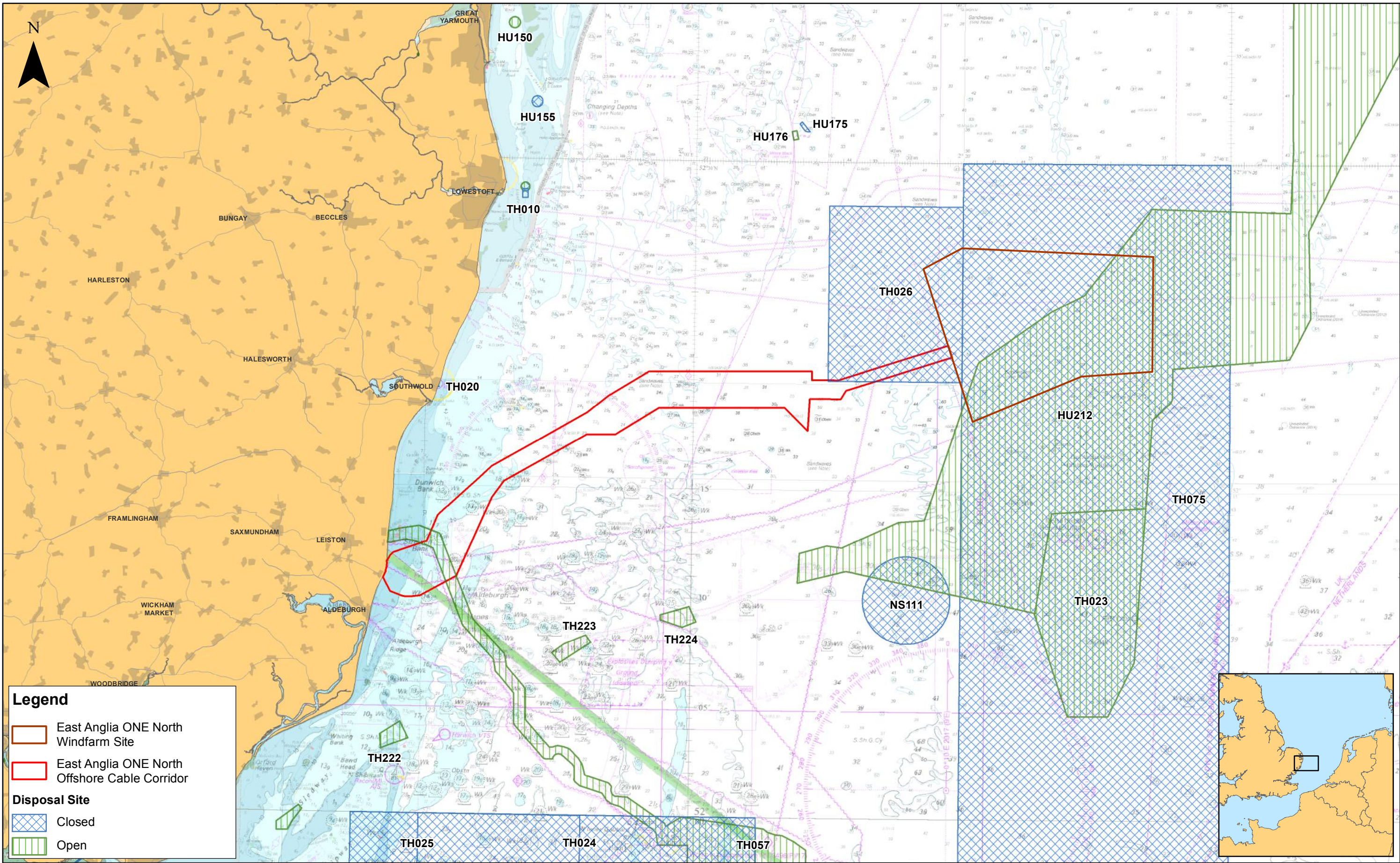
0 0.5 1 2 Km



Source: © The Crown Estate, 2018. Data provided by MarineFind, 2017. Charts from MarineFind.co.uk © Licence No EK001-0645-MF0095.
Not to be used for navigation.
This map has been produced to the latest known information at the time of issue, and has been produced for your information only.
Please consult with the SPN Offshore GIS team to ensure the content is still current before using the information contained on this map.
To the fullest extent permitted by law, we accept no responsibility or liability (whether in contract, tort (including negligence) or otherwise in respect of any errors or omissions in the information contained in the map and shall not be liable for any loss, damage or expense caused by such errors or omissions.

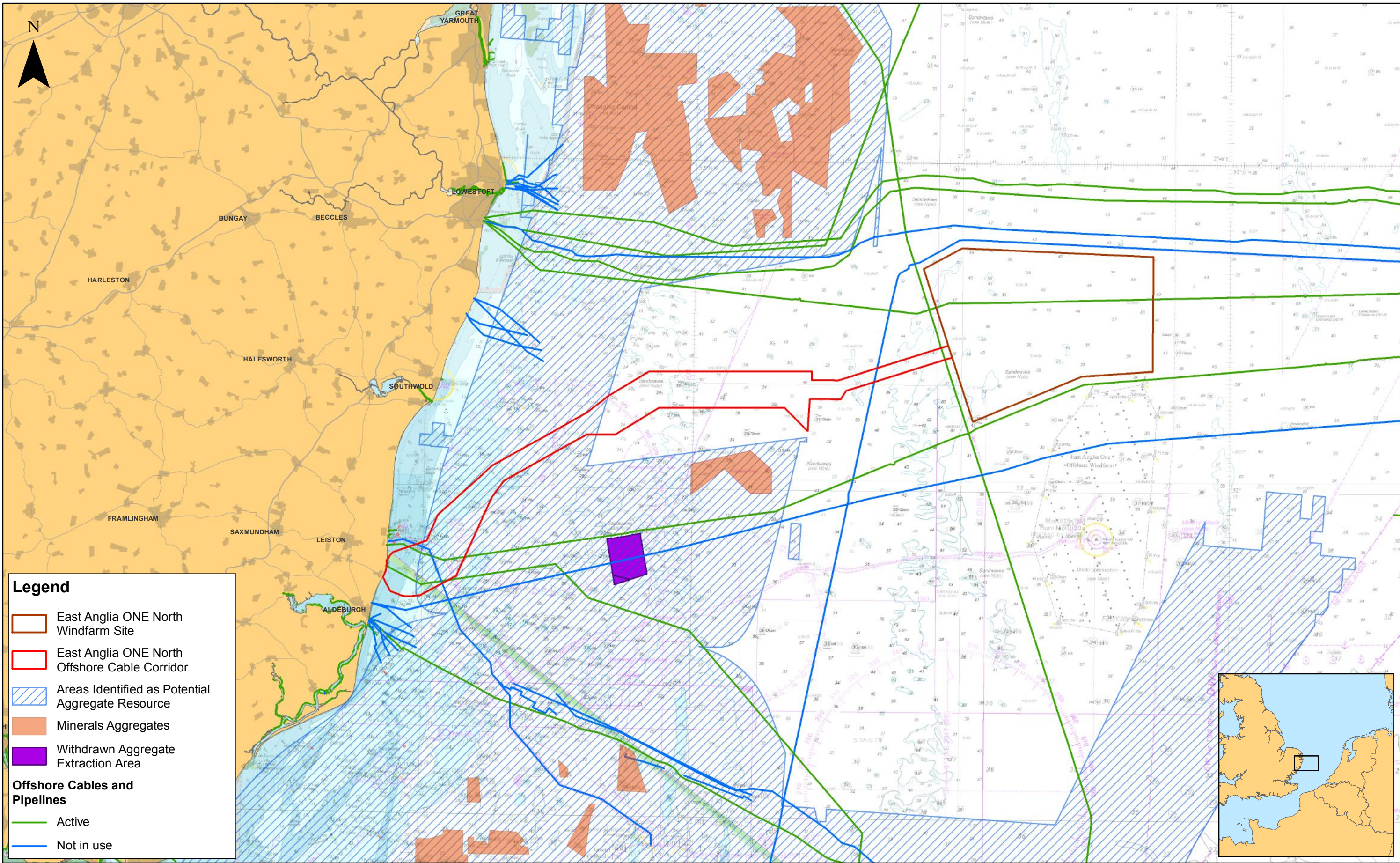
East Anglia ONE North


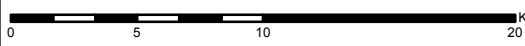
EDF Offshore Infrastructure and Management Areas

Drg No	EA1N-DEV-DRG-IBR-000366		
Rev	1	Datum: WGS 1984 Projection: Zone 31N	
Date	21/11/18		
Figure	17.3		



 SCOTTISHPOWER RENEWABLES							1:300,000		East Anglia ONE North Marine Disposal Activity	Drg No	EA1N-DEV-DRG-IBR-000364	
					Prepared:	AB	Scale @ A3			Rev	1	Datum: WGS 1984 Projection: Zone 31N
	1	21/11/2018	AB	First Issue.	Checked:	PM	<small>Source: © The Crown Estate, 2018. © Cefas, 2017. Charts from MarineFIND.co.uk © Licence No EK001-0645-MF0095. Not to be used for navigation. This map has been produced to the latest known information at the time of issue, and has been produced for your information only. Please consult with the SPR Offshore GIS team to ensure the content is still current before using the information contained on this map. To the fullest extent permitted by law, we accept no responsibility or liability (whether in contract, tort (including negligence) or otherwise in respect of any errors or omissions in the information contained in the map and shall not be liable for any loss, damage or expense caused by such errors or omissions.</small>					
	Rev	Date	By	Comment	Approved:	PP				Date	21/11/18	
									Figure	17.4		



				1:300,000 Scale @ A3				East Anglia ONE North Aggregates: Licenced Areas and Potential Resource		Drg No	EA1N-DEV-DRG-IBR-000365	
121/11/2018ABFirst Issue.				Prepared:	AB	Checked:		PM		Rev	1	Datum: WGS 1984 Projection: Zone 31N
RevDateByComment				Approved:		PP				Date	21/11/18	
										Figure	17.5	

This page is intentionally blank