



**SCOTTISHPOWER  
RENEWABLES**

# **East Anglia ONE North Offshore Windfarm**

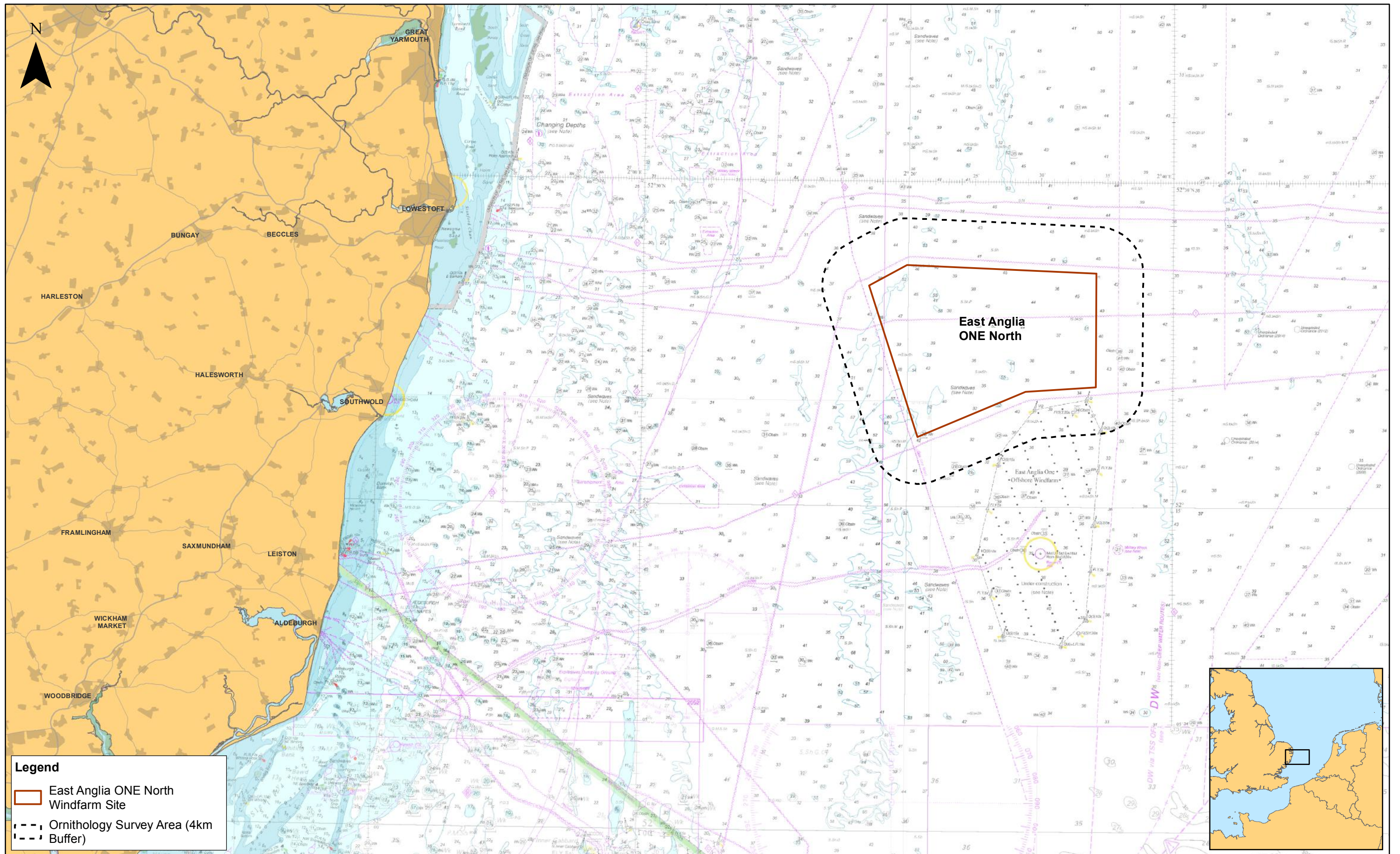
## **Chapter 12**

Ornithology

Figures

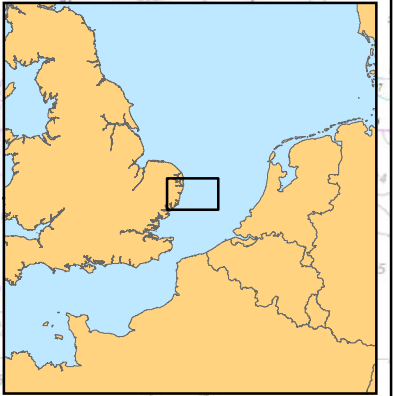
Preliminary Environmental Information  
Volume 2

**This page is intentionally blank**



**Legend**

- East Anglia ONE North Windfarm Site
- Ornithology Survey Area (4km Buffer)



Rev	Date	By	Comment
1	03/12/2018	FC	First Issue.

Scale @ A3 1:300,000

0 3.5 7 14 Km

Prepared: FC  
Checked: PM  
Approved: PP

Source: © Bibby HydroMap Survey, 2018. © The Crown Estate, 2018. Charts from MarineFIND.co.uk Licence No. EX001-0645-MF0095. Not to be used for navigation.  
This map has been produced to the latest known information at the time of issue, and has been produced for your information only. Please consult with the SPR Offshore GIS team to ensure the content is still current before using the information contained on this map.  
To the fullest extent permitted by law, we accept no responsibility or liability (whether in contract, tort (including negligence) or otherwise in respect of any errors or omissions in the information contained in the map and shall not be liable for any loss, damage or expense caused by such errors or omissions.

**East Anglia ONE North**  
Ornithology Study Area

<b>Drg No</b>	EA1N-DEV-DRG-IBR-000467
<b>Rev</b>	1
<b>Date</b>	03/12/18
<b>Figure</b>	12.1
<b>Datum:</b>	WGS 1984
<b>Projection:</b>	Zone 31N

**This page is intentionally blank**