

East Anglia ONE North Offshore Windfarm

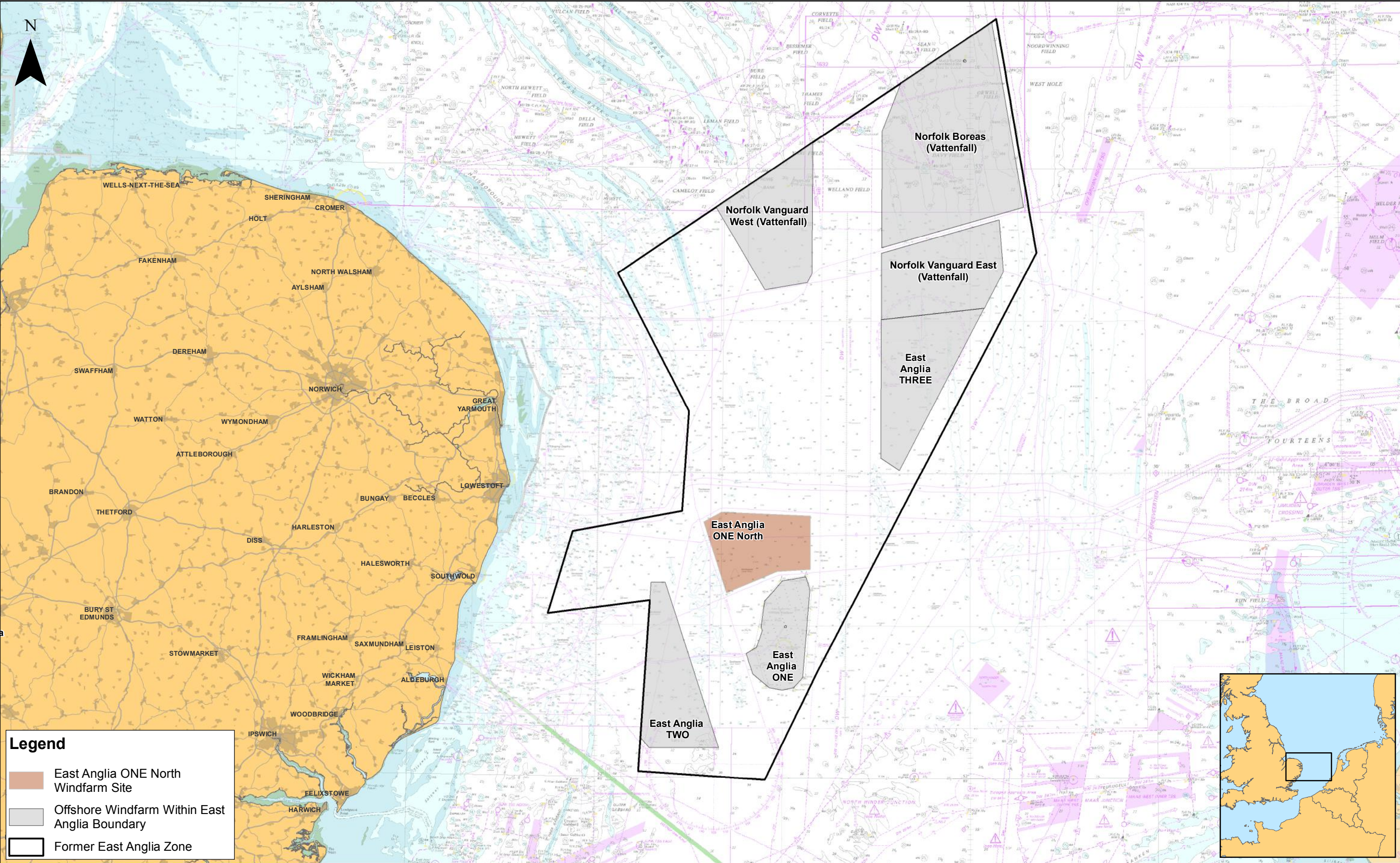
Chapter 4

Site Selection and Assessment of Alternatives

Figures

Preliminary Environmental Information
Volume 2

This page is intentionally blank



Legend

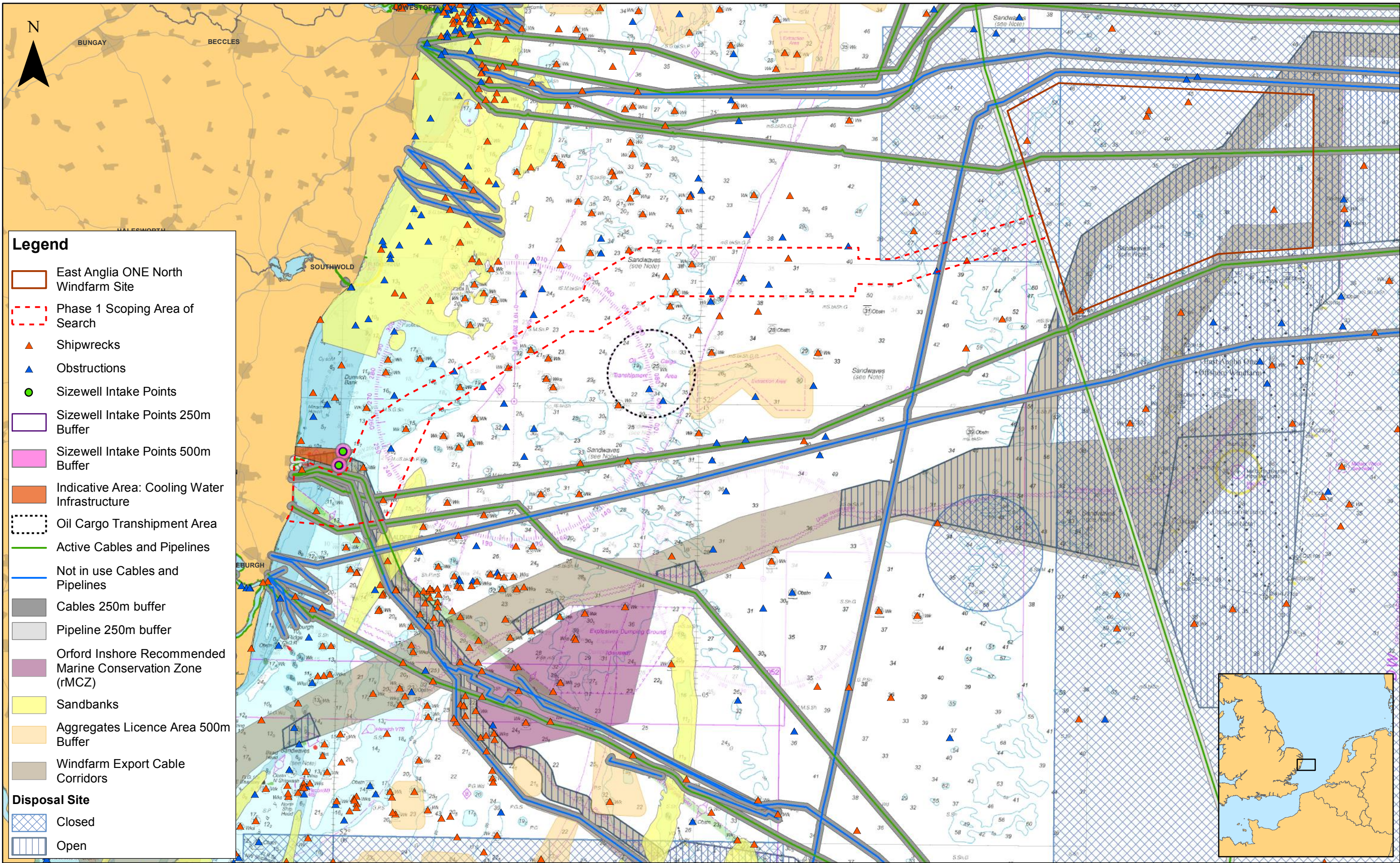
East Anglia ONE North Windfarm Site

Offshore Windfarm Within East Anglia Boundary

Former East Anglia Zone

<div><div><div></div><div>SCOTTISHPOWER RENEWABLES</div></div></div>				1:650,000 Scale @ A3		0 5 10 20 Km		<div>East Anglia ONE North</div> <div>East Anglia ONE North Offshore Windfarm Site and Former East Anglia Zone</div>			Drg No EA1N-DEV-DRG-IBR-000428		Datum: WGS 1984 Projection: Zone 31N	
1 26/11/2018 FC First Issue.				Prepared: FC	Checked: PM	<div>Source: © The Crown Estate, 2017. Charts from MarineFIND.co.uk Licence No EK001-0645-MF0095. Not to be used for navigation.</div> <div>This map has been produced to the latest known information at the time of issue, and has been produced for your information only. Please consult with the SPR Offshore GIS team to ensure the content is still current before using the information contained on this map. To the fullest extent permitted by law, we accept no responsibility or liability (whether in contract, tort (including negligence) or otherwise) in respect of any errors or omissions in the information contained in the map and shall not be liable for any loss, damage or expense caused by such errors or omissions.</div>		Rev		Date	1			
				Approved: PP				Figure		4.1				

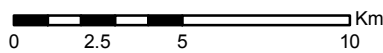
D:\Box Sync\IPB4842 EA 1N and 2\IPB4842 EA 1N and 2 Team\E. TECHNICAL DATA\E03 GIS\EA1N\Figures\PEIR\Chapter_4_SiteSelection\Fig_4_1_EA1N_EAWindfarmProjects_RH_20181126.mxd



1	26/11/2018	FC	First Issue.
Rev	Date	By	Comment

Prepared:	FC
Checked:	PM
Approved:	PP

1:225,000
Scale @ A3

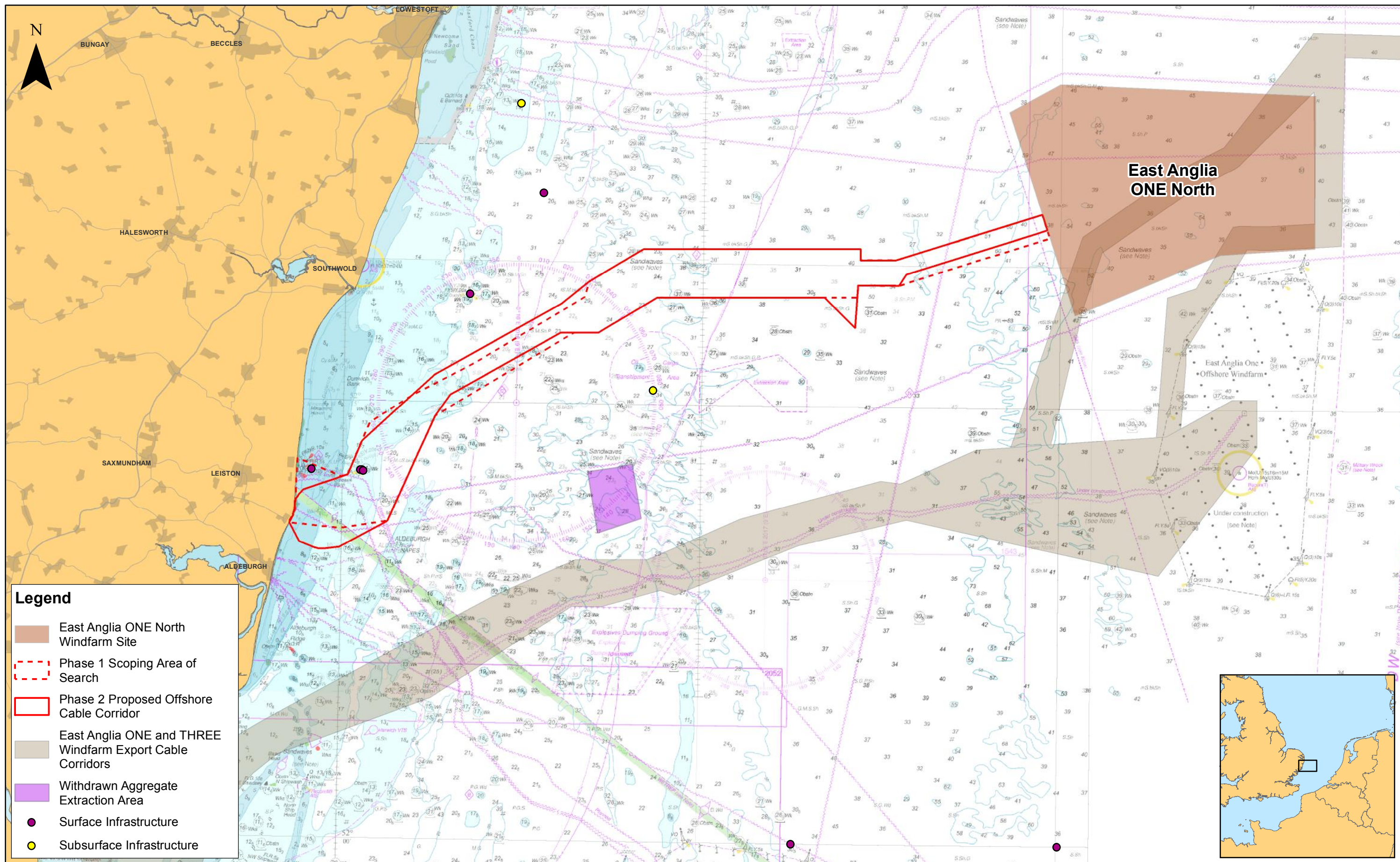


Source: © The Crown Estate, 2018. © Cefas, 2017. Data provided by MarineFind, 2017. Charts from MarineFind.co.uk © Licence No EK001-0645-MF0095.
Not to be used for navigation.
This map has been produced to the latest known information at the time of issue, and has been produced for your information only.
Please consult with the SPR Offshore GIS team to ensure the content is still current before using the information contained on this map.
To the fullest extent permitted by law, we accept no responsibility or liability (whether in contract, tort (including negligence) or otherwise in respect of any errors or omissions in the information contained in the map and shall not be liable for any loss, damage or expense caused by such errors or omissions.

East Anglia ONE North

Phase 1 - East Anglia ONE North Scoping Offshore Cable Corridor and Constraints

Drg No	EA1N-DEV-DRG-IBR-000429		
Rev	1	Datum: WGS 1984 Projection: Zone 31N	
Date	26/11/18		
Figure	4.2		



Legend

East Anglia ONE North Windfarm Site

Phase 1 Scoping Area of Search

Phase 2 Proposed Offshore Cable Corridor

East Anglia ONE and THREE Windfarm Export Cable Corridors

Withdrawn Aggregate Extraction Area

Surface Infrastructure

Subsurface Infrastructure

<div><div><div></div><div>SCOTTISHPOWER RENEWABLES</div></div></div>			
1	26/11/2018	FC	First Issue.
Rev	Date	By	Comment

Prepared:	FC
Checked:	PM
Approved:	PP

1:225,000

Scale @ A3

0

2.5

5

10

Km

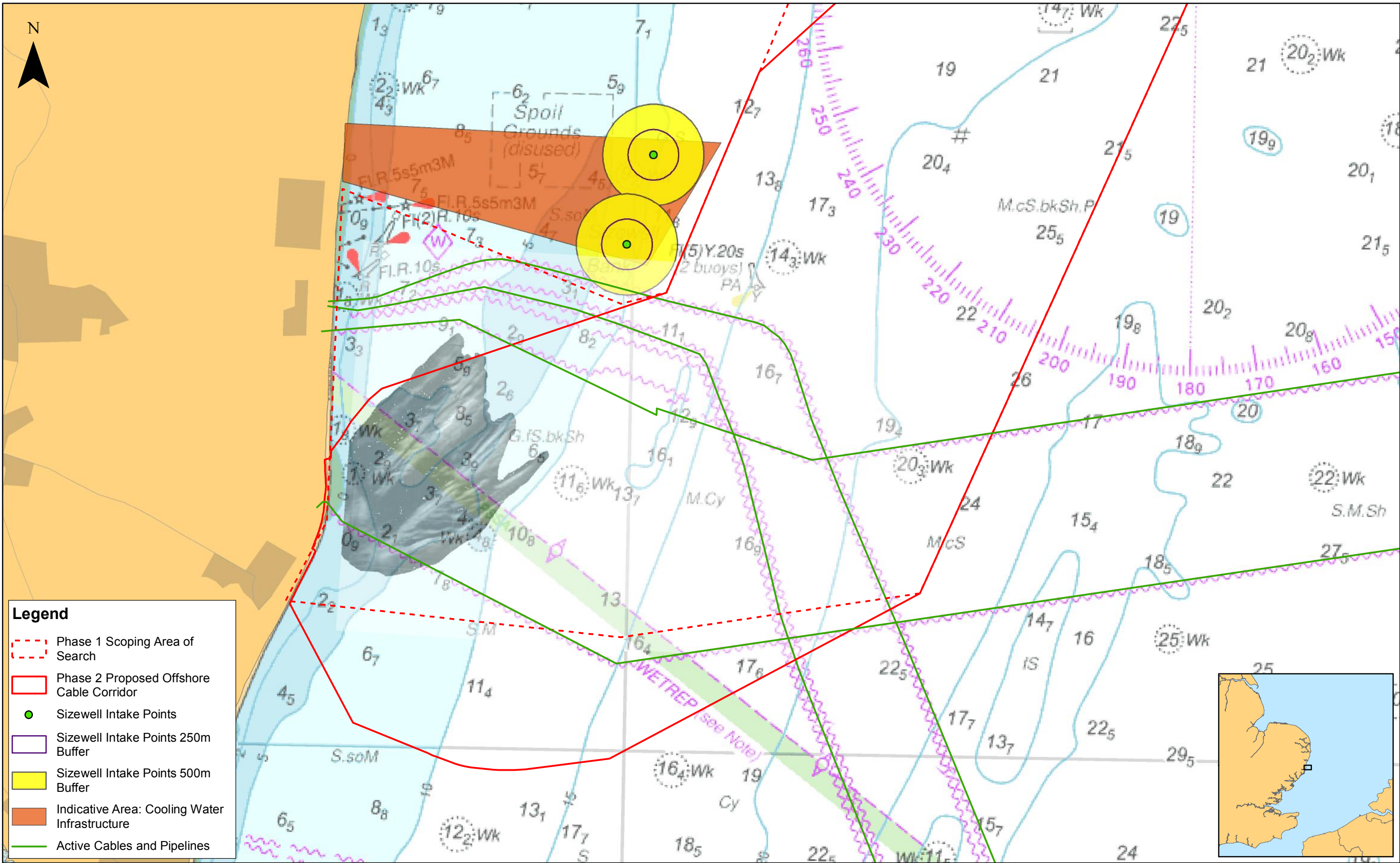
This map has been produced to the latest known information at the time of issue, and has been produced for your information only. Please consult with the SPR Offshore GIS team to ensure the content is still current before using the information contained on this map. To the fullest extent permitted by law, we accept no responsibility or liability (including negligence) or otherwise in respect of any errors or omissions in the information contained in the map and shall not be liable for any loss, damage or expense caused by such errors or omissions.

East Anglia ONE North

Phase 2 - Post-Scoping Refinements to the East Anglia ONE North Offshore Cable Corridor

Drg No	EA1N-DEV-DRG-IBR-000430		
Rev	1	Datum: WGS 1984	
Date	26/11/18	Projection: Zone 31N	
Figure	4.3		

D:\Box Sync\PB4842 EA 1N and 2\PB4842 EA 1N and 2 Team\E. TECHNICAL DATA\E03 GIS\EA1N\Figures\PEIR\Chapter_4_SiteSelection\Fig_4_3_EA1N_CableCorridorRefinements_RH_20181126.mxd



Legend

Phase 1 Scoping Area of Search

Phase 2 Proposed Offshore Cable Corridor


Sizewell Intake Points

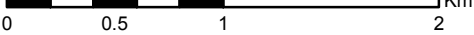
Sizewell Intake Points 250m Buffer

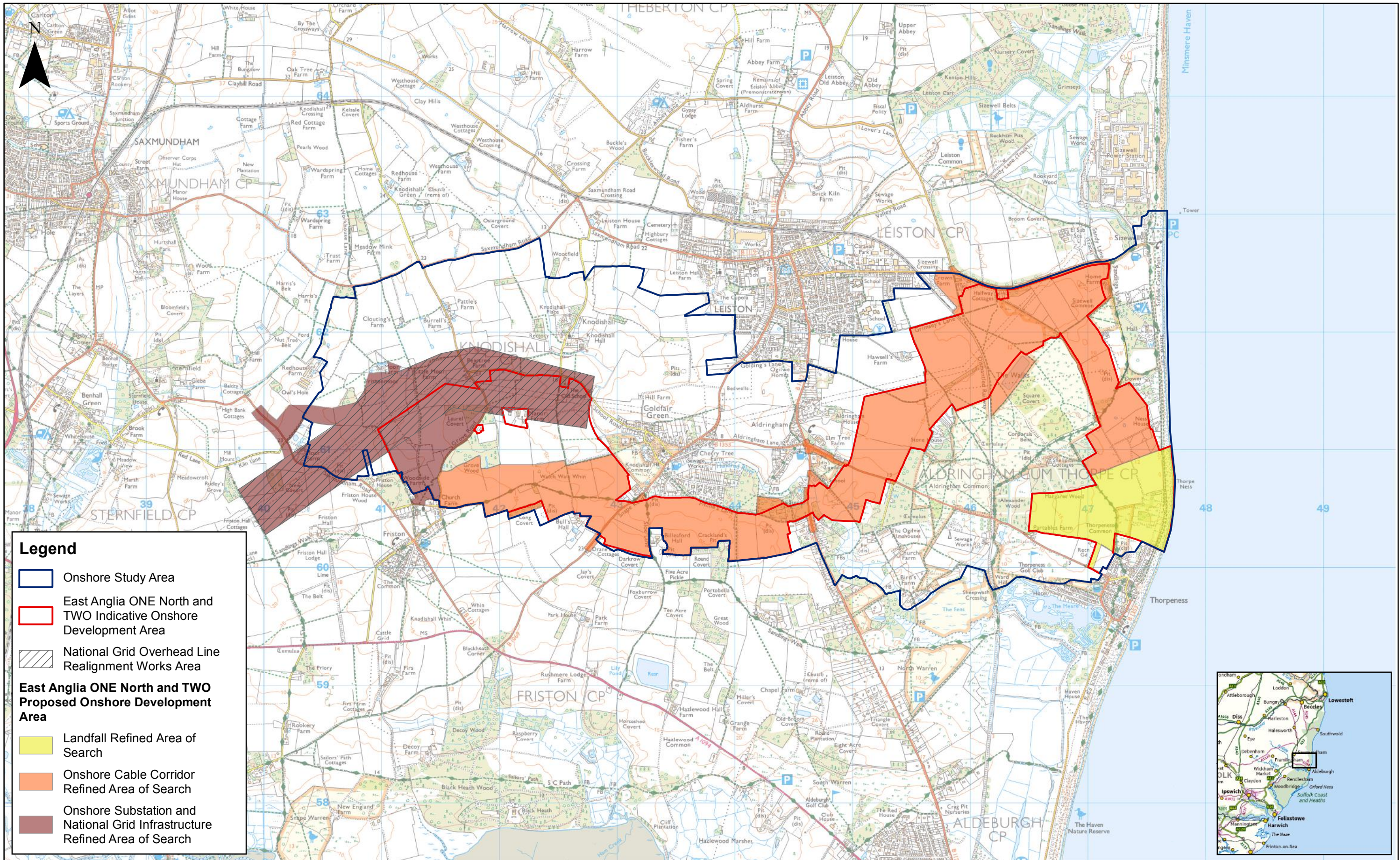
Sizewell Intake Points 500m Buffer

Indicative Area: Cooling Water Infrastructure

Active Cables and Pipelines



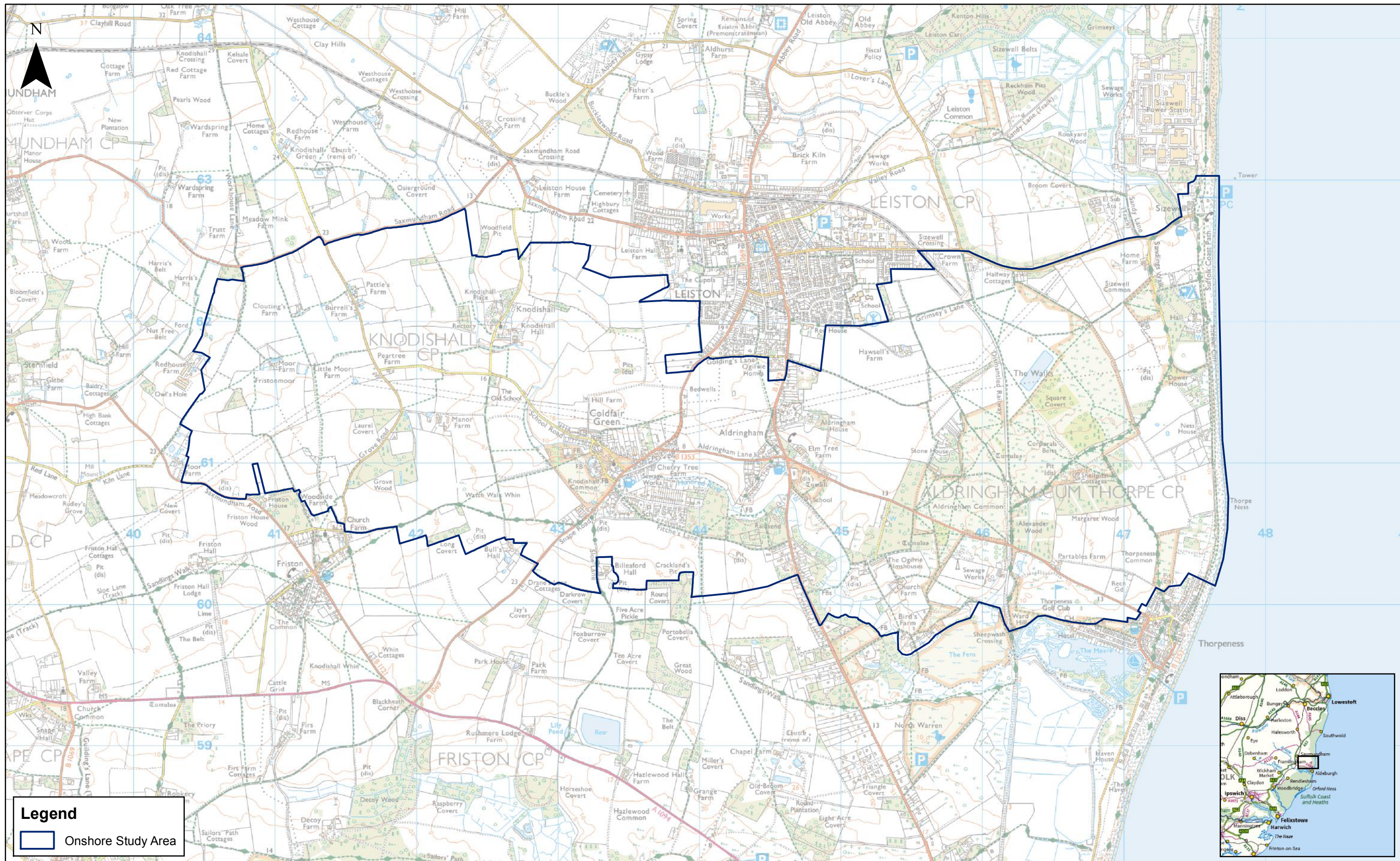
						1:35,000		East Anglia ONE North East Anglia ONE North Offshore Cable Corridor Nearshore Refinements	Drg No	EA1N-DEV-DRG-IBR-000431	
				Prepared:	FC	Scale @ A3			Rev	1	Datum: WGS 1984 Projection: Zone 31N
1	26/11/2018	FC	First Issue.	Checked:	PM	<small>Source: Data provided by MarineFind, 2018. Charts from MarineFind.co.uk © Licence No EK001-0645-MF0095. Not to be used for navigation. This map has been produced to the latest known information at the time of issue, and has been produced for your information only. Please consult with the SPR Offshore GIS team to ensure the content is still current before using the information contained on this map. To the fullest extent permitted by law, we accept no responsibility or liability (whether in contract, tort (including negligence) or otherwise in respect of any errors or omissions in the information contained in the map and shall not be liable for any loss, damage or expense caused by such errors or omissions.</small>					
Rev	Date	By	Comment	Approved:	PP				Date	26/11/18	



1	26/11/2018	FC	First Issue.	Prepared:	FC
Rev	Date	By	Comment	Checked:	PW
				Approved:	AH

1:30,000	Scale @ A3
Source: © Crown copyright and database rights 2018. Ordnance Survey 0100031673.	
This map has been produced to the latest known information at the time of issue, and has been produced for your information only. Please consult with the SPR Offshore GIS team to ensure the content is still current before using the information contained on this map. To the fullest extent permitted by law, we accept no responsibility or liability (whether in contract, tort (including negligence) or otherwise in respect of any errors or omissions in the information contained in the map and shall not be liable for any loss, damage or expense caused by such errors or omissions.	

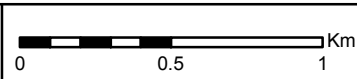
East Anglia ONE North		Drg No	EA1N-DEV-DRG-IBR-000432	
East Anglia ONE North and TWO Indicative Onshore Development Area		Rev	1	Coordinate System: BNG Datum: OSGB36
		Date	26/11/18	
		Figure	4.5	



1	26/11/2018	FC	First Issue.
Rev	Date	By	Comment

Prepared:	FC
Checked:	PW
Approved:	AH

1:25,000
Scale @ A3

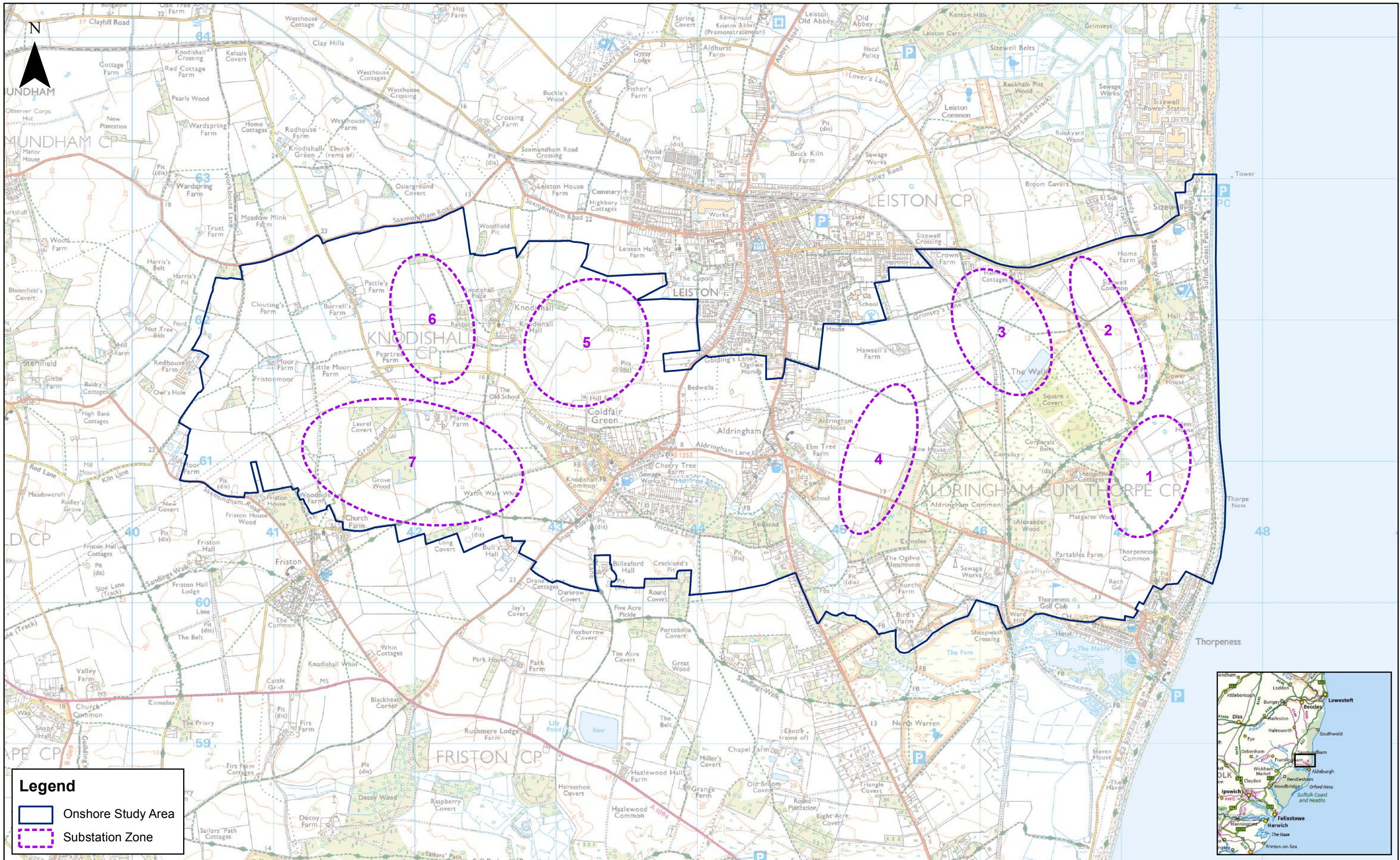


Source: © Crown copyright and database rights 2018. Ordnance Survey 0100031673.
This map has been produced to the latest known information at the time of issue, and has been produced for your information only.
Please consult with the SPR Offshore GIS team to ensure the content is still current before using the information contained on this map.
To the fullest extent permitted by law, we accept no responsibility or liability (whether in contract, tort (including negligence) or otherwise) in respect of any errors or omissions in the information contained in the map and shall not be liable for any loss, damage or expense caused by such errors or omissions.

East Anglia ONE North

East Anglia ONE North and TWO Onshore
Site Selection Study Area

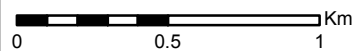
Drg No	EA1N-DEV-DRG-IBR-000433	Coordinate System: BNG Datum: OSGB36
Rev	1	
Date	26/11/18	
Figure	4.6	



1	26/11/2018	FC	First Issue.
Rev	Date	By	Comment

Prepared: FC
Checked: PW
Approved: AH

1:25,000
Scale @ A3

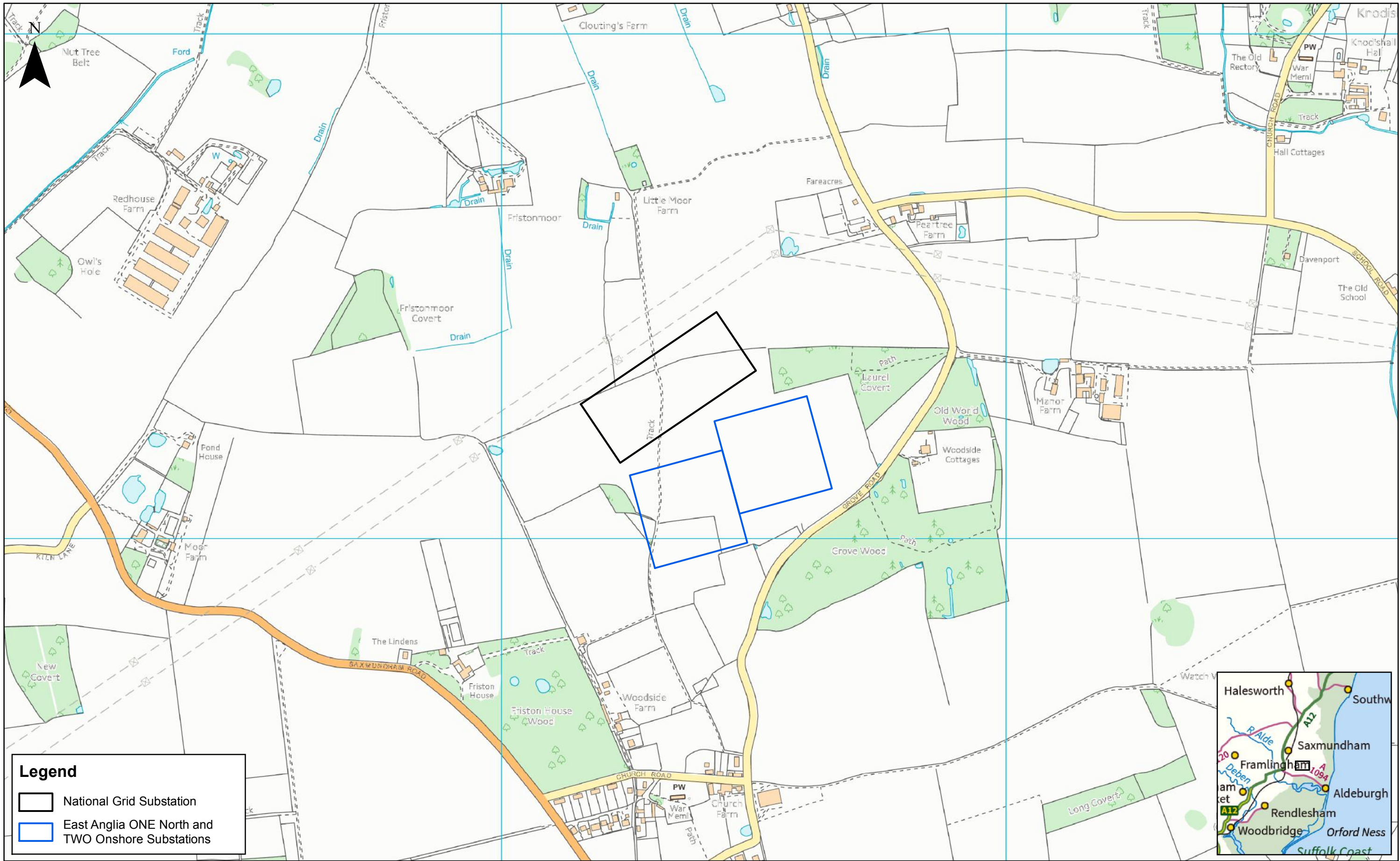




Source: © Crown copyright and database rights 2018. Ordnance Survey 0100031673.
This map has been produced to the latest known information at the time of issue, and has been produced for your information only.
Please consult with the SPR Offshore GIS team to ensure the content is still current before using the information contained on this map.
To the fullest extent permitted by law, we accept no responsibility or liability (whether in contract, tort (including negligence) or otherwise in respect of any errors or omissions in the information contained in the map and shall not be liable for any loss, damage or expense caused by such errors or omissions.

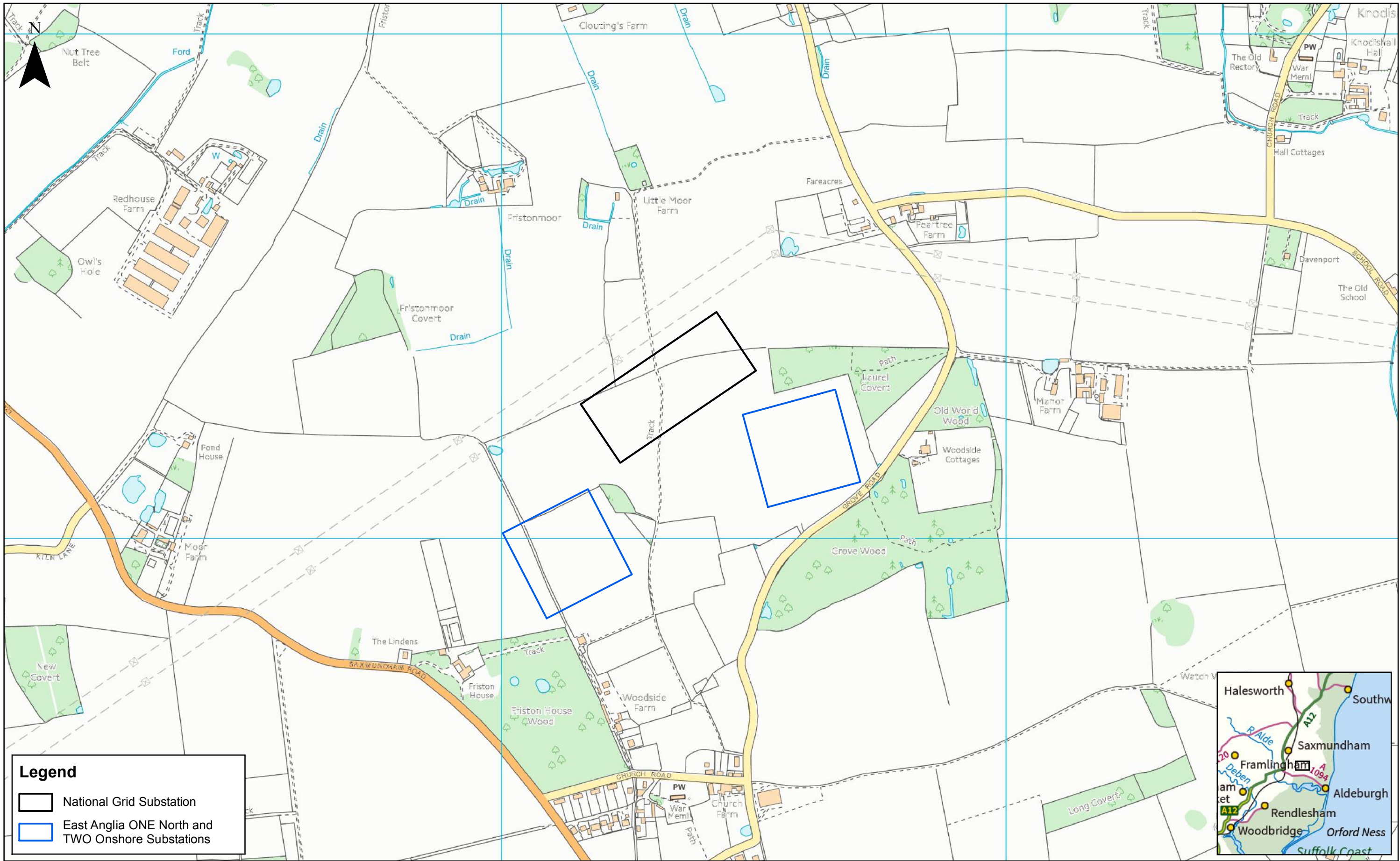
East Anglia ONE North



East Anglia ONE North and TWO Onshore Substation Zones

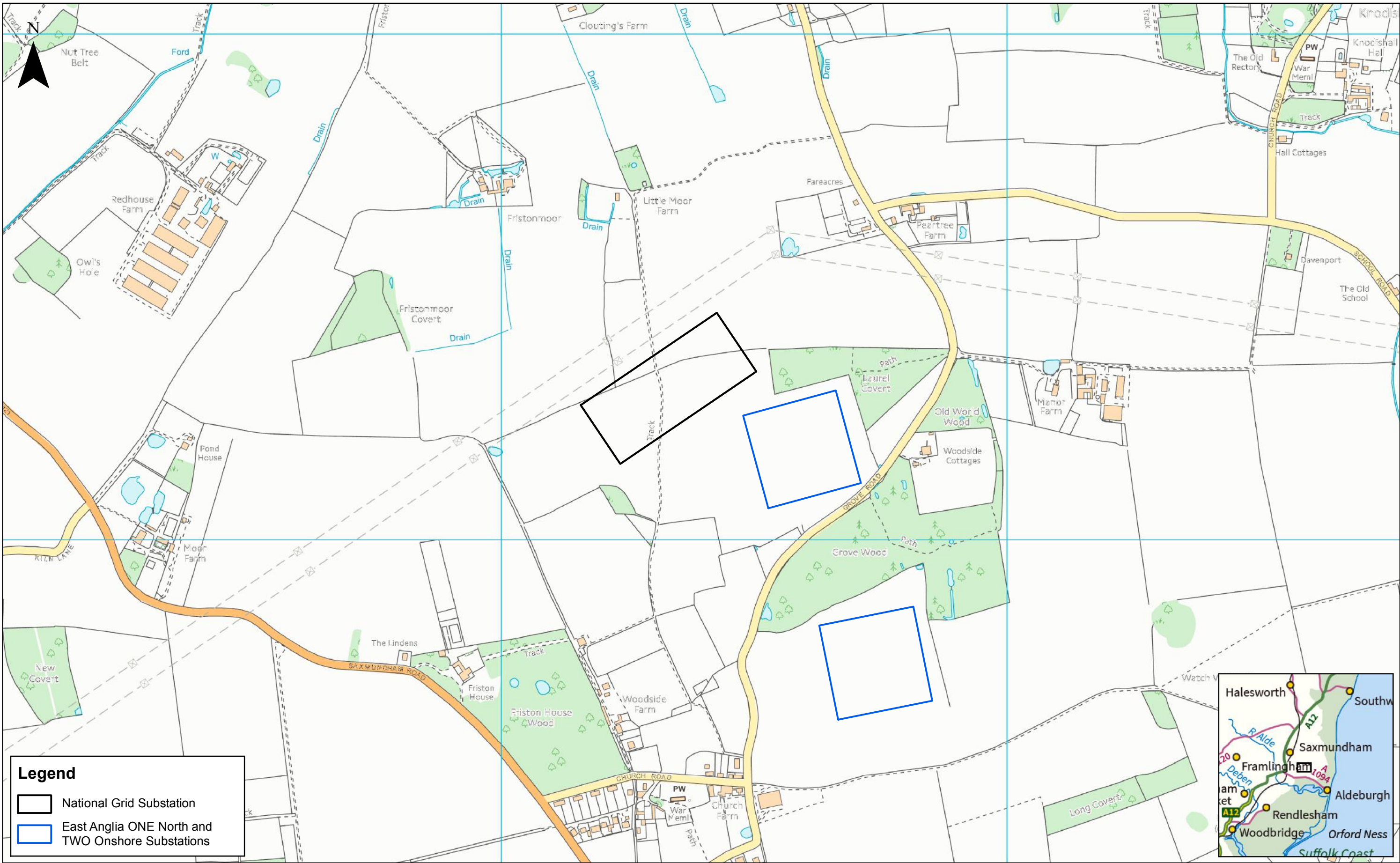
Drg No	EA1N-DEV-DRG-IBR-000434	Coordinate System: BNG Datum: OSGB36
Rev	1	
Date	26/11/18	
Figure	4.7	



 SCOTTISHPOWER RENEWABLES							1:7,000 Scale @ A3		East Anglia ONE North East Anglia ONE North and TWO Onshore Substation Zone 7 - Alternative Arrangement Option 1	Drg No	EA1N-DEV-DRG-IBR-000435	
					Prepared:	FC				Rev	1	Coordinate System: BNG Datum: OSGB36
	1	26/11/2018	FC	First Issue.	Checked:	PW	<small>Source: © Crown copyright and database rights 2018. Ordnance Survey 0100031673. This map has been produced to the latest known information at the time of issue, and has been produced for your information only. Please consult with the SHP Onshore GIS team to ensure the content is still current before using the information contained on this map. To the fullest extent permitted by law, we accept no responsibility or liability (whether in contract, tort (including negligence) or otherwise in respect of any errors or omissions in the information contained in the map and shall not be liable for any loss, damage or expense caused by such errors or omissions.</small>					
	Rev	Date	By	Comment	Approved:	AH						



							1:7,000		East Anglia ONE North East Anglia ONE North and TWO Onshore Substation Zone 7 - Alternative Arrangement Option 2	Drg No	EA1N-DEV-DRG-IBR-000436	
					Prepared:	FC	Scale @ A3			Rev	1	Coordinate System: BNG Datum: OSGB36
	1	26/11/2018	FC	First Issue.	Checked:	PW	<small>Source: © Crown copyright and database rights 2018. Ordnance Survey 0100031673. This map has been produced to the latest known information at the time of issue, and has been produced for your information only. Please consult with the SHP Onshore GIS team to ensure the content is still current before using the information contained on this map. To the fullest extent permitted by law, we accept no responsibility or liability (whether in contract, tort (including negligence) or otherwise in respect of any errors or omissions in the information contained in the map and shall not be liable for any loss, damage or expense caused by such errors or omissions.</small>		Date	26/11/18		
	Rev	Date	By	Comment	Approved:	AH			Figure	4.9		





1

27/11/2018

FC

First Issue.

Rev

Date

By

Comment

1	27/11/2018	FC	First Issue.
Rev	Date	By	Comment

Prepared:	FC
Checked:	PW
Approved:	AH

1:7,000

Scale @ A3

0

200

400

Metres

This map has been produced to the latest known information at the time of issue, and has been produced for your information only. Please consult with the SPR Offshore GIS team to ensure the content is still current before using the information contained on this map. To the fullest extent permitted by law, we accept no responsibility or liability (whether in contract, tort (including negligence) or otherwise in respect of any errors or omissions in the information contained in the map and shall not be liable for any loss, damage or expense caused by such errors or omissions.

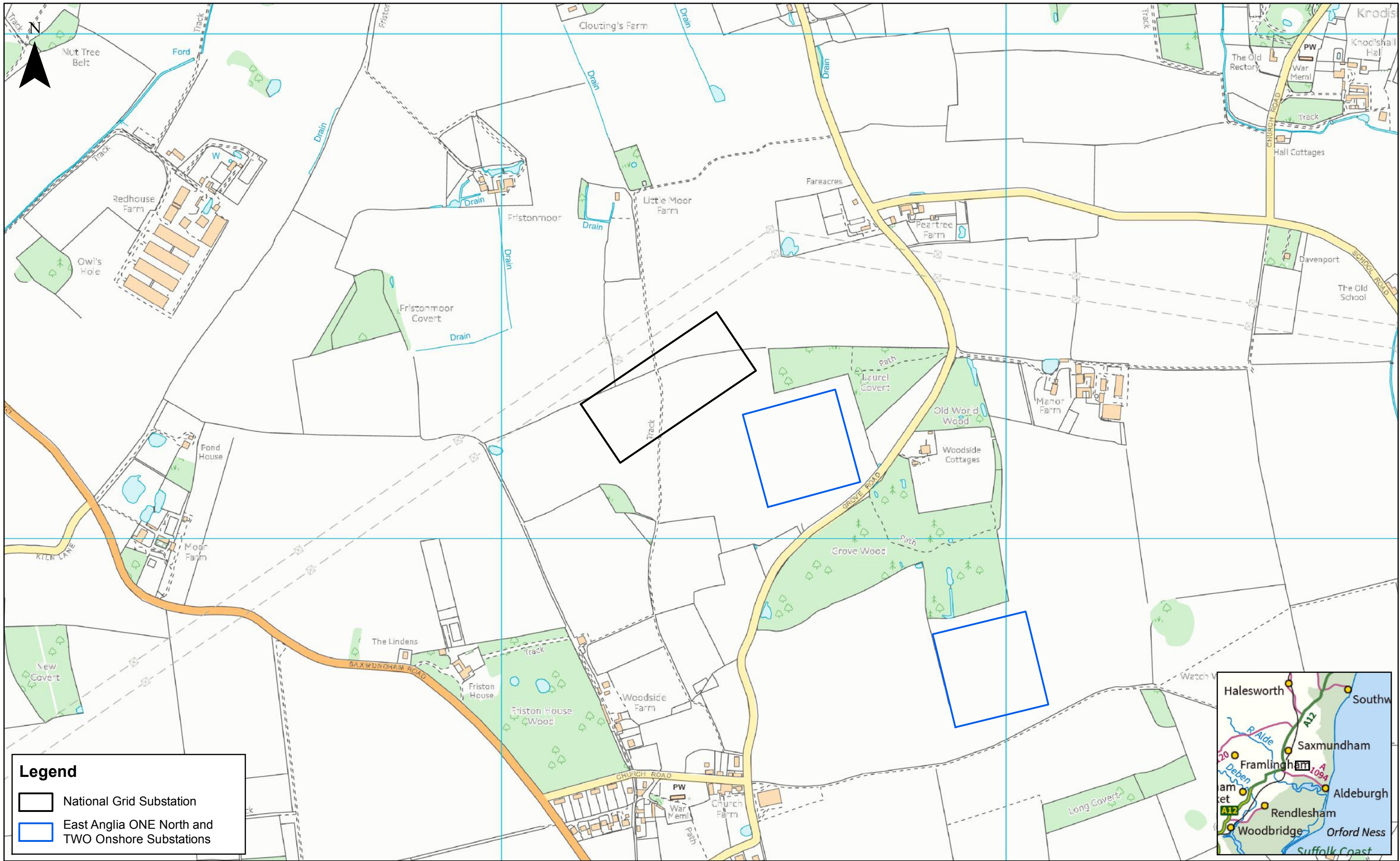
East Anglia ONE North


East Anglia ONE North and TWO North

Onshore Substation Zone 7 - Alternative

Arrangement Option 3

Drg No	EA1N-DEV-DRG-IBR-000437	
Rev	1	Coordinate System: BNG Datum: OSGB36
Date	27/11/18	
Figure	4.10	



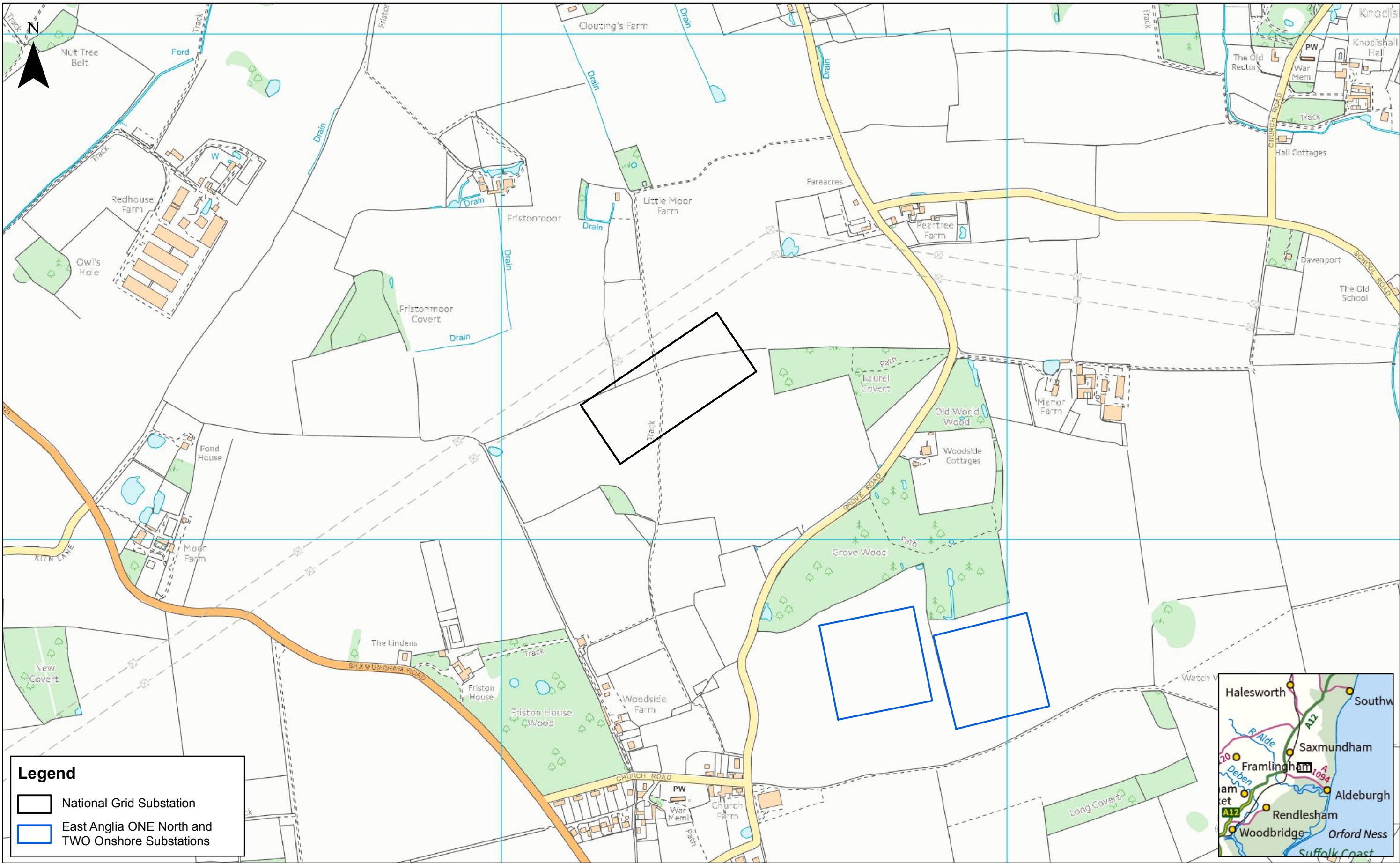



						1:7,000	
				Prepared:	FC	Scale @ A3	0 200 400 Metres
1	27/11/2018	FC	First Issue.	Checked:	PW	Source: © Crown copyright and database rights 2018. Ordnance Survey 0100031673. This map has been produced to the latest known information at the time of issue, and has been produced for your information only. Please consult with the SPR Offshore GIS team to ensure the content is still current before using the information contained on this map. To the fullest extent permitted by law, we accept no responsibility or liability (whether in contract, tort (including negligence) or otherwise in respect of any errors or omissions in the information contained in the map and shall not be liable for any loss, damage or expense caused by such errors or omissions.	
Rev	Date	By	Comment	Approved:	AH		

East Anglia ONE North

East Anglia ONE North and TWO Onshore Substation Zone 7 - Alternative Arrangement Option 4

Drg No	EA1N-DEV-DRG-IBR-000438	
Rev	1	Coordinate System: BNG
Date	27/11/18	Datum: OSGB36
Figure	4.11	



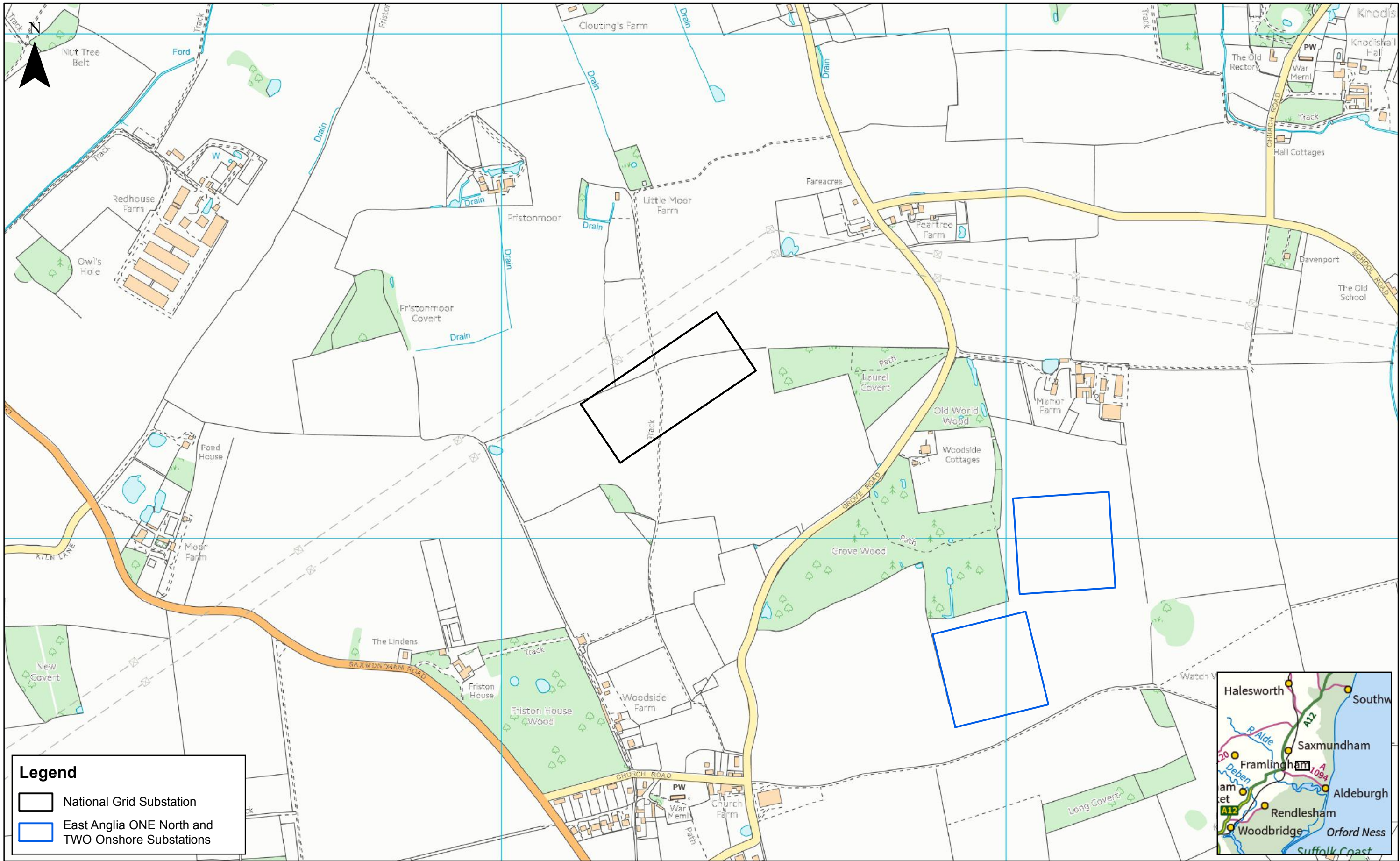



						1:7,000	
				Prepared:	FC	Scale @ A3	0 200 400 Metres
1	27/11/2018	FC	First Issue.	Checked:	PW	Source: © Crown copyright and database rights 2018. Ordnance Survey 0100031673. This map has been produced to the latest known information at the time of issue, and has been produced for your information only. Please consult with the SPR Offshore GIS team to ensure the content is still current before using the information contained on this map. To the fullest extent permitted by law, we accept no responsibility or liability (whether in contract, tort (including negligence) or otherwise in respect of any errors or omissions in the information contained in the map and shall not be liable for any loss, damage or expense caused by such errors or omissions.	
Rev	Date	By	Comment	Approved:	AH		

East Anglia ONE North

East Anglia ONE North and TWO Onshore Substation Zone 7 - Alternative Arrangement Option 5

Drg No	EA1N-DEV-DRG-IBR-000439	
Rev	1	Coordinate System: BNG
Date	27/11/18	Datum: OSGB36
Figure	4.12	





1	27/11/2018	FC	First Issue.	Checked:	PW
Rev	Date	By	Comment	Approved:	AH

1:7,000
Scale @ A3

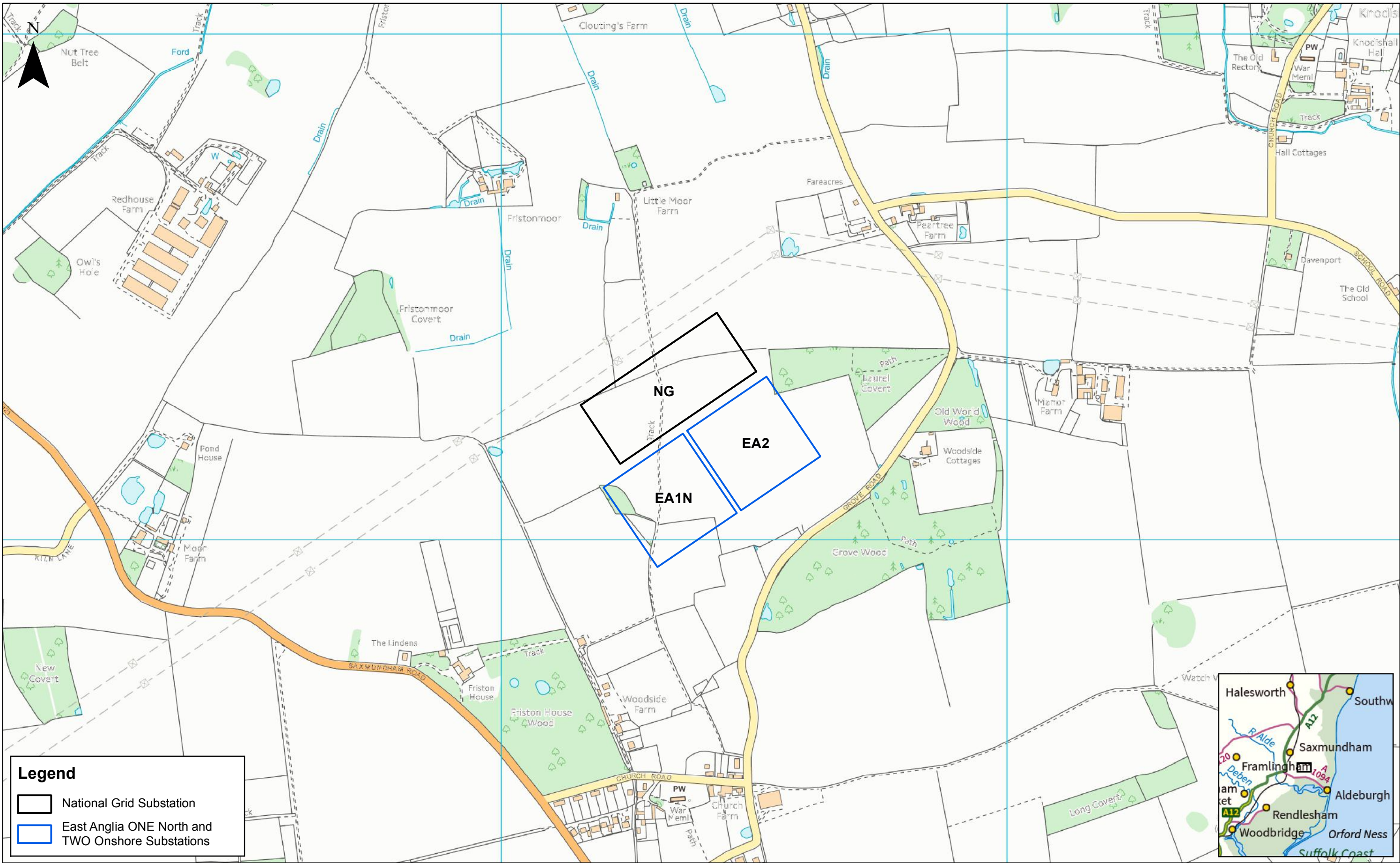
0 200 400 Metres

Source: © Crown copyright and database rights 2018. Ordnance Survey 0100031673.
This map has been produced to the latest known information at the time of issue, and has been produced for your information only. Please consult with the SPR Offshore GIS team to ensure the content is still current before using the information contained on this map.
To the fullest extent permitted by law, we accept no responsibility or liability (whether in contract, tort (including negligence) or otherwise in respect of any errors or omissions in the information contained in the map and shall not be liable for any loss, damage or expense caused by such errors or omissions.

East Anglia ONE North

East Anglia ONE North and TWO Onshore Substation Zone 7 - Alternative Arrangement Option 6

Drg No	EA1N-DEV-DRG-IBR-000440	
Rev	1	Coordinate System: BNG Datum: OSGB36
Date	27/11/18	
Figure	4.13	

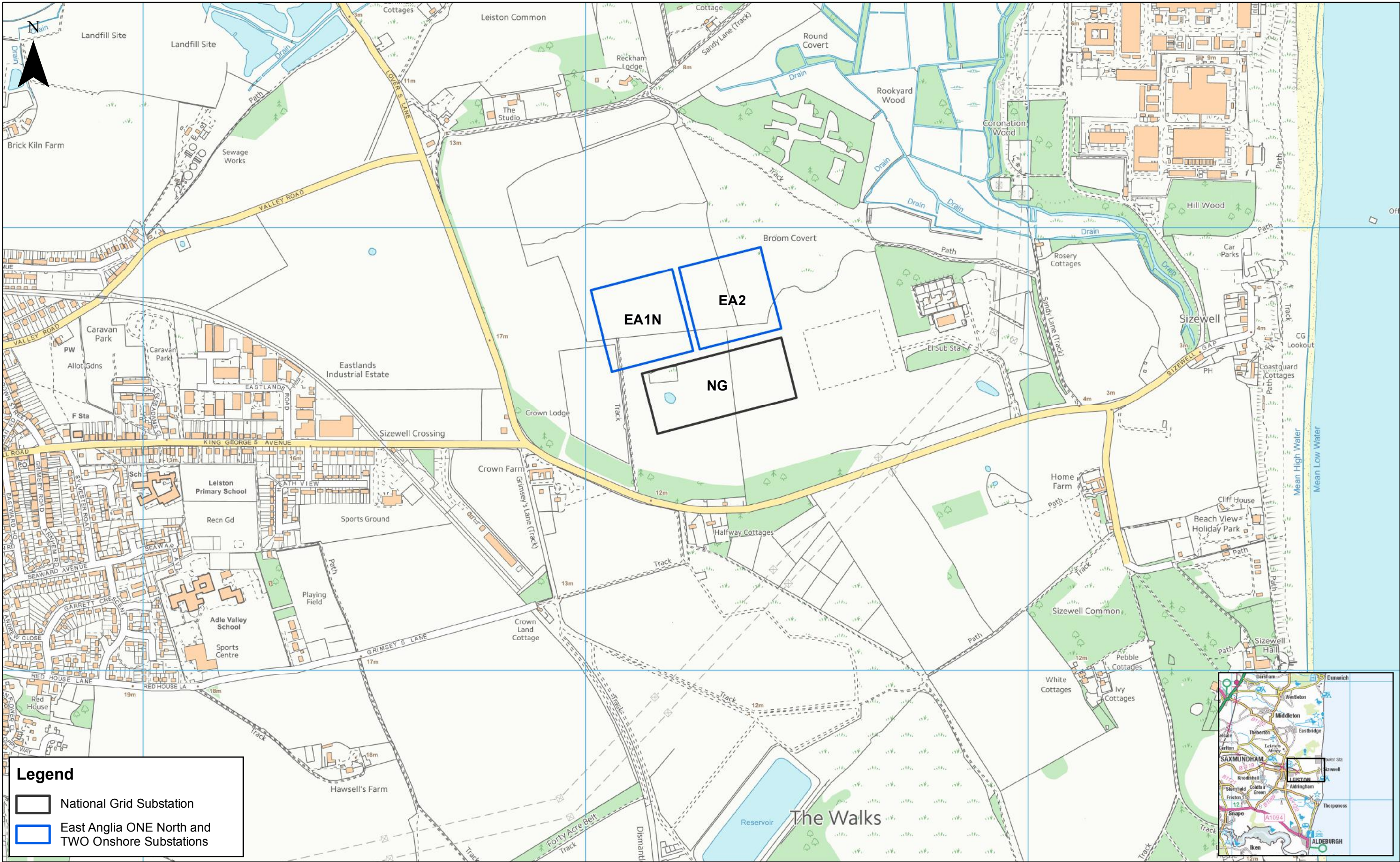


Legend

National Grid Substation

East Anglia ONE North and TWO Onshore Substations

<div><div><div></div><div>SCOTTISHPOWER RENEWABLES</div></div></div>				1:7,000 Scale @ A3		<div><div></div><div>0200400</div><div>Metres</div></div>		<div><div>East Anglia ONE North</div><div>Preferred Substation Arrangement within Substation Zone 7 (including NG substation)</div></div>		<div><div><div>Drg No</div><div>Rev</div><div>Date</div><div>Figure</div></div><div><div>EA1N-DEV-DRG-IBR-000441</div><div>1</div><div>27/11/18</div><div>4.14</div></div><div><div>Coordinate System:</div><div>BNG</div><div>Datum:</div><div>OSGB36</div></div></div>	
<div><div>1</div><div>27/11/2018</div><div>FC</div><div>First Issue.</div></div>				<div><div>Prepared:</div><div>FC</div></div>		<div><div>Checked:</div><div>PW</div></div>		<div><div>Approved:</div><div>AH</div></div>		<div><div>Source:</div><div>© Crown copyright and database rights 2018. Ordnance Survey 0100031673.</div></div>	
<div><div>Rev</div><div>Date</div><div>By</div><div>Comment</div></div>				<div><div></div><div></div></div>		<div><div></div><div></div></div>		<div><div></div><div></div></div>		<div><div></div><div></div></div>	


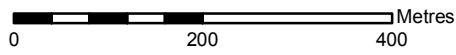


Legend

National Grid Substation

East Anglia ONE North and TWO Onshore Substations



				1:8,000 Scale @ A3				East Anglia ONE North East Anglia ONE North and TWO Onshore Substation Arrangement within Broom Covert, Sizewell (including NG substation)			Drg No EA1N-DEV-DRG-IBR-000442	
Prepared: FC				Checked: PW		Approved: AH		Rev 1			Date 27/11/18	
1 27/11/2018 FC First Issue.				27/11/2018 FC First Issue.		27/11/2018 FC First Issue.		Date 27/11/18			Figure 4.15	
Rev Date By Comment				Rev Date By Comment		Rev Date By Comment		Coordinate System: BNG Datum: OSGB36				

This page is intentionally blank