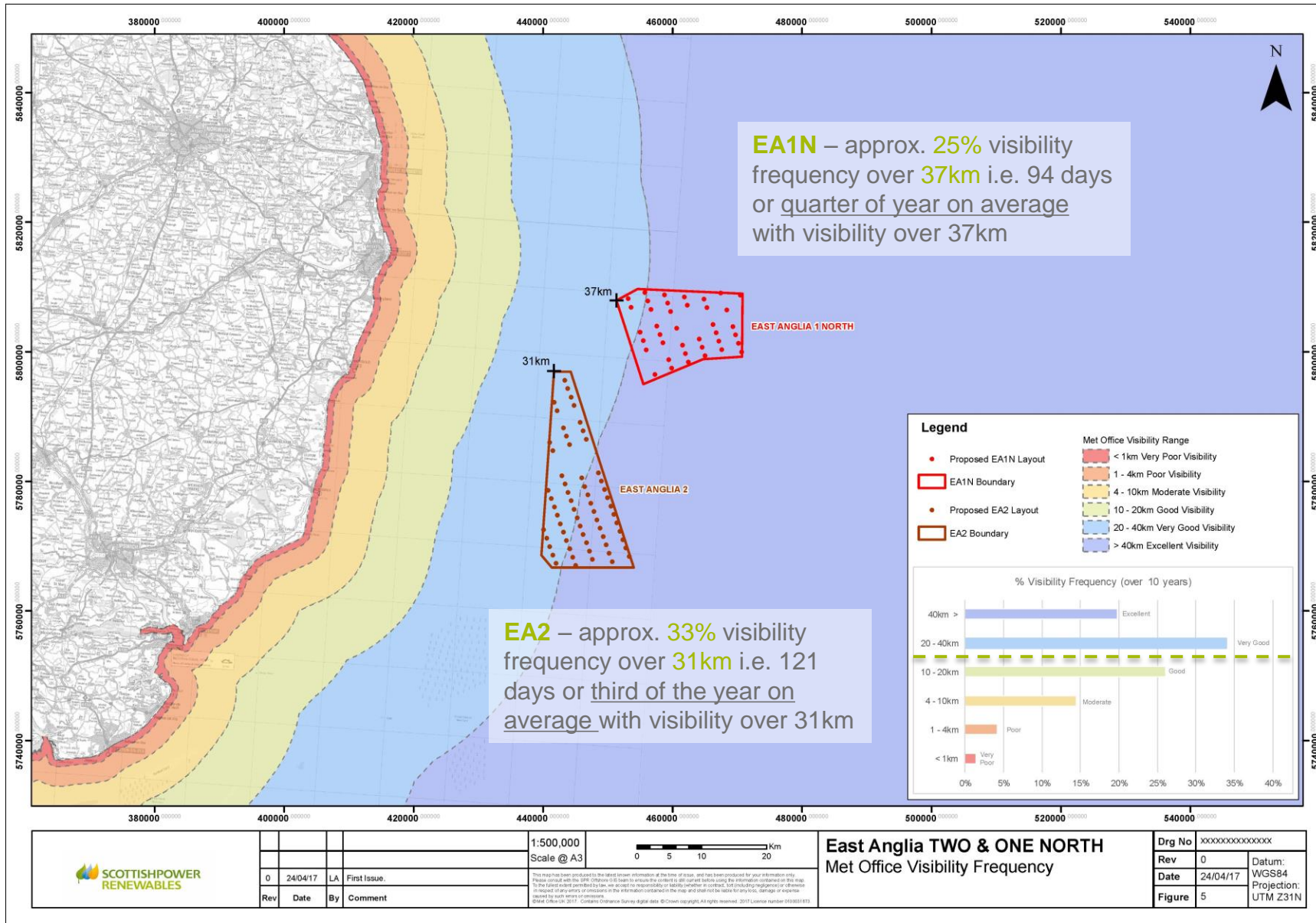


Coastal Views & Visibility



East Anglia One North Offshore Windfarm & East Anglia Two Offshore Windfarm

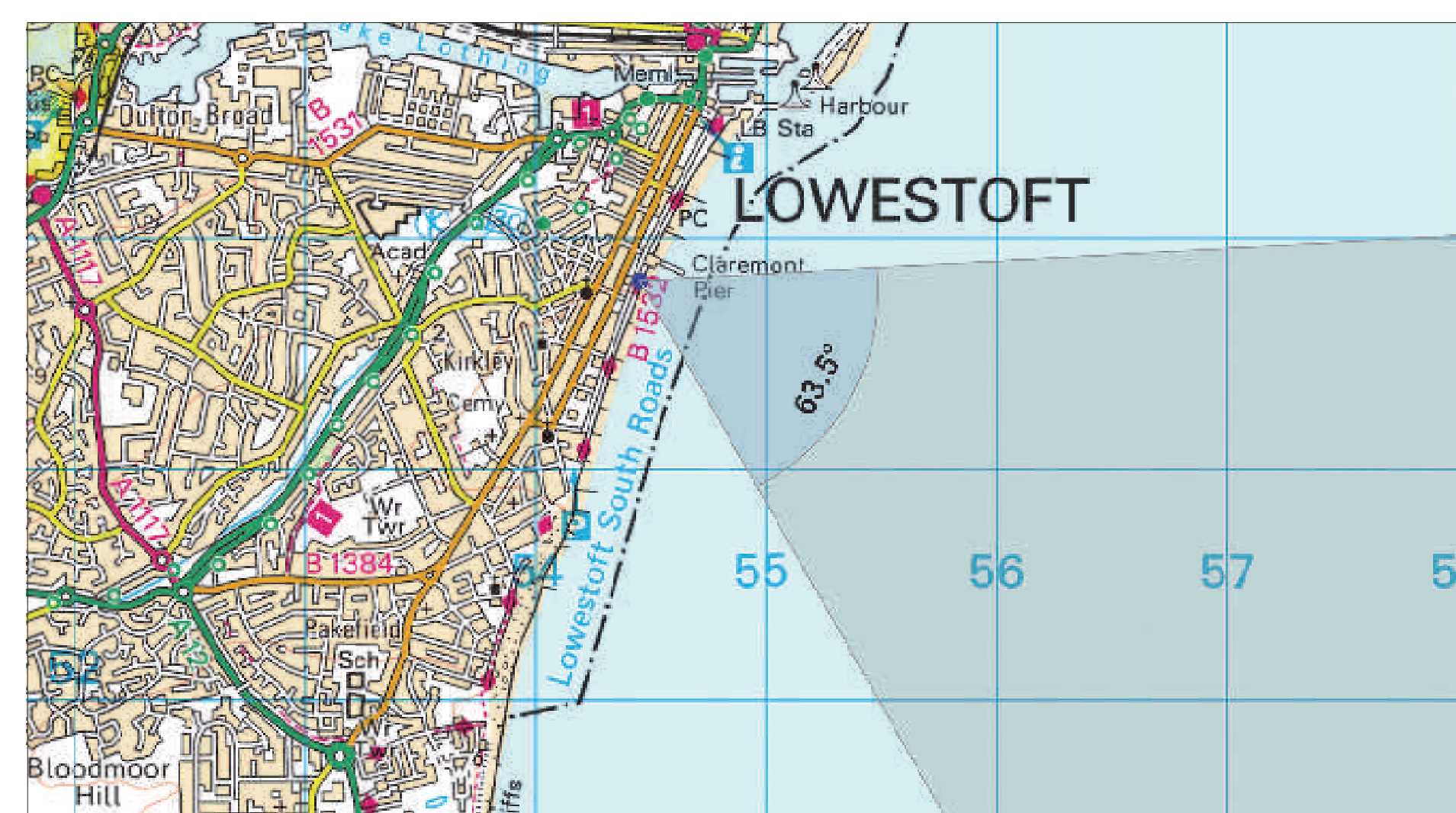


Photomontage view from Lowestoft showing EA1N and EA2 15/19MW turbine layouts.



Existing view from Lowestoft.

Lowestoft



| | |
|------------------------------------|---|
| OS reference: | 654451 E 291813 N |
| Eye level: | 7.3 m AOD |
| Direction of view: | 118° |
| Nearest turbine: | EA1N 38.8 / EA2 32.2 km |
| Horizontal field of view: | 63.5° (planar projection) |
| Principal distance | 812.5 mm |
| Viewing distance | View flat at a comfortable arm's length |
| Paper size: | 1046.7 x 841 mm |
| Correct printed image size: | 1006.7 x 260 mm |
| Camera: | Canon EOS 5D Mark II |
| Lens: | 50mm (Canon EF 50mm f/1.4) |
| Camera height: | 1.5 m AGL |
| Date and time: | 12/09/17, 12:33 |

OS 1:25,000 Scale © Crown Copyright. All rights reserved 2017 Licence number 010001073

East Anglia One North Offshore Windfarm & East Anglia Two Offshore Windfarm

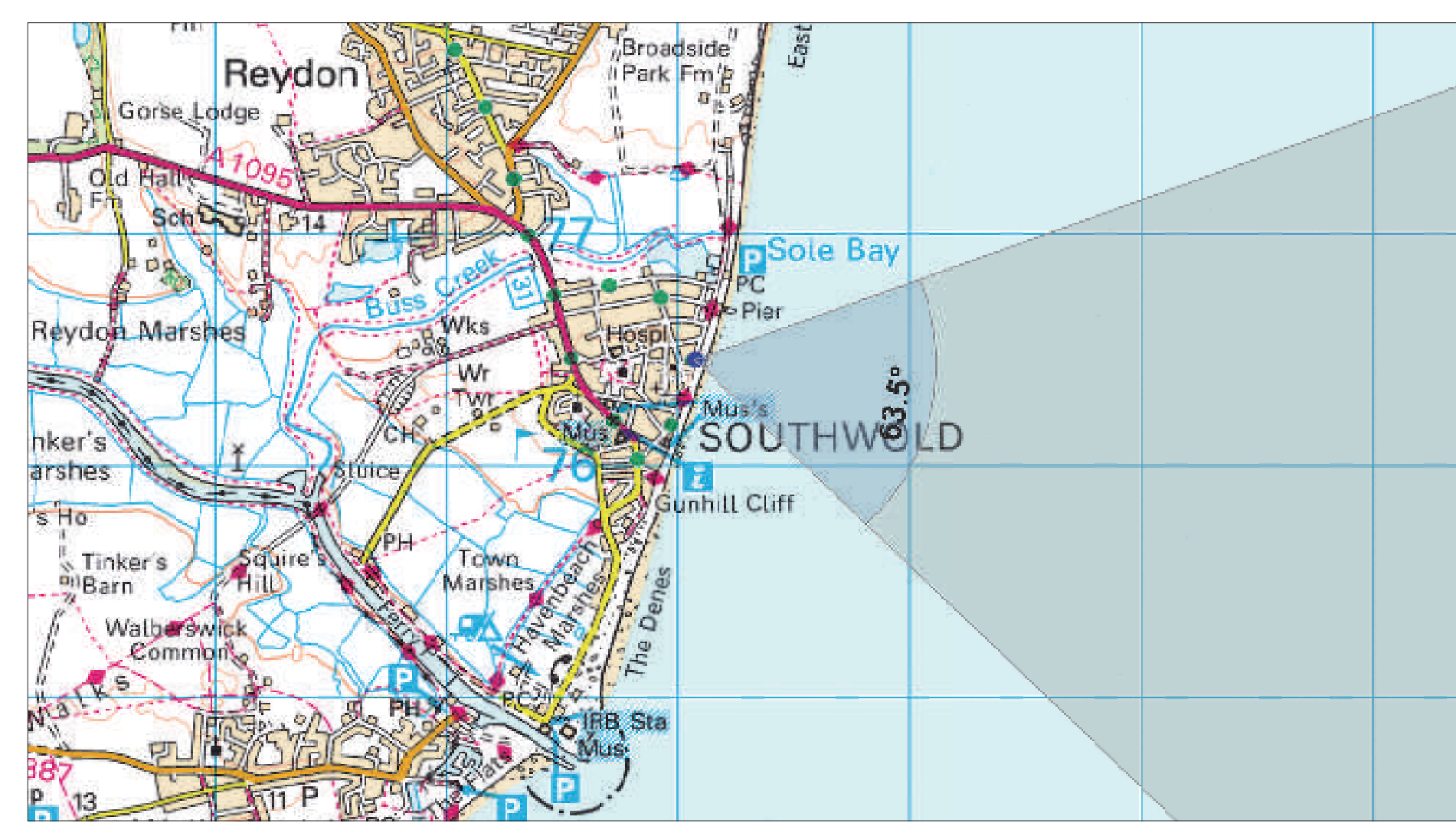


Photomontage view from Southwold showing EA1N and EA2 15/19MW turbine layouts.



Existing view from Southwold.

Southwold



| | |
|------------------------------------|---|
| OS reference: | 651072 E 276454 N |
| Eye level: | 11.07 m AOD |
| Direction of view: | 102° |
| Nearest turbine: | EA1N 44.0 / EA2 31.5 km |
| Horizontal field of view: | 63.5° (planar projection) |
| Principal distance: | 812.5 mm |
| Viewing distance: | View flat at a comfortable arm's length |
| Paper size: | 1046.7 x 841 mm |
| Correct printed image size: | 1006.7 x 260 mm |
| Camera: | Canon EOS 5D Mark II |
| Lens: | 50mm (Canon EF 50mm f/1.4) |
| Camera height: | 1.5 m AGL |
| Date and time: | 12/09/17, 11:04 |

East Anglia One North Offshore Windfarm & East Anglia Two Offshore Windfarm

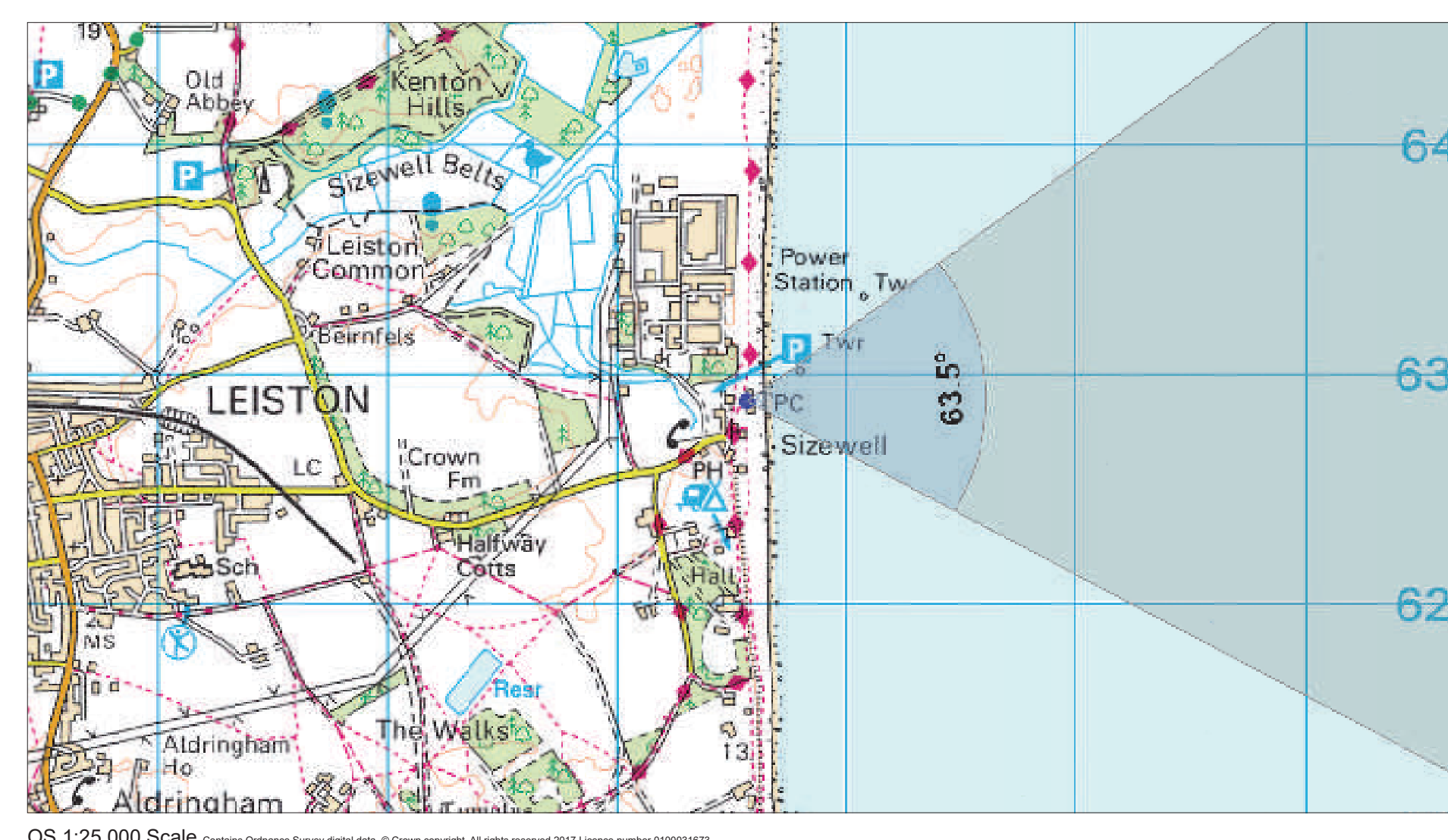


Photomontage view from Sizewell Beach showing EA1N and EA2 15/19MW turbine layouts.



Existing view from Sizewell Beach.

Sizewell Beach



| | |
|------------------------------------|---|
| OS reference: | 647542 E 262858 N |
| Eye level: | 7.24 m AOD |
| Direction of view: | 86° |
| Nearest turbine: | EA1N 52.4 / EA2 35.7 km |
| Horizontal field of view: | 63.5° (planar projection) |
| Principal distance: | 812.5 mm |
| Viewing distance: | View flat at a comfortable arm's length |
| Paper size: | 1046.7 x 841 mm |
| Correct printed image size: | 1006.7 x 260 mm |
| Camera: | Canon EOS 6D |
| Lens: | 50mm (Canon EF 50mm f/1.4) |
| Camera height: | 1.5 m AGL |
| Date and time: | 12/09/17, 11:04 |

East Anglia One North Offshore Windfarm & East Anglia Two Offshore Windfarm

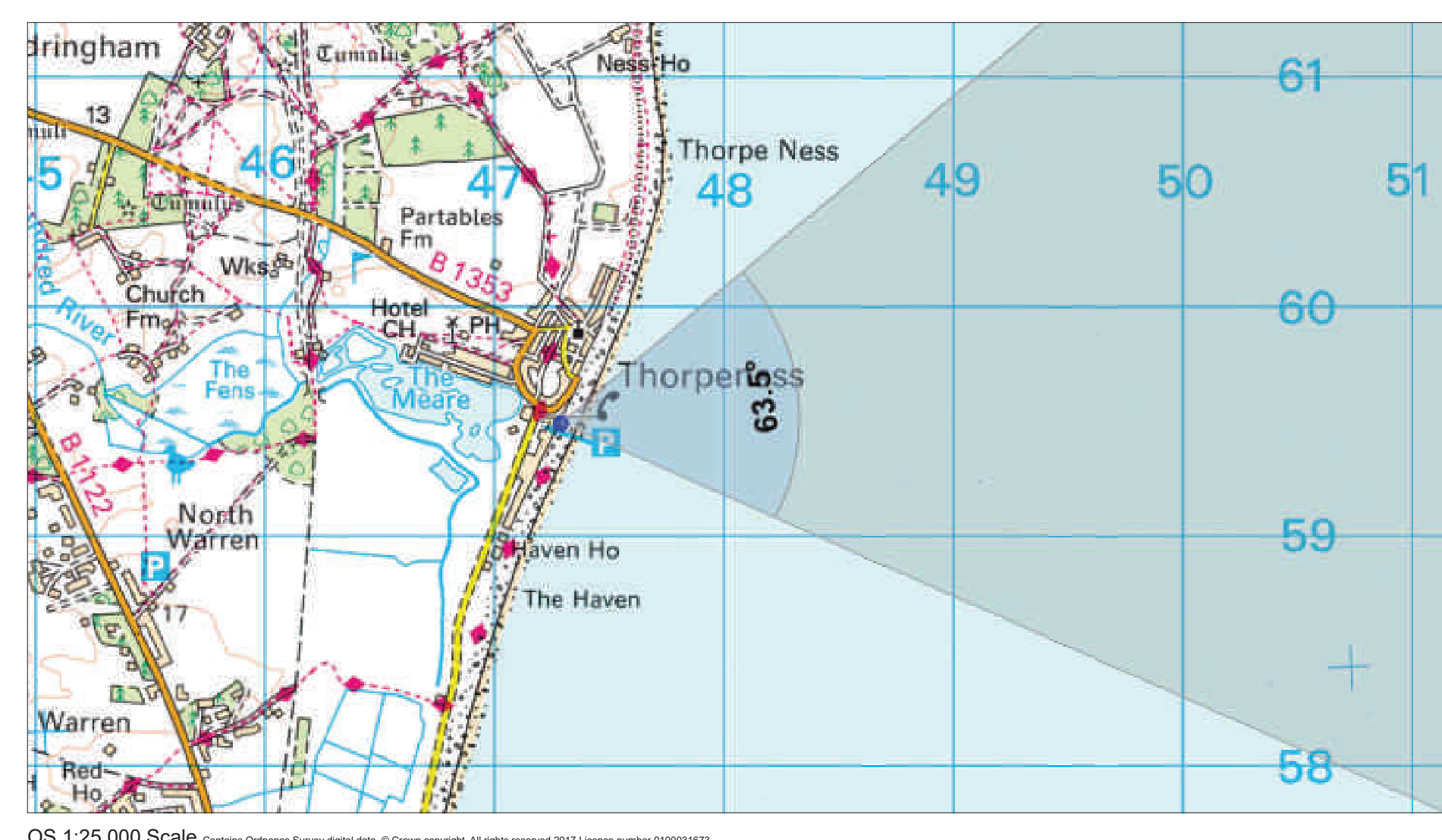


Photomontage view from Thorpeness showing EA1N and EA2 15/19MW turbine layouts.



Existing view from Thorpeness.

Thorpeness



| | |
|------------------------------------|---|
| OS reference: | 647287 E 259490 N |
| Eye level: | 4.68 m AOD |
| Direction of view: | 82° |
| Nearest turbine: | EA1N 53.9 / EA2 35.9 km |
| Horizontal field of view: | 63.5° (planar projection) |
| Principal distance: | 812.5 mm |
| Viewing distance: | View flat at a comfortable arm's length |
| Paper size: | 1046.7 x 841 mm |
| Correct printed image size: | 1006.7 x 260 mm |
| Camera: | Canon EOS 5D Mark II |
| Lens: | 50mm (Canon EF 50mm f/1.4) |
| Camera height: | 1.5 m AGL |
| Date and time: | 11/09/17, 13:28 |

East Anglia One North Offshore Windfarm & East Anglia Two Offshore Windfarm

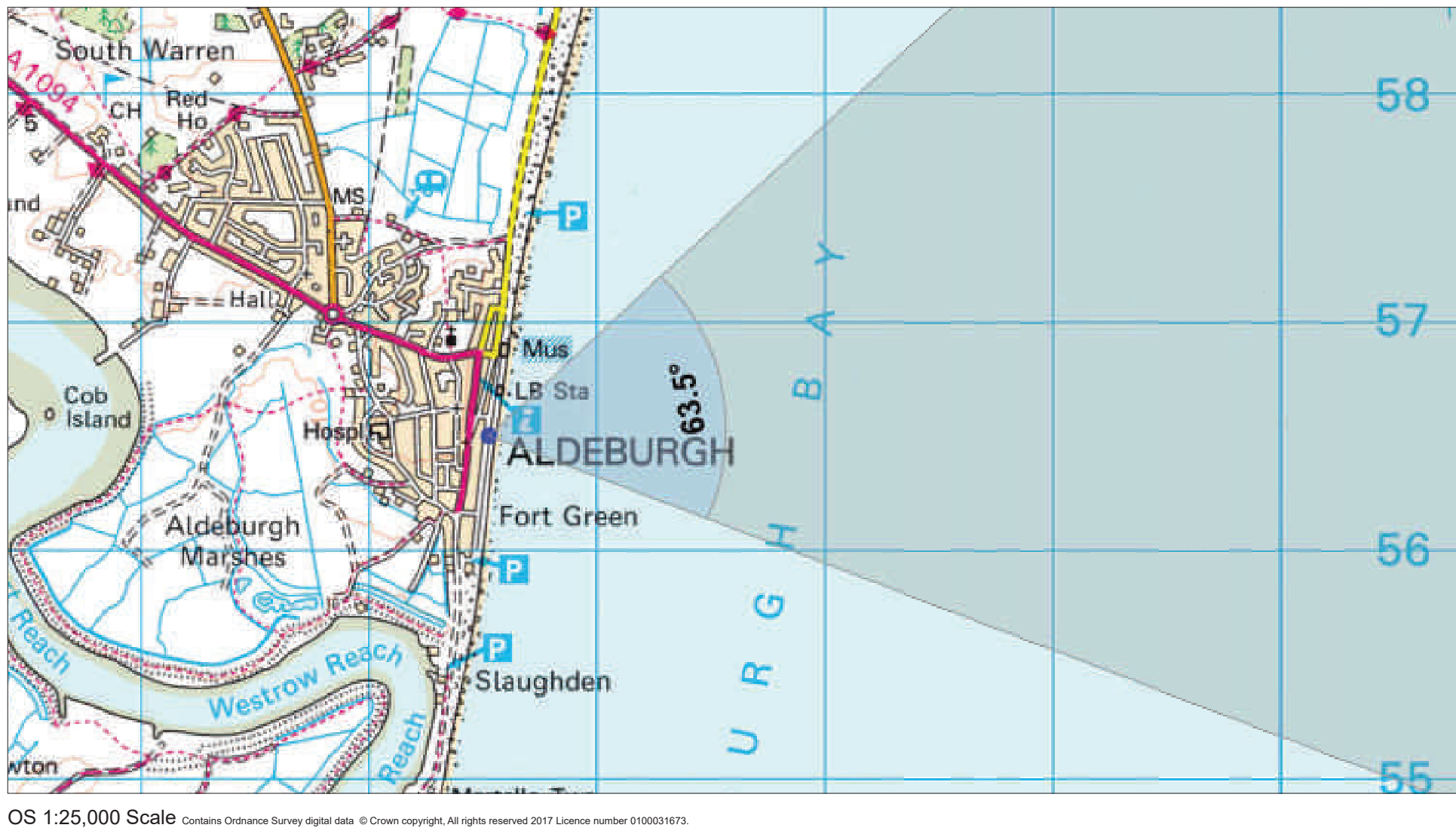


Photomontage view from Aldeburgh showing EA1N and EA2 15/19MW turbine layouts.



Existing view from Aldeburgh.

Aldeburgh



| | |
|------------------------------------|---|
| OS reference: | 646525 E 256500 N |
| Eye level: | 5.96 m AOD |
| Direction of view: | 79° |
| Nearest turbine: | EA1N 55.8 / EA2 36.4 km |
| Horizontal field of view: | 63.5° (planar projection) |
| Principal distance: | 812.5 mm |
| Viewing distance: | View flat at a comfortable arm's length |
| Paper size: | 1046.7 x 841 mm |
| Correct printed image size: | 1006.7 x 260 mm |
| Camera: | Canon EOS 5D Mark II |
| Lens: | 50mm (Canon EF 50mm f/1.4) |
| Camera height: | 1.5 m AGL |
| Date and time: | 09/09/17, 13:24 |

East Anglia One North Offshore Windfarm & East Anglia Two Offshore Windfarm

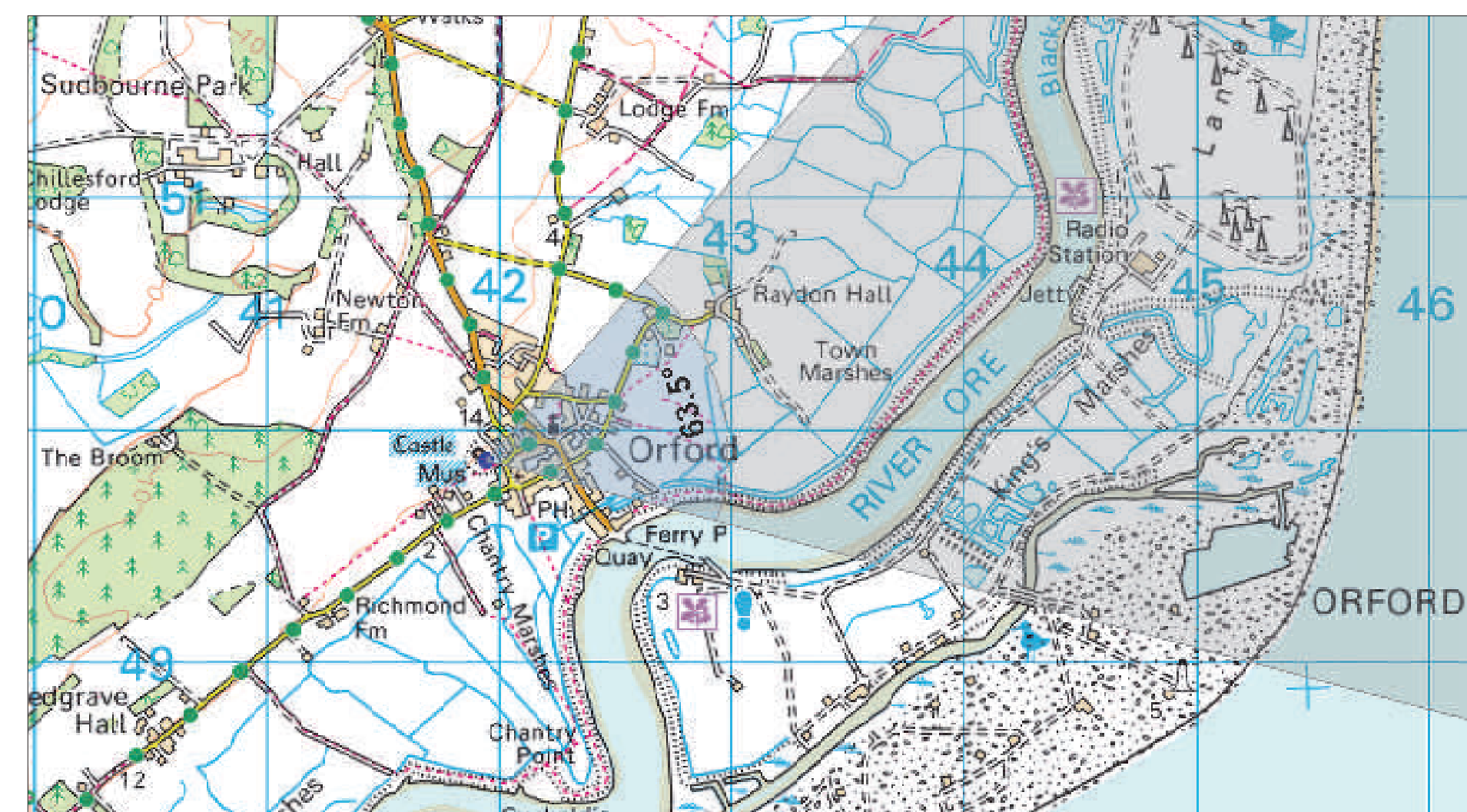


Photomontage view from Orford Castle showing EA1N and EA2 15/19MW turbine layouts.



Existing view from Orford Castle.

Orford Castle



| | |
|------------------------------------|---|
| OS reference: | 641944 E 249868 N |
| Eye level: | 40.66 m AOD |
| Direction of view: | 73° |
| Nearest turbine: | EA1N 62.8 / EA2 40.7 km |
| Horizontal field of view: | 63.5° (planar projection) |
| Principal distance: | 812.5 mm |
| Viewing distance: | View flat at a comfortable arm's length |
| Paper size: | 1046.7 x 841 mm |
| Correct printed image size: | 1006.7 x 260 mm |
| Camera: | Canon EOS 6D |
| Lens: | 50mm (Canon EF 50mm f/1.4) |
| Camera height: | 1.5 m AGL |
| Date and time: | 09/09/17, 12:44 |