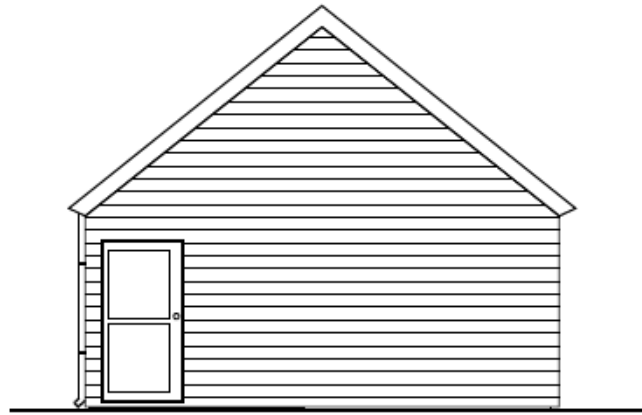
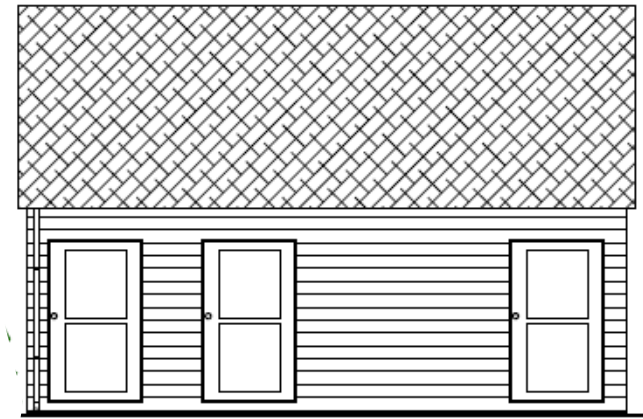


Typical Substation Elevation

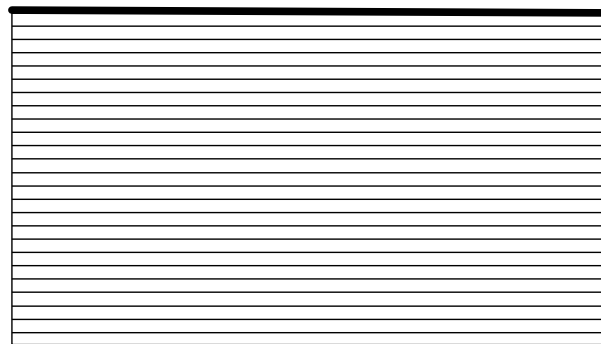


End Elevation

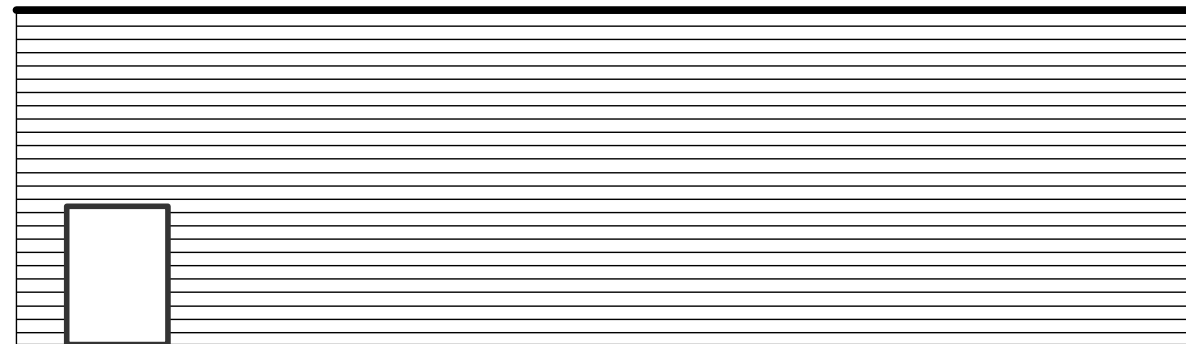


Side Elevation

Typical Energy Storage Facility Elevation



End Elevation



Side Elevation

Note:

This drawing is indicative only. Detailed design and final dimensions of any buildings and electrical infrastructure within the substation and energy storage compound will be provided prior to commencement of any works, once the final grid connection solution has been agreed with the Network Operator.

Local building materials and finishes will be used where possible. Any water disposal to be in accordance with relevant agency requirements and in accordance with building regulations.

Do not scale this drawing.



Douglas West Wind Farm Extension
Environmental Impact Assessment Report

Figure 3.8

Typical Substation & Energy Storage Facility