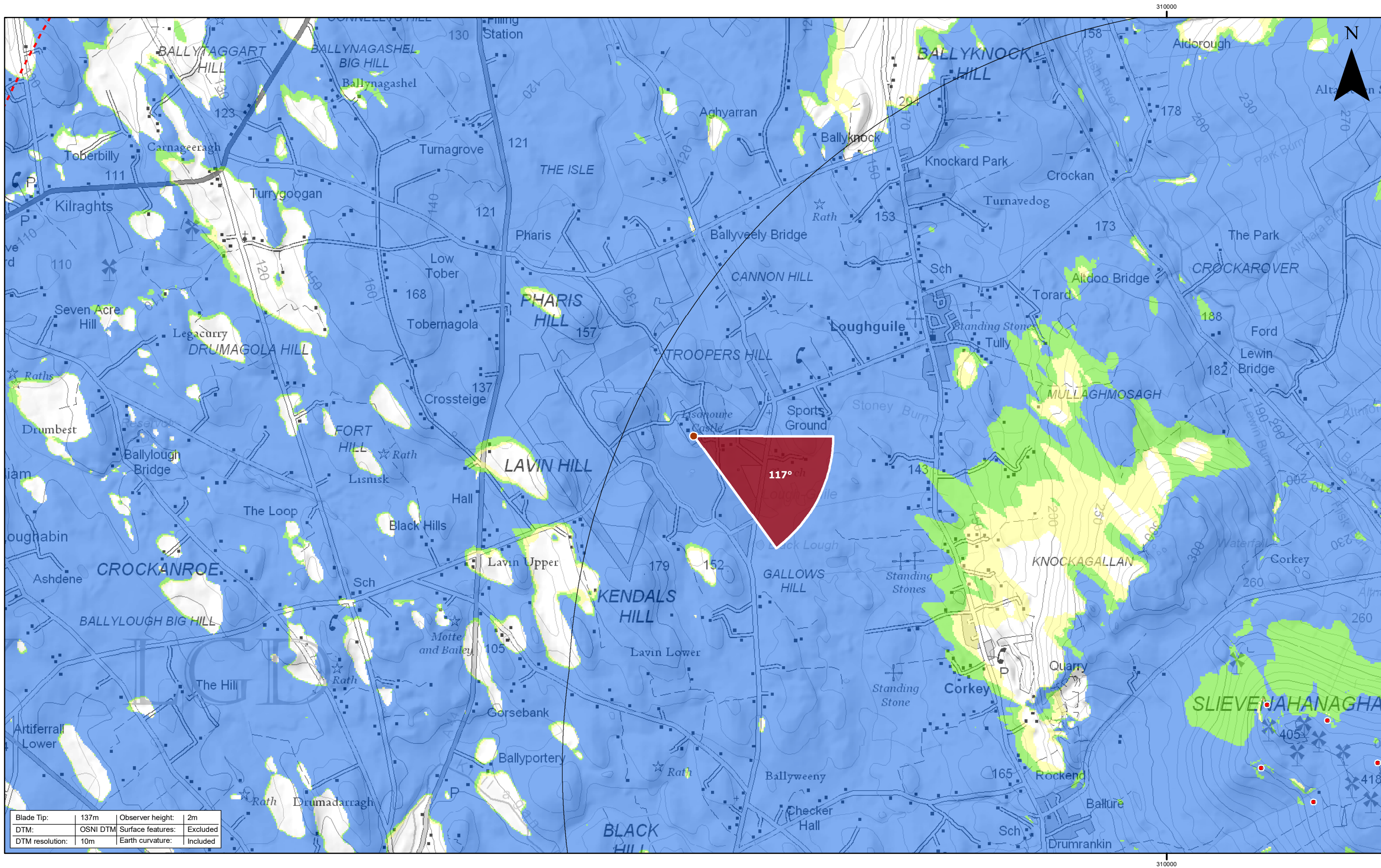



**Note:**


1. **ZTV:** Created using ESRI ArcGIS 10.6 software using the following data and parameters:  
Blade tip height: 137m  
DTM Data: OSNI 10m DTM  
Observer height: 2m  
No surface features, such as buildings or trees, were included in the analysis.  
Earth curvature and light refraction have been included in calculations.

2. **Cumulative Windfarms:** Single turbines in close proximity of Corkey have not been labelled. Full 30km Study Area is not being shown on this figure. For full extent of 30km Study area and assessed cumulative windfarms see Figure 6.10.





Rev	Date	By	Comment
0	30/01/20	JM	First Issue



This is Crown Copyright and is reproduced with the permission of Land & Property Services under delegated authority the Controller of Her Majesty's Stationery Office, © Crown Copyright and database right 2017 Licence Number 100,220-163505

### Corkey Windfarm Repowering

Figure 1

Lissanoure Castle

**Drawing Number:**  
2606-REP-104

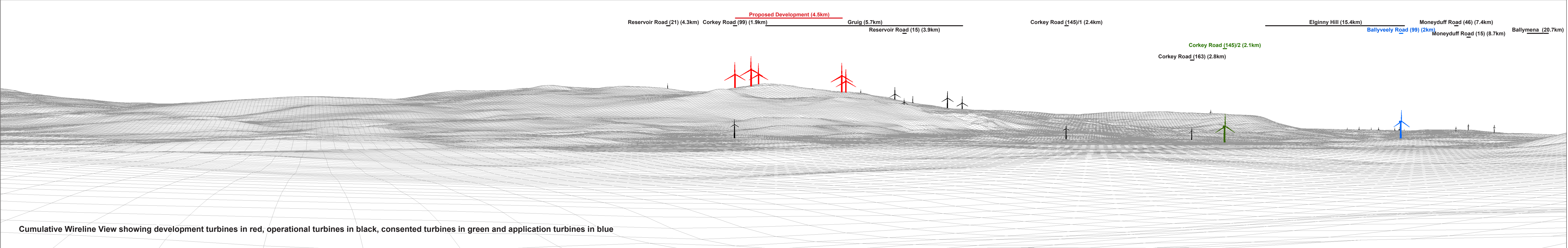
**Scale @ A3**  
1:25,000

**Datum**  
TM65

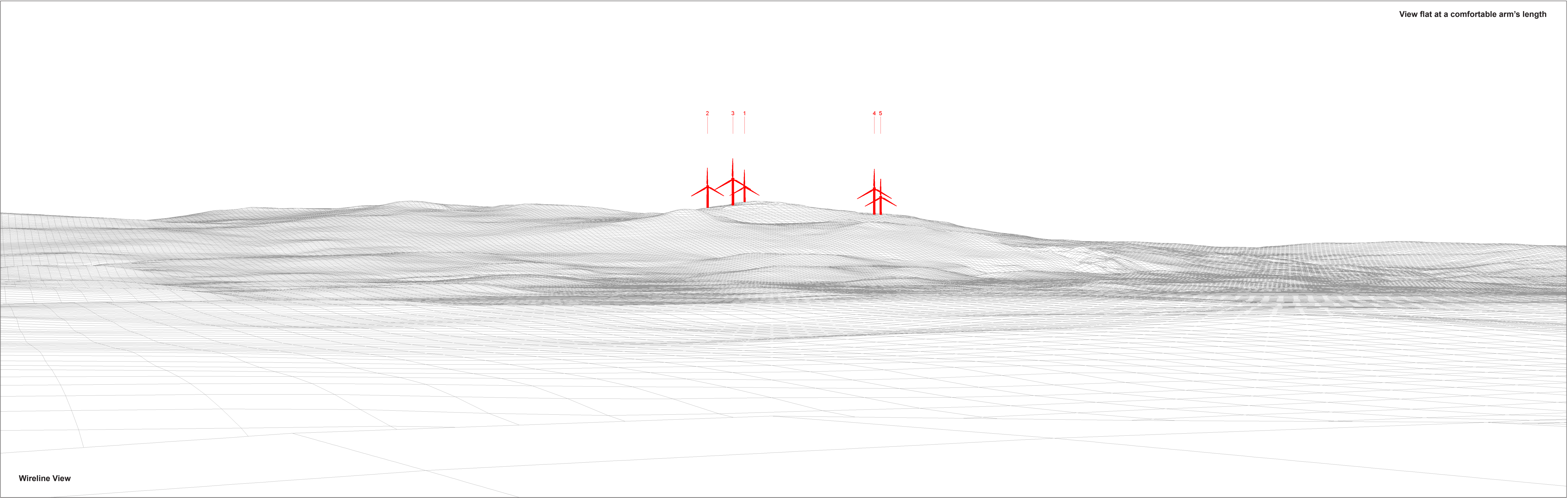
**Projection**  
TM

**Drawing produced by**  
Optimised Environments Ltd.









View flat at a comfortable arm's length

Wireline View

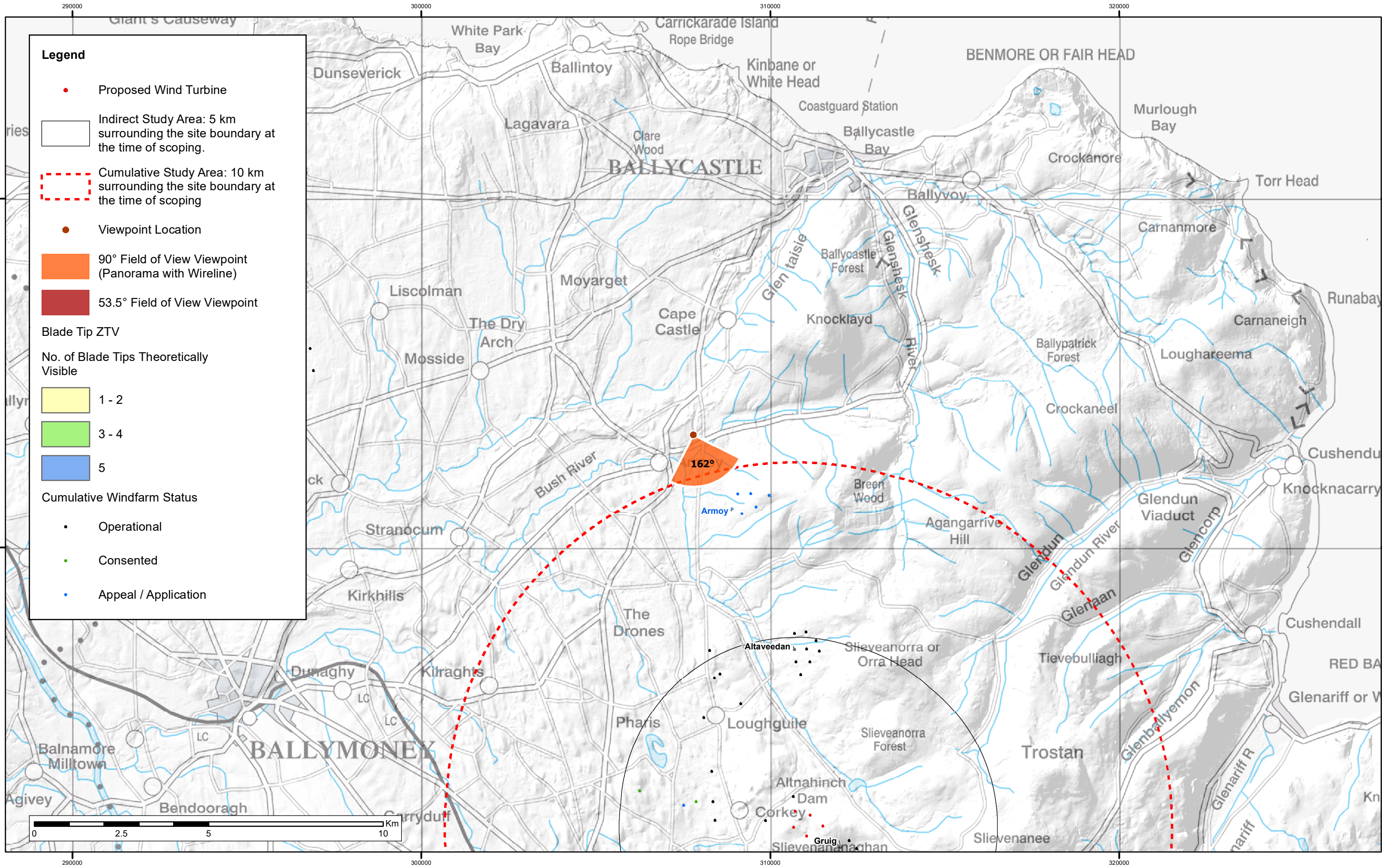
OS reference	306610 E 424365 N	Horizontal field of view	53.5° (planar projection)	Camera	Canon EOS 6D
Elevation	133.4 m AOD	Principal distance	812.5 mm	Lens	Canon EF 50mm f/1.4
Direction of view	117°	Paper size	841 x 297 mm (half A1)	Camera height	1.5m AGL
Nearest turbine	4.53 km	Correct printed image size	820 x 260 mm	Date & time taken	27/01/2020 10:40

Figure 1b  
Lissanoure Castle Wireline





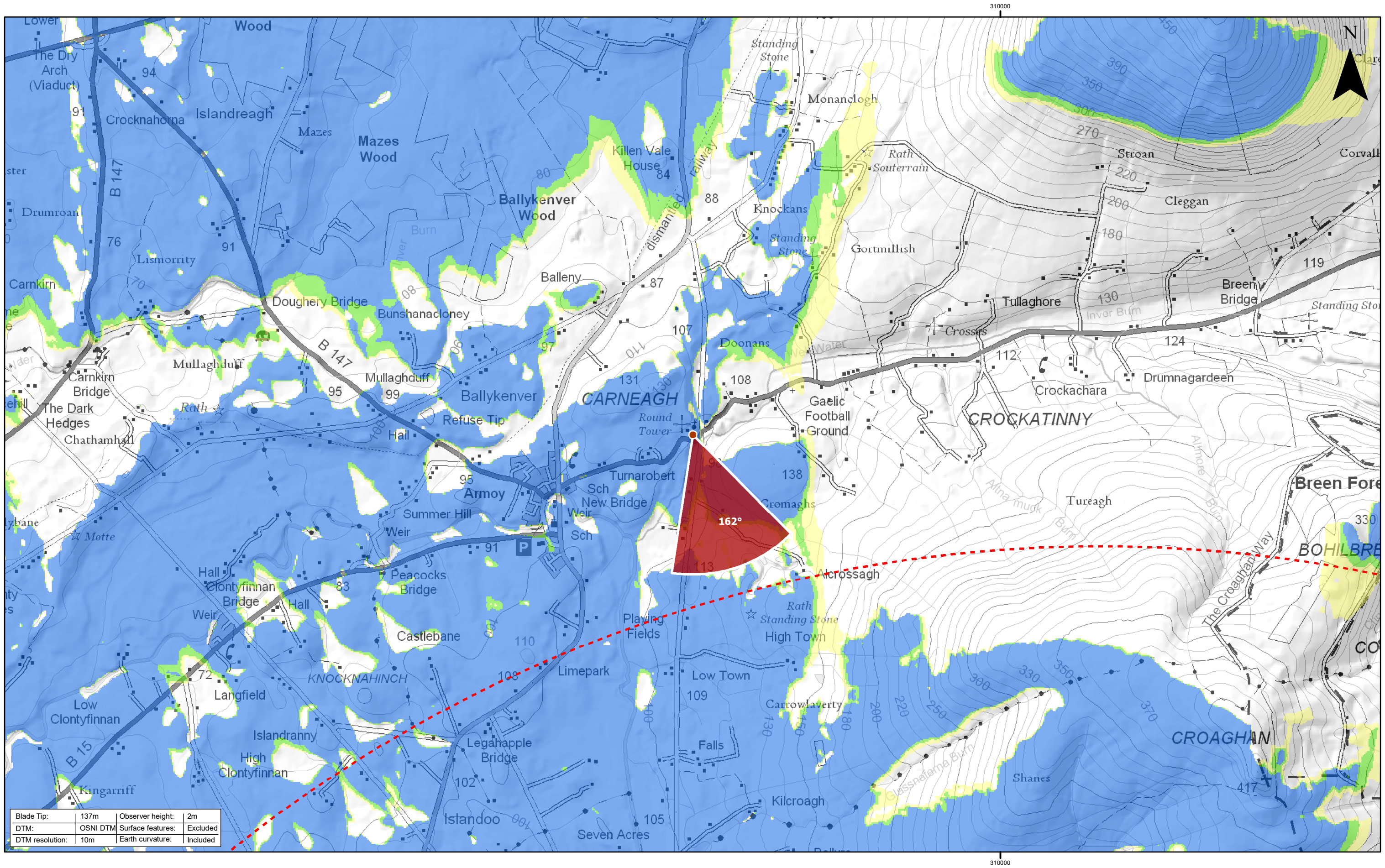




**Note:**

1. **ZTV:** Created using ESRI ArcGIS 10.6 software using the following data and parameters:  
Blade tip height: 137m  
DTM Data: OSNI 10m DTM  
Observer height: 2m  
No surface features, such as buildings or trees, were included in the analysis.  
Earth curvature and light refraction have been included in calculations.

2. **Cumulative Windfarms:** Single turbines in close proximity of Corkey have not been labelled. Full 30km Study Area is not being shown on this figure.  
For full extent of 30km Study area and assessed cumulative windfarms see Figure 6.10.



Rev	Date	By	Comment
0	30/01/20	JM	First Issue

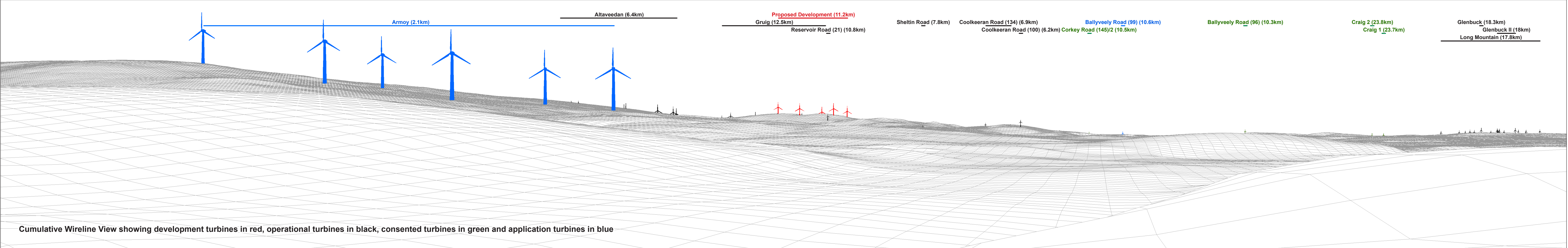
0	30/01/20	JM	First Issue
---	----------	----	-------------

0	30/01/20	JM	First Issue
---	----------	----	-------------

**Corkey Windfarm Repowering**  
Figure 2  
St. Patrick's, Armo

Drawing Number: 2606-REP-105	Datum TM65	Projection TM
Scale @ A3 1:25,000	Drawing produced by Optimised Environments Ltd.	

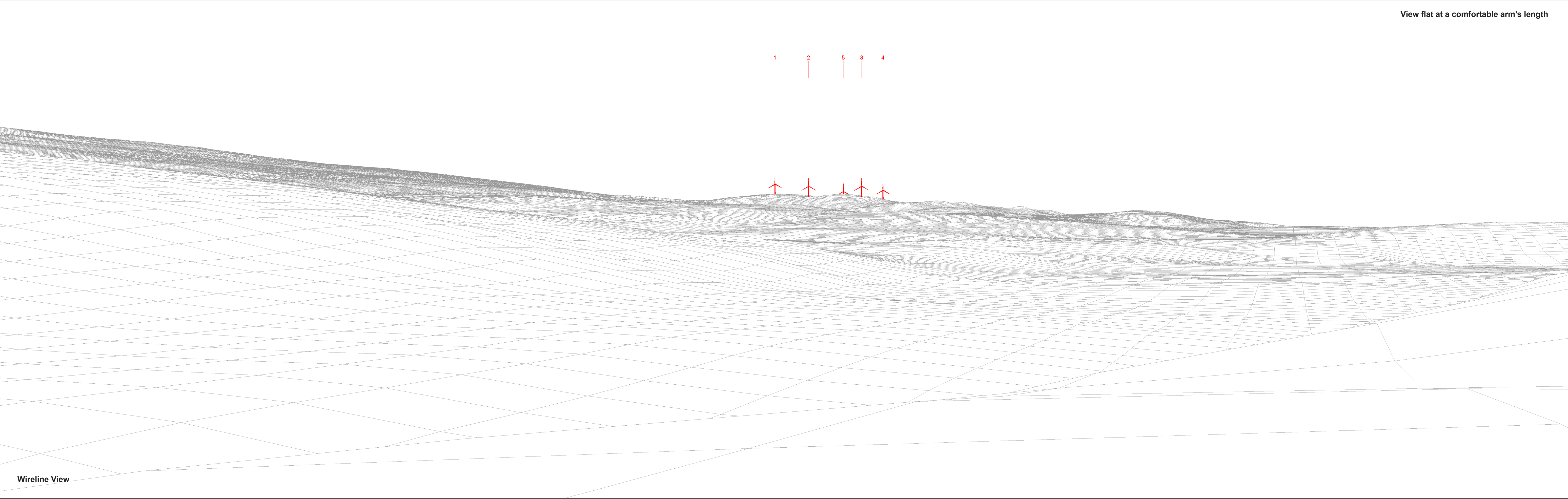




OS reference	307793 E 433240 N	Horizontal field of view	90° (cylindrical projection)	Camera	Canon EOS 6D
Elevation	108.7 m AOD	Principal distance	522 mm	Lens	Canon EF 50mm f/1.4
Direction of view	162°	Paper size	841 x 297 mm (half A1)	Camera height	1.5m AGL
Nearest turbine	11.19 km	Correct printed image size	820 x 130 mm	Date & time taken	27/01/2020 09:35

Figure 2a  
St. Patrick's, Armoy Panorama with Cumulative Wireline









Photomontage

Figure 2c  
St. Patrick's, Armoy Photomontage