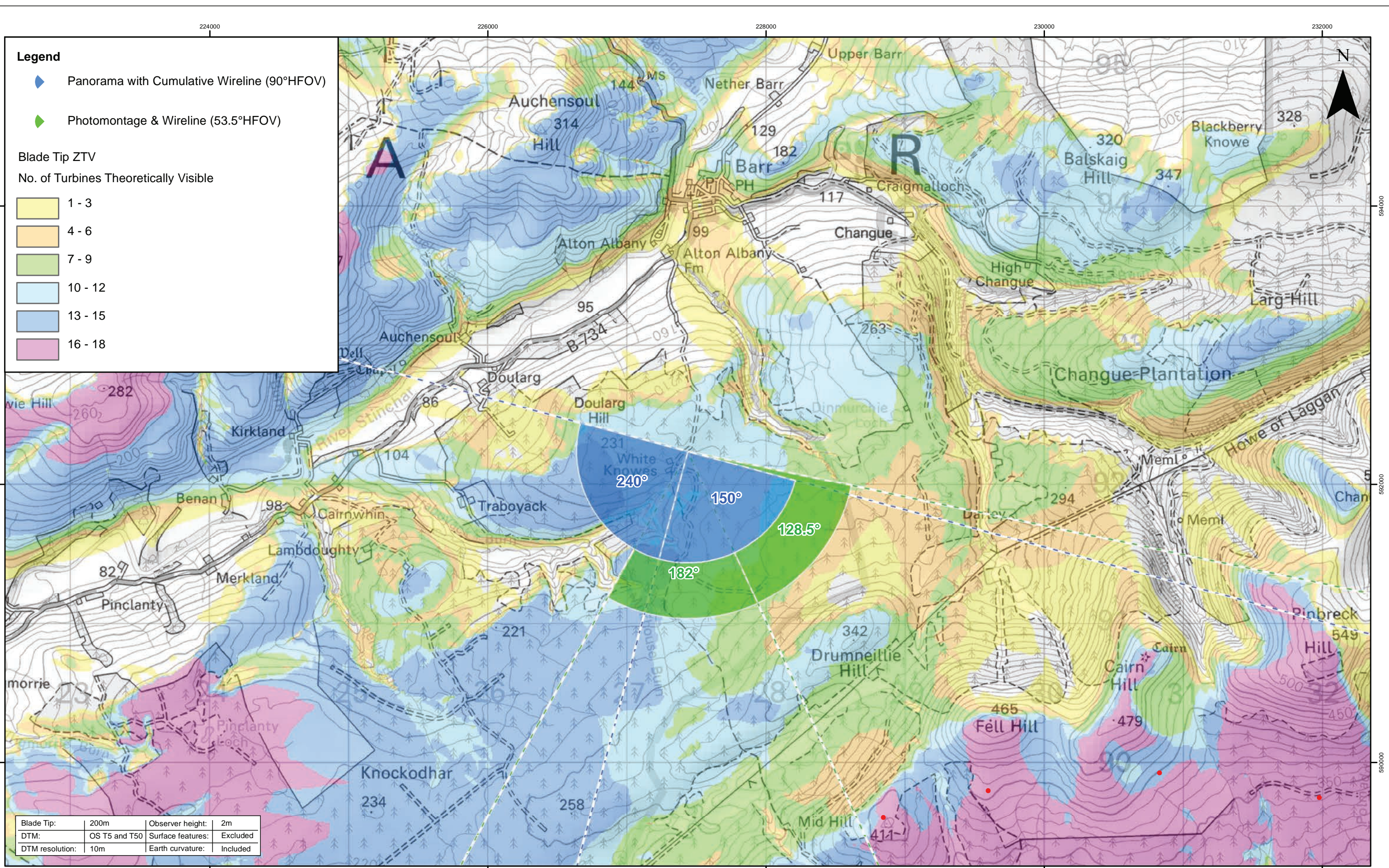


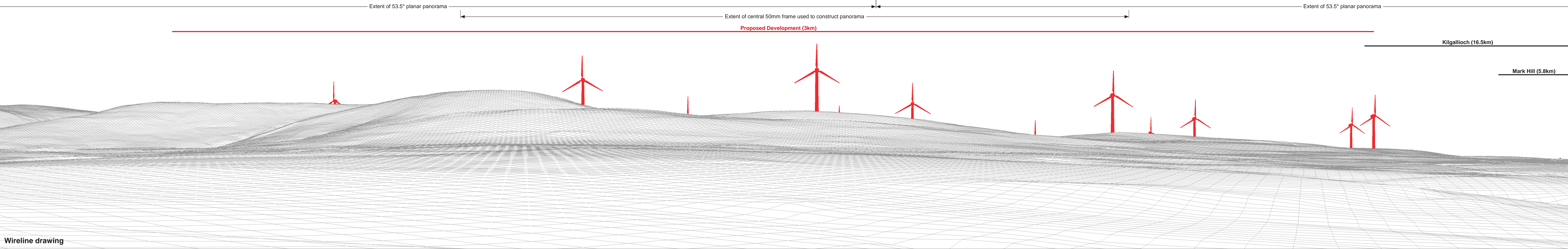
Note:
1. Cumulative Windfarms: Full 60 km Search Area is not being shown on this figure. For full extent of 60 km Search Area and including Scoping sites see Figure 6.23.





Baseline photograph

This image provides landscape and visual context only



Wireline drawing

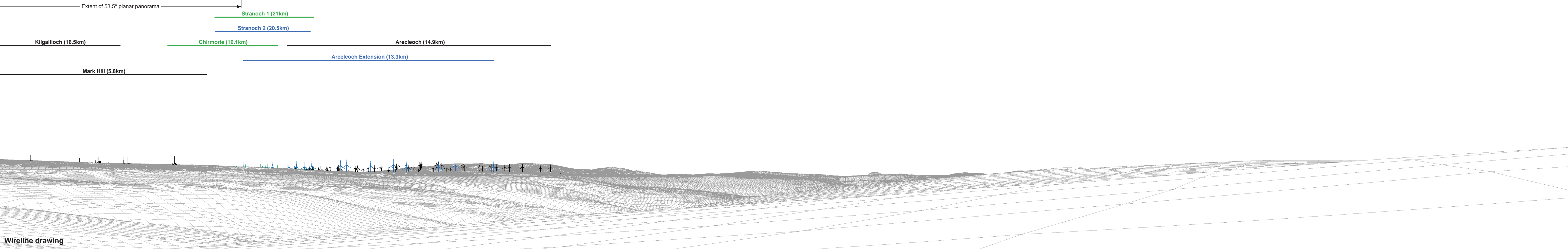
OS reference:	227437 E 592235 N	Horizontal field of view:	90° (cylindrical projection)	Camera:	Canon EOS 6D
Eye level:	225.95 m AOD	Principal distance	522 mm	Lens:	50mm (Canon EF 50mm f/1.4)
Direction of view:	150°			Camera height:	1.5 m AGL
Nearest turbine:	2.982 km			Date and time:	13/05/19, 14:47

Figure: 6.46b
Viewpoint 20: New Barr Trail (near White Knowes)



Baseline photograph

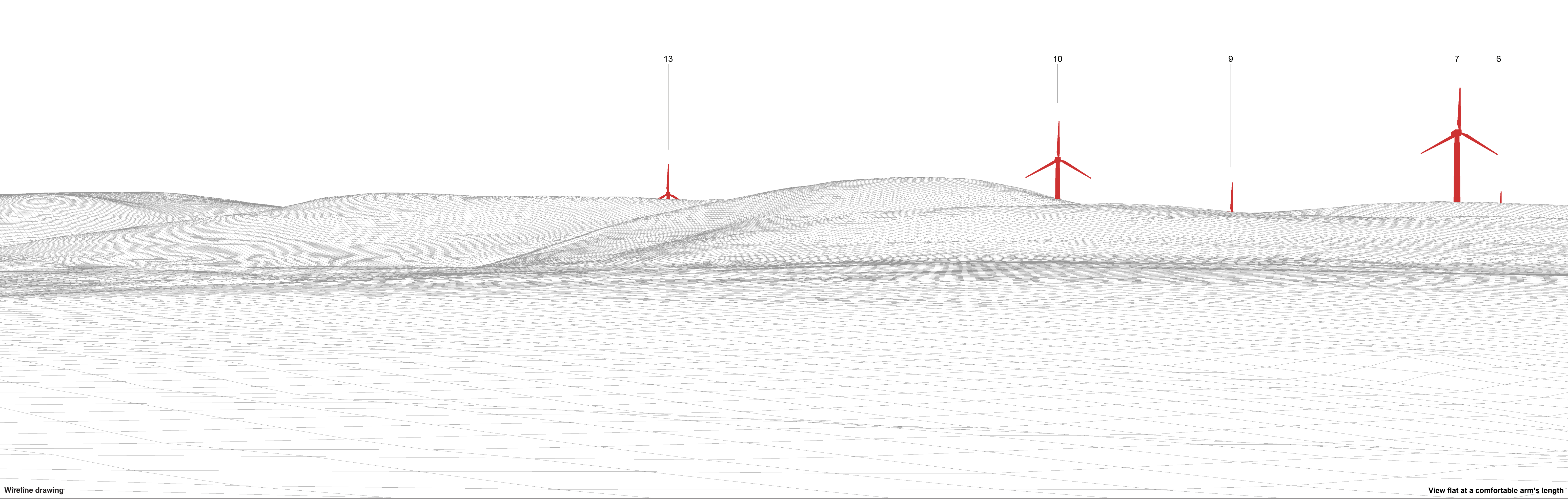
This image provides landscape and visual context only



Wireline drawing

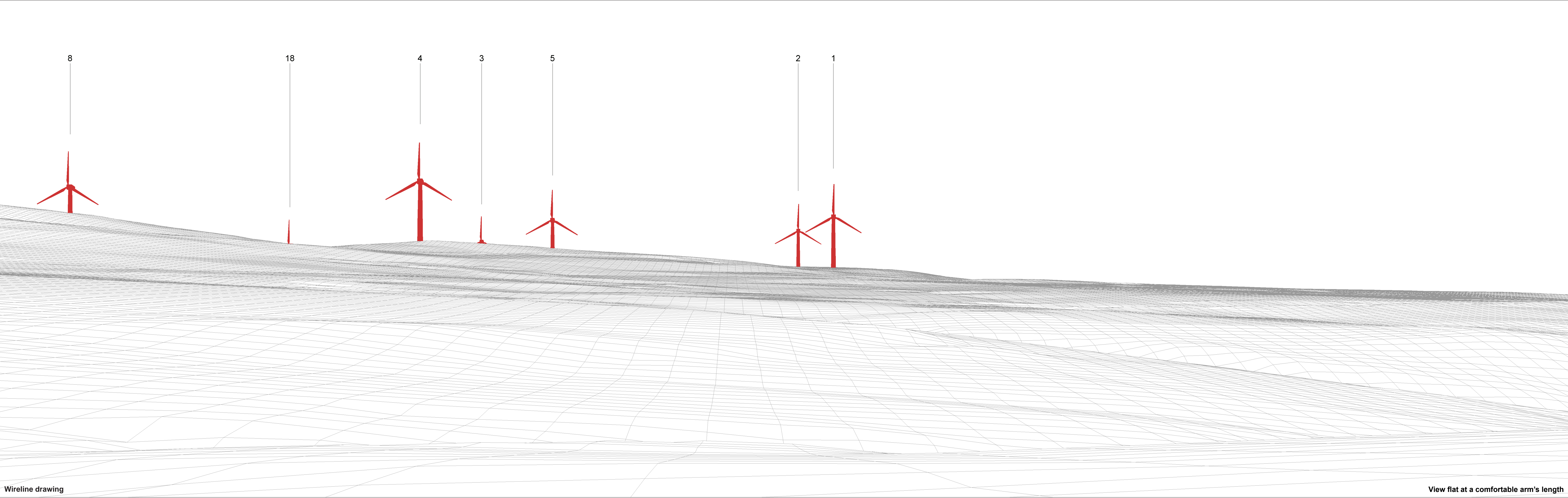
OS reference:	227437 E 592235 N	Horizontal field of view:	90° (cylindrical projection)	Camera:	Canon EOS 6D
Eye level:	225.95 m AOD	Principal distance	522 mm	Lens:	50mm (Canon EF 50mm f/1.4)
Direction of view:	240°			Camera height:	1.5 m AGL
Nearest turbine:	2.982 km			Date and time:	13/05/19, 14:47

Figure: 6.46c
Viewpoint 20: New Barr Trail (near White Knowes)



Wireline drawing

View flat at a comfortable arm's length



Wireline drawing

View flat at a comfortable arm's length

OS reference:	227437 E 592235 N	Horizontal field of view:	53.5° (planar projection)	Camera:	Canon EOS 6D
Eye level:	225.95 m AOD	Principal distance	812.5 mm	Lens:	50mm (Canon EF 50mm f/1.4)
Direction of view:	182°	Paper size:	841 x 297 mm (half A1)	Camera height:	1.5 m AGL
Nearest turbine:	2.982 km	Correct printed image size:	820 x 260 mm	Date and time:	13/05/19, 14:47

Figure: 6.46e
Viewpoint 20: New Barr Trail (near White Knowes)



OS reference:	227437 E 592235 N	Horizontal field of view:	53.5° (planar projection)	Camera:	Canon EOS 6D
Eye level:	225.95 m AOD	Principal distance	812.5 mm	Lens:	50mm (Canon EF 50mm f/1.4)
Direction of view:	128.5°	Paper size:	841 x 297 mm (half A1)	Camera height:	1.5 m AGL
Nearest turbine:	2.982 km	Correct printed image size:	820 x 260 mm	Date and time:	13/05/19, 14:47

Figure: 6.46f
Viewpoint 20: New Barr Trail (near White Knowes)



Photomontage

View flat at a comfortable arm's length

OS reference:	227437 E 592235 N	Horizontal field of view:	53.5° (planar projection)	Camera:	Canon EOS 6D	Figure: 6.46g
Eye level:	225.95 m AOD	Principal distance	812.5 mm	Lens:	50mm (Canon EF 50mm f/1.4)	Viewpoint 20: New Barr Trail (near White Knowes)
Direction of view:	182°	Paper size:	841 x 297 mm (half A1)	Camera height:	1.5 m AGL	
Nearest turbine:	2.982 km	Correct printed image size:	820 x 260 mm	Date and time:	13/05/19, 14:47	