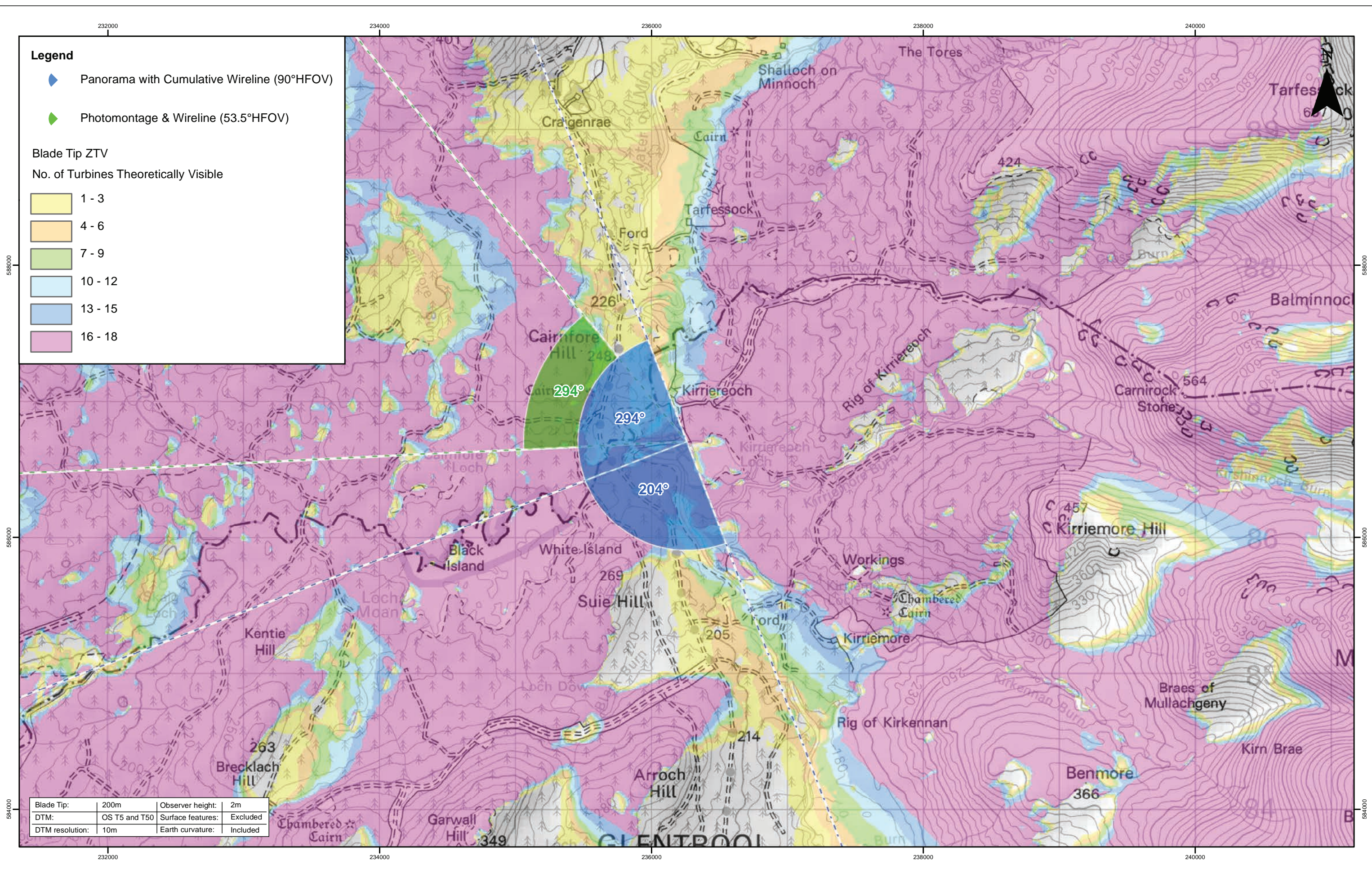


Note:
1. Cumulative Windfarms: Full 60 km Search Area is not being shown on this figure. For full extent of 60 km Search Area and including Scoping sites see Figure 6.23.



B	10/12/19	JM	Second Issue.
A	11/11/19	JM	First Issue.
Rev	Date	By	Comment

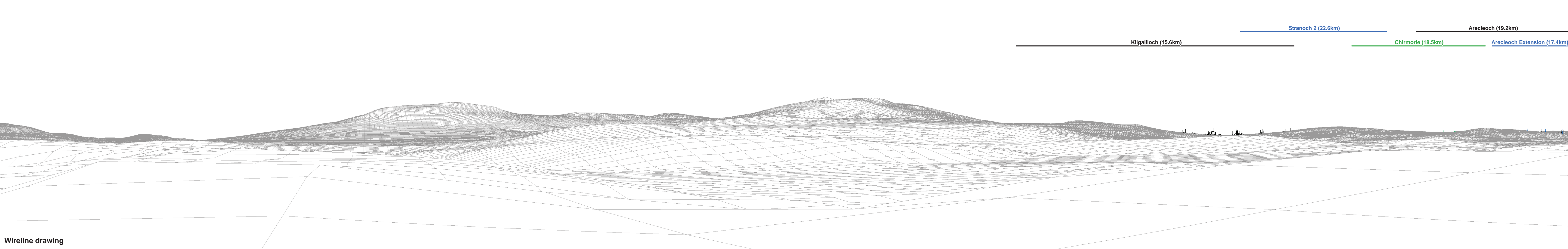
1:25,000
Scale @ A3

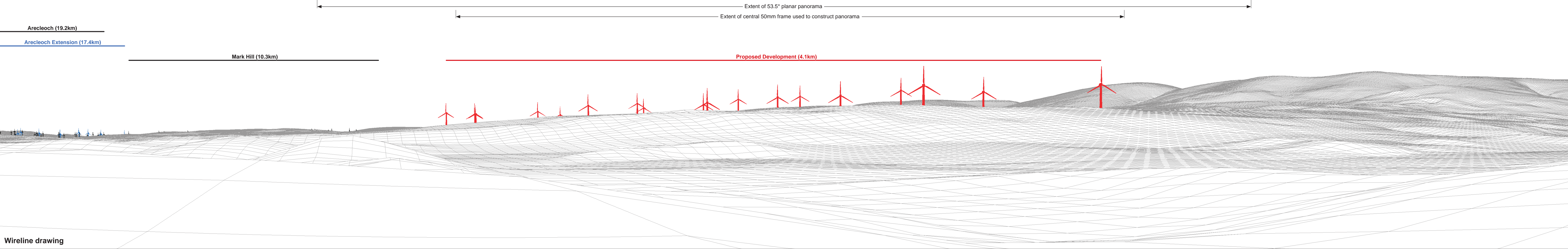
0 0.5 1 Km

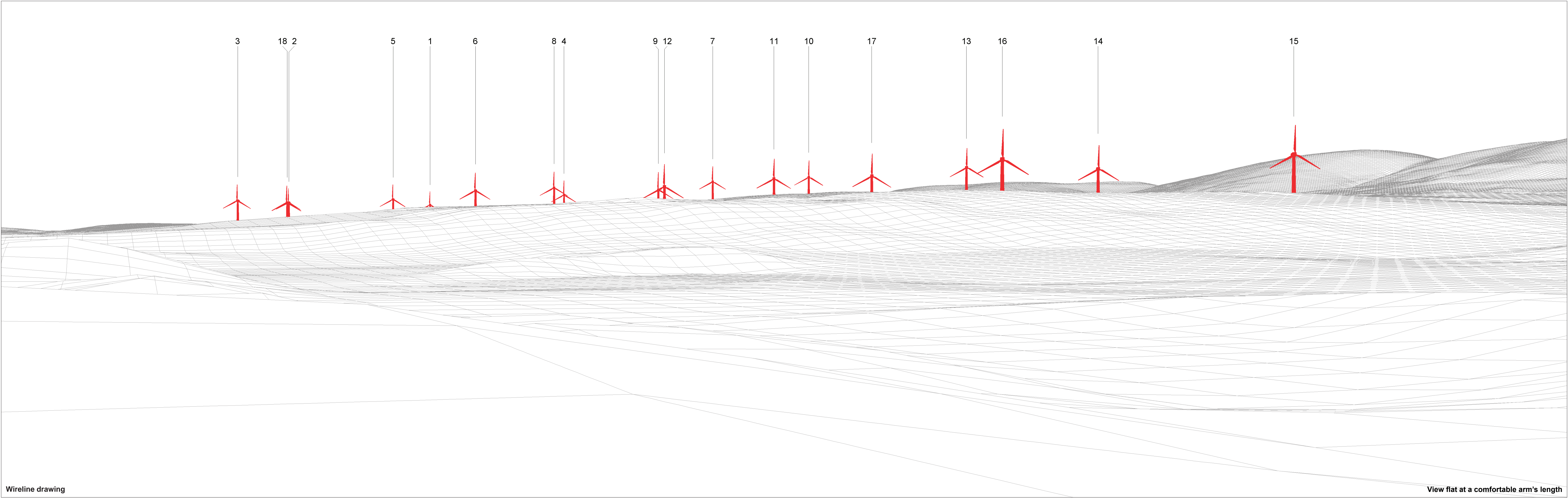
© Crown Copyright 2019. All rights reserved.
Ordnance Survey Licence 0100031673.
Contains OS data © Crown copyright and database right (2019)

Clauchrie Windfarm
EIA Report
Viewpoint 17: Kirriereoch Picnic Site

Drg No	EDI_1263_EIAR	
Rev	B	Datum: OSGB36
Date	10/12/19	Projection: TM
Figure	6.43a	







Wireline drawing

View flat at a comfortable arm's length

OS reference:	236258 E 586704 N	Horizontal field of view:	53.5° (planar projection)	Camera:	Canon EOS 6D
Eye level:	218.08 m AOD	Principal distance	812.5 mm	Lens:	50mm (Canon EF 50mm f/1.4)
Direction of view:	294°	Paper size:	841 x 297 mm (half A1)	Camera height:	1.5 m AGL
Nearest turbine:	4.058 km	Correct printed image size:	820 x 260 mm	Date and time:	13/05/19, 09:16

Figure: 6.43d
Viewpoint 17: Kirriereoch Picnic Site

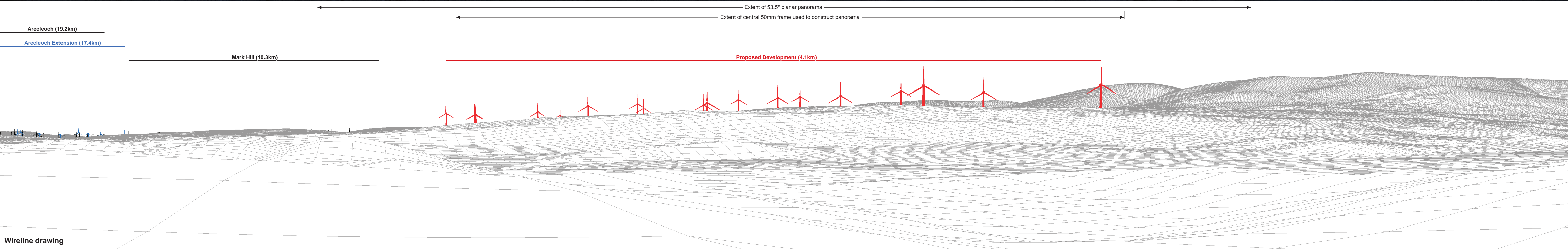


Photomontage

View flat at a comfortable arm's length

OS reference:	236258 E 586704 N	Horizontal field of view:	53.5° (planar projection)	Camera:	Canon EOS 6D
Eye level:	218.08 m AOD	Principal distance	812.5 mm	Lens:	50mm (Canon EF 50mm f/1.4)
Direction of view:	294°	Paper size:	841 x 297 mm (half A1)	Camera height:	1.5 m AGL
Nearest turbine:	4.058 km	Correct printed image size:	820 x 260 mm	Date and time:	13/05/19, 09:16

Figure: 6.43e
Viewpoint 17: Kirriereoch Picnic Site





Photomontage (2000 candela lights)

View flat at a comfortable arm's length

OS reference: 236258 E 586704 N
Eye level: 218.08 m AOD
Direction of view: 294°
Nearest turbine: 4.058 km

Horizontal field of view: 53.5° (planar projection)
Principal distance: 812.5 mm
Paper size: 841 x 297 mm (half A1)
Correct printed image size: 820 x 260 mm

Camera: Canon EOS 6D
Lens: 50mm (Canon EF 50mm f/1.4)
Camera height: 1.5 m AGL
Date and time: 13/05/19, 09:16 daytime photo converted to night time simulation.

Note: All proposed development turbines are lit.

Figure: 6.43g
Viewpoint 17: Kirriereoch Picnic Site



Photomontage (200 candela lights)

View flat at a comfortable arm's length

OS reference: 236258 E 586704 N
Eye level: 218.08 m AOD
Direction of view: 294°
Nearest turbine: 4.058 km

Horizontal field of view: 53.5° (planar projection)
Principal distance: 812.5 mm
Paper size: 841 x 297 mm (half A1)
Correct printed image size: 820 x 260 mm

Camera: Canon EOS 6D
Lens: 50mm (Canon EF 50mm f/1.4)
Camera height: 1.5 m AGL
Date and time: 13/05/19, 09:16 daytime photo converted to night time simulation.

Note: All proposed development turbines are lit.

Figure: 6.43h
Viewpoint 17: Kirriereoch Picnic Site