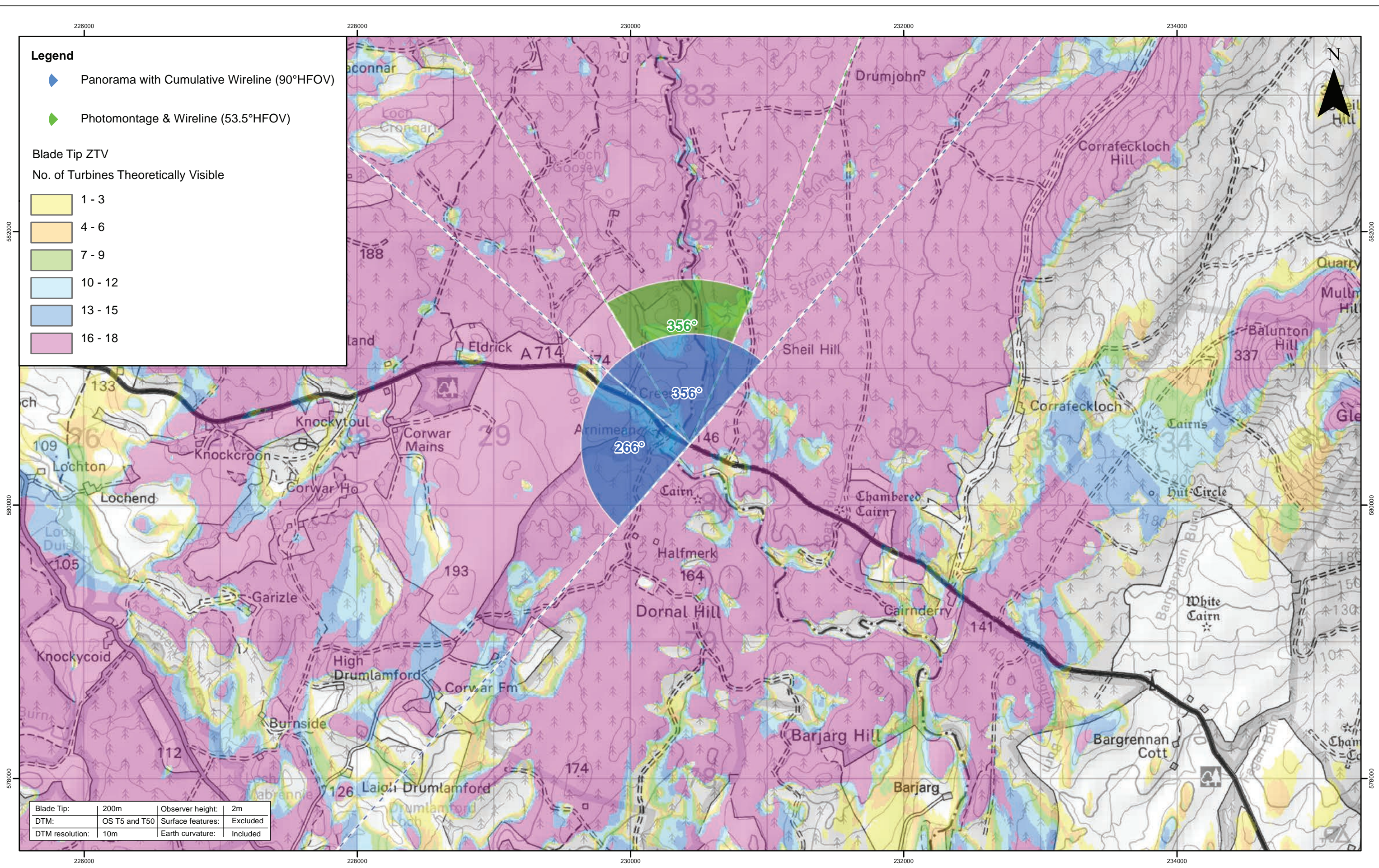
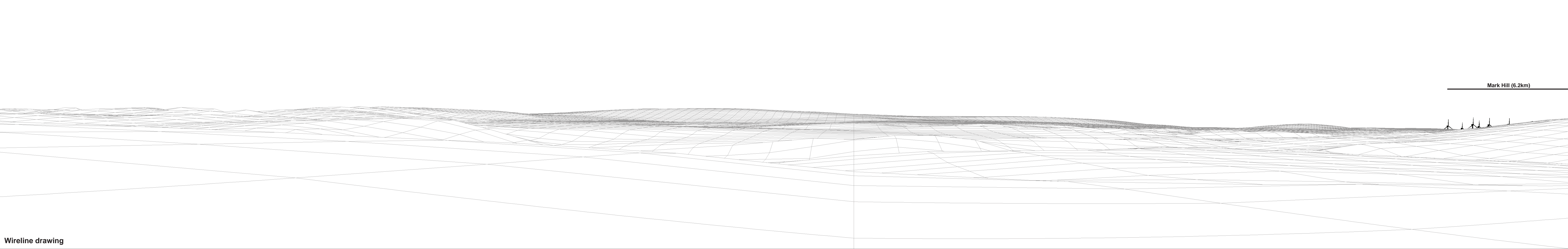


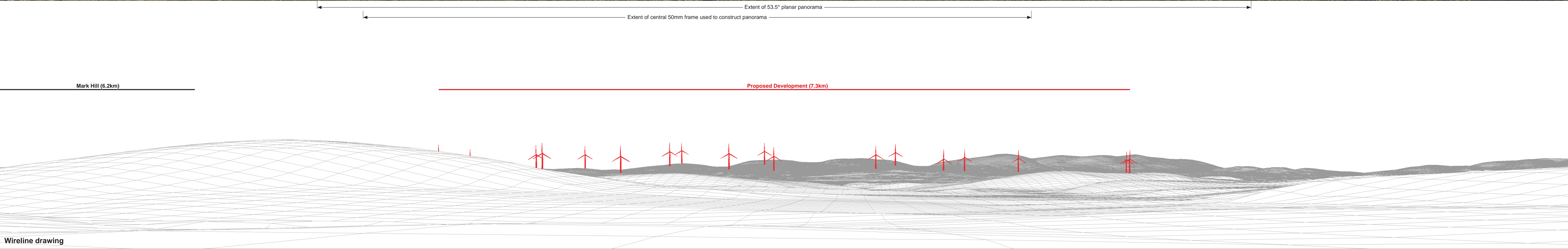
Note:  
1. Cumulative Windfarms: Full 60 km Search Area is not being shown on this figure. For full extent of 60 km Search Area and including Scoping sites see Figure 6.23.



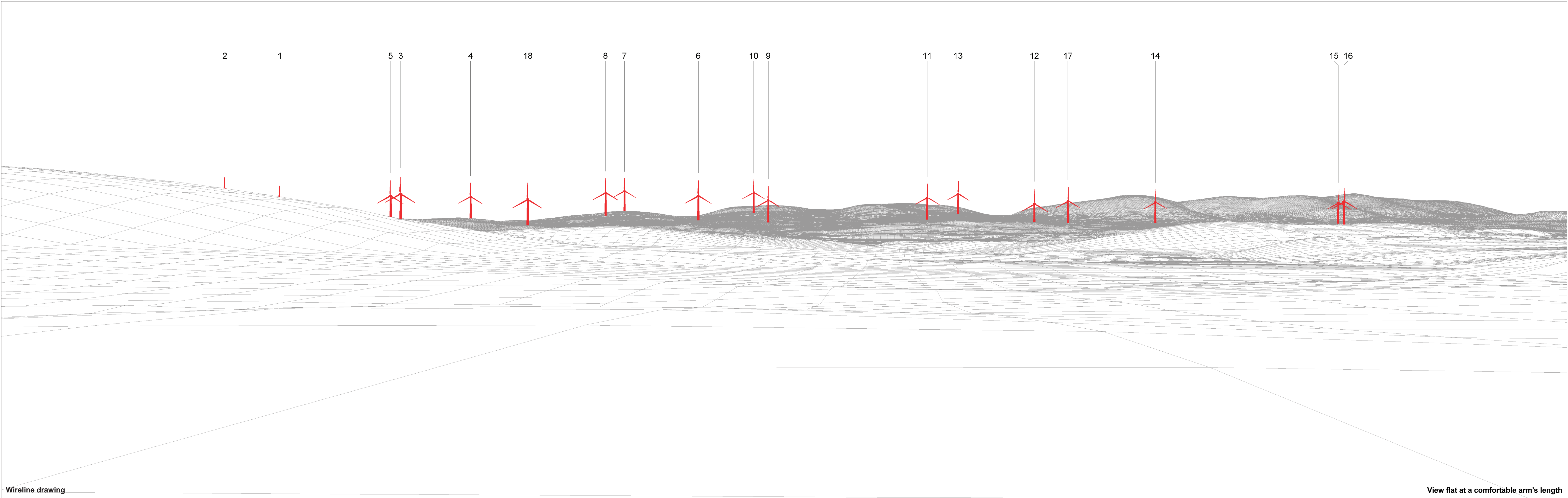
















Photomontage

View flat at a comfortable arm's length

OS reference:	230436 E 580450 N	Horizontal field of view:	53.5° (planar projection)	Camera:	Canon EOS 6D
Eye level:	147.87 m AOD	Principal distance	812.5 mm	Lens:	50mm (Canon EF 50mm f/1.4)
Direction of view:	356°	Paper size:	841 x 297 mm (half A1)	Camera height:	1.5 m AGL
Nearest turbine:	7.254 km	Correct printed image size:	820 x 260 mm	Date and time:	20/08/19, 10:23

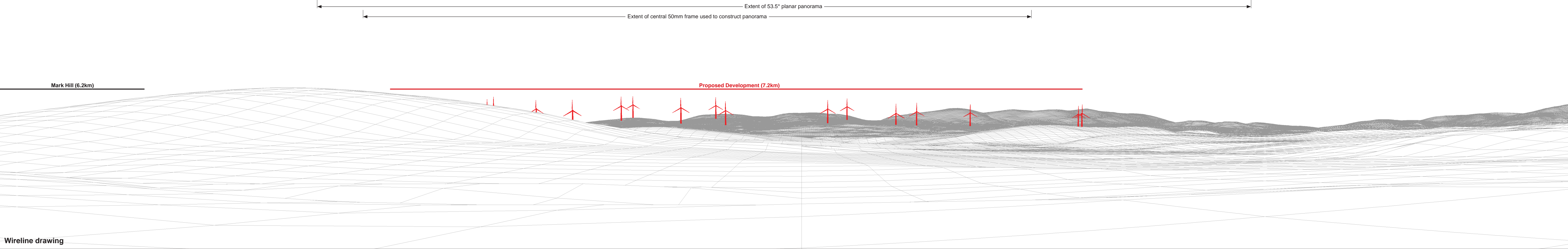
Figure: 6.36e  
Viewpoint 10: A714, Creeside





Baseline photograph

This image provides landscape and visual context only



OS reference:	230400 E 580470 N	Horizontal field of view:	90° (cylindrical projection)	Camera:	NIKON D750
Eye level:	147.65 m AOD	Principal distance	522 mm	Lens:	50mm (Canon EF 50mm f/1.4)
Direction of view:	359°			Camera height:	1.5 m AGL
Nearest turbine:	7.224 km			Date and time:	15/10/19, 18:15

Figure: 6.36f  
Viewpoint 10: A714, Creeside





Photomontage (2000 candela lights)

View flat at a comfortable arm's length

OS reference: 230400 E 580470 N  
Eye level: 147.65 m AOD  
Direction of view: 359°  
Nearest turbine: 7.224 km

Horizontal field of view: 53.5° (planar projection)  
Principal distance: 812.5 mm  
Paper size: 841 x 297 mm (half A1)  
Correct printed image size: 820 x 260 mm

Camera: NIKON D750  
Lens: 50mm (Canon EF 50mm f/1.4)  
Camera height: 1.5 m AGL  
Date and time: 15/10/19, 18:15

Note: All proposed development turbines are lit.

Figure: 6.36g  
Viewpoint 10: A714, Creeside  
© Crown copyright and database rights 2019 Ordnance Survey 0100031673





Photomontage (200 candela lights)

View flat at a comfortable arm's length