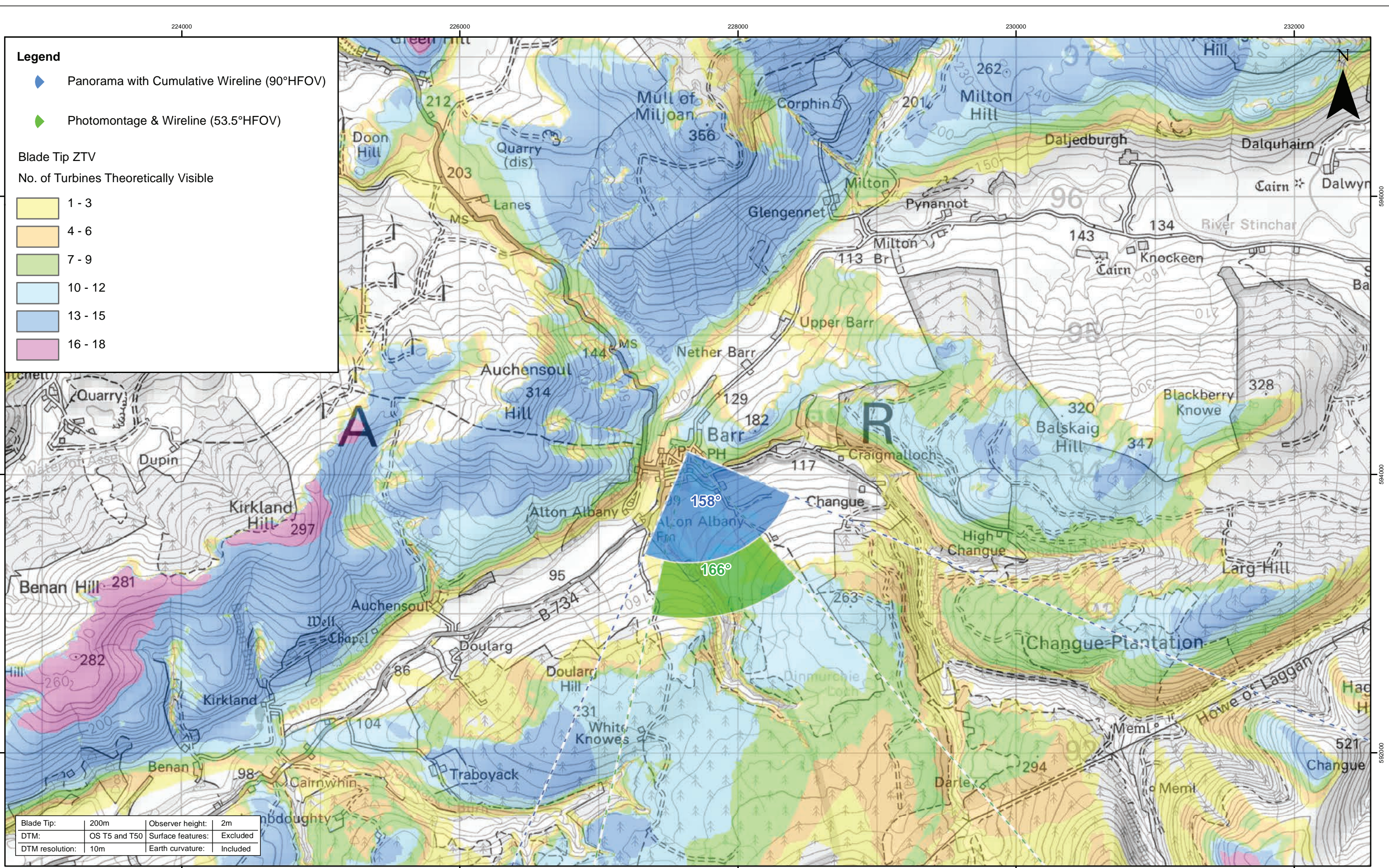
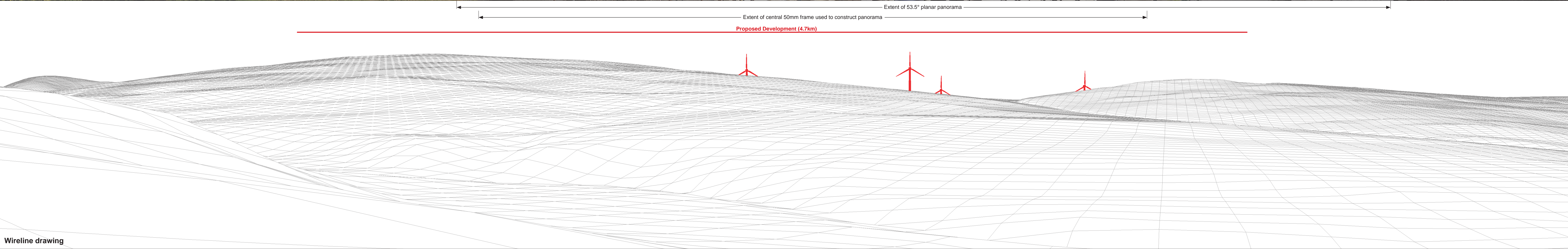
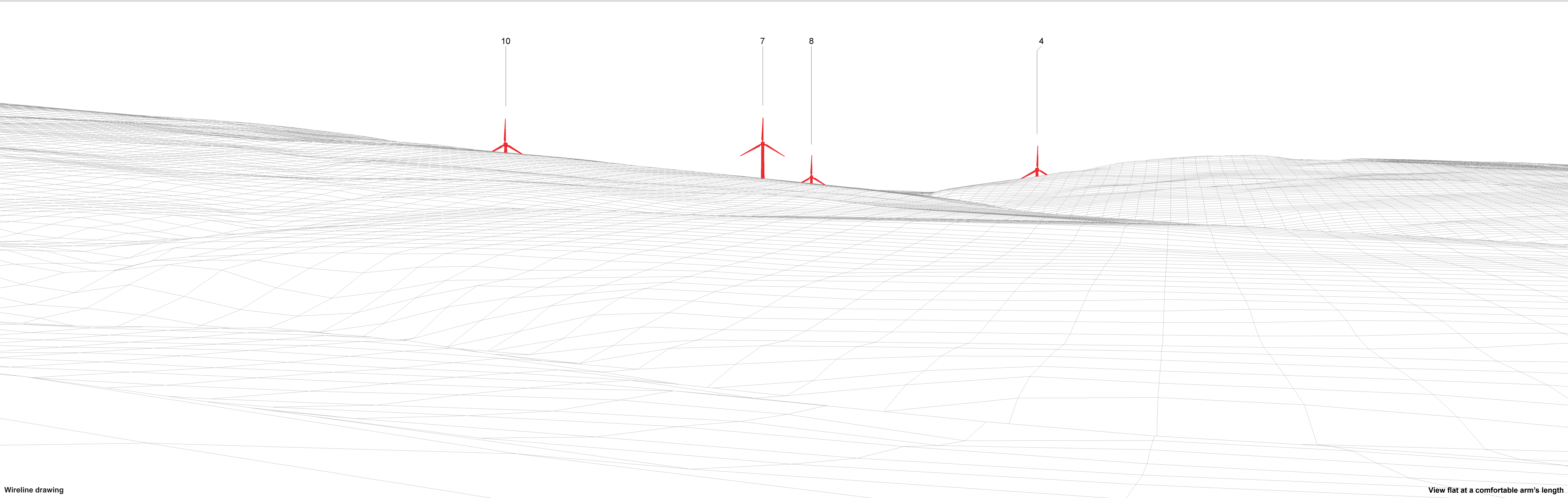


Note:  
1. Cumulative Windfarms: Full 60 km Search Area is not being shown on this figure. For full extent of 60 km Search Area and including Scoping sites see Figure 6.23.



				1:25,000 Scale @ A3			<b>Clauchrie Windfarm</b> EIA Report Viewpoint 9: Barr (Glebe Rd)		Drg No ED1_1263_EIAR
Rev	Date	By	Comment	© Crown Copyright 2019. All rights reserved. Ordnance Survey Licence 0100031673. Contains OS data © Crown copyright and database right (2019)		Datum: OSGB36 Projection: TM			
B	10/12/19	JM	Second Issue.					Rev	B
A	11/11/19	JM	First Issue.					Date	10/12/19
								Figure	6.35a





Wireline drawing

View flat at a comfortable arm's length

OS reference:	227639 E 594165 N	Horizontal field of view:	53.5° (planar projection)	Camera:	Canon EOS 6D
Eye level:	111.59 m AOD	Principal distance	812.5 mm	Lens:	50mm (Canon EF 50mm f/1.4)
Direction of view:	166°	Paper size:	841 x 297 mm (half A1)	Camera height:	1.5 m AGL
Nearest turbine:	4.716 km	Correct printed image size:	820 x 260 mm	Date and time:	20/08/19, 15:36

Figure: 6.35c  
Viewpoint 9: Barr, Glenginnet Road



Photomontage

View flat at a comfortable arm's length

OS reference:	227639 E 594165 N	Horizontal field of view:	53.5° (planar projection)	Camera:	Canon EOS 6D
Eye level:	111.59 m AOD	Principal distance	812.5 mm	Lens:	50mm (Canon EF 50mm f/1.4)
Direction of view:	166°	Paper size:	841 x 297 mm (half A1)	Camera height:	1.5 m AGL
Nearest turbine:	4.716 km	Correct printed image size:	820 x 260 mm	Date and time:	20/08/19, 15:36

Figure: 6.35d  
Viewpoint 9: Barr, Glenginnet Road