



# Appendix 9.5

## Baseline Noise Conditions

# Table of contents

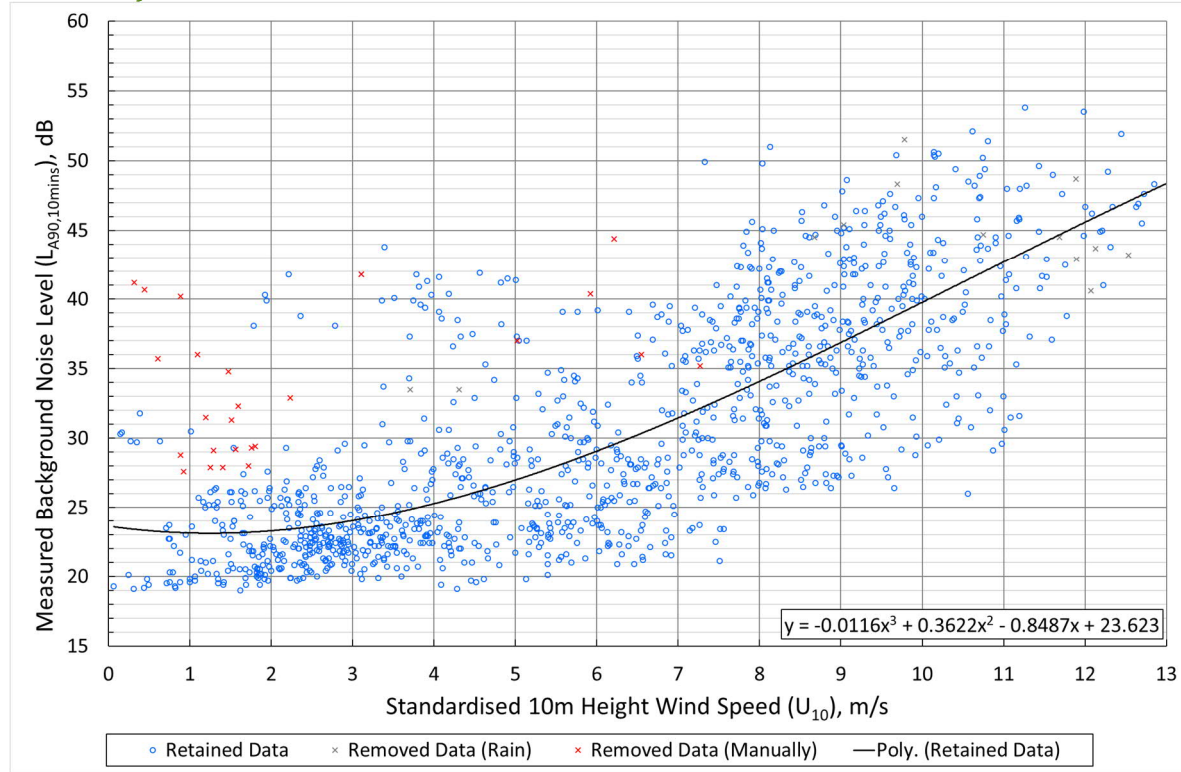
<b>9.1</b>	<b>Carrick Baseline Noise Survey Results</b>	<b>3</b>
9.1.1	Measurement Location A: Blair Farm	3
9.1.2	Measurement Location B: Glenalla	3
9.1.3	Measurement Location C: Genoch Cottage	4
9.1.4	Measurement Location D: Tairlaw Toll	4
9.1.5	Measurement Location E: White Row	5
9.1.6	Measurement Location F: Doughty Farm	5
<b>9.2</b>	<b>Knockcronal Baseline Noise Survey Results</b>	<b>6</b>
9.2.1	Measurement Location: Glenalla	6
9.2.2	Measurement Location: Genoch Cottage	6
9.2.3	Measurement Location: Tairlaw Toll House	7
<b>9.3</b>	<b>Comparison of Carrick and Knockcronal Baseline Survey Results</b>	<b>7</b>
9.3.1	Measurement Location: Glenalla	7
9.3.2	Measurement Location: Genoch Cottage	8
9.3.3	Measurement Location: Tairlaw Toll House	8



# 9.1 Carrick Baseline Noise Survey Results

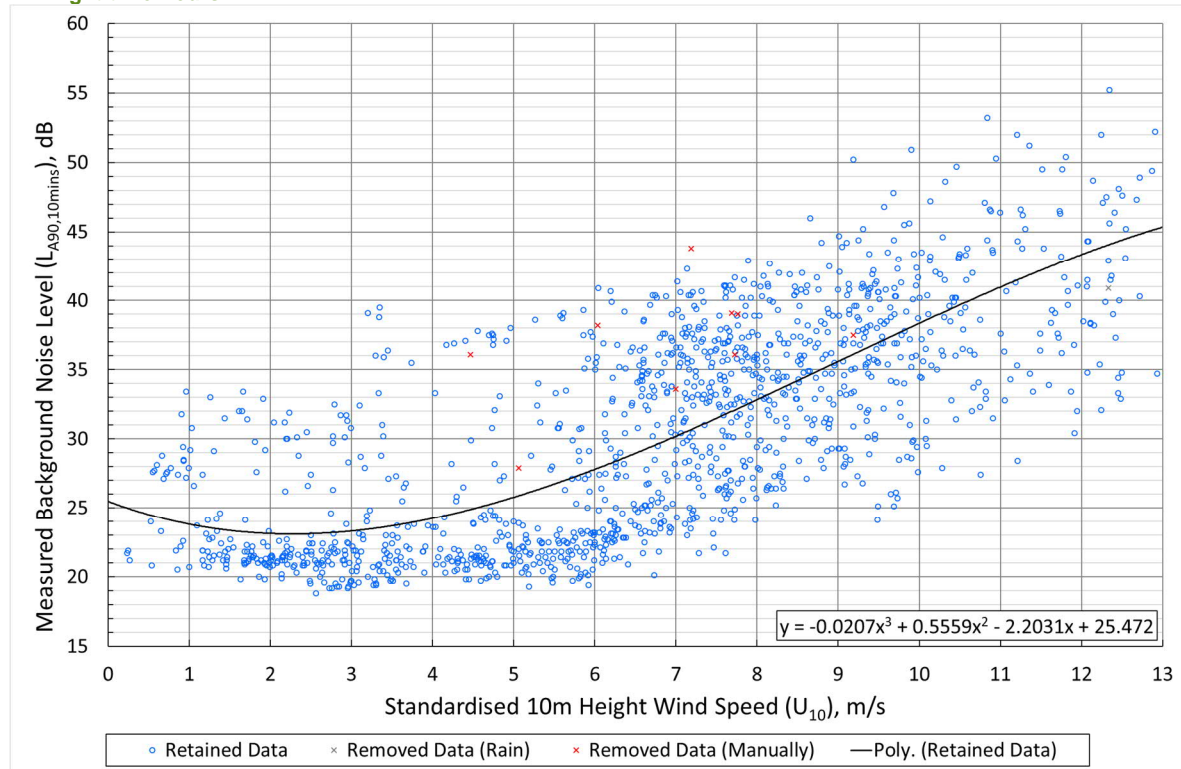
## 9.1.1 Measurement Location A: Blair Farm

Quiet Daytime Hours



Graph 9.5.1 Location A Blair Farm – Quiet Daytime Background Noise (dB(A)) Versus Wind Speed (m/s)

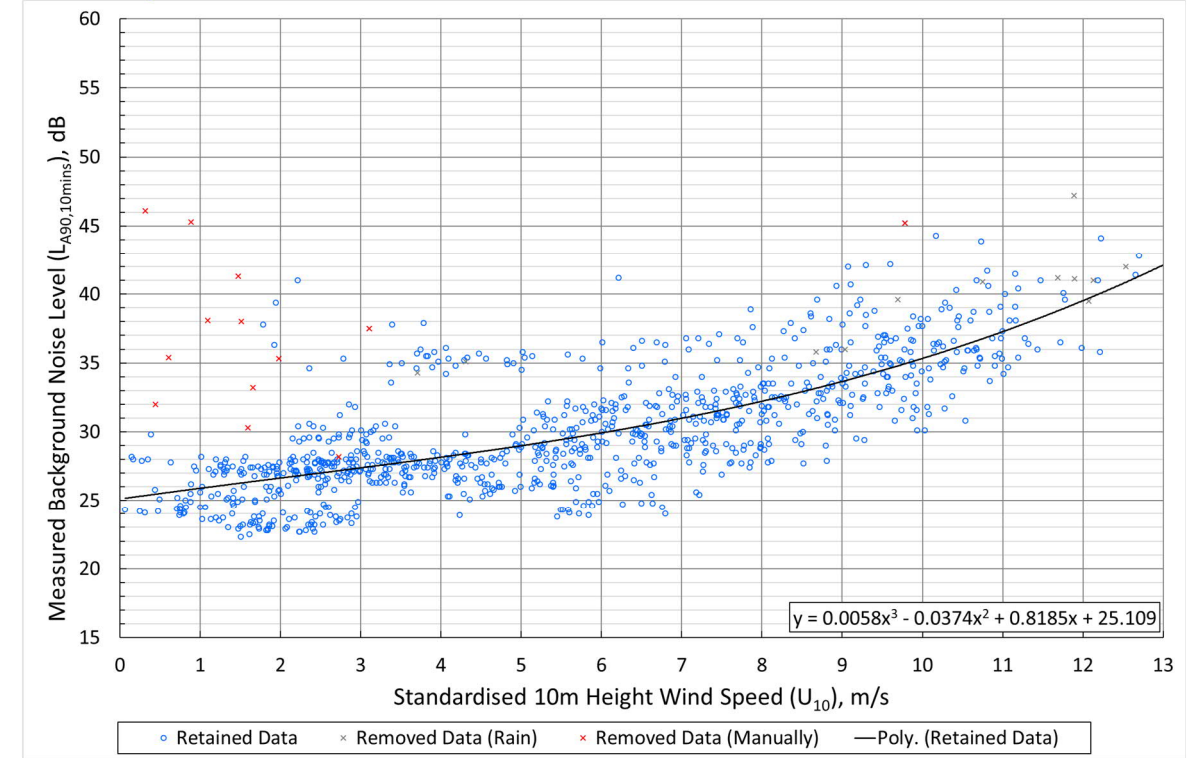
Night-time Hours



Graph 9.5.2 Location A Blair Farm – Night-time Background Noise (dB(A)) Versus Wind Speed (m/s)

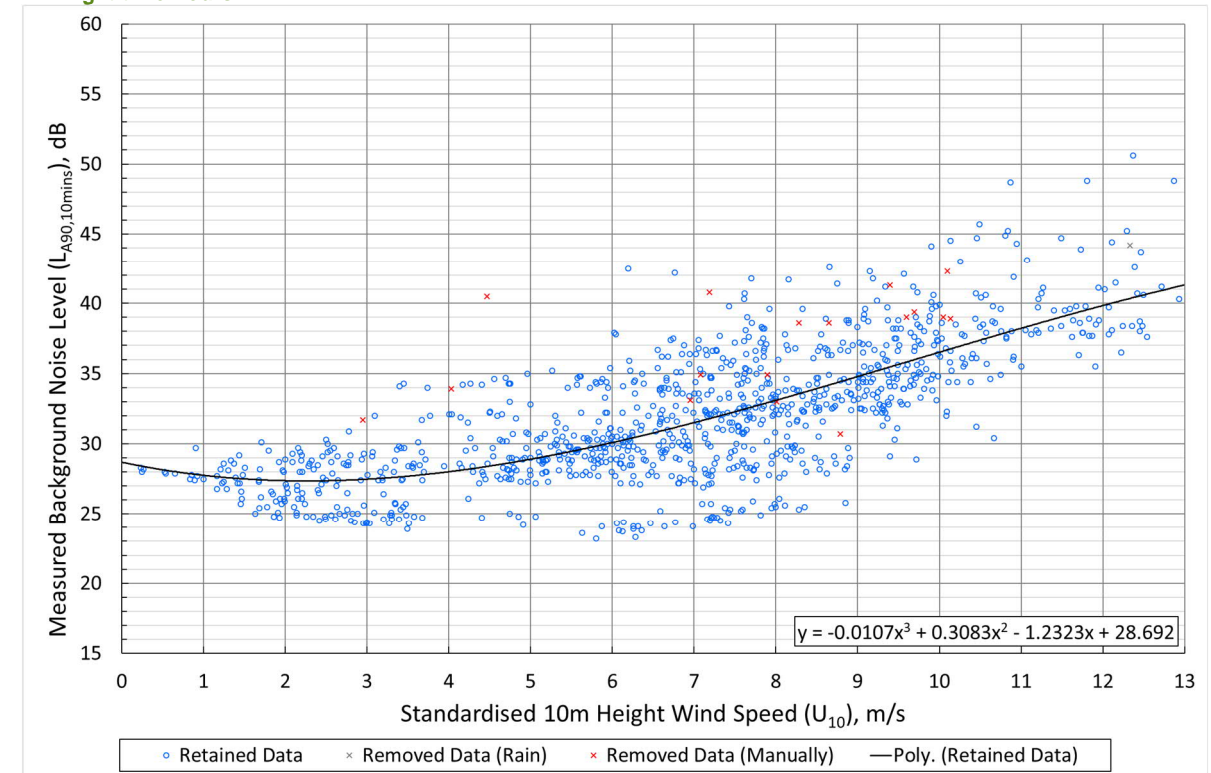
## 9.1.2 Measurement Location B: Glenalla

Quiet Daytime Hours



Graph 9.5.3 Location B Glenalla – Quiet Daytime Background Noise (dB(A)) Versus Wind Speed (m/s)

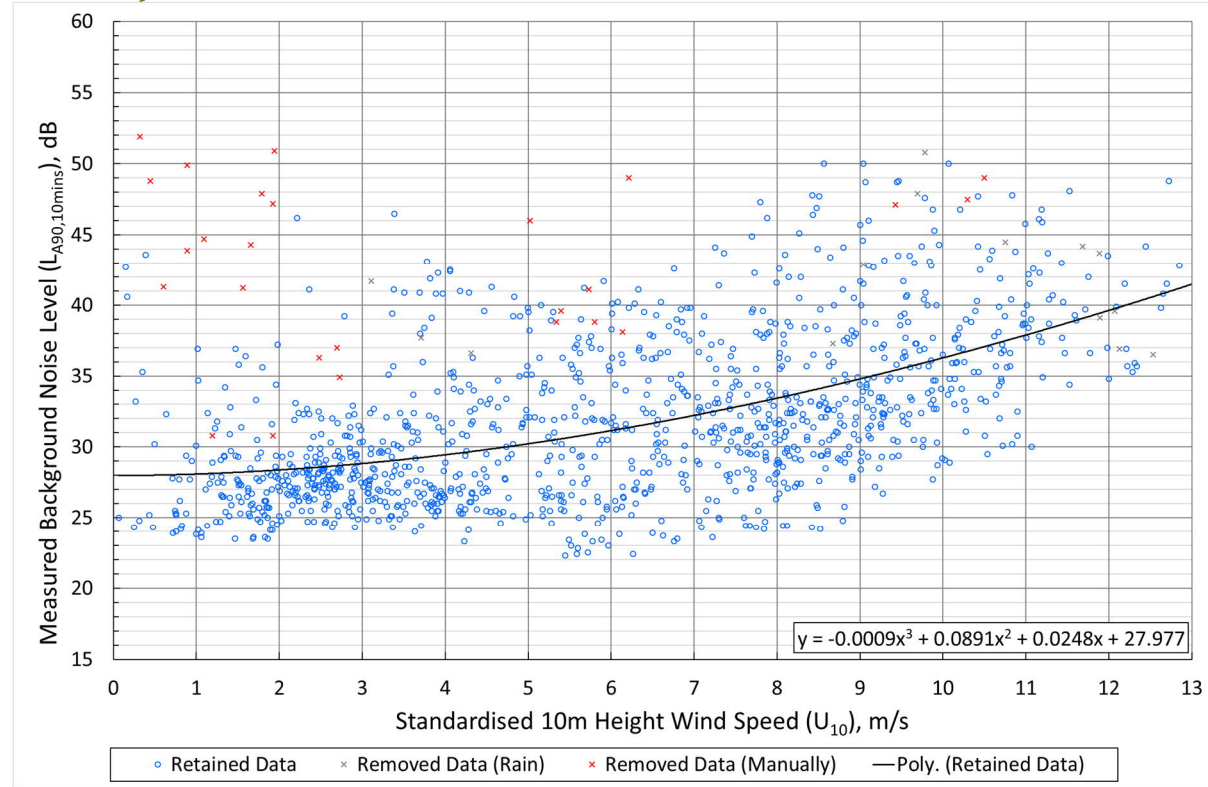
Night-time Hours



Graph 9.5.4 Location B Glenalla – Night-time Background Noise (dB(A)) Versus Wind Speed (m/s)

9.1.3 Measurement Location C: Genoch Cottage

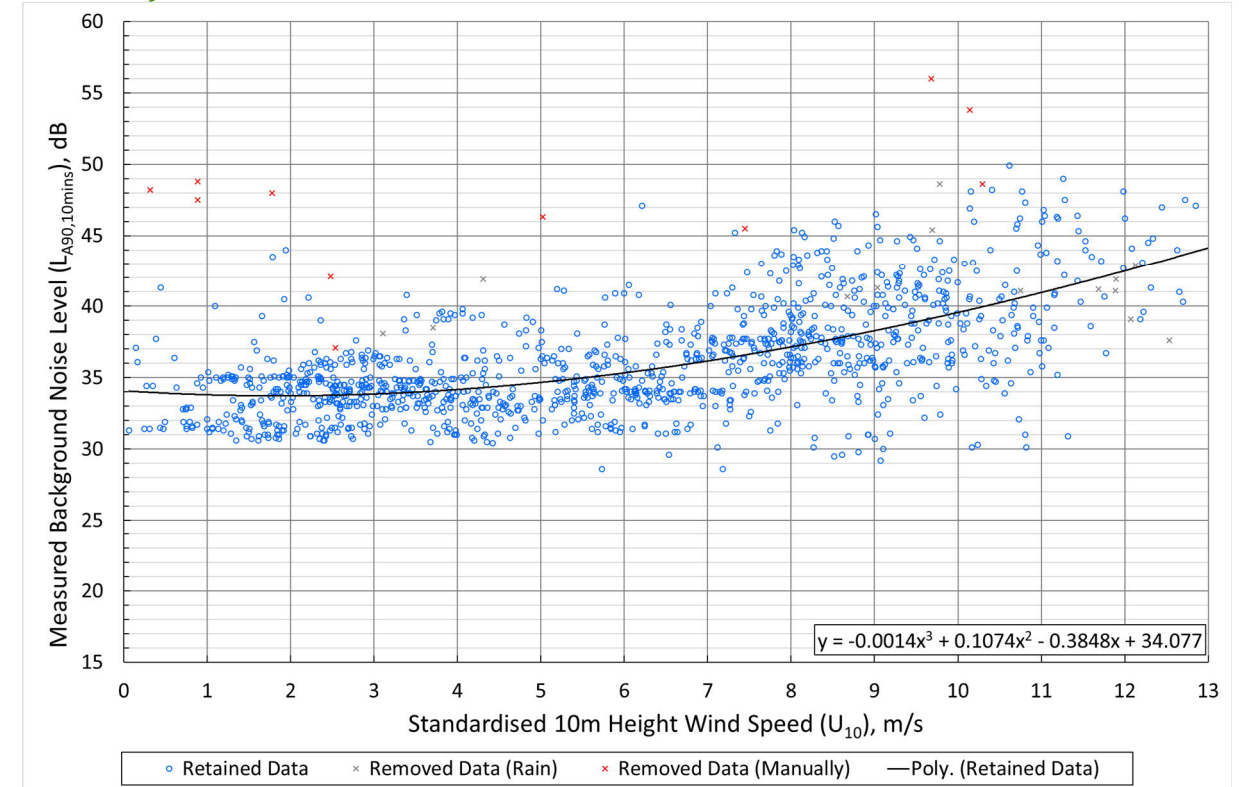
Quiet Daytime Hours



Graph 9.5.5 Location C Genoch Cottage – Quiet Daytime Background Noise (dB(A)) Versus Wind Speed (m/s)

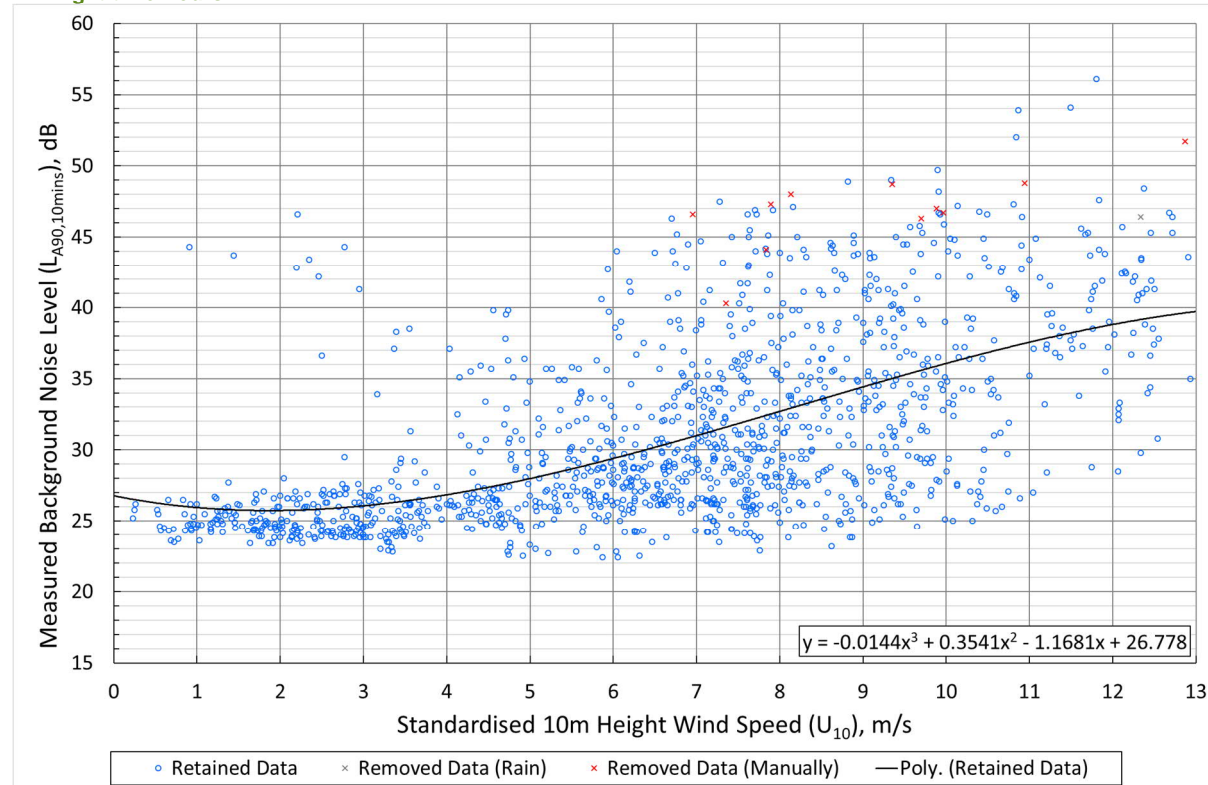
9.1.4 Measurement Location D: Tairlaw Toll

Quiet Daytime Hours



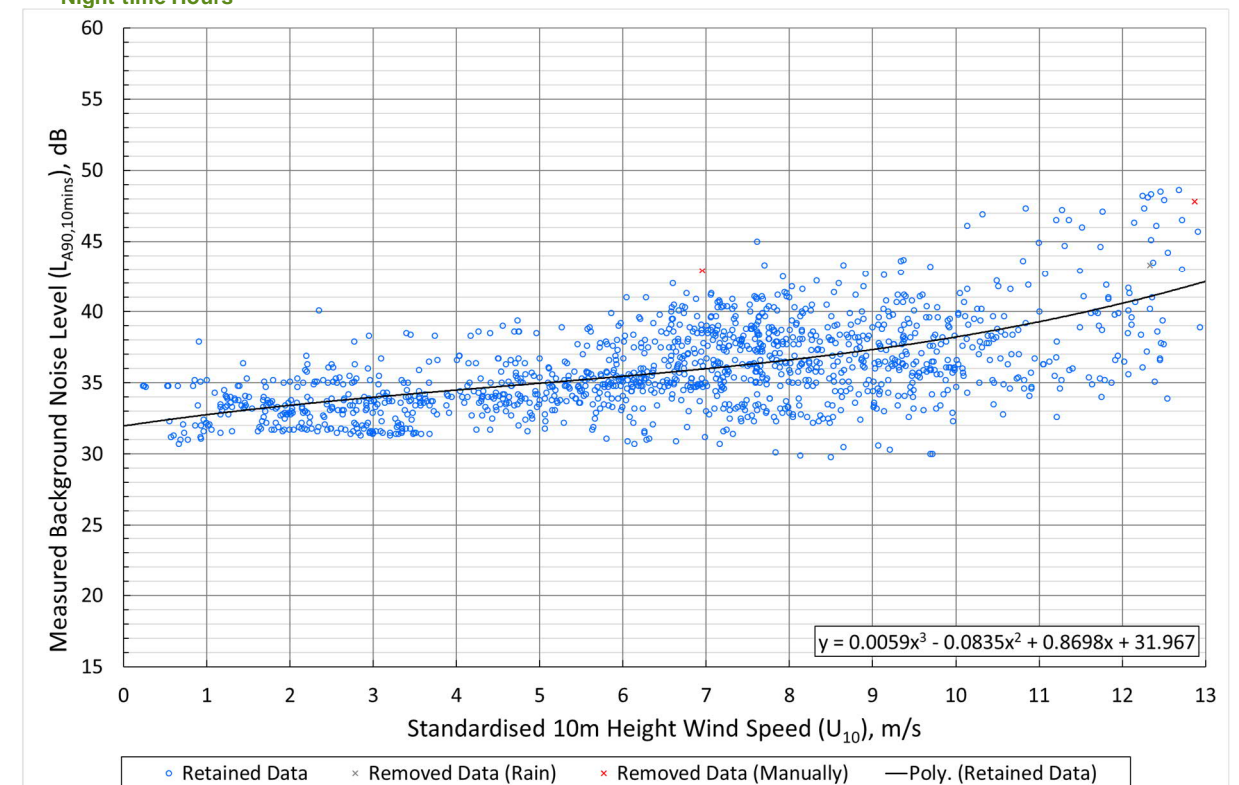
Graph 9.5.7 Location D Tairlaw Toll – Quiet Daytime Background Noise (dB(A)) Versus Wind Speed (m/s)

Night-time Hours



Graph 9.5.6 Location C Genoch Cottage – Night-time Background Noise (dB(A)) Versus Wind Speed (m/s)

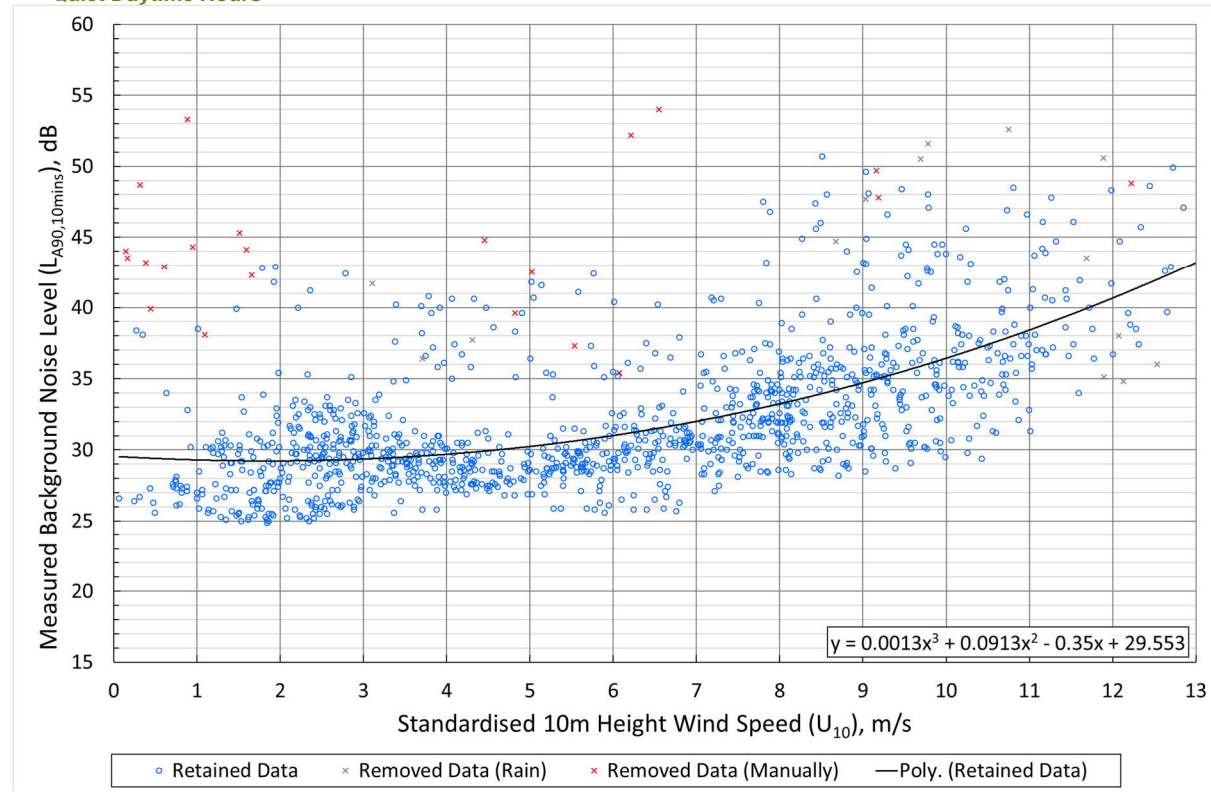
Night-time Hours



Graph 9.5.8 Location D Tairlaw Toll – Night-time Background Noise (dB(A)) Versus Wind Speed (m/s)

9.1.5 Measurement Location E: White Row

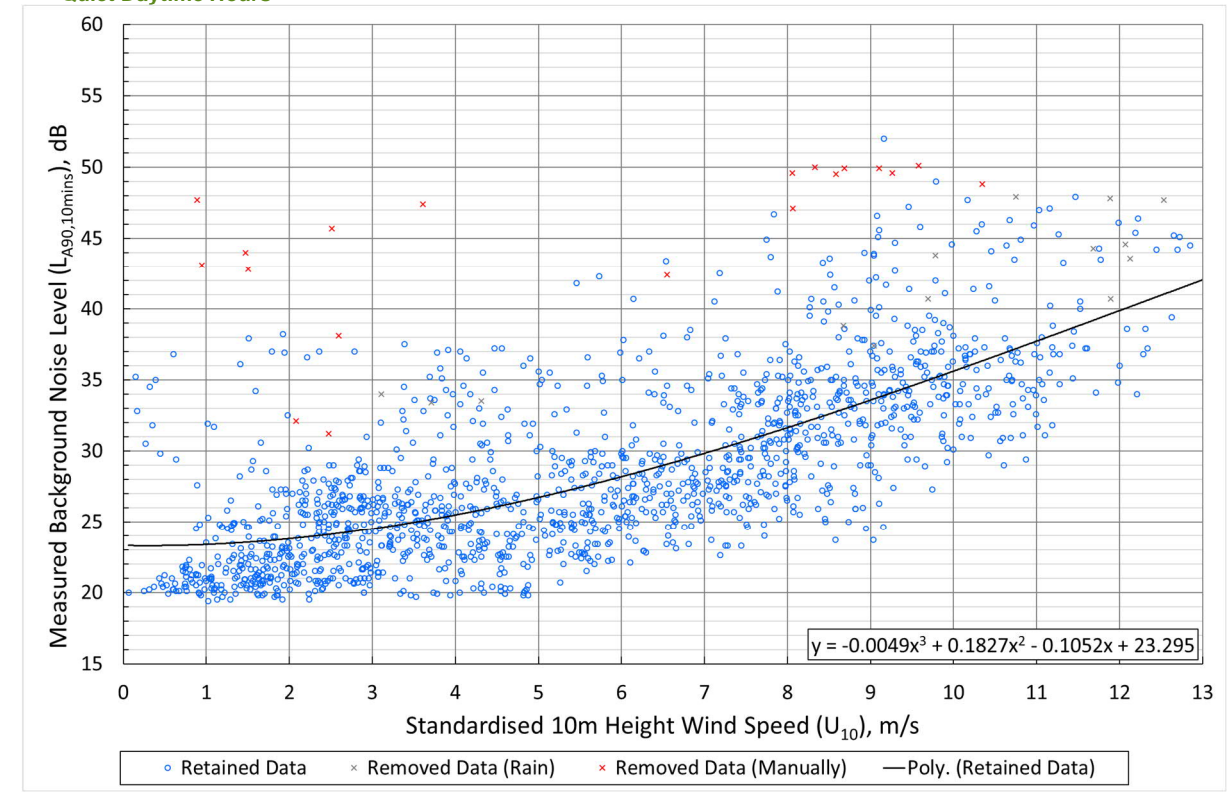
Quiet Daytime Hours



Graph 9.5.9 Location E White Row – Quiet Daytime Background Noise (dB(A)) Versus Wind Speed (m/s)

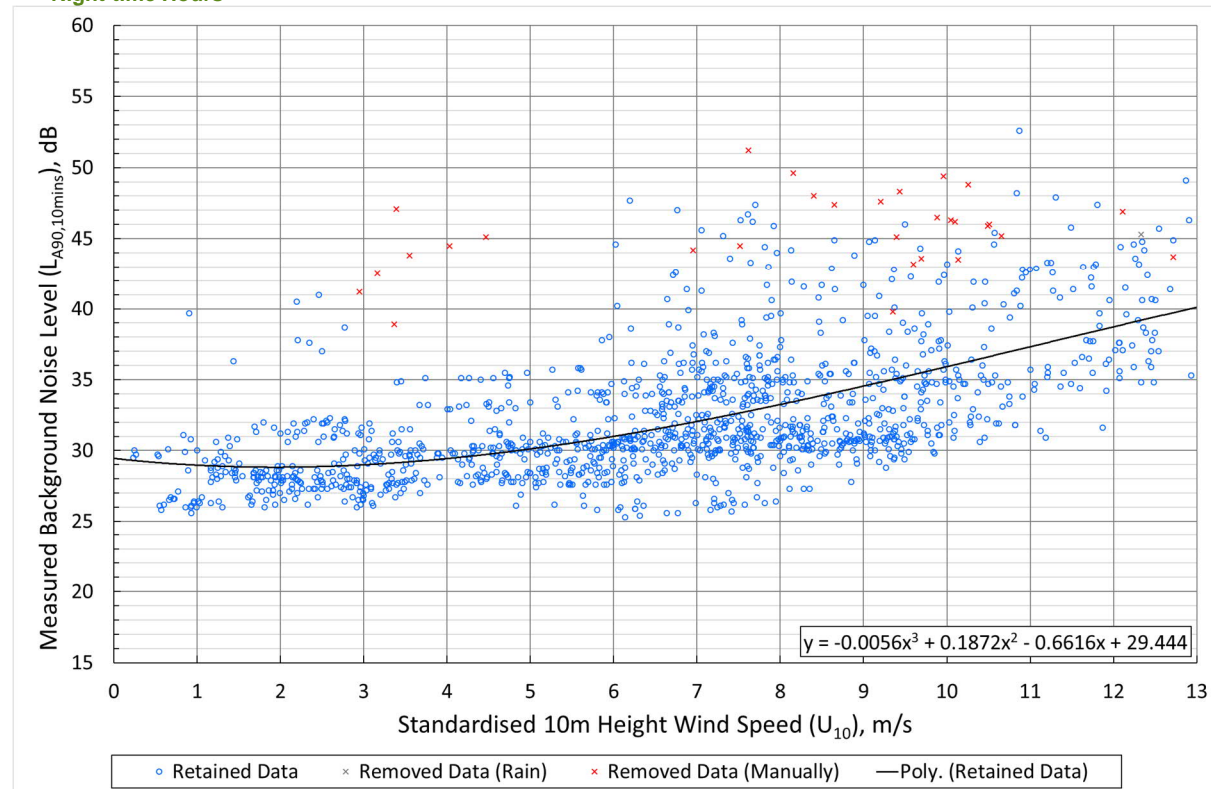
9.1.6 Measurement Location F: Doughty Farm

Quiet Daytime Hours



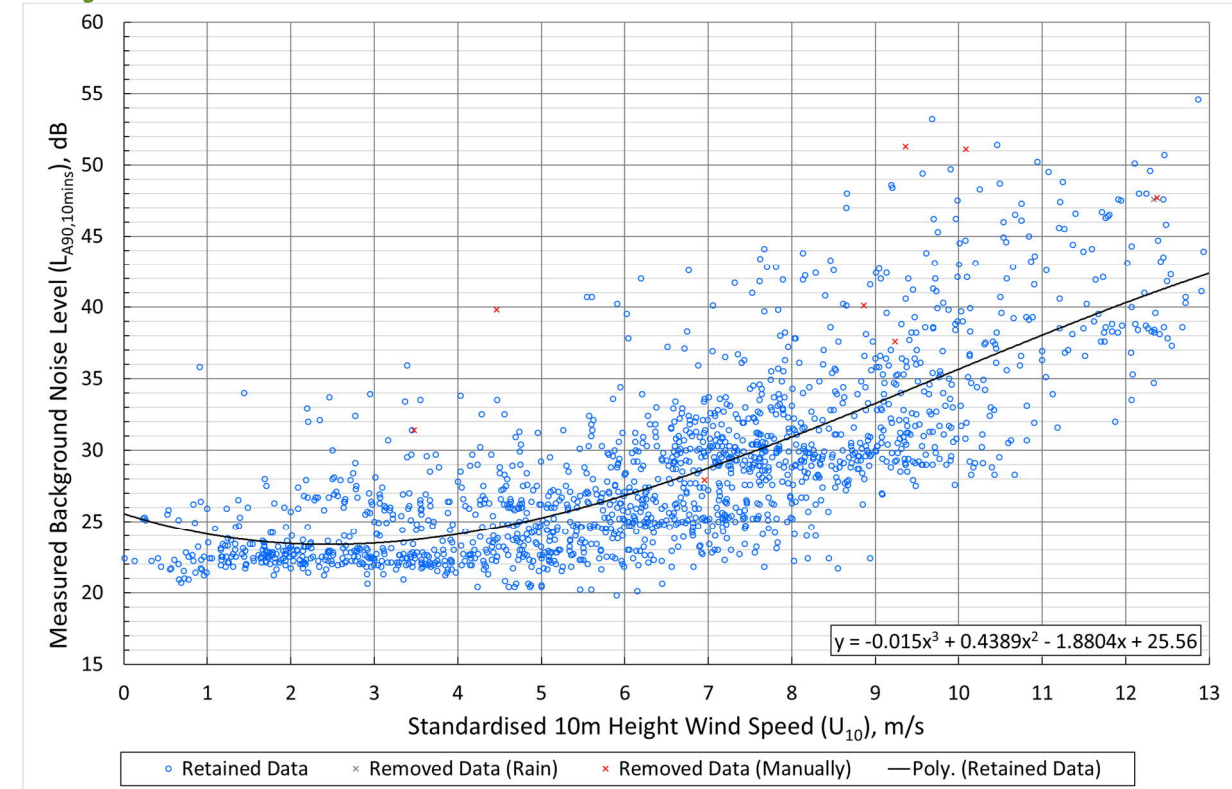
Graph 9.5.11 Location F Doughty Farm – Quiet Daytime Background Noise (dB(A)) Versus Wind Speed (m/s)

Night-time Hours



Graph 9.5.10 Location E White Row – Night-time Background Noise (dB(A)) Versus Wind Speed (m/s)

Night-time Hours



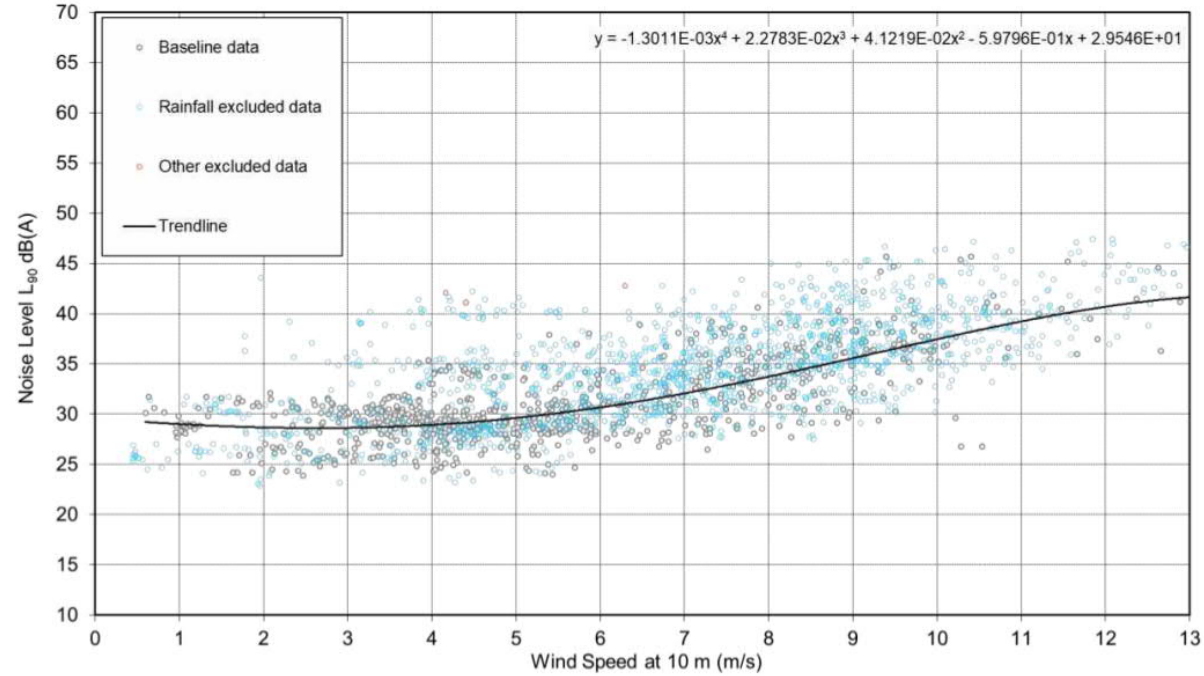
Graph 9.5.12 Location F Doughty Farm – Night-time Background Noise (dB(A)) Versus Wind Speed (m/s)

# 9.2 Knockcronal Baseline Noise Survey Results

1. The following baseline assessment graphs have been taken from the publicly available Knockcronal Windfarm Scoping Report.

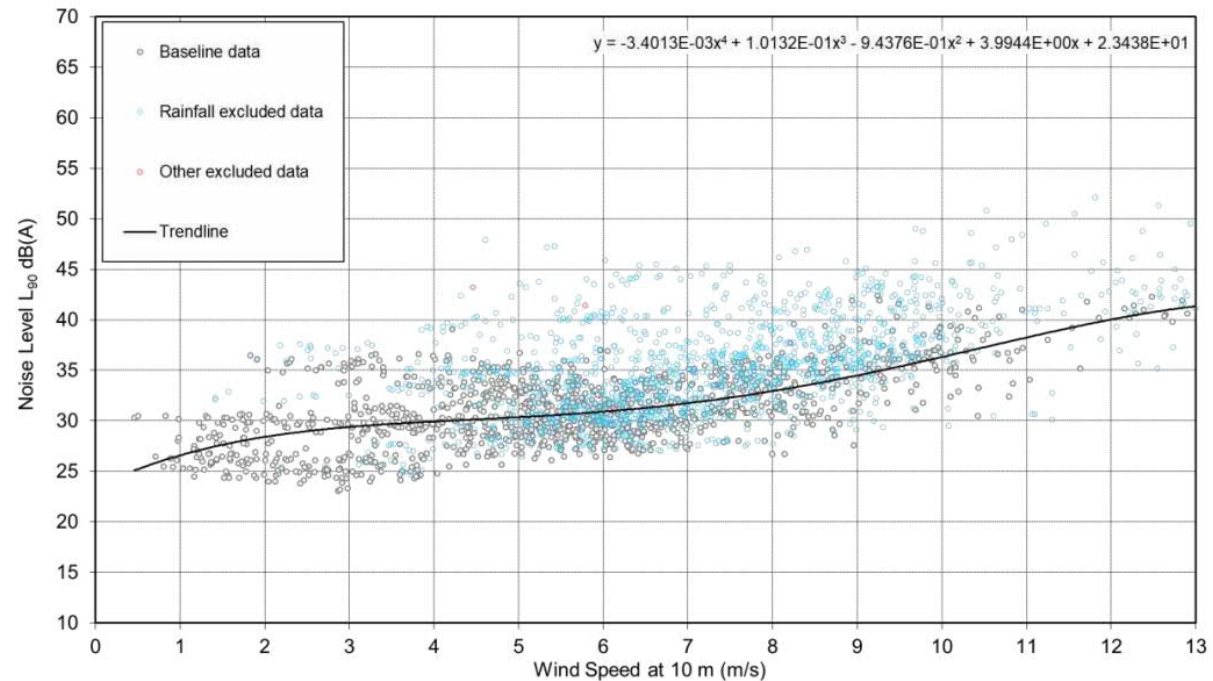
## 9.2.1 Measurement Location: Glenalla

Quiet Daytime Hours



Graph 9.5.13 Location: Glenalla – Quiet Daytime Background Noise (dB(A)) Versus Wind Speed (m/s)

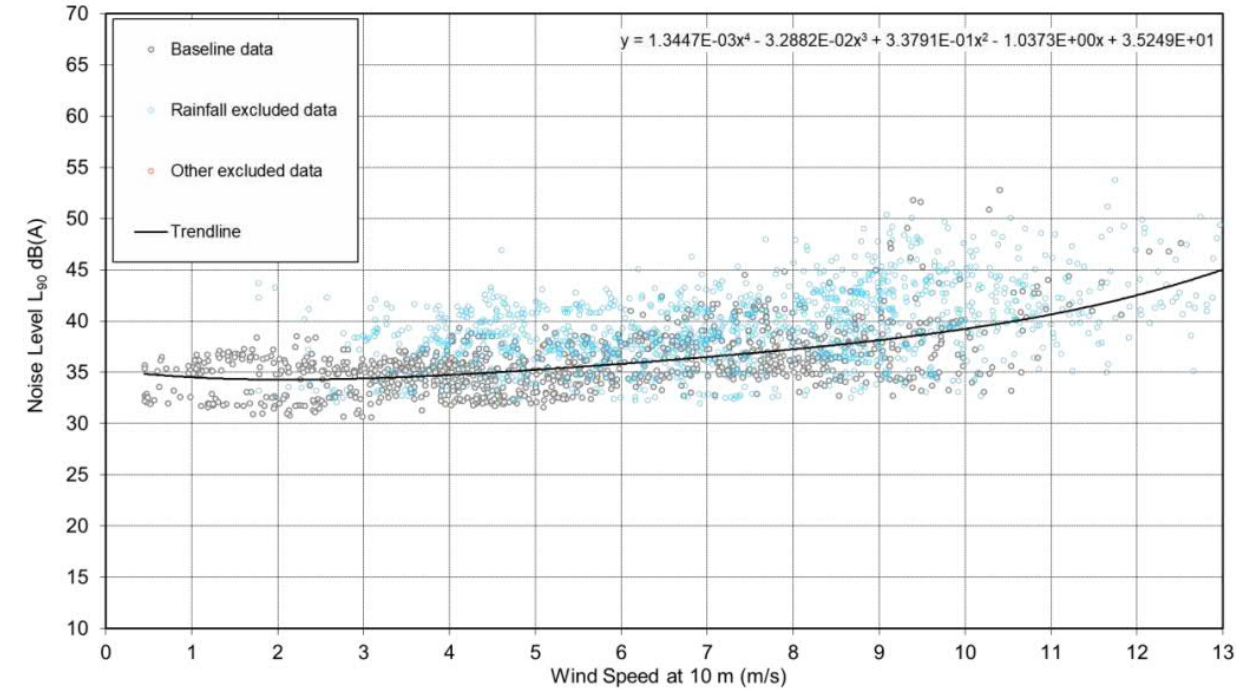
Night-time Hours



Graph 9.5.14 Location: Glenalla – Night-time Background Noise (dB(A)) Versus Wind Speed (m/s)

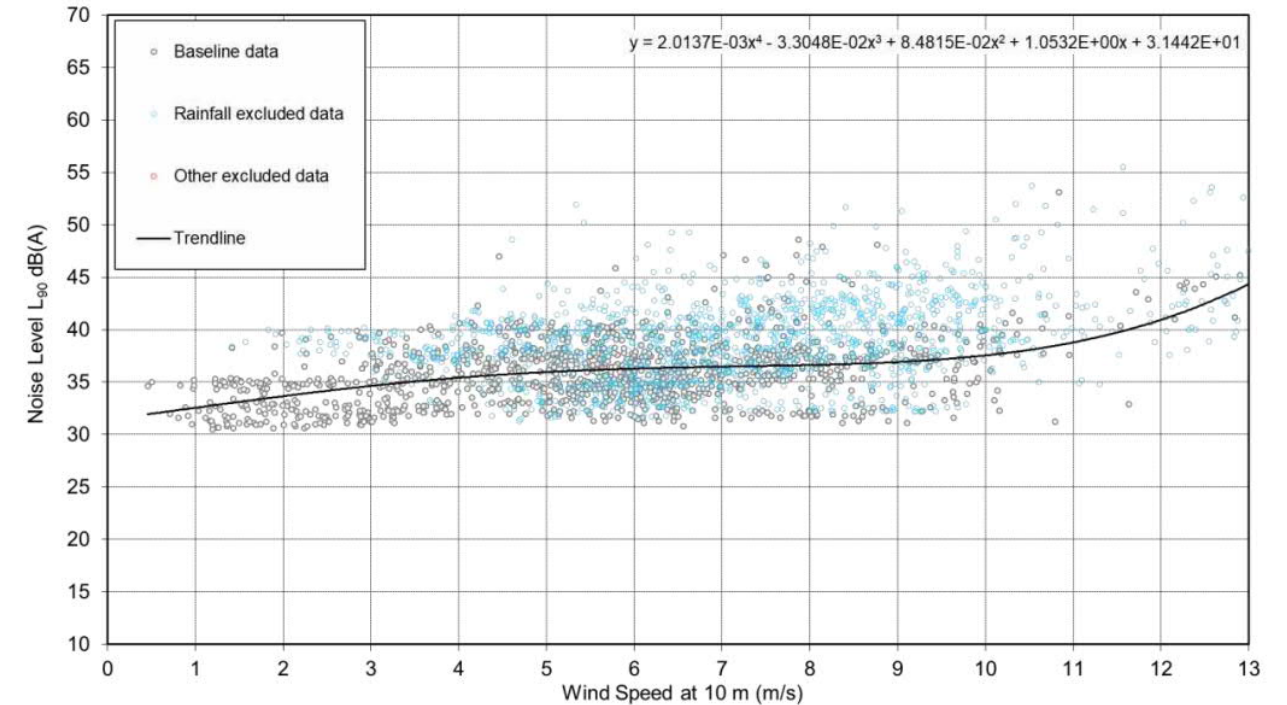
## 9.2.2 Measurement Location: Genoch Cottage

Quiet Daytime Hours



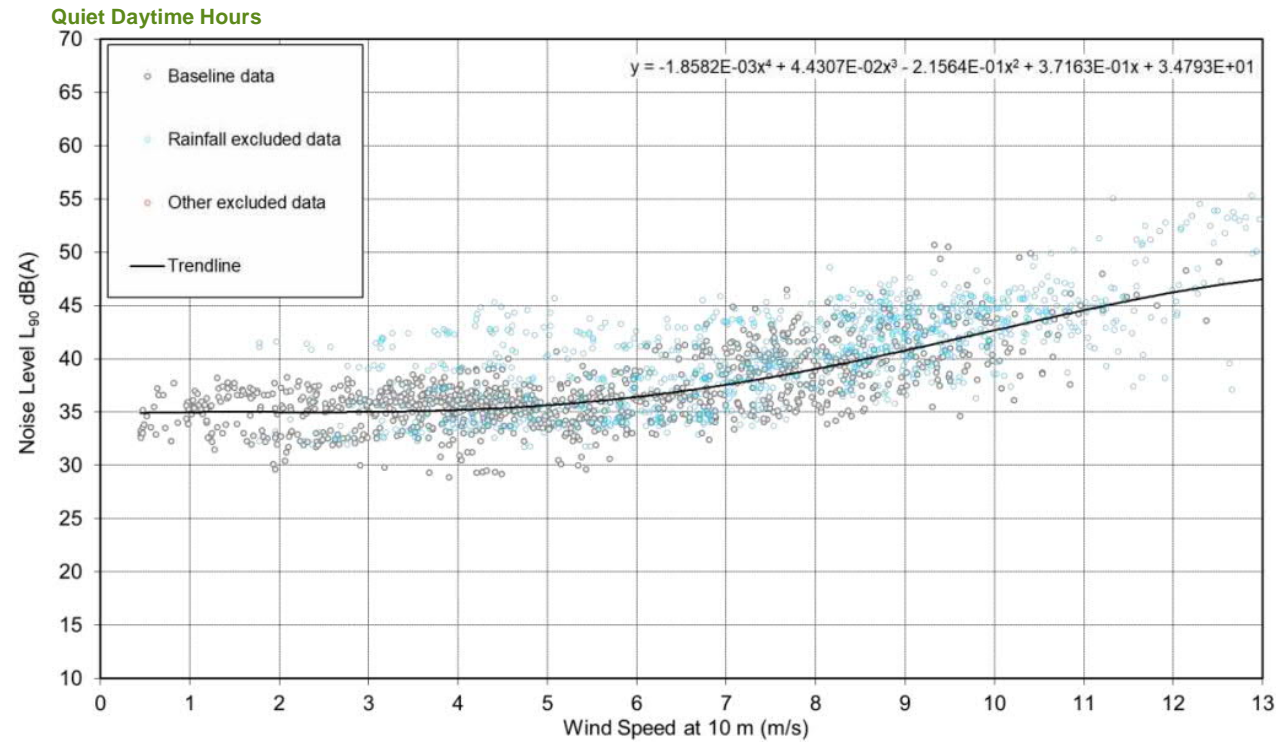
Graph 9.5.15 Location: Genoch Cottage – Quiet Daytime Background Noise (dB(A)) Versus Wind Speed (m/s)

Night-time Hours

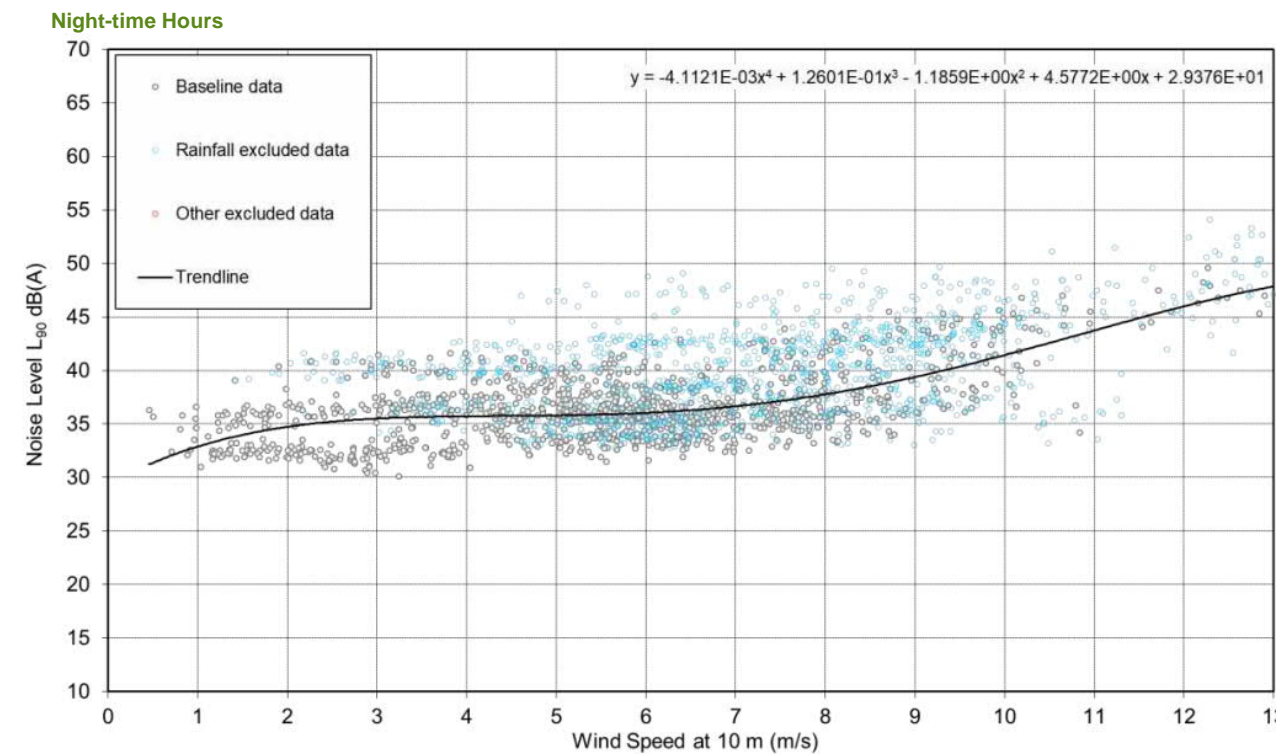


Graph 9.5.16 Location: Genoch Cottage – Night-time Background Noise (dB(A)) Versus Wind Speed (m/s)

9.2.3 Measurement Location: Tairlaw Toll House



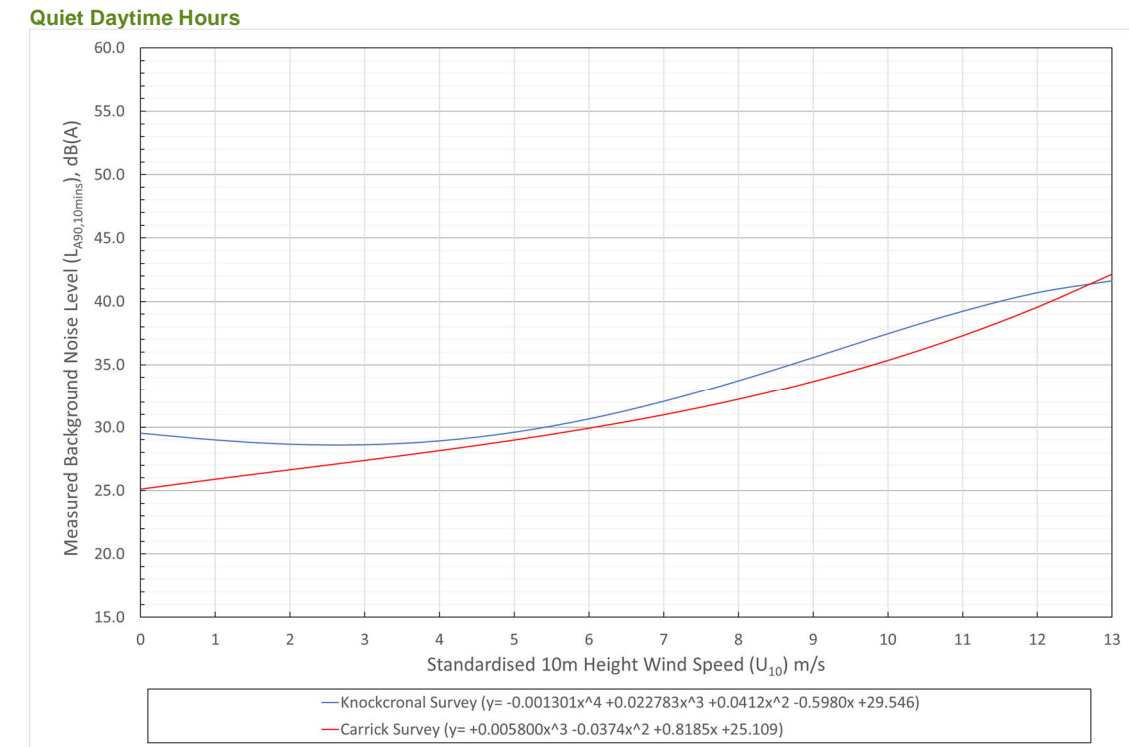
Graph 9.5.17 Location: Tairlaw Toll House – Quiet Daytime Background Noise (dB(A)) Versus Wind Speed (m/s)



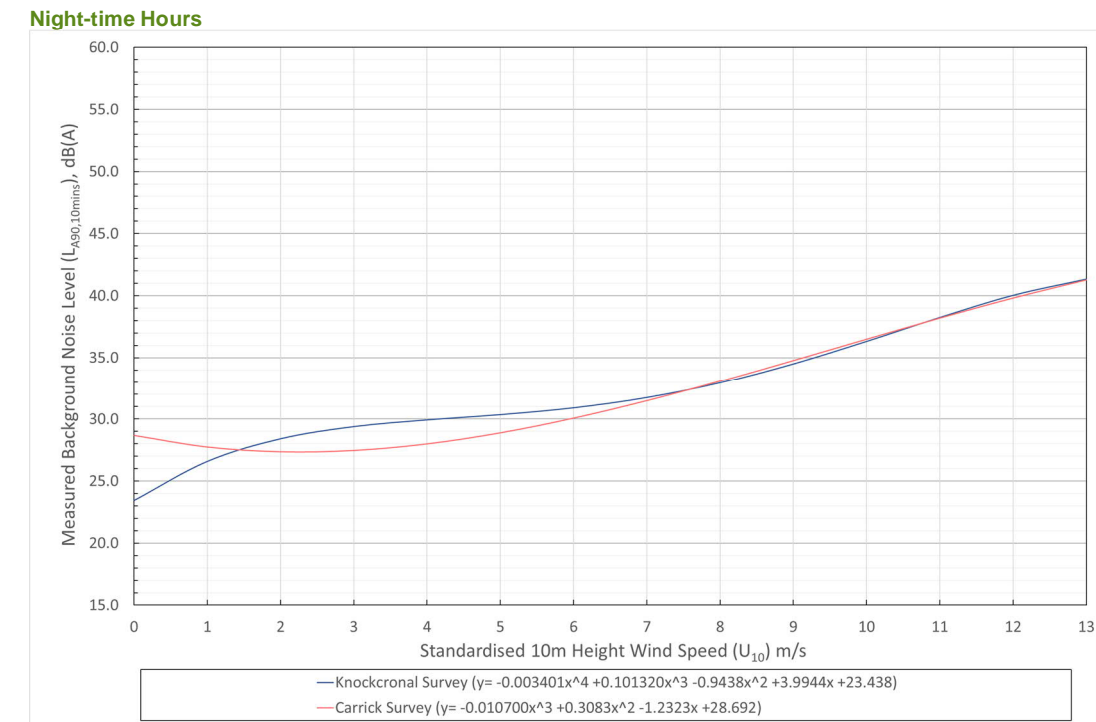
Graph 9.5.18 Location: Tairlaw Toll House – Night-time Background Noise (dB(A)) Versus Wind Speed (m/s)

# 9.3 Comparison of Carrick and Knockcronal Baseline Survey Results

9.3.1 Measurement Location: Glenalla



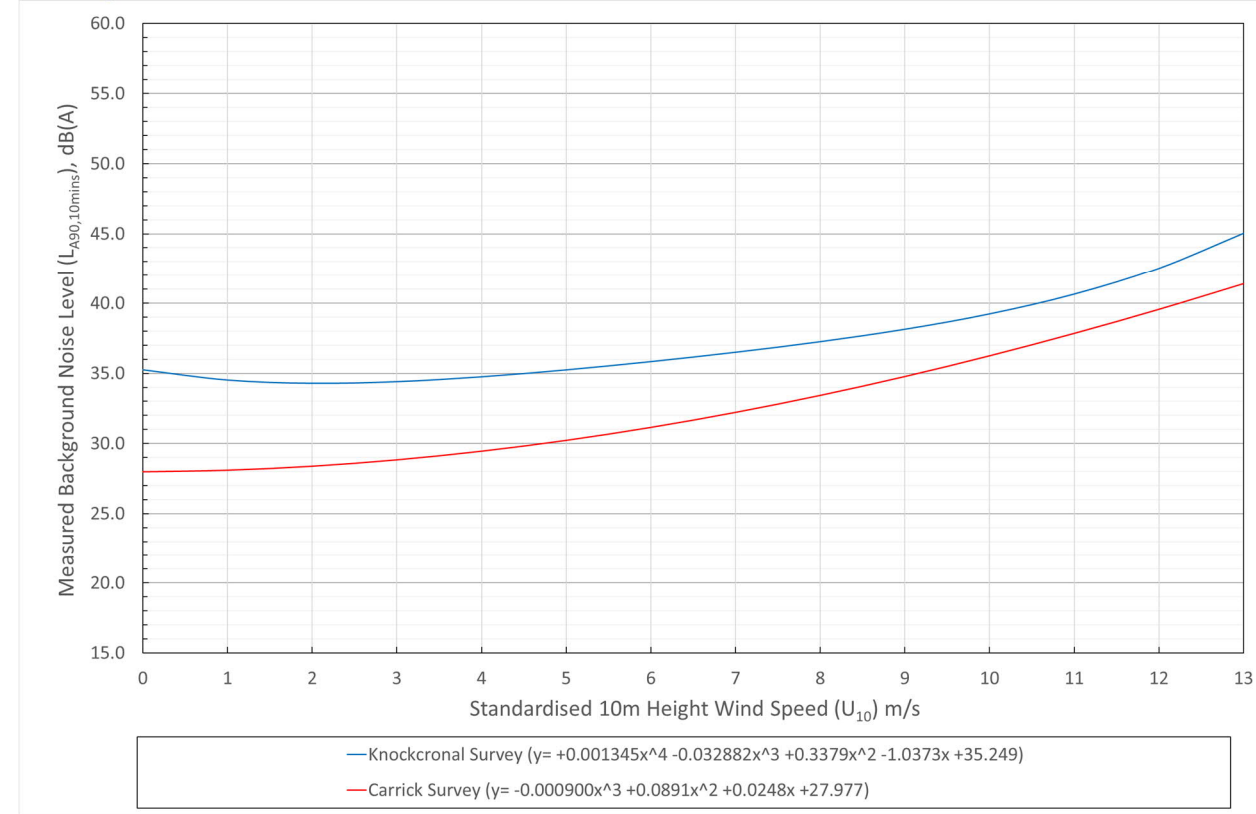
Graph 9.5.19 Location: Glenalla – Quiet Daytime Background Noise Comparison (dB(A)) Versus Wind Speed (m/s)



Graph 9.5.20 Location: Glenalla – Night-time Background Noise Comparison (dB(A)) Versus Wind Speed (m/s)

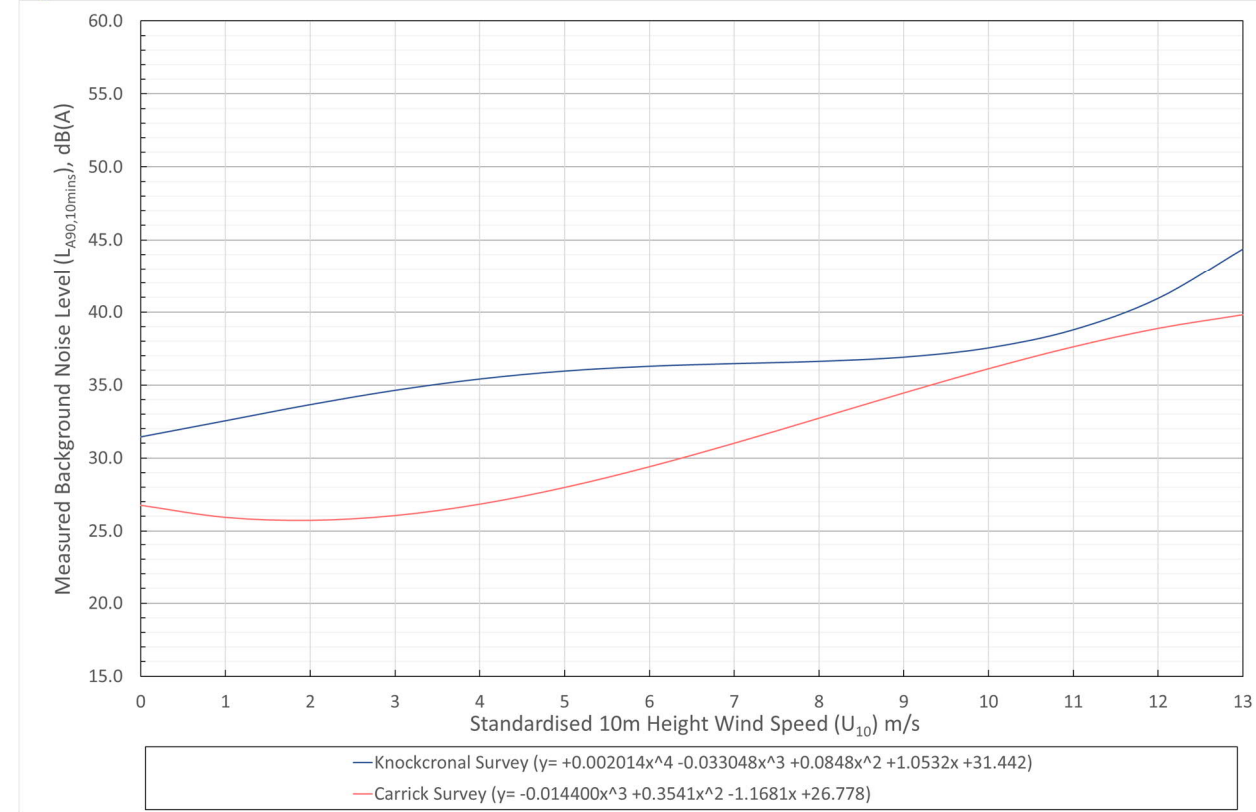
9.3.2 Measurement Location: Genoch Cottage

Quiet Daytime Hours



Graph 9.5.21 Location: Genoch Cottage – Quiet Daytime Background Noise Comparison (dB(A)) Versus Wind Speed (m/s)

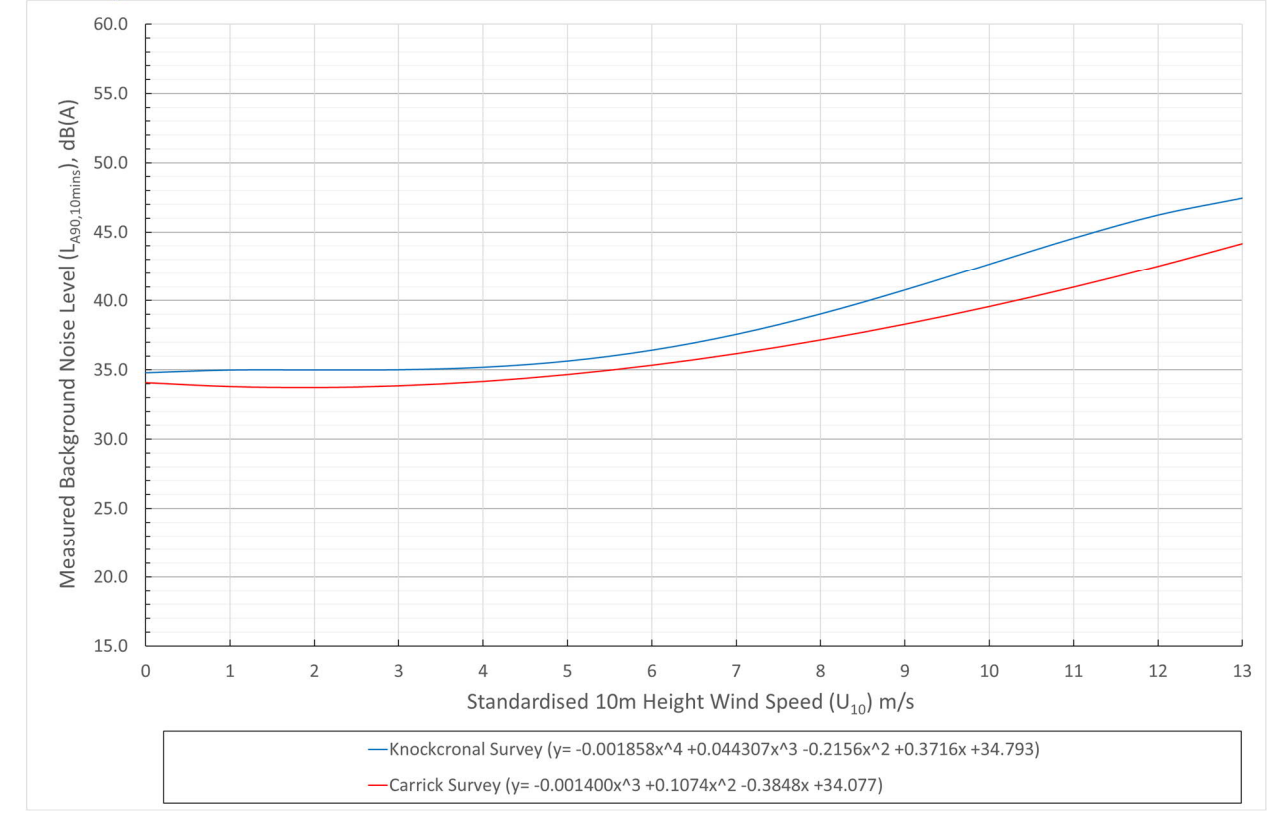
Night-time Hours



Graph 9.5.22 Location: Genoch Cottage – Night-time Background Noise Comparison (dB(A)) Versus Wind Speed (m/s)

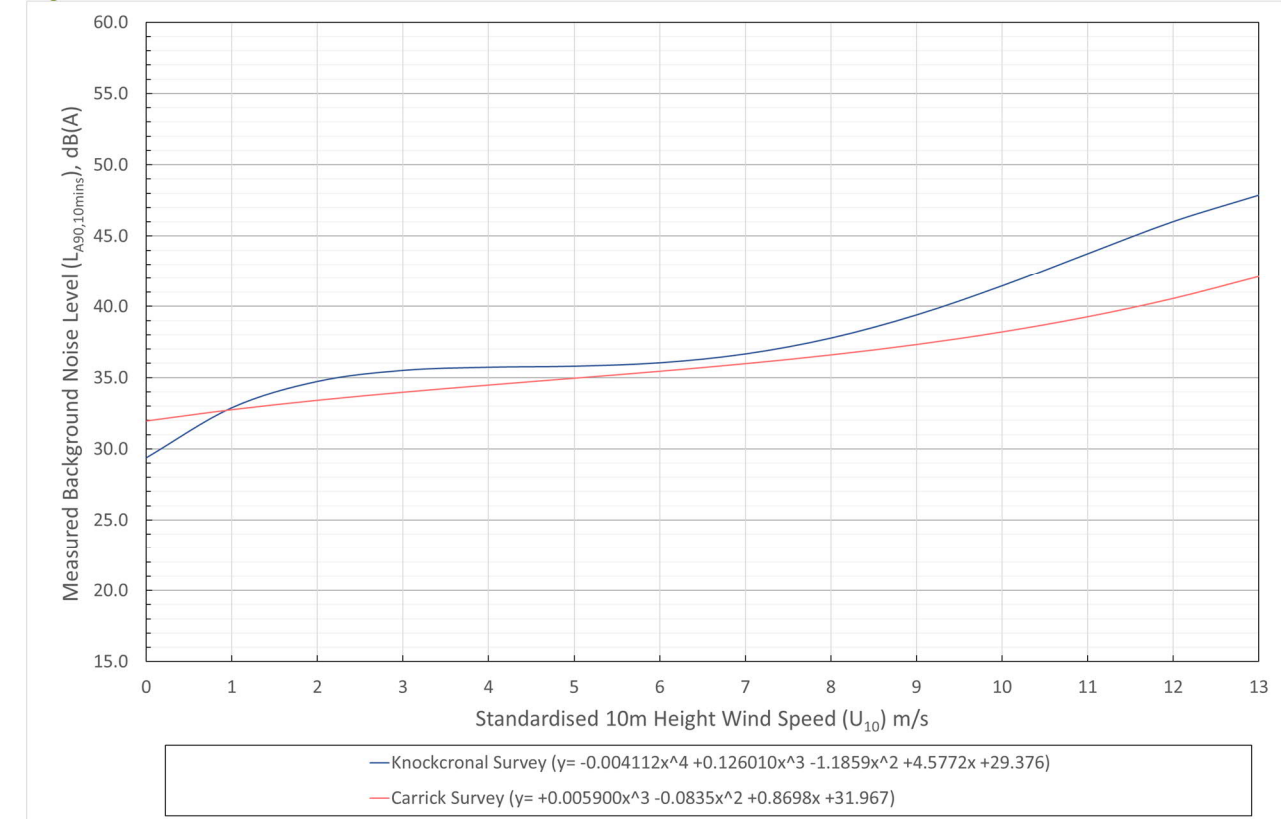
9.3.3 Measurement Location: Tairlaw Toll House

Quiet Daytime Hours



Graph 9.5.23 Location: Tairlaw Toll House – Quiet Daytime Background Noise Comparison (dB(A)) Versus Wind Speed (m/s)

Night-time Hours



Graph 9.5.24 Location: Tairlaw Toll House – Night-time Background Noise Comparison (dB(A)) Versus Wind Speed (m/s)



**Carrick Windfarm Project Team**

ScottishPower Renewables  
9th Floor  
320 St Vincent Street  
Glasgow  
G2 5AD

[carrickwindfarm@scottishpower.com](mailto:carrickwindfarm@scottishpower.com)

