

East Anglia THREE

Chapter 29

Landscape, Seascape and Visual Amenity

Environmental Statement

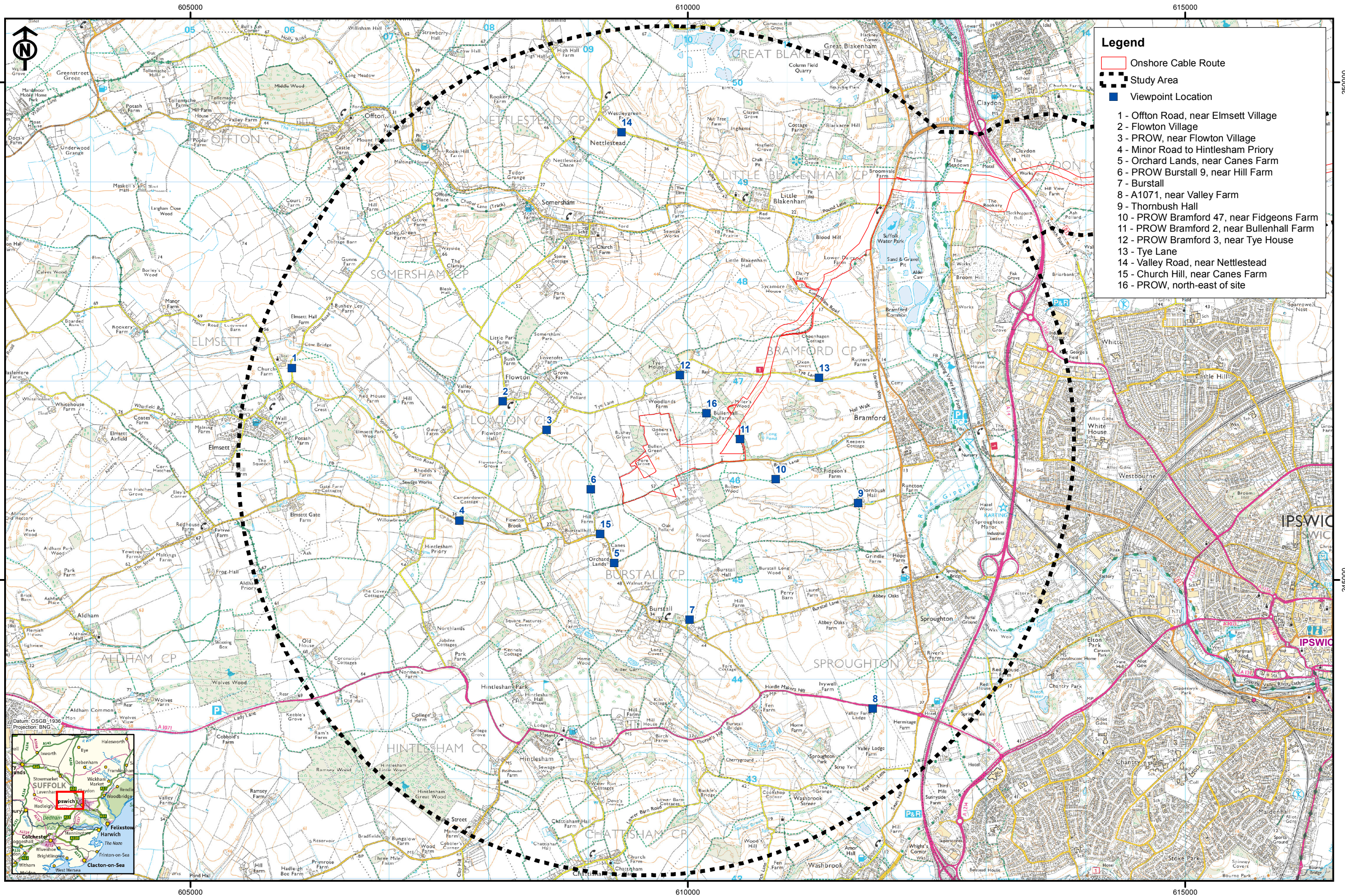
Volume 2

Document Reference – 6.2.29(b)

Author – Open
East Anglia THREE Limited
Date – November 2015
Revision History – Revision A





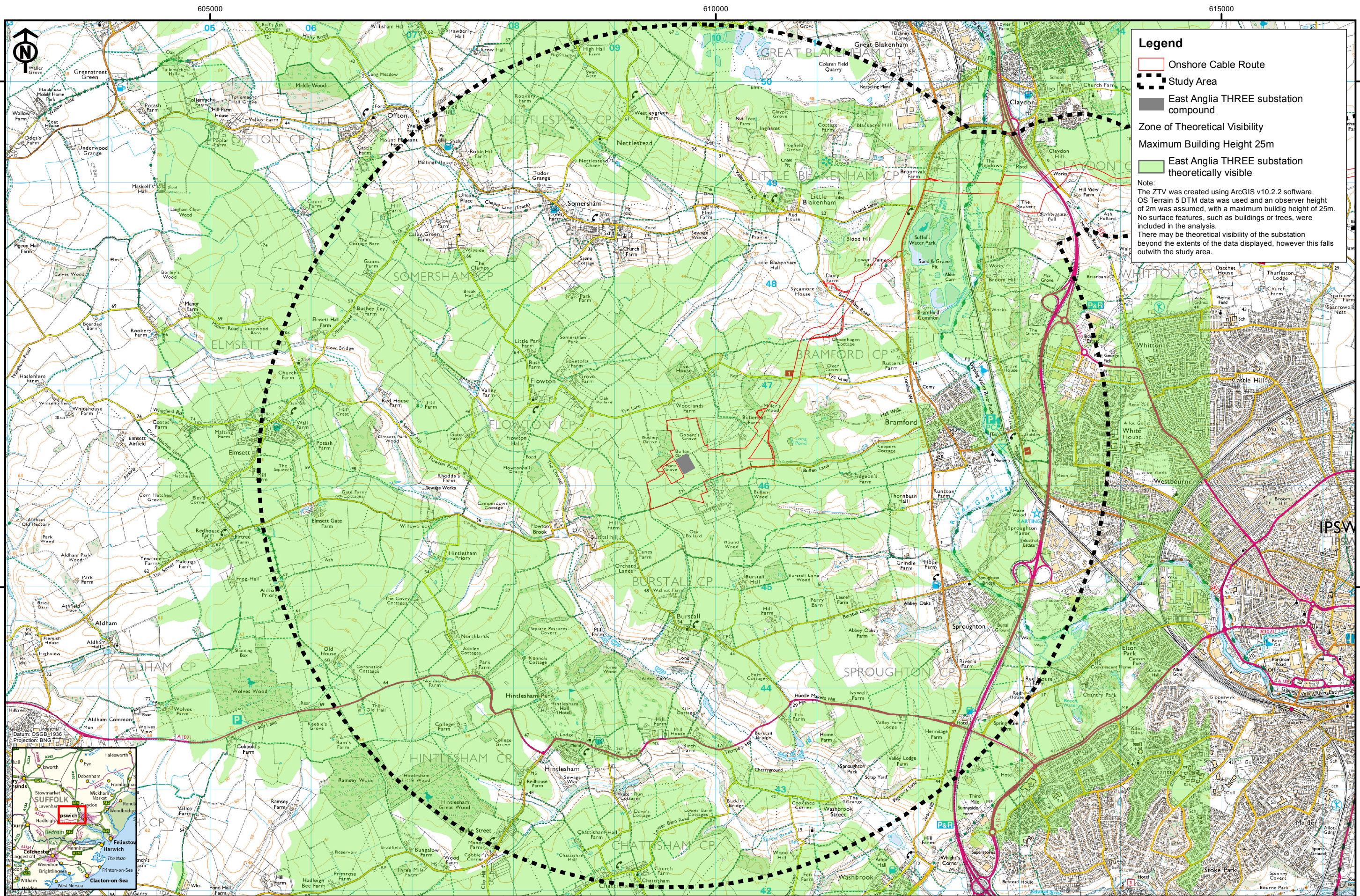
This Page is Intentionally Blank



- Legend**
- Onshore Cable Route
 - Study Area
 - Viewpoint Location
- 1 - Offton Road, near Elmsett Village
 - 2 - Flowton Village
 - 3 - PROW, near Flowton Village
 - 4 - Minor Road to Hintlesham Priory
 - 5 - Orchard Lands, near Canes Farm
 - 6 - PROW Burstall 9, near Hill Farm
 - 7 - Burstall
 - 8 - A1071, near Valley Farm
 - 9 - Thornbush Hall
 - 10 - PROW Bramford 47, near Fidgeons Farm
 - 11 - PROW Bramford 2, near Bullenhall Farm
 - 12 - PROW Bramford 3, near Tye House
 - 13 - Tye Lane
 - 14 - Valley Road, near Nettlestead
 - 15 - Church Hill, near Canes Farm
 - 16 - PROW, north-east of site



				4 30/10/15 LA Final Issue		Original A3 Plot Scale 1:35,000		East Anglia THREE Limited Viewpoint Location	Drg No 6115-525-P610-29.5	
		3 27/07/15 LA Final Draft							Rev 4	Figure 29.5
		2 15/05/14 TR Boundary Revision		© Crown copyright. All rights reserved. 2015 Licence number 0100031673 © East Anglia Offshore Wind Limited 2015		Date 30/10/2015				
						Layout N/A				
Rev Date By Comment										



Legend

Onshore Cable Route

Study Area

East Anglia THREE substation compound

Zone of Theoretical Visibility

Maximum Building Height 25m

East Anglia THREE substation theoretically visible

Note:
The ZTV was created using ArcGIS v10.2.2 software.
OS Terrain 5 DTM data was used and an observer height of 2m was assumed, with a maximum building height of 25m.
No surface features, such as buildings or trees, were included in the analysis.
There may be theoretical visibility of the substation beyond the extents of the data displayed, however this falls outwith the study area.



4	30/10/15	LA	Final Issue
3	27/07/15	LA	Final Draft
2	15/05/14	TR	Boundary Revision
Rev	Date	By	Comment

Original A3 Plot Scale 1:35,000

0

0.5

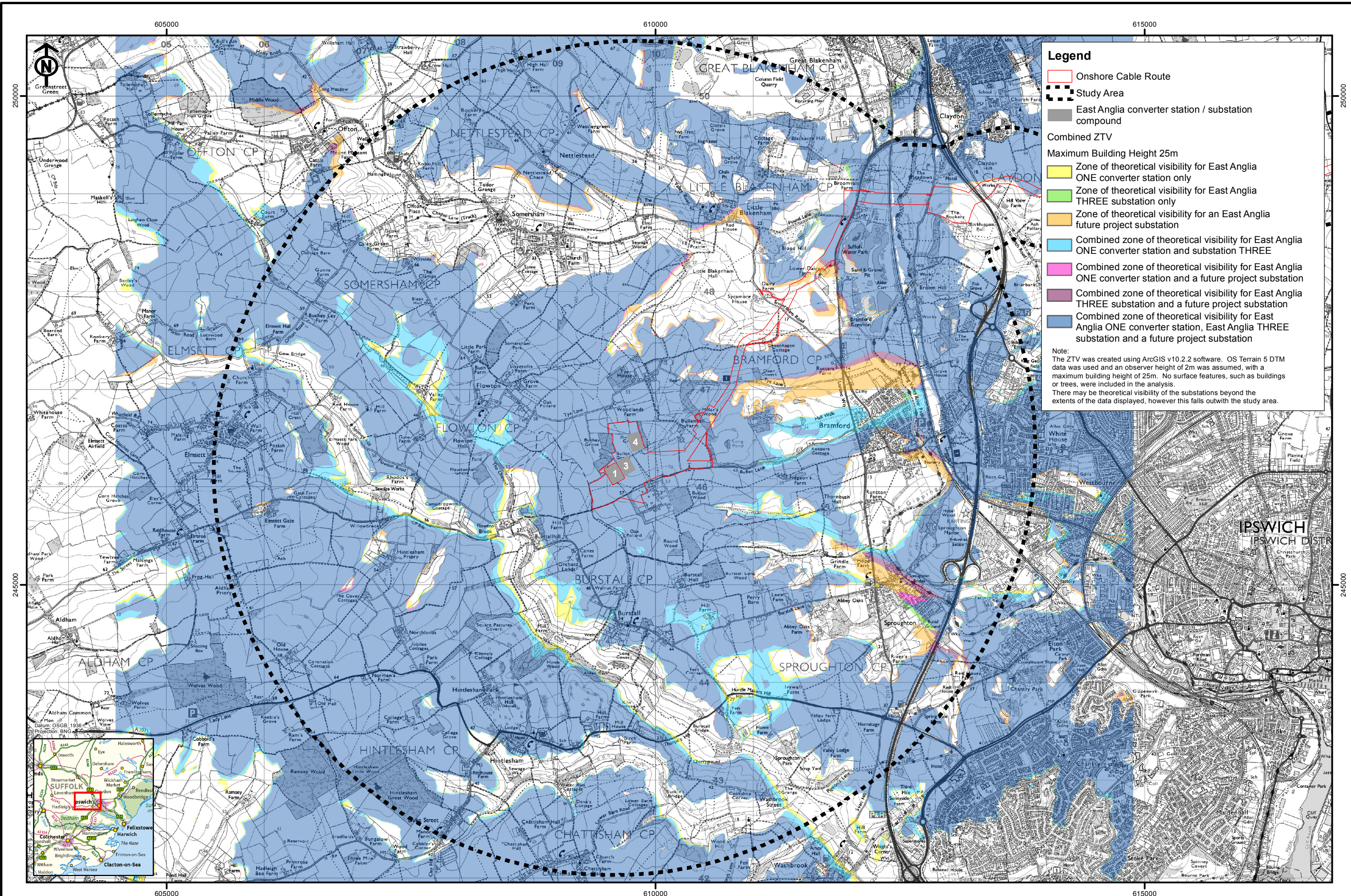
1 km

East Anglia THREE Limited

Zone of Theoretical Visibility

Drg No	6115-525-P610-29.6
Rev	4
Date	30/10/2015
Layout	N/A
Figure	29.6

P:\2013\130568_EAOW3&4\GIS\ArcMap\LVIA\130568_EAOW_LVIA_Fig29.6_EAOW3_ZTV.mxd



Legend

- Onshore Cable Route
- Study Area
- East Anglia converter station / substation compound

Combined ZTV

Maximum Building Height 25m

- Zone of theoretical visibility for East Anglia ONE converter station only
- Zone of theoretical visibility for East Anglia THREE substation only
- Zone of theoretical visibility for an East Anglia future project substation
- Combined zone of theoretical visibility for East Anglia ONE converter station and substation THREE
- Combined zone of theoretical visibility for East Anglia ONE converter station and a future project substation
- Combined zone of theoretical visibility for East Anglia THREE substation and a future project substation
- Combined zone of theoretical visibility for East Anglia ONE converter station, East Anglia THREE substation and a future project substation

Note:
The ZTV was created using ArcGIS v10.2.2 software. OS Terrain 5 DTM data was used and an observer height of 2m was assumed, with a maximum building height of 25m. No surface features, such as buildings or trees, were included in the analysis. There may be theoretical visibility of the substations beyond the extents of the data displayed, however this falls outwith the study area.

Chapter 29(b) Figures End Here