

East Anglia THREE

Chapter 10

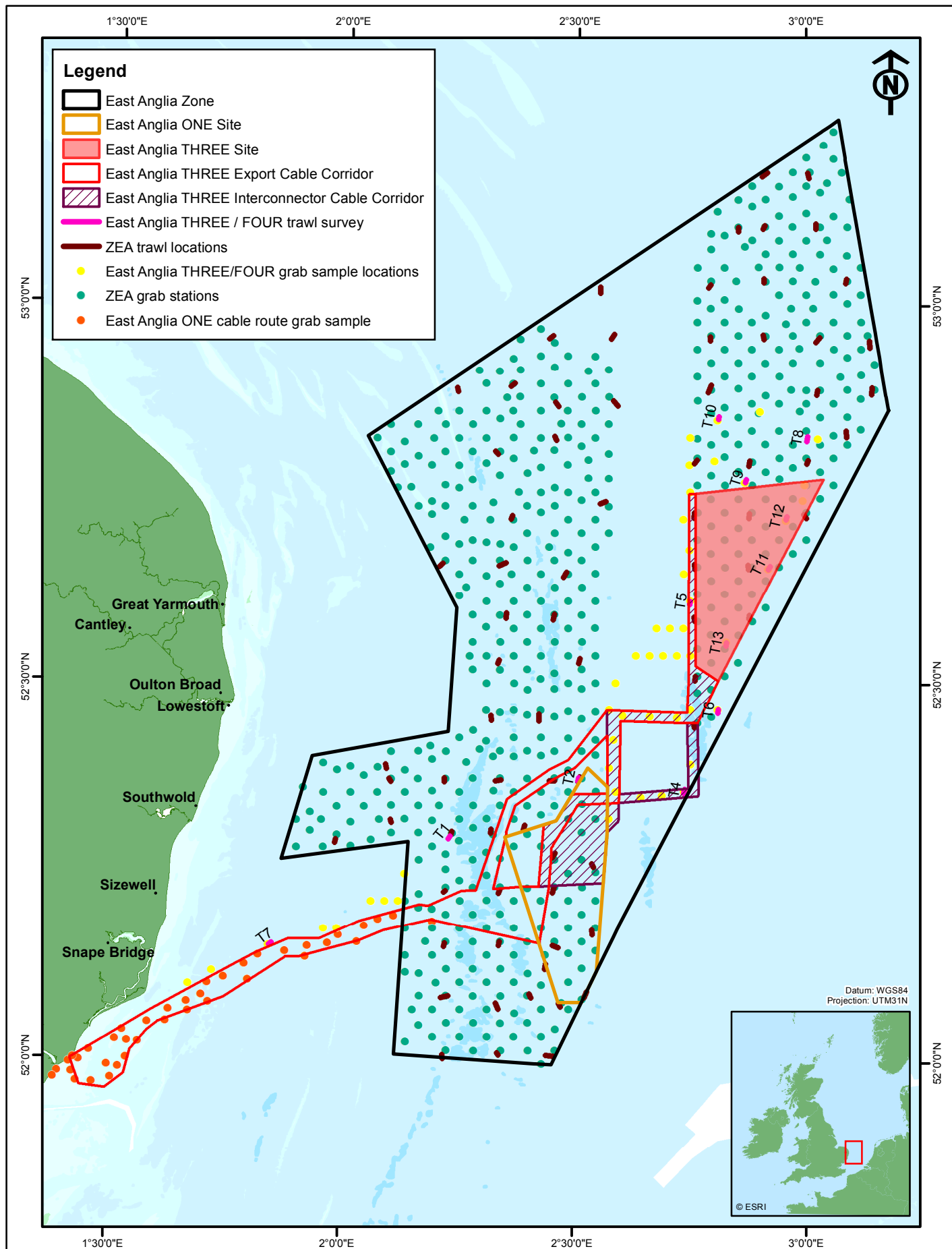
Benthic Ecology Figures



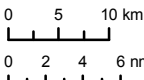
Environmental Statement
Volume 2
Document Reference – 6.2.10

Author – Royal HaskoningDHV
East Anglia THREE Limited
Date – November 2015
Revision History – Revision A

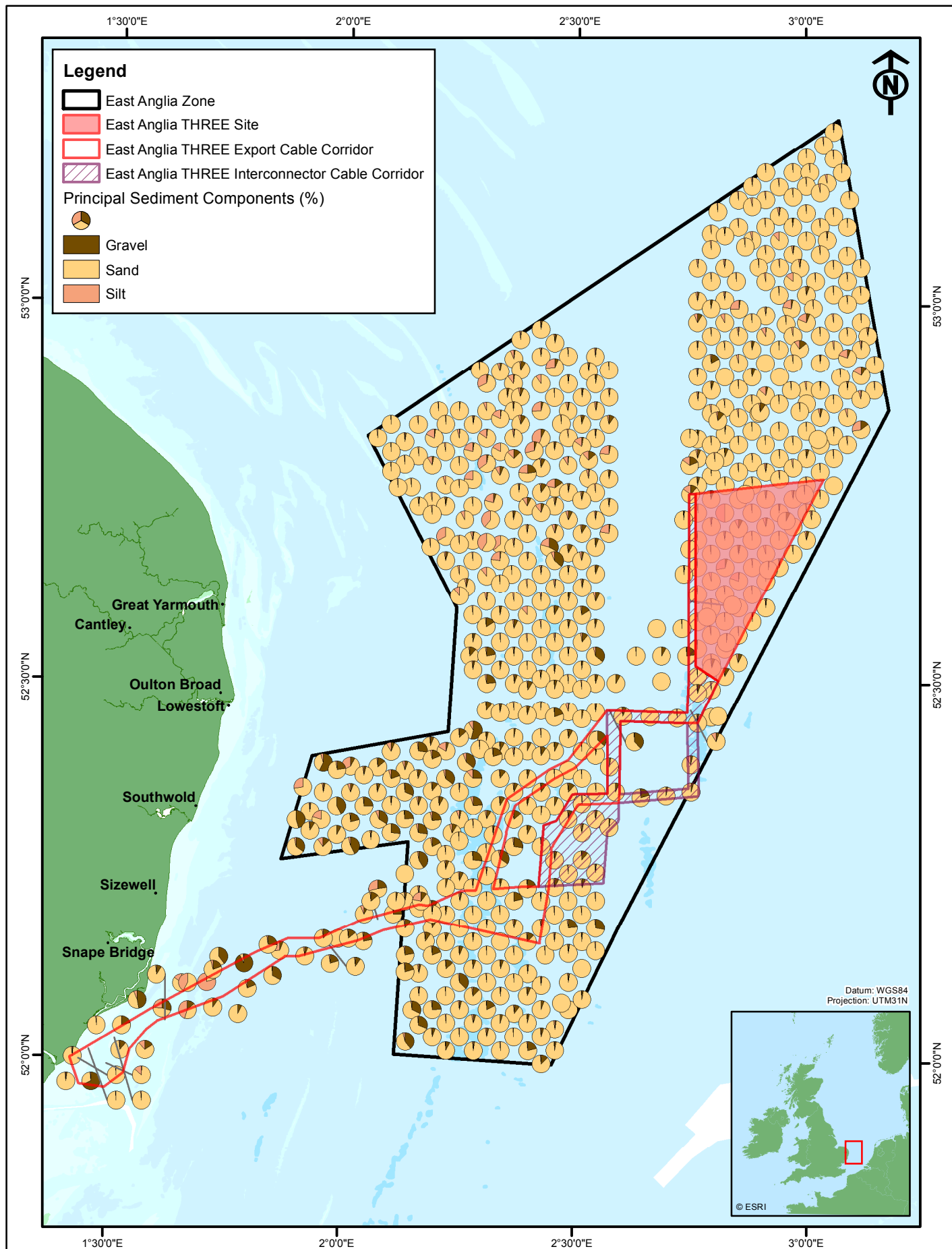



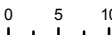
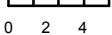
This Page is Intentionally Blank



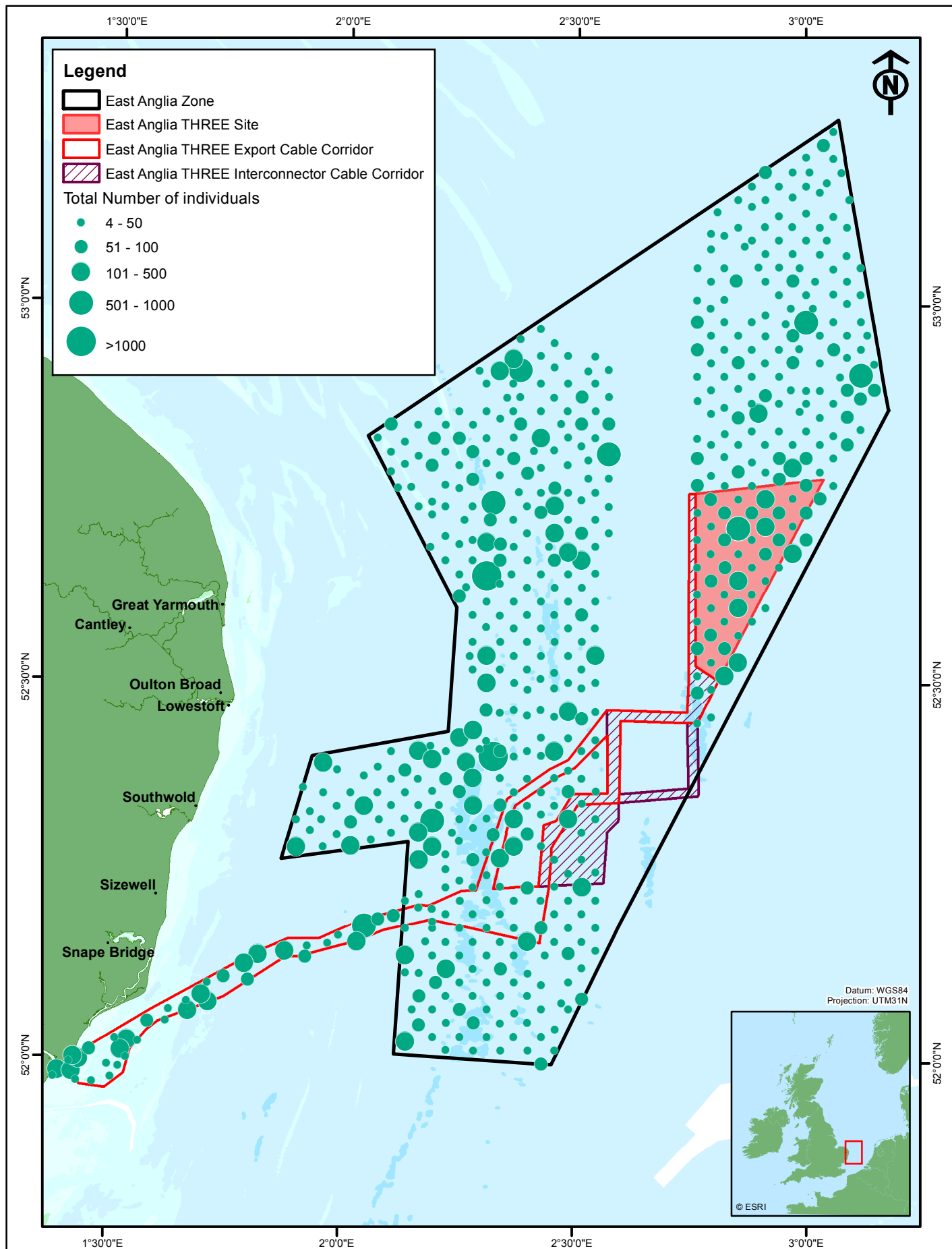
VATTENFALL  				Contains Ordnance Survey data © Crown Copyright and database right 2015. © East Anglia Offshore Wind Limited 2015. © British Crown and SeaZone Solutions Limited. All rights reserved. Products Licence No. 082010.001.		East Anglia THREE Limited Benthic ecology study areas and sample locations			
2	21/10/15	AB	Second Issue.	Original A4 Plot Scale 1:750,000		Volume 2		Figure 10.1	
1	24/06/15	BPN	First Issue.			Layout	Date	Rev	Dwg No.
Rev	Date	By	Comment			N/A	21/10/2015	2	EA3-O-046



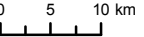
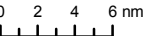
Ref:



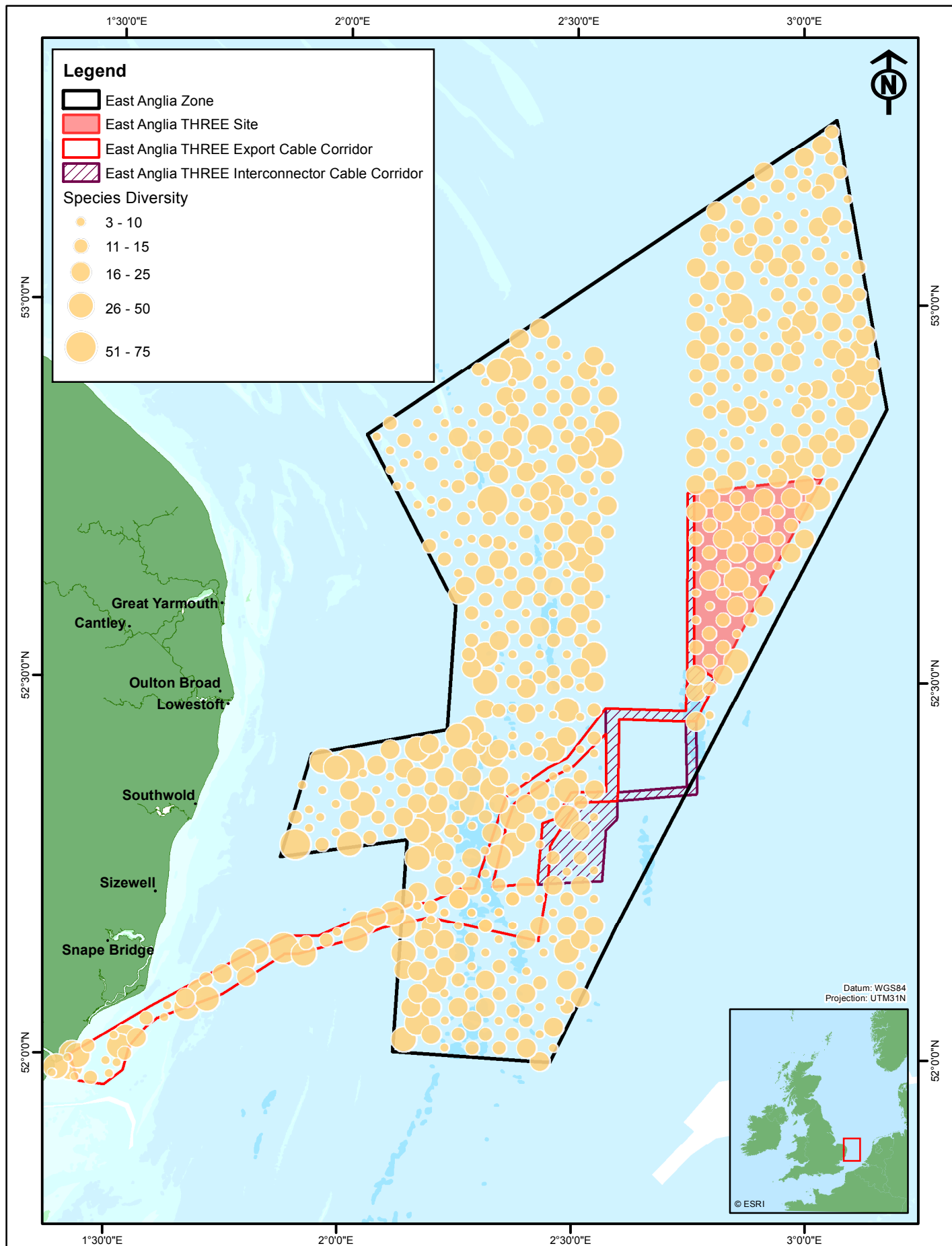
VATTENFALL 				Contains Ordnance Survey data © Crown Copyright and database right 2015. © East Anglia Offshore Wind Limited 2015. © British Crown and SeaZone Solutions Limited. All rights reserved. Products Licence No. 082010.001.				East Anglia THREE Limited Sediment distribution			
2	21/10/15	AB	Second Issue	Original A4 Plot Scale 1:750,000	 	Volume 2		Figure 10.2			
1	24/06/15	BPN	First Issue			Layout	Date	Rev	Dwg No.		
Rev	Date	By	Comment			N/A	21/10/2015	2	EA3-O-047		



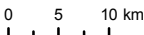
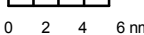
Ref:



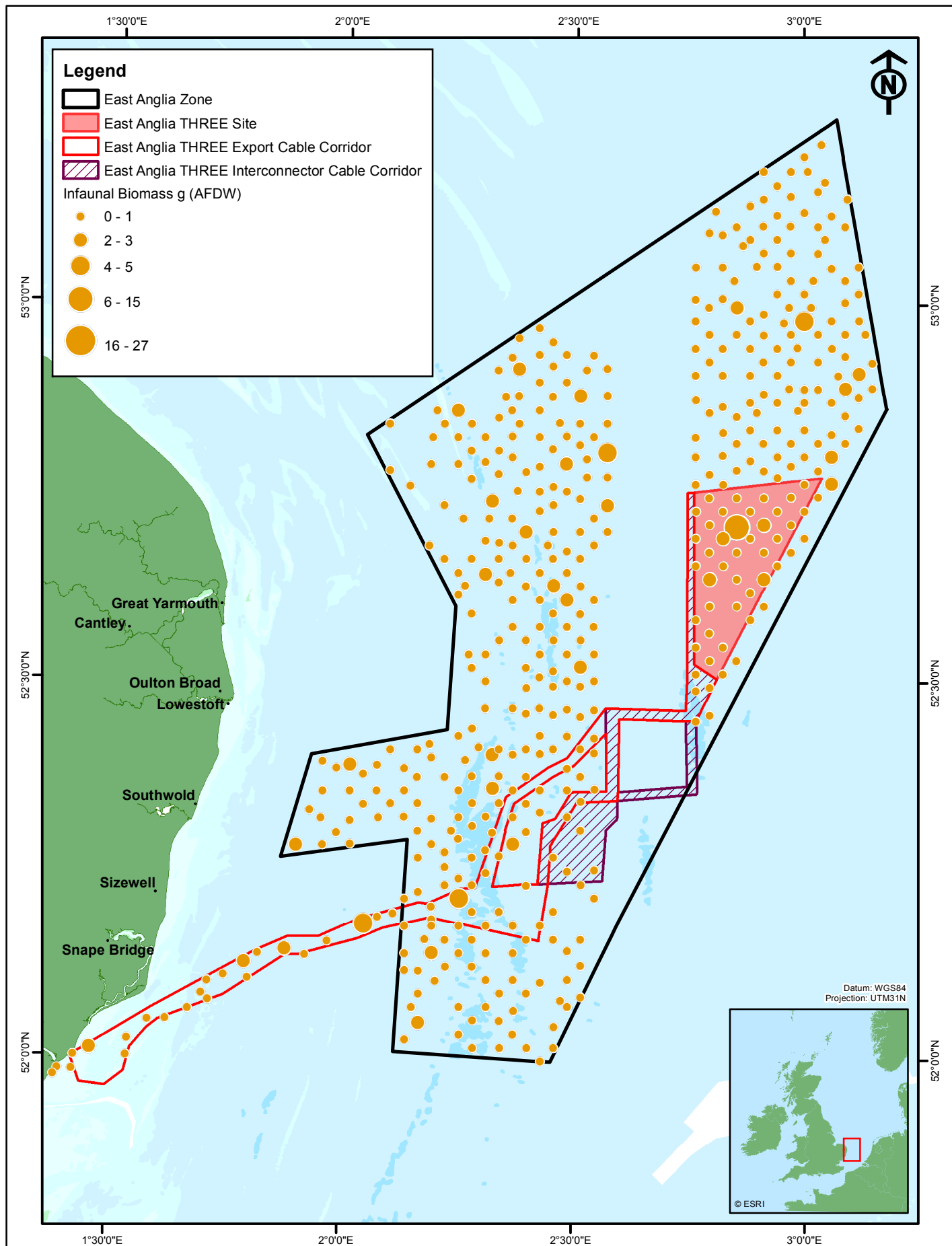
VATTENFALL  				Contains Ordnance Survey data © Crown Copyright and database right 2015. © East Anglia Offshore Wind Limited 2015. © British Crown and SeaZone Solutions Limited. All rights reserved. Products Licence No. 082010.001. Benthic grab samples derived from the following sources: cable corridor, MESL, May 2013. East Anglia Zone, Fugro, May 2013.		East Anglia THREE Limited Infaunal abundance			
2	21/10/15	AB	Second Issue.	Original A4 Plot Scale 1:750,000	 	Volume 2		Figure 10.3	
1	24/06/15	BPN	First Issue.			Layout	Date	Rev	Dwg No.
Rev	Date	By	Comment			N/A	21/10/2015	2	EA3-O-048



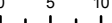

Ref:



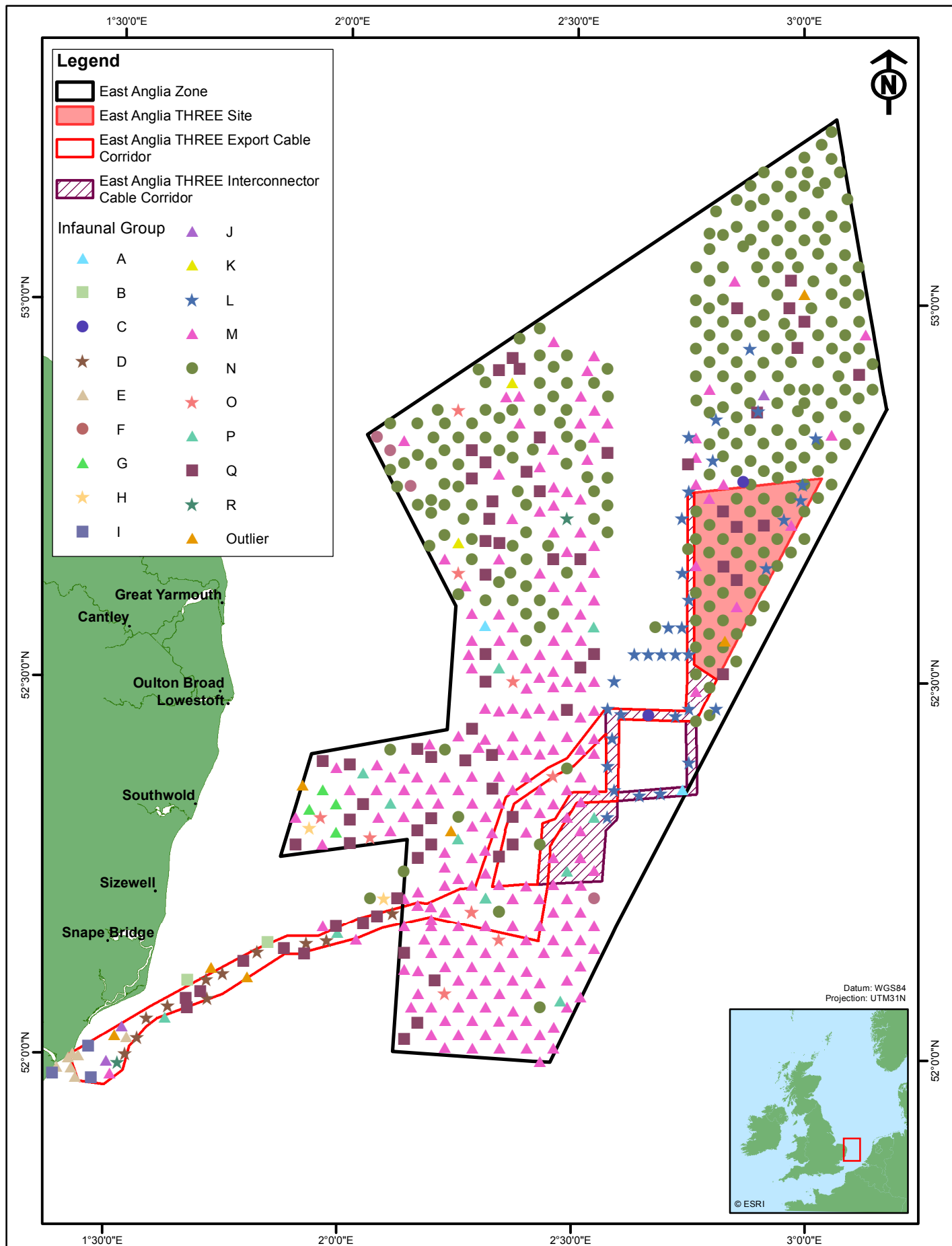
VATTENFALL  				Contains Ordnance Survey data © Crown Copyright and database right 2015. © East Anglia Offshore Wind Limited 2015. © British Crown and SeaZone Solutions Limited. All rights reserved. Products Licence No. 082010.001. Benthic grab samples derived from the following sources: MESL, May 2013. Fugro, May 2013				East Anglia THREE Limited Infaunal diversity			
2	21/10/15	AB	Second Issue.	Original A4 Plot Scale 1:750,000	 	Volume 2		Figure 10.4			
1	24/06/15	BPN	First Issue.			Layout	Date	Rev	Dwg No.		
Rev	Date	By	Comment			N/A	21/10/2015	2	EA3-O-049		



Ref:



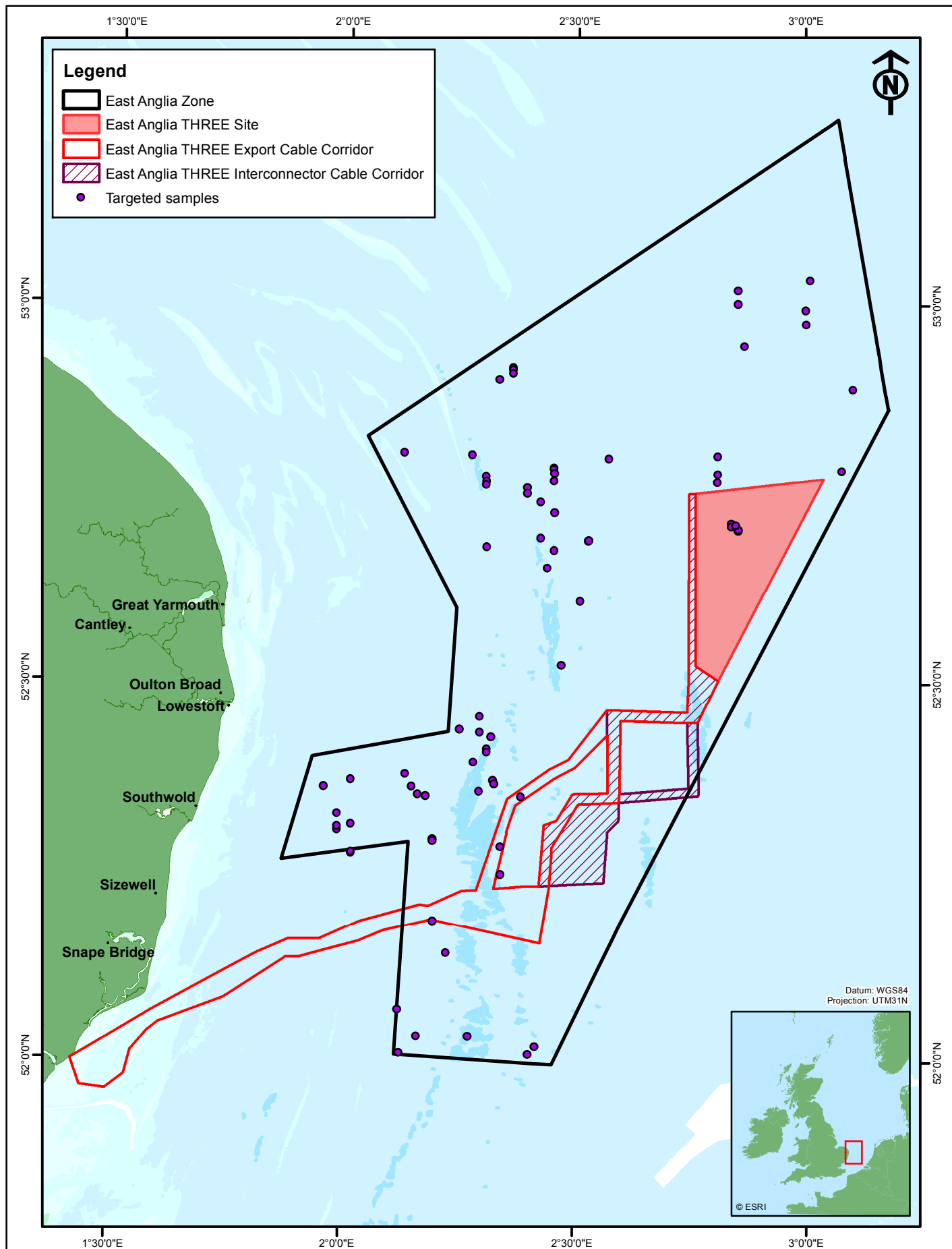
VATTENFALL  				Contains Ordnance Survey data © Crown Copyright and database right 2015. © East Anglia Offshore Wind Limited 2015. © British Crown and SeaZone Solutions Limited. All rights reserved. Products Licence No. 082010.001. Benthic grab samples derived from the following sources: MESL, May 2013. Fugro, May 2013.				East Anglia THREE Limited Infaunal biomass			
2	22/10/15	AB	Second Issue.	Original A4 Plot Scale 1:750,000	0 5 10 km 		Volume 2		Figure 10.5		
1	25/06/15	BPN	First Issue.		0 2 4 6 nm 		Layout	Date	Rev	Dwg No.	
Rev	Date	By	Comment				N/A	22/10/2015	2	EA3-O-050	





Ref:



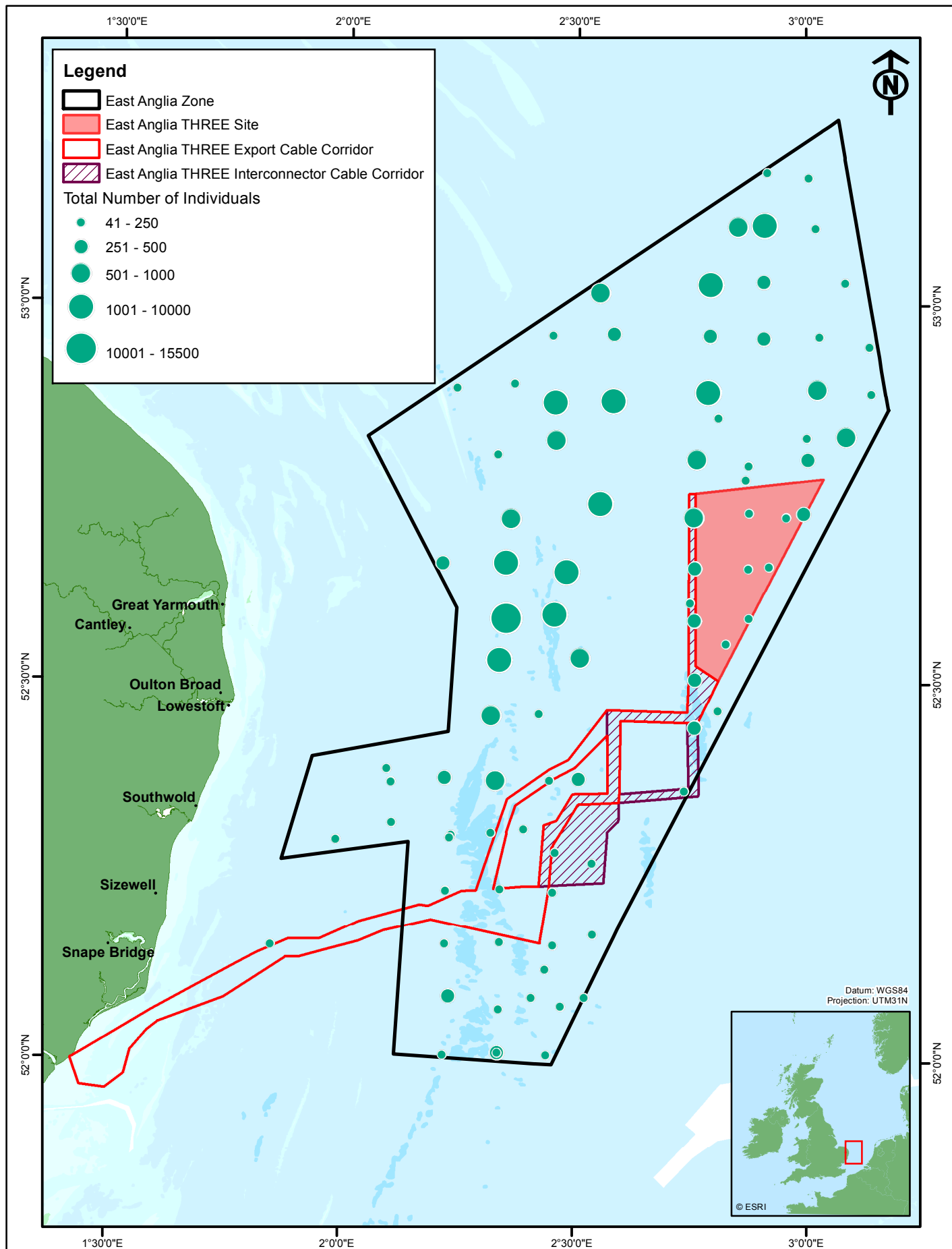
<div><div><div>VATTENFALL</div><div></div></div><div><div></div><div>SCOTTISHPOWER RENEWABLES</div></div></div>				<div>Contains Ordnance Survey data © Crown Copyright and database right 2015. © East Anglia Offshore Wind Limited 2015. Benthic grab samples derived from the following sources: MESL, May 2013. Fugro, May 2013.</div>		<div>East Anglia THREE Limited</div> <div>Infaunal groups</div>						
				<div>Original A4 Plot Scale 1:750,000</div> <div><div><div>0510</div><div>km</div></div><div><div>0246</div><div>nm</div></div></div>	<div>Volume 2</div>		<div>Figure 10.6</div>					
2	22/10/15	AB	Second Issue.		<div>Layout</div>		<div>Date</div>		<div>Rev</div>		<div>Dwg No.</div>	
1	24/06/15	BPN	First Issue.		<div>N/A</div>		<div>22/10/2015</div>		<div>2</div>		<div>EA3-O-051</div>	
Rev	Date	By	Comment									


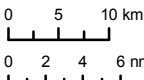
Ref:



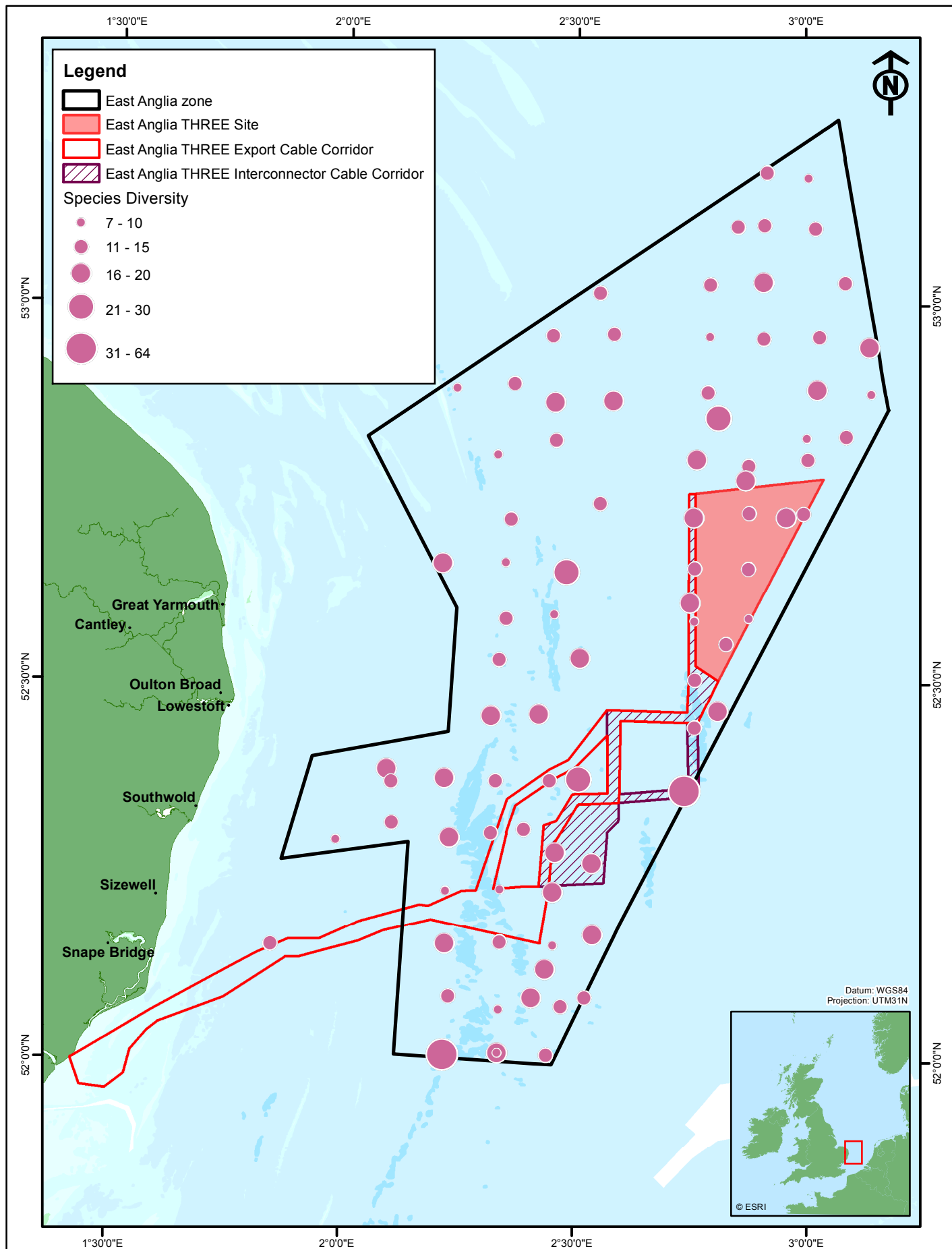
<div><div><div>VATTENFALL</div><div></div></div><div><div></div><div>SCOTTISHPOWER RENEWABLES</div></div></div>				<div>Contains Ordnance Survey data © Crown Copyright and database right 2015. © East Anglia Offshore Wind Limited 2015. © British Crown and SeaZone Solutions Limited. All rights reserved. Products Licence No. 082010.001. Benthic data derived from MESL: November, 2010.</div>		<div>East Anglia THREE Limited</div> <div>Infaunal targeted samples</div>						
				<div>Original A4 Plot Scale 1:750,000</div> <div><div><div>0510 km</div><div></div></div><div><div>0246 nm</div><div></div></div></div>	<div>Volume 2</div>		<div>Figure 10.7</div>					
2	22/10/15	AB	Second Issue.		<div>Layout</div>		<div>Date</div>		<div>Rev</div>		<div>Dwg No.</div>	
1	24/06/15	BPN	First Issue.		<div>N/A</div>		<div>22/10/2015</div>		<div>2</div>		<div>EA3-O-052</div>	
Rev	Date	By	Comment									



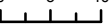

Ref:



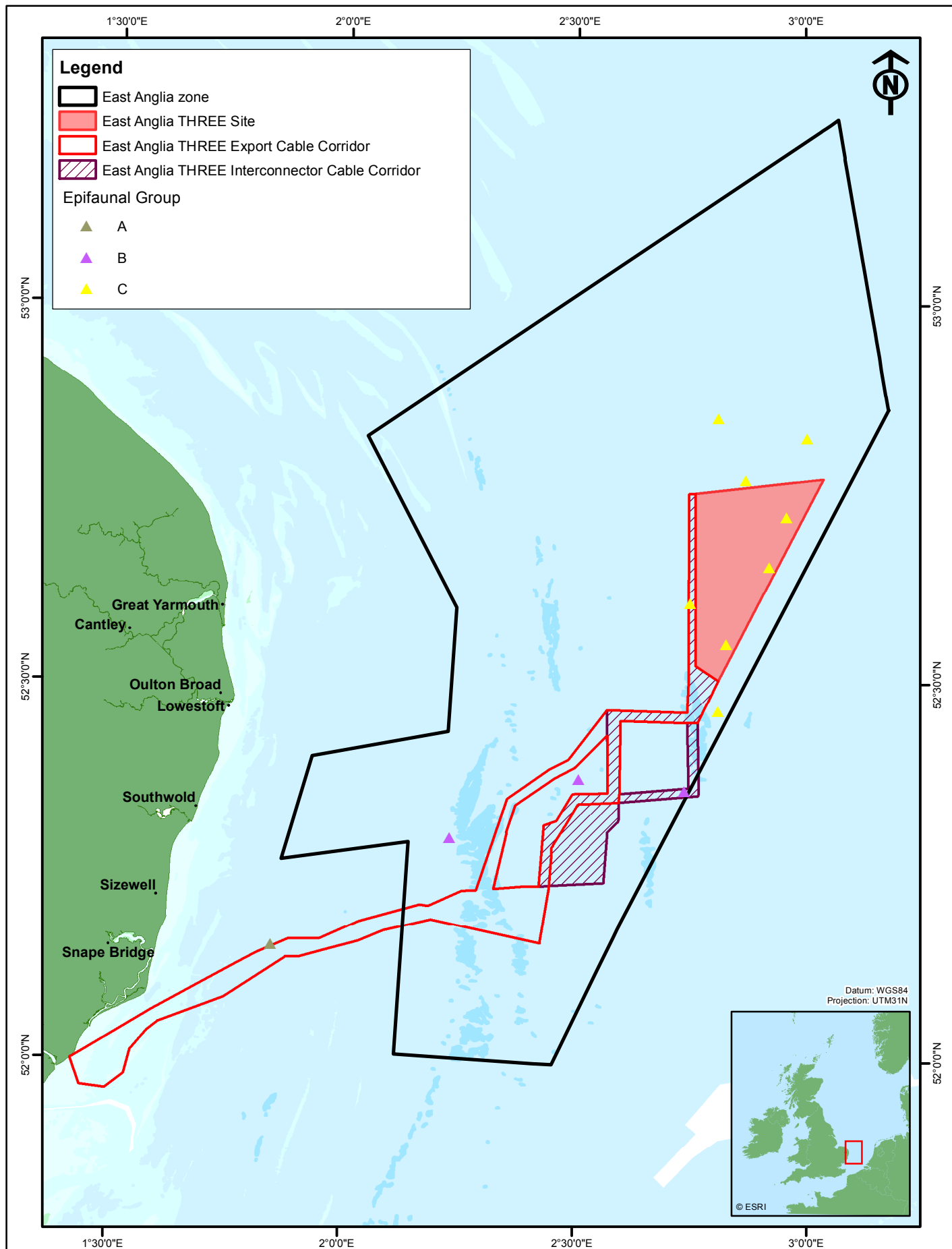
VATTENFALL 				<small>Contains Ordnance Survey data © Crown Copyright and database right 2015. © East Anglia Offshore Wind Limited 2015. © British Crown and SeaZone Solutions Limited. All rights reserved. Products Licence No. 082010.001. Data derived from MESL benthic trawl samples: January 2012.</small>		East Anglia THREE Limited Epifaunal abundance			
2	22/10/15	AB	Second Issue.	Original A4 Plot Scale 1:750,000		Volume 2		Figure 10.8	
1	25/06/15	BPN	First Issue.			Layout	Date	Rev	Dwg No.
Rev	Date	By	Comment			N/A	22/10/2015	2	EA3-O-053



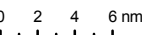
Ref:



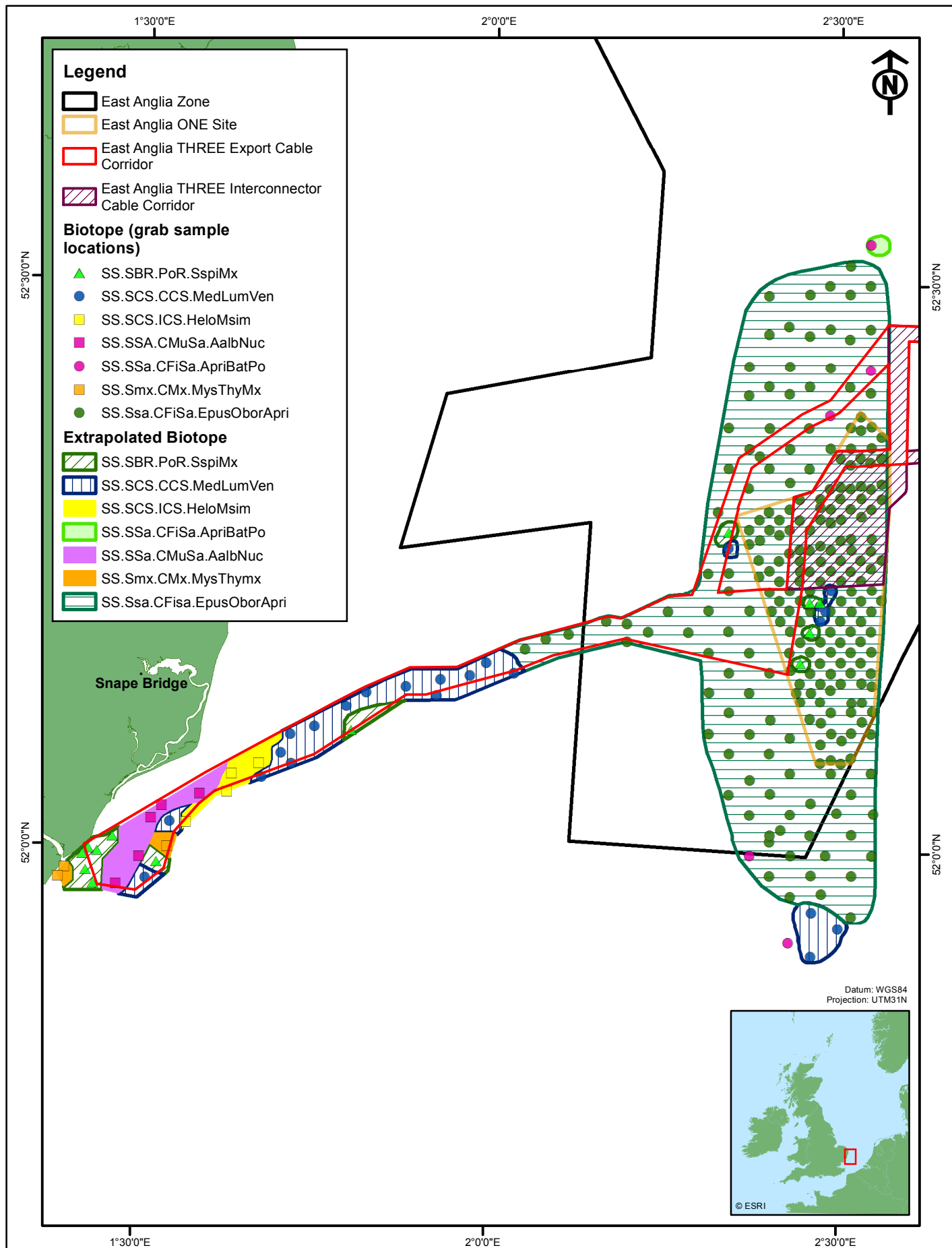
VATTENFALL  				Contains Ordnance Survey data © Crown Copyright and database right 2015. © East Anglia Offshore Wind Limited 2015. © British Crown and SeaZone Solutions Limited. All rights reserved. Products Licence No. 082010.001. Data derived from MIESL benthic trawl samples: January 2012.				East Anglia THREE Limited Epifaunal diversity			
2	22/10/15	AB	Second Issue.	Original A4 Plot Scale 1:750,000	0 5 10 km 		Volume 2		Figure 10.9		
1	25/06/15	BPN	First Issue.		0 2 4 6 nm 		Layout	Date	Rev	Dwg No.	
Rev	Date	By	Comment				N/A	22/10/2015	2	EA3-O-054	

Ref:



VATTENFALL 				<small>Contains Ordnance Survey data © Crown Copyright and database right 2015. © East Anglia Offshore Wind Limited 2015. © British Crown and SeaZone Solutions Limited. All rights reserved. Products Licence No. 082010.001. Data derived from MESL benthic trawl samples: January 2012</small>		East Anglia THREE Limited Epifaunal groups			
2	22/10/15	AB	Second Issue.	Original A4 Plot Scale 1:750,000	 	Volume 2		Figure 10.10	
1	25/06/15	BPN	First Issue.			Layout	Date	Rev	Dwg No.
Rev	Date	By	Comment			N/A	22/10/2015	2	EA3-O-055

Ref:



Data reproduced from MESL, 2012.
Contains Ordnance Survey data © Crown
Copyright and database right 2015.
© East Anglia Offshore Wind Limited 2015.
Biotope data derived from MESL, 2012. East Anglia ONE
Limited, 2012.

East Anglia THREE Limited

East Anglia One Infaunal Communities and Habitats

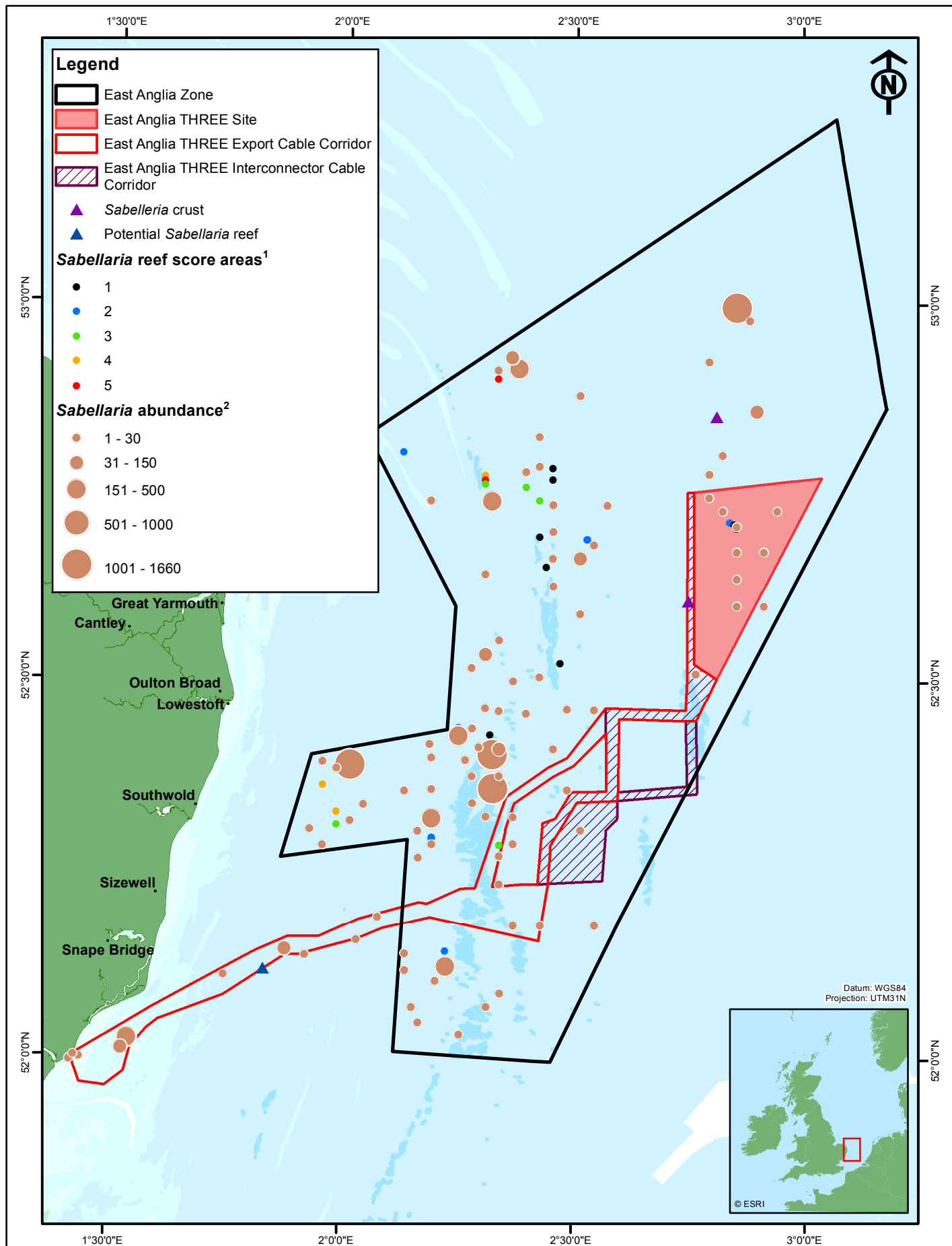
Rev	Date	By	Comment
2	22/10/15	AB	Second Issue.
1	25/06/15	BPN	First Issue.



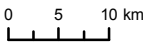
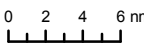
Original
A4
Plot Scale
1:500,000

0 2 4 km
0 1 2 3 nm

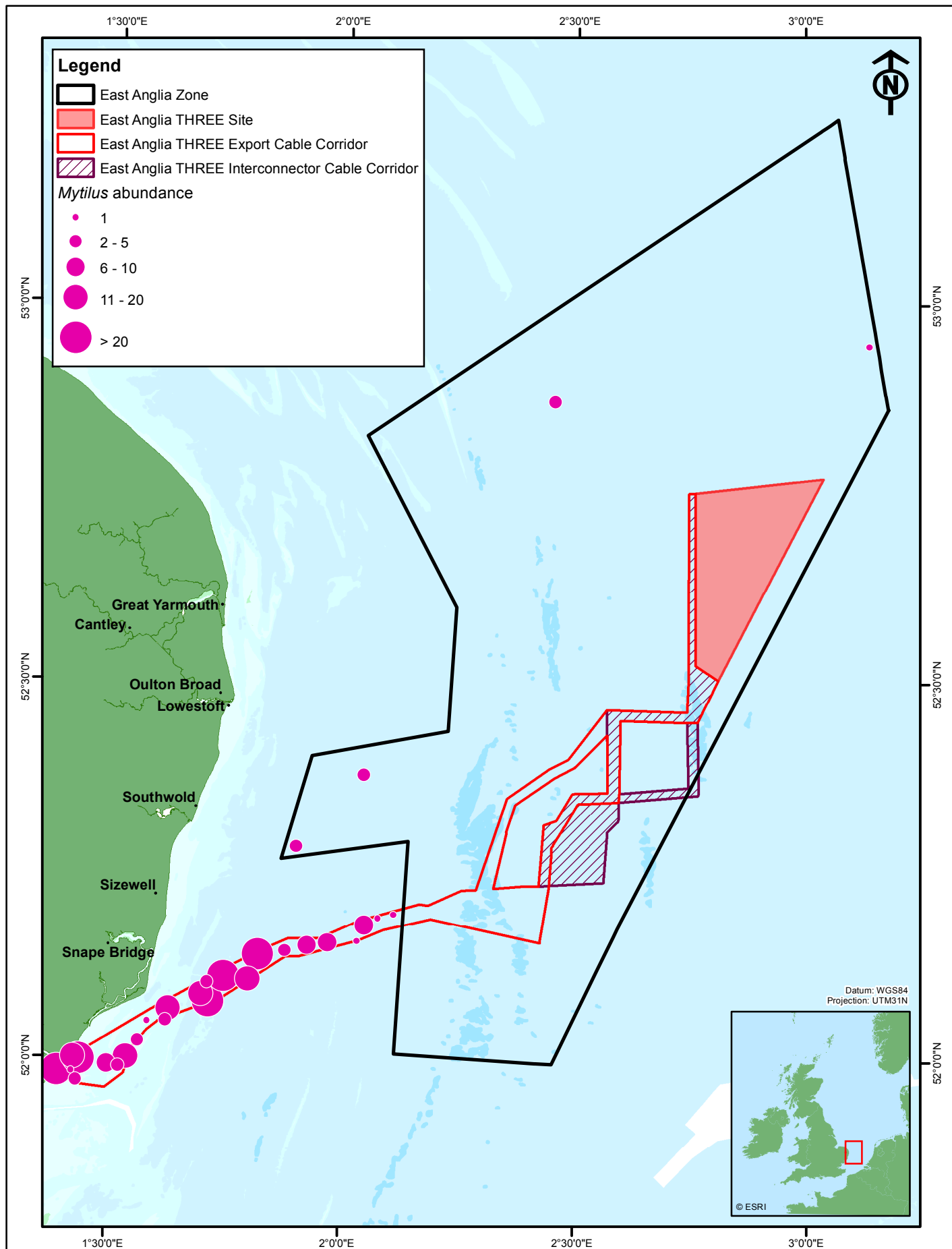
Volume 2		Figure 10.11	
Layout	Date	Rev	Dwg No.
N/A	22/10/2015	2	EA3-O-056


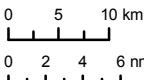
Ref:



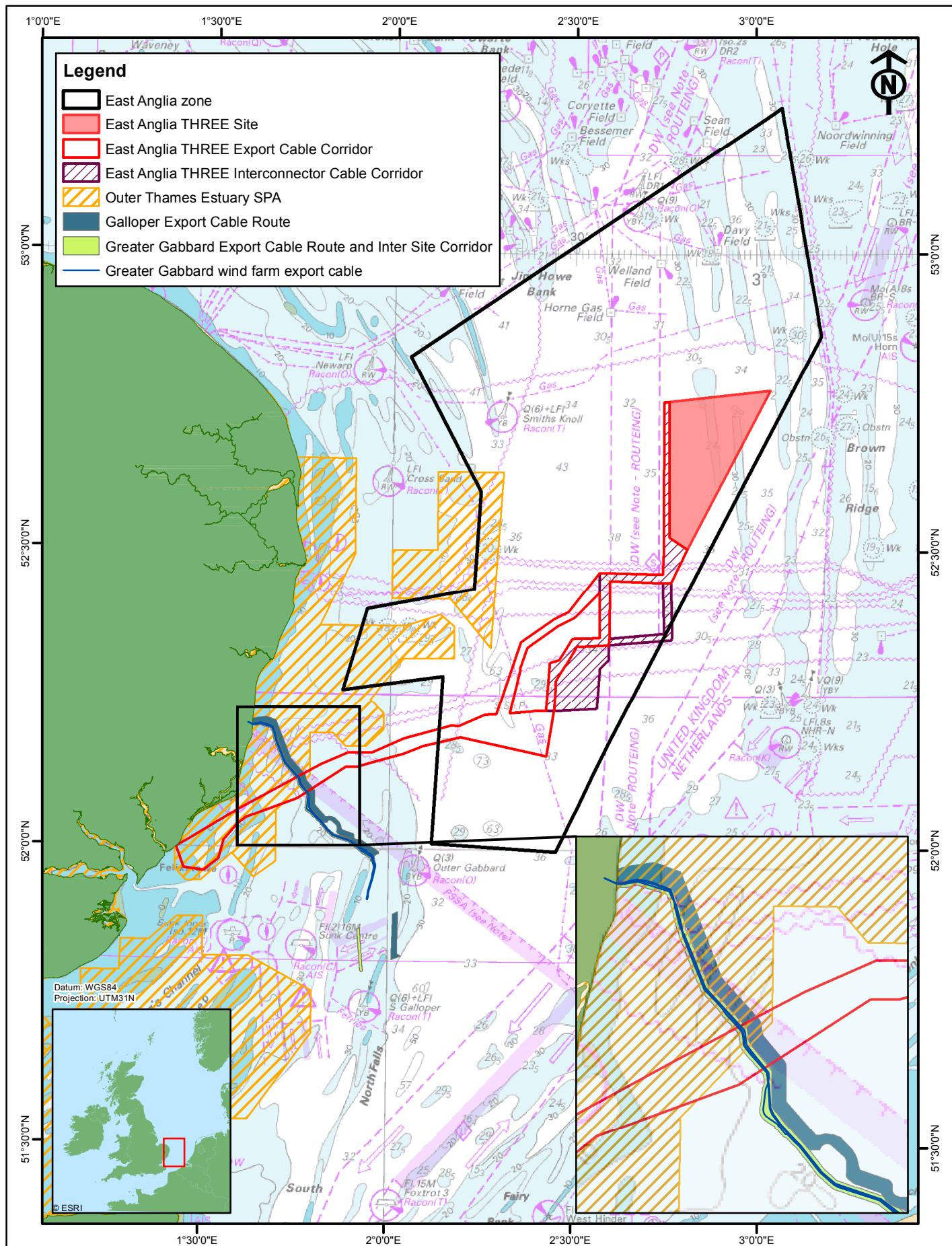
VATTENFALL  				Contains Ordnance Survey data © Crown Copyright and database right 2015. © East Anglia Offshore Wind Limited 2015. © British Crown and SeaZone Solutions Limited. All rights reserved. Products Licence No. 082010.001. 1: data derived from benthic grab samples, MESL, 2012 2: data derived from benthic grab samples, MESL, 2012, and Fugro, 2013.				East Anglia THREE Limited <i>Sabellaria spinulosa</i> abundance and potential reef			
2	22/10/15	AB	Second Issue.	Original A4 Plot Scale 1:750,000	 	Volume 2		Figure 10.12			
1	26/06/15	BPN	First Issue.			Layout	Date	Rev	Dwg No.		
Rev	Date	By	Comment			N/A	22/10/2015	2	EA3-O-057		



Ref:



VATTENFALL 				<small>Contains Ordnance Survey data © Crown Copyright and database right 2015. © East Anglia Offshore Wind Limited 2015. © British Crown and SeaZone Solutions Limited. All rights reserved. Products Licence No. 082010.001. Data derived from trawl surveys from MESL 2012, and Fugro, 2013</small>		East Anglia THREE Limited <i>Mytilus abundance</i>			
2	22/10/15	AB	Second Issue.	Original A4 Plot Scale 1:750,000		Volume 2		Figure 10.13	
1	25/06/15	BPN	First Issue.			Layout	Date	Rev	Dwg No.
Rev	Date	By	Comment			N/A	22/10/2015	2	EA3-O-058

Ref:



VATTENFALL 			
			
2	22/10/15	AB	Second Issue.
1	25/06/15	BPN	First Issue.
Rev	Date	By	Comment

Contains Ordnance Survey data © Crown Copyright and database right 2015.
© East Anglia Offshore Wind Limited 2015.
© British Crown and SeaZone Solutions Limited.
This product has been derived in part from material obtained from the UK Hydrographic Office with the permission of the Controller of Her Majesty's Stationery Office and the UK Hydrographic Office (www.ukho.gov.uk).
NOT TO BE USED FOR NAVIGATION.

Original A4
Plot Scale 1:950,000

0 5 10 15 km
0 2 4 6 8 nm

East Anglia THREE Limited

Predicted cable crossing area and SPA

Volume 2		Figure 10.14	
Layout	Date	Rev	Dwg No.
N/A	22/10/2015	2	EA3-O-059

Chapter 10 Figures End Here