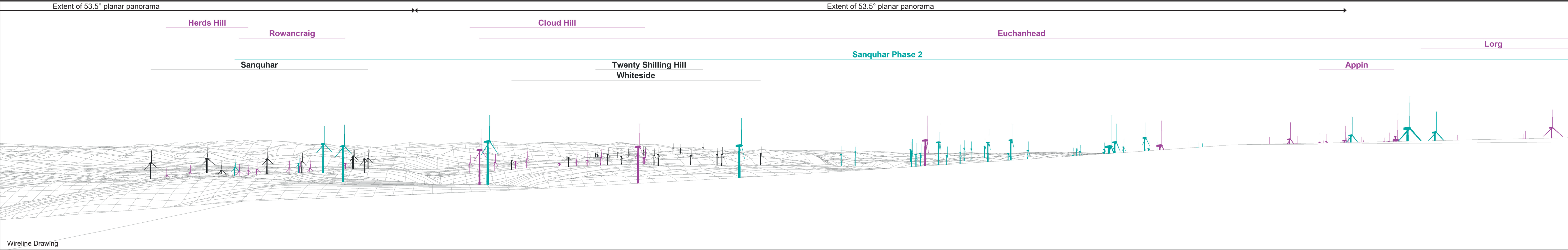




Baseline Photograph

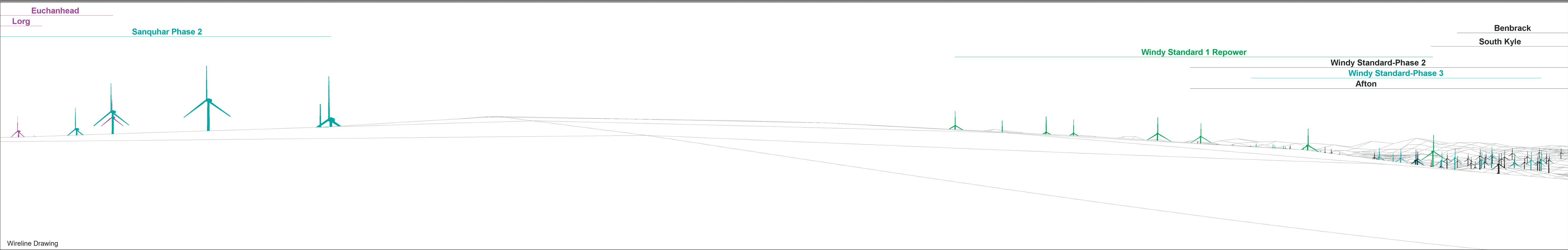
This image provides landscape and visual context only



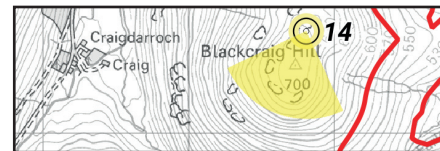


Baseline Photograph

This image provides landscape and visual context only



Wireline Drawing



0cm 1 2 3 4 5
5cm guide for printing and viewing

- Proposal
- Consented
- Application
- Existing
- Construction
- Scoping

OS Reference: 264809 606692
Eye Level: 689.11m AOD
Direction of View: 200°
Distance to Development: 1214 m

Horizontal field of view: 90° (cylindrical projection)
Principal Distance: 522mm
Paper Size: 841 x 297 mm
Correct printed image size: 820 x 130 mm

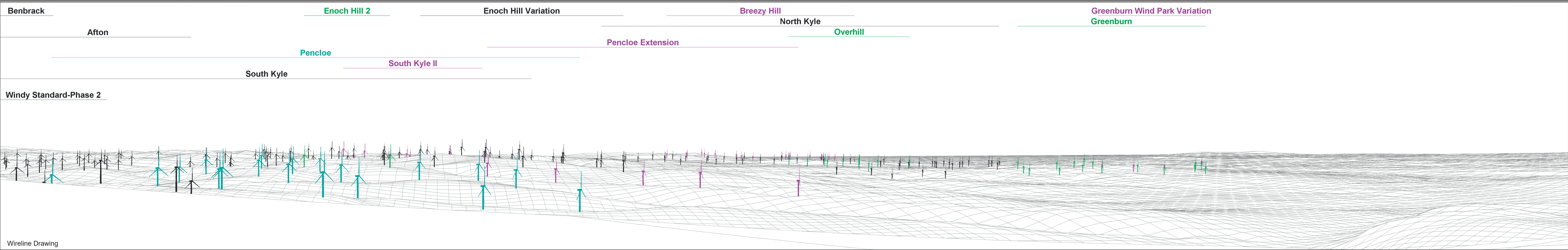
Camera: NIKON D610
Lens: 50mm
Camera Height: 1.5m AGL
Date and Time: 20/11/2024 13:10

Figure: 6.24c
Viewpoint 14: Blackcraig Hill Cairn

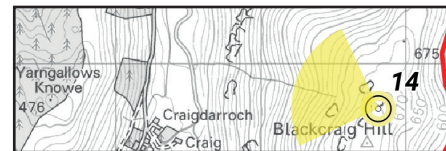


Baseline Photograph

This image provides landscape and visual context only



Wireline Drawing



0cm 1 2 3 4 5
5cm guide for printing and viewing

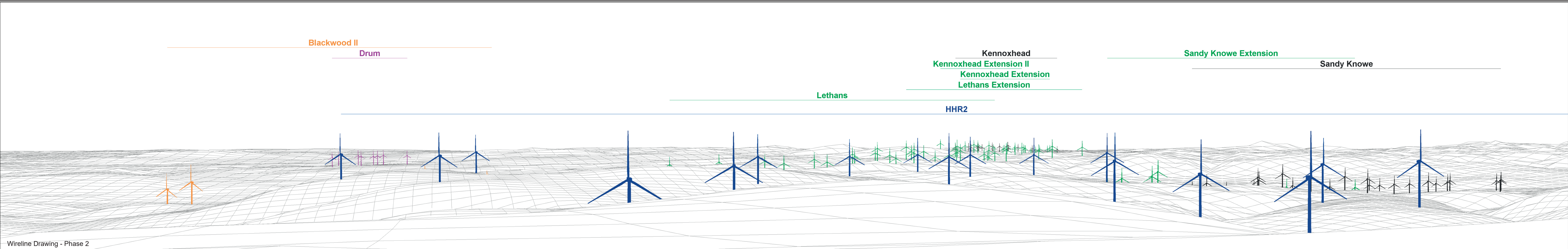
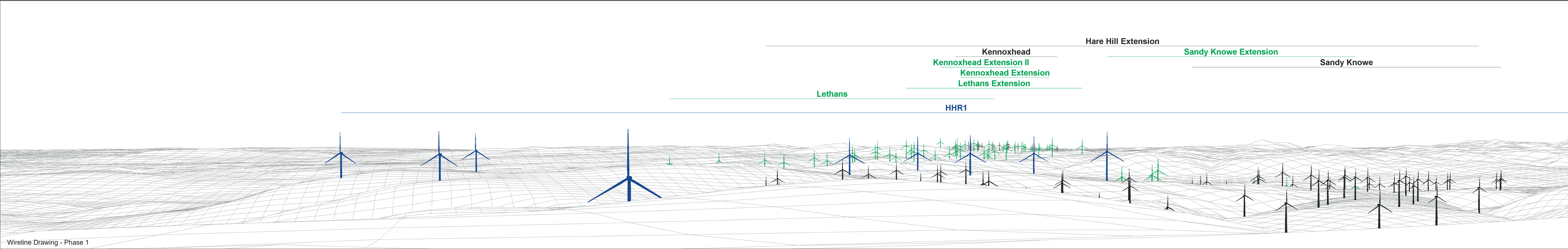
- Proposal
- Consented
- Application
- Existing
- Construction
- Scoping

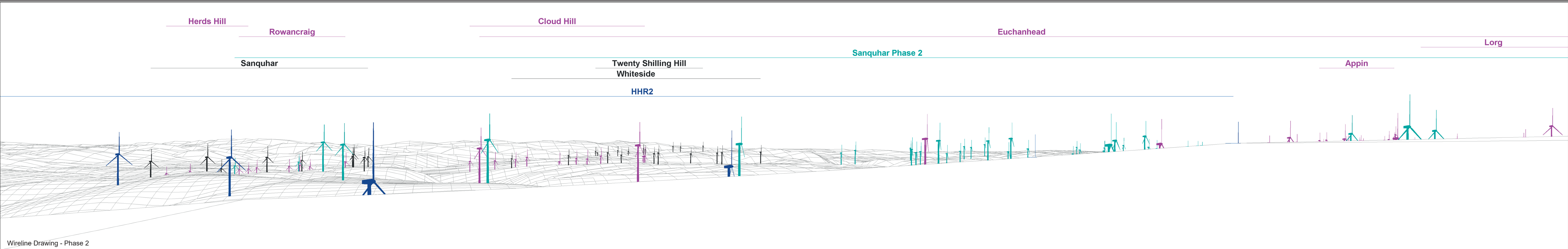
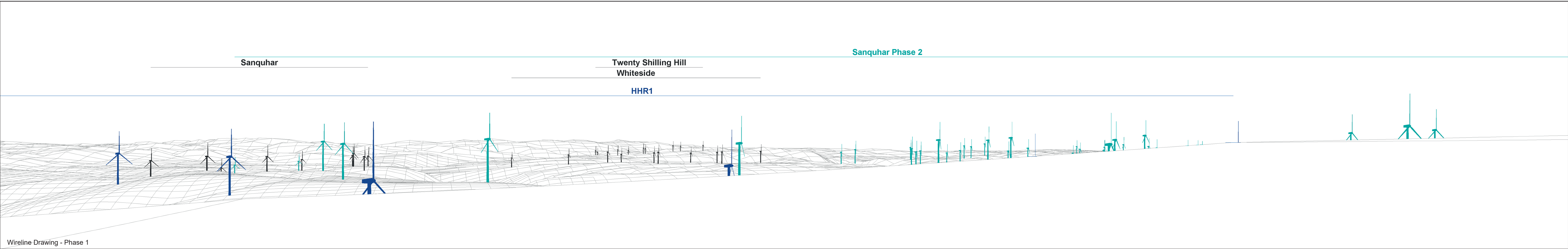
OS Reference: 264809 606692
Eye Level: 689.11m AOD
Direction of View: 290°
Distance to Development: 1214 m

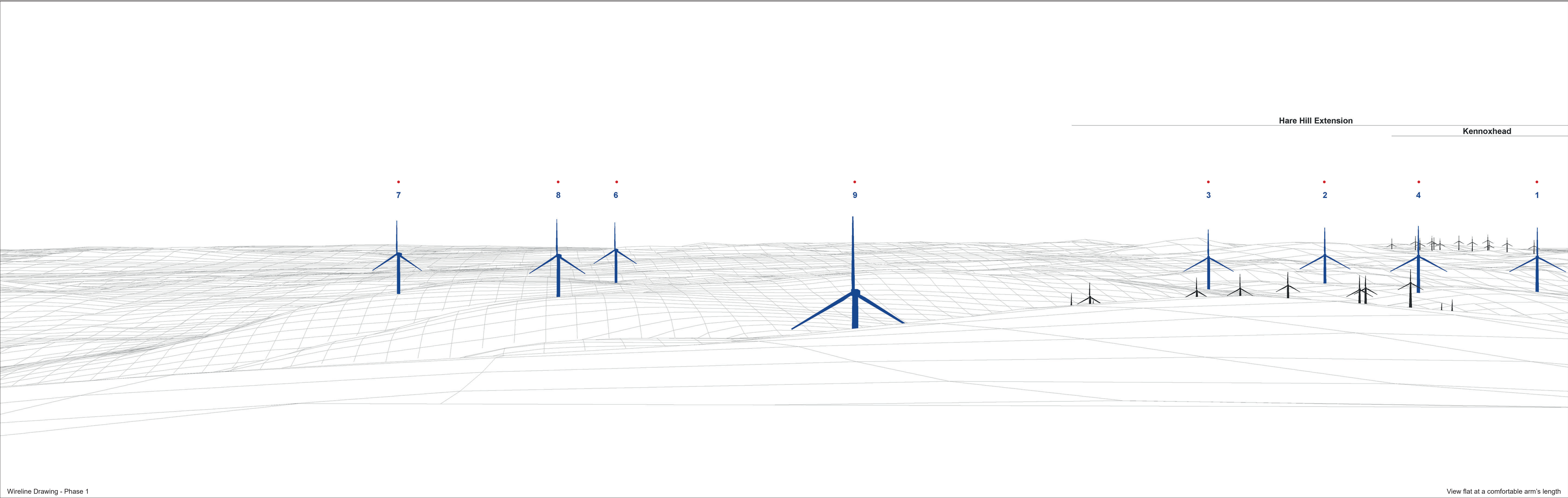
Horizontal field of view: 90° (cylindrical projection)
Principal Distance: 522mm
Paper Size: 841 x 297 mm
Correct printed image size: 820 x 130 mm

Camera: NIKON D610
Lens: 50mm
Camera Height: 1.5m AGL
Date and Time: 20/11/2024 13:10

Figure: 6.24d
Viewpoint 14: Blackcraig Hill Cairn



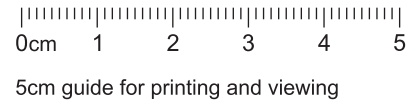
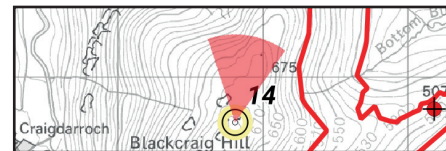






Photomontage - Phase 1

View flat at a comfortable arm's length

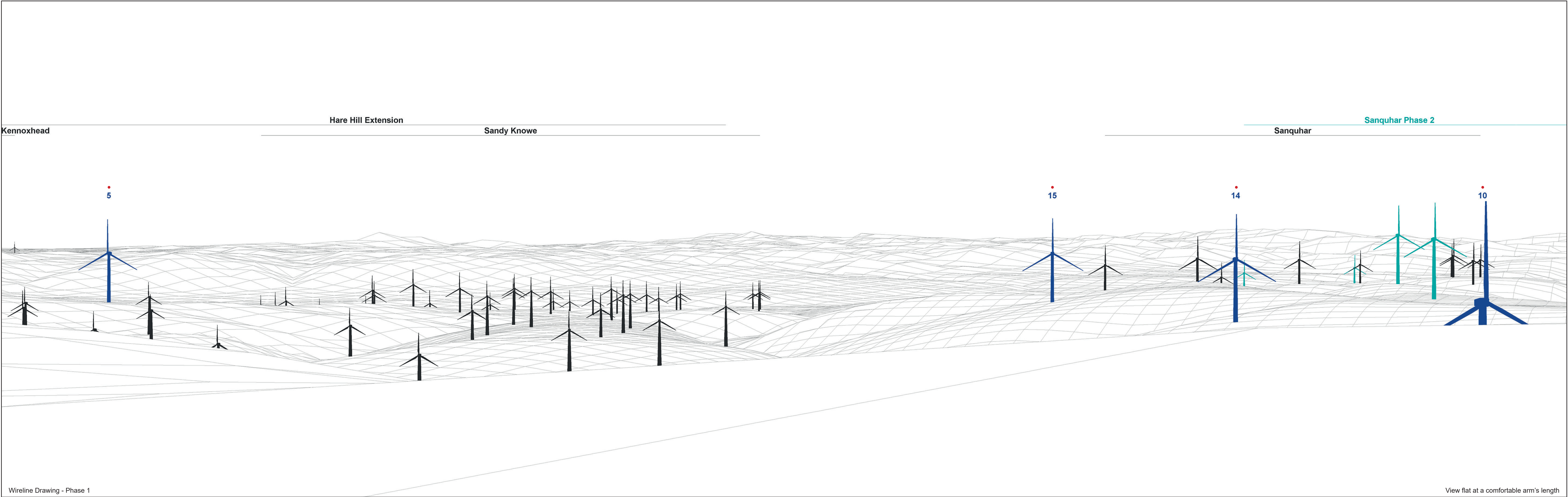


OS Reference:	264809 606692
Eye Level:	689.11m AOD
Direction of View:	8.5°
Distance to Development:	1214 m

Horizontal field of view:	53.5° (planar projection)
Principal Distance:	812.5mm
Paper Size:	841 x 297 mm
Correct printed image size:	820 x 260 mm

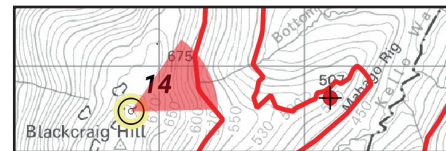
Camera:	NIKON D610
Lens:	50mm
Camera Height:	1.5m AGL
Date and Time:	20/11/2024 13:10

Figure: 6.24h
Viewpoint 14: Blackcraig Hill Cairn



Wireline Drawing - Phase 1

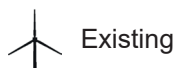
View flat at a comfortable arm's length



• Aviation Light



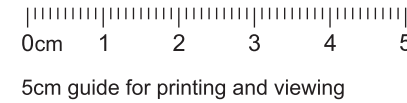
Proposal



Existing



Construction



OS Reference: 264809 606692
Eye Level: 689.11m AOD
Direction of View: 62°
Distance to Development: 1214 m

Horizontal field of view: 53.5° (planar projection)
Principal Distance: 812.5mm
Paper Size: 841 x 297 mm
Correct printed image size: 820 x 260 mm

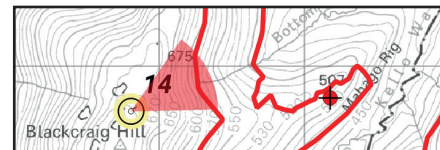
Camera: NIKON D610
Lens: 50mm
Camera Height: 1.5m AGL
Date and Time: 20/11/2024 13:10

Figure: 6.24i
Viewpoint 14: Blackcraig Hill Cairn



Photomontage - Phase 1

View flat at a comfortable arm's length

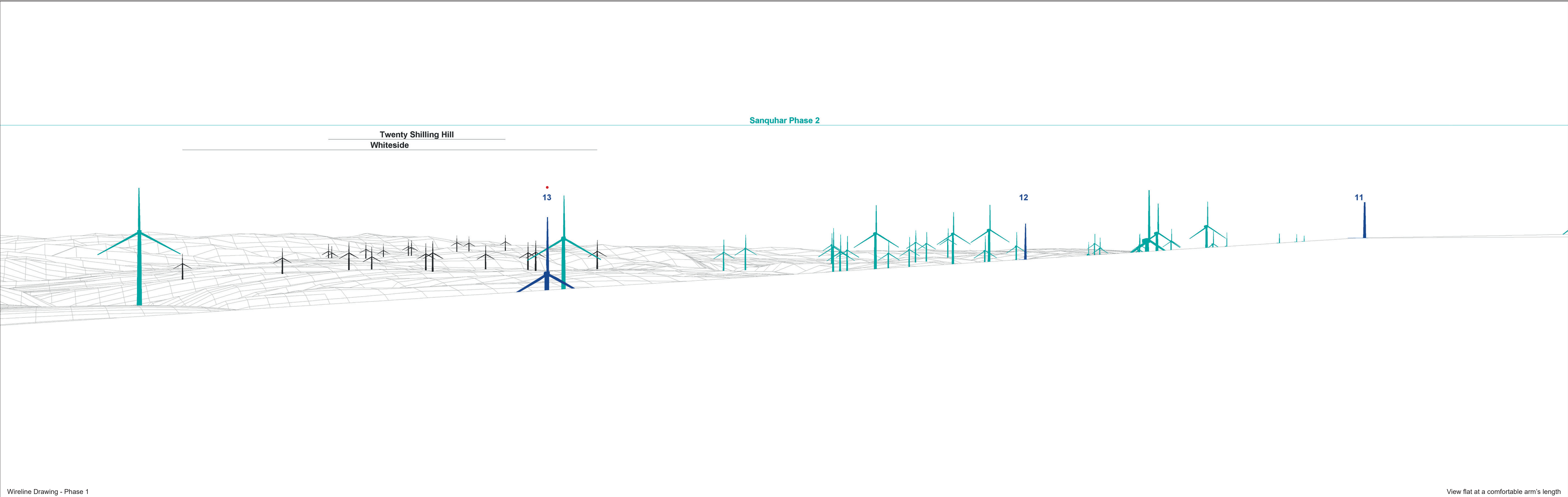


OS Reference:	264809 606692
Eye Level:	689.11m AOD
Direction of View:	62°
Distance to Development:	1214 m

Horizontal field of view:	53.5° (planar projection)
Principal Distance:	812.5mm
Paper Size:	841 x 297 mm
Correct printed image size:	820 x 260 mm

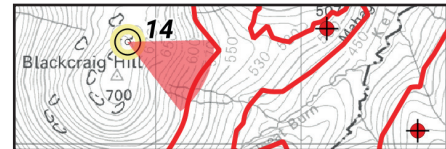
Camera:	NIKON D610
Lens:	50mm
Camera Height:	1.5m AGL
Date and Time:	20/11/2024 13:10

Figure: 6.24j
Viewpoint 14: Blackcraig Hill Cairn

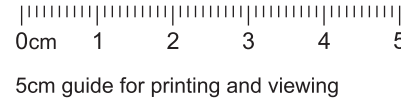


Wireline Drawing - Phase 1

View flat at a comfortable arm's length



- Aviation Light
- Proposal
- Existing
- Construction



OS Reference: 264809 606692
Eye Level: 689.11m AOD
Direction of View: 115.5°
Distance to Development: 1214 m

Horizontal field of view: 53.5° (planar projection)
Principal Distance: 812.5mm
Paper Size: 841 x 297 mm
Correct printed image size: 820 x 260 mm

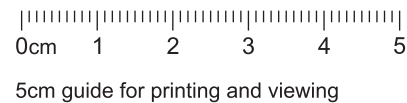
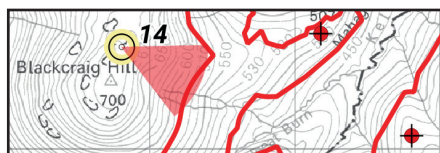
Camera: NIKON D610
Lens: 50mm
Camera Height: 1.5m AGL
Date and Time: 20/11/2024 13:10

Figure: 6.24k
Viewpoint 14: Blackcraig Hill Cairn



Photomontage - Phase 1

View flat at a comfortable arm's length



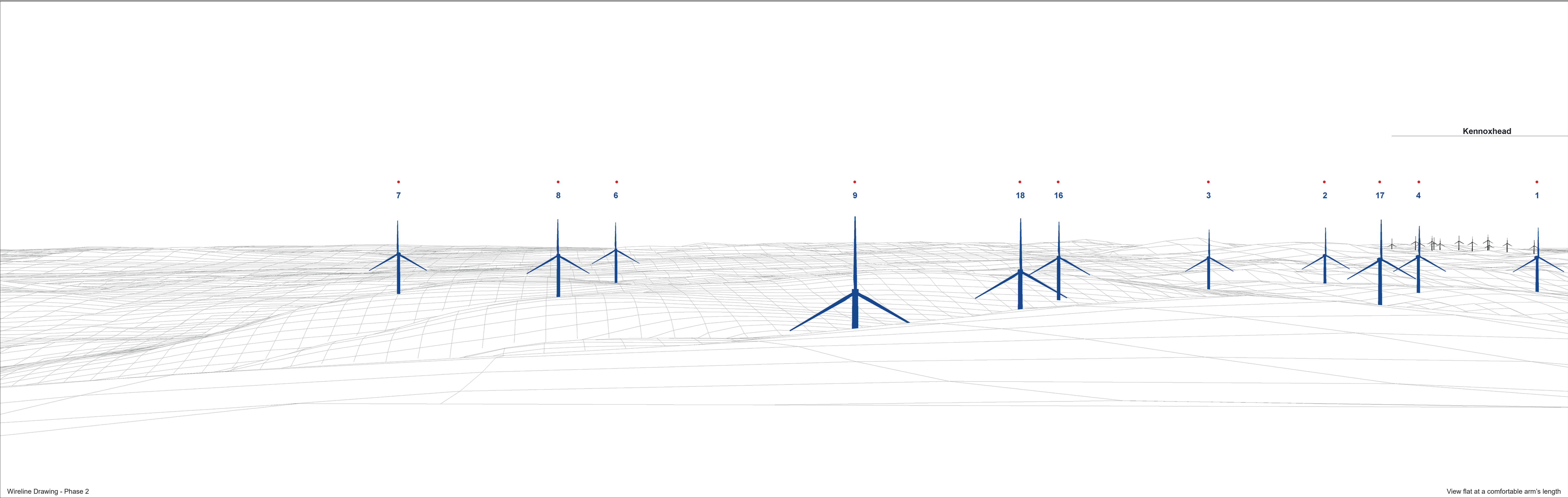
5cm guide for printing and viewing

OS Reference:	264809 606692
Eye Level:	689.11m AOD
Direction of View:	115.5°
Distance to Development:	1214 m

Horizontal field of view:	53.5° (planar projection)
Principal Distance:	812.5mm
Paper Size:	841 x 297 mm
Correct printed image size:	820 x 260 mm

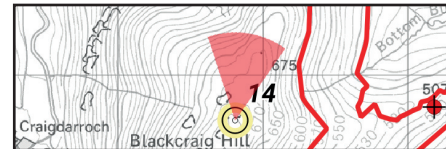
Camera:	NIKON D610
Lens:	50mm
Camera Height:	1.5m AGL
Date and Time:	20/11/2024 13:10

Figure: 6.24l
Viewpoint 14: Blackcraig Hill Cairn

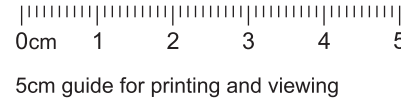


Wireline Drawing - Phase 2

View flat at a comfortable arm's length



- Aviation Light
- ✦ Proposal
- ✦ Existing
- ✦ Construction



OS Reference: 264809 606692
Eye Level: 689.11m AOD
Direction of View: 8.5°
Distance to Development: 1214 m

Horizontal field of view: 53.5° (planar projection)
Principal Distance: 812.5mm
Paper Size: 841 x 297 mm
Correct printed image size: 820 x 260 mm

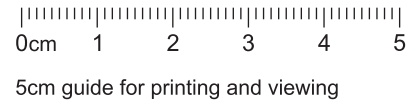
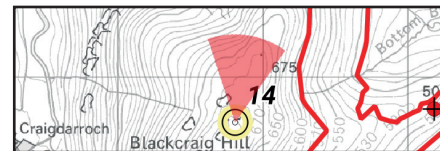
Camera: NIKON D610
Lens: 50mm
Camera Height: 1.5m AGL
Date and Time: 20/11/2024 13:10

Figure: 6.24m
Viewpoint 14: Blackcraig Hill Cairn



Photomontage - Phase 2

View flat at a comfortable arm's length



OS Reference:	264809 606692
Eye Level:	689.11m AOD
Direction of View:	8.5°
Distance to Development:	1214 m

Horizontal field of view:	53.5° (planar projection)
Principal Distance:	812.5mm
Paper Size:	841 x 297 mm
Correct printed image size:	820 x 260 mm

Camera:	NIKON D610
Lens:	50mm
Camera Height:	1.5m AGL
Date and Time:	20/11/2024 13:10

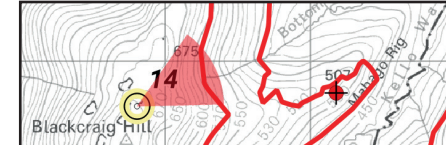
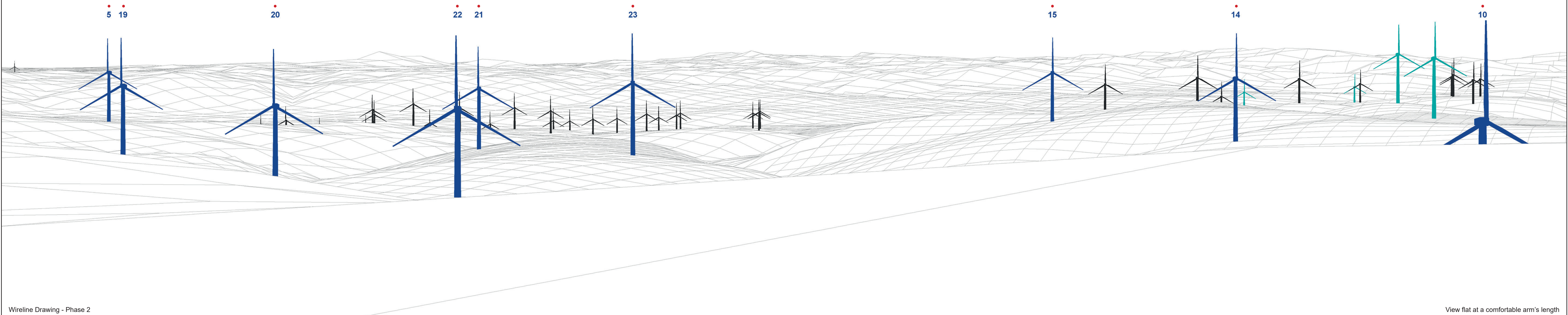
Figure: 6.24n
Viewpoint 14: Blackcraig Hill Cairn

Kennoxhead

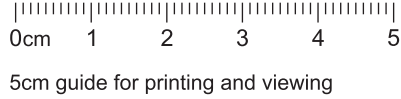
Sandy Knowe

Sanquhar

Sanquhar Phase 2



- Aviation Light
- Proposal
- Existing
- Construction



OS Reference: 264809 606692
Eye Level: 689.11m AOD
Direction of View: 62°
Distance to Development: 1214 m

Horizontal field of view: 53.5° (planar projection)
Principal Distance: 812.5mm
Paper Size: 841 x 297 mm
Correct printed image size: 820 x 260 mm

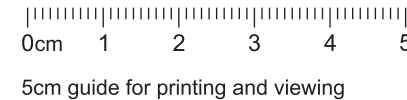
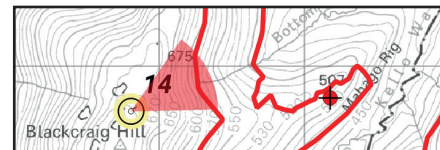
Camera: NIKON D610
Lens: 50mm
Camera Height: 1.5m AGL
Date and Time: 20/11/2024 13:10

Figure: 6.24o
Viewpoint 14: Blackcraig Hill Cairn



Photomontage - Phase 2

View flat at a comfortable arm's length

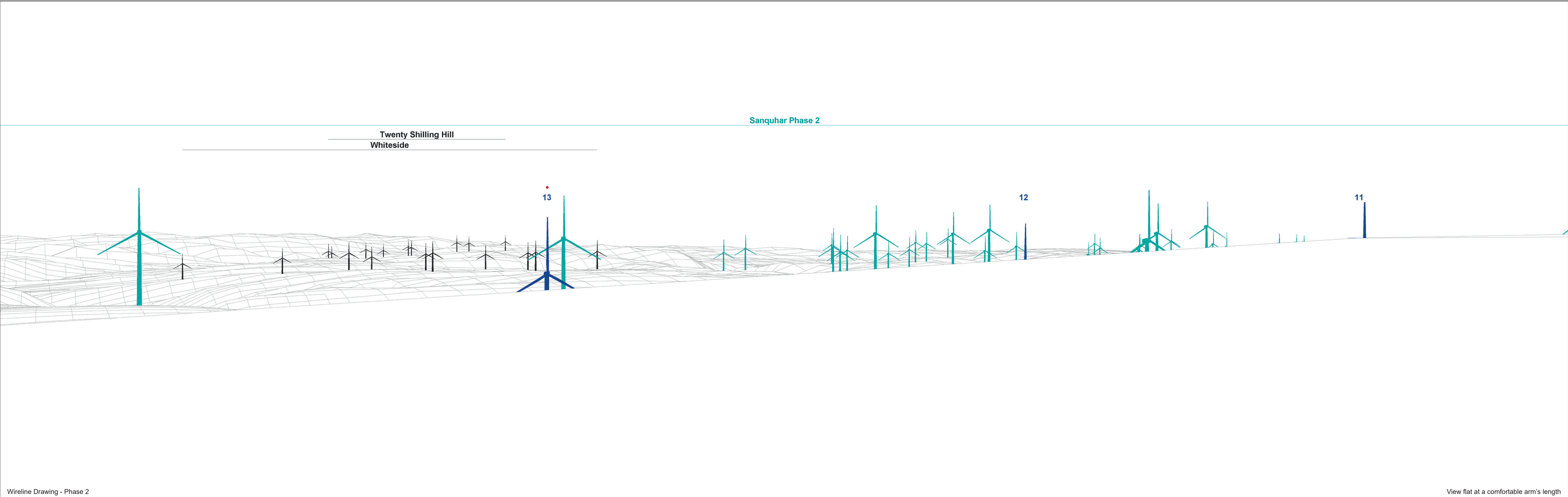


OS Reference:	264809 606692
Eye Level:	689.11m AOD
Direction of View:	62°
Distance to Development:	1214 m

Horizontal field of view:	53.5° (planar projection)
Principal Distance:	812.5mm
Paper Size:	841 x 297 mm
Correct printed image size:	820 x 260 mm

Camera:	NIKON D610
Lens:	50mm
Camera Height:	1.5m AGL
Date and Time:	20/11/2024 13:10

Figure: 6.24p
Viewpoint 14: Blackcraig Hill Cairn



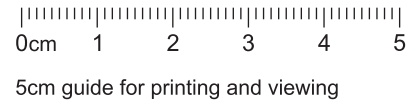
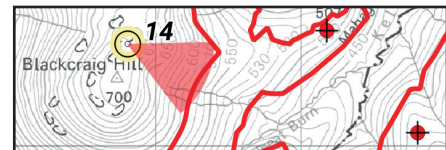
Wireline Drawing - Phase 2

View flat at a comfortable arm's length



Photomontage - Phase 2

View flat at a comfortable arm's length



5cm guide for printing and viewing

OS Reference:	264809 606692
Eye Level:	689.11m AOD
Direction of View:	115.5°
Distance to Development:	1214 m

Horizontal field of view:	53.5° (planar projection)
Principal Distance:	812.5mm
Paper Size:	841 x 297 mm
Correct printed image size:	820 x 260 mm

Camera:	NIKON D610
Lens:	50mm
Camera Height:	1.5m AGL
Date and Time:	20/11/2024 13:10

Figure: 6.24r
Viewpoint 14: Blackcraig Hill Cairn