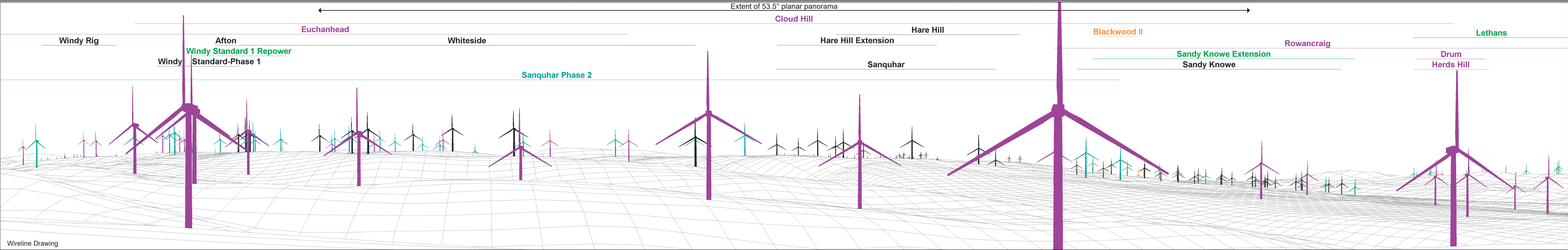


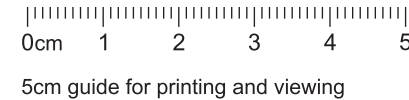
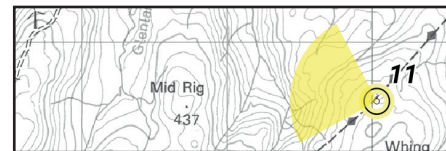


Baseline Photograph

This image provides landscape and visual context only



Wireline Drawing



- | | | | | | |
|--|----------|--|--------------|--|-------------|
| | Proposal | | Consented | | Application |
| | Existing | | Construction | | Scoping |

OS Reference:	275034 605596
Eye Level:	440.38m AOD
Direction of View:	287°
Distance to Development:	7332 m

Horizontal field of view:	90° (cylindrical projection)
Principal Distance:	522mm
Paper Size:	841 x 297 mm
Correct printed image size:	820 x 130 mm

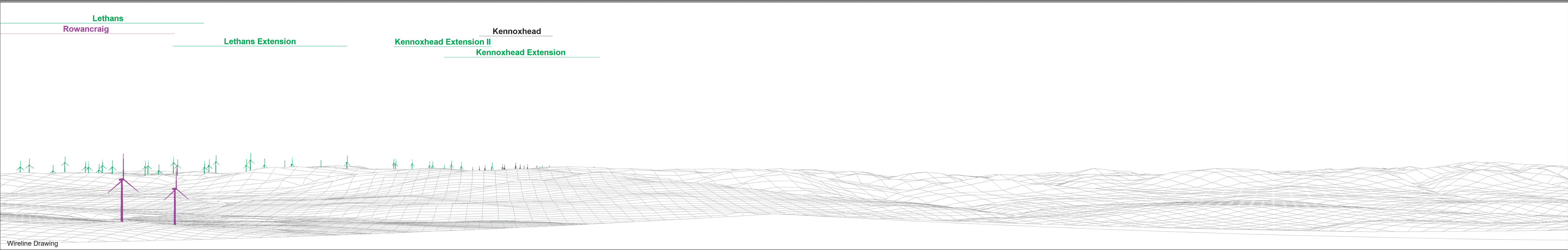
Camera:	NIKON D610
Lens:	50mm
Camera Height:	1.5m AGL
Date and Time:	11/06/2024 13:50

Figure: 6.21a
Viewpoint 11: SUW Whing Head

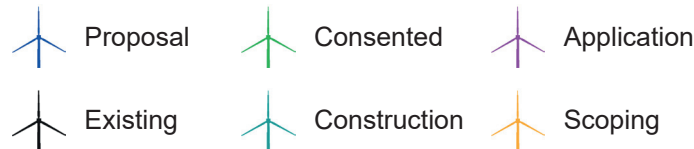
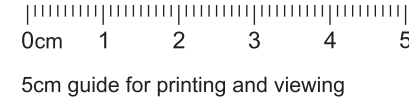
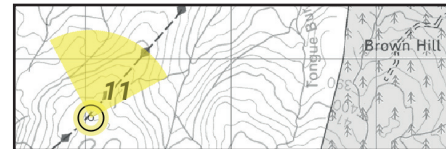


Baseline Photograph

This image provides landscape and visual context only



Wireline Drawing



OS Reference:	275034 605596
Eye Level:	440.38m AOD
Direction of View:	17°
Distance to Development:	7332 m

Horizontal field of view:	90° (cylindrical projection)
Principal Distance:	522mm
Paper Size:	841 x 297 mm
Correct printed image size:	820 x 130 mm

Camera:	NIKON D610
Lens:	50mm
Camera Height:	1.5m AGL
Date and Time:	11/06/2024 13:50

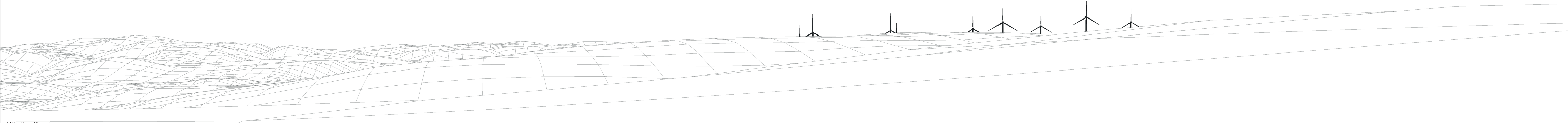
Figure: 6.21b
Viewpoint 11: SUW Whing Head



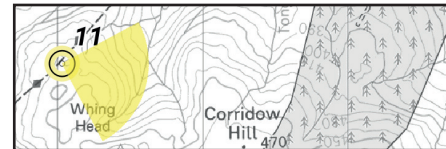
Baseline Photograph

This image provides landscape and visual context only

Twenty Shilling Hill



Wireline Drawing



0cm 1 2 3 4 5
5cm guide for printing and viewing

- Proposal
- Consented
- Application
- Existing
- Construction
- Scoping

OS Reference: 275034 605596
Eye Level: 440.38m AOD
Direction of View: 107°
Distance to Development: 7332 m

Horizontal field of view: 90° (cylindrical projection)
Principal Distance: 522mm
Paper Size: 841 x 297 mm
Correct printed image size: 820 x 130 mm

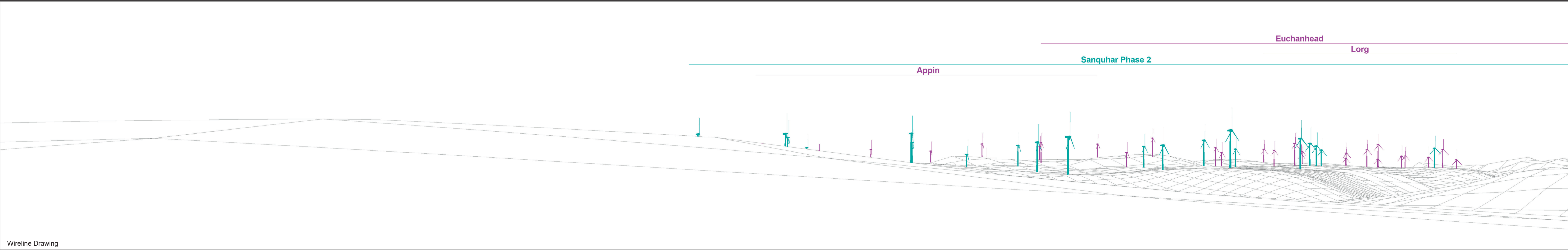
Camera: NIKON D610
Lens: 50mm
Camera Height: 1.5m AGL
Date and Time: 11/06/2024 13:50

Figure: 6.21c
Viewpoint 11: SUW Whing Head

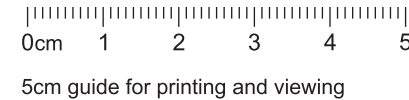
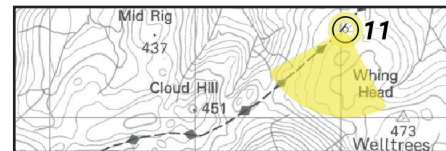








Baseline Photograph

This image provides landscape and visual context only



Wireline Drawing



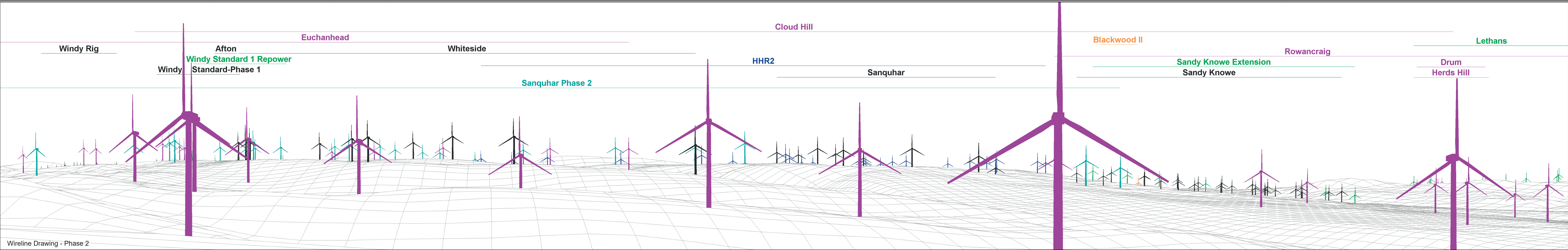
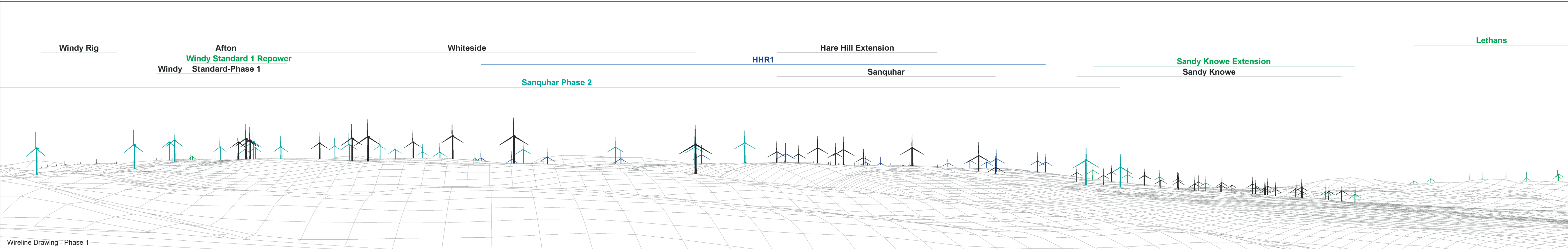
- | | | | | | |
|---|----------|---|--------------|---|-------------|
|  | Proposal |  | Consented |  | Application |
|  | Existing |  | Construction |  | Scoping |

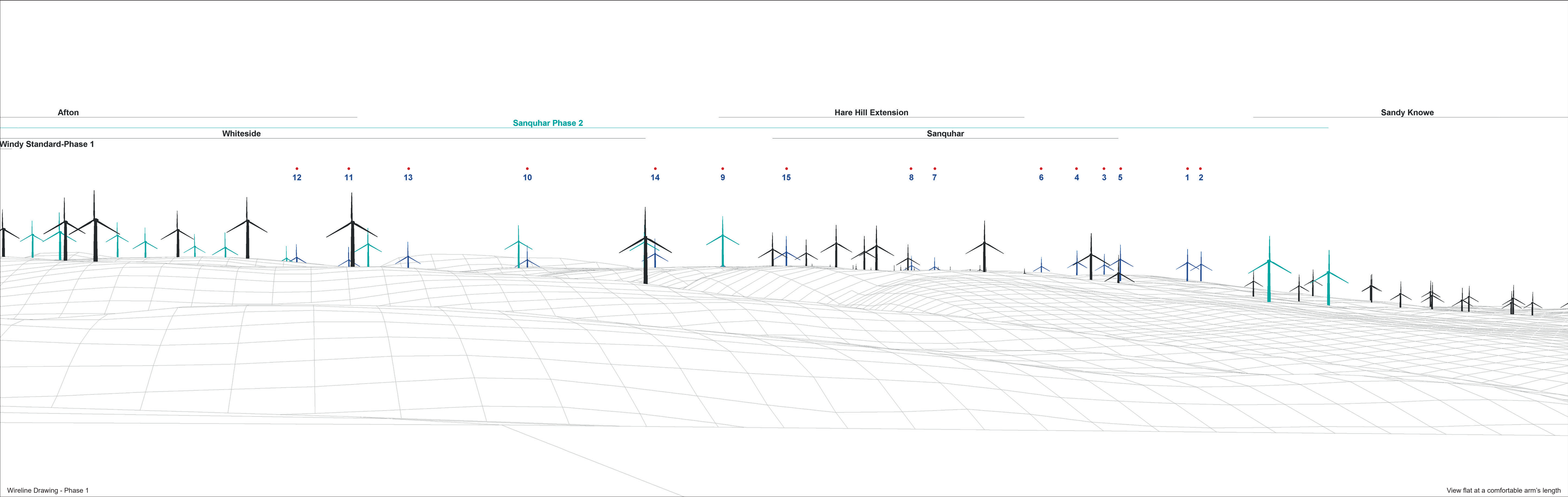
OS Reference:	275034 605596
Eye Level:	440.38m AOD
Direction of View:	197°
Distance to Development:	7332 m

Horizontal field of view:	90° (cylindrical projection)
Principal Distance:	522mm
Paper Size:	841 x 297 mm
Correct printed image size:	820 x 130 mm

Camera:	NIKON D610
Lens:	50mm
Camera Height:	1.5m AGL
Date and Time:	11/06/2024 13:50

Figure: 6.21d
Viewpoint 11: SUW Whing Head

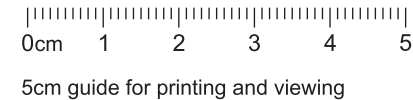
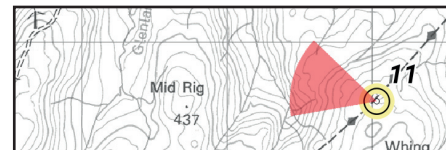






Photomontage - Phase 1

View flat at a comfortable arm's length

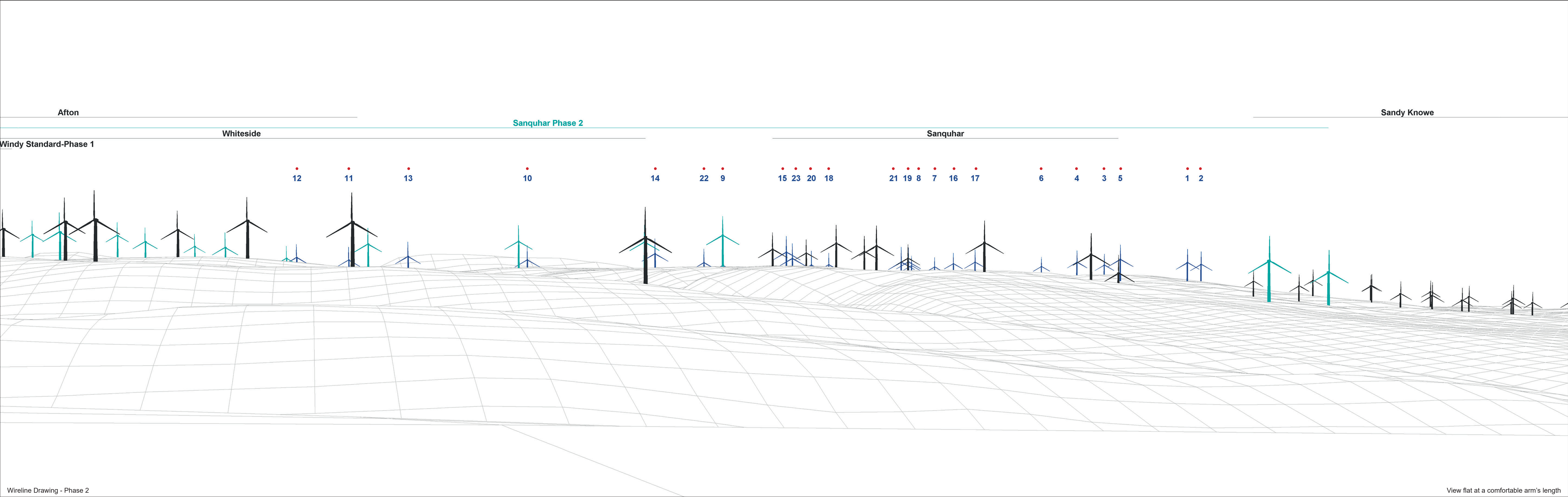


OS Reference:	275034 605596
Eye Level:	440.38m AOD
Direction of View:	287°
Distance to Development:	7332 m

Horizontal field of view:	53.5° (planar projection)
Principal Distance:	812.5mm
Paper Size:	841 x 297 mm
Correct printed image size:	820 x 260 mm

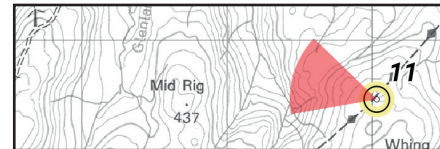
Camera:	NIKON D610
Lens:	50mm
Camera Height:	1.5m AGL
Date and Time:	11/06/2024 13:50

Figure: 6.21g
Viewpoint 11: SUW Whing Head



Wireline Drawing - Phase 2

View flat at a comfortable arm's length



- Aviation Light
- Proposal
- Existing
- Construction



OS Reference: 275034 605596
Eye Level: 440.38m AOD
Direction of View: 287°
Distance to Development: 7332 m

Horizontal field of view: 53.5° (planar projection)
Principal Distance: 812.5mm
Paper Size: 841 x 297 mm
Correct printed image size: 820 x 260 mm

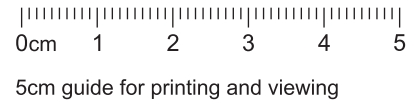
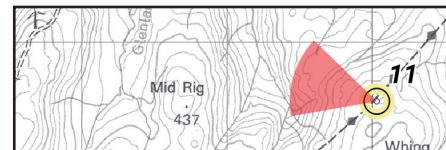
Camera: NIKON D610
Lens: 50mm
Camera Height: 1.5m AGL
Date and Time: 11/06/2024 13:50

Figure: 6.21h
Viewpoint 11: SUW Whing Head



Photomontage - Phase 2

View flat at a comfortable arm's length



OS Reference:	275034 605596
Eye Level:	440.38m AOD
Direction of View:	287°
Distance to Development:	7332 m

Horizontal field of view:	53.5° (planar projection)
Principal Distance:	812.5mm
Paper Size:	841 x 297 mm
Correct printed image size:	820 x 260 mm

Camera:	NIKON D610
Lens:	50mm
Camera Height:	1.5m AGL
Date and Time:	11/06/2024 13:50

Figure: 6.21i
Viewpoint 11: SUW Whing Head