

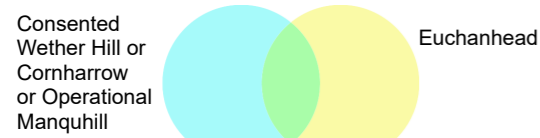
260000

280000

**Legend**

- Proposed Turbine Location (200 m Tip Height)
  - Proposed Turbine Location (230 m Tip Height)
  - 5 - 45 km Buffer of Turbine Locations (5 km Intervals)
  - Viewpoint Location
  - Additional Wireline Location
- Status of Cumulative Wind Farms**
- Operational
  - Consented

**Zones of Theoretical Visibility**

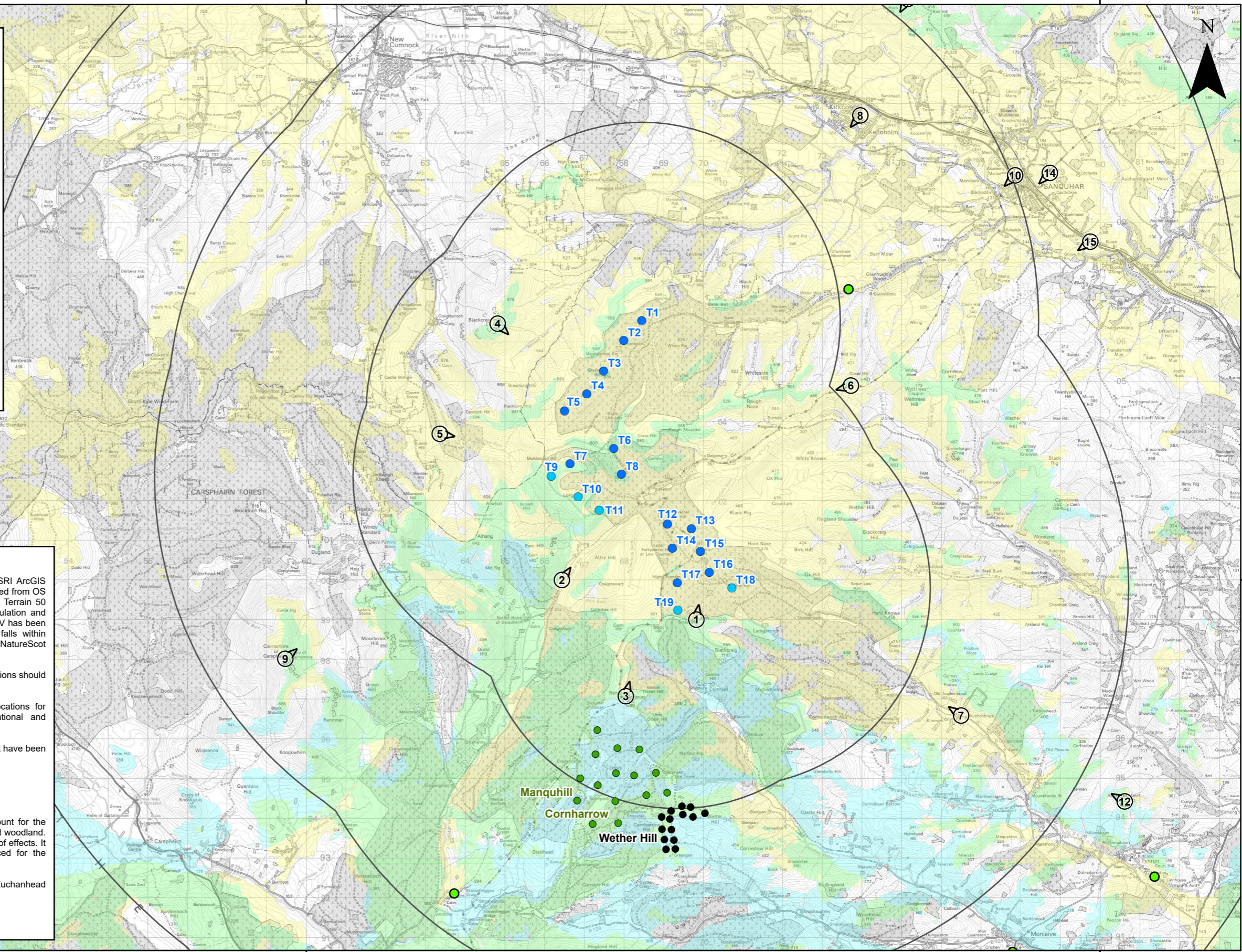


**Note**

This Zone of Theoretical Visibility (ZTV) has been generated using ESRI ArcGIS Spatial Analyst extension. The digital terrain model (DTM) has been derived from OS Terrain 5 dataset (+/-2 m) up to 40 km from turbine locations, and OS Terrain 50 dataset (+/-10 m). Earth curvature has been included in the ZTV calculation and refraction of light has been applied using SNH guidance settings. The ZTV has been generated from a viewing height of 2 m above ground level which falls within recommendations by "Visual Representation of Windfarms" prepared for NatureScot February 2017 - Version 2.2.

The use of ZTV mapping at this stage is limited and the following assumptions should be noted:

- The ZTV has been generated using the proposed AEI turbine locations for Euchanhead. The baseline ZTV has been generated from Operational and Consented turbine locations listed below.
- The proposed, operational and consented turbine blade tips heights that have been used for generating the ZTV are listed below:
  - Euchanhead = 200/230 m
  - Wether Hill = 91 m
  - Cornharrow = 200 m
  - Manquhill = 200 m
- The ZTV is generated from a bare earth terrain and does not account for the screening effect of features within the landscape such as settlements and woodland. It does not indicate potential visual effects or show the likely significance of effects. It shows potential theoretical visibility only. The ZTV has been produced for the purpose of informing 'on the ground' visual assessment.
- The ZTV has been generated up to 65 km from the proposed Euchanhead turbines.
- Please refer to Figure 3.1 for Site Application Boundary.



260000

280000



Rev	Date	By	Comment
A	23/07/25	AA	First Issue.

1:100,000  
Scale @ A3

Note: Infrastructure shown at appropriate scale.  
© Crown copyright [and database rights] (2025) AC000080122 OS OpenData.

**Euchanhead Renewable Energy Development AEI**  
Chapter 7 - Landscape and Visual Amenity  
ZTV to Blade Tip: Operational or Consented Wether Hill, Cornharrow and Manquhill with Euchanhead

Drg No	428.013391.00001.0037.0	
Rev	A	Datum: OSGB36
Date	23/07/25	Projection: OSNG
AEI Figure	7.20	