



LEGEND
 Site Boundary



REV	DATE	BY	CHK	APR	REVISION HISTORY
A	05/11/25	SH	JH	BF	First Issue.

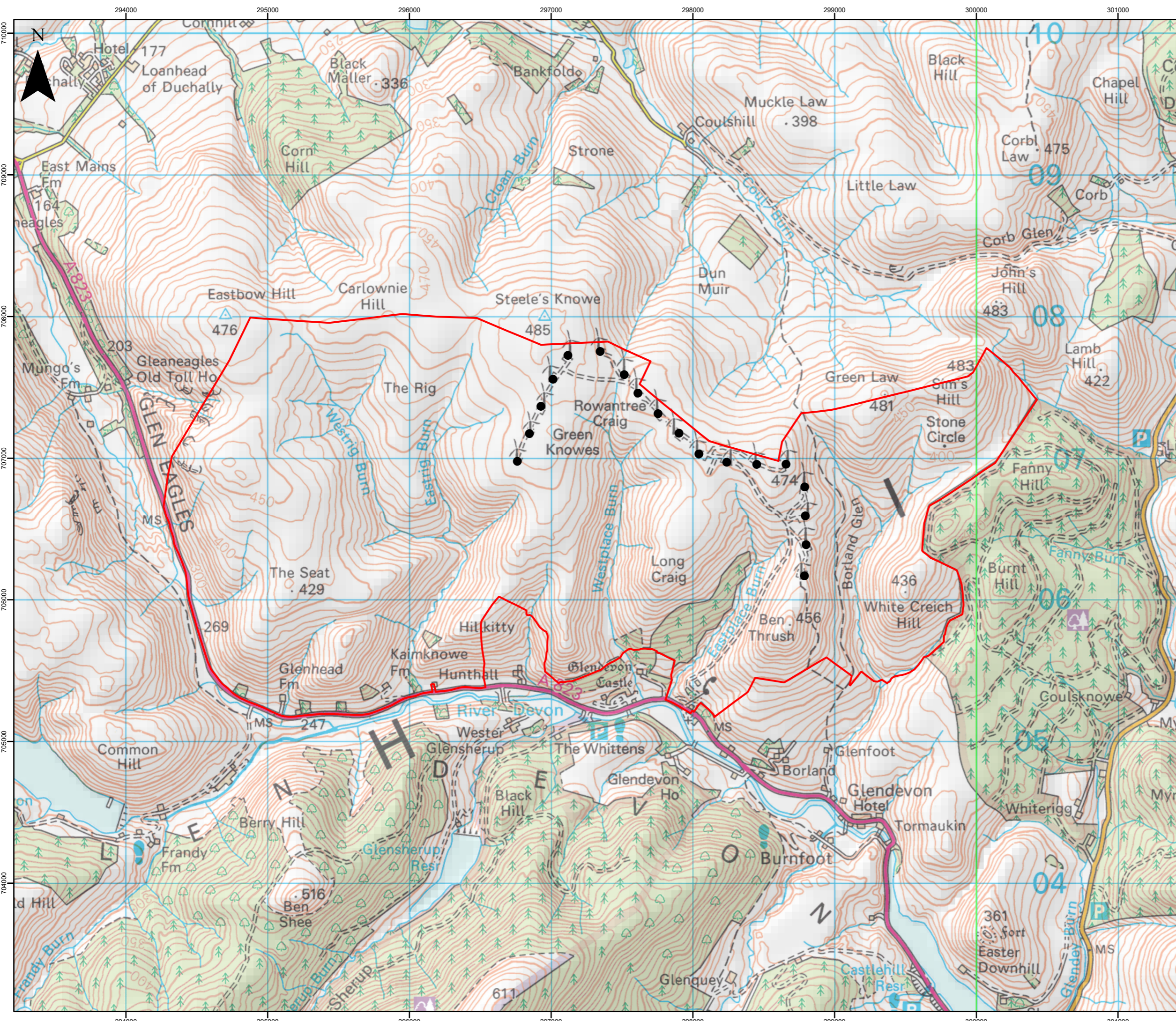


ISSUE DETAILS	
DRAWN BY: SH	CHECKED: JH
APPROVED: BF	DATE: 25/02/2026
REVISION: A	SHEET: 1 OF 1
PAGE SIZE: A3	STATUS: DRAFT
DATUM: OSGB 1936	PROJECTION: TM

SCALE: 1:150,000

© Crown Copyright 2026. All rights reserved.
 Ordnance Survey Licence AC0000808122.

TITLE
 INTRODUCTION
 FIGURE 1.1 SITE LOCATION
PROJECT
 Green Knowes WF Repowering Scoping
DRAWING NUMBER
 428.013438.00001.0022.0



- LEGEND**
- Site Boundary
 - Green Knowes Operational Turbine

REV	DATE	BY	CHK	APR	REVISION HISTORY
A	05/11/25	SH	JH	BF	First Issue.



ISSUE DETAILS	
DRAWN BY: SH	CHECKED: JH
APPROVED: BF	DATE: 19/11/2025
REVISION: A	SHEET: 1 OF 1
PAGE SIZE: A3	STATUS: DRAFT
DATUM: OSGB 1936	PROJECTION: TM

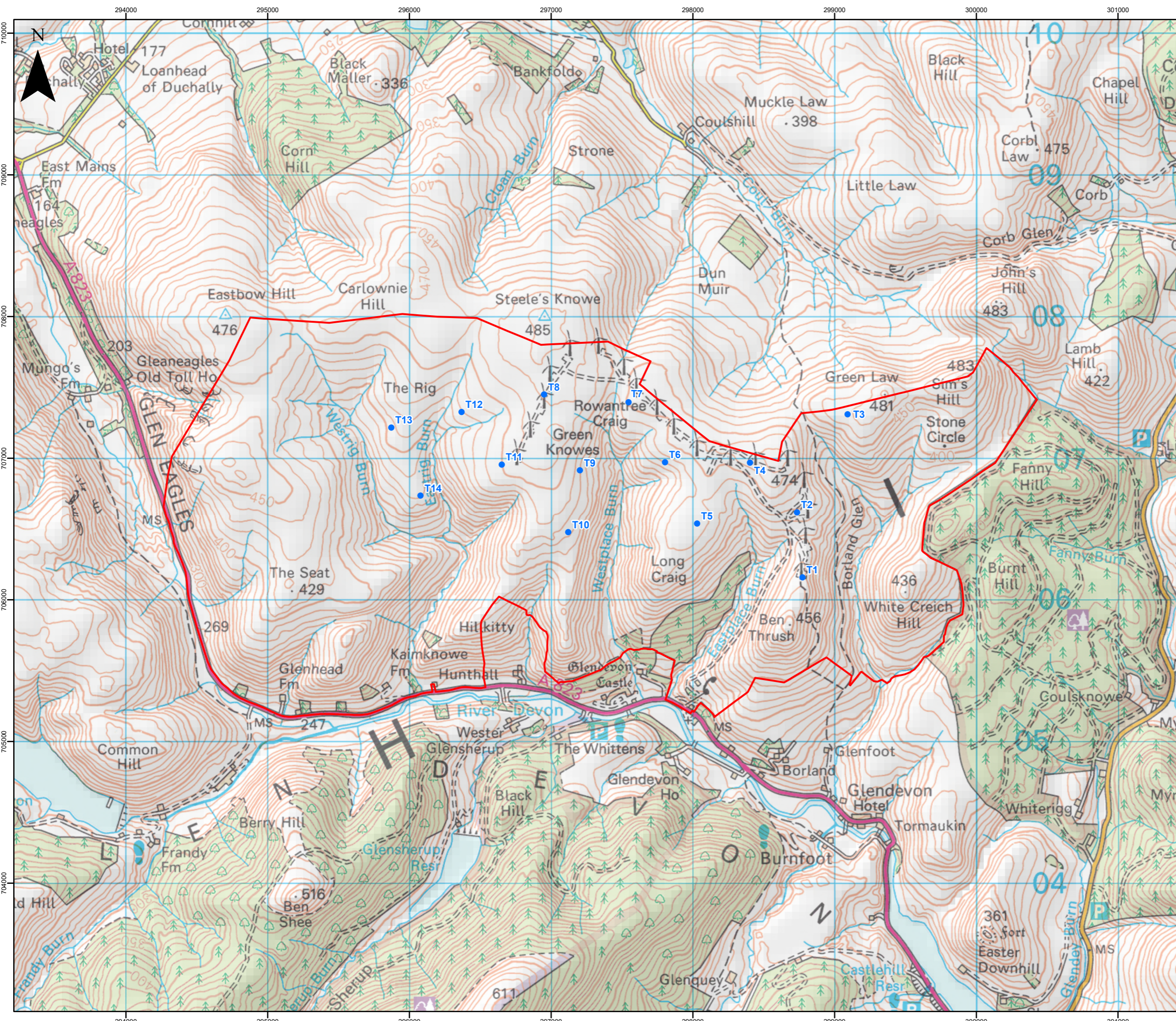
SCALE: 1:25,000

© Crown Copyright 2025. All rights reserved.
Ordnance Survey Licence AC0000808122.

TITLE
INTRODUCTION
FIGURE 1.2 OPERATIONAL SITE LAYOUT

PROJECT
Green Knowes WF Repowering Scoping

DRAWING NUMBER
428.013438.00001.0023.0



- LEGEND**
- Site Boundary
 - Proposed Turbine

REV	DATE	BY	CHK	APR	REVISION HISTORY
C	25/02/26	MC	SH	BF	Third Issue.
B	05/12/25	MC	GG	BF	Second Issue.
A	05/11/25	SH	JH	BF	First Issue.



ISSUE DETAILS	
DRAWN BY: MC	CHECKED: SH
APPROVED: BF	DATE: 25/02/2026
REVISION: C	SHEET: 1 OF 1
PAGE SIZE: A3	STATUS: DRAFT
DATUM: OSGB 1936	PROJECTION: TM

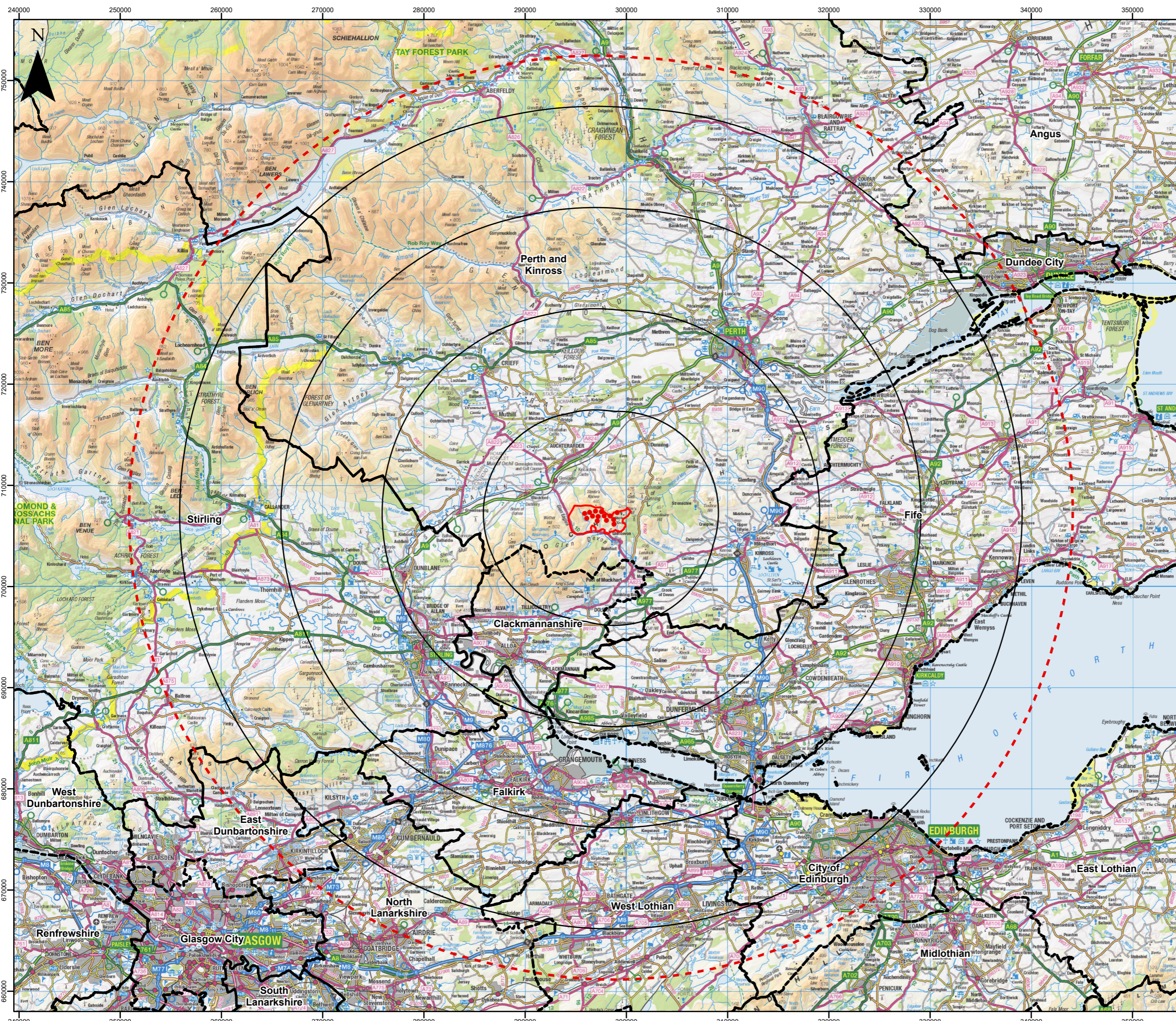
SCALE: 1:25,000

© Crown Copyright 2026. All rights reserved.
Ordnance Survey Licence AC0000808122.

TITLE
PROPOSED DEVELOPMENT
FIGURE 3.1 INDICATIVE SITE LAYOUT

PROJECT
Green Knowes WF Repowering Scoping

DRAWING NUMBER
428.013438.00001.0024.2



LEGEND

- Site Boundary
- Proposed Turbine
- 10 km Radii
- 45 km Study Area
- Local Authority

A	05/11/25	SH	AE	BF	First Issue.
REV	DATE	BY	CHK	APR	REVISION HISTORY



ISSUE DETAILS	
DRAWN BY: SH	CHECKED: AE
APPROVED: BF	DATE: 20/11/2025
REVISION: A	SHEET: 1 OF 1
PAGE SIZE: A3	STATUS: DRAFT
DATUM: OSGB 1936	PROJECTION: TM
SCALE: 1:350,000	

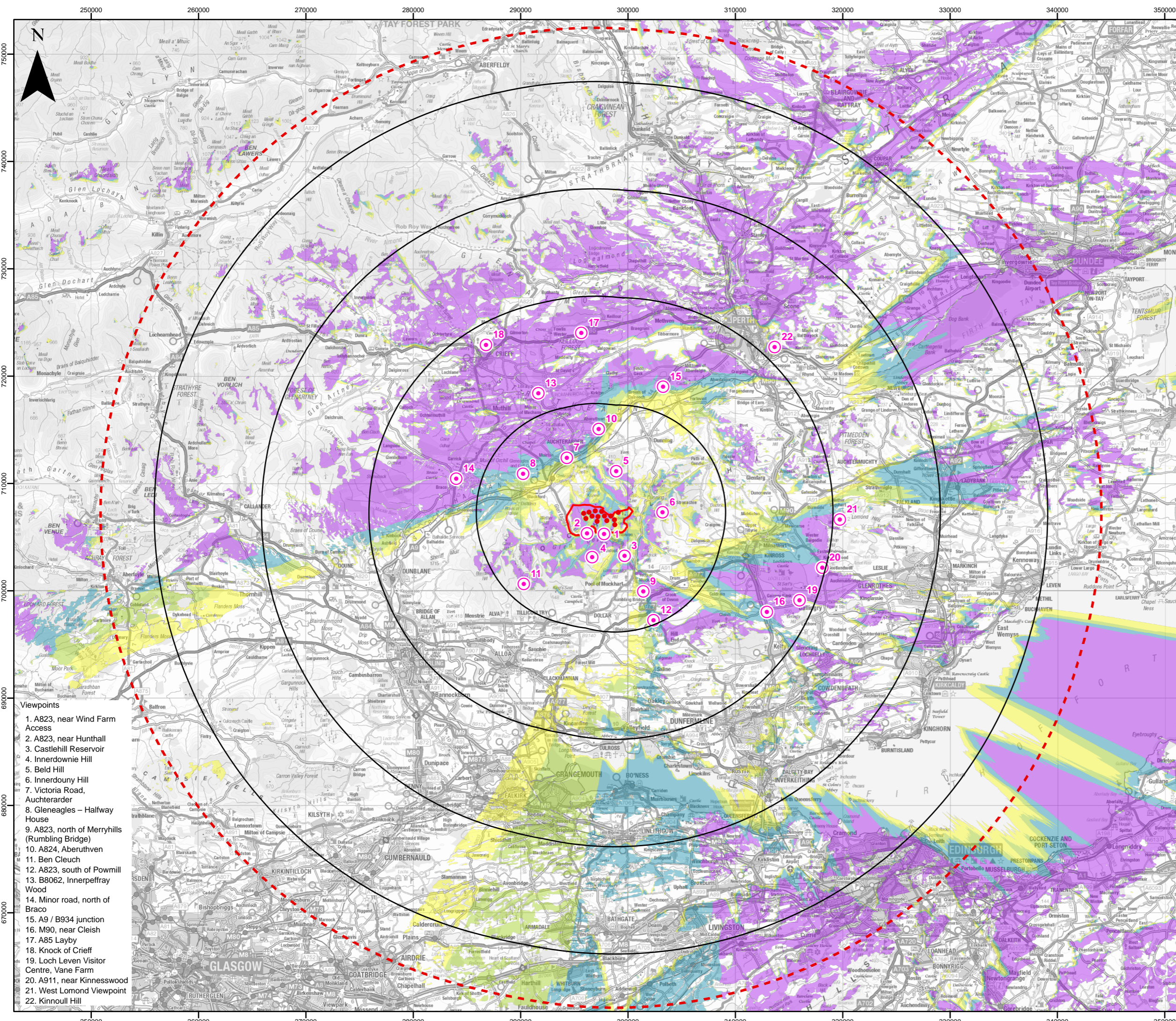
© Crown Copyright 2025. All rights reserved.
Ordnance Survey Licence AC0000808122.

TITLE
LANDSCAPE
FIGURE 5.1 LVIA STUDY AREA

PROJECT
Green Knowes WF Repowering Scoping

DRAWING NUMBER
428.013438.00001.0010.0

PLEASE COPY CORRECT COPYRIGHT STATEMENTS FROM TEXT TO THE RIGHT.
HIDE IF NOT REQUIRED FOR PLAN



LEGEND

- Site Boundary
- Proposed Turbine
- 10 km Radii
- 45 km Study Area
- Viewpoint

Blade Tip Zone of Theoretical Visibility (ZTV) Bare Earth

Number of Blade Tips Theoretically Visible

- 1 - 4
- 5 - 8
- 9 - 12
- 13 - 14

Blade Tip:	180m	Observer height:	2m
DTM:	OS T5/T50 DTM	Surface features:	Excluded
DTM resolution:	10m	Earth curvature:	Included

This Zone of Theoretical Visibility (ZTV) has been generated using ESRI ArcGIS Spatial Analyst extension using the assumptions detailed in the infobox above. The digital terrain model (DTM) has the following accuracy: OS Terrain 5 dataset (+/-2 m) up to 5km from turbine locations, OS Terrain 50 dataset (+/-10 m) outwith this. The combined DTM has been resampled to 10 m resolution. The ZTV view height of 2 m above ground level is recommended by "Visual Representation of Windfarms" by NatureScot February 2017 - Version 2.2. The ZTV is generated from a bare earth terrain and does not account for the screening effect of features within the landscape such as settlements and woodland. The ZTV shows potential theoretical visibility only and is for informing 'on the ground' visual assessment.

- Viewpoints**
1. A823, near Wind Farm Access
 2. A823, near Hunthall
 3. Castlehill Reservoir
 4. Innerdownie Hill
 5. Beld Hill
 6. Innerdouny Hill
 7. Victoria Road, Auchterarder
 8. Gleneagles – Halfway House
 9. A823, north of Merryhills (Rumbling Bridge)
 10. A824, Aberthven
 11. Ben Cleuch
 12. A823, south of Powmill
 13. B8062, Innerpefferay Wood
 14. Minor road, north of Bracco
 15. A9 / B934 junction
 16. M90, near Cleish
 17. A85 Layby
 18. Knock of Crieff
 19. Loch Leven Visitor Centre, Vane Farm
 20. A911, near Kinnesswood
 21. West Lomond Viewpoint
 22. Kinnoull Hill

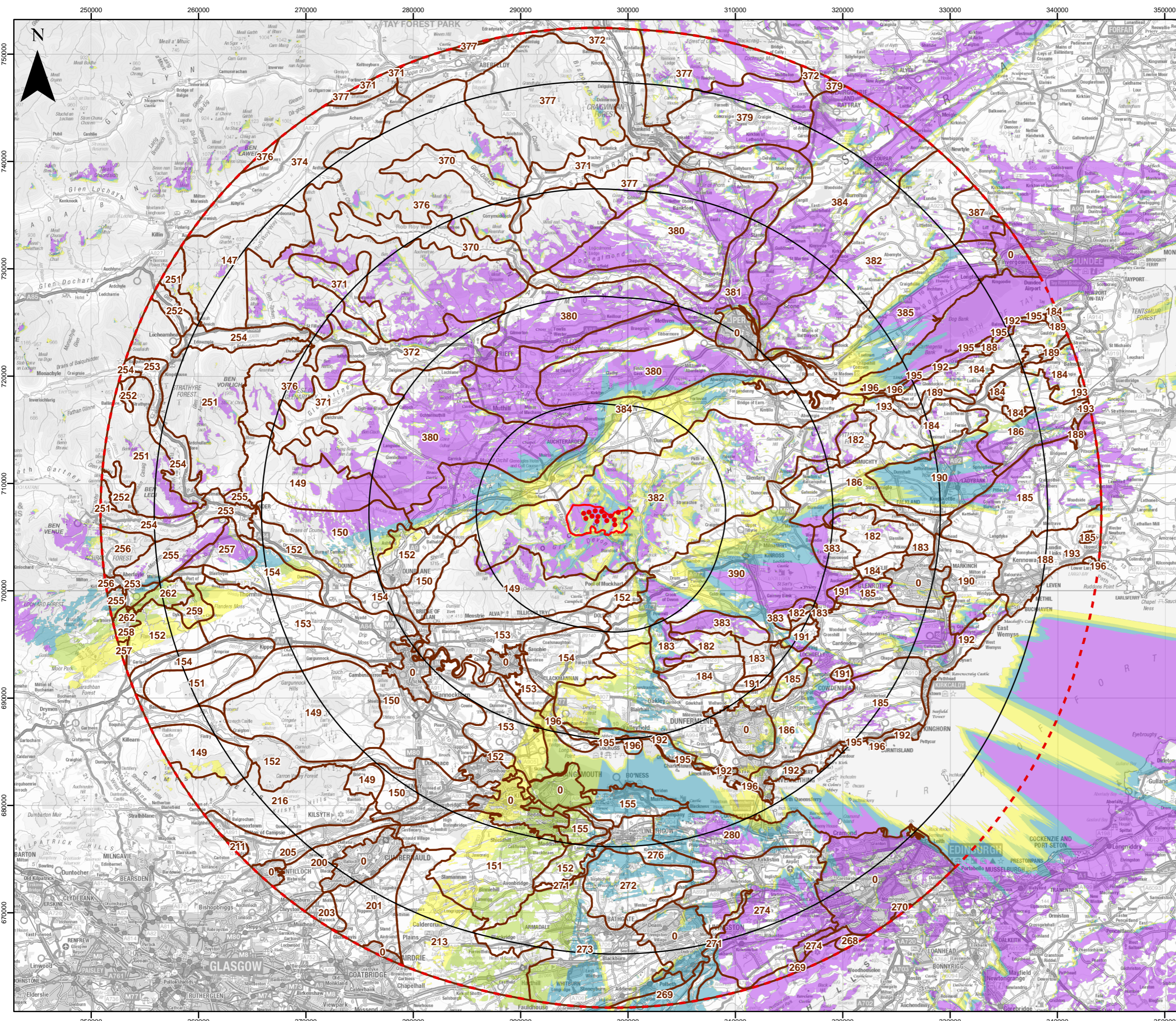
A	05/11/25	SH	AE	BF	First Issue.				
REV	DATE	BY	CHK	APR	REVISION HISTORY				



ISSUE DETAILS	
DRAWN BY: SH	CHECKED: AE
APPROVED: BF	DATE: 13/11/2025
REVISION: A	SHEET: 1 OF 1
PAGE SIZE: A3	STATUS: DRAFT
DATUM: OSGB 1936	PROJECTION: TM
SCALE: 1:330,000	

© Crown Copyright 2025. All rights reserved.
Ordnance Survey Licence AC0000808122.

TITLE
LANDSCAPE
FIGURE 5.3 BLADE TIP ZTV
WITH LVIA VIEWPOINTS
PROJECT
Green Knowes WF Repowering Scoping
DRAWING NUMBER
428.013438.00001.0012.0



LEGEND

- Site Boundary
- Proposed Turbine
- 10 km Radii
- 45 km Study Area
- Landscape Character Area

Blade Tip Zone of Theoretical Visibility (ZTV) Bare Earth

Number of Blade Tips Theoretically Visible

- 1 - 4
- 5 - 8
- 9 - 12
- 13 - 14

Blade Tip:	180m	Observer height:	2m
DTM:	OS T5/T50 DTM	Surface features:	Excluded
DTM resolution:	10m	Earth curvature:	Included

NOTES:
 See Figure 5.3 for ZTV Information
 See Figure 5.4B for Landscape Character Key
 Landscape Character Areas
 clipped to 45km Study Area

A	05/11/25	SH	AE	BF	First Issue.
REV	DATE	BY	CHK	APR	REVISION HISTORY



ISSUE DETAILS	
DRAWN BY: SH	CHECKED: AE
APPROVED: BF	DATE: 20/11/2025
REVISION: A	SHEET: 1 OF 1
PAGE SIZE: A3	STATUS: DRAFT
DATUM: OSGB 1936	PROJECTION: TM
SCALE: 1:330,000	

© Crown Copyright 2025. All rights reserved.
 Ordnance Survey Licence AC0000808122.

TITLE
 LANDSCAPE
 FIGURE 5.4A BLADE TIP ZTV
 WITH LANDSCAPE CHARACTER
PROJECT
 Green Knowes WF Repowering Scoping
DRAWING NUMBER
 428.013438.00001.0015.0

Contains NatureScot data licensed under the Open Government Licence v3.0

LEGEND

 Landscape Character Area

Source: NatureScot Landscape Character Assessment 2019

- 0. Urban
- 147. Summits and Plateaux - Central
- 149. Lowland Hills - Central
- 150. Lowland Hill Fringes - Central
- 151. Lowland Plateaux - Central
- 152. Lowland River Valleys - Central
- 153. Carselands
- 154. Lowland Valley Fringes
- 155. Coastal Farmland - Central
- 182. Upland Hills
- 183. Hill Slopes
- 184. Foothills - Fife
- 185. Pronounced Hills and Crags
- 186. Lowland Hills and Valleys
- 188. Lowland Dens
- 189. Lowland Valley - Fife
- 190. Lowland River Basins
- 191. Lowland Loch Basins - Fife
- 192. Coastal Hills - Fife
- 193. Coastal Terraces - Fife
- 195. Coastal Braes
- 196. Coastal Flats - Fife

- 200. Rolling Farmland - Glasgow & Clyde Valley
- 201. Plateau Farmland - Glasgow & Clyde Valley
- 203. Urban Fringe Farmland
- 205. Broad Valley Lowland - Glasgow & Clyde Valley
- 211. Drumlin Foothills
- 213. Plateau Moorlands - Glasgow & Clyde Valley
- 216. Rugged Moorland Hills
- 251. Highland Summits
- 252. Upland Glens - Loch Lomond & the Trossachs
- 253. Straths and Glens
- 254. Straths and Glens with Lochs
- 255. Parallel Ridges - Loch Lomond & the Trossachs
- 256. Rolling Forested Plateau
- 257. Plateau Moor and Forest - Loch Lomond & the Trossachs
- 258. Ridges and Knolls with Estates
- 259. Rolling Farmland and Estates - Loch Lomond & the Trossachs
- 262. Lowland Peatland and Loch Basin
- 268. Upland Hills - Lothians

- 269. Upland Fringes - Lothians
- 270. Lowland River Valleys - Lothians
- 271. Lowland River Corridors - Lothians
- 272. Lowland Hills and Ridges - Lothians
- 273. Lowland Plateaux - Lothians
- 274. Lowland Plain
- 276. Lowland Hill Fringes - Lothians
- 280. Coastal Farmland - Lothians
- 370. Upper Upland Glens
- 371. Mid Upland Glens
- 372. Lower Upland Glens
- 374. Mid Upland Glens with Lochs
- 376. Summits and Plateaux - Tayside
- 377. Transitional Moorland and Forest
- 379. Foothills - Tayside
- 380. Lowland Hills - Tayside
- 381. Lowland River Corridors - Tayside
- 382. Lowland Hill Ranges
- 383. Rugged Lowland Hills
- 384. Broad Valley Lowlands - Tayside
- 385. Firth Lowlands
- 387. Dipslope Farmland
- 390. Lowland Basins

A	05/11/25	SH	SF	BF	First Issue.
REV	DATE	BY	CHK	APR	REVISION HISTORY



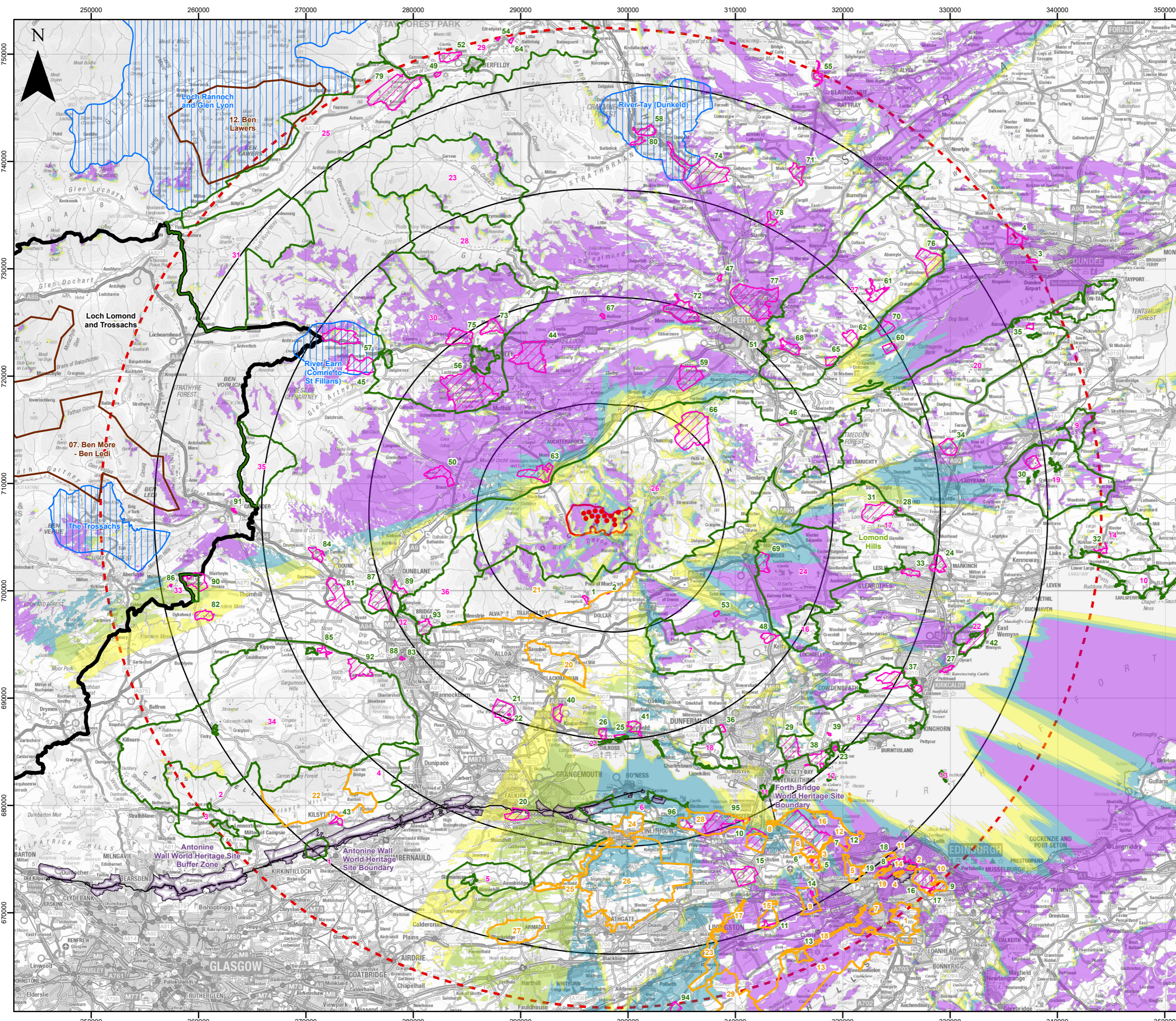
ISSUE DETAILS	
DRAWN BY: SH	CHECKED: SF
APPROVED: BF	DATE: 20/11/2025
REVISION: A	SHEET: 1 OF 1
PAGE SIZE: A3	STATUS: DRAFT
DATUM: OSGB 1936	PROJECTION: TM

© Crown Copyright 2025. All rights reserved.
Ordnance Survey Licence AC0000808122.

TITLE
LANDSCAPE
FIGURE 5.4B LCA KEY

PROJECT
Green Knowes WF Repowering Scoping

DRAWING NUMBER
428.013438.00001.0019.0



LEGEND

- Site Boundary
- Proposed Turbine
- 10 km Radii
- 45 km Study Area
- Local Landscape Area
- Special Landscape Area
- National Park
- National Scenic Area
- Wild Land
- Garden & Designed Landscape
- World Heritage Site

Blade Tip Zone of Theoretical Visibility (ZTV) Bare Earth

Number of Blade Tips Theoretically Visible

- 1 - 4
- 5 - 8
- 9 - 12
- 13 - 14

Blade Tip:	180m	Observer height:	2m
DTM:	OS T5/T50 DTM	Surface features:	Excluded
DTM resolution:	10m	Earth curvature:	Included

NOTES:
 For Designations key see Figure 5.5B
 For ZTV Information see Figure 5.3

A	05/11/25	SH	AE	BF	First Issue.
REV	DATE	BY	CHK	APR	REVISION HISTORY



ISSUE DETAILS	
DRAWN BY: SH	CHECKED: AE
APPROVED: BF	DATE: 26/01/2026
REVISION: A	SHEET: 1 OF 1
PAGE SIZE: A3	STATUS: DRAFT
DATUM: OSGB 1936	PROJECTION: TM
SCALE: 1:330,000	

© Crown Copyright 2026. All rights reserved.
 Ordnance Survey Licence AC0000808122.


TITLE
 LANDSCAPE
 FIGURE 5.5A BLADE TIP ZTV WITH
 LANDSCAPE DESIGNATIONS
PROJECT
 Green Knowes WF Repowering Scoping
DRAWING NUMBER
 428.013738.00001.0016.0

Contains public sector information licensed under the Open Government Licence v3.0. Contains Historic Environment Scotland and Ordnance Survey data © Historic Environment Scotland - Scottish Charity No. SC045925 © Crown copyright and database right (2025). Copyright Scottish Government, contains Ordnance Survey data © Crown copyright and database right (2025). Contains NatureScot information licensed under the Open Government Licence v3.0.

LEGEND

 Local Landscape Area

1. Bar Hill
2. Campsie Fells
3. Glazert Valley
4. Denny Hill SLA
5. Slamannan Plateau/Avon Valley SLA
6. South Bo'ness SLA
7. Cleish Hills
8. Cullaloe Hills and Coast
9. Dura Den
10. East Neuk
11. Ferry Hills
12. Inchcolm
13. Inchkeith
14. Largo Law
15. Letham Hill
16. Loch Ore and Benarty
17. Lomond Hills
18. South West Dunfermline
19. Tarvit and Ceres
20. Tay Coast
21. Upper Forth
22. Wemyss Coast
23. Glen Quaich
24. Loch Leven and Lomond Hills
25. Loch Tay
26. Ochil Hills
27. Sidlaw Hills
28. Sma' Glen and Glen Almond
29. Strath Tay
30. Upper Strathearn
31. Creag Gharbh
32. Keir
33. Rednock
34. Southern Hills
35. Uamh Bheag
36. Western Ochils


 Special Landscape Area

1. Braids, Liberton, Mortonhall
2. Calton Hill
3. Cammo
4. Castle Rock
5. Corstorphine Hill
6. Craigie Hill
7. Craiglockhart
8. Dundas
9. Gogar
10. Holyrood, Duddingston and Prestonfield
11. Inverleith
12. Lower Almond
13. Pentlands
14. Princes Street Gardens
15. Ratho Hills
16. Southern Forth Coast
17. Upper Almond
18. Water of Leith - West
19. Water of Leith, New Town
20. Forest
21. Ochils
22. Kilsyth Hills
23. Almond and Linhouse Valleys
24. Airnath Hill
25. Avon Valley
26. Bathgate Hills
27. Blackridge Heights
28. Forth Loast
29. Pentland Hills

 Garden & Designed Landscape

1. Castle Campbell
2. Cowden Japanese-Style Garden
3. Balgay Park
4. Camperdown House
5. Cammo
6. Craigiehall
7. Dalmeny
8. Dean Cemetery
9. Duddingston House
10. Dundas Castle
11. Hatton House
12. Lauriston Castle
13. Malleny
14. Millburn Tower
15. Newliston
16. Palace of Holyroodhouse
17. Prestonfield House (Priestfield)
18. Royal Botanic Garden, Edinburgh
19. The New Town Gardens
20. Callendar Park
21. Dunmore Park
22. The Pineapple
23. Aberdour Castle
24. Balbirnie
25. Culross Abbey House
26. Dunimarle Castle
27. Dysart House And Ravenscraig Park
28. Falkland Palace
29. Fordell Castle
30. Hill of Tarvit (Wemyss Hall)
31. House of Falkland
32. Lahill
33. Leslie House
34. Melville House
35. Naughton
36. Pittencrieff Park
37. Raith Park And Beveridge Park
38. St Colme
39. The Murrel
40. Tulliallan
41. Valleyfield

42. Wemyss Castle
43. Colzium Lennox Estate
44. Abercairny
45. Aberuchill Castle
46. Balmanno
47. Battleby
48. Blair Adam
49. Bolfracks
50. Braco
51. Branklyn
52. Castle Menzies
53. Cleish Castle
54. Cluny House
55. Craighall Rattray
56. Drummond Castle
57. Dunira
58. Dunkeld House
59. Dupplin Castle
60. Errol Park
61. Fingask Castle
62. Glendoick
63. Gleneagles Hotel And Golf Courses
64. Grantully Castle
65. Inchyra
66. Invermay
67. Keillour Castle
68. Kinfauns Castle
69. Kinross House
70. Megginch Castle
71. Meikleour
72. Methven Castle
73. Monzie Castle
74. Murthly Castle
75. Ochtertyre
76. Rossie Priory
77. Scone Palace
78. Stobhall
79. Taymouth Castle
80. The Hermitage
81. Blair Drummond
82. Cardross House
83. Cowane's Hospital

84. Doune Park
 85. Gargunnoch House
 86. Inchmahome Priory
 87. Keir
 88. Kings Knot
 89. Kippenross
 90. Rednock House
 91. The Roman Camp
 92. Touch
 93. University of Stirling (Airthrey Castle)
 94. Harburn House
 95. Hopetoun House
 96. House of The Binns
-  Wild Land
7. Ben More, Ben Ledi
 12. Ben Lawers

A	26/02/26	SH	AE	BF	First Issue.
REV	DATE	BY	CHK	APR	REVISION HISTORY



ISSUE DETAILS

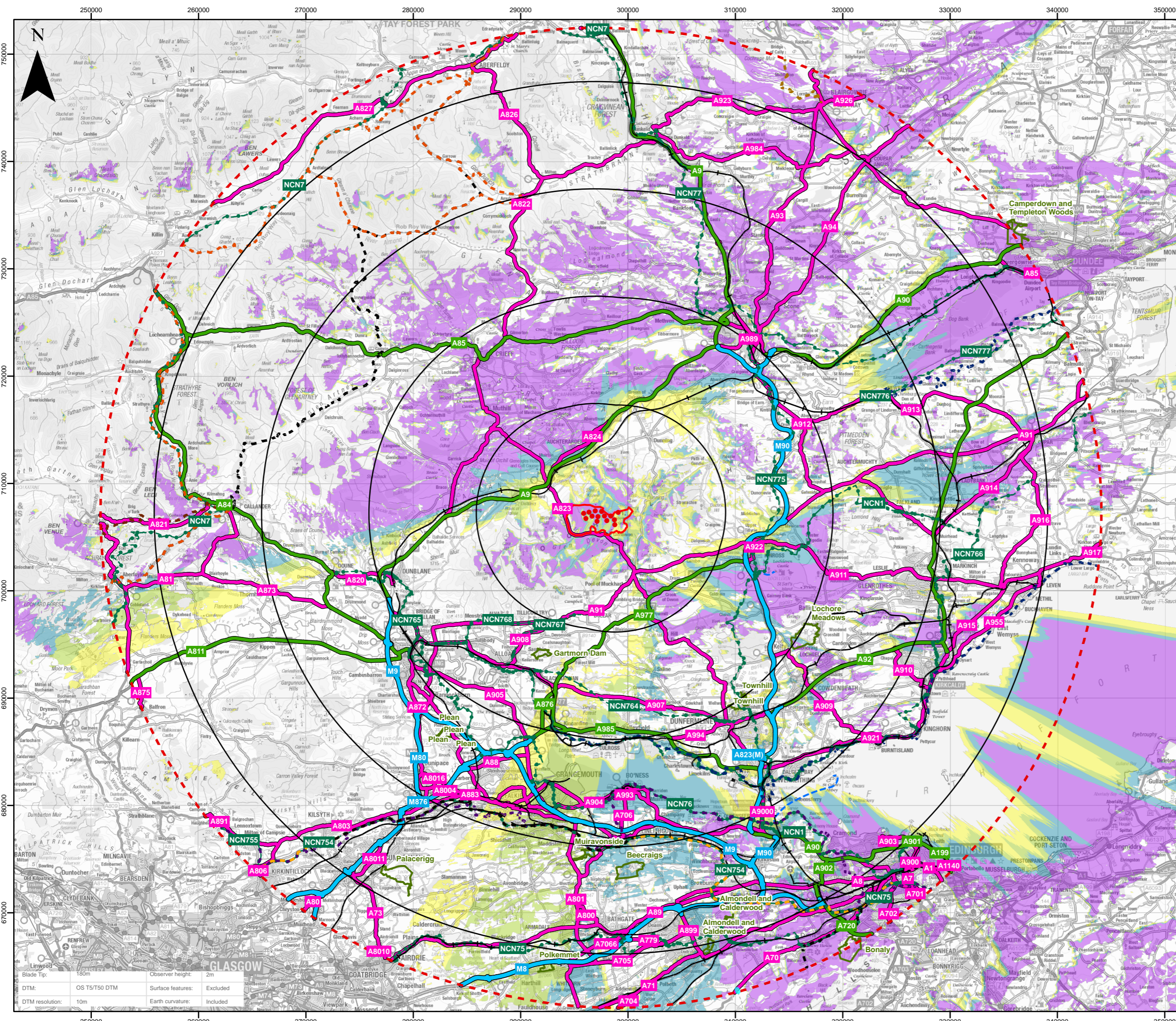
DRAWN BY: SH	CHECKED: AE
APPROVED: BF	DATE: 26/02/2026
REVISION: A	SHEET: 1 OF 1
PAGE SIZE: A3	STATUS: DRAFT
DATUM: OSGB 1936	PROJECTION: TM

© Crown Copyright 2026. All rights reserved.
Ordnance Survey Licence AC0000808122.

TITLE
LANDSCAPE
FIGURE 5.5B DESIGNATIONS KEY

PROJECT
Green Knowes WF Repowering Scoping

DRAWING NUMBER
428.013438.00001.0021.0



LEGEND

- Site Boundary
- Proposed Turbine
- 10 km Radii
- 45 km Study Area
- + Railway
- Long Distance Walking Routes**
- Catheran Way
- Cross Borders Drove Route
- Fife Coastal Path
- Forth & Clyde and Union Canal Towpaths
- John Muir Way
- Rob Roy Way
- Scottish National Trail
- The Great Trossachs Path
- National Cycle Route
- Regional Cycle Route
- Ferry Route
- Motorway
- Primary Road
- A Road
- Country Park

Blade Tip Zone of Theoretical Visibility (ZTV) Bare Earth

Number of Blade Tips Theoretically Visible

- 1 - 4
- 5 - 8
- 9 - 12
- 13 - 14

NOTE: See Figure 5.3 for ZTV Information

A	05/11/25	SH	AE	BF	First Issue.
REV	DATE	BY	CHK	APR	REVISION HISTORY

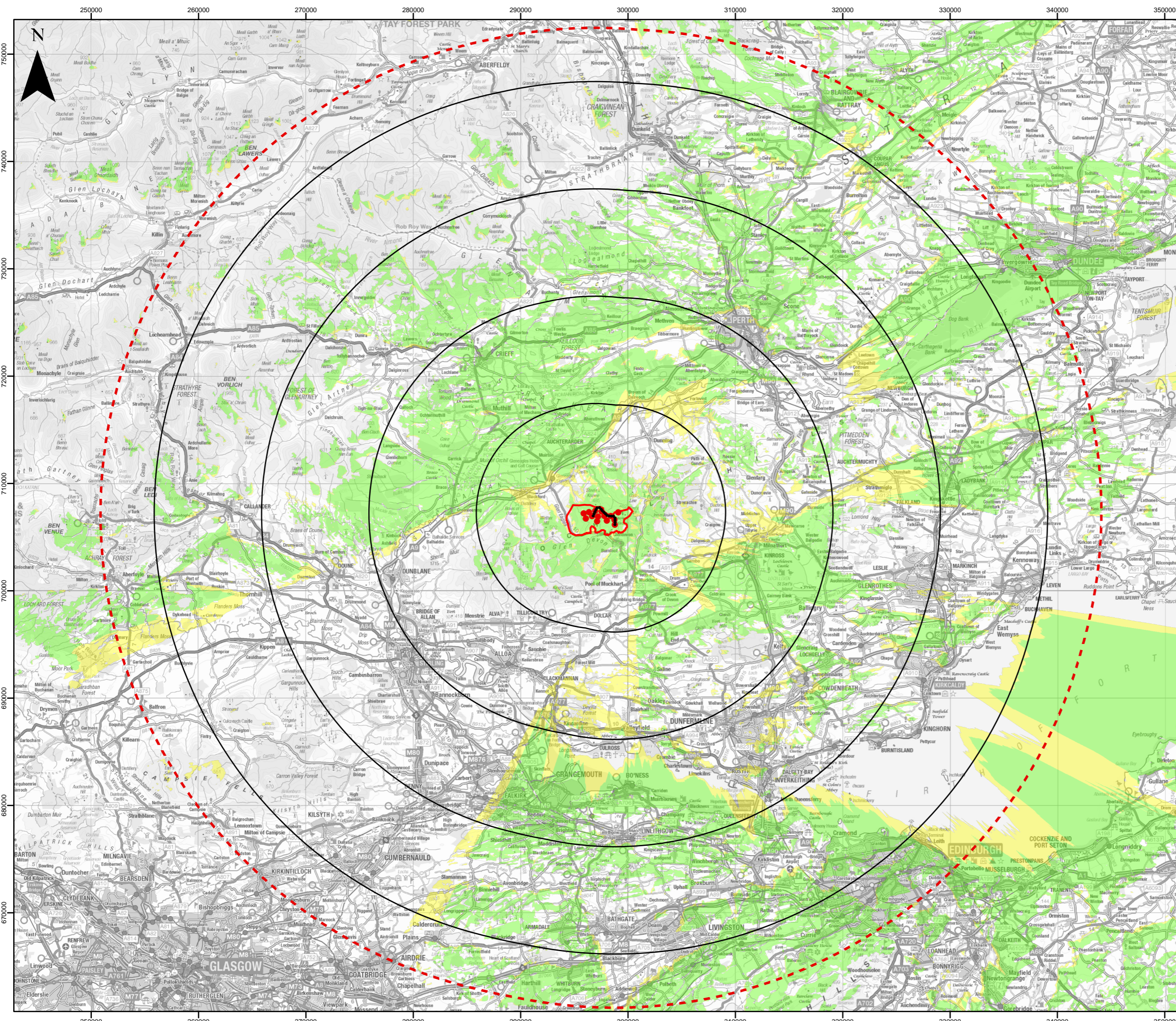


ISSUE DETAILS	
DRAWN BY: SH	CHECKED: AE
APPROVED: BF	DATE: 20/11/2025
REVISION: A	SHEET: 1 OF 1
PAGE SIZE: A3	STATUS: DRAFT
DATUM: OSGB 1936	PROJECTION: TM
SCALE: 1:330,000	
© Crown Copyright 2025. All rights reserved. Ordnance Survey Licence AC0000808122.	

TITLE
 LANDSCAPE
 FIGURE 5.6 BLADE TIP ZTV
 WITH VISUAL RECEPTORS
 PROJECT
 Green Knowes WF Repowering Scoping
DRAWING NUMBER
 428.013438.00001.0017.0

Blade Tip: 180m	Observer height: 2m
DTM: OS T5/T50 DTM	Surface features: Excluded
DTM resolution: 10m	Earth curvature: Included

Contains public sector information licensed under the Open Government Licence v3.0. Copyright Scottish Government, contains Ordnance Survey data © Crown copyright and database right (2025). National Cycle Route data supplied by Sustrans contains Ordnance Survey data © Crown copyright and database rights (2025). The dataset also contains OpenStreetMap contributions for Northern Ireland.



LEGEND

- Site Boundary
- Proposed Turbine
- 10 km Radii
- 45 km Study Area
- Green Knowes Operational Turbine
- Green Knowes Repowering Theoretically Visible
- Green Knowes Operational Theoretically Visible
- Combined Theoretical Visibility

Op. Blade Tip:	95m	Observer height:	2m
Prop. Blade Tip:	180m	Surface features:	Excluded
DTM:	OS T5/T50 DTM	Earth curvature:	Included
DTM resolution:	10m	Note: See Figure 5.3 for ZTV information	

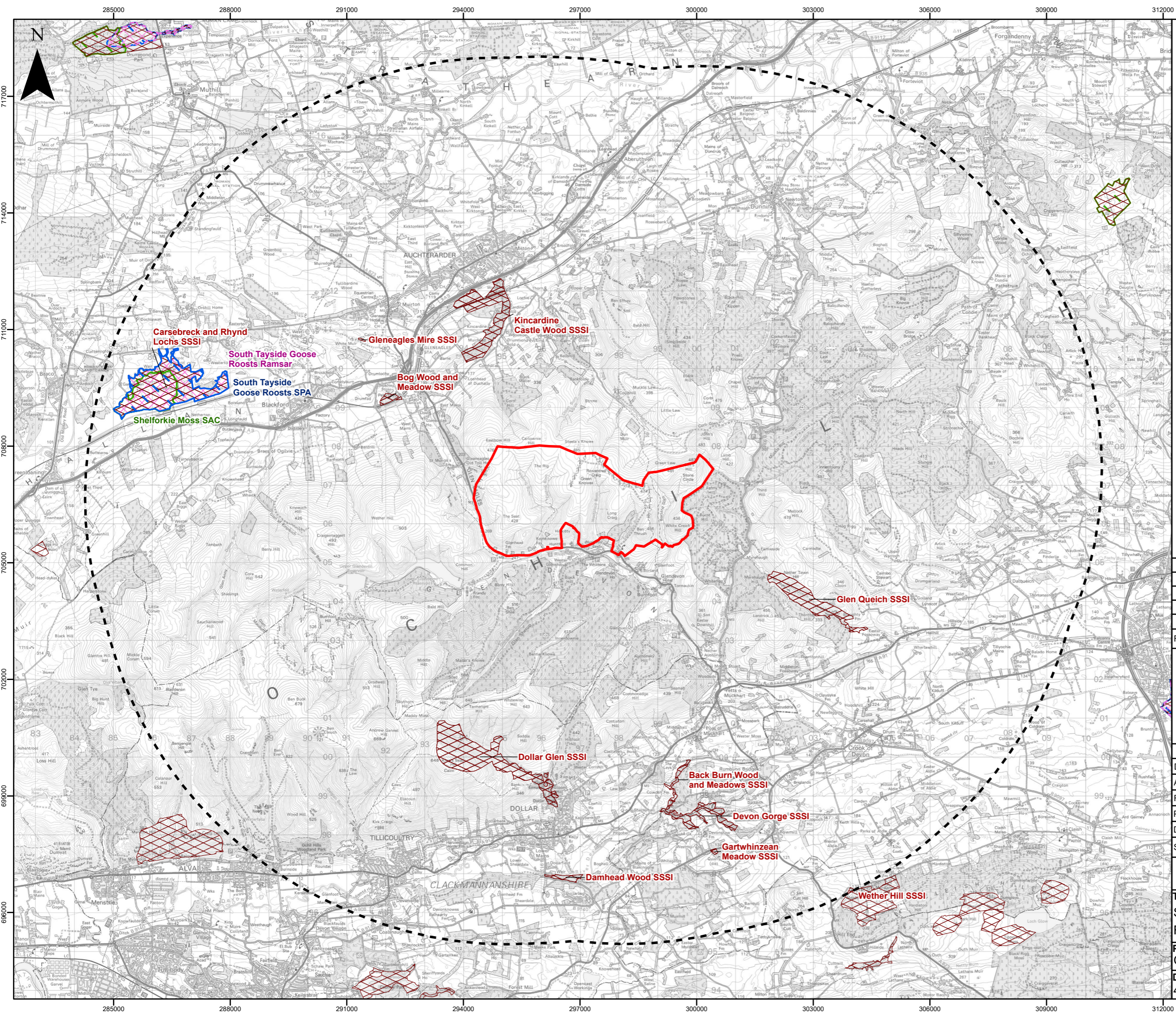
A	05/11/25	SH	AE	BF	First Issue.
REV	DATE	BY	CHK	APR	REVISION HISTORY



ISSUE DETAILS	
DRAWN BY: SH	CHECKED: AE
APPROVED: BF	DATE: 20/11/2025
REVISION: A	SHEET: 1 OF 1
PAGE SIZE: A3	STATUS: DRAFT
DATUM: OSGB 1936	PROJECTION: TM
SCALE: 1:330,000	

© Crown Copyright 2025. All rights reserved.
Ordnance Survey Licence AC0000808122.

TITLE
LANDSCAPE
FIGURE 5.7 COMPARATIVE ZTV
PROJECT
Green Knowes WF Repowering Scoping
DRAWING NUMBER
428.013438.00001.0011.0



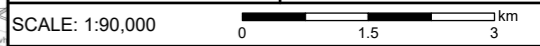
- LEGEND**
- Site Boundary
 - Site Boundary 10 km Buffer
 - Special Area of Conservation (SAC)
 - Special Protection Area (SPA)
 - Site of Special Scientific Interest (SSSI)
 - Ramsar

Note:
Only ecological designations within the 10km buffer are labelled.

A	26/01/26	MA	xx	xx	First Issue.
REV	DATE	BY	CHK	APR	REVISION HISTORY



ISSUE DETAILS	
DRAWN BY: MA	CHECKED: NAME
APPROVED: NAME	DATE: 26/01/2026
REVISION: A	SHEET: 1 OF 1
PAGE SIZE: A3	STATUS: DRAFT
DATUM: OSGB 1936	PROJECTION: TM

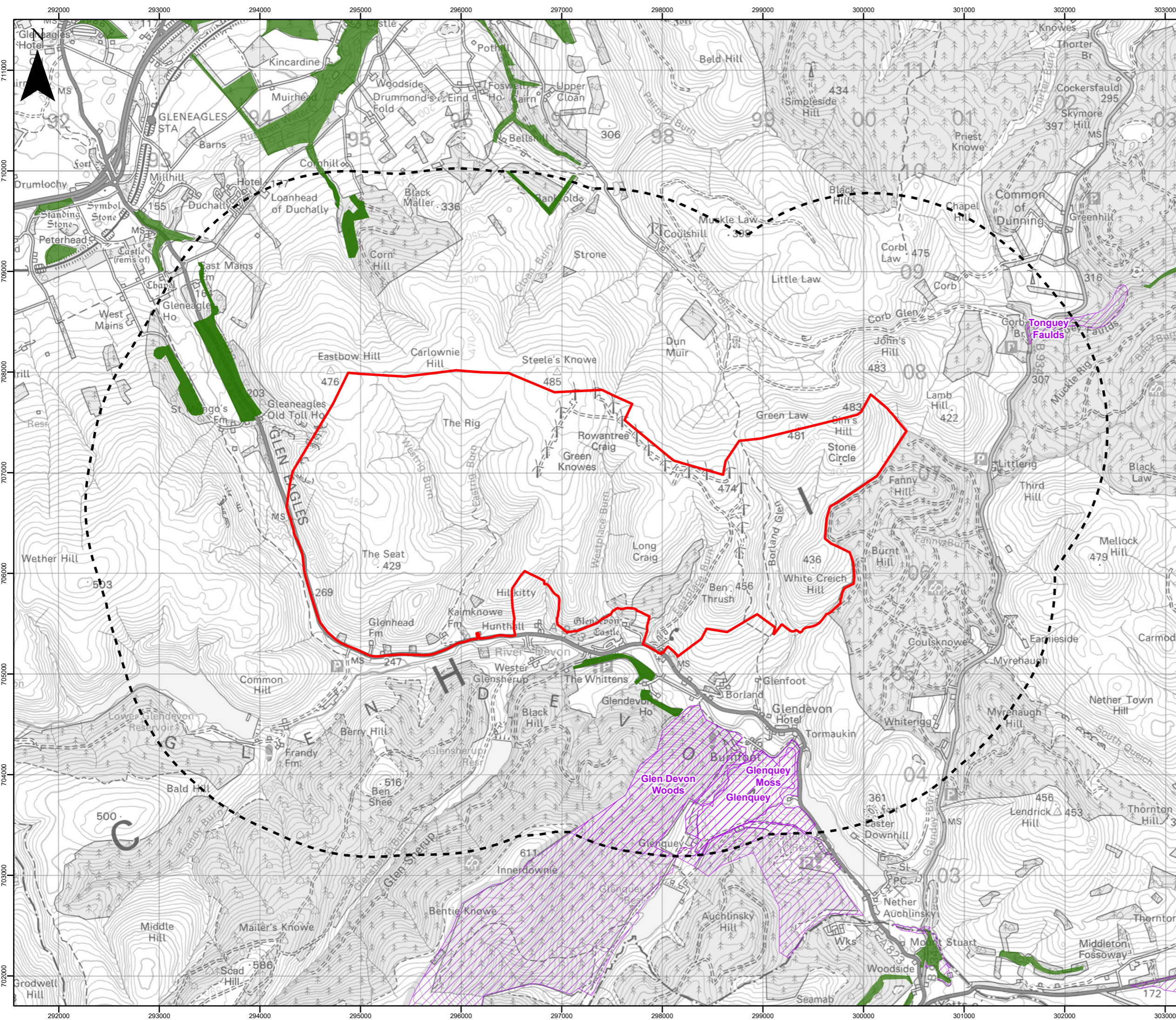


© Crown Copyright 2026. All rights reserved.
Ordnance Survey Licence AC0000808122.

TITLE
Statutory Designated Sites
Figure 7.1

PROJECT
Green Knowes WF Repowering Scoping

DRAWING NUMBER
428.013438.00001.0001.0



- LEGEND**
- Site Boundary
 - Site Boundary 2 km Buffer
 - Local Nature Conservation Site
 - Ancient Woodland Inventory

Note:
Only ecological designations within the 2km buffer are labelled.

REV	DATE	BY	CHK	APR	REVISION HISTORY
A	26/01/26	MA	xx	xx	First Issue.



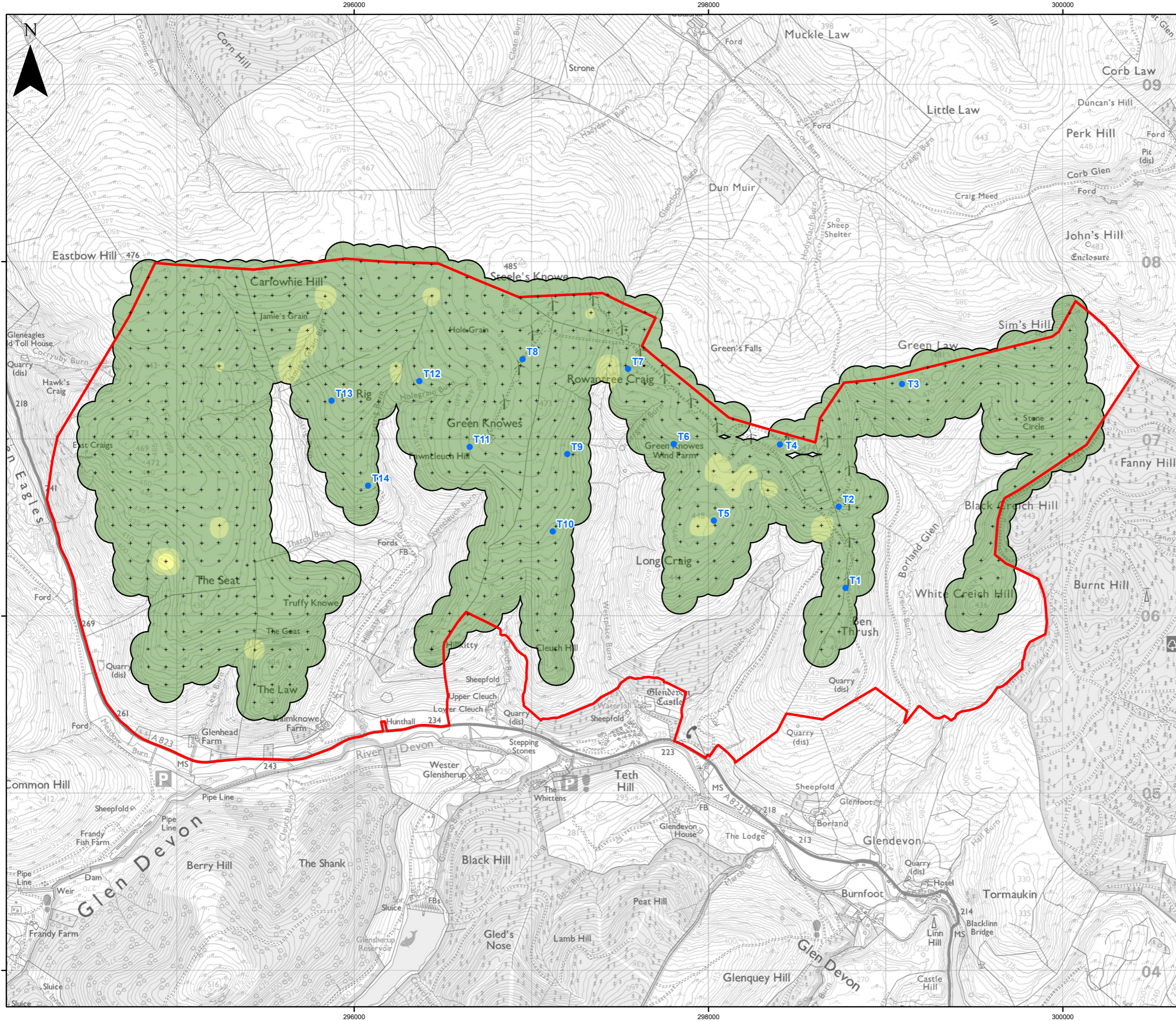
ISSUE DETAILS	
DRAWN BY: MA	CHECKED: NAME
APPROVED: NAME	DATE: 26/01/2026
REVISION: A	SHEET: 1 OF 1
PAGE SIZE: A3	STATUS: DRAFT
DATUM: OSGB 1936	PROJECTION: TM
SCALE: 1:35,000	0 0.5 1 km

© Crown Copyright 2026. All rights reserved.
Ordnance Survey Licence AC0000808122.

TITLE
Non - Statutory Designated Sites
Figure 7.2

PROJECT
Green Knowes WF Repowering Scoping

DRAWING NUMBER
428.013438.00001.0002.0



LEGEND

- Site Boundary
- Proposed Turbine Layout
- Peat Probe Location

Peat Depth (m)

- < 0.5
- 0.5 - 1
- 1 - 1.5
- 1.5 - 2
- 2 - 3
- 3 - 4
- 4 - 5
- > 5

C	10/04/2026	SH	GG	BF	Third Issue
B	05/12/2025	MC	GG	BF	Second Issue.
A	10/04/2026	QF	MM	DN	First Issue.
REV	DATE	BY	CHK	APR	REVISION HISTORY

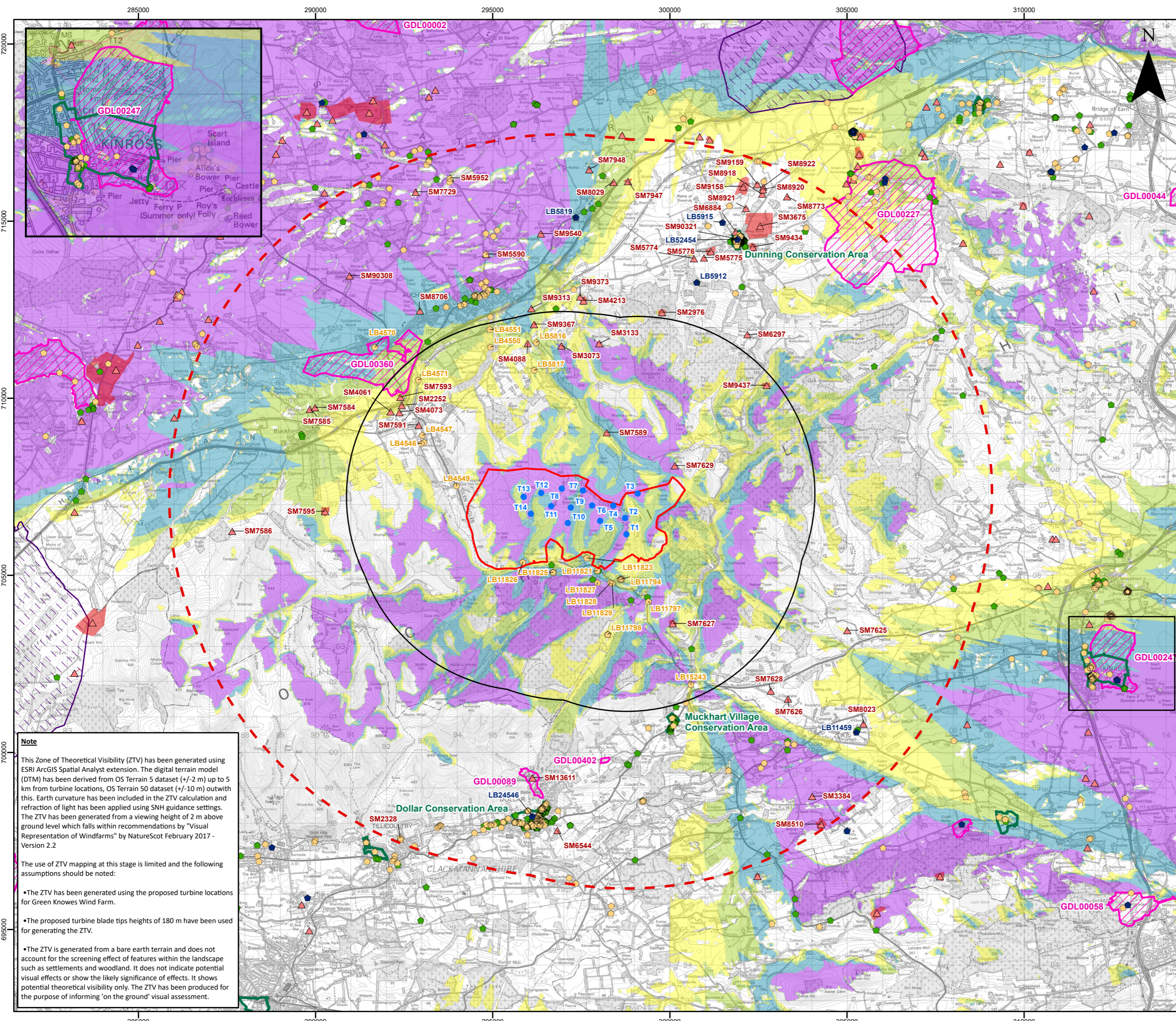
ScottishPower Renewables

ISSUE DETAILS	
DRAWN BY: SH	CHECKED: GG
APPROVED: BF	DATE: 10/04/2026
REVISION: C	SHEET: 1 OF 1
PAGE SIZE: A3	STATUS: DRAFT
DATUM: OSGB 1936	PROJECTION: TM
SCALE: 1:20,000	
© Crown Copyright 2026. All rights reserved. Ordnance Survey Licence AC0000808122.	

TITLE
GEOLOGY, PEAT, HYDROLOGY & SOILS
FIGURE 8.1 PEAT DEPTH

PROJECT
Green Knowes WF Repowering Scoping

DRAWING NUMBER
428.013438.00001.0020.1



LEGEND

- Site Boundary
- Proposed Turbine
- Proposed Turbine 5 km Buffer
- Study Area (Proposed Turbine 10 km Buffer)

Listed Building (Category)

- A
- B
- C
- Scheduled Monument (Centre Point)
- Scheduled Monument
- Conservation Area
- Inventory Garden and Designed Landscape
- Inventory Battlefield

Blade Tip Zone of Theoretical Visibility (ZTV) Bare Earth

Number of Blade Tips Theoretically Visible

- 1 - 4
- 5 - 8
- 9 - 12
- 13 - 14

Note:
 Scheduled Monuments, Inventory Garden and Designed Landscapes, Inventory Battlefields, Conservation Areas, and Category A Listed Building's Only Labelled Out to the Proposed Turbine 10 km Buffer.
 Category B Listed Building's Only Labelled Out to Turbine Location 5 km Buffer.

REV	DATE	BY	CHK	APR	REVISION HISTORY
B	26/02/26	MC	GG	BF	Second Issue.
A	05/11/25	SH	GM	BF	First Issue.



ISSUE DETAILS	
DRAWN BY: MC	CHECKED: GG
APPROVED: BF	DATE: 26/02/2026
REVISION: B	SHEET: 1 OF 1
PAGE SIZE: A3	STATUS: DRAFT
DATUM: OSGB 1936	PROJECTION: TM

SCALE: 1:100,000

© Crown Copyright 2026. All rights reserved. Ordnance Survey Licence AC0000808122. © Historic Environment Scotland - Scottish Charity No. SC045925 © Crown copyright and database right [2025]

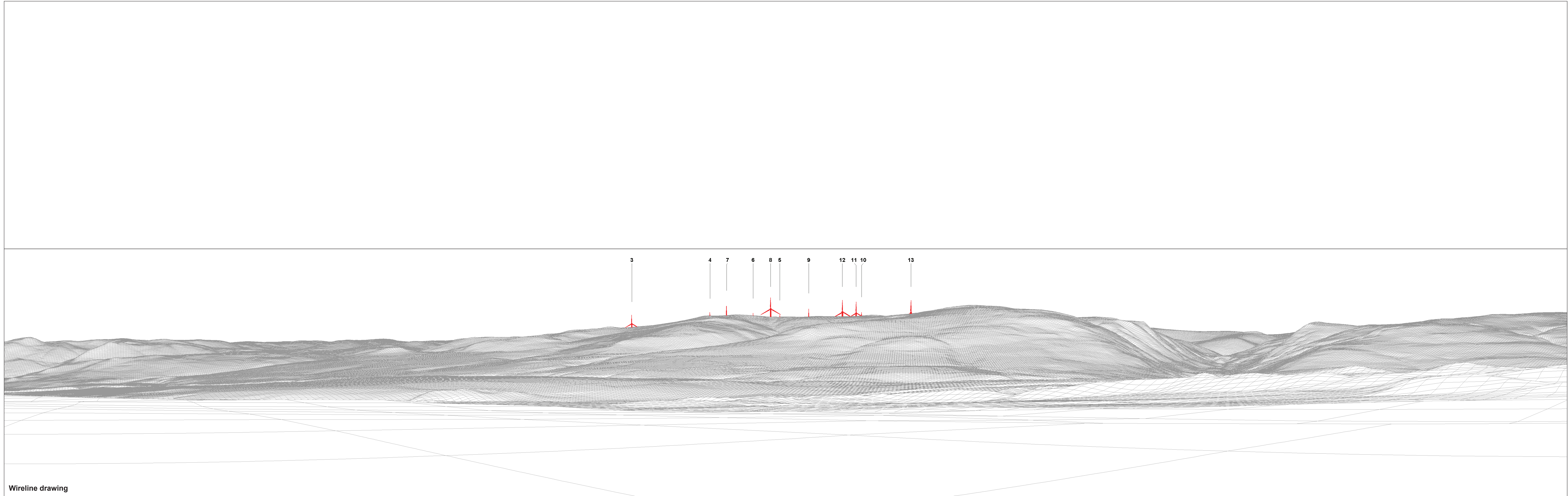
TITLE
 CULTURAL HERITAGE
 FIGURE 9.1 BLADE TIP ZTV
 WITH DESIGNATIONS
PROJECT
 Green Knowes WF Repowering Scoping
DRAWING NUMBER
 428.013438.00001.0025.1

Note

This Zone of Theoretical Visibility (ZTV) has been generated using ESRI ArcGIS Spatial Analyst extension. The digital terrain model (DTM) has been derived from OS Terrain 50 dataset (+/-2 m) up to 5 km from turbine locations, OS Terrain 50 dataset (+/-10 m) outwith this. Earth curvature has been included in the ZTV calculation and refraction of light has been applied using SNH guidance settings. The ZTV has been generated from a viewing height of 2 m above ground level which falls within recommendations by "Visual Representation of Windfarms" by NatureScot February 2017 - Version 2.2

The use of ZTV mapping at this stage is limited and the following assumptions should be noted:

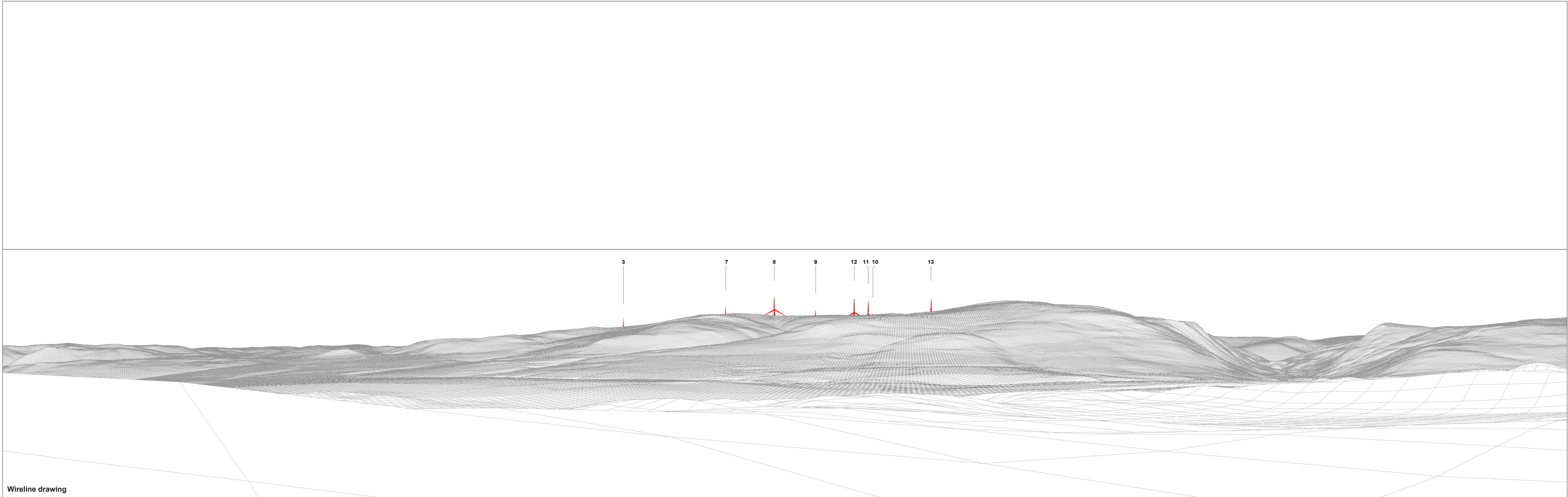
- The ZTV has been generated using the proposed turbine locations for Green Knowes Wind Farm.
- The proposed turbine blade tips heights of 180 m have been used for generating the ZTV.
- The ZTV is generated from a bare earth terrain and does not account for the screening effect of features within the landscape such as settlements and woodland. It does not indicate potential visual effects or show the likely significance of effects. It shows potential theoretical visibility only. The ZTV has been produced for the purpose of informing 'on the ground' visual assessment.



Wireline drawing

OS reference: 291672 E 711446 N
Eye level: 163.2 mAOD
Direction of view: 128°
Nearest turbine: 5.96 km

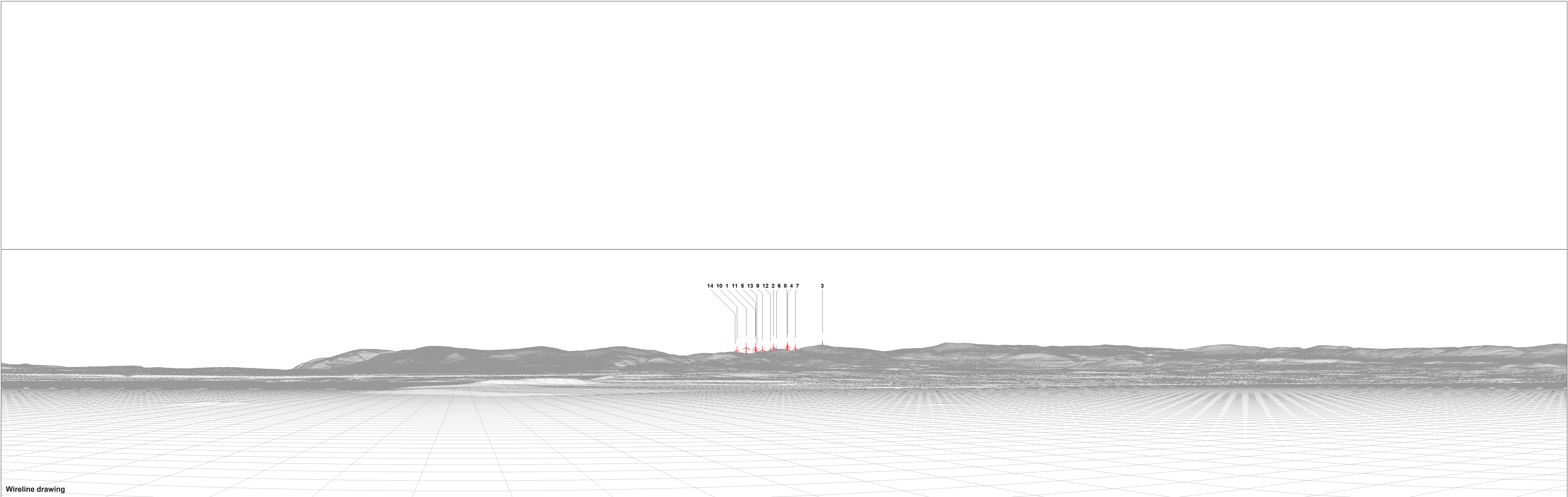
Horizontal field of view: 90° (cylindrical projection)
Principal distance: 522 mm
Paper size: 841 x 297 mm (half A1)
Correct printed image size: 820 x 130 mm



Wireline drawing

OS reference: 292172 E 711101 N
Eye level: 145.6 mAOD
Direction of view: 128°
Nearest turbine: 5.37 km

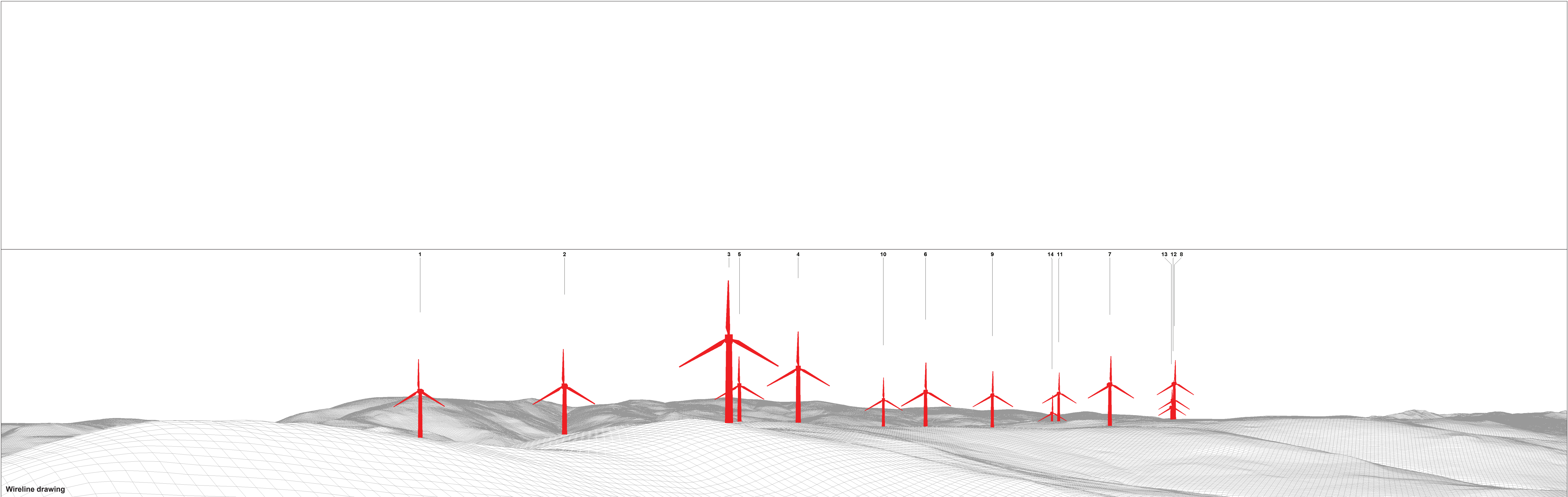
Horizontal field of view: 90° (cylindrical projection)
Principal distance: 522 mm
Paper size: 841 x 297 mm (half A1)
Correct printed image size: 820 x 130 mm



Wireline drawing

OS reference: 313715 E 701785 N
Eye level: 119.1 mAOD
Direction of view: 288.5°
Nearest turbine: 15.57 km

Horizontal field of view: 90° (cylindrical projection)
Principal distance: 522 mm
Paper size: 841 x 297 mm (half A1)
Correct printed image size: 820 x 130 mm



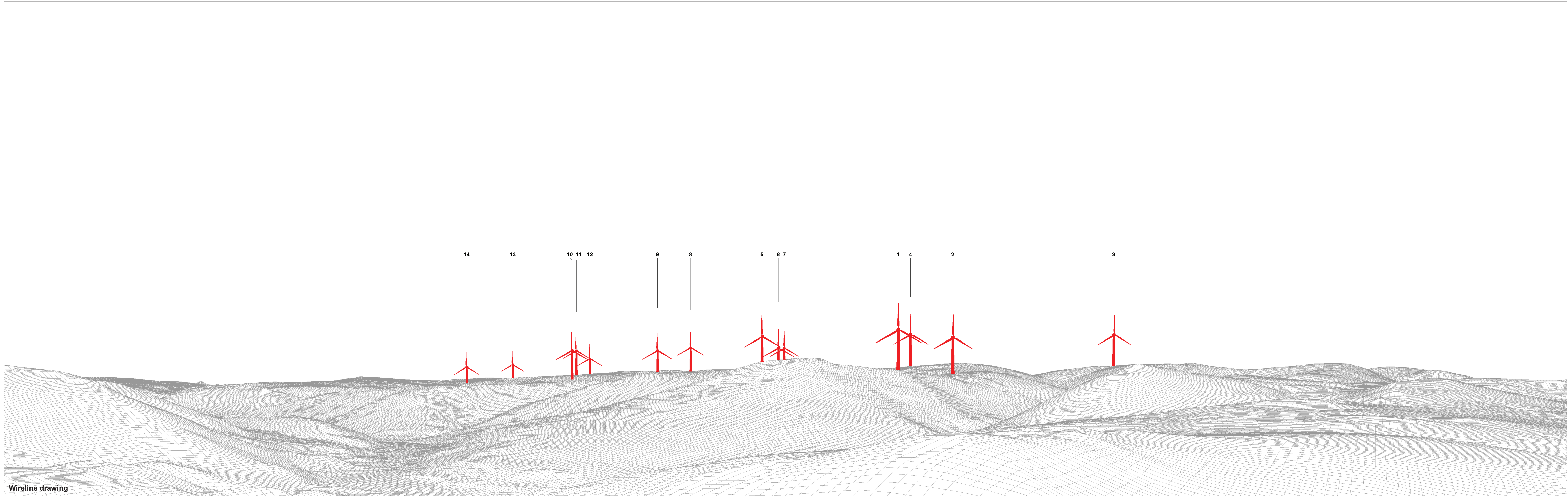
Wireline drawing

OS reference: 300139 E 708104 N
Eye level: 430.4 mAOD
Direction of view: 236°
Nearest turbine: 1.31 km

Horizontal field of view: 90° (cylindrical projection)
Principal distance: 522 mm
Paper size: 841 x 297 mm (half A1)
Correct printed image size: 820 x 130 mm

Viewpoint 4: John's Hill
Green Knowes

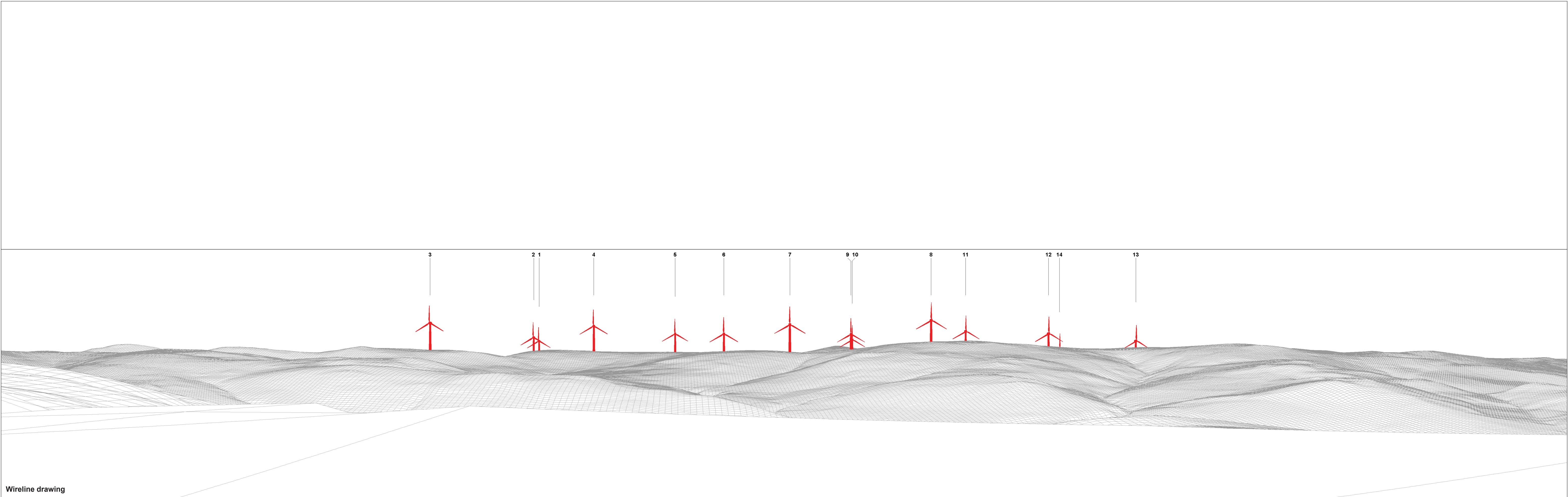
© Crown copyright. All rights reserved (2026). Licence number AC0000808122



Wireline drawing

OS reference: 300081 E 703649 N
Eye level: 361.8 mAOD
Direction of view: 326°
Nearest turbine: 2.83 km

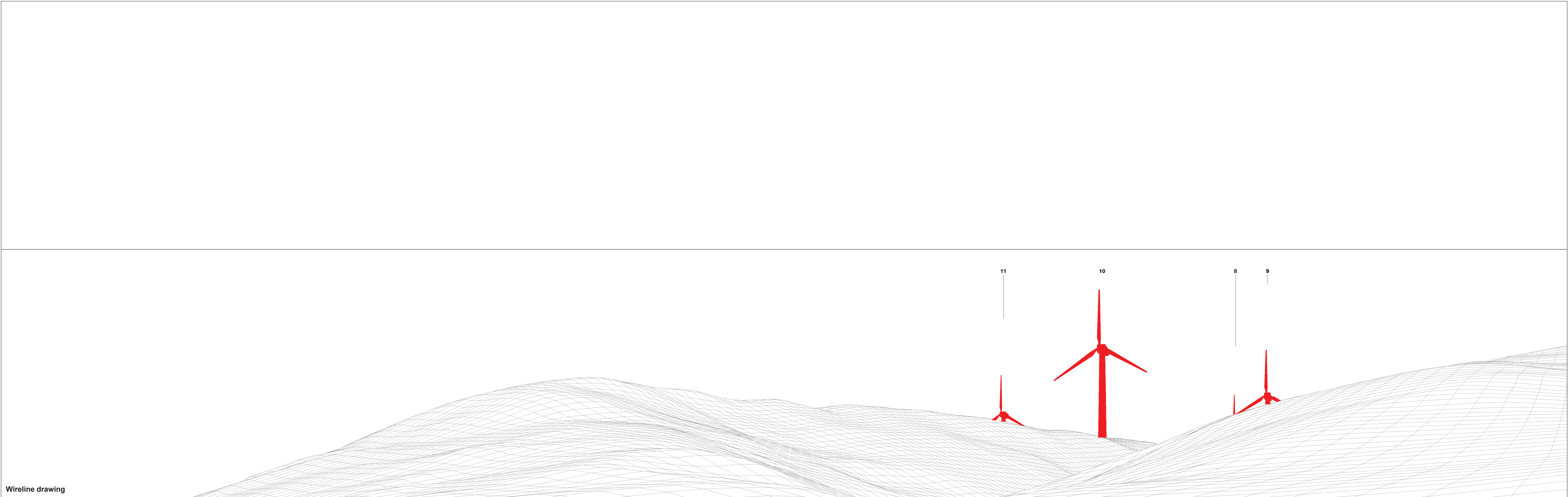
Horizontal field of view: 90° (cylindrical projection)
Principal distance: 522 mm
Paper size: 841 x 297 mm (half A1)
Correct printed image size: 820 x 130 mm



Wireline drawing

OS reference: 298007 E 711554 N
 Eye level: 358.3 mAOD
 Direction of view: 186°
 Nearest turbine: 4.18 km

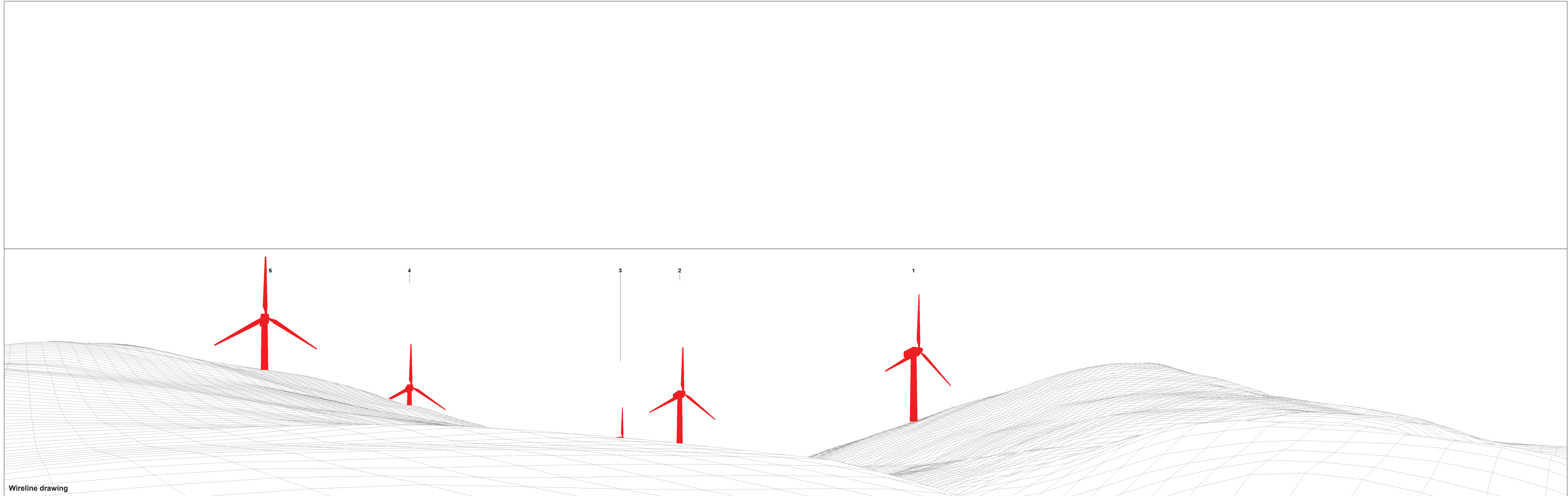
Horizontal field of view: 90° (cylindrical projection)
 Principal distance: 522 mm
 Paper size: 841 x 297 mm (half A1)
 Correct printed image size: 820 x 130 mm



Wireline drawing

OS reference: 297727 E 705323 N
Eye level: 225.9 mAOD
Direction of view: 314°
Nearest turbine: 1.25 km

Horizontal field of view: 90° (cylindrical projection)
Principal distance: 522 mm
Paper size: 841 x 297 mm (half A1)
Correct printed image size: 820 x 130 mm



Wireline drawing

OS reference: 297727 E 705323 N
Eye level: 225.9 mAOD
Direction of view: 44°
Nearest turbine: 1.25 km

Horizontal field of view: 90° (cylindrical projection)
Principal distance: 522 mm
Paper size: 841 x 297 mm (half A1)
Correct printed image size: 820 x 130 mm

Viewpoint 7: Glendevon Castle
Green Knowles