

EAST ANGLIA THREE

Notice to Mariners

NTM-055/2025

Export Cable Guard Vessel Deployment

Prepared by:	Checked by:	Approved by:
Marine Coordinator	Marine Assurance Manager	Offshore Installation Manager

TABLE OF CONTENTS

1. MARINE ACTIVITIES	3
1.1. Summary:	3
1.2. Activity Description:	3
1.3. Program Schedule:	3
1.4. Vessel Details:	4
2. ACTIVITY AREA.....	7
2.1. Coordinates of the East Anglia 3 Export Cable Route:.....	7
2.2. Approximate working areas of Guard Vessels along the Export Cable Corridor.....	11
3. PROJECT CONTACT DETAILS.....	12
3.1. Site Management:	12
3.2. Emergency Contact:.....	12
3.3. Marine Management.....	12
4. NOTICE TO MARINERS' DISTRIBUTION LIST	13

1. MARINE ACTIVITIES

1.1. Summary:

Please be advised that NKT will be deploying Guard Vessels along the East Anglia THREE Offshore Export Cable Corridor as detailed in Section 2.2 of this document for protection of the pre lay mattresses and to protect the cable bundle from the start of cable lay until the cable is adequately protected by means of trenching or rock placement.

All Marine traffic is advised to exercise caution when the vessels are operating in the locations set out in section 2.1.

1.2. Activity Description:

The primary purpose of the guard vessels is to protect the exposed cable along the East Anglia 3 Export Cable corridor by monitoring and issuing warnings to marine traffic operating within 6Nm of the construction area with a Closest Point of Approach (CPA) < 1.5Nm. More specifically, the focus will be on those vessels with potential to be engaging in bottom contact activities such as fishing and anchoring, as these activities pose a risk not only to the exposed cable bundle but also to the vessels themselves.

The guard vessels will be clearly marked and display a highly visible "GUARD" sign on each side. Exchange of vessels on site will ensure the relevant section of cable is never left unguarded.

In sections where cable protection has been completed, guard vessels will be released and sections will be opened up for fishing or use of other equipment with seabed intervention. This may not necessarily be in a sequential order from shoreside outwards.

1.3. Program Schedule:

The vessels will operate 24/7, in all but extreme weather.

Approximately 7 guard vessels will be used in the period from 20/05/2025 until completion. Durations at each location will depend on progress of the cable installation, trenching and rock placement operations. Not all the vessels are expected to be used concurrently.

Any changes of the guard Vessels and completion of works will be notified via future Notice to Mariners.

All vessels are required to monitor VHF Channel 16 and VHF DSC Channel 70 continuously throughout the operation.

Mariners are advised that approximately 100 meters of Export Cable has been surfaced laid between KP4.97 and KP5.061 (positions in the table below), This cable will be either buried or protected by remedial mattress protection over the next two months, more information will follow via future notice to mariners.


Surfaced Laid Export Cable				
KP	Latitude (DD MM.MMM)	Longitude (DDD MM.MMM)	Easting	Northing
4.947	52° 00.024' N	001° 29.152' E	396058.59	5762164.82
5.061	52° 00.036' N	001° 29.251' E	396171.00	5762185.85

1.4. Vessel Details:


Vessel Details	
Name of vessel:	GV Reul Na Mara
Call Sign:	GGKA
MMSI No:	234671000
On Board Contact Details:	Phone: + 44 (0)1449 700 236 Email:gvreulnamara@gmail.com
Port of operation:	Lowestoft




Vessel Details	
Name of vessel:	GV Adventure
Call Sign:	2IFE4
MMSI No:	235109237
On Board Contact Details:	Phone +44 (0) 7842585022 Email: gvadventure3@gmail.com
Port of operation:	Fraserburgh




Vessel Details	
Name of vessel:	GV Arina
Call Sign:	MVMV7
MMSI No:	234002000
On Board Contact Details:	Phone: +44 (0) 1346 410 489 Email: gvarinalk80@gmail.com
Port of operation:	Fraserburgh




Vessel Details	
Name of vessel:	GV Resolution
Call Sign:	MBCZ5
MMSI No:	235002260
On Board Contact Details:	Phone: +0044 1947 660 301 Email: gvresolution@gmail.com
Port of operation:	Lowestoft




Vessel Details	
Name of vessel:	GV Accord
Call Sign:	2WEM
MMSI No:	234219000
On Board Contact Details:	Phone: +34695736648 Email: gvaccordn262@gmail.com
Port of operation:	Fraserburgh



Vessel Details	
Name of vessel:	GV Genesis
Call Sign:	MSDK3
MMSI No:	235000097
On Board Contact Details:	Phone: +0044 1261 455 437 Email: gvgenesis505@gmail.com
Port of operation:	Fraserburgh



Vessel Details	
Name of vessel:	GV Renown
Call Sign:	MEX09
MMSI No:	232021109
On Board Contact Details:	Phone: +0044 28 4114 0716 Email: Renownn1063@gmail.com
Port of operation:	Fraserburgh



2. ACTIVITY AREA

2.1. Coordinates of the East Anglia 3 Export Cable Route:

KP	WGS84		Decimal Degrees	
	Latitude (DD MM.MMM)	Longitude (DDD MM.MMM)	Latitude (°N)	Longitude (°E)
0	52° 00.114' N	001° 25.223' E	52.001905	1.420386
1	51° 59.769' N	001° 25.894' E	51.996155	1.431569
2	51° 59.674' N	001° 26.663' E	51.994566	1.444391
3	51° 59.878' N	001° 27.472' E	51.997959	1.457874
4	51° 59.939' N	001° 28.337' E	51.998979	1.472280
5	52° 00.030' N	001° 29.198' E	52.000493	1.486634
6	52° 00.163' N	001° 30.042' E	52.002723	1.500705
7	52° 00.408' N	001° 30.821' E	52.006792	1.513675
8	52° 00.643' N	001° 31.605' E	52.010717	1.526746
9	52° 01.012' N	001° 32.240' E	52.016872	1.537339
10	52° 01.393' N	001° 32.859' E	52.023222	1.547654
11	52° 01.783' N	001° 33.463' E	52.029725	1.557713
12	52° 02.179' N	001° 34.055' E	52.036309	1.567588
13	52° 02.569' N	001° 34.656' E	52.042819	1.577600
14	52° 02.936' N	001° 35.295' E	52.048941	1.588253
15	52° 03.348' N	001° 35.859' E	52.055798	1.597651
16	52° 03.731' N	001° 36.470' E	52.062189	1.607837
17	52° 04.135' N	001° 37.044' E	52.068915	1.617404
18	52° 04.340' N	001° 37.824' E	52.072326	1.630393
19	52° 04.488' N	001° 38.664' E	52.074806	1.644404
20	52° 04.585' N	001° 39.517' E	52.076415	1.658611
21	52° 04.714' N	001° 40.344' E	52.078559	1.672397
22	52° 04.918' N	001° 41.151' E	52.081968	1.685853
23	52° 05.118' N	001° 41.962' E	52.085308	1.699358
24	52° 05.312' N	001° 42.779' E	52.088537	1.712976
25	52° 05.512' N	001° 43.592' E	52.091875	1.726526
26	52° 05.862' N	001° 44.232' E	52.097705	1.737206
27	52° 06.159' N	001° 44.943' E	52.102657	1.749049
28	52° 06.416' N	001° 45.712' E	52.106935	1.761863
29	52° 06.690' N	001° 46.466' E	52.111500	1.774439
30	52° 06.955' N	001° 47.229' E	52.115911	1.787158

31	52° 07.254' N	001° 47.957' E	52.120895	1.799288
32	52° 07.525' N	001° 48.707' E	52.125420	1.811784
33	52° 07.764' N	001° 49.489' E	52.129402	1.824818
34	52° 08.028' N	001° 50.254' E	52.133795	1.837560
35	52° 08.286' N	001° 51.023' E	52.138101	1.850376
36	52° 08.357' N	001° 51.023' E	52.139285	1.864612
37	52° 08.477' N	001° 51.877' E	52.141291	1.878848
38	52° 08.618' N	001° 52.731' E	52.143640	1.892946
39	52° 08.744' N	001° 53.577' E	52.145736	1.907148
40	52° 08.815' N	001° 54.429' E	52.146916	1.921633
41	52° 08.935' N	001° 55.298' E	52.148922	1.935831
42	52° 09.204' N	001° 56.150' E	52.153404	1.948124
43	52° 09.466' N	001° 56.887' E	52.157770	1.960850
44	52° 09.659' N	001° 57.651' E	52.160987	1.974467
45	52° 09.588' N	001° 58.468' E	52.159804	1.988729
46	52° 09.724' N	001° 59.324' E	52.162070	2.002656
47	52° 09.895' N	002° 00.159' E	52.164914	2.016524
48	52° 10.068' N	002° 00.991' E	52.167804	2.030367
49	52° 10.224' N	002° 01.822' E	52.170395	2.044364
50	52° 10.395' N	002° 02.662' E	52.173254	2.058225
51	52° 10.562' N	002° 03.493' E	52.176040	2.072109
52	52° 10.732' N	002° 04.327' E	52.178875	2.085986
53	52° 10.917' N	002° 05.159' E	52.181942	2.099729
54	52° 11.113' N	002° 05.984' E	52.185211	2.113353
55	52° 11.385' N	002° 06.801' E	52.189746	2.125968
56	52° 11.536' N	002° 07.558' E	52.192271	2.139567
57	52° 11.509' N	002° 08.374' E	52.191819	2.154155
58	52° 11.599' N	002° 09.249' E	52.193312	2.168455
59	52° 11.684' N	002° 10.107' E	52.194731	2.182814
60	52° 11.891' N	002° 10.969' E	52.198181	2.196264
61	52° 12.153' N	002° 11.776' E	52.202550	2.209047
62	52° 12.458' N	002° 12.543' E	52.207640	2.221095
63	52° 12.724' N	002° 13.266' E	52.212068	2.233807
64	52° 12.926' N	002° 14.028' E	52.215441	2.247365
65	52° 13.124' N	002° 15.659' E	52.218734	2.260985
66	52° 13.258' N	002° 16.509' E	52.220971	2.275148

67	52° 13.349' N	002° 17.371' E	52.222490	2.289522
68	52° 13.321' N	002° 18.247' E	52.222012	2.304111
69	52° 13.421' N	002° 19.108' E	52.223675	2.318472
70	52° 13.509' N	002° 19.972' E	52.225151	2.332867
71	52° 13.557' N	002° 20.847' E	52.225950	2.347445
72	52° 13.602' N	002° 21.722' E	52.226708	2.362032
73	52° 13.697' N	002° 22.680' E	52.228194	2.376463
74	52° 13.719' N	002° 23.464' E	52.228651	2.391068
75	52° 13.792' N	002° 24.333' E	52.229865	2.405553
76	52° 13.595' N	002° 25.142' E	52.226577	2.419036
77	52° 13.577' N	002° 26.004' E	52.226285	2.433399
78	52° 14.058' N	002° 26.317' E	52.234301	2.438622
79	52° 14.594' N	002° 26.333' E	52.243241	2.438877
80	52° 15.128' N	002° 26.443' E	52.252130	2.440714
81	52° 15.666' N	002° 26.487' E	52.261097	2.441446
82	52° 16.203' N	002° 26.560' E	52.270047	2.442665
83	52° 16.742' N	002° 26.560' E	52.279037	2.442663
84	52° 17.280' N	002° 26.586' E	52.288007	2.443105
85	52° 17.779' N	002° 26.910' E	52.296310	2.448504
86	52° 18.262' N	002° 27.296' E	52.304372	2.454927
87	52° 18.667' N	002° 27.785' E	52.311111	2.463088
88	52° 18.890' N	002° 28.586' E	52.314826	2.476438
89	52° 19.280' N	002° 29.134' E	52.321338	2.485572
90	52° 19.813' N	002° 29.263' E	52.330224	2.487710
91	52° 20.350' N	002° 29.317' E	52.339175	2.488617
92	52° 20.821' N	002° 29.603' E	52.347014	2.493387
93	52° 20.917' N	002° 30.469' E	52.348610	2.507815
94	52° 20.903' N	002° 31.348' E	52.348387	2.522462
95	52° 20.904' N	002° 32.227' E	52.348394	2.537113
96	52° 20.937' N	002° 33.105' E	52.348958	2.551746
97	52° 20.879' N	002° 33.980' E	52.347990	2.566327
98	52° 21.118' N	002° 34.654' E	52.351975	2.577568
99	52° 21.652' N	002° 34.785' E	52.360864	2.579745
100	52° 22.185' N	002° 34.920' E	52.369747	2.582000
101	52° 22.719' N	002° 35.044' E	52.378645	2.584067
102	52° 23.254' N	002° 35.148' E	52.387565	2.585794

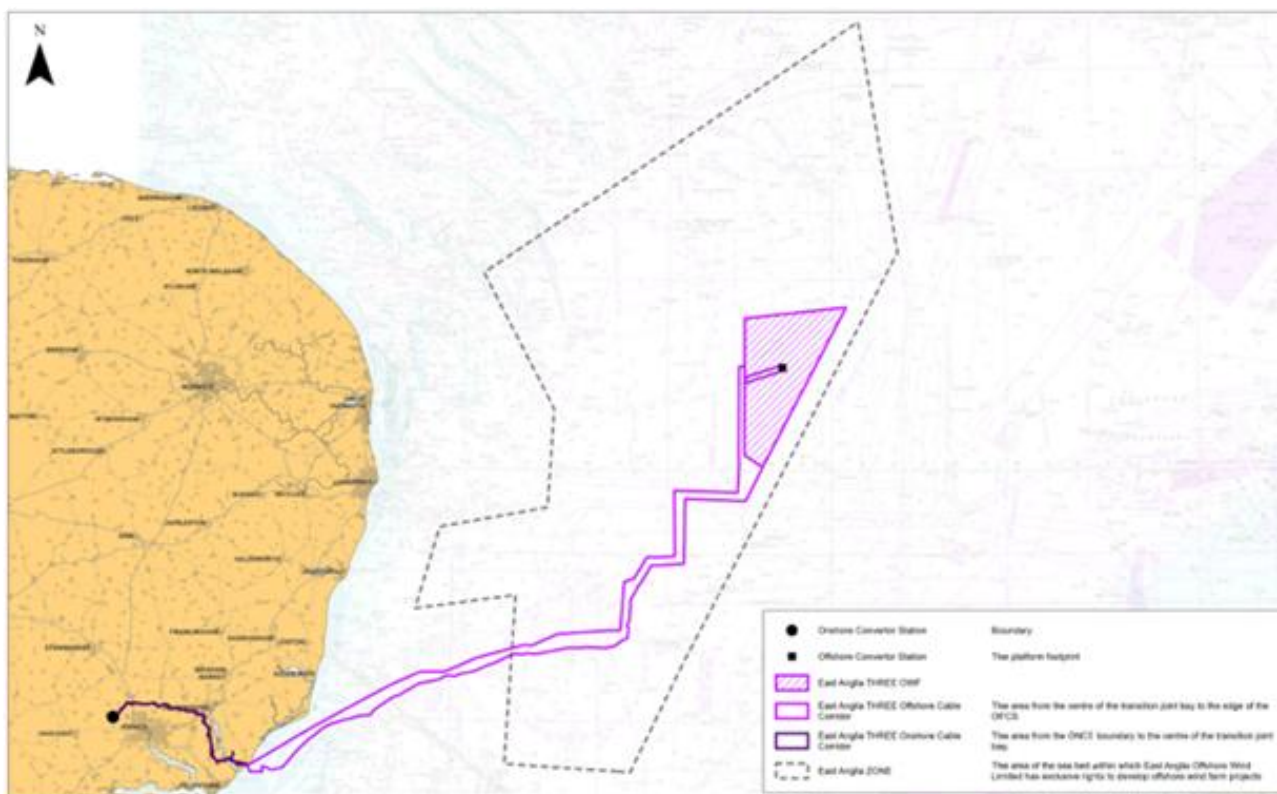
103	52° 23.789' N	002° 35.252' E	52.396484	2.587530
104	52° 24.322' N	002° 35.377' E	52.405363	2.589613
105	52° 24.858' N	002° 35.466' E	52.414303	2.591104
106	52° 25.396' N	002° 35.530' E	52.423267	2.592175
107	52° 25.934' N	002° 35.593' E	52.432232	2.593223
108	52° 26.472' N	002° 35.664' E	52.441193	2.594398
109	52° 27.010' N	002° 35.720' E	52.450159	2.595328
110	52° 27.205' N	002° 36.448' E	52.453422	2.607466
111	52° 27.229' N	002° 37.330' E	52.453811	2.622165
112	52° 27.26' N	002° 38.211' E	52.454325	2.636849
113	52° 27.293' N	002° 39.092' E	52.454877	2.651531
114	52° 27.331' N	002° 39.972' E	52.455523	2.666202
115	52° 27.421' N	002° 40.838' E	52.457009	2.680627
116	52° 27.479' N	002° 41.710' E	52.457976	2.695161
117	52° 27.571' N	002° 42.579' E	52.459523	2.709654
118	52° 27.539' N	002° 43.457' E	52.458976	2.724290
119	52° 27.595' N	002° 44.297' E	52.459922	2.738279
120	52° 28.022' N	002° 44.833' E	52.467037	2.747222
121	52° 28.529' N	002° 45.027' E	52.475476	2.750447
122	52° 29.068' N	002° 45.011' E	52.484461	2.750176
123	52° 29.606' N	002° 45.008' E	52.493426	2.750131
124	52° 30.142' N	002° 44.915' E	52.502366	2.748581
125	52° 30.679' N	002° 44.84' E	52.511321	2.747331
126	52° 31.218' N	002° 44.803' E	52.520297	2.746716
127	52° 31.757' N	002° 44.837' E	52.529277	2.747282
128	52° 32.296' N	002° 44.860' E	52.538263	2.747675
129	52° 32.834' N	002° 44.823' E	52.547238	2.747044
130	52° 33.374' N	002° 44.844' E	52.556225	2.747400
131	52° 33.913' N	002° 44.847' E	52.565212	2.747449
132	52° 34.451' N	002° 44.863' E	52.574184	2.747716
133	52° 34.989' N	002° 44.905' E	52.583156	2.748420
134	52° 35.527' N	002° 44.848' E	52.592116	2.747469
135	52° 36.059' N	002° 44.927' E	52.600975	2.748787
136	52° 36.585' N	002° 45.099' E	52.609753	2.751647
137	52° 37.123' N	002° 45.156' E	52.618723	2.752592
138	52° 37.663' N	002° 45.149' E	52.627711	2.752488

139	52° 38.198' N	002° 45.244' E	52.636639	2.754060
140	52° 38.731' N	002° 45.376' E	52.645518	2.756266
141	52° 39.042' N	002° 46.002' E	52.650705	2.766699
142	52° 39.105' N	002° 46.882' E	52.651751	2.781364
143	52° 39.272' N	002° 47.724' E	52.654528	2.795397
144	52° 39.466' N	002° 48.551' E	52.657768	2.809187
145	52° 39.660' N	002° 49.379' E	52.661007	2.822977
146	52° 39.854' N	002° 50.207' E	52.664235	2.836776
147	52° 40.092' N	002° 51.002' E	52.668205	2.850028
147.9	52° 40.244' N	002° 51.742' E	52.67074	2.862367

2.2. Approximate working areas of Guard Vessels along the Export Cable Corridor

ZONE	FROM			TO		
	KP	Latitude [DD MM.mm]	Longitude [DD MM.mm]	KP	Latitude [DD MM.mm]	Longitude [DD MM.mm]
C1	4	51° 59.939' N	001° 28.337' E	64	52° 12.926' N	002° 14.028' E
C2	73	52° 13.697' N	002° 22.680' E	147.9	52° 40.244' N	002° 51.742' E

Figure 1: East Anglia 3 Cable Installation Working Area Overview.



3. PROJECT CONTACT DETAILS

The following contact can provide relevant information if required. Please note that any specific queries can be addressed to the relevant shore-based representatives.

3.1. Site Management:

Marine Coordinator	
Name	EA3 MCC
Contact Telephone Number	+44 (0) 1416144821
Email Address	EA3_MCC@scottishpower.com
Address	Orbis Energy, Wilde Street, Lowestoft, NR32 1XH

Offshore Installation Manager	
Name	EA3 OIM
Contact Telephone Number	+44 (0) 7960 608 666
Email Address	ea3_oim@scottishpower.com
Address	Orbis Energy, Wilde Street, Lowestoft, NR32 1XH

3.2. Emergency Contact:

Emergency Contact	
Name	EA3 MCC
Contact Telephone Number	Emergency Tel +44 (0) 141 6144822
Email Address	EA3_MCC@scottishpower.com
Address	Orbis Energy, Wilde Street, Lowestoft, NR32 1XH

3.3. Marine Management

Marine Management	
Name	Anthony Milligan
Contact Telephone Number	Tel +44 (0) 7760 880723
Email Address	amilligan@scottishpower.com
Address	Scottish Power HQ 320 St Vincent Street, Glasgow, G25AD
Scope of Work	Export Cable Corridor Guard Vessels

4. NOTICE TO MARINERS' DISTRIBUTION LIST

A list of recipients for the Notice to Mariners is kept by the Project Team. If you wish to be added to this list, please contact the personnel whose contact details are set out within section 3 of this Notice.

Contacts	Email Address
The Crown Estate	consents@thecrownestate.co.uk
Marine Management Organisation	marine.consents@marinemanagement.org.uk
Marine Management Organisation	info@marinemanagement.org.uk
Kingfisher	kingfisher@seafish.co.uk
Local Marine Management Organisation Office	lowestoft@marinemanagement.org.uk
Inshore Fisheries and Conservation Authority	mail@eastern-ifca.gov.uk
Trinity House	navigation.directorate@thls.org
Trinity House	navigation@trinityhouse.co.uk
Maritime and Coastguard Agency	navigationsafety@mcga.gov.uk
United Kingdom Hydrographic Office	navwarnings@ukho.gov.uk
United Kingdom Hydrographic Office	sdr@ukho.gov.uk
United Kingdom Hydrographic Office	offshore.energy@ukho.gov.uk
National Federation of Fishermen's Organisations	nffo@nffo.org.uk
National Coastguard	nmoccontroller@hmcg.gov.uk
Centre of Environment, Fisheries and Aquaculture Science	renewables@cefas.co.uk
Local Coastguard	renewables@hmcg.gov.uk
Scottish Power Renewables Contacts	Email Address
Scottish Power Renewables	mwooltorton@scottishpower.com
Scottish Power Renewables	mgregory@scottishpower.com
Scottish Power Renewables	cisbell@scottishpower.com
Scottish Power Renewables	jpoulson@scottishpower.com
Scottish Power Renewables	amilligan@scottishpower.com
Scottish Power Renewables	ea3_mcc@scottishpower.com
Scottish Power Renewables	ea3_oim@scottishpower.com
Scottish Power Renewables	marine@scottishpower.com
Scottish Power Renewables	jyoung@scottishpower.com
Scottish Power Renewables	jodum@scottishpower.com
Scottish Power Renewables	f.murdoch@scottishpower.com
Scottish Power Renewables	eahub_construction@scottishpower.com
Scottish Power Renewables	mmasters@scottishpower.com
Scottish Power Renewables	r.stocks@scottishpower.com
Scottish Power Renewables	ccumming@scottishpower.com