

EAST ANGLIA THREE

Notice to Mariners

NTM-012/2026

Wind Turbine Generator Commissioning Campaign

Prepared by:	Checked by:	Approved by:
Marine Coordinator	Marine Assurance Manager	Installation Manager

TABLE OF CONTENTS

1. MARINE ACTIVITIES	3
1.1. Summary:.....	3
1.2. Activity Description:	3
1.3. Program Schedule:.....	3
1.4. Vessel Details:.....	4
2. ACTIVITY AREA	5
2.1. Offshore Activity Area:	5
2.2. Installation locations	7
3. PROJECT CONTACT DETAILS	12
3.1. Site Management:	12
3.2. Emergency Contact:.....	12
3.3. Marine Management.....	12
4. NOTICE TO MARINERS' DISTRIBUTION LIST.....	Error! Bookmark not defined.

1. MARINE ACTIVITIES

1.1. Summary:

Mariners are advised that the Commissioning “Walk to Work” (W2W) Vessel **IWS Windwalker** and supporting Crew Transfer Vessels (CTVs) **Farra Siskin** and **Fob Swath 7** will commence Wind Turbine Generator (WTG) commissioning operations within the East Anglia THREE offshore windfarm area circa the 01/04/2026. Operations will be conducted by Siemens Gamesa Renewable Energy (SGRE). The main working area will be inside the CDM Zone of the wind farm array as detailed in section [2.1](#). The position of each installation location is identified in section [2.2](#) of this document.

During the WTG installation campaign, all vessels are requested to keep a 500m safety distance from the IWS Windwalker.

1.2. Activity Description:

IWS Windwalker and supporting **CTVs** will commission 95 WTGs at the locations set out in section 2.2 of this document.

Installed WTGs shall be marked with the following aids to navigation:

Lights

- Fl Y 2.5s light (visible through 360°)
- Minimum 2 nm range

Partially constructed monopiles shall be marked with the following aids to navigation where a transition piece has not been installed:

Lights

- Fl Y 2.5s light (visible through 360°)
- Minimum 2 nm range

Weather permitting, offshore works will be carried out on a continuous basis (i.e. 24-hour working, seven days a week).


During operations, the **IWS Windwalker** will have restricted manoeuvrability as defined under COLREGS (International Regulations for Preventing Collisions at Sea, 1972). They will display the appropriate day shapes and lights and will transmit an Automatic Identification System (AIS) message.

1.3. Program Schedule:


- The **IWS Windwalker** will mobilise at the Port of Lowestoft, with first commissioning activities anticipated to start around 18/03/2026
- The **CTVs** will mobilise at the Port of Lowestoft and support the IWS Windwalker throughout the campaign.
- WTG installation is expected to be completed end of Q4 2026.

1.4. Vessel Details:


Vessel Details	
Name of vessel:	IWS Windwalker
Call Sign:	5BBL6
MMSI No:	210495000
On Board Contact Details:	Phone: +4721507338 Email: master@wind.iwsfleet.com
Port of operation:	Lowestoft



Vessel Details	
Name of vessel:	Fob Swath 7
Call Sign:	OWSJ2
MMSI No:	219491000
On Board Contact Details:	Phone: +45 8213 0944 Email: fob7@odfjellwind.com
Port of operation:	Lowestoft



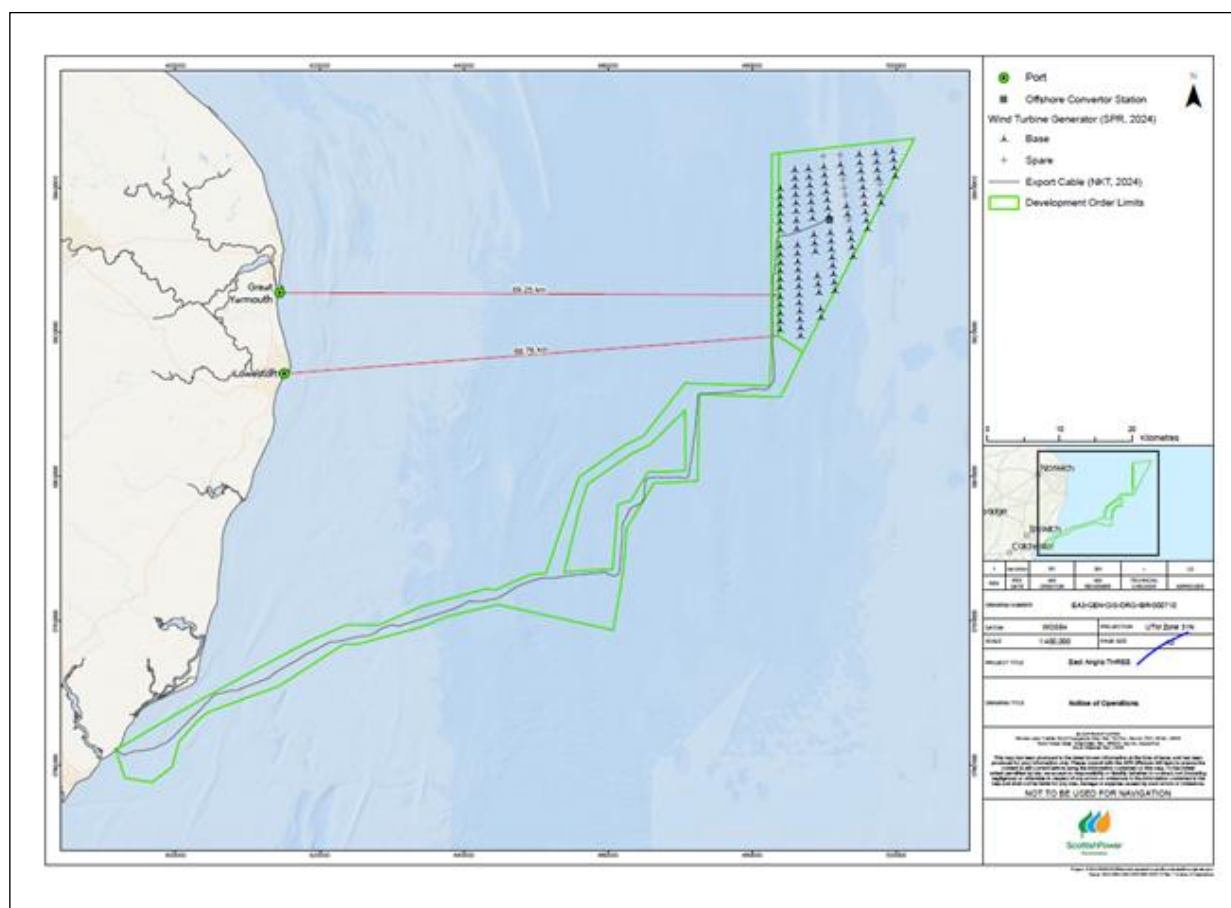
Vessel Details	
Name of vessel:	FARRA SISKIN
Call Sign:	MRUQ9
MMSI No:	232060159
On Board Contact Details:	Phone: +44 7523 802342 Email: farrasiskin@farramarine.com
Port of operation:	Lowestoft

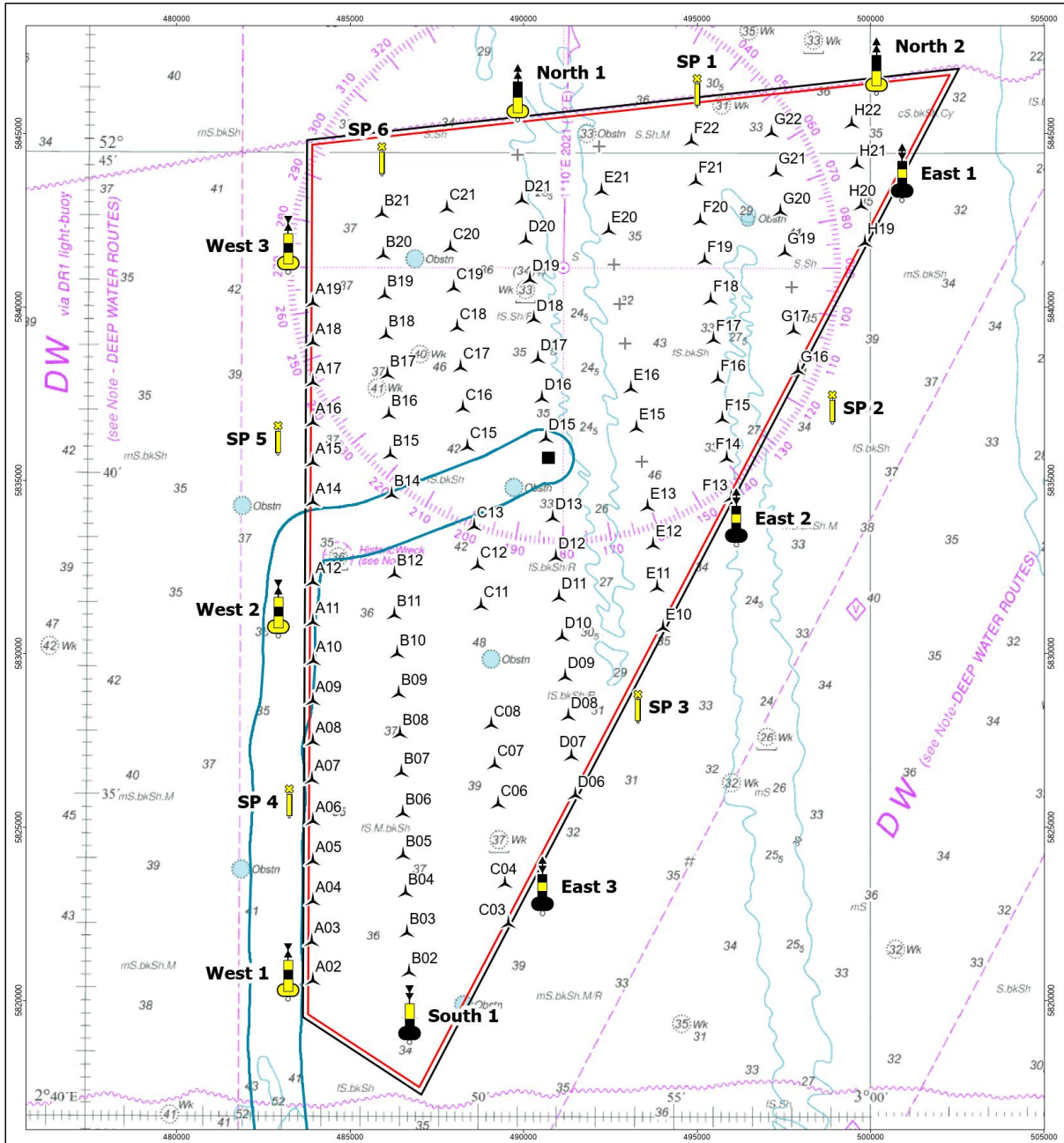


2. ACTIVITY AREA

2.1. Offshore Activity Area:

Location	Latitude	Longitude
East Anglia Three Offshore Windfarm	52°45.167'N	002°45.500'E
	52°46.333'N	003°02.333'E
	52°30.333'N	002°48.550'E
	52°31.550'N	002°45.500'E





NOT TO BE USED FOR NAVIGATION
 © COPYRIGHT NOTES
 Service Layer Credits: World Ocean Bank, OpenStreetMap, Esri, GEBCO, Garmin, Nautical
 World Ocean Reference: Erit, TomTom, Garmin, FAO, NOAA, USGS
 This map has been produced to the latest known information at the time of issue, and has been produced for your information only. Please consult with the SPR Offshore GIS team to ensure the content is still current before using the information contained on this map. To the fullest extent permitted by law, we accept no responsibility or liability (whether in contract, tort (including negligence) or otherwise in respect of any errors or omissions in the information contained in the map and shall not be liable for any loss, damage or expense caused by such errors or omissions.

- Notes
- Nominal spacing between wind turbines in main rows is 1150 m.
 - Nominal spacing between main rows of wind turbines is 2400 m / Various.
 - Wind turbine positions could be micro-sited up to 50 m from nominal grid positions.
 - Wind turbine positions are fixed and targeted for installation. Layout justification is outlined in EA3-GEN-ENG-TEC-IBR-000195. Agreed layout is as per EA3-GEN-GIS-DRG-IBR-000412 Rev 9.

- Cardinal Buoy, with a focal plane of 3 to 5 metres
- East Cardinal Buoy
 - North Cardinal Buoy
 - South Cardinal Buoy
 - West Cardinal Buoy
 - Special Mark Buoy
 - Turbine Installation Position
 - Spare Turbine Installation Position
 - Indicative Offshore Substation Position
 - Current Export Cable Route 750m Buffer
 - East Anglia THREE Buildable Area (150m Inside Development Order Limits)
 - East Anglia THREE Development Order Limits (OWF Only)



REV	REV DATE	CREATOR	GIS REVIEWER	TECHNICAL CHECKER	APPROVER
1		RICHARD YORK	BENJAMIN HOYLE		

DRAWING NUMBER	EA3-GEN-GIS-DRG-IBR-000414		
DATUM	WGS84	PROJECTION	UTM Zone 31N
SCALE	1:110,000	PAGE SIZE	A3
PROJECT TITLE	East Anglia THREE		

DRAWING TITLE: **Temporary Navigation Marks During Construction**



Project: E:\EA3\EA3\DRG\Analysis\Human\Shipping_and_Navigation\Shipping_and_Navigation.dwg
 Name: EA3-GEN-GIS-DRG-IBR-000414 Rev 6 Temporary Navigation Marks During Construction

2.2. Installation locations

WTG ID	Latitude (WGS84 DDD MM.MMM)	Longitude (WGS84 DDD MM.MMM)	Easting	Northing
A02	52° 32.196' N	002° 45.780' E	483925.333	5820749.338
A03	52° 32.804' N	002° 45.748' E	483892.960	5821876.900
A04	52° 33.437' N	002° 45.773' E	483925.333	5823049.338
A05	52° 34.057' N	002° 45.770' E	483925.333	5824199.338
A06	52° 34.677' N	002° 45.767' E	483925.333	5825349.338
A07	52° 35.319' N	002° 45.740' E	483899.999	5826540.139
A08	52° 35.918' N	002° 45.760' E	483925.333	5827649.338
A09	52° 36.551' N	002° 45.756' E	483925.170	5828823.680
A10	52° 37.169' N	002° 45.765' E	483938.912	5829970.418
A11	52° 37.779' N	002° 45.750' E	483925.333	5831099.338
A12	52° 38.399' N	002° 45.747' E	483925.333	5832249.338
A14	52° 39.640' N	002° 45.740' E	483925.333	5834549.338
A15	52° 40.260' N	002° 45.737' E	483925.333	5835699.338
A16	52° 40 880' N	002° 45.733' E	483925.333	5836849.338
A17	52° 41 500' N	002° 45 730' E	483925.333	5837999.338
A18	52° 42.121' N	002° 45.727' E	483925.333	5839149.338
A19	52° 42.741' N	002° 45.723' E	483925.333	5840299.338
B01	52° 31.688' N	002° 48.252' E	486717.060	5819798.460
B02	52° 32.332' N	002° 48.231' E	486696.415	5820993.335
B03	52° 32.943' N	002° 48.176' E	486637.131	5822126.349
B04	52° 33.563' N	002° 48.137' E	486596.996	5823275.648

B05	52° 34.151' N	002° 48.071' E	486525.550	5824367.630
B06	52° 34.802' N	002° 48.061' E	486516.726	5825574.247
B07	52° 35.436' N	002° 48.022' E	486476.148	5826748.714
B08	52° 36.043' N	002° 47.984' E	486436.457	5827872.846
B09	52° 36.662' N	002° 47.945' E	486396.322	5829022.145
B10	52° 37.282' N	002° 47.908' E	486356.187	5830171.445
B11	52° 37.892' N	002° 47.831' E	486273.672	5831302.889
B12	52° 38.522' N	002° 47.830' E	486275.917	5832470.043
B14	52° 39.761' N	002° 47.753' E	486195.648	5834768.642
B15	52° 40.381' N	002° 47.715' E	486155.513	5835917.942
B16	52° 41.002' N	002° 47.677' E	486115.378	5837067.241
B17	52° 41.621' N	002° 47.638' E	486075.243	5838216.541
B18	52° 42.241' N	002° 47.599' E	486035.108	5839365.840
B19	52° 42.861' N	002° 47.561' E	485994.973	5840515.140
B20	52° 43.481' N	002° 47.522' E	485954.839	5841664.439
B21	52° 44.123' N	002° 47.482' E	485913.280	5842855.710
C03	52° 33.093' N	002° 50.760' E	489558.520	5822397.074
C04	52° 33.708' N	002° 50.671' E	489460.593	5823537.939
C06	52° 34.944' N	002° 50.493' E	489263.893	5825829.512
C07	52° 35.562' N	002° 50.404' E	489165.543	5826975.299
C08	52° 36.180' N	002° 50.314' E	489067.194	5828121.086
C11	52° 38.034' N	002° 50.046' E	488772.144	5831558.446
C12	52° 38.651' N	002° 49.956' E	488673.795	5832704.233

C13	52° 39.269' N	002° 49.867' E	488575.445	5833850.020
C15	52° 40.505' N	002° 49.687' E	488378.745	5836141.593
C16	52° 41.102' N	002° 49.570' E	488249.504	5837249.344
C17	52° 41.741' N	002° 49.508' E	488182.046	5838433.167
C18	52° 42.359' N	002° 49.418' E	488083.696	5839578.953
C19	52° 42.977' N	002° 49.328' E	487985.346	5840724.740
C20	52° 43.595' N	002° 49.238' E	487886.996	5841870.527
C21	52° 44.213' N	002° 49.148' E	487788.647	5843016.314
D06	52° 35.087' N	002° 52.463' E	491489.147	5826089.511
D07	52° 35.695' N	002° 52.362' E	491377.111	5827217.372
D08	52° 36.313' N	002° 52.281' E	491287.451	5828363.871
D09	52° 36.932' N	002° 52.199' E	491197.790	5829510.371
D10	52° 37.550' N	002° 52.118' E	491108.130	5830656.870
D11	52° 38.168' N	002° 52.037' E	491018.469	5831803.370
D12	52° 38.786' N	002° 51.955' E	490928.809	5832949.869
D13	52° 39.405' N	002° 51.874' E	490839.148	5834096.369
D15	52° 40.641' N	002° 51.696' E	490642.933	5836387.852
D16	52° 41.258' N	002° 51.592' E	490527.116	5837532.005
D17	52° 41.875' N	002° 51.487' E	490411.299	5838676.158
D18	52° 42.492' N	002° 51.382' E	490295.481	5839820.312
D19	52° 43.109' N	002° 51.277' E	490179.664	5840964.465
D20	52° 43.726' N	002° 51.172' E	490063.847	5842108.618
D21	52° 44.343' N	002° 51.067' E	489948.029	5843252.771

E10	52° 37.691' N	002° 54.697' E	494018.662	5830914.138
E11	52° 38.317' N	002° 54.545' E	493848.230	5832074.760
E12	52° 38.982' N	002° 54.439' E	493730.670	5833308.729
E13	52° 39.571' N	002° 54.296' E	493570.702	5834399.568
E15	52° 40.799' N	002° 54.010' E	493250.765	5836677.207
E16	52° 41.413' N	002° 53.867' E	493090.796	5837816.027
E20	52° 43.870' N	002° 53.293' E	492450.922	5842371.305
E21	52° 44.487' N	002° 53.108' E	492245.700	5843516.130
F13	52° 39.712' N	002° 56.434' E	495979.678	5834658.886
F14	52° 40.328' N	002° 56.320' E	495852.486	5835801.830
F15	52° 40.945' N	002° 56.206' E	495725.295	5836944.775
F16	52° 41.561' N	002° 56.092' E	495598.103	5838087.719
F17	52° 42.178' N	002° 55.978' E	495470.911	5839230.664
F18	52° 42.791' N	002° 55.906' E	495390.430	5840368.120
F19	52° 43.411' N	002° 55.750' E	495216.527	5841516.553
F20	52° 44.027' N	002° 55.636' E	495089.335	5842659.497
F21	52° 44.644' N	002° 55.522' E	494962.143	5843802.442
F22	52° 45.260' N	002° 55.408' E	494834.951	5844945.387
G16	52° 41.699' N	002° 58.142' E	497907.867	5838340.945
G17	52° 42.315' N	002° 58.029' E	497780.675	5839483.889
G19	52° 43.535' N	002° 57.802' E	497526.720	5841745.480
G20	52° 44.164' N	002° 57.689' E	497399.099	5842912.723
G21	52° 44.781' N	002° 57.575' E	497271.907	5844055.667

G22	52° 45.398' N	002° 57.461' E	497144.715	5845198.612
H19	52° 43.685' N	002° 59.854' E	499835.563	5842022.063
H20	52° 44.264' N	002° 59.756' E	499725.370	5843096.210
H21	52° 44.902' N	002° 59.648' E	499604.350	5844278.850
H22	52° 45.535' N	002° 59.515' E	499453.889	5845451.772

3. PROJECT CONTACT DETAILS

The following contact can provide relevant information if required. Please note that any specific queries can be addressed to the relevant shore-based representatives.

3.1. Site Management:

Marine Coordinator	
Name	EA3 MCC
Contact Telephone Number	+44 (0) 1416144821
Email Address	EA3_MCC@scottishpower.com
Address	Herring Market, Battery Green Road, Lowestoft, Suffolk, NR32 1BZ

Offshore Installation Manager	
Name	EA3 OIM
Contact Telephone Number	+44 (0) 7960 608 666
Email Address	ea3_oim@scottishpower.com
Address	Herring Market, Battery Green Road, Lowestoft, Suffolk, NR32 1BZ

3.2. Emergency Contact:

Emergency Contact	
Name	EA3 MCC
Contact Telephone Number	+44 (0) 1416144821
Email Address	EA3_MCC@scottishpower.com
Address	Herring Market, Battery Green Road, Lowestoft, Suffolk, NR32 1BZ

3.3. Marine Management

Marine Management	
Name	Anthony Milligan
Contact Telephone Number	+44 (0) 7760 880723
Email Address	amilligan@scottishpower.com
Address	Scottish Power HQ 320 St Vincent Street, Glasgow, G2 5AD
Scope of Work	WTG Commissioning

4. NOTICE TO MARINERS' DISTRIBUTION LIST

A list of recipients for the Notice to Mariners is kept by the Project Team. If you wish to be added to this list, please contact the personnel whose contact details are set out within section 3 of this Notice.

Contacts	Email Address
The Crown Estate	consents@thecrownestate.co.uk
Marine Management Organisation	marine.consents@marinemanagement.org.uk
Marine Management Organisation	info@marinemanagement.org.uk
Kingfisher	kingfisher@seafish.co.uk
Local Marine Management Organisation Office	lowestoft@marinemanagement.org.uk
Inshore Fisheries and Conservation Authority	mail@eastern-ifca.gov.uk
Trinity House	navigation.directorate@thls.org
Trinity House	navigation@trinityhouse.co.uk
Maritime and Coastguard Agency	navigationsafety@mca.gov.uk
United Kingdom Hydrographic Office	navwarnings@ukho.gov.uk
United Kingdom Hydrographic Office	sdr@ukho.gov.uk
United Kingdom Hydrographic Office	offshore.energy@ukho.gov.uk
National Federation of Fishermen's Organisations	nffo@nffo.org.uk
National Coastguard	nmoccontroller@hmcg.gov.uk
Centre of Environment, Fisheries and Aquaculture Science	renewables@cefas.co.uk
Local Coastguard	renewables@hmcg.gov.uk
Scottish Power Renewables Contacts	Email Address
Scottish Power Renewables	amilligan@scottishpower.com
Scottish Power Renewables	mwooltorton@scottishpower.com
Scottish Power Renewables	mgregory@scottishpower.com
Scottish Power Renewables	awhite2@scottishpower.com
Scottish Power Renewables	ea3_mcc@scottishpower.com
Scottish Power Renewables	ea3_oim@scottishpower.com
Scottish Power Renewables	marine@scottishpower.com
Scottish Power Renewables	jyoung@scottishpower.com
Scottish Power Renewables	ralextander@scottishpower.com
Scottish Power Renewables	abrown2@scottishpower.com
Scottish Power Renewables	f.murdoch@scottishpower.com
Scottish Power Renewables	eahub_construction@scottishpower.com
Scottish Power Renewables	r.stocks@scottishpower.com
Scottish Power Renewables	mgiraldez@scottishpower.com
Scottish Power Renewables	nross@scottishpower.com
Scottish Power Renewables	Fhauchart@scottishpower.com
Scottish Power Renewables	s.diaz@iberdrola.es
Scottish Power Renewables	apavlidis@scottishpower.com